



Headline Statistics

<p>WCWSS DAM STORAGE (%)</p> <p>57.2</p>	<p>WEEKLY DAM LEVEL CHANGE (%)</p> <p>-1.10</p>	<p>AVERAGE TOTAL DAILY WATER USE (MLD)*</p> <p>1031</p>	<p>AVERAGE WATER USE PER PERSON (l/d)**</p> <p>176</p>
---	--	--	---

* The total daily water usage is the total water provided by the City of Cape Town and includes water provided to Stellenbosch and Drakenstein Municipalities

** The average per person water use is the average for the City of Cape Town only and is estimated as Total Water Use / Population. Summer demands are expected to be higher than the yearly average due to the increased use of water for outdoor irrigation. Average water use per person over the last 12 months was approximately 160 l/d

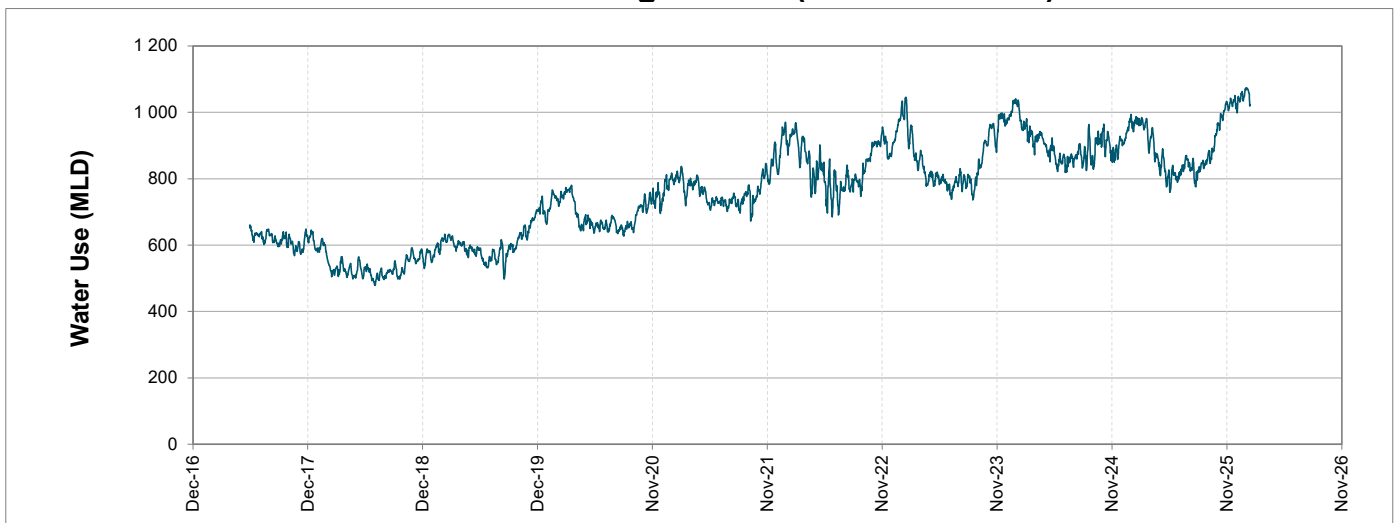
Water Resource Status

WATER RESOURCE STATUS	MEANING OF CURRENT STATUS
Early Drought Caution	<p>'Continued water wise use encouraged due to lower than anticipated dams level, cautioning possible start of a drought cycle'</p> <p>The main dams supplying the City are approximately 20% lower than last year - as shown on Page 3. While there is no immediate reason for concern, this updated drought risk status is part of the City's proactive approach to monitoring for and managing future droughts. This status and the corresponding actions are discussed in the Water Outlook 2023.</p> <p>The Water Resource Status will be updated again in May 2026.</p>

Water Production from Different Sources

<p>MAJOR DAMS (MLD)</p> <p>1009</p>	<p>MINOR DAMS (MLD)</p> <p>12</p>	<p>GROUND WATER AND SPRINGS (MLD)</p> <p>10</p>
--	--	--

Overall Water Usage Trend (2010 - Present)



WCWSS means Western Cape Water Supply System

MLD means million litres per day

More information on Water Saving and Restrictions is available on the City of Cape Town's 'ThinkWater' website

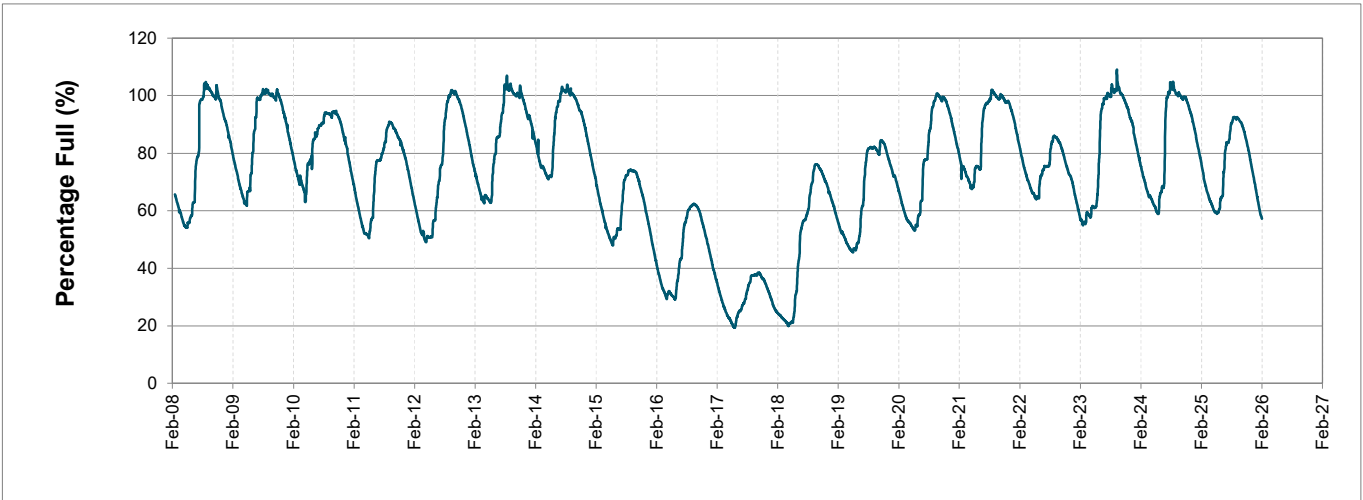
Water Stored in Major Dams (WCWSS)

Overall Percentage Full **57.2%**

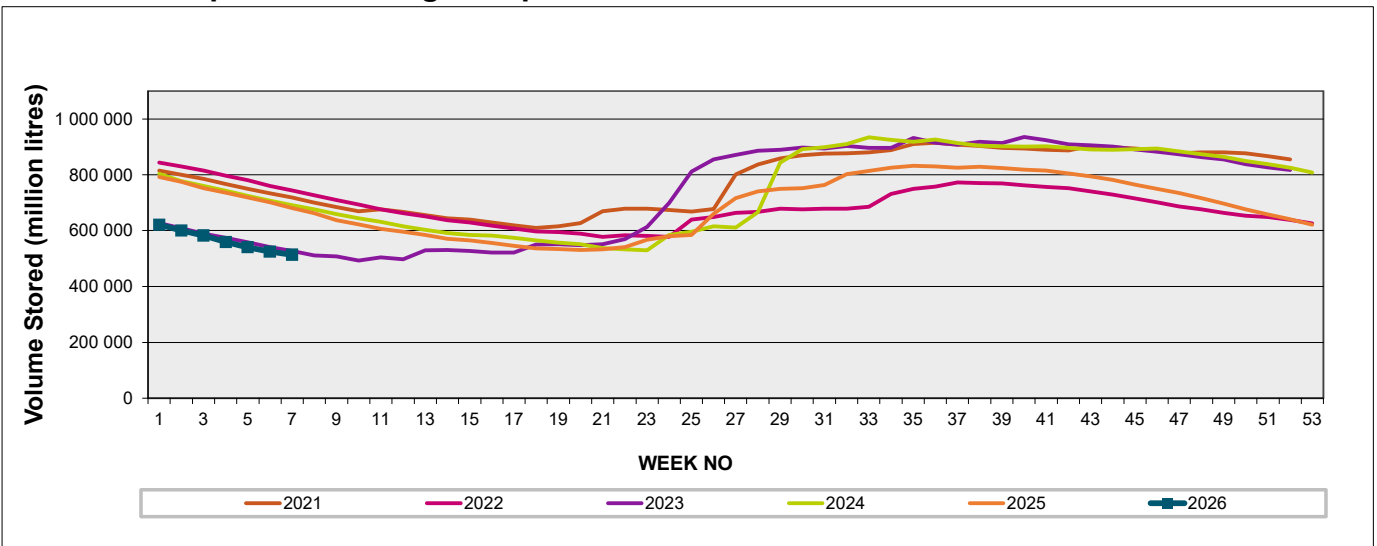
Weekly Change **-1.1%**

MAJOR DAMS (WCWSS)	STORAGE						
	CAPACITY	%	%	%	%	%	%
	MI	16 February 2026	Previous week	2025	2024	2023	2022
BERG RIVER	130 010	54.5	57.4	76.8	79.5	72.4	83.9
STEENBRAS LOWER	33 517	51.7	53.5	67.7	70.2	57.5	77.2
STEENBRAS UPPER	31 767	69.1	69.2	93.8	90.6	86.7	93.6
THEEWATERSKLOOF	480 188	53.8	54.3	76.5	74.3	54.4	84.6
VOËLVLEI	164 095	64.6	66.3	75.5	72.3	43.0	77.2
WEMMERSHOEK	58 644	67.1	68.5	69.3	83.6	71.8	72.9
TOTAL STORED	898 221	513 711	524 097	684 325	679 975	514 980	740 121
% STORAGE		57.2%	58.3%	76.2%	75.7%	57.3%	82.4%

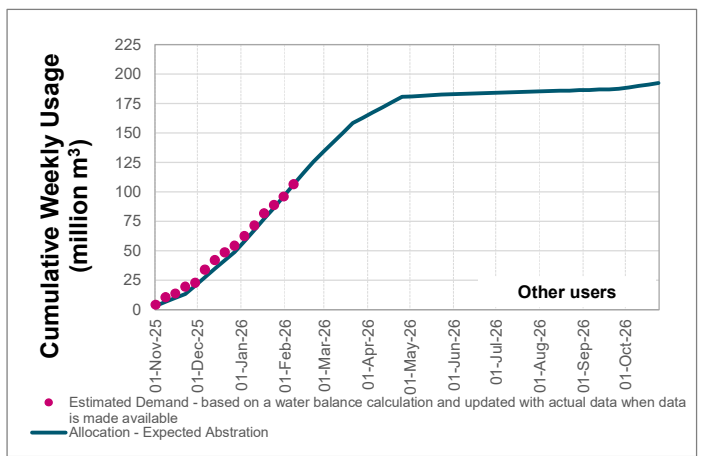
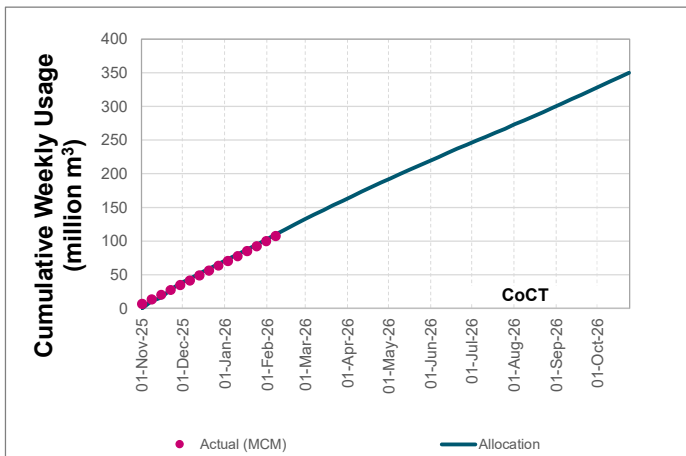
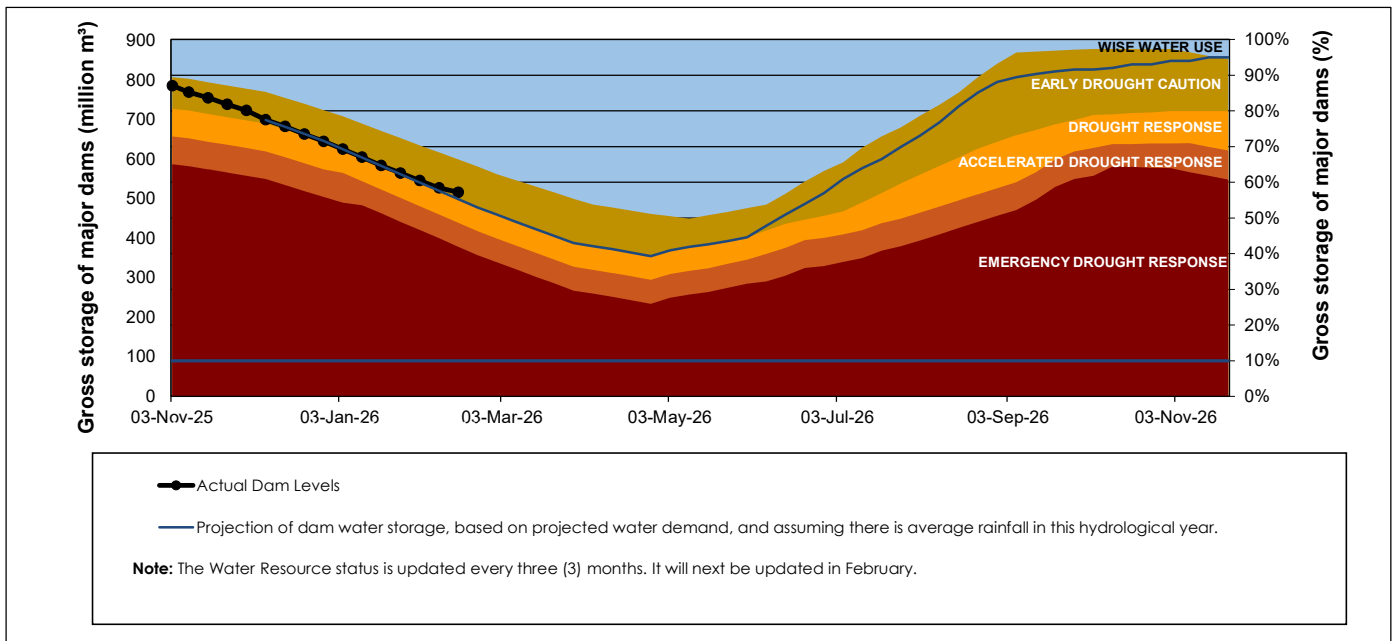
WCWSS Storage Record (2008 - Present)



WCWSS Comparative Storage Graph



Projected WCWSS Dam Storage Levels



Water Stored in Minor Dams

Overall Percentage Full **44.4**

Weekly Change **-2.96**

MINOR DAMS	STORAGE						
	CAPACITY	%	%	%	%	%	%
	MI	16 February 2026	Previous week	2025	2024	2023	2022
ALEXANDRA (Table Mountain)	126	31.7	33.1	37.5	40.6	44.8	67.1
DE VILLIERS (Table Mountain)	243	56.7	56.6	91.8	97.4	80.4	64.2
HELY-HUTCHINSON (Table Mount)	925	14.0	13.7	10.5	11.5	2.2	42.8
KLEINPLAATS (Simon's Town)	1 368	30.9	34.3	24.5	58.7	34.0	68.9
LAND-EN-ZEEZICHT (Helderberg)	451	83.9	81.3	81.3	79.5	85.4	86.7
LEWIS GAY (Simon's Town)	182	77.8	70.8	70.0	55.7	50.7	60.5
VICTORIA (Table Mountain)	128	41.3	41.3	87.5	74.3	75.0	55.4
WOODHEAD (Table Mountain)	954	68.1	79.8	75.9	60.4	60.2	48.4
Total Stored	4 377	1943.1	2072.8	2027.4	2302.4	1878.2	2581.9
Percentages stored		44.4	47.4	46.3	52.6	42.9	59.0

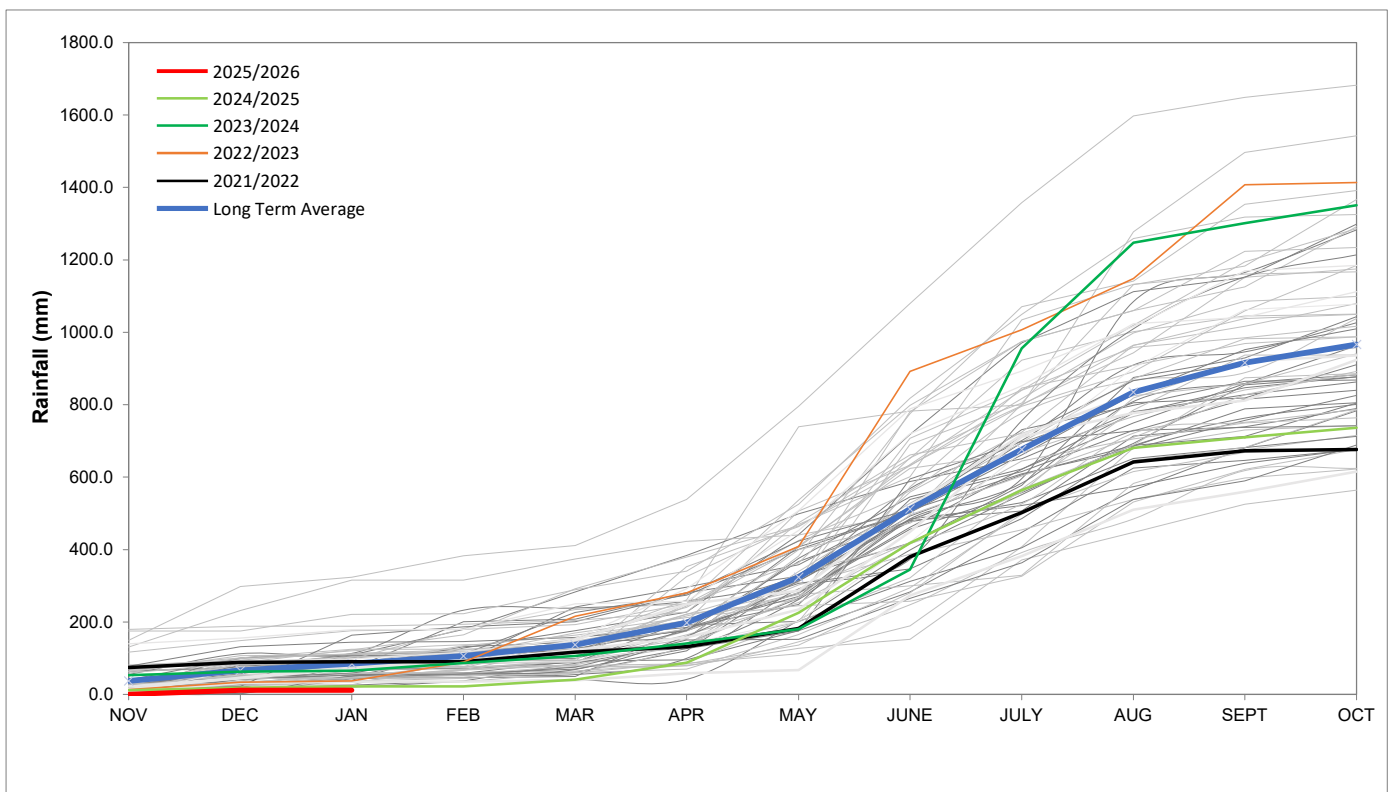
Rainfall Recorded

RAINFALL (mm)	09-Feb	10-Feb	11-Feb	12-Feb	13-Feb	14-Feb	15-Feb	Feb	
								Total*	LT Average
Blackheath Upper	18.0	0.0	0.0	0.0	0.0	0.0	0.0	19.0	15.1
Brooklands	22.0	7.0	2.0	10.0	5.0	0.0	0.0	54.0	19.2
Newlands	0.0	0.0	0.0	0.0	0.0	0.0	0.0	0.3	29.1
Steenbras	32.0	0.0	0.0	0.0	0.6	0.0	0.0	0.0	27.0
Table Mountain (Woodhead)	5.0	0.0	0.0	4.0	0.1	0.0	0.0	16.6	40.1
Theewaterskloof	34.0	2.2	0.0	4.7	0.0	0.0	0.0	124.2	22.6
Tygerberg	52.0	0.0	0.0	0.0	0.0	0.0	0.0	58.0	7.1
Voëlvlei	5.0	0.0	0.0	0.0	0.0	0.0	0.0	7.2	9.3
Wemmershoek	0.0	0.0	0.0	0.0	1.0	0.0	0.0	26.6	15.7
Wynberg	0.9	0.0	0.5	0.0	0.0	0.0	0.0	7.6	11.7

Notes: *Total/cummulative rainfall for month indicated above
LT: Long Term

Accumulated Monthly Rainfall at Wemmershoek

Note: Wemmershoek station used due to long record and mountainous location



Drinking Water Quality

SAMPLE PASS RATE

Month	Water Quality Compliance (%)	Target (%)
Jan-22	99.04	98.00
Feb-22	99.04	98.00
Mar-22	98.99	98.00
Apr-22	98.96	98.00
May-22	98.90	98.00
Jun-22	98.96	98.00
Jul-22	99.46	98.50
Aug-22	99.47	98.50
Sept-22	99.46	99.00
Oct-22	99.47	99.00
Nov-22	99.45	99.00
Dec-22	99.36	99.00
Jan-23	99.36	99.00
Feb-23	99.35	99.00
Mar-23	99.29	99.00
Apr-23	99.24	99.00
May-23	99.24	99.00
Jun-23	99.18	99.00
Jul-23	99.19	99.00
Aug-23	99.14	99.00
Sept-23	99.10	99.00
Oct-23	99.10	99.00
Nov-23	99.04	99.00
Dec-23	99.15	99.00
Jan-24	99.16	99.00
Feb-24	99.12	99.00
Mar-24	99.16	99.00
Apr-24	99.20	99.00
May-24	99.21	99.00
Jun-24	99.26	99.00
Jul-24	99.27	99.00
Aug-24	99.31	99.00
Sept-24	99.33	99.00
Oct-24	99.37	99.00
Nov-24	99.42	99.00
Dec-24	99.42	99.00
Jan-25	99.48	99.00
Feb-25	99.57	99.00
Mar-25	99.61	99.00
Apr-25	99.65	99.00
May-25	99.66	99.00
Jun-25	99.62	99.00
Jul-25	99.69	99.00
Aug-25	99.69	99.00
Sept-25	99.70	99.00
Oct-25	99.70	99.00
Nov-25	99.72	99.00
Dec-25	99.72	99.00

This table shows CCT drinking water quality compliance according to the South African National Standard 241:2015. Compliance, measured against all prescribed chemical and microbiological components, consistently exceeds the very high CCT target of 99%. (Overall compliance percentages of continuous sampling and analysis are released on a monthly basis.)