



Headline Statistics

WCWSS DAM STORAGE
(%)

71.4

WEEKLY DAM LEVEL CHANGE
(%)

-1.80

AVERAGE TOTAL
DAILY WATER USE
(MLD)

1010

Water Resource Status

WATER RESOURCE STATUS	MEANING OF CURRENT STATUS
Early Drought Caution	<p>'Continued water wise use encouraged due to lower than anticipated dams level, cautioning possible start of a drought cycle'</p> <p>The main dams supplying the City are approximately 15% lower than last year - as shown on Page 3. While there is no immediate reason for concern and no expected restrictions for the next year, this updated drought risk status is part of the City's proactive approach to monitoring for and managing future droughts. This status and the corresponding actions are discussed in the Water Outlook 2023. The latest analysis has been incorporated into the dashboard update</p> <p>The Water Resource Status will be updated again in February 2026.</p>

Water Production from Different Sources

MAJOR DAMS
(MLD)

1000

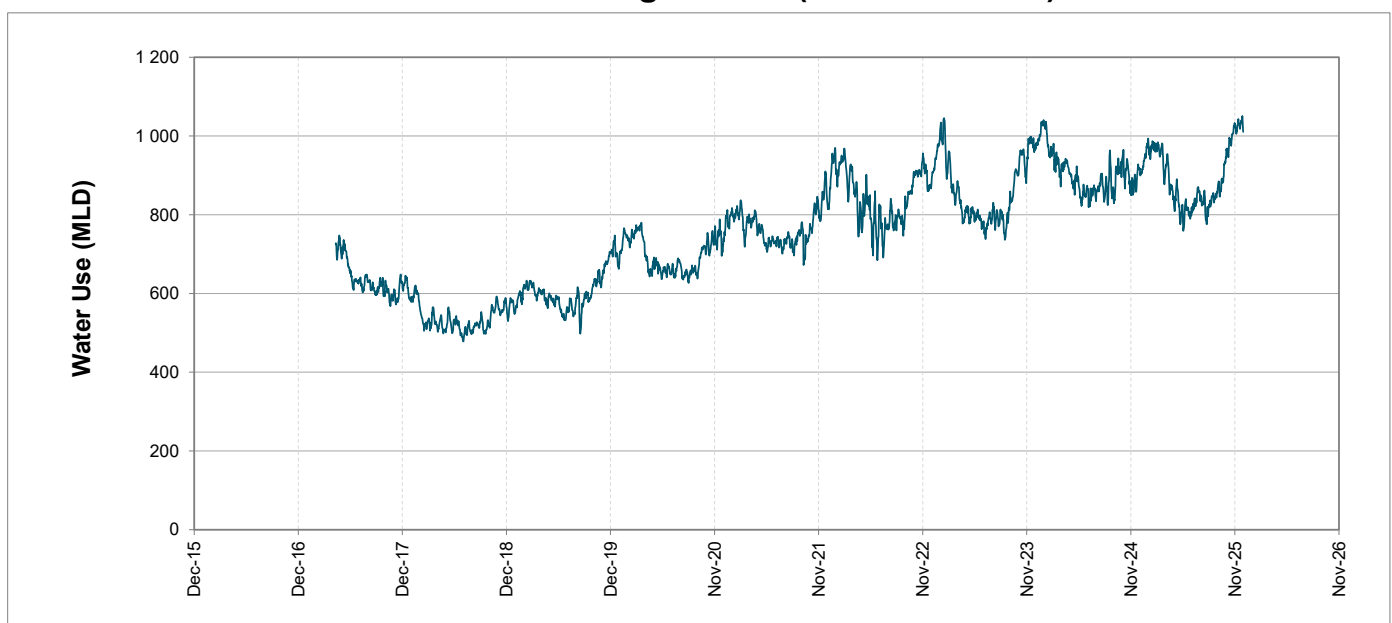
MINOR DAMS
(MLD)

4

GROUND WATER
AND SPRINGS
(MLD)

6

Overall Water Usage Trend (2010 - Present)



WCWSS means Western Cape Water Supply System

MLD means million litres per day

More information on Water Saving and Restrictions is available on the City of Cape Town's 'ThinkWater' website

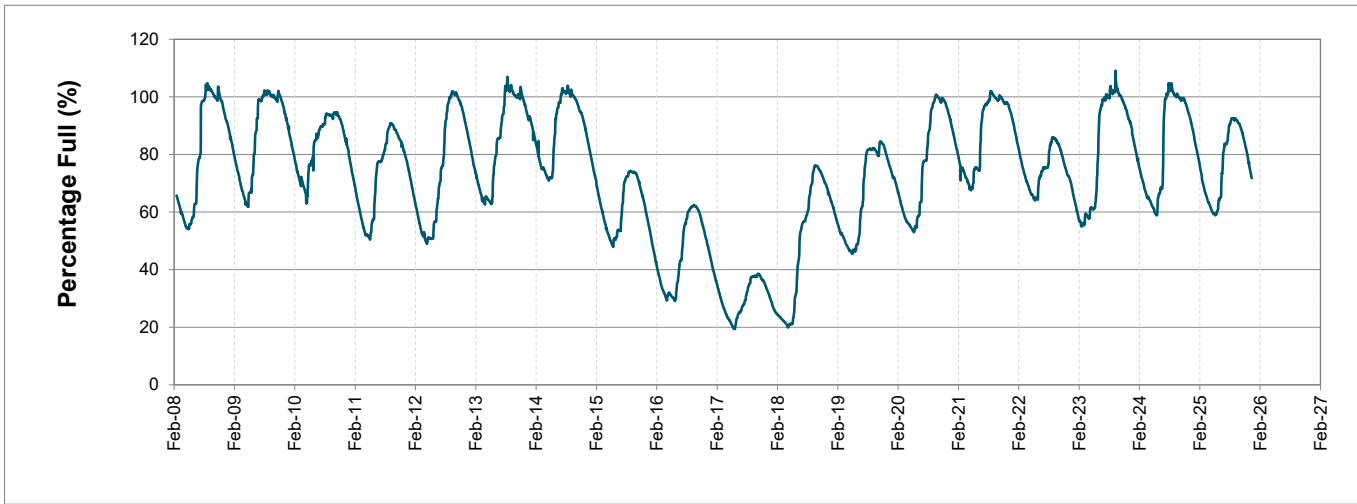
Water Stored in Major Dams (WCWSS)

Overall Percentage Full 71.4%

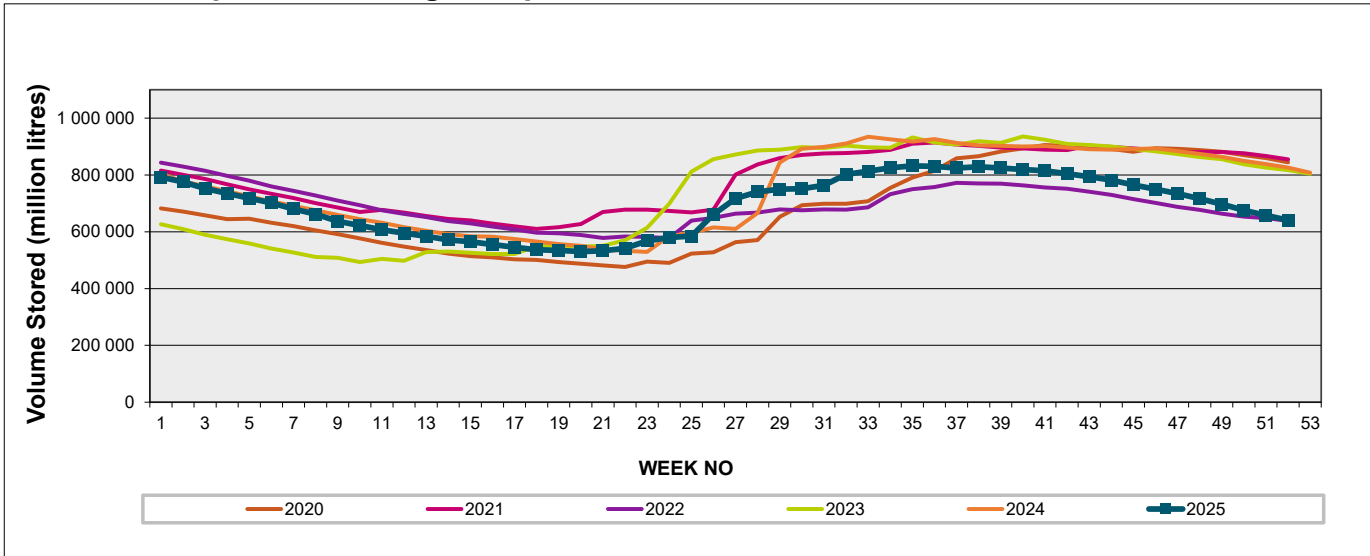
Weekly Change -1.8%

MAJOR DAMS (WCWSS)	STORAGE						
	CAPACITY	%	%	%	%	%	%
	MI	29 December 2025	Previous week	2024	2023	2022	2021
BERG RIVER	130 010	73.6	76.2	91.3	92.5	86.9	96.5
STEENBRAS LOWER	33 517	68.3	71.3	83.5	83.5	73.2	90.1
STEENBRAS UPPER	31 767	90.6	93.6	97.7	98.2	95.4	95.7
THEEWATERSKLOOF	480 188	65.9	67.9	89.9	88.9	67.0	96.9
VOËLVLEI	164 095	81.0	81.9	92.2	88.8	57.3	91.6
WEMMERSHOEK	58 644	75.1	75.7	85.9	99.1	82.9	86.7
TOTAL STORED	898 221	640 932	657 784	811 328	810 397	632 174	852 320
% STORAGE		71.4%	73.2%	90.3%	90.2%	70.4%	94.9%

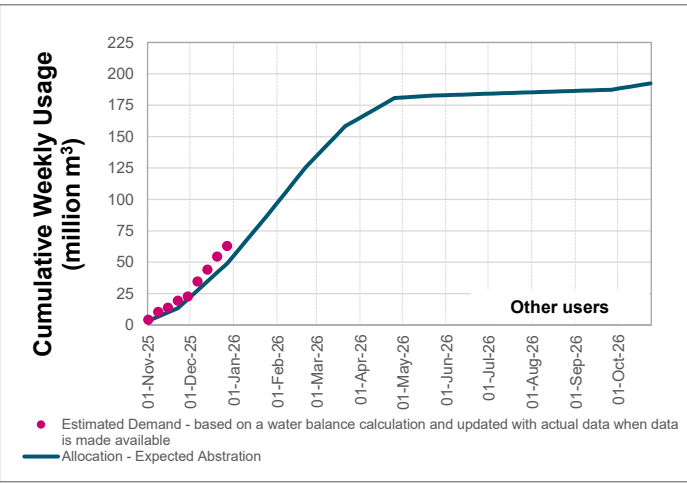
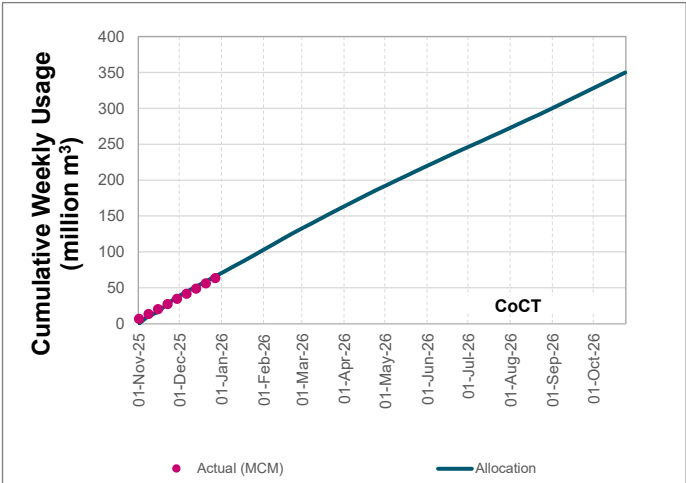
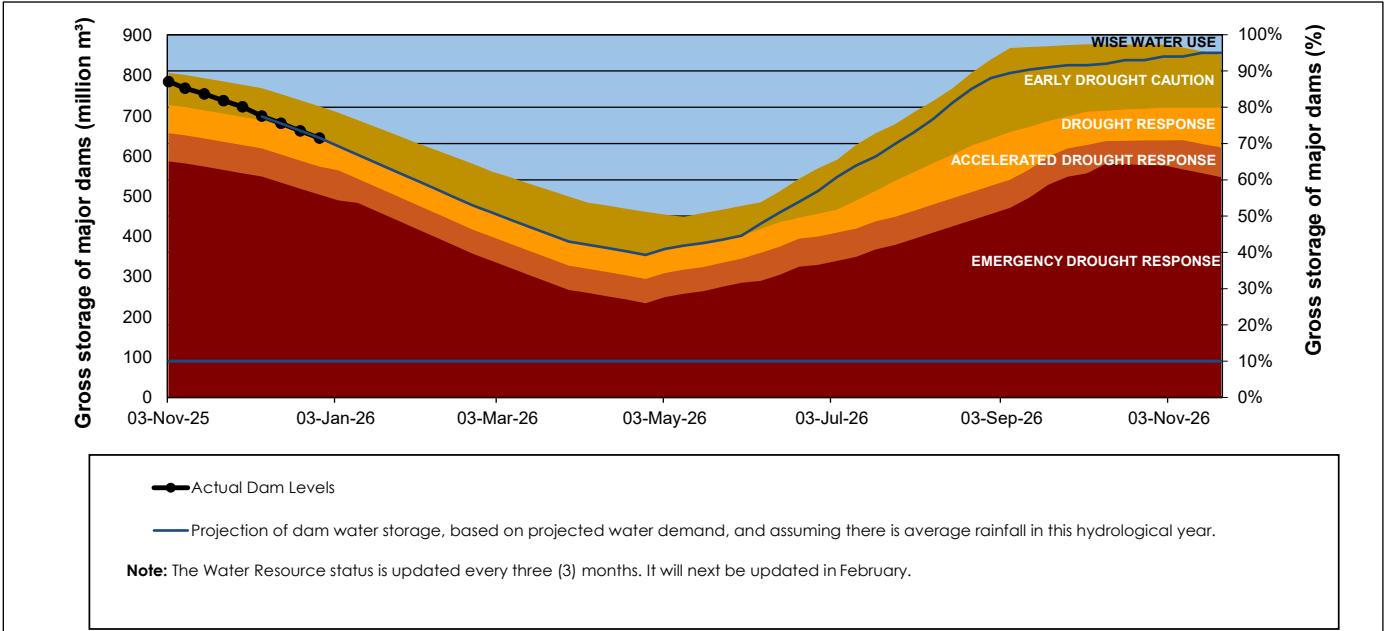
WCWSS Storage Record (2008 - Present)



WCWSS Comparative Storage Graph



Projected WCWSS Dam Storage Levels



Water Stored in Minor Dams

Overall Percentage Full	53.0	Weekly Change	-0.84
-------------------------	------	---------------	-------

MINOR DAMS	STORAGE						
	CAPACITY	%	%	%	%	%	%
	MI	29 December 2025	Previous week	2024	2023	2022	2021
ALEXANDRA (Table Mountain)	126	29.8	29.9	51.5	53.3	55.5	91.2
DE VILLIERS (Table Mountain)	243	58.6	58.9	90.0	99.3	80.5	58.2
HELY-HUTCHINSON (Table Mount)	925	14.0	14.5	74.4	54.9	33.7	44.2
KLEINPLAATS (Simon's Town)	1 368	47.8	48.5	48.2	73.7	46.8	88.3
LAND-EN-ZEEZICHT (Helderberg)	451	86.8	89.8	98.8	84.4	84.9	94.9
LEWIS GAY (Simon's Town)	182	61.1	67.6	19.4	69.2	59.8	62.6
VICTORIA (Table Mountain)	128	55.4	56.5	97.3	84.7	86.8	62.7
WOODHEAD (Table Mountain)	954	84.0	83.7	52.0	80.8	58.8	90.9
Total Stored	4 377	2320.5	2357.1	2724.0	3174.6	2365.0	3323.5
Percentages stored		53.0	53.9	62.2	72.5	54.0	75.9

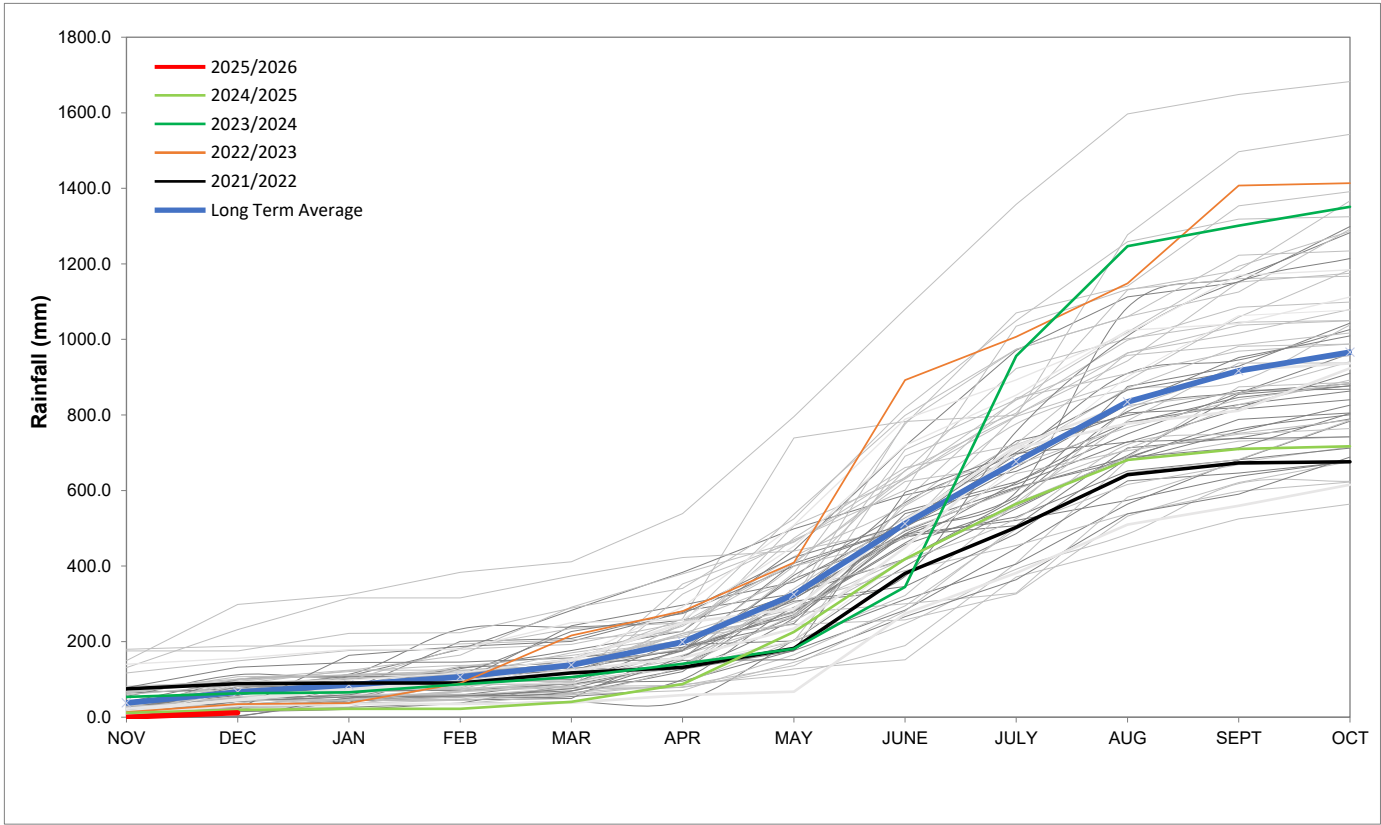
Rainfall Recorded

RAINFALL (mm)	22-Dec	23-Dec	24-Dec	25-Dec	26-Dec	27-Dec	28-Dec	Dec	
								Total*	LT Average
Blackheath Upper	0.0	0.0	0.0	0.0	0.0	0.0	0.0	4.0	13.0
Brooklands	0.0	0.0	0.0	0.0	0.0	0.0	0.0	4.0	26.9
Newlands	0.0	0.0	0.0	0.0	0.0	0.0	0.0	13.0	47.9
Steenbras	0.0	0.0	0.0	0.0	0.0	0.0	0.0	0.0	36.4
Table Mountain (Woodhead)	0.0	0.0	0.0	0.0	0.0	0.0	0.0	33.3	63.0
Theewaterskloof	1.5	0.0	3.5	0.0	0.0	0.0	0.0	9.0	20.3
Tygerberg	0.0	0.0	0.0	0.0	0.0	0.0	0.0	8.9	10.2
Voëlvlei	0.0	0.0	0.0	0.0	0.0	0.0	0.0	7.4	13.0
Wemmershoek	0.0	0.0	0.0	0.0	0.0	0.0	0.0	7.0	26.7
Wynberg	0.0	0.0	0.0	0.0	0.0	0.0	0.0	12.9	22.0

Notes: *Total/cummulative rainfall for month indicated above
LT: Long Term

Accumulated Monthly Rainfall at Wemmershoek

Note: Wemmershoek station used due to long record and mountainous location



Drinking Water Quality

SAMPLE PASS RATE

Month	Water Quality Compliance (%)	Target (%)
Dec-21	99.09	98.00
Jan-22	99.04	98.00
Feb-22	99.04	98.00
Mar-22	98.99	98.00
Apr-22	98.96	98.00
May-22	98.90	98.00
Jun-22	98.96	98.00
Jul-22	99.46	98.50
Aug-22	99.47	98.50
Sept-22	99.46	99.00
Oct-22	99.47	99.00
Nov-22	99.45	99.00
Dec-22	99.36	99.00
Jan-23	99.36	99.00
Feb-23	99.35	99.00
Mar-23	99.29	99.00
Apr-23	99.24	99.00
May-23	99.24	99.00
Jun-23	99.18	99.00
Jul-23	99.19	99.00
Aug-23	99.14	99.00
Sept-23	99.10	99.00
Oct-23	99.10	99.00
Nov-23	99.04	99.00
Dec-23	99.15	99.00
Jan-24	99.16	99.00
Feb-24	99.12	99.00
Mar-24	99.16	99.00
Apr-24	99.20	99.00
May-24	99.21	99.00
Jun-24	99.26	99.00
Jul-24	99.27	99.00
Aug-24	99.31	99.00
Sept-24	99.33	99.00
Oct-24	99.37	99.00
Nov-24	99.42	99.00
Dec-24	99.42	99.00
Jan-25	99.48	99.00
Feb-25	99.57	99.00
Mar-25	99.61	99.00
Apr-25	99.65	99.00
May-25	99.66	99.00
Jun-25	99.62	99.00
Jul-25	99.69	99.00
Aug-25	99.69	99.00
Sept-25	99.70	99.00
Oct-25	99.70	99.00

This table shows CCT drinking water quality compliance according to the South African National Standard 241:2015. Compliance, measured against all prescribed chemical and microbiological components, consistently exceeds the very high CCT target of 99%. (Overall compliance percentages of continuous sampling and analysis are released on a monthly basis.