



Headline Statistics

WCWSS DAM STORAGE
(%)

75.3

WEEKLY DAM LEVEL CHANGE
(%)

-2.30

AVERAGE TOTAL
DAILY WATER USE
(MLD)

1029

Water Resource Status

WATER RESOURCE STATUS	MEANING OF CURRENT STATUS
Early Drought Caution	<p>'Continued water wise use encouraged due to lower than anticipated dams level, cautioning possible start of a drought cycle'</p> <p>The main dams supplying the City are approximately 15% lower than last year - as shown on Page 3. While there is no immediate reason for concern and no expected restrictions for the next year, this updated drought risk status is part of the City's proactive approach to monitoring for and managing future droughts. This status and the corresponding actions are discussed in the Water Outlook 2023. The latest analysis has been incorporated into the dashboard update</p> <p>The Water Resource Status will be updated again in February 2026.</p>

Water Production from Different Sources

MAJOR DAMS
(MLD)

1008

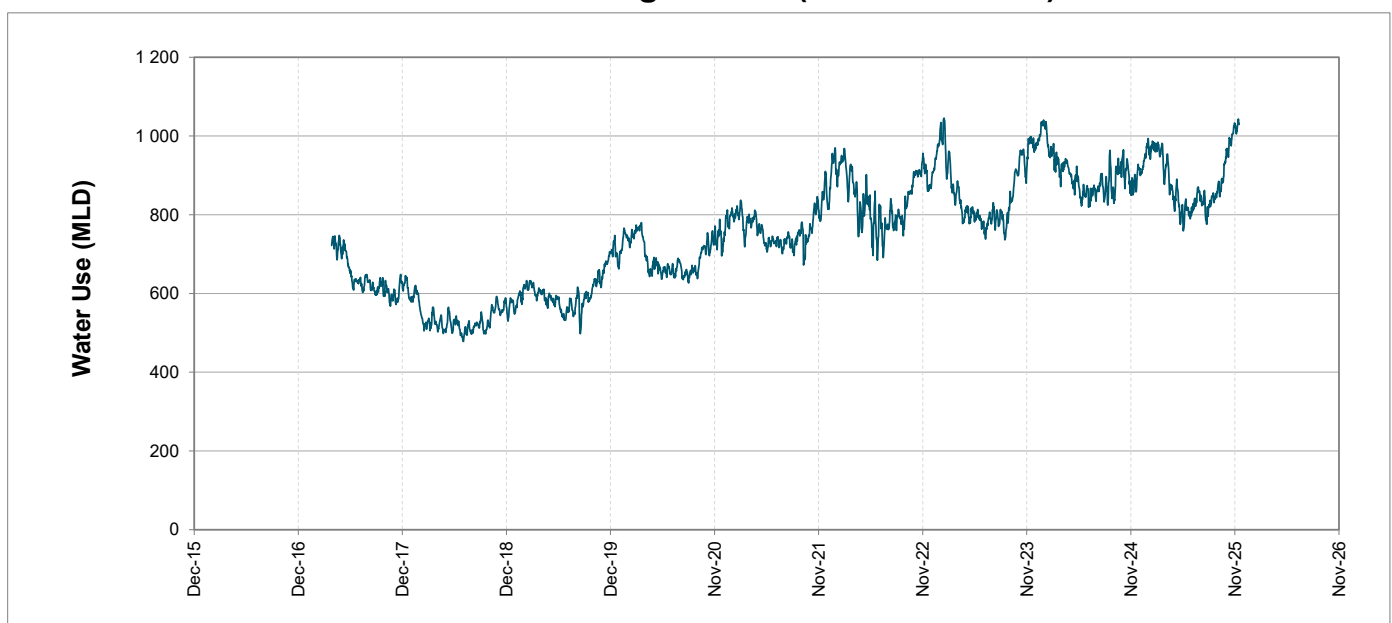
MINOR DAMS
(MLD)

11

GROUND WATER
AND SPRINGS
(MLD)

10

Overall Water Usage Trend (2010 - Present)



WCWSS means Western Cape Water Supply System

MLD means million litres per day

More information on Water Saving and Restrictions is available on the City of Cape Town's 'ThinkWater' website

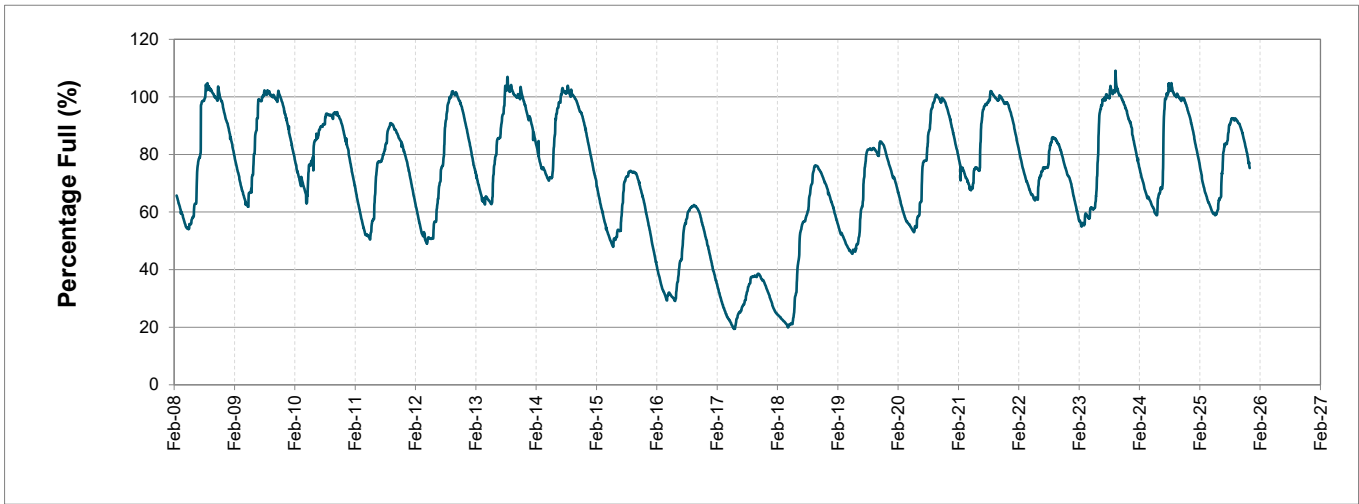
Water Stored in Major Dams (WCWSS)

Overall Percentage Full **75.3%**

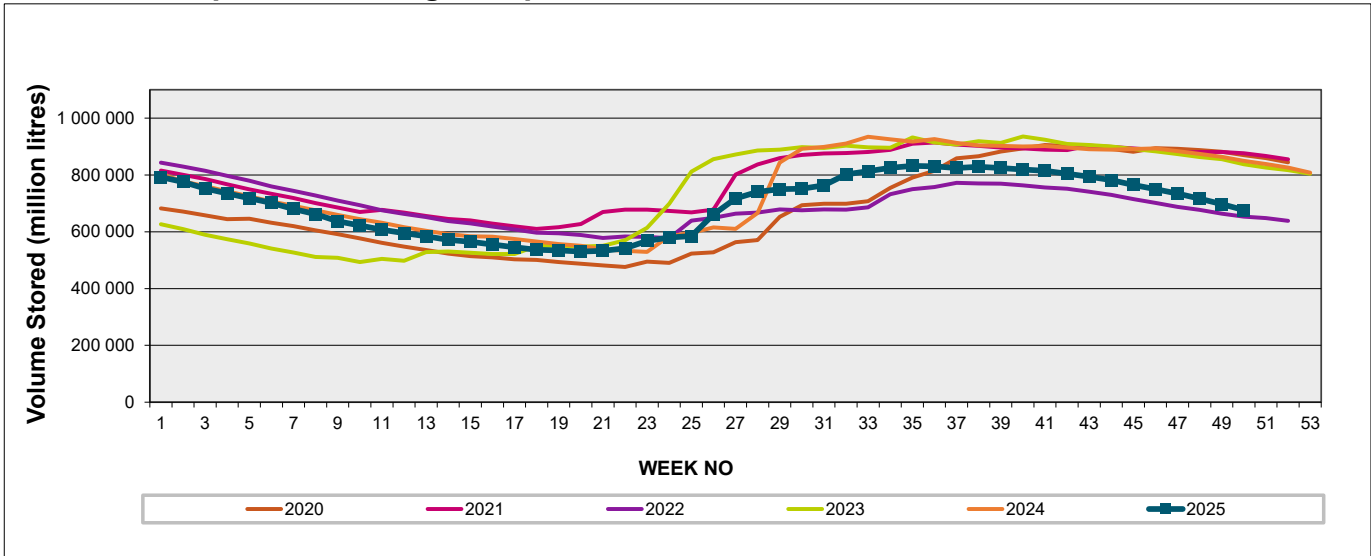
Weekly Change **-2.3%**

MAJOR DAMS (WCWSS)	STORAGE						
	CAPACITY	%	%	%	%	%	%
	MI	15 December 2025	Previous week	2024	2023	2022	2021
BERG RIVER	130 010	78.6	81.1	94.1	96.0	88.9	99.9
STEENBRAS LOWER	33 517	74.2	75.4	88.1	87.4	75.2	92.0
STEENBRAS UPPER	31 767	94.0	95.2	97.6	98.9	94.4	97.7
THEEWATERSKLOOF	480 188	70.2	72.2	93.2	90.6	69.7	99.1
VOËLVLEI	164 095	83.8	87.4	95.9	91.7	58.5	94.5
WEMMERSHOEK	58 644	76.9	78.1	90.3	99.8	84.8	90.1
TOTAL STORED	898 221	676 227	697 088	840 519	829 687	651 162	875 203
% STORAGE		75.3%	77.6%	93.6%	92.4%	72.5%	97.4%

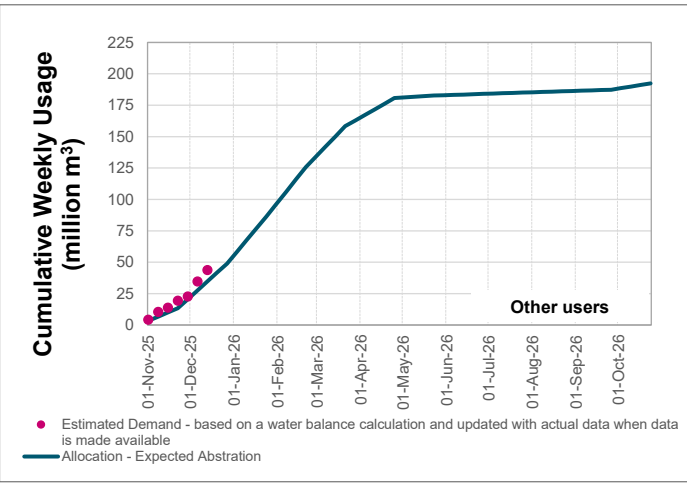
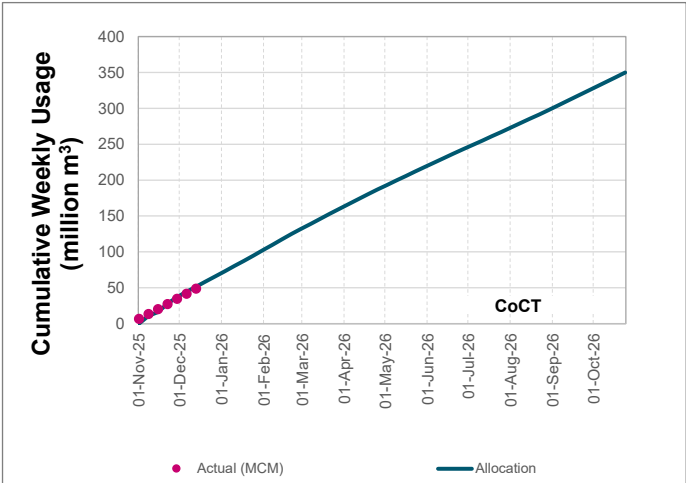
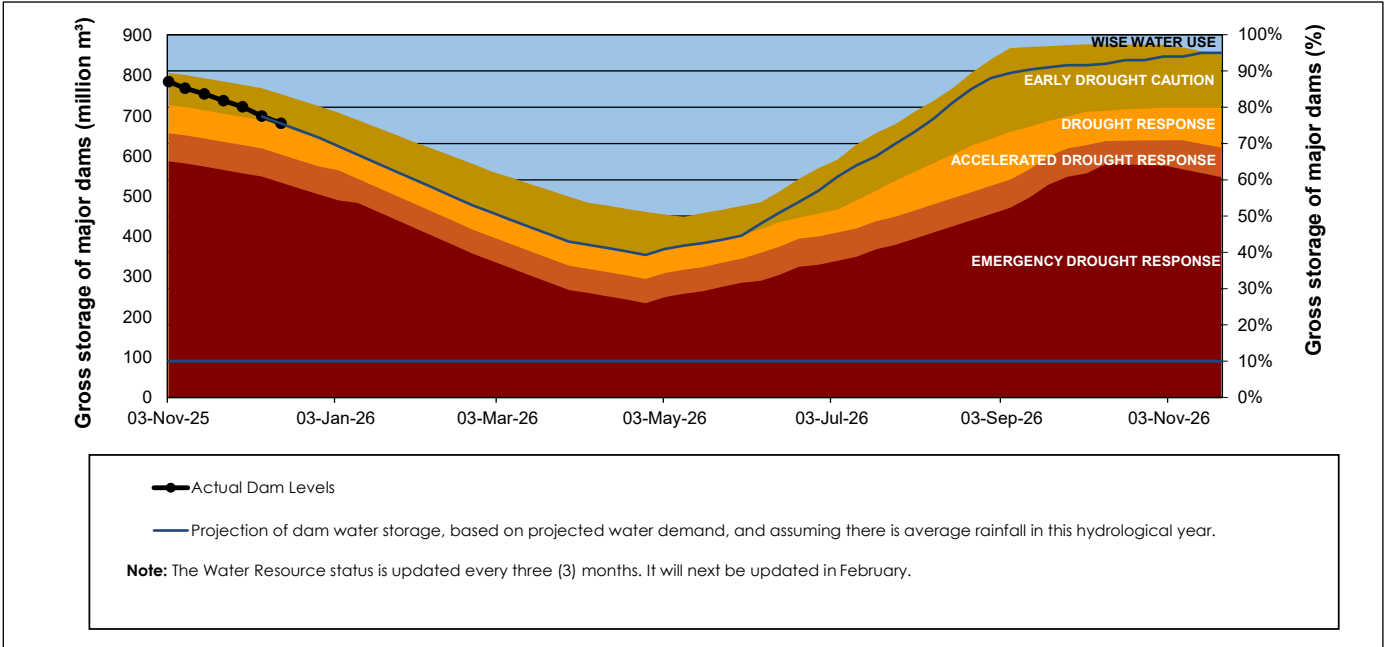
WCWSS Storage Record (2008 - Present)



WCWSS Comparative Storage Graph



Projected WCWSS Dam Storage Levels



Water Stored in Minor Dams

Overall Percentage Full	51.9	Weekly Change	-4.30
-------------------------	------	---------------	-------

MINOR DAMS	STORAGE						
	CAPACITY	%	%	%	%	%	%
	MI	15 December 2025	Previous week	2024	2023	2022	2021
ALEXANDRA (Table Mountain)	126	30.7	30.7	57.2	59.4	58.9	72.8
DE VILLIERS (Table Mountain)	243	59.4	62.0	91.1	98.8	81.5	59.4
HELY-HUTCHINSON (Table Mount	925	19.5	35.6	76.3	66.6	37.4	86.8
KLEINPLAATS (Simon's Town)	1 368	50.7	50.7	50.1	77.3	50.7	94.7
LAND-EN-ZEEZICHT (Helderberg)	451	90.9	92.0	100.0	90.8	79.1	98.3
LEWIS GAY (Simon's Town)	182	67.7	71.5	26.2	73.2	67.3	70.0
VICTORIA (Table Mountain)	128	57.8	58.0	99.3	90.8	87.1	85.1
WOODHEAD (Table Mountain)	954	65.7	67.9	62.0	73.8	54.1	62.2
Total Stored	4 377	2270.8	2459.2	2891.1	3314.6	2398.7	3561.2
Percentages stored		51.9	56.2	66.1	75.7	54.8	81.4

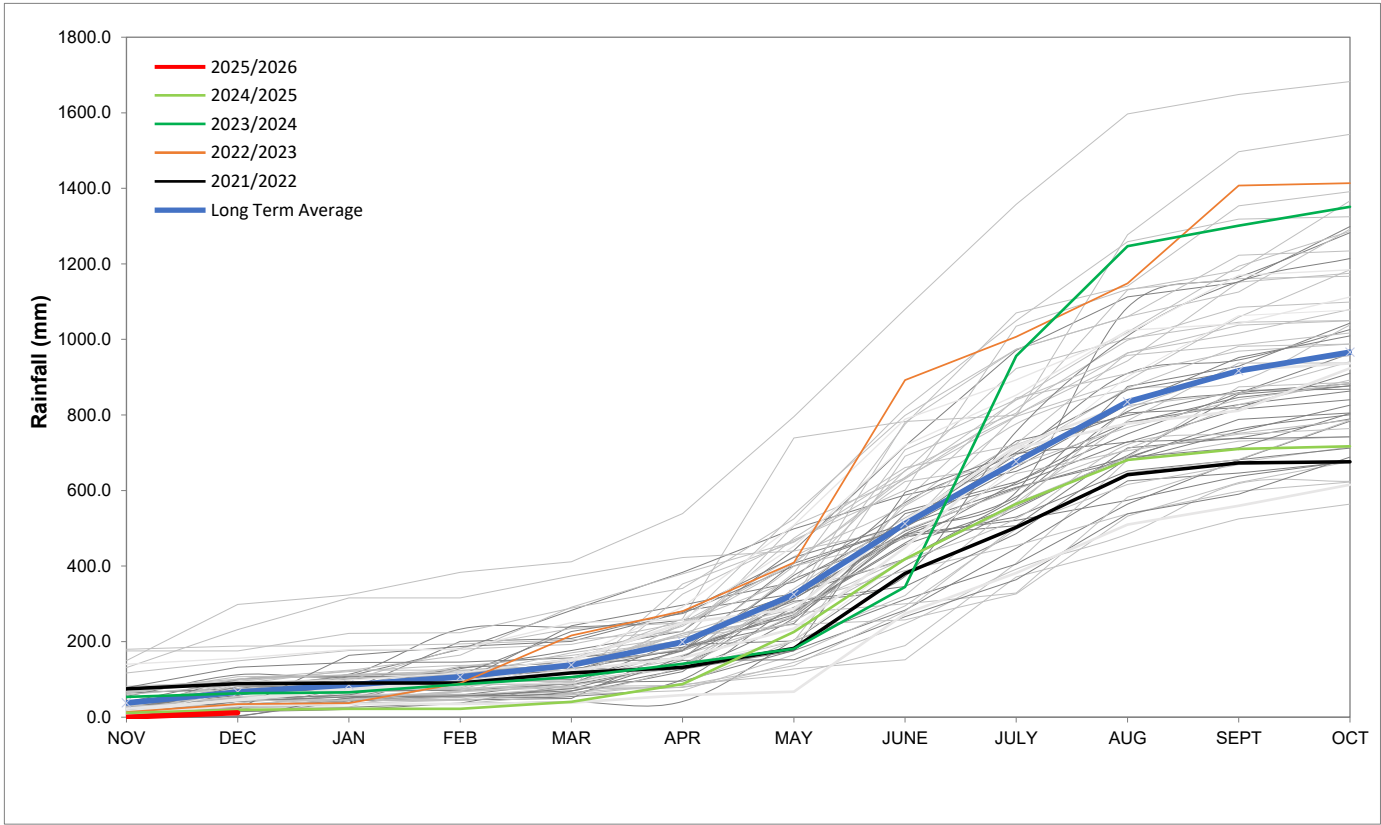
Rainfall Recorded

RAINFALL (mm)	08-Dec	09-Dec	10-Dec	11-Dec	12-Dec	13-Dec	14-Dec	Dec	
								Total*	LT Average
Blackheath Upper	0.0	0.0	0.0	0.0	4.0	0.0	0.0	4.0	13.0
Brooklands	0.0	0.0	0.0	0.0	4.0	0.0	0.0	4.0	26.9
Newlands	0.0	0.0	0.0	0.0	13.0	0.0	0.0	13.0	47.9
Steenbras	0.0	0.0	0.0	0.0	11.8	0.0	0.0	0.0	36.4
Table Mountain (Woodhead)	0.0	0.0	0.0	0.0	33.0	0.0	0.0	33.0	63.0
Theewaterskloof	0.0	0.0	0.0	0.0	4.0	0.0	0.0	4.0	20.3
Tygerberg	0.0	0.0	0.0	0.0	8.9	0.0	0.0	8.9	10.2
Voëlvlei	0.0	0.0	0.0	0.0	7.0	0.0	0.0	7.0	13.0
Wemmershoek	0.0	0.0	0.0	0.0	7.0	0.0	0.0	7.0	26.7
Wynberg	0.0	0.0	0.0	0.0	12.0	0.0	0.0	12.0	22.0

Notes: *Total/cummulative rainfall for month indicated above
LT: Long Term

Accumulated Monthly Rainfall at Wemmershoek

Note: Wemmershoek station used due to long record and mountainous location



Drinking Water Quality

SAMPLE PASS RATE

Month	Water Quality Compliance (%)	Target (%)
Dec-21	99.09	98.00
Jan-22	99.04	98.00
Feb-22	99.04	98.00
Mar-22	98.99	98.00
Apr-22	98.96	98.00
May-22	98.90	98.00
Jun-22	98.96	98.00
Jul-22	99.46	98.50
Aug-22	99.47	98.50
Sept-22	99.46	99.00
Oct-22	99.47	99.00
Nov-22	99.45	99.00
Dec-22	99.36	99.00
Jan-23	99.36	99.00
Feb-23	99.35	99.00
Mar-23	99.29	99.00
Apr-23	99.24	99.00
May-23	99.24	99.00
Jun-23	99.18	99.00
Jul-23	99.19	99.00
Aug-23	99.14	99.00
Sept-23	99.10	99.00
Oct-23	99.10	99.00
Nov-23	99.04	99.00
Dec-23	99.15	99.00
Jan-24	99.16	99.00
Feb-24	99.12	99.00
Mar-24	99.16	99.00
Apr-24	99.20	99.00
May-24	99.21	99.00
Jun-24	99.26	99.00
Jul-24	99.27	99.00
Aug-24	99.31	99.00
Sept-24	99.33	99.00
Oct-24	99.37	99.00
Nov-24	99.42	99.00
Dec-24	99.42	99.00
Jan-25	99.48	99.00
Feb-25	99.57	99.00
Mar-25	99.61	99.00
Apr-25	99.65	99.00
May-25	99.66	99.00
Jun-25	99.62	99.00
Jul-25	99.69	99.00
Aug-25	99.69	99.00
Sept-25	99.70	99.00
Oct-25	99.70	99.00

This table shows CCT drinking water quality compliance according to the South African National Standard 241:2015. Compliance, measured against all prescribed chemical and microbiological components, consistently exceeds the very high CCT target of 99%. (Overall compliance percentages of continuous sampling and analysis are released on a monthly basis.