



Headline Statistics

WCWSS DAM STORAGE
(%)

81.8

WEEKLY DAM LEVEL CHANGE
(%)

-1.70

AVERAGE TOTAL
DAILY WATER USE
(MLD)

1009

Water Resource Status

WATER RESOURCE STATUS	MEANING OF CURRENT STATUS
Early Drought Caution	<p>'Continued water wise use encouraged due to lower than anticipated dams level, cautioning possible start of a drought cycle'</p> <p>The main dams supplying the City are approximately 10% lower than last year - as shown on Page 3. While there is no immediate reason for concern and no expected restrictions for the next year, this updated drought risk status is part of the City's proactive approach to monitoring for and managing future droughts. This status and the corresponding actions are discussed in the Water Outlook 2022.</p> <p>The Water Resource Status will be updated again in December 2025.</p>

Water Production from Different Sources

MAJOR DAMS
(MLD)

987

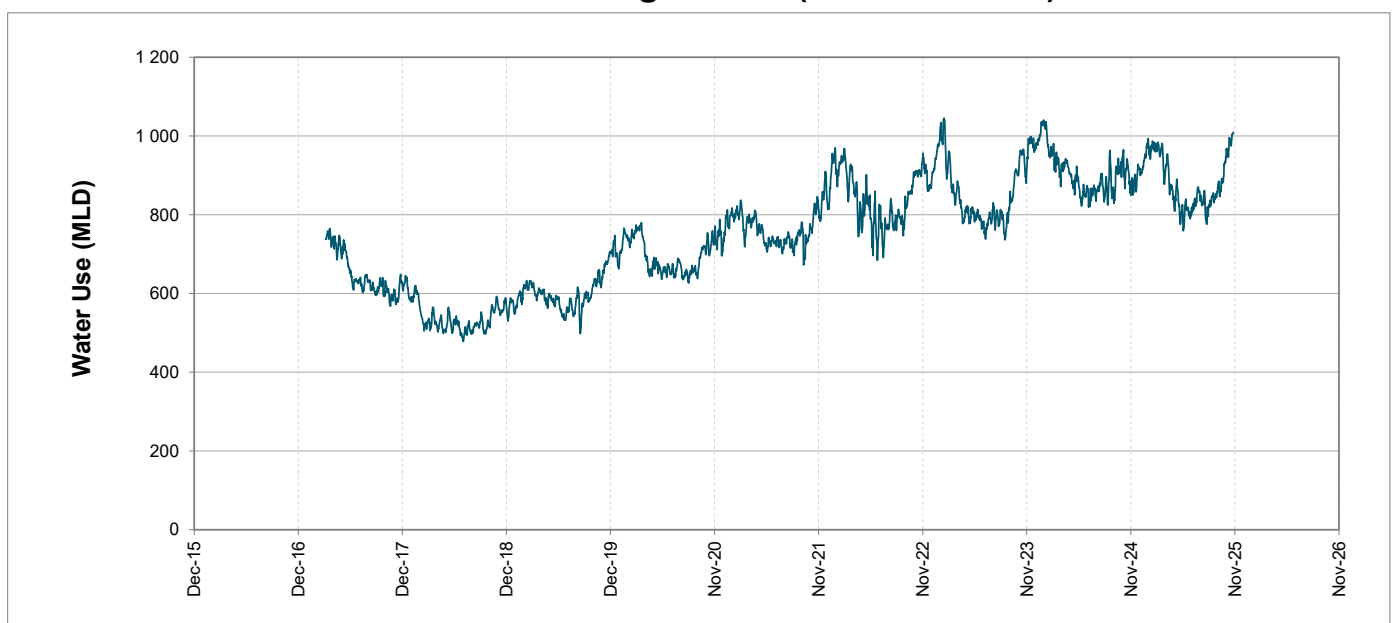
MINOR DAMS
(MLD)

16

GROUND WATER
AND SPRINGS
(MLD)

6

Overall Water Usage Trend (2010 - Present)



WCWSS means Western Cape Water Supply System

MLD means million litres per day

More information on Water Saving and Restrictions is available on the City of Cape Town's 'ThinkWater' website

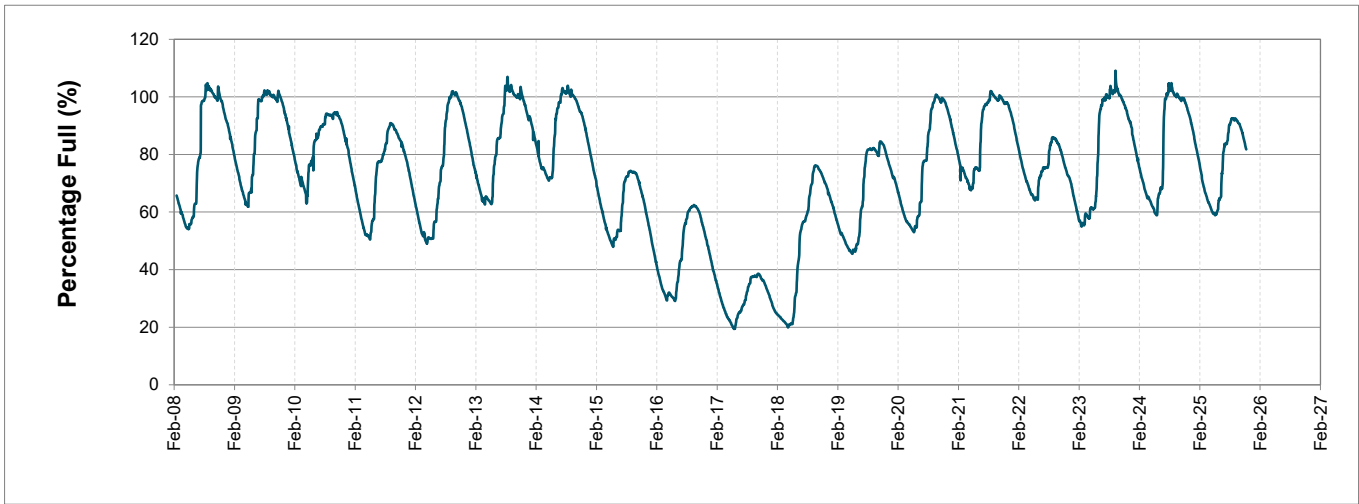
Water Stored in Major Dams (WCWSS)

Overall Percentage Full 81.8%

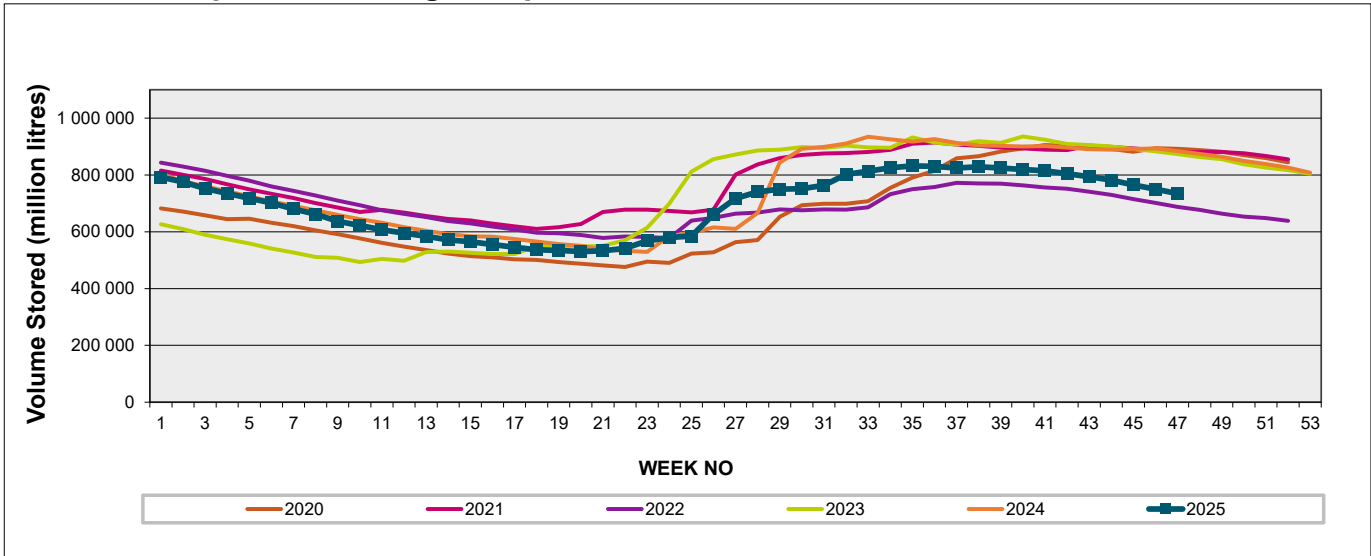
Weekly Change -1.7%

MAJOR DAMS (WCWSS)	STORAGE						
	CAPACITY	%	%	%	%	%	%
	MI	24 November 2025	Previous week	2024	2023	2022	2021
BERG RIVER	130 010	88.3	91.7	98.2	99.3	92.9	98.8
STEENBRAS LOWER	33 517	80.7	83.4	90.1	91.8	80.9	90.4
STEENBRAS UPPER	31 767	98.2	99.0	97.2	94.9	91.5	98.3
THEEWATERSKLOOF	480 188	75.8	77.1	97.2	95.4	73.5	98.9
VOËLVLEI	164 095	91.9	93.7	99.9	95.7	61.9	96.7
WEMMERSHOEK	58 644	79.6	80.5	95.9	100.1	86.1	91.8
TOTAL STORED	898 221	734 444	749 764	875 560	863 876	681 999	877 586
% STORAGE		81.8%	83.5%	97.5%	96.2%	75.9%	97.7%

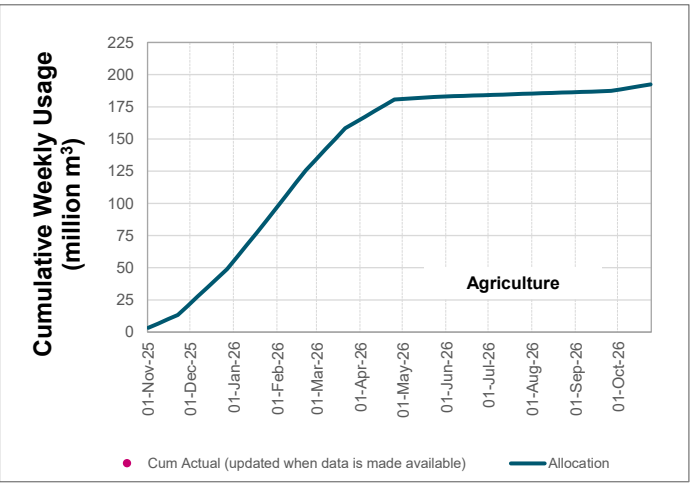
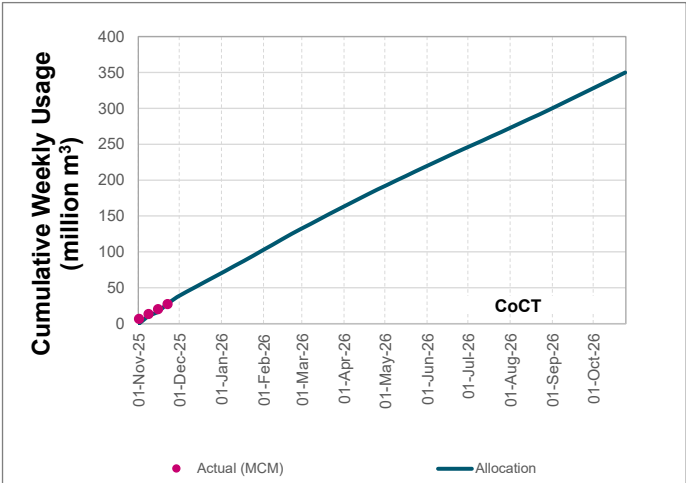
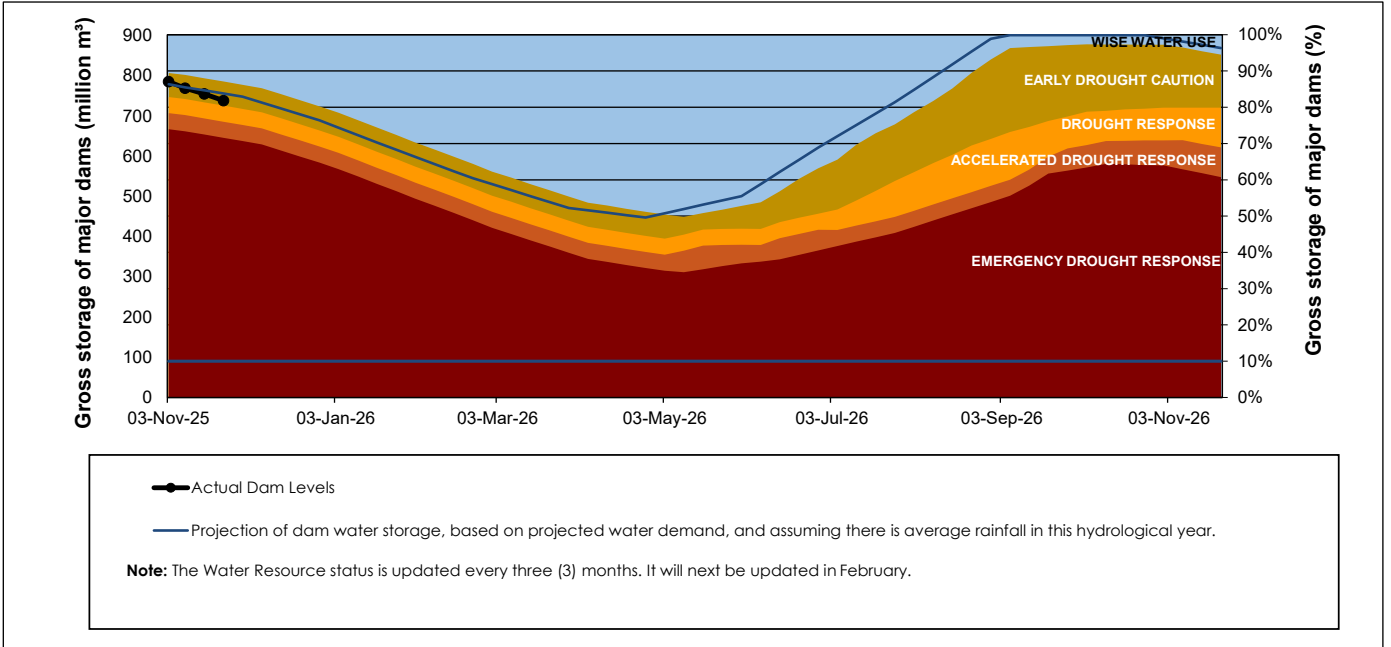
WCWSS Storage Record (2008 - Present)



WCWSS Comparative Storage Graph



Projected WCWSS Dam Storage Levels



Water Stored in Minor Dams

Overall Percentage Full	63.2	Weekly Change	-3.20
-------------------------	------	---------------	-------

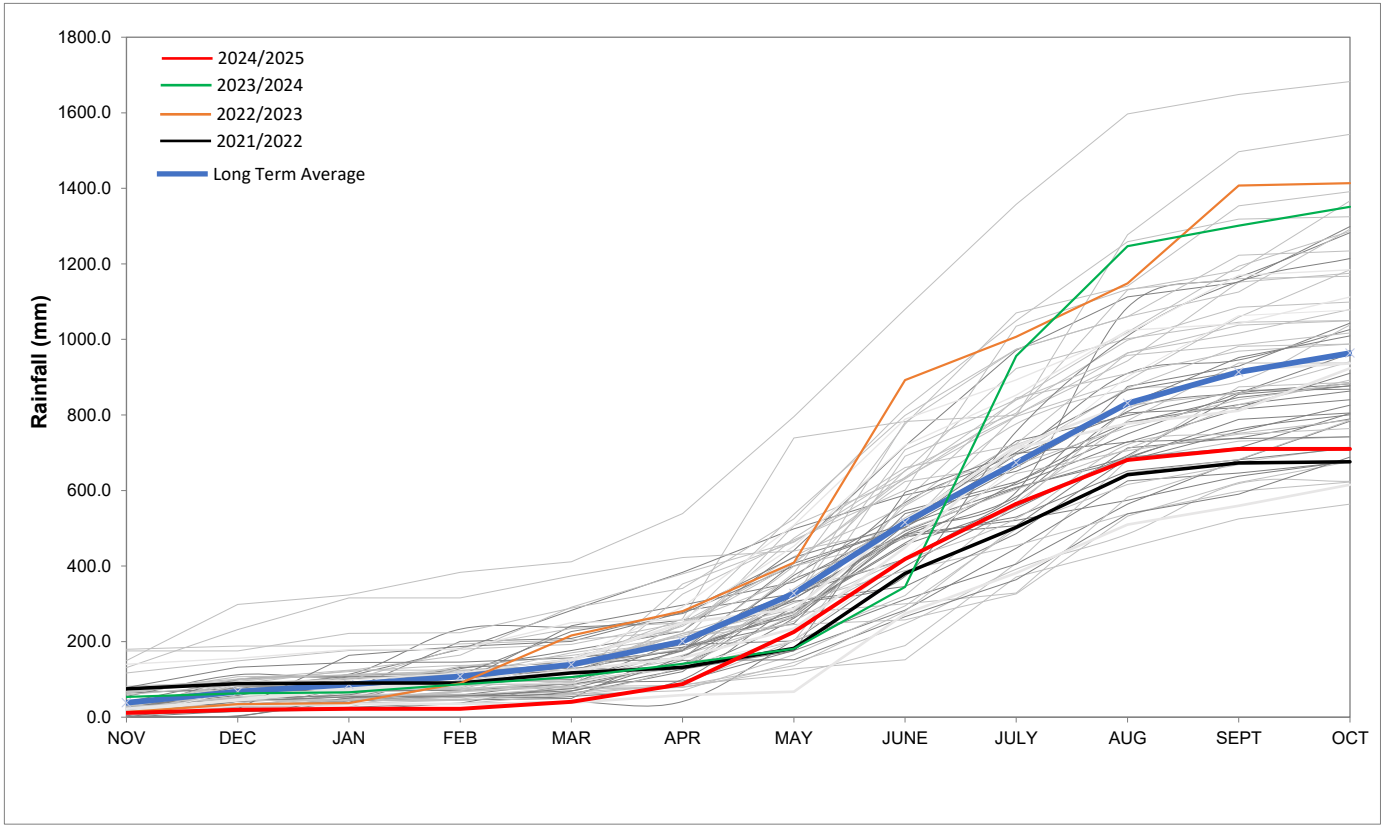
MINOR DAMS	STORAGE						
	CAPACITY	%	%	%	%	%	%
	MI	24 November 2025	Previous week	2024	2023	2022	2021
ALEXANDRA (Table Mountain)	126	31.9	32.5	60.4	67.1	65.4	56.6
DE VILLIERS (Table Mountain)	243	73.8	77.1	84.9	96.3	84.7	56.4
HELY-HUTCHINSON (Table Mount)	925	65.1	77.5	55.7	88.4	36.9	83.4
KLEINPLAATS (Simon's Town)	1 368	52.8	52.8	53.5	85.2	56.9	93.6
LAND-EN-ZEEZICHT (Helderberg)	451	95.5	97.7	98.3	99.4	80.8	100.0
LEWIS GAY (Simon's Town)	182	91.5	97.2	61.1	93.0	61.8	82.4
VICTORIA (Table Mountain)	128	62.4	63.0	92.7	94.3	90.8	96.2
WOODHEAD (Table Mountain)	954	60.0	59.5	68.5	52.5	69.3	61.5
Total Stored	4 377	2768.4	2908.5	2838.8	3497.5	2638.0	3524.4
Percentages stored		63.2	66.4	64.9	79.9	60.3	80.5

Rainfall Recorded

RAINFALL (mm)	17-Nov	18-Nov	19-Nov	20-Nov	21-Nov	22-Nov	23-Nov	Nov	
								Total*	LT Average
Blackheath Upper	0.0	0.0	0.0	0.0	0.0	0.0	0.0	0.0	27.1
Brooklands	0.0	0.0	0.0	0.0	0.0	0.0	0.0	0.0	50.8
Newlands	0.0	0.0	0.0	0.0	0.0	0.0	0.0	0.0	60.3
Steenbras	0.0	0.0	0.0	0.0	0.0	0.0	0.0	0.0	49.3
Table Mountain (Woodhead)	0.0	0.0	0.0	0.0	0.0	0.0	0.0	0.0	69.0
Theewaterskloof	0.0	0.0	0.0	0.0	0.0	0.0	0.0	0.0	36.4
Tygerberg	0.0	0.0	0.0	0.0	0.0	0.0	0.0	0.0	24.5
Voëlvlei	0.0	0.0	0.0	0.0	0.0	0.0	0.0	0.0	29.0
Wemmershoek	0.0	0.0	0.0	0.0	0.0	0.0	0.0	0.0	39.8
Wynberg	0.0	0.0	0.0	0.0	0.0	0.0	0.0	0.0	44.9
Notes: *Total/cummulative rainfall for month indicated above LT: Long Term									

Accumulated Monthly Rainfall at Wemmershoek

Note: Wemmershoek station used due to long record and mountainous location



Drinking Water Quality

SAMPLE PASS RATE		
Month	Water Quality Compliance (%)	Target (%)
Dec-21	99.09	98.00
Jan-22	99.04	98.00
Feb-22	99.04	98.00
Mar-22	98.99	98.00
Apr-22	98.96	98.00
May-22	98.90	98.00
Jun-22	98.96	98.00
Jul-22	99.46	98.50
Aug-22	99.47	98.50
Sept-22	99.46	99.00
Oct-22	99.47	99.00
Nov-22	99.45	99.00
Dec-22	99.36	99.00
Jan-23	99.36	99.00
Feb-23	99.35	99.00
Mar-23	99.29	99.00
Apr-23	99.24	99.00
May-23	99.24	99.00
Jun-23	99.18	99.00
Jul-23	99.19	99.00
Aug-23	99.14	99.00
Sept-23	99.10	99.00
Oct-23	99.10	99.00
Nov-23	99.04	99.00
Dec-23	99.15	99.00
Jan-24	99.16	99.00
Feb-24	99.12	99.00
Mar-24	99.16	99.00
Apr-24	99.20	99.00
May-24	99.21	99.00
Jun-24	99.26	99.00
Jul-24	99.27	99.00
Aug-24	99.31	99.00
Sept-24	99.33	99.00
Oct-24	99.37	99.00
Nov-24	99.42	99.00
Dec-24	99.42	99.00
Jan-25	99.48	99.00
Feb-25	99.57	99.00
Mar-25	99.61	99.00
Apr-25	99.65	99.00
May-25	99.66	99.00
Jun-25	99.62	99.00
Jul-25	99.69	99.00
Aug-25	99.69	99.00
Sept-25	99.70	99.00

This table shows CCT drinking water quality compliance according to the South African National Standard 241:2015. Compliance, measured against all prescribed chemical and microbiological components, consistently exceeds the very high CCT target of 99%. (Overall compliance percentages of continuous sampling and analysis are released on a monthly basis.