



Headline Statistics

WCWSS DAM STORAGE
(%)

87.0

WEEKLY DAM LEVEL CHANGE
(%)

-1.40

AVERAGE TOTAL
DAILY WATER USE
(MLD)

961

Water Resource Status

WATER RESOURCE STATUS	MEANING OF CURRENT STATUS
Early Drought Caution	<p>'Continued water wise use encouraged due to lower than anticipated dams level, cautioning possible start of a drought cycle'</p> <p>The main dams supplying the City are approximately 10% lower than last year - as shown on Page 3. While there is no immediate reason for concern and no expected restrictions for the next year, this updated drought risk status is part of the City's proactive approach to monitoring for and managing future droughts. This status and the corresponding actions are discussed in the Water Outlook 2022.</p> <p>The Water Resource Status will be updated again in December 2025.</p>

Water Production from Different Sources

MAJOR DAMS
(MLD)

934

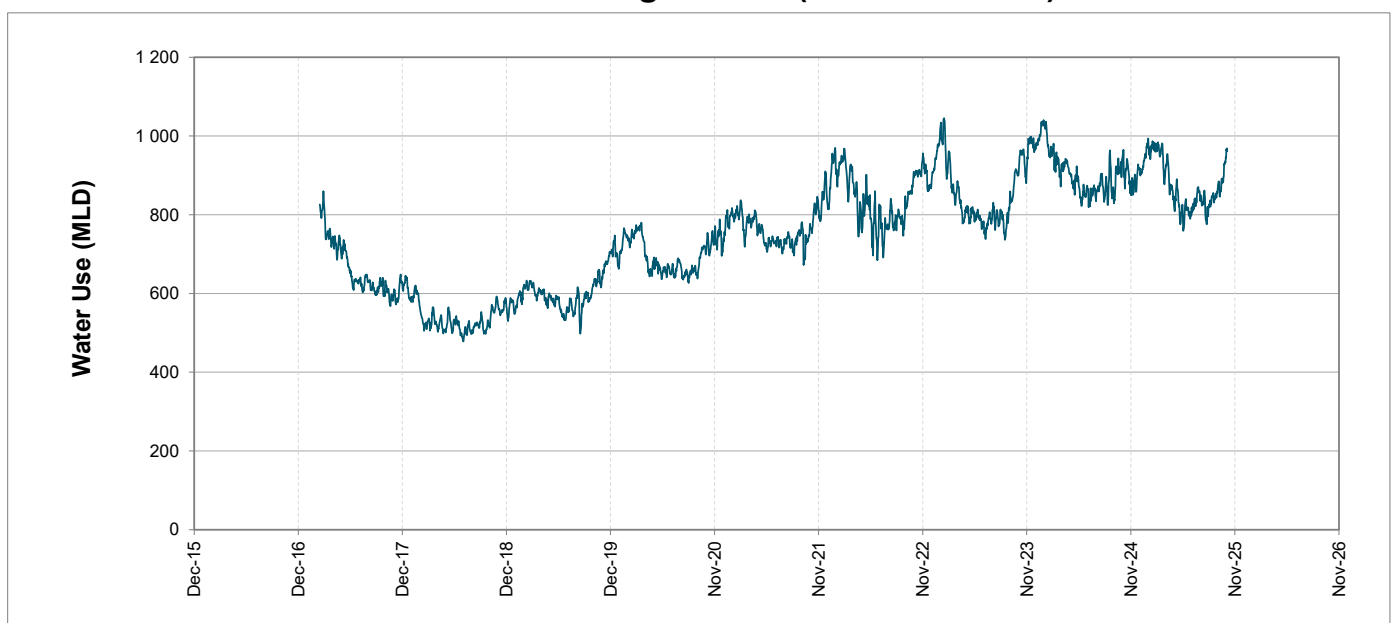
MINOR DAMS
(MLD)

21

GROUND WATER
AND SPRINGS
(MLD)

6

Overall Water Usage Trend (2010 - Present)



WCWSS means Western Cape Water Supply System

MLD means million litres per day

More information on Water Saving and Restrictions is available on the City of Cape Town's 'ThinkWater' website

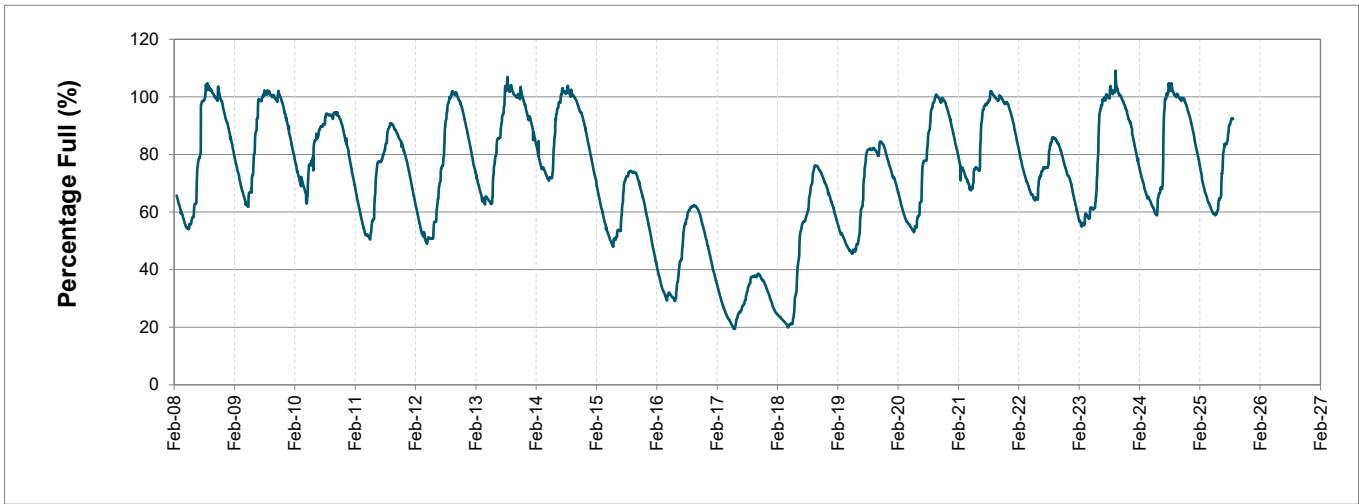
Water Stored in Major Dams (WCWSS)

Overall Percentage Full 87.0%

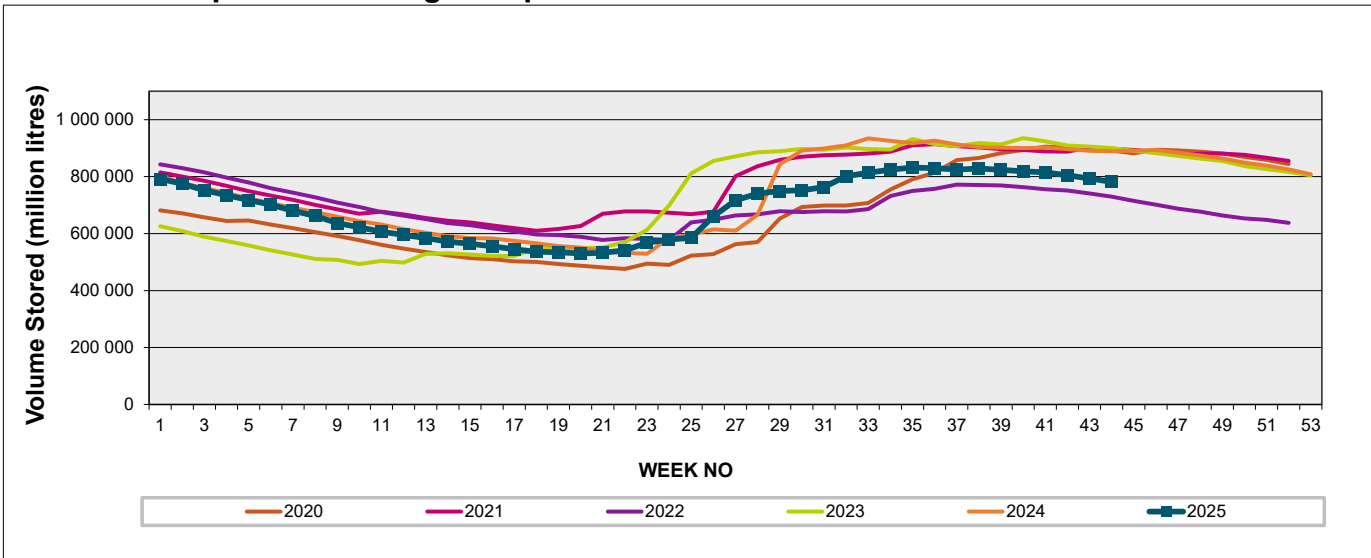
Weekly Change -1.4%

MAJOR DAMS (WCWSS)	STORAGE						
	CAPACITY	%	%	%	%	%	%
	MI	03 November 2025	Previous week	2024	2023	2022	2021
BERG RIVER	130 010	98.3	99.6	100.2	99.7	96.3	100.7
STEENBRAS LOWER	33 517	88.0	90.5	94.4	95.3	85.2	94.5
STEENBRAS UPPER	31 767	99.6	98.8	94.8	94.0	96.6	98.7
THEEWATERSKLOOF	480 188	80.3	81.7	99.2	100.3	78.8	101.4
VOËLVLEI	164 095	96.7	98.1	100.5	98.1	67.7	98.2
WEMMERSHOEK	58 644	82.7	83.7	99.6	99.9	87.1	96.0
TOTAL STORED	898 221	781 682	793 606	891 540	892 758	725 064	898 165
% STORAGE		87.0%	88.4%	99.3%	99.4%	80.7%	100.0%

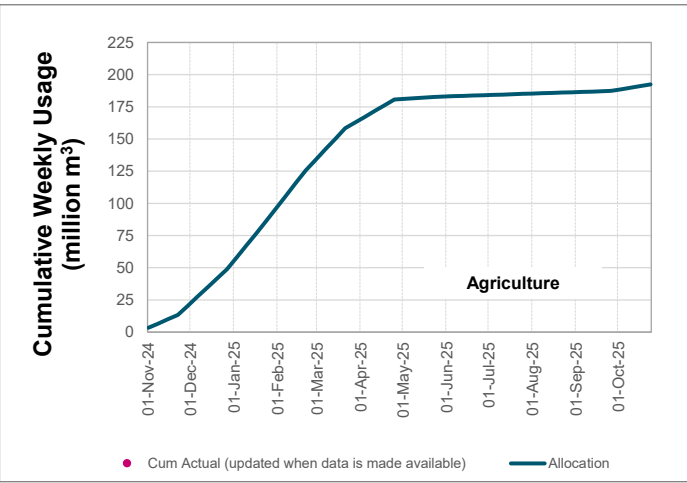
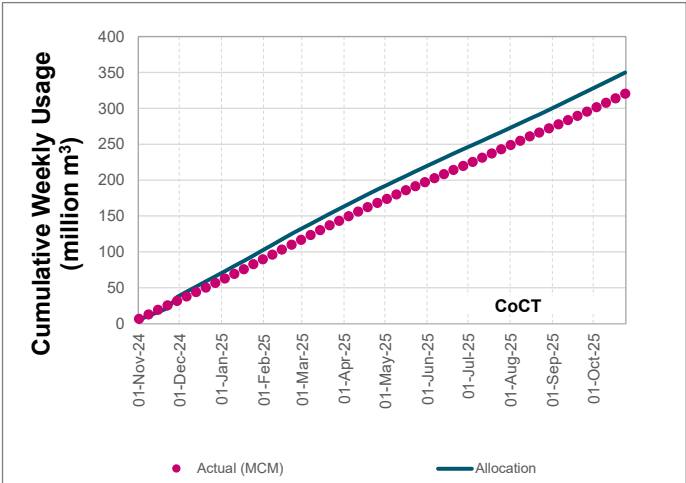
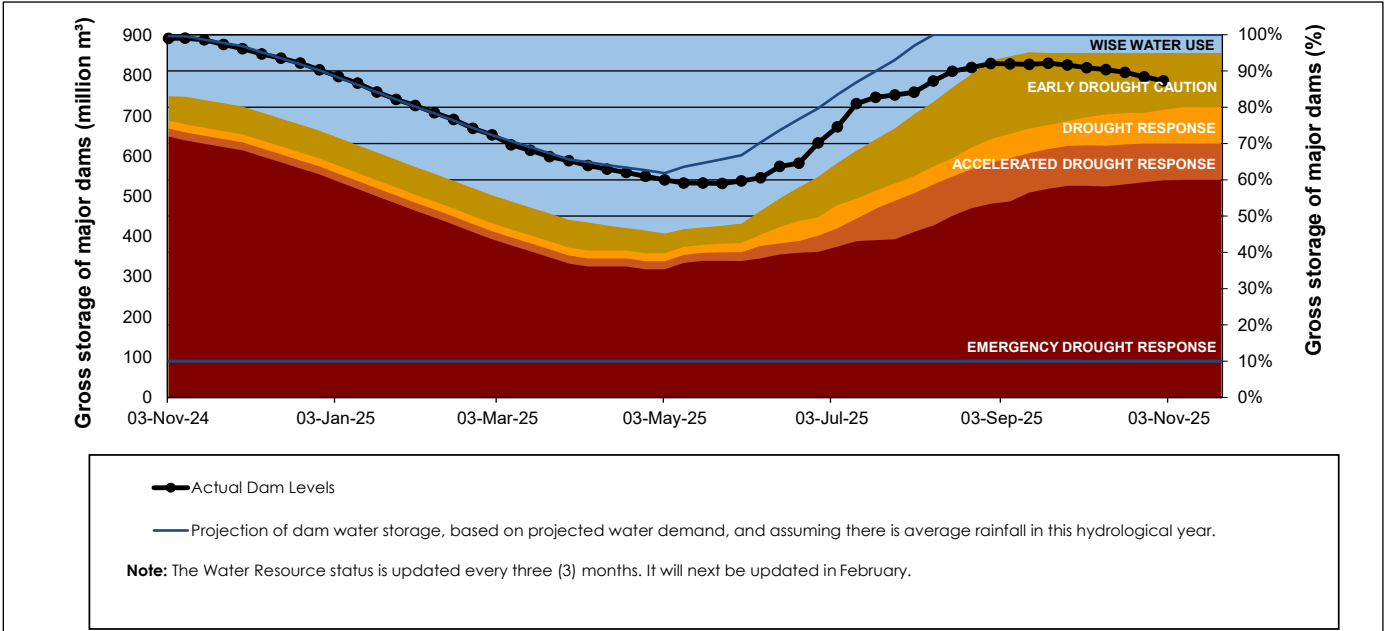
WCWSS Storage Record (2008 - Present)



WCWSS Comparative Storage Graph



Projected WCWSS Dam Storage Levels



Water Stored in Minor Dams

Overall Percentage Full	71.3	Weekly Change	-4.13
-------------------------	------	---------------	-------

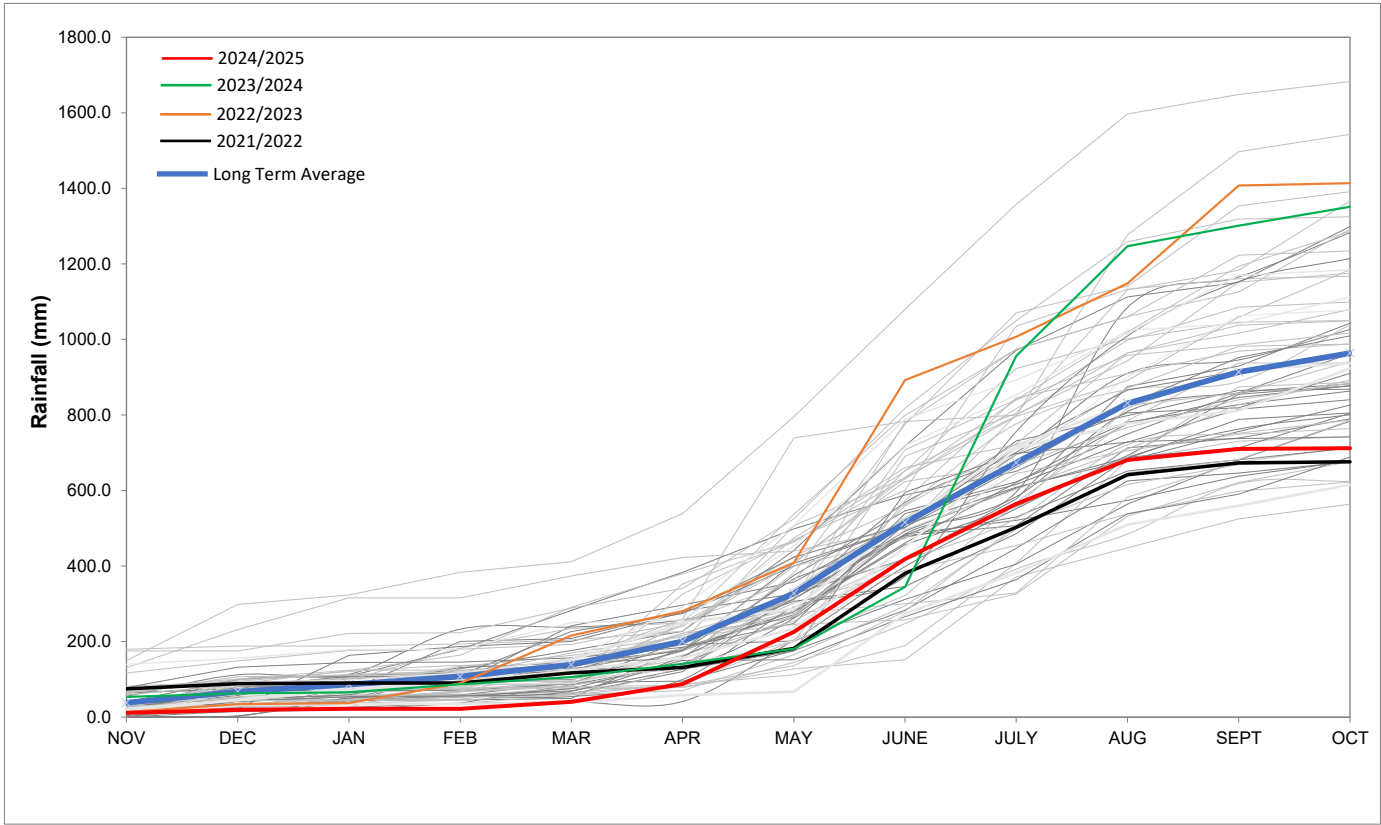
MINOR DAMS	STORAGE						
	CAPACITY	%	%	%	%	%	%
	MI	03 November 2025	Previous week	2024	2023	2022	2021
ALEXANDRA (Table Mountain)	126	55.0	57.7	71.9	75.8	73.2	61.5
DE VILLIERS (Table Mountain)	243	73.8	66.4	97.4	92.4	83.1	70.1
HELY-HUTCHINSON (Table Mount)	925	98.3	98.8	71.2	98.1	61.2	100.3
KLEINPLAATS (Simon's Town)	1 368	55.7	58.0	58.7	94.3	66.8	95.8
LAND-EN-ZEEZICHT (Helderberg)	451	100.0	100.0	99.8	99.4	80.7	100.0
LEWIS GAY (Simon's Town)	182	90.9	98.2	89.5	100.0	51.9	94.5
VICTORIA (Table Mountain)	128	66.4	67.0	98.1	96.6	96.2	101.5
WOODHEAD (Table Mountain)	954	54.7	70.1	72.3	52.6	67.1	60.4
Total Stored	4 377	3119.0	3299.6	3193.5	3723.9	2968.1	3765.5
Percentages stored		71.3	75.4	73.0	85.1	67.8	86.0

Rainfall Recorded

RAINFALL (mm)	27-Oct	28-Oct	29-Oct	30-Oct	31-Oct	01-Nov	02-Nov	Nov	
								Total*	LT Average
Blackheath Upper	0.0	0.0	0.0	0.0	2.0	0.0	0.0	0.0	27.1
Brooklands	0.0	0.0	0.0	0.0	2.0	0.0	0.0	0.0	50.8
Newlands	0.0	0.0	0.0	0.0	8.3	0.0	0.0	0.0	60.3
Steenbras	0.0	0.0	0.0	0.0	9.2	0.0	0.0	0.0	49.3
Table Mountain (Woodhead)	0.0	0.0	0.0	0.0	12.0	0.0	0.0	0.0	69.0
Theewaterskloof	0.0	0.0	0.0	0.0	4.4	0.0	0.0	0.0	36.4
Tygerberg	0.0	0.0	0.0	0.0	3.3	0.0	0.0	0.0	24.5
Voëlvlei	0.0	0.0	0.0	0.0	0.8	0.0	0.0	0.0	29.0
Wemmershoek	0.0	0.0	0.0	0.0	2.0	0.0	0.0	0.0	39.8
Wynberg	0.0	0.0	0.0	0.0	3.0	0.0	0.0	0.0	44.9
Notes: *Total/cummulative rainfall for month indicated above									
LT: Long Term									

Accumulated Monthly Rainfall at Wemmershoek

Note: Wemmershoek station used due to long record and mountainous location



Drinking Water Quality

SAMPLE PASS RATE		
Month	Water Quality Compliance (%)	Target (%)
Nov-21	99.11	98
Dec-21	99.09	98
Jan-22	99.04	98
Feb-22	99.04	98
Mar-22	98.99	98
Apr-22	98.96	98
May-22	98.90	98
Jun-22	98.96	98
Jul-22	99.46	99
Aug-22	99.47	99
Sept-22	99.46	99.00
Oct-22	99.47	99.00
Nov-22	99.45	99.00
Dec-22	99.36	99.00
Jan-23	99.36	99.00
Feb-23	99.35	99.00
Mar-23	99.29	99.00
Apr-23	99.24	99.00
May-23	99.24	99.00
Jun-23	99.18	99.00
Jul-23	99.19	99.00
Aug-23	99.14	99.00
Sept-23	99.10	99.00
Oct-23	99.10	99.00
Nov-23	99.04	99.00
Dec-23	99.15	99.00
Jan-24	99.16	99.00
Feb-24	99.12	99.00
Mar-24	99.16	99.00
Apr-24	99.20	99.00
May-24	99.21	99.00
Jun-24	99.26	99.00
Jul-24	99.27	99.00
Aug-24	99.31	99.00
Sept-24	99.33	99.00
Oct-24	99.37	99.00
Nov-24	99.42	99.00
Dec-24	99.42	99.00
Jan-25	99.48	99.00
Feb-25	99.57	99.00
Mar-25	99.61	99.00
Apr-25	99.65	99.00
May-25	99.66	99.00
Jun-25	99.62	99.00
Jul-25	99.69	99.00
Aug-25	99.69	99.00

This table shows CCT drinking water quality compliance according to the South African National Standard 241:2015. Compliance, measured against all prescribed chemical and microbiological components, consistently exceeds the very high CCT target of 99%. (Overall compliance percentages of continuous sampling and analysis are released on a monthly basis.