



Headline Statistics

WCWSS DAM STORAGE
(%)

89.9

WEEKLY DAM LEVEL CHANGE
(%)

-0.80

AVERAGE TOTAL
DAILY WATER USE
(MLD)

883

Water Resource Status

WATER RESOURCE STATUS	MEANING OF CURRENT STATUS
Early Drought Caution	<p>'Continued water wise use encouraged due to lower than anticipated dams level, cautioning possible start of a drought cycle'</p> <p>The main dams supplying the City are approximately 10% lower than last year - as shown on Page 3. While there is no immediate reason for concern and no expected restrictions for the next year, this updated drought risk status is part of the City's proactive approach to monitoring for and managing future droughts. This status and the corresponding actions are discussed in the Water Outlook 2022.</p> <p>The Water Resource Status will be updated again in December 2025.</p>

Water Production from Different Sources

MAJOR DAMS
(MLD)

872

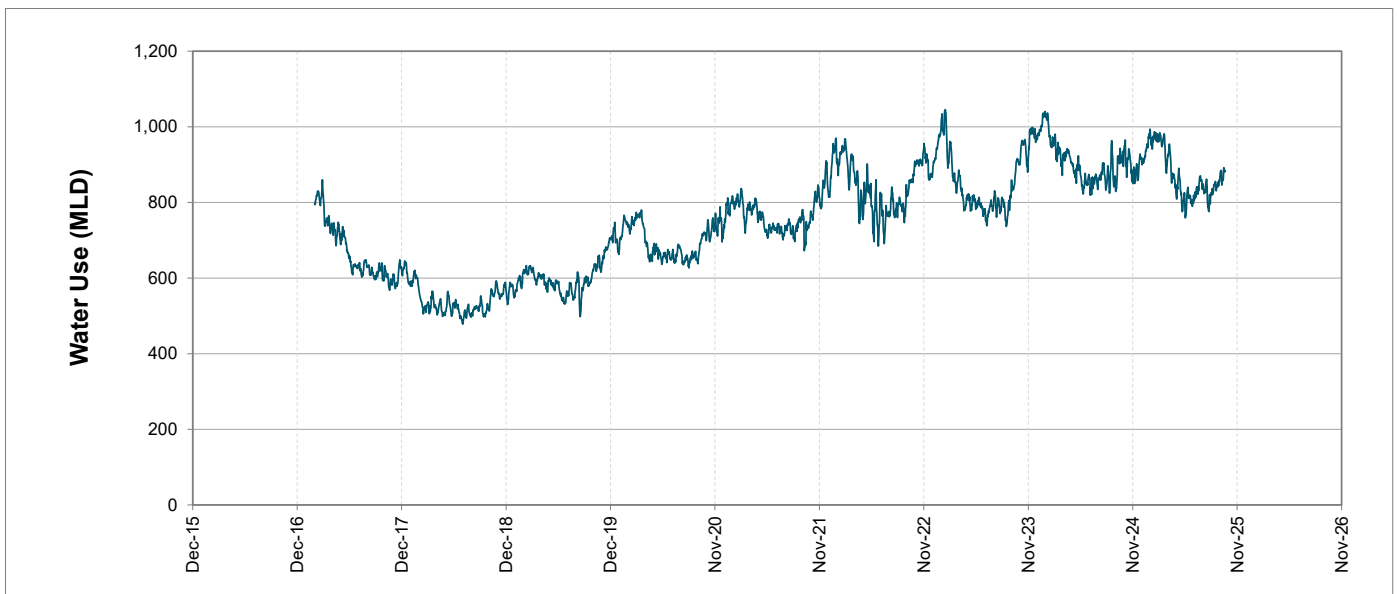
MINOR DAMS
(MLD)

3

GROUND WATER
AND SPRINGS
(MLD)

8

Overall Water Usage Trend (2010 - Present)



WCWSS means Western Cape Water Supply System

MLD means million litres per day

More information on Water Saving and Restrictions is available on the City of Cape Town's 'ThinkWater' website

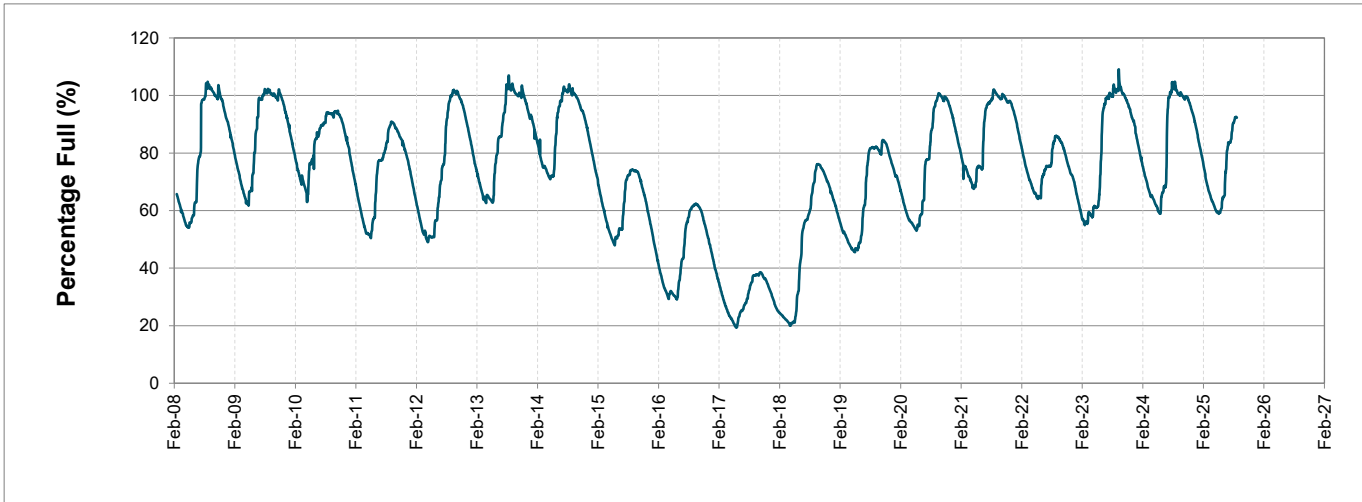
Water Stored in Major Dams (WCWSS)

Overall Percentage Full 89.9%

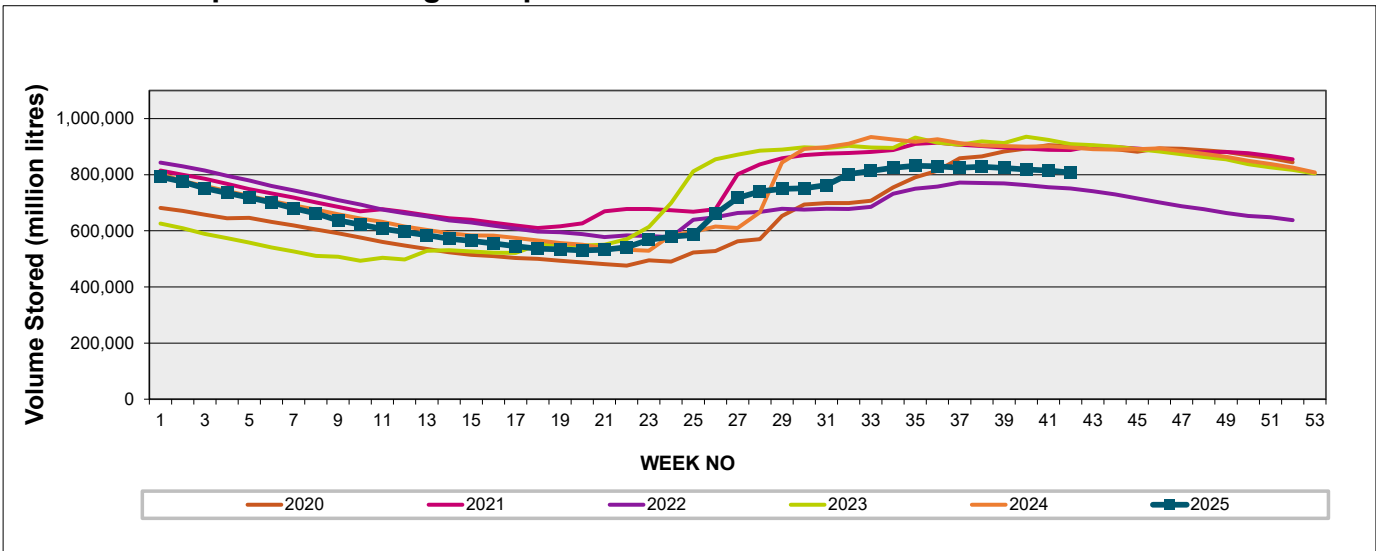
Weekly Change -0.8%

MAJOR DAMS (WCWSS)	STORAGE						
	CAPACITY	%	%	%	%	%	%
	MI	20 October 2025	Previous week	2024	2023	2022	2021
BERG RIVER	130,010	99.8	99.9	99.6	100.0	98.3	100.2
STEENBRAS LOWER	33,517	93.2	94.2	93.1	98.0	88.0	95.4
STEENBRAS UPPER	31,767	99.2	99.8	93.8	101.3	95.6	96.2
THEEWATERSKLOOF	480,188	83.8	84.7	100.0	101.2	81.6	99.9
VOËLVLEI	164,095	99.3	99.9	98.5	99.0	71.0	98.5
WEMMERSHOEK	58,644	85.0	86.5	99.8	99.9	87.8	95.2
TOTAL STORED	898,221	807,582	814,781	890,866	901,842	747,516	889,961
% STORAGE		89.9%	90.7%	99.2%	100.4%	83.2%	99.1%

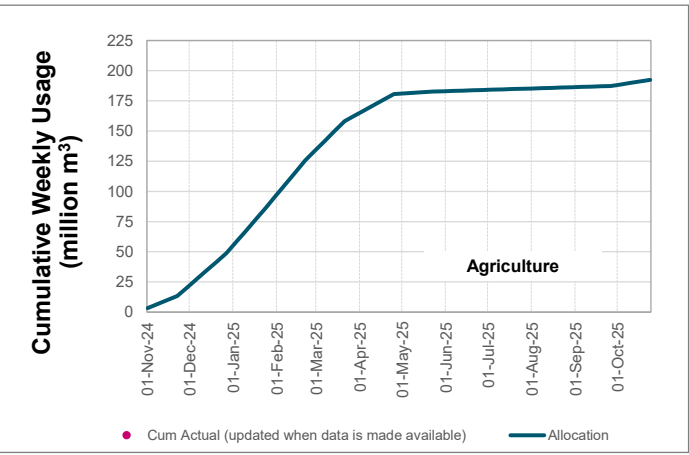
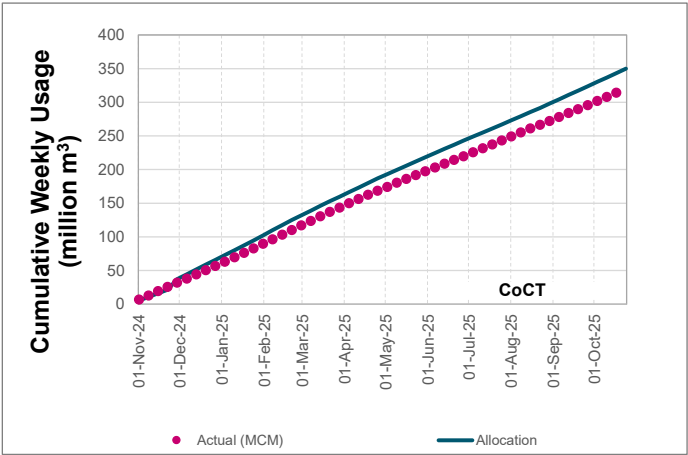
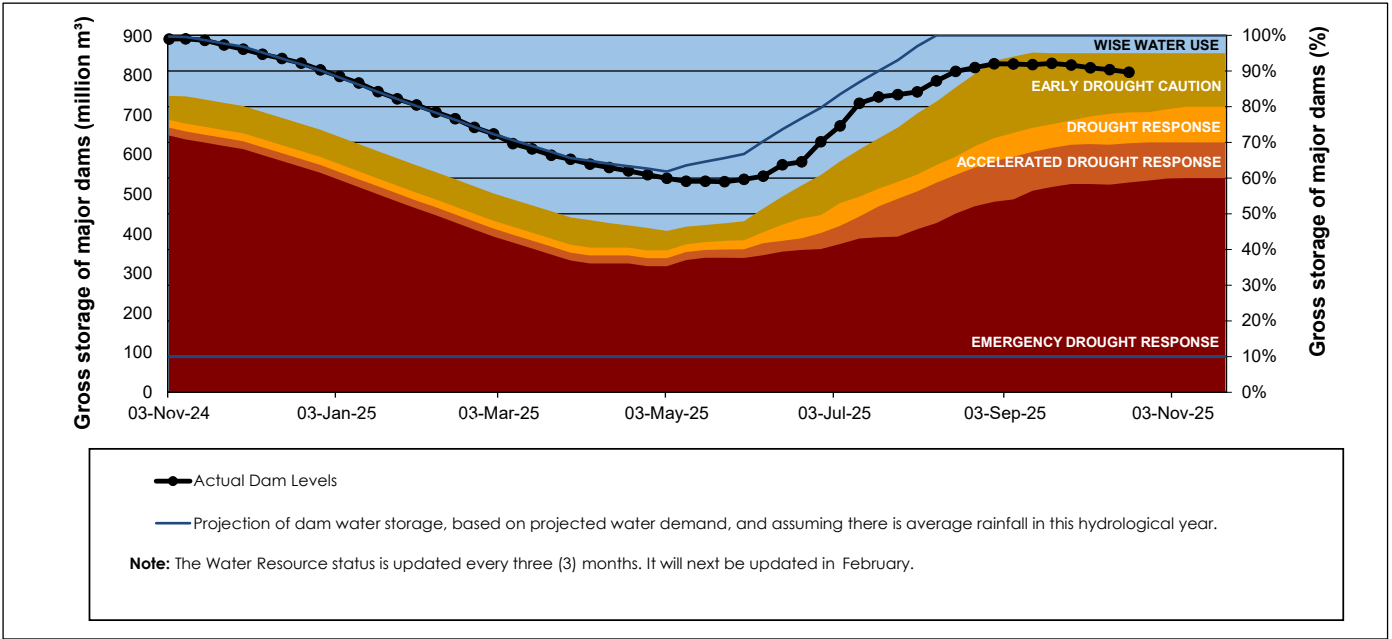
WCWSS Storage Record (2008 - Present)



WCWSS Comparative Storage Graph



Projected WCWSS Dam Storage Levels



Water Stored in Minor Dams

Overall Percentage Full	78.0	Weekly Change	0.00
-------------------------	------	---------------	------

MINOR DAMS	STORAGE						
	CAPACITY	%	%	%	%	%	%
	MI	20 October 2025	Previous week	2024	2023	2022	2021
ALEXANDRA (Table Mountain)	126	60.6	62.1	77.6	83.1	78.7	61.4
DE VILLIERS (Table Mountain)	243	79.3	79.1	98.4	94.6	83.4	79.5
HELY-HUTCHINSON (Table Mount	925	99.3	99.5	98.8	98.6	62.2	99.8
KLEINPLAATS (Simon's Town)	1,368	58.7	59.5	61.9	95.8	70.6	96.9
LAND-EN-ZEEZICHT (Helderberg)	451	100.0	100.0	100.0	99.4	84.3	100.0
LEWIS GAY (Simon's Town)	182	99.0	93.0	91.7	95.4	43.0	89.1
VICTORIA (Table Mountain)	128	67.9	68.5	98.1	99.6	98.1	99.6
WOODHEAD (Table Mountain)	954	76.6	76.1	48.5	73.2	87.6	60.3
Total Stored	4,377	3413.6	3413.5	3278.3	3955.9	3234.2	3784.8
Percentages stored		78.0	78.0	74.9	90.4	73.9	86.5

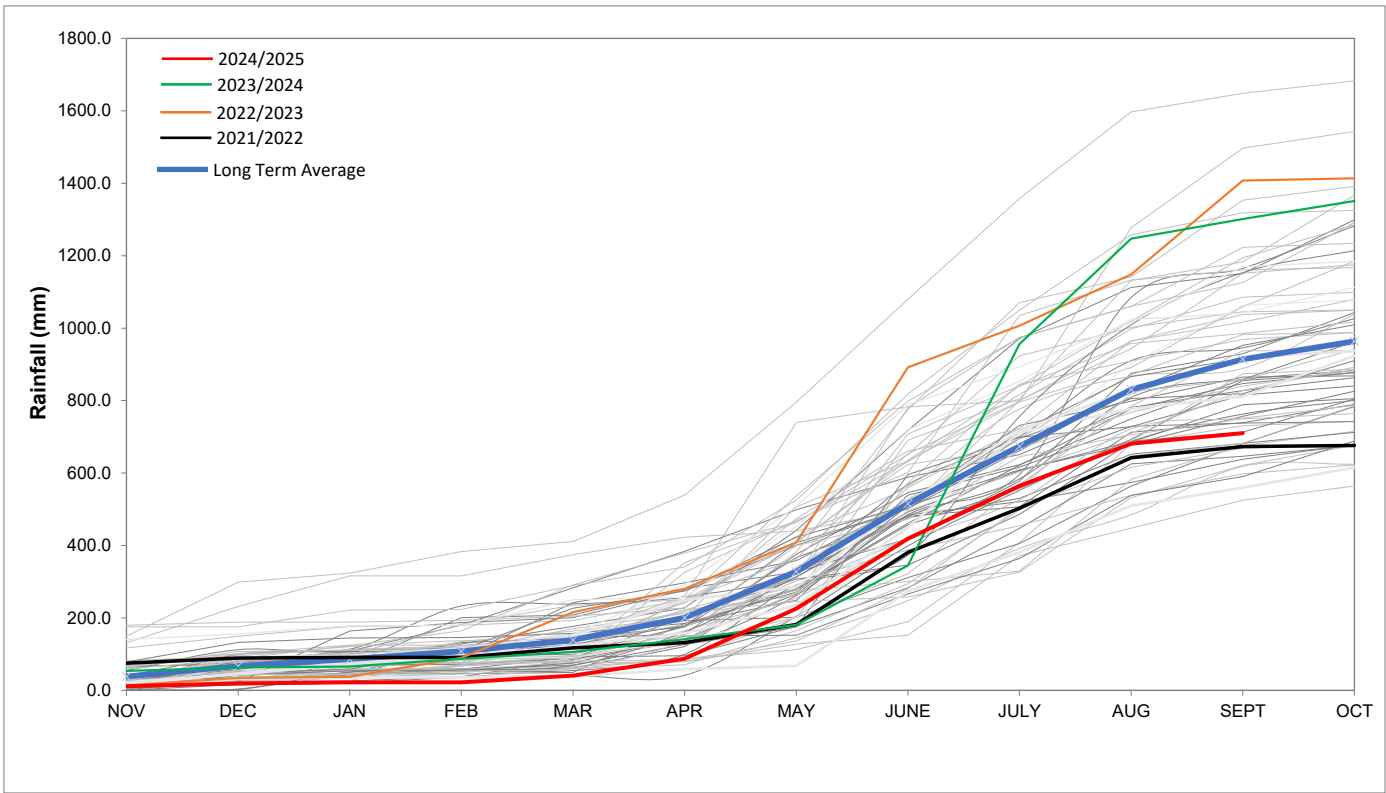
Rainfall Recorded

RAINFALL (mm)	13-Oct	14-Oct	15-Oct	16-Oct	17-Oct	18-Oct	19-Oct	Oct	
								Total*	LT Average
Blackheath Upper	0.0	0.0	0.5	0.0	0.0	0.0	0.0	5.5	26.8
Brooklands	5.0	0.0	0.0	0.0	0.0	0.0	0.0	15.0	47.7
Newlands	0.0	0.0	0.0	0.0	0.0	0.0	0.0	28.2	72.2
Steenbras	6.0	3.5	0.3	0.0	1.5	0.0	0.0	20.5	55.4
Table Mountain (Woodhead)	3.5	0.0	0.0	0.0	0.0	0.0	0.0	30.0	83.7
Theewaterskloof	0.0	0.0	1.4	0.0	0.0	0.0	0.0	1.4	44.1
Tygerberg	0.0	0.0	0.0	0.0	0.0	0.0	0.0	18.1	28.9
Voëlvlei	0.0	0.0	0.0	0.0	0.0	0.0	0.0	3.7	26.7
Wemmershoek	2.7	0.4	0.0	0.0	0.0	0.0	0.0	14.3	43.0
Wynberg	0.2	0.0	0.0	0.0	0.0	0.0	0.0	14.3	51.1

Notes: *Total/cummulative rainfall for month indicated above
LT: Long Term

Accumulated Monthly Rainfall at Wemmershoek

Note: Wemmershoek station used due to long record and mountainous location



Drinking Water Quality

SAMPLE PASS RATE		
Month	Water Quality Compliance (%)	Target (%)
Nov-21	99.11	98
Dec-21	99.09	98
Jan-22	99.04	98
Feb-22	99.04	98
Mar-22	98.99	98
Apr-22	98.96	98
May-22	98.90	98
Jun-22	98.96	98
Jul-22	99.46	99
Aug-22	99.47	99
Sep-22	99.46	99.00
Oct-22	99.47	99.00
Nov-22	99.45	99.00
Dec-22	99.36	99.00
Jan-23	99.36	99.00
Feb-23	99.35	99.00
Mar-23	99.29	99.00
Apr-23	99.24	99.00
May-23	99.24	99.00
Jun-23	99.18	99.00
Jul-23	99.19	99.00
Aug-23	99.14	99.00
Sep-23	99.10	99.00
Oct-23	99.10	99.00
Nov-23	99.04	99.00
Dec-23	99.15	99.00
Jan-24	99.16	99.00
Feb-24	99.12	99.00
Mar-24	99.16	99.00
Apr-24	99.20	99.00
May-24	99.21	99.00
Jun-24	99.26	99.00
Jul-24	99.27	99.00
Aug-24	99.31	99.00
Sep-24	99.33	99.00
Oct-24	99.37	99.00
Nov-24	99.42	99.00
Dec-24	99.42	99.00
Jan-25	99.48	99.00
Feb-25	99.57	99.00
Mar-25	99.61	99.00
Apr-25	99.65	99.00
May-25	99.66	99.00
Jun-25	99.62	99.00
Jul-25	99.69	99.00
Aug-25	99.69	99.00

This table shows CCT drinking water quality compliance according to the South African National Standard 241:2015. Compliance, measured against all prescribed chemical and microbiological components, consistently exceeds the very high CCT target of 99%. (Overall compliance percentages of continuous sampling and analysis are released on a monthly basis.