



Headline Statistics

WCWSS DAM STORAGE
(%)

59.7

WEEKLY DAM LEVEL CHANGE
(%)

-1.00

AVERAGE TOTAL
DAILY WATER USE
(MLD)

841

Water Resource Status

WATER RESOURCE STATUS	MEANING OF CURRENT STATUS
Wise Water Use	<p>Although the water resource status is "wise water use", it is important to continue using water wisely.</p> <p>Note: The Water Resource status is updated every three (3) months. It will next be updated in May.</p>

Water Production from Different Sources

MAJOR DAMS
(MLD)

839

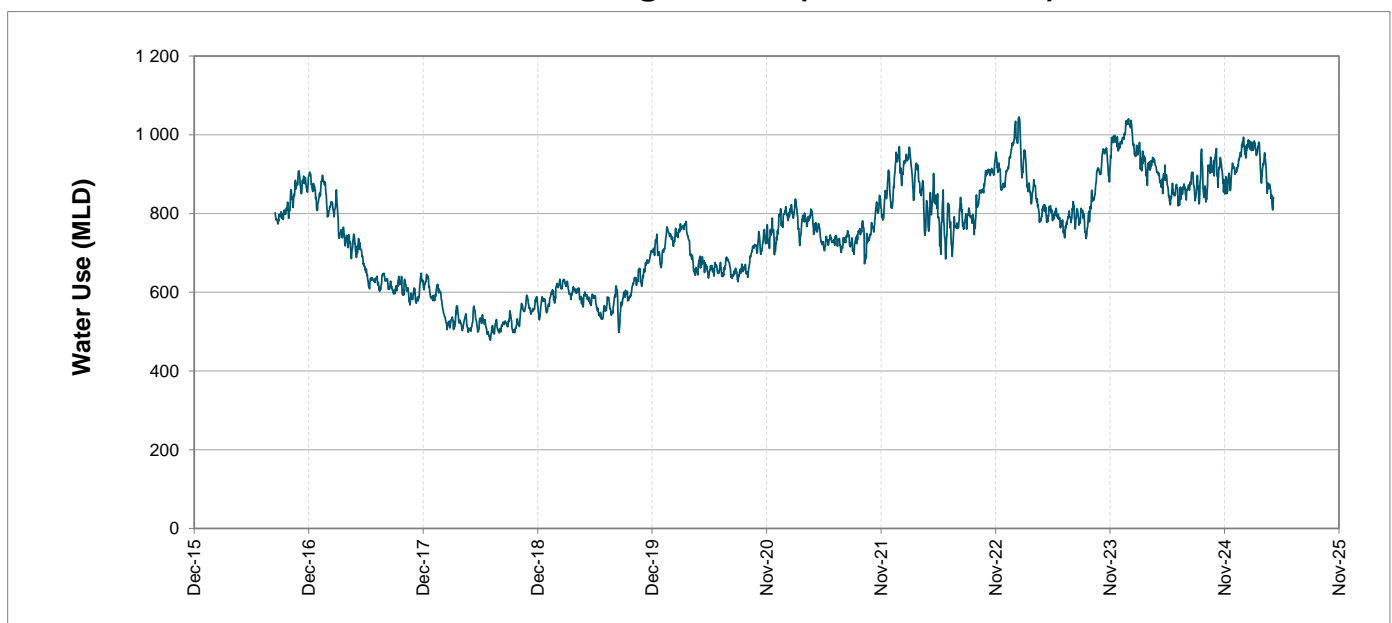
MINOR DAMS
(MLD)

2

GROUND WATER
AND SPRINGS
(MLD)

0

Overall Water Usage Trend (2010 - Present)



WCWSS means Western Cape Water Supply System

MLD means million litres per day

More information on Water Saving and Restrictions is available on the City of Cape Town's 'ThinkWater' website

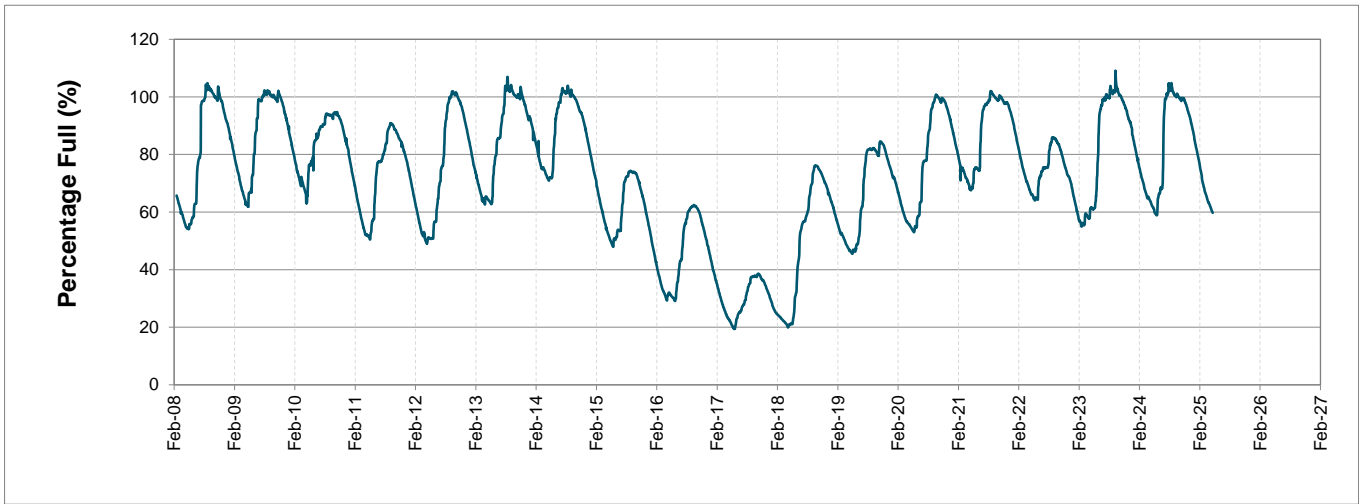
Water Stored in Major Dams (WCWSS)

Overall Percentage Full 59.7%

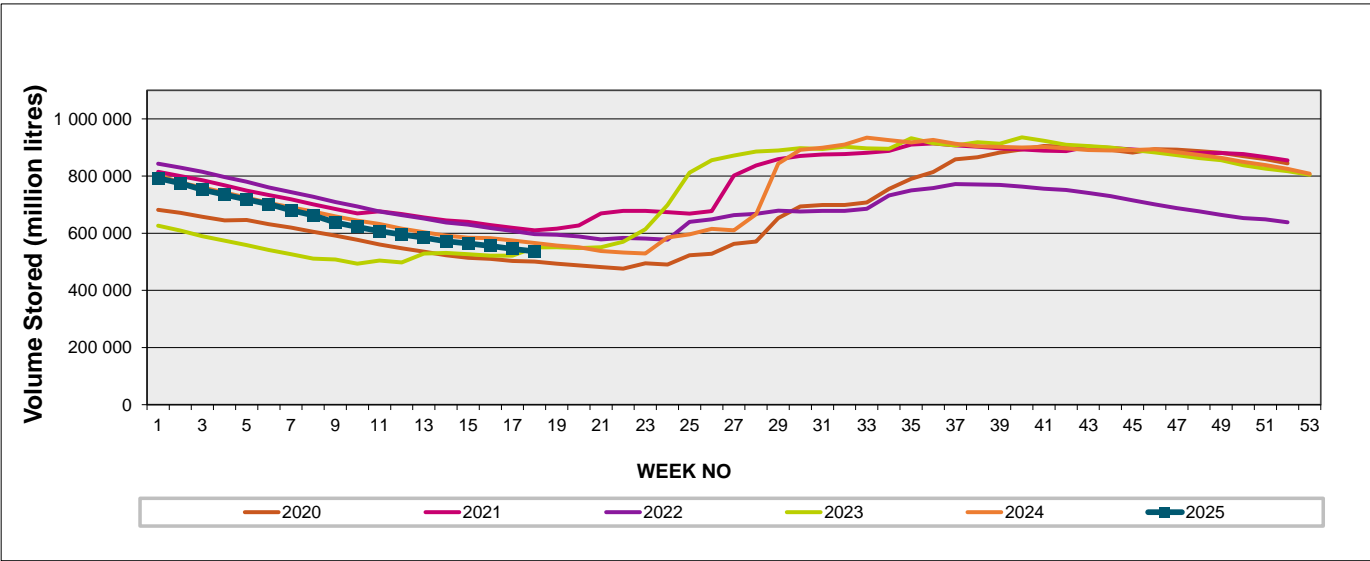
Weekly Change -1.0%

MAJOR DAMS (WCWSS)	STORAGE						
	CAPACITY	%	%	%	%	%	%
	MI	05 May 2025	Previous week	2024	2023	2022	2021
BERG RIVER	130 010	60.9	61.5	71.6	86.5	69.1	70.7
STEENBRAS LOWER	33 517	43.1	44.8	58.2	52.6	63.4	55.0
STEENBRAS UPPER	31 767	91.2	90.9	80.4	93.0	85.9	53.3
THEEWATERSKLOOF	480 188	60.0	61.0	61.6	58.7	68.3	72.2
VOËLVLEI	164 095	58.5	59.7	52.2	40.5	58.9	59.6
WEMMERSHOEK	58 644	50.8	51.9	65.8	73.2	52.6	59.8
TOTAL STORED	898 221	536 506	545 226	557 940	551 028	593 607	606 627
% STORAGE		59.7%	60.7%	62.1%	61.3%	66.1%	67.5%

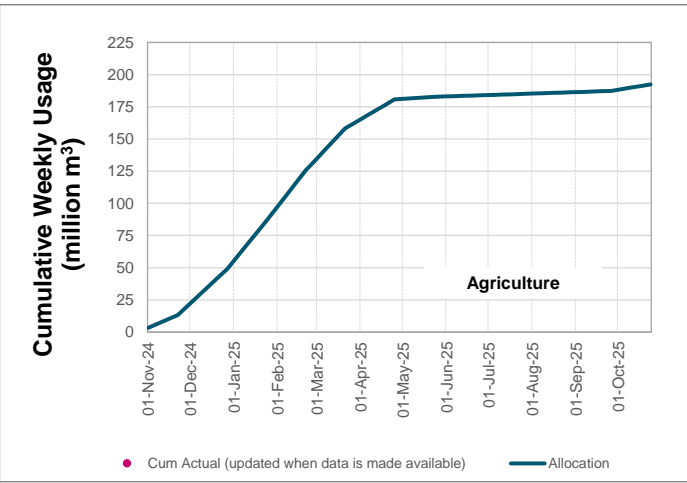
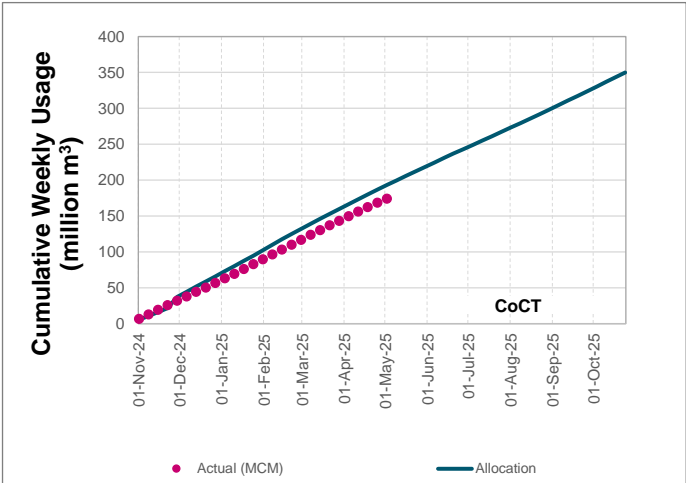
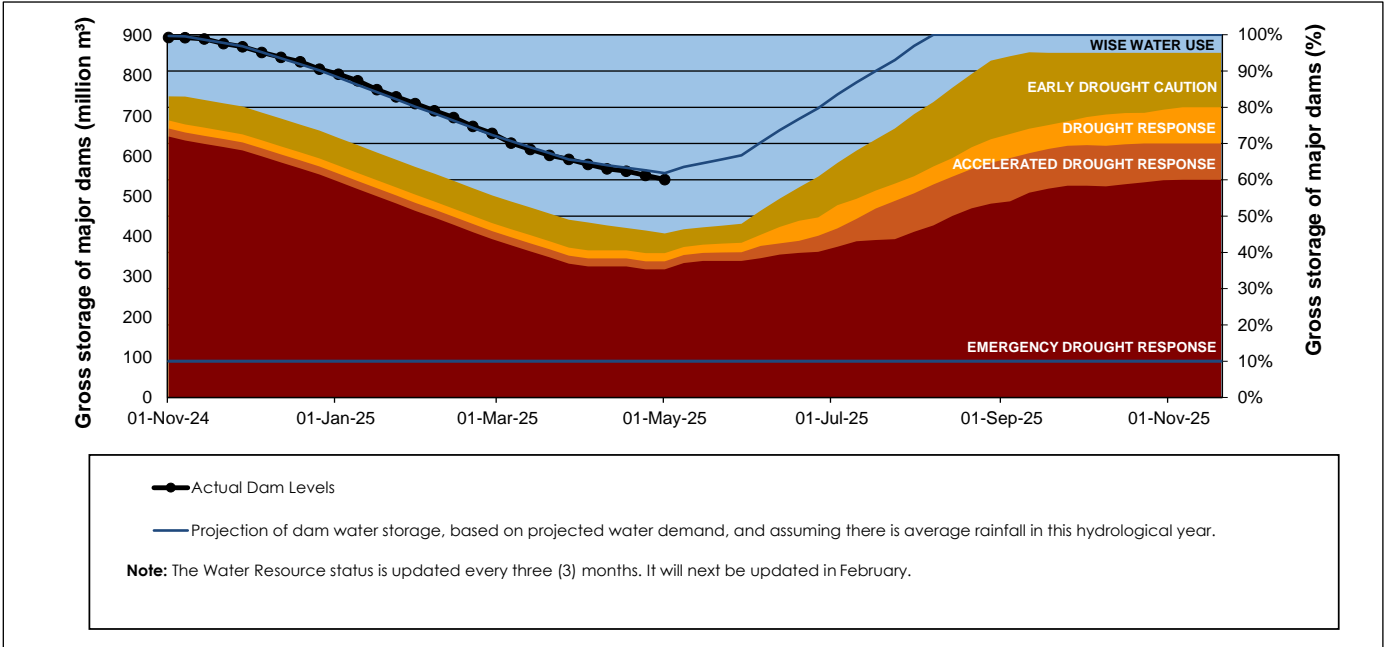
WCWSS Storage Record (2008 - Present)



WCWSS Comparative Storage Graph



Projected WCWSS Dam Storage Levels



Water Stored in Minor Dams

Overall Percentage Full	30.9	Weekly Change	-0.41
-------------------------	------	---------------	-------

MINOR DAMS	STORAGE						
	CAPACITY	%	%	%	%	%	%
	MI	05 May 2025	Previous week	2024	2023	2022	2021
ALEXANDRA (Table Mountain)	126	31.4	30.9	34.2	89.2	54.3	0.0
DE VILLIERS (Table Mountain)	243	38.7	47.4	80.1	99.1	67.5	52.7
HELY-HUTCHINSON (Table Mount)	925	7.7	7.2	0.0	75.7	18.8	0.0
KLEINPLAATS (Simon's Town)	1 368	8.1	8.1	40.6	16.5	48.3	47.4
LAND-EN-ZEEZICHT (Helderberg)	451	71.8	71.8	100.0	86.9	74.9	65.6
LEWIS GAY (Simon's Town)	182	79.0	82.2	44.9	43.6	0.0	35.5
VICTORIA (Table Mountain)	128	75.6	75.9	70.4	99.3	41.8	0.0
WOODHEAD (Table Mountain)	954	49.3	48.9	31.7	74.9	71.7	73.8
Total Stored	4 377	1352.6	1370.6	1709.9	2602.1	2131.4	1819.9
Percentages stored		30.9	31.3	39.1	59.5	48.7	41.6

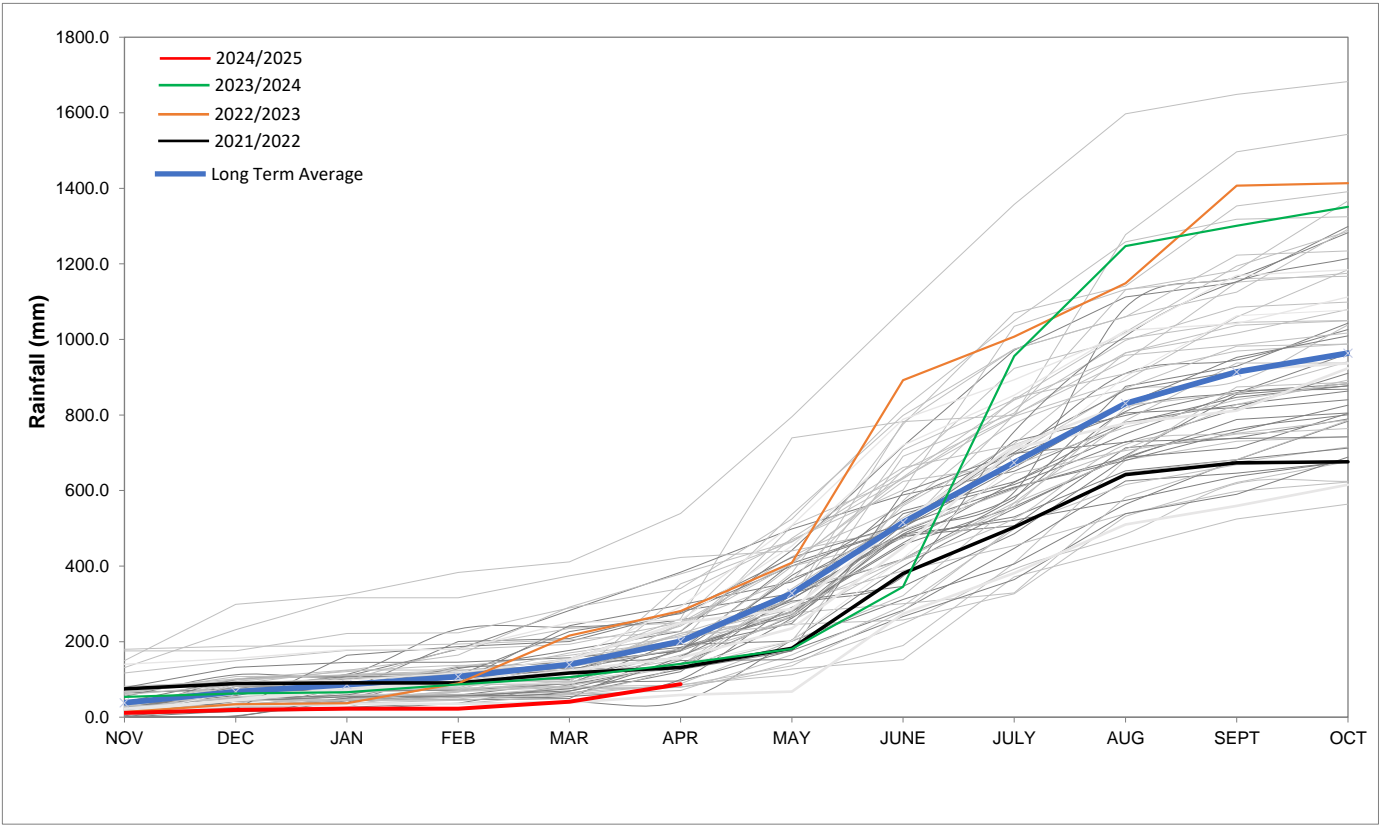
Rainfall Recorded

RAINFALL (mm)	28-Apr	29-Apr	30-Apr	01-May	02-May	03-May	04-May	May	
								Total*	LT Average
Blackheath Upper	0.0	0.0	0.0	3.8	0.0	0.0	0.0	3.8	55.7
Brooklands	0.0	2.0	14.0	4.0	0.0	0.0	0.0	18.0	107.1
Newlands	0.0	0.0	0.0	2.5	0.0	0.0	0.0	2.5	210.0
Steenbras	0.0	0.0	5.0	18.0	0.0	0.0	0.0	23.0	116.9
Table Mountain (Woodhead)	0.0	3.0	1.0	4.5	0.0	0.0	0.0	5.5	188.7
Theewaterskloof	0.0	1.2	0.0	6.3	0.0	0.0	0.0	6.3	48.5
Tygerberg	0.0	0.0	0.0	2.8	0.0	0.0	0.0	2.8	60.0
Voëlvlei	0.0	0.0	0.0	4.5	0.0	0.0	0.0	4.5	69.2
Wemmershoek	0.0	0.0	1.3	8.4	0.0	0.0	0.0	9.7	120.1
Wynberg	0.0	0.0	2.2	1.0	0.0	0.0	0.0	3.2	142.8

Notes: *Total/cummulative rainfall for month indicated above
LT: Long Term

Accumulated Monthly Rainfall at Wemmershoek

Note: Wemmershoek station used due to long record and mountainous location



Drinking Water Quality

SAMPLE PASS RATE		
Month	Water Quality Compliance (%)	Target (%)
Nov-21	99.11	98
Dec-21	99.09	98
Jan-22	99.04	98
Feb-22	99.04	98
Mar-22	98.99	98
Apr-22	98.96	98
May-22	98.90	98
Jun-22	98.96	98
Jul-22	99.46	99
Aug-22	99.47	99
Sep-22	99.46	99.00
Oct-22	99.47	99.00
Nov-22	99.45	99.00
Dec-22	99.36	99.00
Jan-23	99.36	99.00
Feb-23	99.35	99.00
Mar-23	99.29	99.00
Apr-23	99.24	99.00
May-23	99.24	99.00
Jun-23	99.18	99.00
Jul-23	99.19	99.00
Aug-23	99.14	99.00
Sep-23	99.10	99.00
Oct-23	99.10	99.00
Nov-23	99.04	99.00
Dec-23	99.15	99.00
Jan-24	99.16	99.00
Feb-24	99.12	99.00
Mar-24	99.16	99.00
Apr-24	99.20	99.00
May-24	99.21	99.00
Jun-24	99.26	99.00
Jul-24	99.27	99.00
Aug-24	99.31	99.00
Sep-24	99.33	99.00
Oct-24	99.37	99.00
Nov-24	99.42	99.00
Dec-24	99.42	99.00
Jan-25	99.48	99.00
Feb-25	99.57	99.00

This table shows CCT drinking water quality compliance according to the South African National Standard 241:2015. Compliance, measured against all prescribed chemical and microbiological components, consistently exceeds the very high CCT target of 99%. (Overall compliance percentages of continuous sampling and analysis are released on a monthly basis.