



Headline Statistics

WCWSS DAM STORAGE
(%)

61.8

WEEKLY DAM LEVEL CHANGE
(%)

-0.90

AVERAGE TOTAL
DAILY WATER USE
(MLD)

875

Water Resource Status

WATER RESOURCE STATUS	MEANING OF CURRENT STATUS
Wise Water Use	<p>Although the water resource status is "wise water use", it is important to continue using water wisely.</p> <p>Note: The Water Resource status is updated every three (3) months. It will next be updated in May.</p>

Water Production from Different Sources

MAJOR DAMS
(MLD)

865

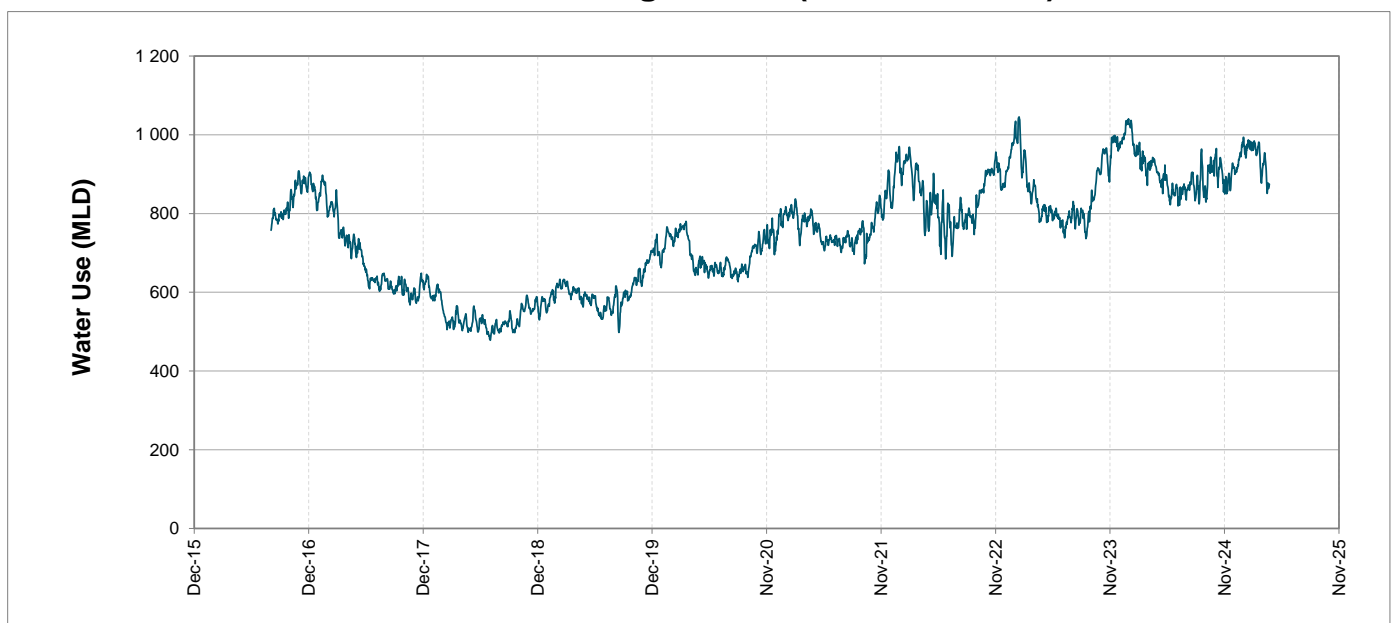
MINOR DAMS
(MLD)

2

GROUND WATER
AND SPRINGS
(MLD)

8

Overall Water Usage Trend (2010 - Present)



WCWSS means Western Cape Water Supply System

MLD means million litres per day

More information on Water Saving and Restrictions is available on the City of Cape Town's 'ThinkWater' website

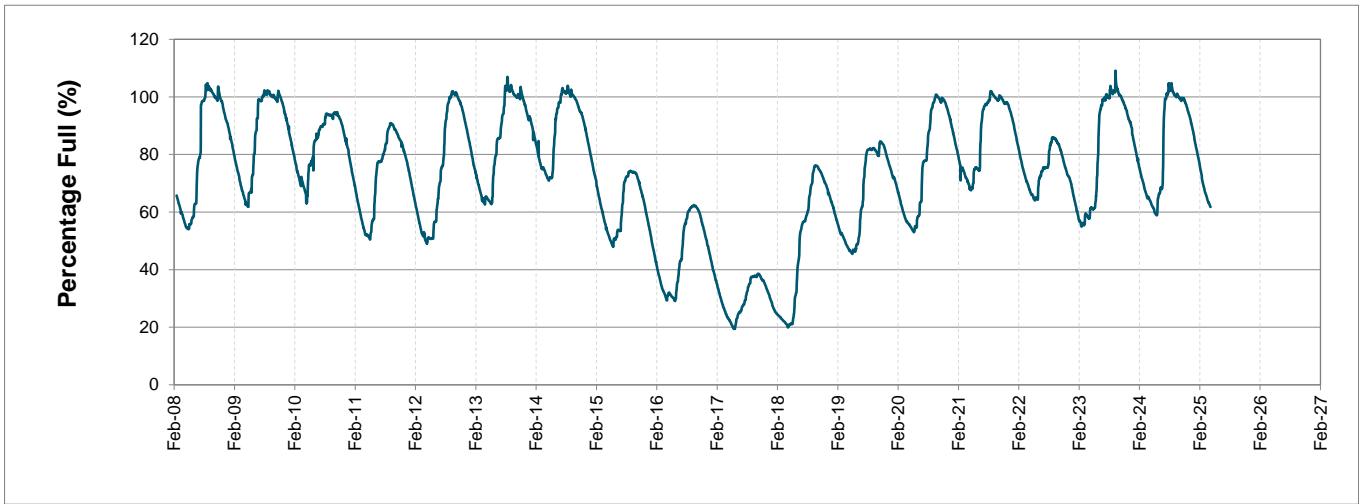
Water Stored in Major Dams (WCWSS)

Overall Percentage Full 61.8%

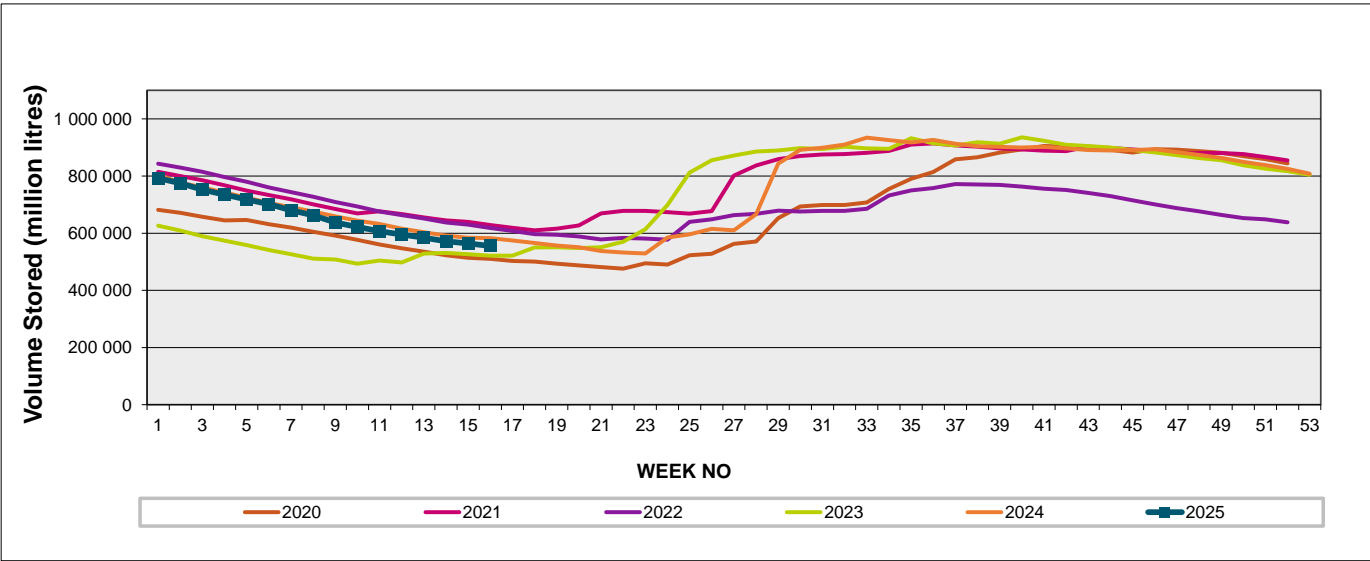
Weekly Change -0.9%

MAJOR DAMS (WCWSS)	STORAGE						
	CAPACITY	%	%	%	%	%	%
	MI	22 April 2025	Previous week	2024	2023	2022	2021
BERG RIVER	130 010	62.9	63.1	73.4	78.2	70.8	71.7
STEENBRAS LOWER	33 517	46.6	47.9	60.2	52.8	65.7	57.5
STEENBRAS UPPER	31 767	92.7	92.2	80.3	91.8	86.1	53.4
THEEWATERSKLOOF	480 188	62.1	63.2	63.4	55.8	70.2	74.4
VOËLVLEI	164 095	60.5	61.7	54.3	38.4	61.0	61.5
WEMMERSHOEK	58 644	52.5	53.5	67.7	69.6	55.5	63.5
TOTAL STORED	898 221	554 847	563 548	574 640	520 106	611 018	624 688
% STORAGE		61.8%	62.7%	64.0%	57.9%	68.0%	69.5%

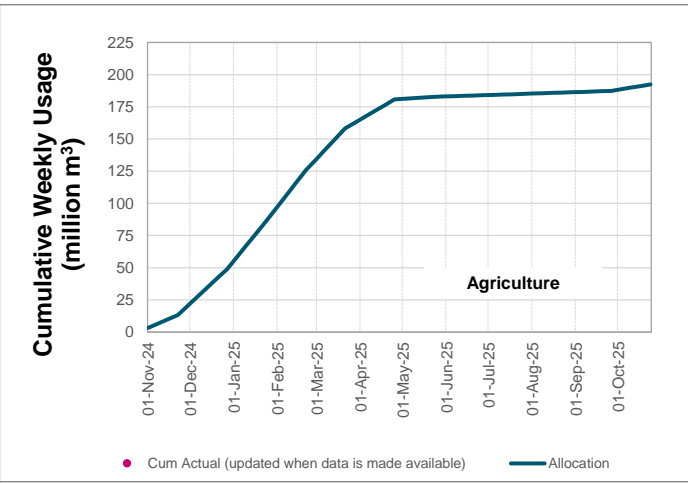
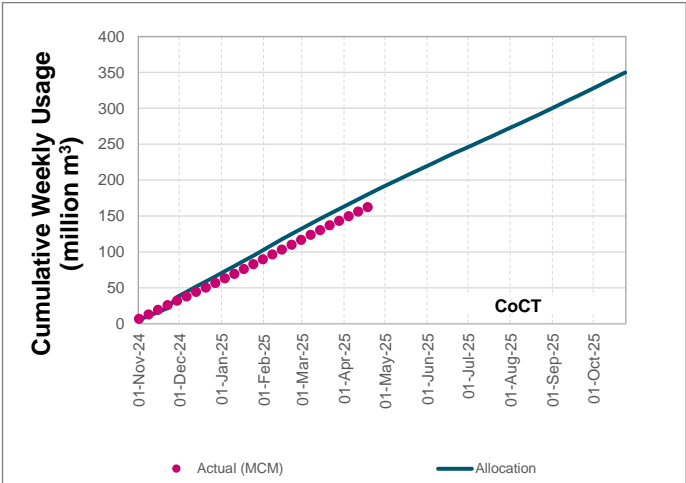
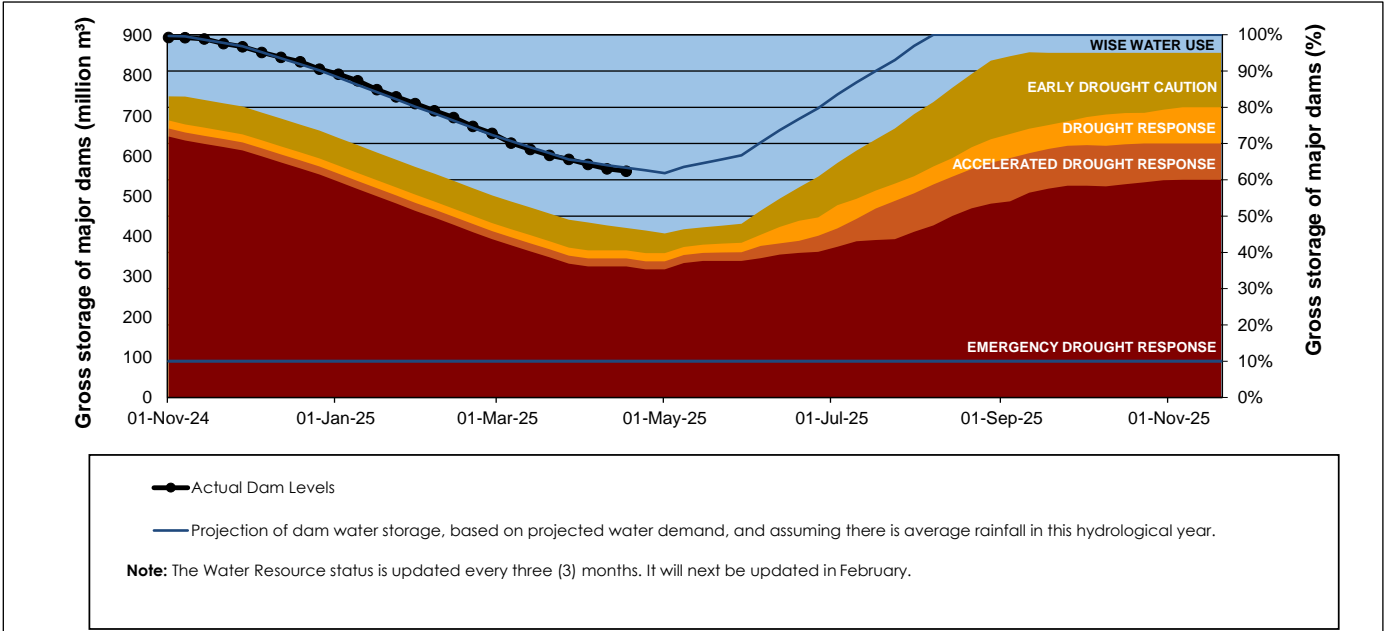
WCWSS Storage Record (2008 - Present)



WCWSS Comparative Storage Graph



Projected WCWSS Dam Storage Levels



Water Stored in Minor Dams

Overall Percentage Full	32.2	Weekly Change	-0.84
-------------------------	------	---------------	-------

MINOR DAMS	STORAGE						
	CAPACITY	%	%	%	%	%	%
	MI	22 April 2025	Previous week	2024	2023	2022	2021
ALEXANDRA (Table Mountain)	126	31.2	32.3	35.8	54.6	55.8	0.0
DE VILLIERS (Table Mountain)	243	61.0	69.8	83.2	99.5	67.6	53.2
HELY-HUTCHINSON (Table Mount)	925	6.3	6.8	0.0	31.6	19.5	1.8
KLEINPLAATS (Simon's Town)	1 368	8.4	8.4	42.1	19.4	53.5	50.3
LAND-EN-ZEEZICHT (Helderberg)	451	71.8	72.1	98.8	86.4	76.9	68.8
LEWIS GAY (Simon's Town)	182	88.6	90.9	54.2	38.4	0.0	38.6
VICTORIA (Table Mountain)	128	76.9	78.2	71.1	100.0	49.9	0.0
WOODHEAD (Table Mountain)	954	48.9	49.0	42.5	70.8	71.9	76.9
Total Stored	4 377	1411.3	1447.9	1853.0	2136.0	2228.4	1924.6
Percentages stored		32.2	33.1	42.3	48.8	50.9	44.0

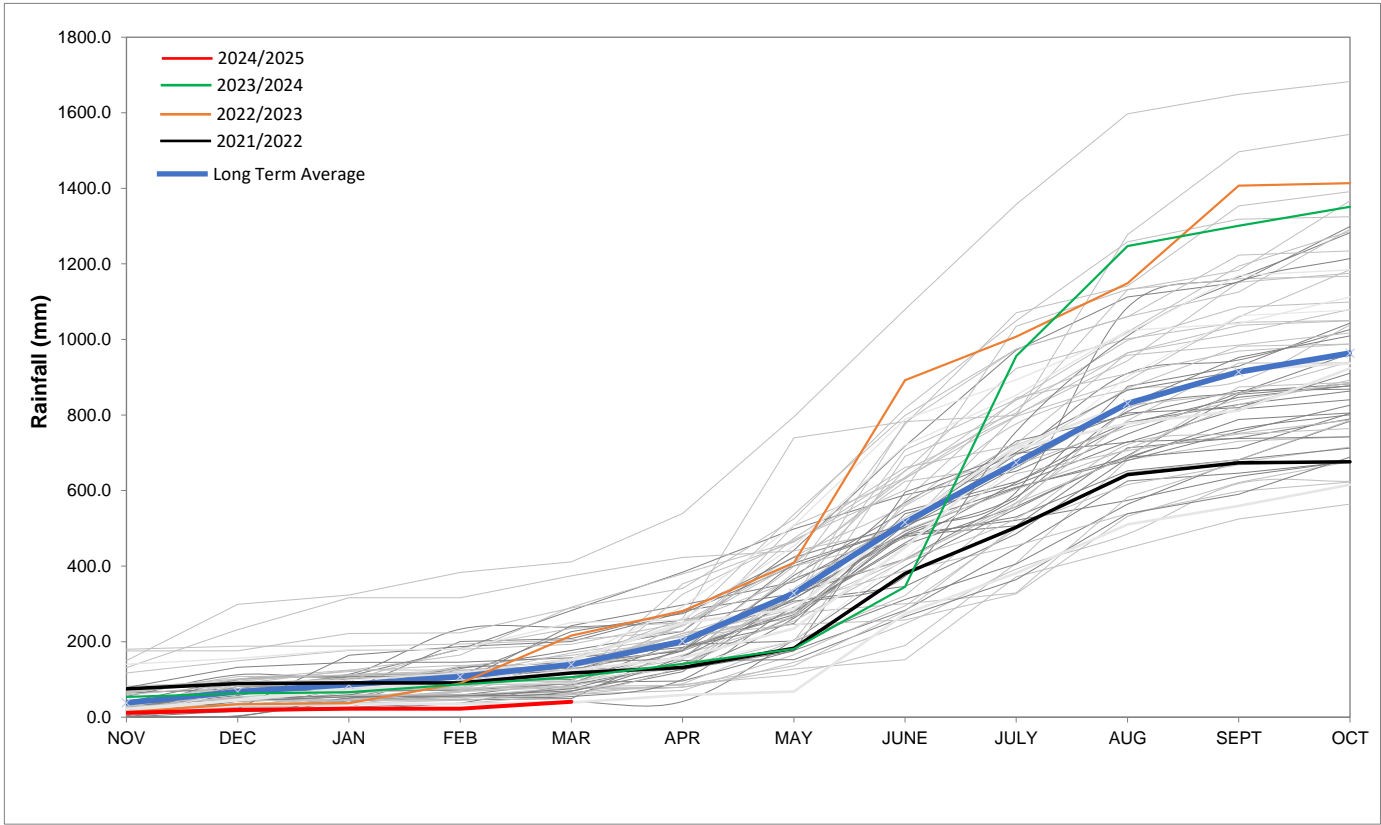
Rainfall Recorded

RAINFALL (mm)	15-Apr	16-Apr	17-Apr	18-Apr	19-Apr	20-Apr	21-Apr	Apr	
								Total*	LT Average
Blackheath Upper	0.0	0.0	0.0	0.0	0.0	0.0	0.0	48.8	36.1
Brooklands	0.0	0.0	0.0	0.0	0.0	0.0	0.0	40.0	61.9
Newlands	0.0	0.0	0.0	0.0	0.0	0.0	0.0	56.5	109.5
Steenbras	0.0	0.0	0.0	0.0	0.0	0.0	0.0	21.0	81.3
Table Mountain (Woodhead)	0.0	0.0	0.0	0.0	0.0	0.0	0.0	58.5	125.0
Theewaterskloof	0.0	0.0	0.0	0.0	0.0	19.0	0.0	42.5	53.3
Tygerberg	0.0	0.0	0.0	0.0	0.0	0.0	0.0	30.6	35.7
Voëlvlei	0.0	0.0	0.0	0.0	0.0	0.0	0.0	83.8	40.2
Wemmershoek	0.0	0.0	0.0	0.0	0.0	0.0	0.0	45.4	67.8
Wynberg	0.0	0.0	0.0	0.0	0.0	0.0	0.0	58.0	62.9

Notes: *Total/cummulative rainfall for month indicated above
LT: Long Term

Accumulated Monthly Rainfall at Wemmershoek

Note: Wemmershoek station used due to long record and mountainous location



Drinking Water Quality

SAMPLE PASS RATE		
Month	Water Quality Compliance (%)	Target (%)
Nov-21	99.11	98
Dec-21	99.09	98
Jan-22	99.04	98
Feb-22	99.04	98
Mar-22	98.99	98
Apr-22	98.96	98
May-22	98.90	98
Jun-22	98.96	98
Jul-22	99.46	99
Aug-22	99.47	99
Sep-22	99.46	99.00
Oct-22	99.47	99.00
Nov-22	99.45	99.00
Dec-22	99.36	99.00
Jan-23	99.36	99.00
Feb-23	99.35	99.00
Mar-23	99.29	99.00
Apr-23	99.24	99.00
May-23	99.24	99.00
Jun-23	99.18	99.00
Jul-23	99.19	99.00
Aug-23	99.14	99.00
Sep-23	99.10	99.00
Oct-23	99.10	99.00
Nov-23	99.04	99.00
Dec-23	99.15	99.00
Jan-24	99.16	99.00
Feb-24	99.12	99.00
Mar-24	99.16	99.00
Apr-24	99.20	99.00
May-24	99.21	99.00
Jun-24	99.26	99.00
Jul-24	99.27	99.00
Aug-24	99.31	99.00
Sep-24	99.33	99.00
Oct-24	99.37	99.00
Nov-24	99.42	99.00
Dec-24	99.42	99.00
Jan-25	99.48	99.00
Feb-25	99.57	99.00

This table shows CCT drinking water quality compliance according to the South African National Standard 241:2015. Compliance, measured against all prescribed chemical and microbiological components, consistently exceeds the very high CCT target of 99%. (Overall compliance percentages of continuous sampling and analysis are released on a monthly basis.