



Headline Statistics

WCWSS DAM STORAGE (%)

**99.2**

WEEKLY DAM LEVEL CHANGE (%)

**-0.60**

AVERAGE TOTAL DAILY WATER USE (MLD)

**875**

Water Resource Status

WATER RESOURCE STATUS	MEANING OF CURRENT STATUS
Wise Water Use	<p>Although early winter rains have been above average, the City will continue to monitor these levels. It is important to continue using water wisely.</p> <p><b>Note:</b> The Water Resource status is updated every three (3) months. It will next be updated in November.</p>

Water Production from Different Sources

MAJOR DAMS (MLD)

**871**

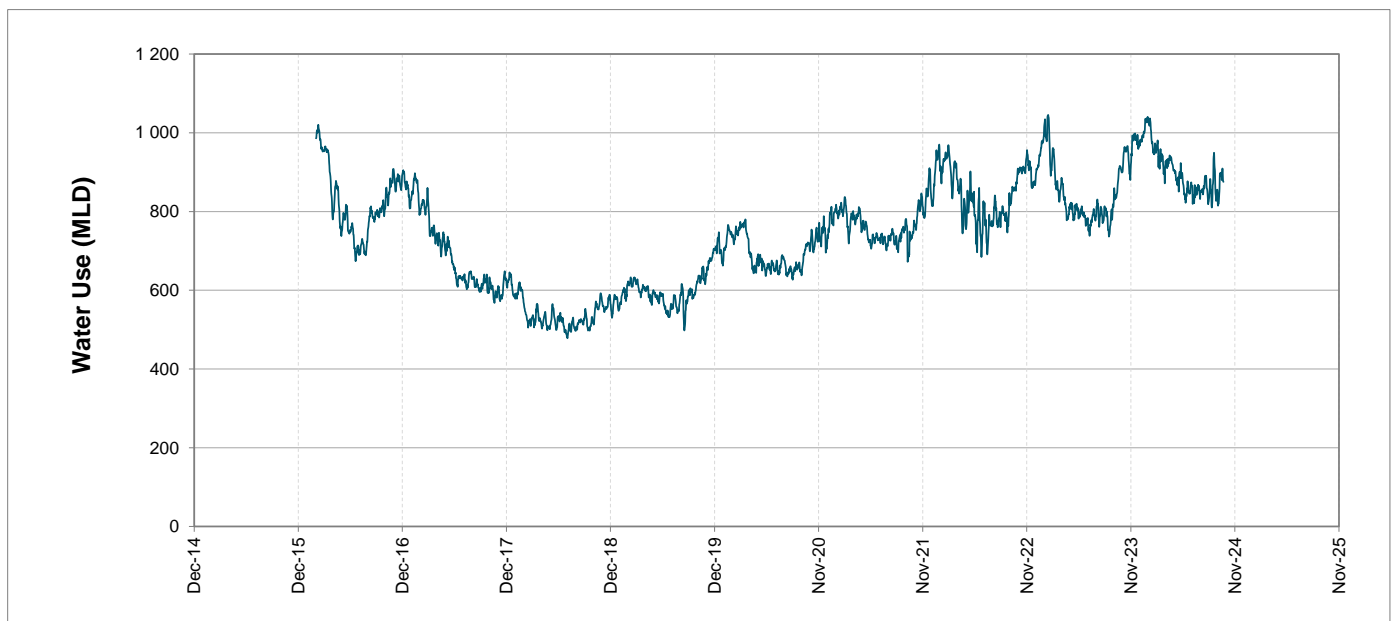
MINOR DAMS (MLD)

**4**

GROUND WATER AND SPRINGS (MLD)

**0**

Overall Water Usage Trend (2010 - Present)



WCWSS means Western Cape Water Supply System

MLD means million litres per day

More information on Water Saving and Restrictions is available on the City of Cape Town's 'ThinkWater' website

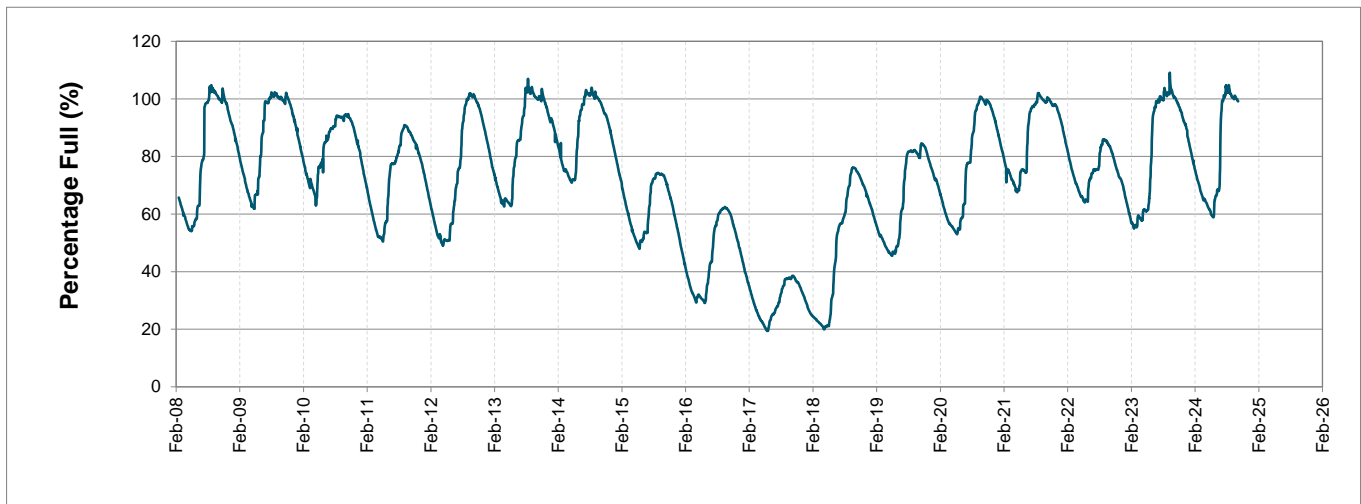
# Water Stored in Major Dams (WCWSS)

Overall Percentage Full **99.2%**

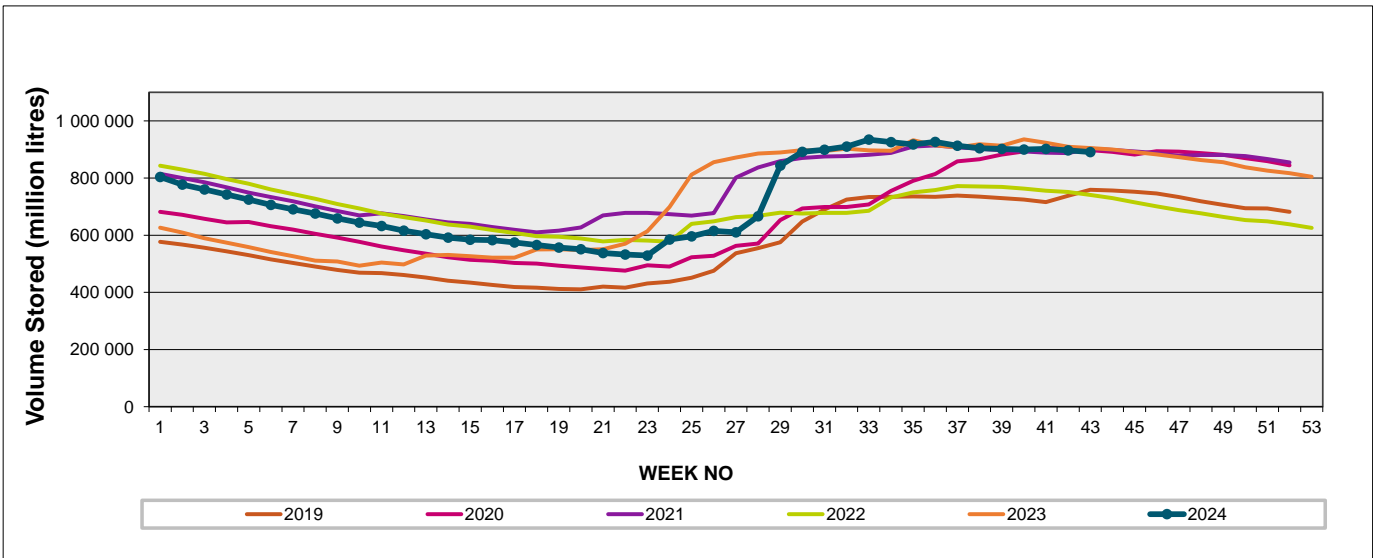
Weekly Change **-0.6%**

MAJOR DAMS (WCWSS)	STORAGE						
	CAPACITY	%	%	%	%	%	%
	MI	21 October 2024	Previous week	2023	2022	2021	2020
BERG RIVER	130 010	99.6	99.9	100.0	98.2	100.2	100.0
STEENBRAS LOWER	33 517	93.9	95.1	99.2	87.8	95.2	97.8
STEENBRAS UPPER	31 767	95.4	97.8	102.1	94.8	96.8	95.0
THEEWATERSKLOOF	480 188	99.9	100.5	101.4	81.1	99.9	101.1
VOËLVLEI	164 095	98.3	99.1	98.9	70.7	98.4	97.5
WEMMERSHOEK	58 644	99.7	100.0	99.9	87.6	95.0	97.8
<b>TOTAL STORED</b>	<b>898 221</b>	<b>890 690</b>	<b>896 754</b>	<b>903 372</b>	<b>744 208</b>	<b>889 799</b>	<b>895 713</b>
<b>% STORAGE</b>		<b>99.2%</b>	<b>99.8%</b>	<b>100.6%</b>	<b>82.9%</b>	<b>99.1%</b>	<b>99.7%</b>

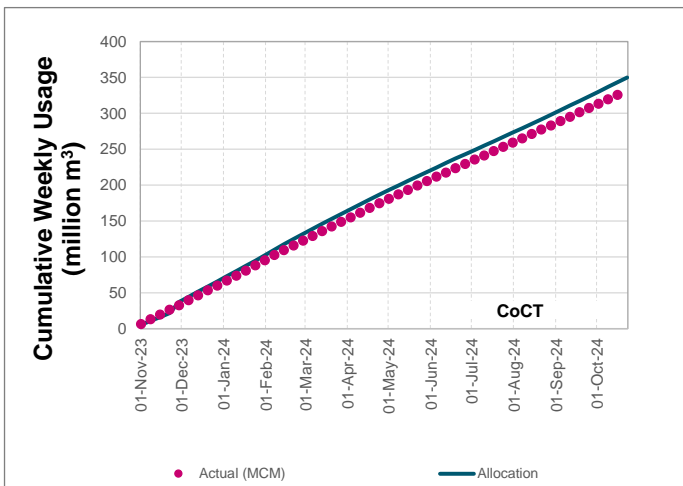
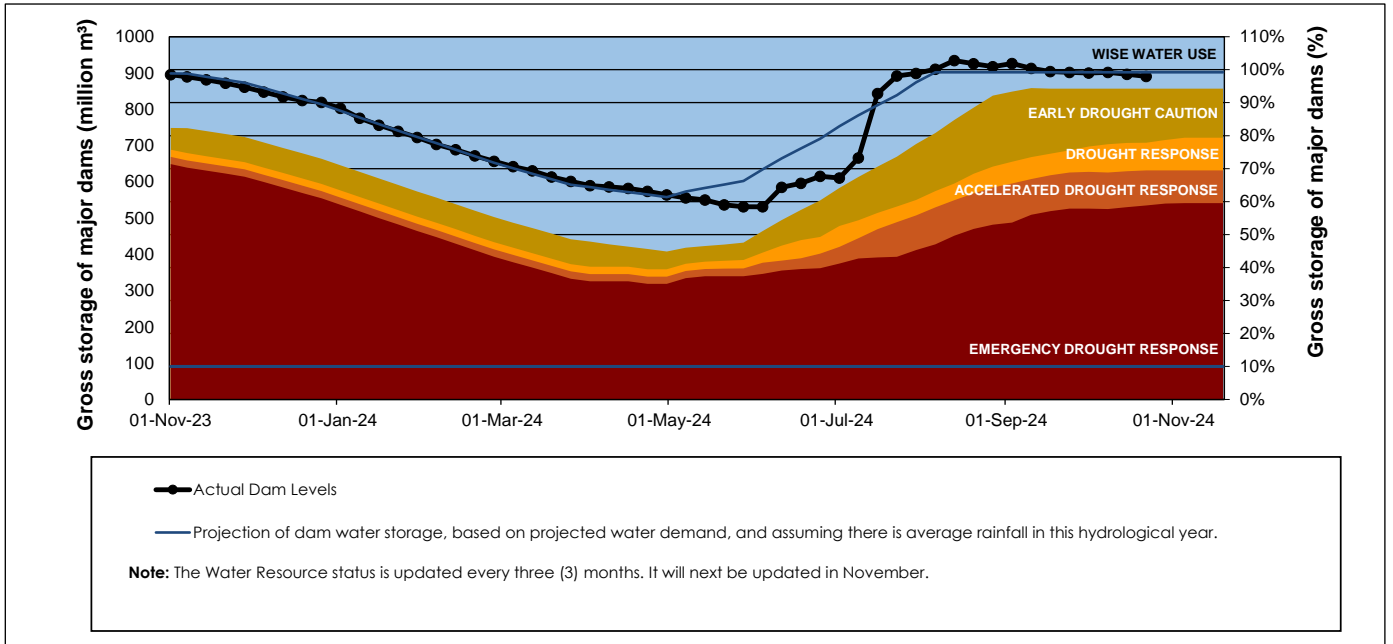
## WCWSS Storage Record (2008 - Present)



## WCWSS Comparative Storage Graph



# Projected WCWSS Dam Storage Levels



## Water Stored in Minor Dams

Overall Percentage Full **74.8**

Weekly Change **-2.71**

MINOR DAMS	STORAGE						
	CAPACITY	%	%	%	%	%	%
	MI	21 October 2024	Previous week	2023	2022	2021	2020
ALEXANDRA (Table Mountain)	126	77.6	80.8	82.5	78.1	61.4	85.2
DE VILLIERS (Table Mountain)	243	98.4	100.2	94.6	83.4	78.9	100.0
HELY-HUTCHINSON (Table Mount)	925	98.8	99.3	98.6	62.0	99.8	99.5
KLEINPLAATS (Simon's Town)	1 368	61.9	61.9	100.2	70.6	96.9	98.9
LAND-EN-ZEEZICHT (Helderberg)	451	99.4	99.4	99.4	84.2	100.0	95.9
LEWIS GAY (Simon's Town)	182	91.2	95.0	100.9	43.3	90.0	95.4
VICTORIA (Table Mountain)	128	98.1	99.6	99.6	97.7	100.0	100.0
WOODHEAD (Table Mountain)	954	48.5	58.7	70.6	85.9	59.8	80.2
<b>Total Stored</b>	<b>4 377</b>	<b>3274.4</b>	<b>3392.9</b>	<b>3997.2</b>	<b>3215.0</b>	<b>3780.7</b>	<b>4071.3</b>
<b>Percentages stored</b>		<b>74.8</b>	<b>77.5</b>	<b>91.3</b>	<b>73.5</b>	<b>86.4</b>	<b>93.0</b>

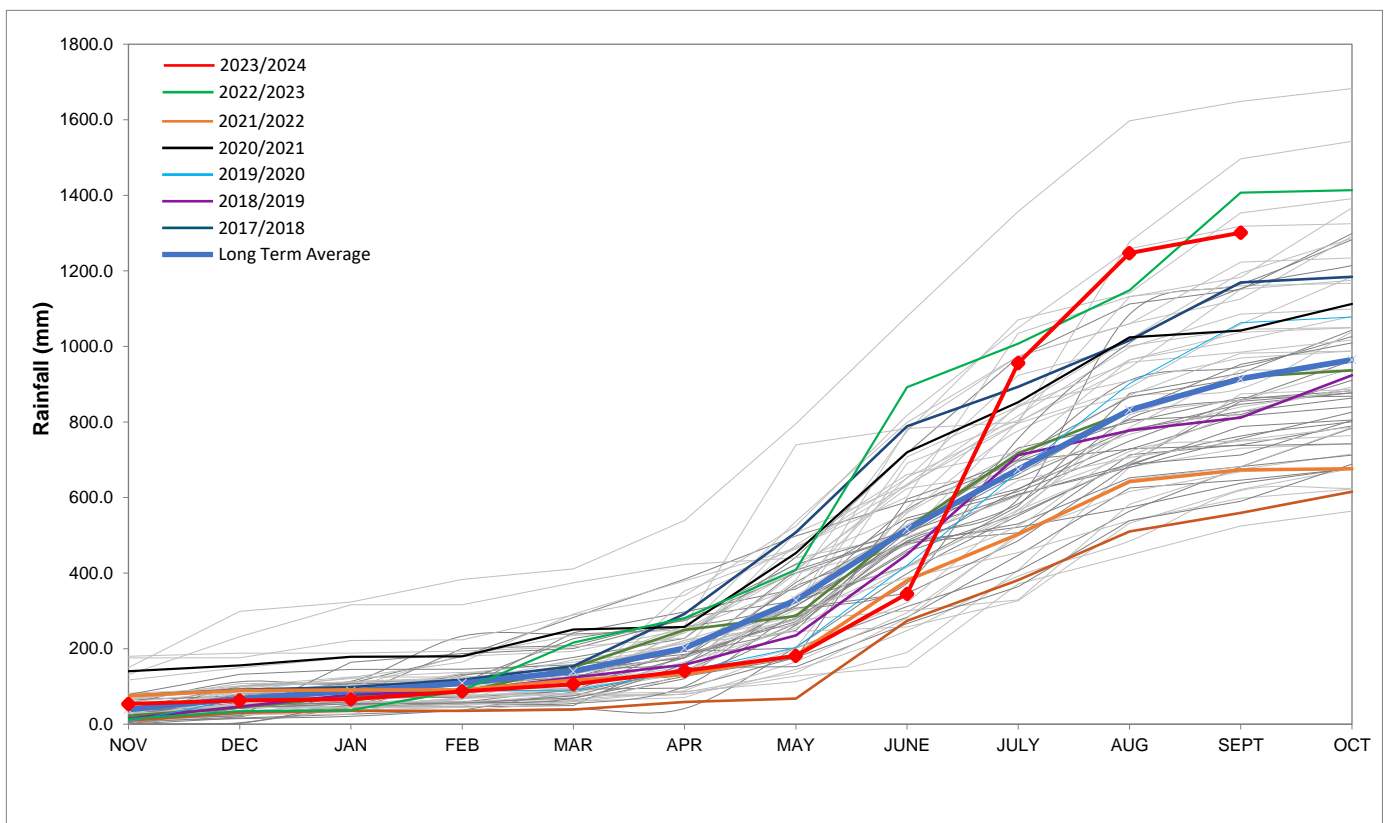
## Rainfall Recorded

RAINFALL (mm)	14-Oct	15-Oct	16-Oct	17-Oct	18-Oct	19-Oct	20-Oct	Oct	
								Total*	LT Average
Blackheath Upper	0.0	0.0	0.0	0.0	0.0	0.0	0.0	8.5	26.8
Brooklands	0.0	0.0	0.0	0.0	0.0	0.0	0.0	0.0	47.7
Newlands	0.0	0.0	0.0	0.0	0.0	0.0	0.0	9.5	72.2
Steenbras	0.0	0.0	0.0	0.5	0.0	0.0	0.0	22.0	55.4
Table Mountain (Woodhead)	0.0	0.0	0.0	1.0	0.0	0.0	0.0	1.0	83.7
Theewaterskloof	0.0	0.0	0.0	0.0	2.5	0.0	0.0	9.9	44.1
Tygerberg	0.0	0.0	0.0	0.0	0.0	0.0	0.0	5.3	28.9
Voëlvlei	0.0	0.0	0.0	0.0	0.0	0.0	0.0	10.0	26.7
Wemmershoek	0.0	0.0	0.0	0.0	0.0	0.0	0.0	13.6	43.0
Wynberg	0.0	0.0	0.0	0.0	0.0	0.0	0.0	0.0	51.1

Notes: \*Total/cummulative rainfall for month indicated above  
LT: Long Term

## Accumulated Monthly Rainfall at Wemmershoek

Note: Wemmershoek station used due to long record and mountainous location



## Drinking Water Quality

Month	SAMPLE PASS RATE	
	Water Quality Compliance (%)	Target (%)
Nov-21	99.11	98
Dec-21	99.09	98
Jan-22	99.04	98
Feb-22	99.04	98
Mar-22	98.99	98
Apr-22	98.96	98
May-22	98.90	98
Jun-22	98.96	98
Jul-22	99.46	99
Aug-22	99.47	99
Sep-22	99.46	98.50
Oct-22	99.47	98.50
Nov-22	99.45	98.50
Dec-22	99.36	98.50
Jan-23	99.36	98.50
Feb-23	99.35	98.50
Mar-23	99.29	98.50
Apr-23	99.24	98.50
May-23	99.24	98.50
Jun-23	99.18	98.50
Jul-23	99.19	98.50
Aug-23	99.14	98.50
Sep-23	99.10	98.50
Oct-23	99.10	98.50
Nov-23	99.04	98.50
Dec-23	99.15	98.50
Jan-24	99.16	98.50
Feb-24	99.12	98.50
Mar-24	99.16	98.50
Apr-24	99.20	98.50
May-24	99.21	98.50
Jun-24	99.26	98.50
Jul-24	99.27	98.50
Aug-24	99.31	98.50
Sep-24	99.33	98.50

This table shows CCT drinking water quality compliance according to the South African National Standard 241:2015. Compliance, measured against all prescribed chemical and microbiological components, consistently exceeds the very high CCT target of 98.5%. (Overall compliance percentages of continuous sampling and analysis are released on a monthly basis.)