



Headline Statistics

<p>WCWSS DAM STORAGE (%)</p> <p>100.4</p>	<p>WEEKLY DAM LEVEL CHANGE (%)</p> <p>0.20</p>	<p>AVERAGE TOTAL DAILY WATER USE (MLD)</p> <p>858</p>
--	---	--

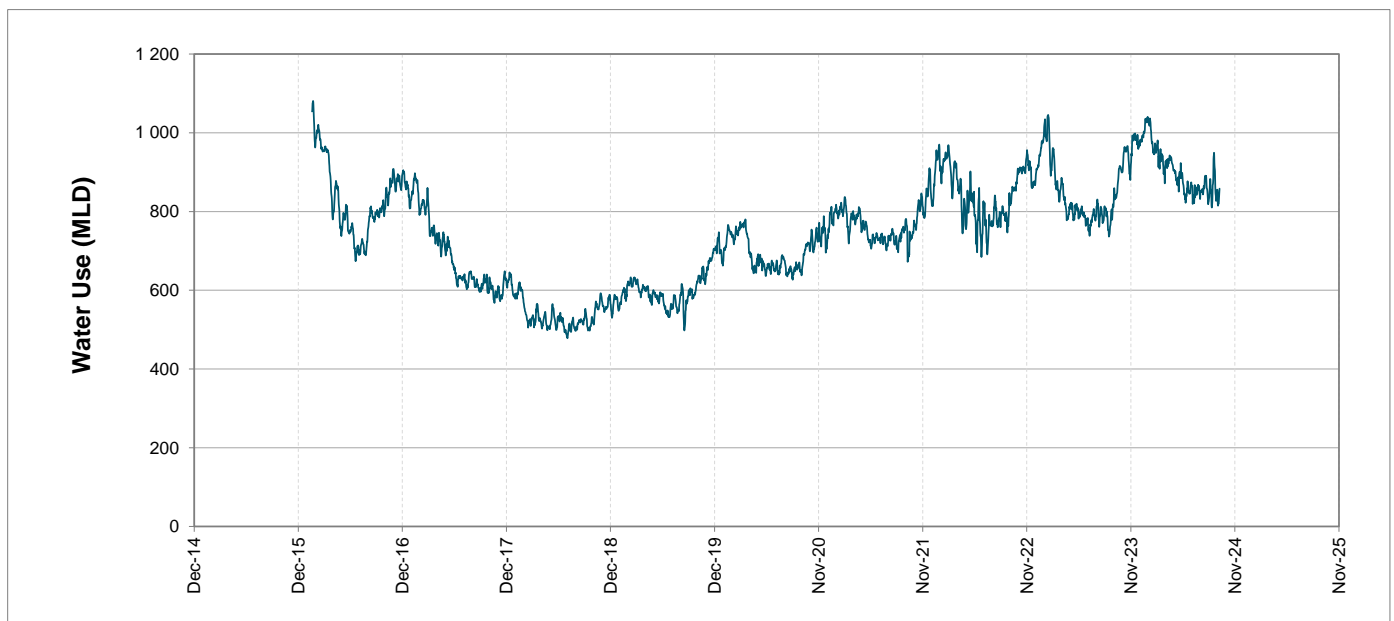
Water Resource Status

WATER RESOURCE STATUS	MEANING OF CURRENT STATUS
Wise Water Use	<p>Although early winter rains have been above average, the City will continue to monitor these levels. It is important to continue using water wisely.</p> <p>Note: The Water Resource status is updated every three (3) months. It will next be updated in November.</p>

Water Production from Different Sources

<p>MAJOR DAMS (MLD)</p> <p>855</p>	<p>MINOR DAMS (MLD)</p> <p>3</p>	<p>GROUND WATER AND SPRINGS (MLD)</p> <p>0</p>
---	---	---

Overall Water Usage Trend (2010 - Present)



WCWSS means Western Cape Water Supply System

MLD means million litres per day

More information on Water Saving and Restrictions is available on the City of Cape Town's 'ThinkWater' website

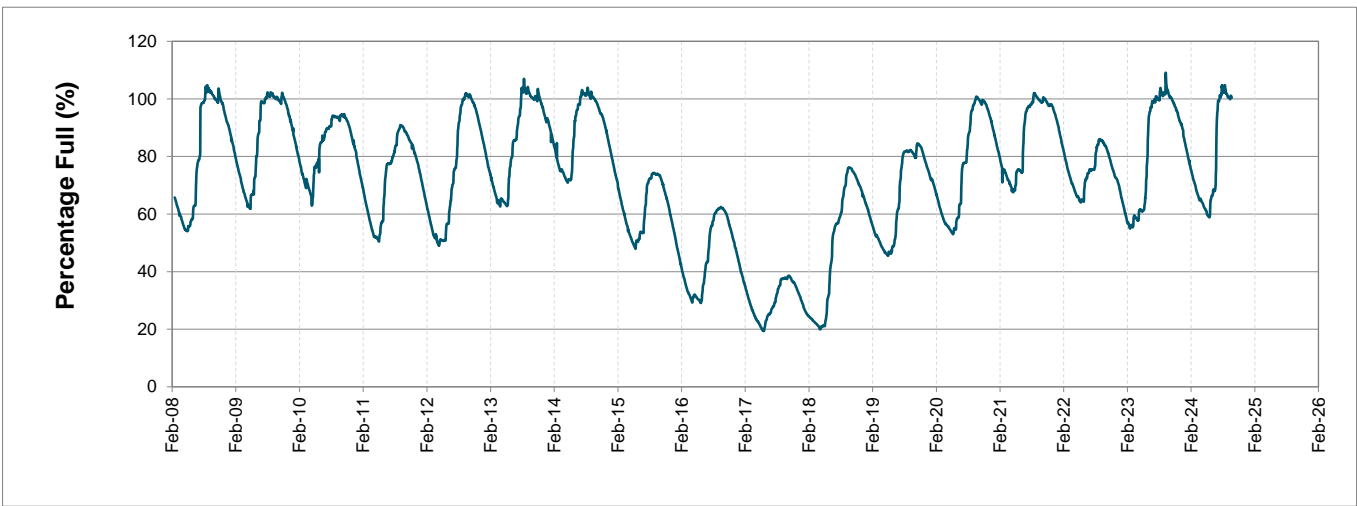
Water Stored in Major Dams (WCWSS)

Overall Percentage Full **100.4%**

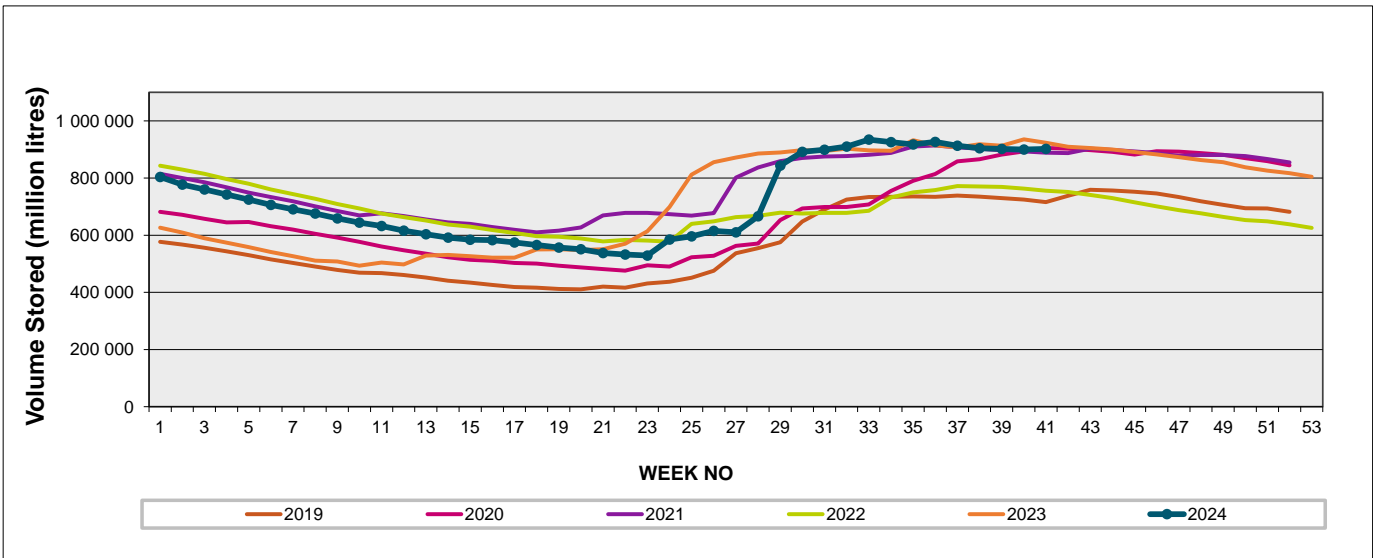
Weekly Change **0.2%**

MAJOR DAMS (WCWSS)	STORAGE						
	CAPACITY	%	%	%	%	%	%
	MI	07 October 2024	Previous week	2023	2022	2021	2020
BERG RIVER	130 010	100.2	100.9	100.6	99.5	99.6	100.4
STEENBRAS LOWER	33 517	98.3	98.3	100.9	91.4	96.4	100.3
STEENBRAS UPPER	31 767	98.4	99.5	97.5	92.0	97.0	98.3
THEEWATERSKLOOF	480 188	101.4	100.7	104.4	82.9	99.8	101.9
VOËLVLEI	164 095	98.6	98.8	101.8	72.1	99.4	98.8
WEMMERSHOEK	58 644	100.0	99.9	100.0	87.8	97.0	99.2
TOTAL STORED	898 221	901 685	900 119	922 648	757 351	891 888	905 045
% STORAGE		100.4%	100.2%	102.7%	84.3%	99.3%	100.8%

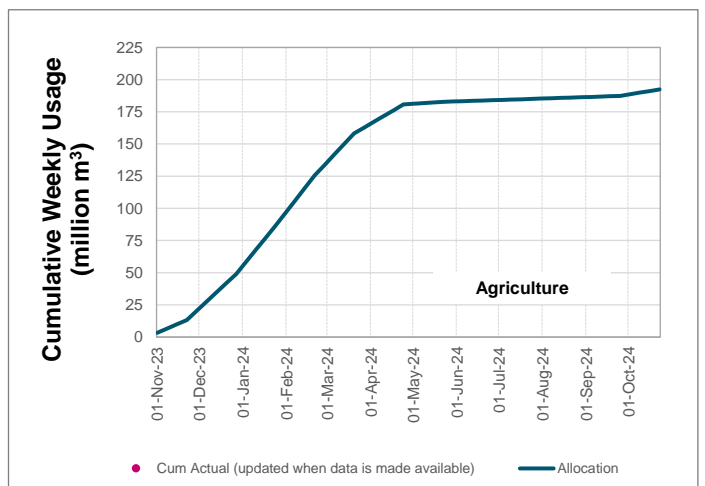
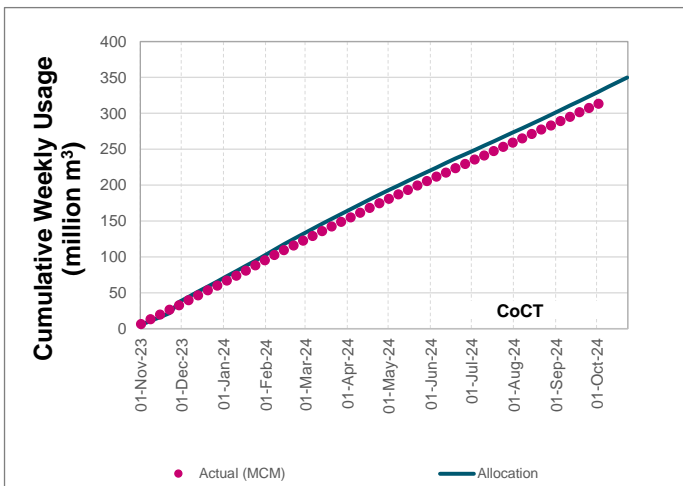
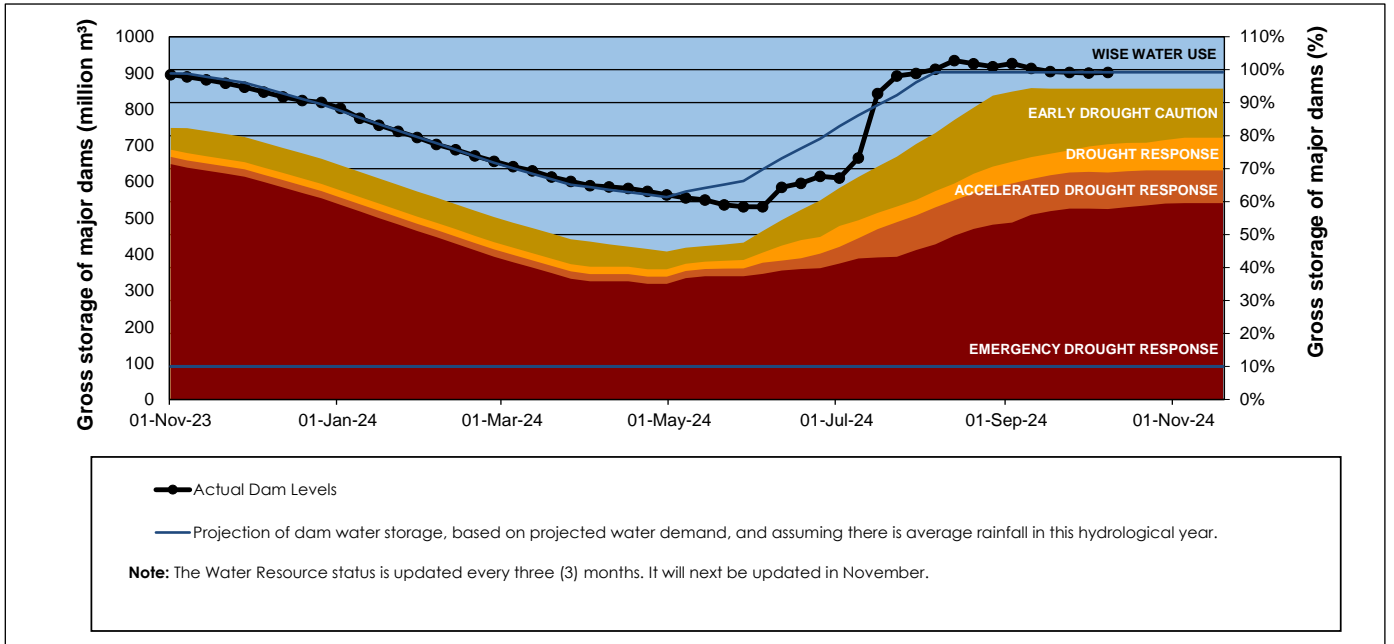
WCWSS Storage Record (2008 - Present)



WCWSS Comparative Storage Graph



Projected WCWSS Dam Storage Levels



Water Stored in Minor Dams

Overall Percentage Full **81.0**

Weekly Change **-0.08**

MINOR DAMS	STORAGE						
	CAPACITY	%	%	%	%	%	%
	MI	07 October 2024	Previous week	2023	2022	2021	2020
ALEXANDRA (Table Mountain)	126	90.2	85.2	96.0	83.8	66.1	98.7
DE VILLIERS (Table Mountain)	243	100.2	100.9	98.1	81.3	91.1	99.8
HELY-HUTCHINSON (Table Mount)	925	100.0	100.7	99.3	100.5	99.3	99.5
KLEINPLAATS (Simon's Town)	1 368	63.0	63.5	100.2	74.6	99.3	100.2
LAND-EN-ZEEZICHT (Helderberg)	451	99.4	99.4	99.4	86.0	100.0	95.3
LEWIS GAY (Simon's Town)	182	100.9	100.9	100.9	36.0	95.4	99.0
VICTORIA (Table Mountain)	128	100.4	101.9	100.4	99.6	98.5	100.4
WOODHEAD (Table Mountain)	954	70.1	69.5	90.5	59.9	72.7	98.4
Total Stored	4 377	3546.7	3550.2	4221.5	3376.6	3973.4	4283.4
Percentages stored		81.0	81.1	96.4	77.1	90.8	97.9

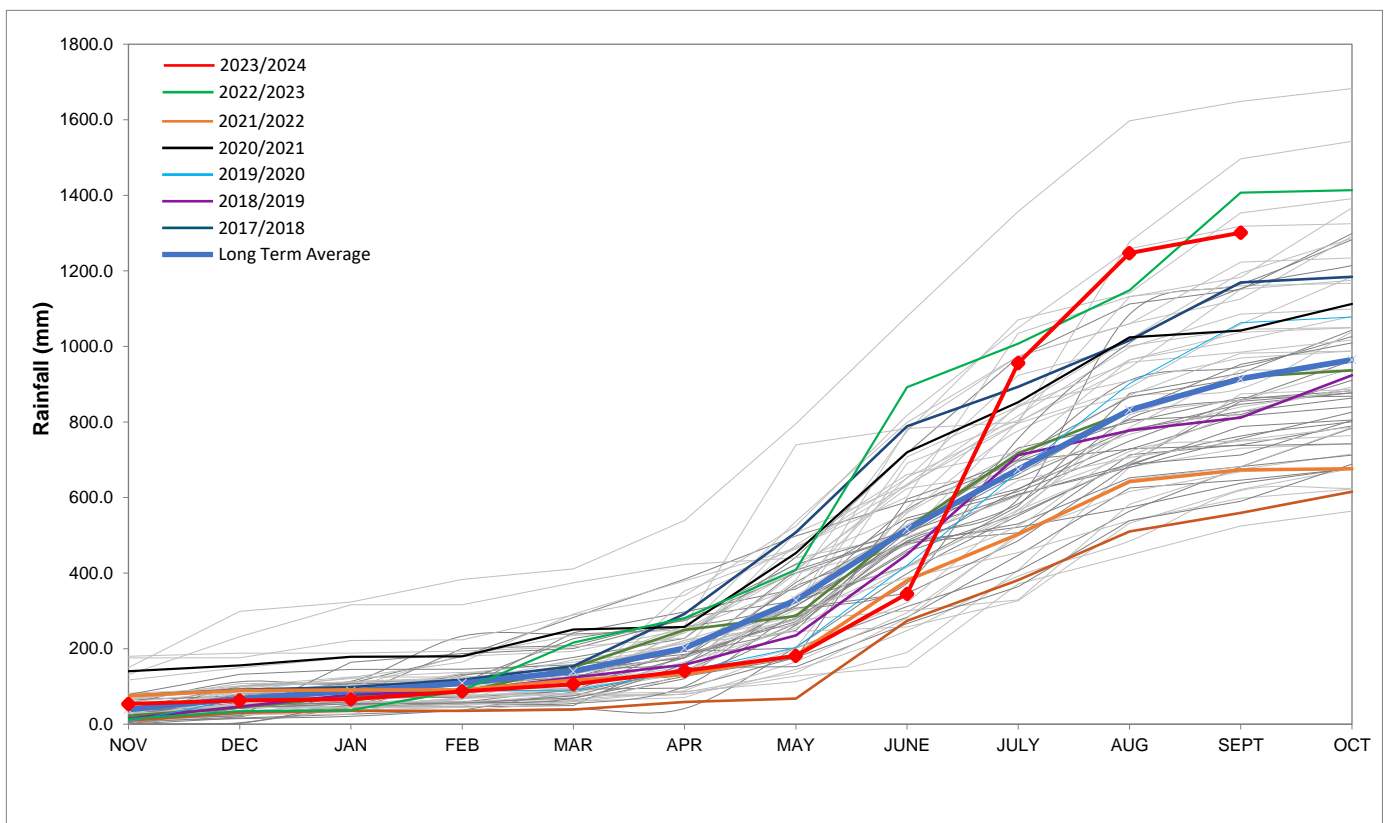
Rainfall Recorded

RAINFALL (mm)	30-Sep	01-Oct	02-Oct	03-Oct	04-Oct	05-Oct	06-Oct	Oct	
								Total*	LT Average
Blackheath Upper	8.5	0.0	0.0	0.0	0.0	0.0	0.0	8.5	26.8
Brooklands	0.0	0.0	0.0	0.0	0.0	0.0	0.0	0.0	47.7
Newlands	9.5	0.0	0.0	0.0	0.0	0.0	0.0	9.5	72.2
Steenbras	21.0	0.5	0.0	0.0	0.0	0.0	0.0	21.5	55.4
Table Mountain (Woodhead)	0.0	0.0	0.0	0.0	0.0	0.0	0.0	0.0	83.7
Theewaterskloof	7.4	0.0	0.0	0.0	0.0	0.0	0.0	7.4	44.1
Tygerberg	4.9	0.0	0.0	0.0	0.0	0.0	0.0	4.9	28.9
Voëlvlei	9.0	0.0	0.0	0.0	0.0	0.0	0.0	9.0	26.7
Wemmershoek	13.4	0.0	0.0	0.0	0.0	0.0	0.0	13.4	43.0
Wynberg	0.0	0.0	0.0	0.0	0.0	0.0	0.0	0.0	51.1

Notes: *Total/cumulative rainfall for month indicated above
LT: Long Term

Accumulated Monthly Rainfall at Wemmershoek

Note: Wemmershoek station used due to long record and mountainous location



Drinking Water Quality

Month	SAMPLE PASS RATE	
	Water Quality Compliance (%)	Target (%)
Nov-21	99.11	98
Dec-21	99.09	98
Jan-22	99.04	98
Feb-22	99.04	98
Mar-22	98.99	98
Apr-22	98.96	98
May-22	98.90	98
Jun-22	98.96	98
Jul-22	99.46	99
Aug-22	99.47	99
Sep-22	99.46	98.50
Oct-22	99.47	98.50
Nov-22	99.45	98.50
Dec-22	99.36	98.50
Jan-23	99.36	98.50
Feb-23	99.35	98.50
Mar-23	99.29	98.50
Apr-23	99.24	98.50
May-23	99.24	98.50
Jun-23	99.18	98.50
Jul-23	99.19	98.50
Aug-23	99.14	98.50
Sep-23	99.10	98.50
Oct-23	99.10	98.50
Nov-23	99.04	98.50
Dec-23	99.15	98.50
Jan-24	99.16	98.50
Feb-24	99.12	98.50
Mar-24	99.16	98.50
Apr-24	99.20	98.50
May-24	99.21	98.50
Jun-24	99.26	98.50
Jul-24	99.27	98.50
Aug-24	99.31	98.50

This table shows CCT drinking water quality compliance according to the South African National Standard 241:2015. Compliance, measured against all prescribed chemical and microbiological components, consistently exceeds the very high CCT target of 98.5%. (Overall compliance percentages of continuous sampling and analysis are released on a monthly basis.