



Headline Statistics

<p>WCWSS DAM STORAGE (%)</p> <p>100.7</p>	<p>WEEKLY DAM LEVEL CHANGE (%)</p> <p>-0.90</p>	<p>AVERAGE TOTAL DAILY WATER USE (MLD)</p> <p>912</p>
--	--	--

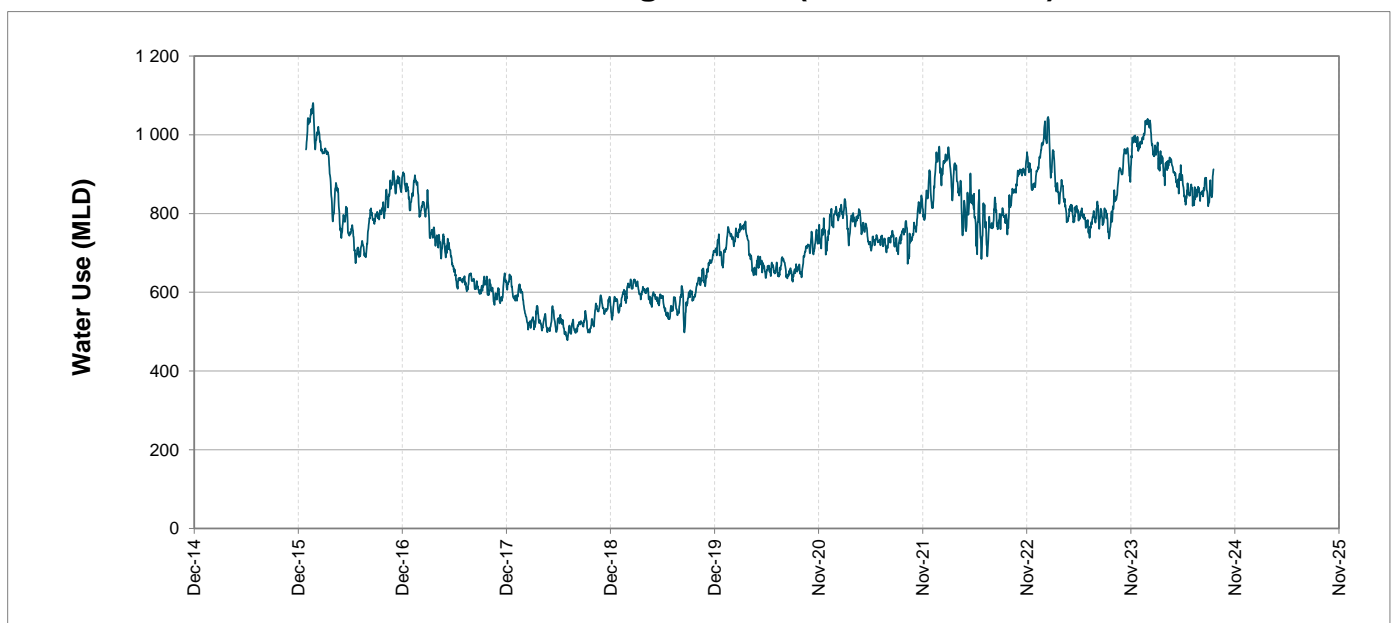
Water Resource Status

WATER RESOURCE STATUS	MEANING OF CURRENT STATUS
Wise Water Use	<p>Although early winter rains have been above average, the City will continue to monitor these levels. It is important to continue using water wisely.</p> <p>Note: The Water Resource status is updated every three (3) months. It will next be updated in November.</p>

Water Production from Different Sources

<p>MAJOR DAMS (MLD)</p> <p>908</p>	<p>MINOR DAMS (MLD)</p> <p>4</p>	<p>GROUND WATER AND SPRINGS (MLD)</p> <p>0</p>
---	---	---

Overall Water Usage Trend (2010 - Present)



WCWSS means Western Cape Water Supply System

MLD means million litres per day

More information on Water Saving and Restrictions is available on the City of Cape Town's 'ThinkWater' website

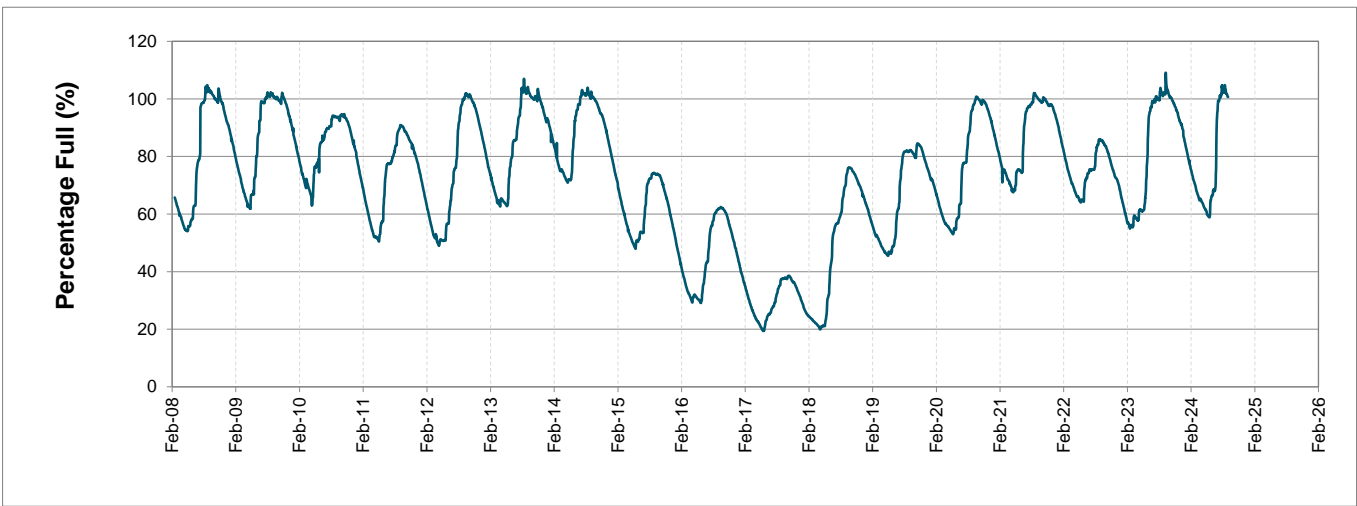
Water Stored in Major Dams (WCWSS)

Overall Percentage Full **100.7%**

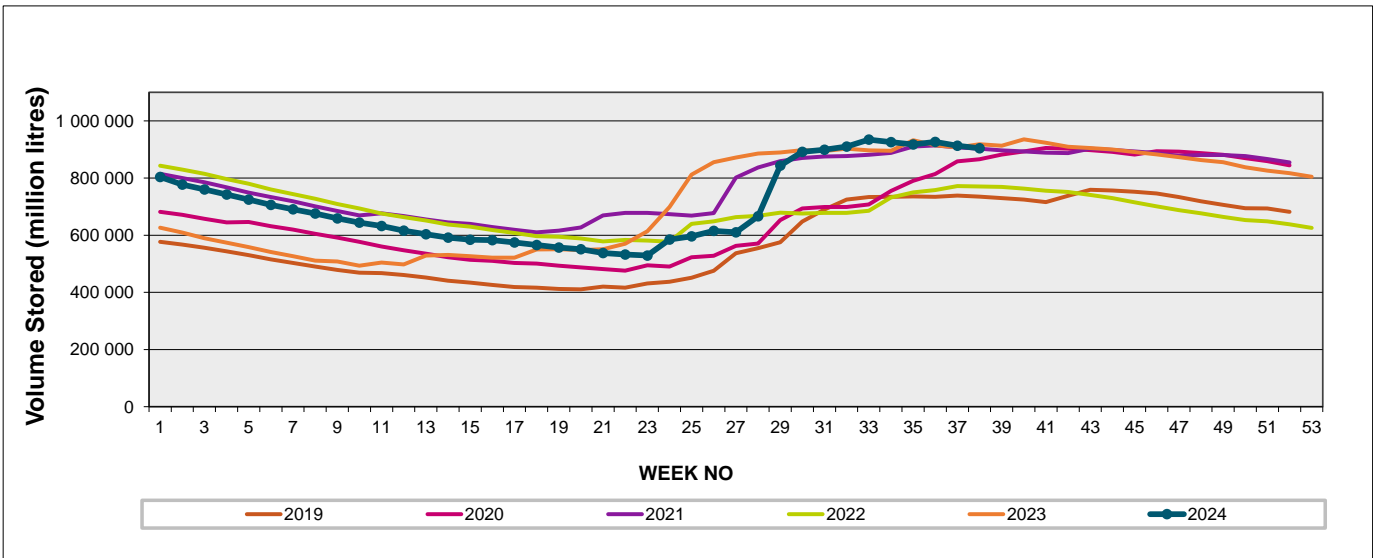
Weekly Change **-0.9%**

MAJOR DAMS (WCWSS)	STORAGE						
	CAPACITY	%	%	%	%	%	%
	MI	16 September 2024	Previous week	2023	2022	2021	2020
BERG RIVER	130 010	99.8	100.1	101.2	100.1	100.2	100.5
STEENBRAS LOWER	33 517	100.5	101.3	101.8	94.4	100.3	100.4
STEENBRAS UPPER	31 767	101.0	100.8	98.7	92.8	96.5	99.9
THEEWATERSKLOOF	480 188	101.0	102.2	102.5	85.6	101.4	97.2
VOËLVLEI	164 095	100.7	101.9	100.9	72.3	100.7	95.4
WEMMERSHOEK	58 644	100.0	99.9	100.0	86.3	100.0	96.1
TOTAL STORED	898 221	904 220	912 934	913 233	771 665	905 265	875 450
% STORAGE		100.7%	101.6%	101.7%	85.9%	100.8%	97.5%

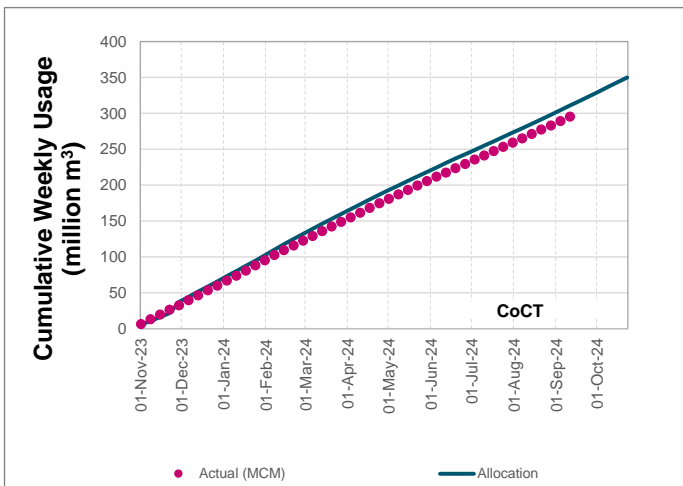
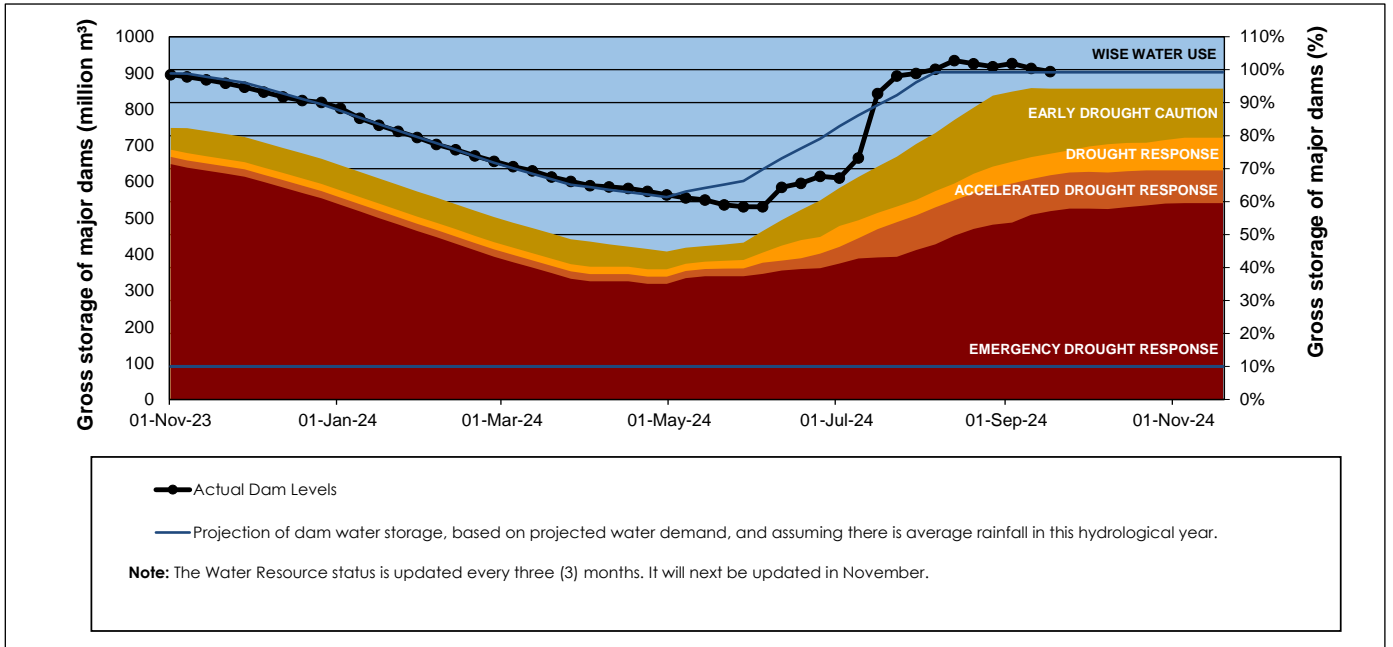
WCWSS Storage Record (2008 - Present)



WCWSS Comparative Storage Graph



Projected WCWSS Dam Storage Levels



Water Stored in Minor Dams

Overall Percentage Full **No Data**

Weekly Change **No Data**

MINOR DAMS	STORAGE						
	CAPACITY	%	%	%	%	%	%
	MI	16 September 2024	Previous week	2023	2022	2021	2020
ALEXANDRA (Table Mountain)	126	No Data	97.6	98.0	95.3	74.4	100.0
DE VILLIERS (Table Mountain)	243	No Data	99.3	100.5	94.6	100.2	100.2
HELY-HUTCHINSON (Table Mount)	925	No Data	99.3	100.7	99.7	99.7	100.5
KLEINPLAATS (Simon's Town)	1 368	81.2	98.0	100.2	76.6	100.0	99.1
LAND-EN-ZEEZICHT (Helderberg)	451	99.4	99.4	99.4	86.9	100.0	92.3
LEWIS GAY (Simon's Town)	182	100.9	100.9	100.9	36.0	100.7	96.3
VICTORIA (Table Mountain)	128	No Data	99.6	100.8	100.0	100.4	100.0
WOODHEAD (Table Mountain)	954	No Data	83.8	100.5	84.7	96.7	96.7
Total Stored	4 377	No Data	4132.5	4338.1	3683.7	4259.6	4245.7
Percentages stored		No Data	94.4	99.1	84.2	97.3	97.0

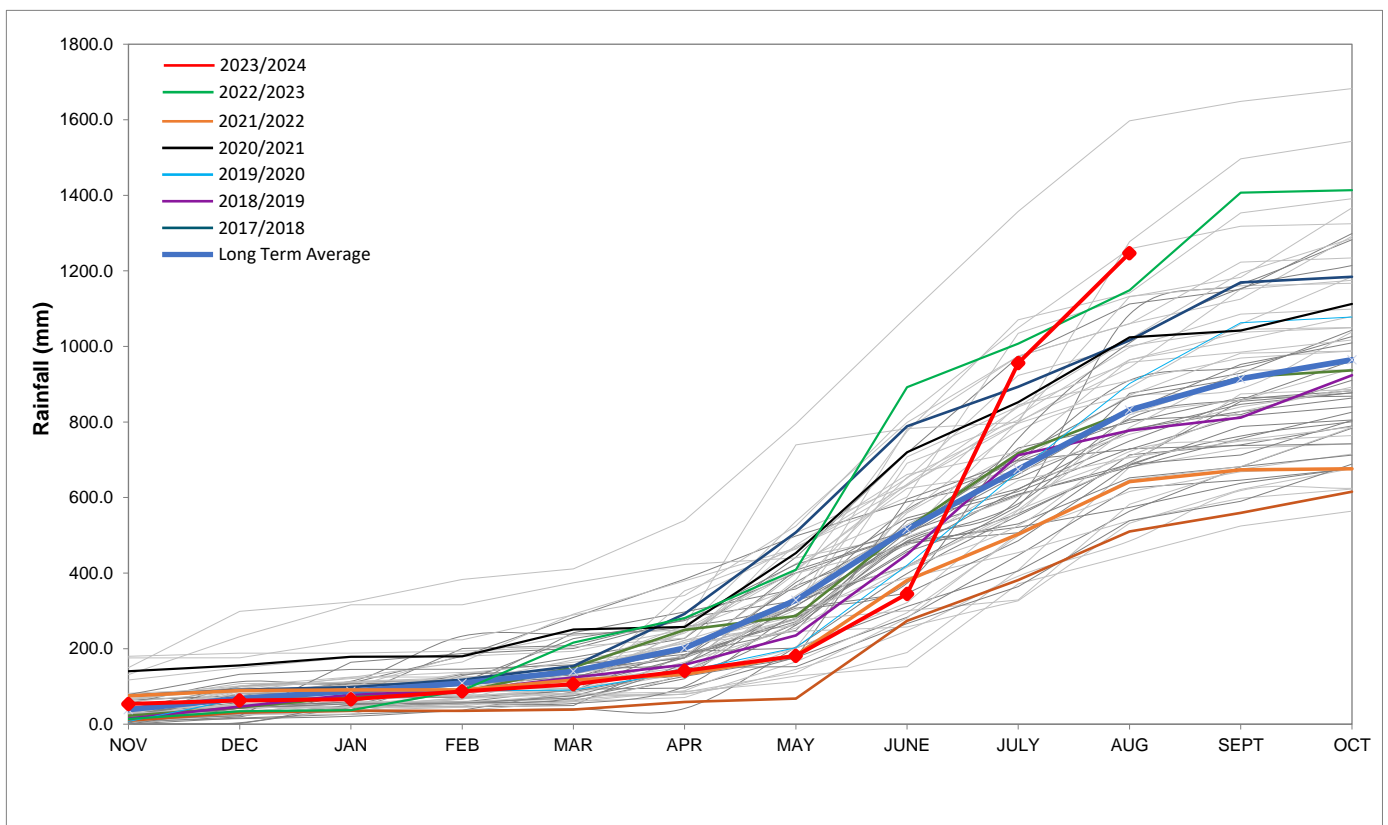
Rainfall Recorded

RAINFALL (mm)	09-Sep	10-Sep	11-Sep	12-Sep	13-Sep	14-Sep	15-Sep	Sep	
								Total*	LT Average
Blackheath Upper	0.0	0.0	0.0	0.0	0.0	0.0	0.0	2.0	43.5
Brooklands	0.0	0.0	0.0	0.0	0.0	0.0	3.0	5.0	85.7
Newlands	0.0	0.0	0.0	0.0	0.0	0.0	0.0	1.0	168.3
Steenbras	0.0	0.0	0.9	0.0	0.0	0.0	2.5	7.0	83.6
Table Mountain (Woodhead)	0.0	0.0	0.0	0.0				2.3	147.2
Theewaterskloof	0.0	0.0	0.0	0.0	0.0	0.0	0.0	1.8	41.1
Tygerberg	0.0	0.0	0.0	0.0	0.0	0.0	1.2	2.8	47.0
Voëlvlei	0.0	0.0	0.0	0.0	0.0	0.0	0.0	0.4	45.1
Wemmershoek	0.0	0.0	0.0	0.0	0.0	0.0	0.0	1.2	90.3
Wynberg	0.0	0.0	0.0	0.0	0.0	0.0	0.0	0.0	97.8

Notes: *Total/cummulative rainfall for month indicated above
LT: Long Term

Accumulated Monthly Rainfall at Wemmershoek

Note: Wemmershoek station used due to long record and mountainous location



Drinking Water Quality

Month	SAMPLE PASS RATE	
	Water Quality Compliance (%)	Target (%)
Nov-21	99.11	98
Dec-21	99.09	98
Jan-22	99.04	98
Feb-22	99.04	98
Mar-22	98.99	98
Apr-22	98.96	98
May-22	98.90	98
Jun-22	98.96	98
Jul-22	99.46	99
Aug-22	99.47	99
Sep-22	99.46	98.50
Oct-22	99.47	98.50
Nov-22	99.45	98.50
Dec-22	99.36	98.50
Jan-23	99.36	98.50
Feb-23	99.35	98.50
Mar-23	99.29	98.50
Apr-23	99.24	98.50
May-23	99.24	98.50
Jun-23	99.18	98.50
Jul-23	99.19	98.50
Aug-23	99.14	98.50
Sep-23	99.10	98.50
Oct-23	99.10	98.50
Nov-23	99.04	98.50
Dec-23	99.15	98.50
Jan-24	99.16	98.50
Feb-24	99.12	98.50
Mar-24	99.16	98.50
Apr-24	99.20	98.50
May-24	99.21	98.50
Jun-24	99.26	98.50
Jul-24	99.27	98.50

This table shows CCT drinking water quality compliance according to the South African National Standard 241:2015. Compliance, measured against all prescribed chemical and microbiological components, consistently exceeds the very high CCT target of 98.5%. (Overall compliance percentages of continuous sampling and analysis are released on a monthly basis.