



Headline Statistics

WCWSS DAM STORAGE (%)

101.7

WEEKLY DAM LEVEL CHANGE (%)

-1.40

AVERAGE TOTAL DAILY WATER USE (MLD)

847

Water Resource Status

WATER RESOURCE STATUS	MEANING OF CURRENT STATUS
Wise Water Use	<p>Although early winter rains have been above average, the City will continue to monitor these levels. It is important to continue using water wisely.</p> <p>Note: The Water Resource status is updated every three (3) months. It will next be updated in November.</p>

Water Production from Different Sources

MAJOR DAMS (MLD)

844

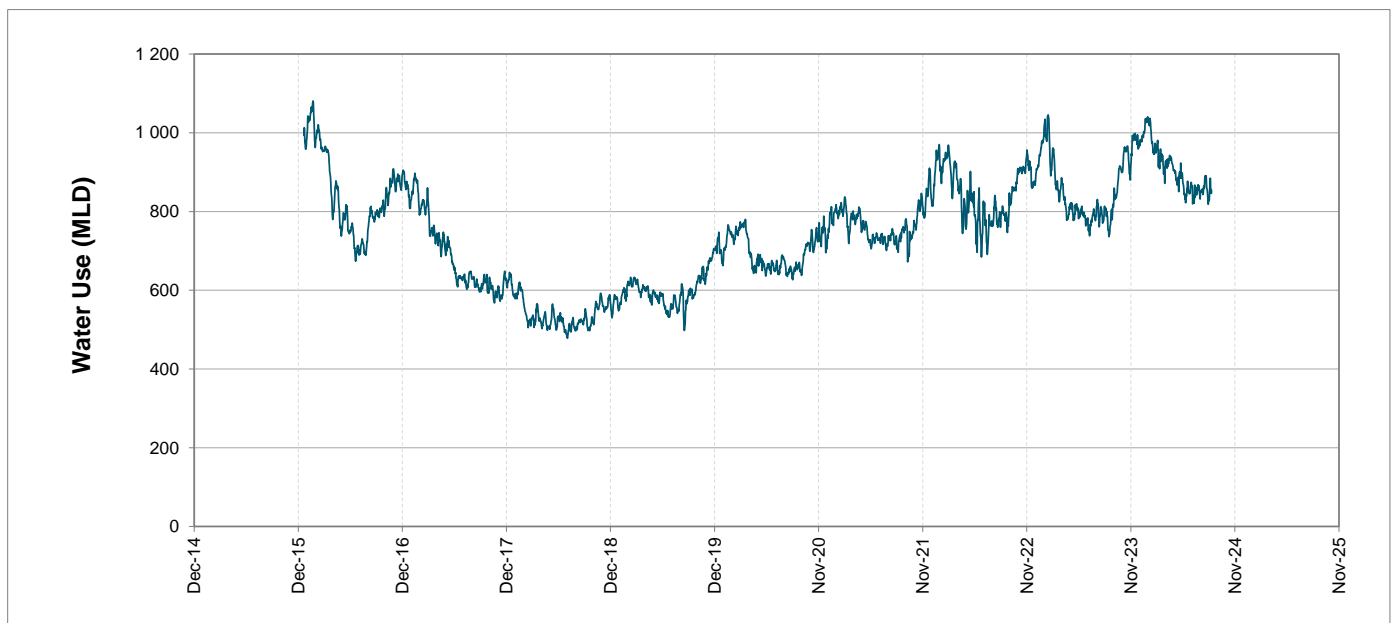
MINOR DAMS (MLD)

3

GROUND WATER AND SPRINGS (MLD)

0

Overall Water Usage Trend (2010 - Present)



WCWSS means Western Cape Water Supply System

MLD means million litres per day

More information on Water Saving and Restrictions is available on the City of Cape Town's 'ThinkWater' website

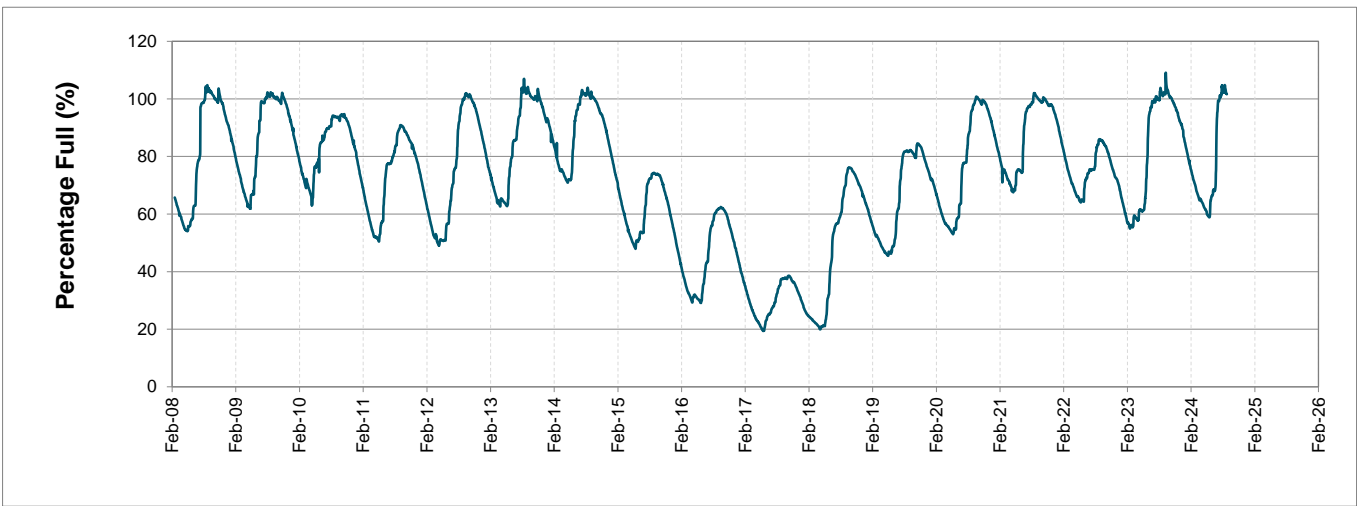
Water Stored in Major Dams (WCWSS)

Overall Percentage Full **101.7%**

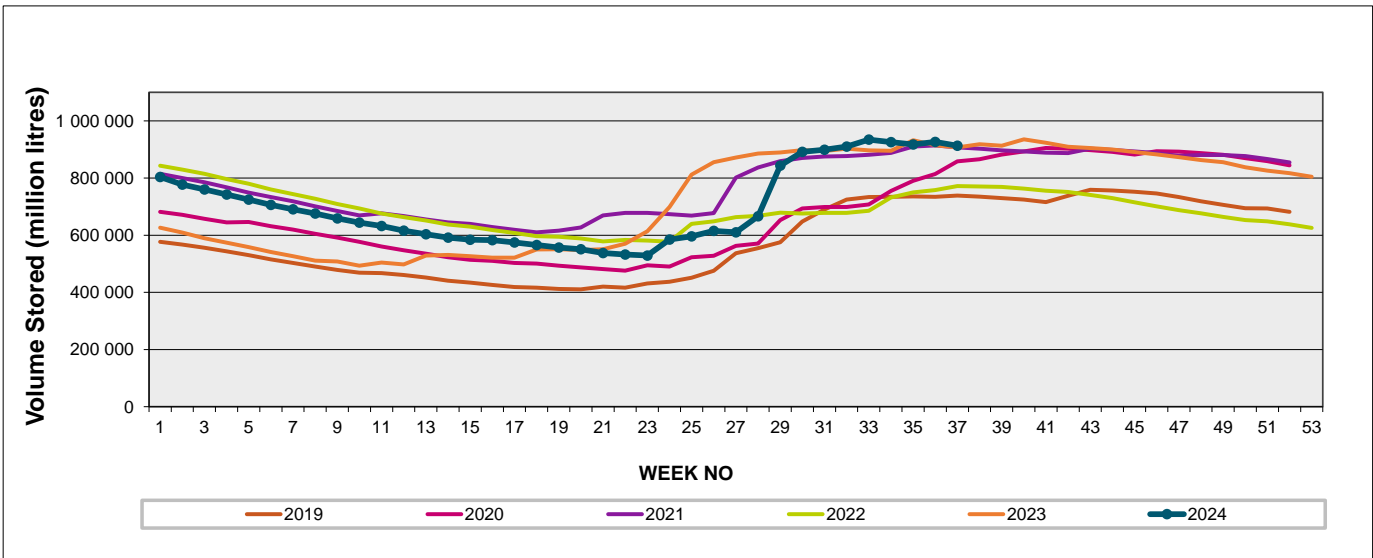
Weekly Change **-1.4%**

MAJOR DAMS (WCWSS)	STORAGE						
	CAPACITY	%	%	%	%	%	%
	MI	09 September 2024	Previous week	2023	2022	2021	2020
BERG RIVER	130 010	100.2	100.6	100.5	100.5	100.5	100.4
STEENBRAS LOWER	33 517	101.3	102.5	101.1	92.7	100.9	101.0
STEENBRAS UPPER	31 767	100.8	101.3	96.8	90.2	96.3	100.2
THEEWATERSKLOOF	480 188	102.2	104.2	101.6	85.8	102.6	95.2
VOËLVLEI	164 095	101.9	103.6	100.6	71.6	100.6	93.5
WEMMERSHOEK	58 644	99.9	99.9	100.0	85.3	100.0	94.5
TOTAL STORED	898 221	913 144	926 137	906 782	769 912	911 182	862 226
% STORAGE		101.7%	103.1%	101.0%	85.7%	101.4%	96.0%

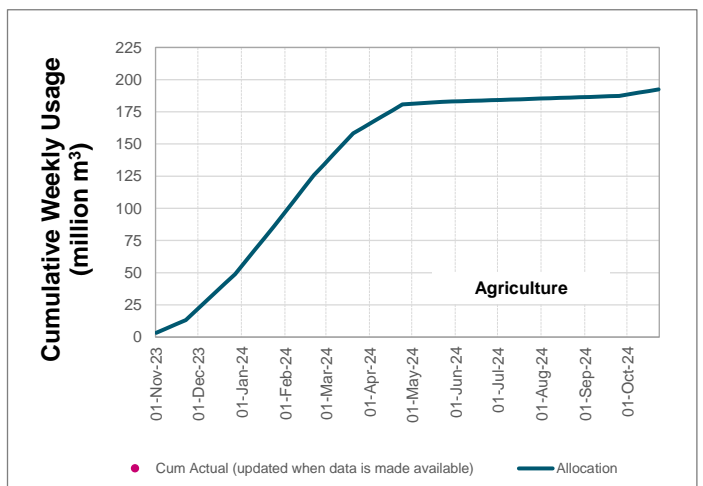
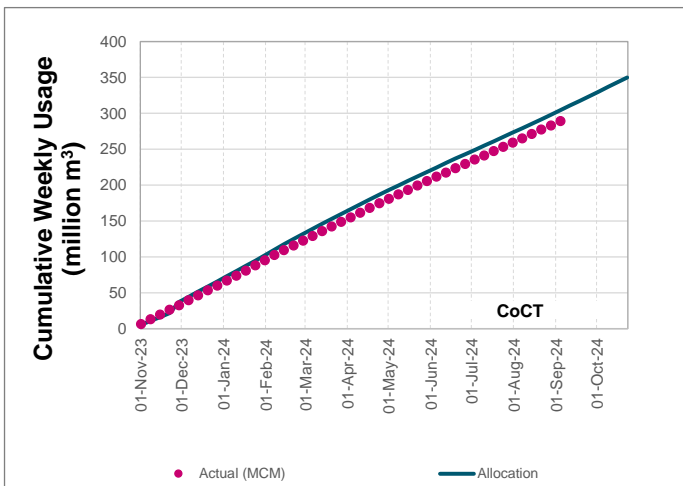
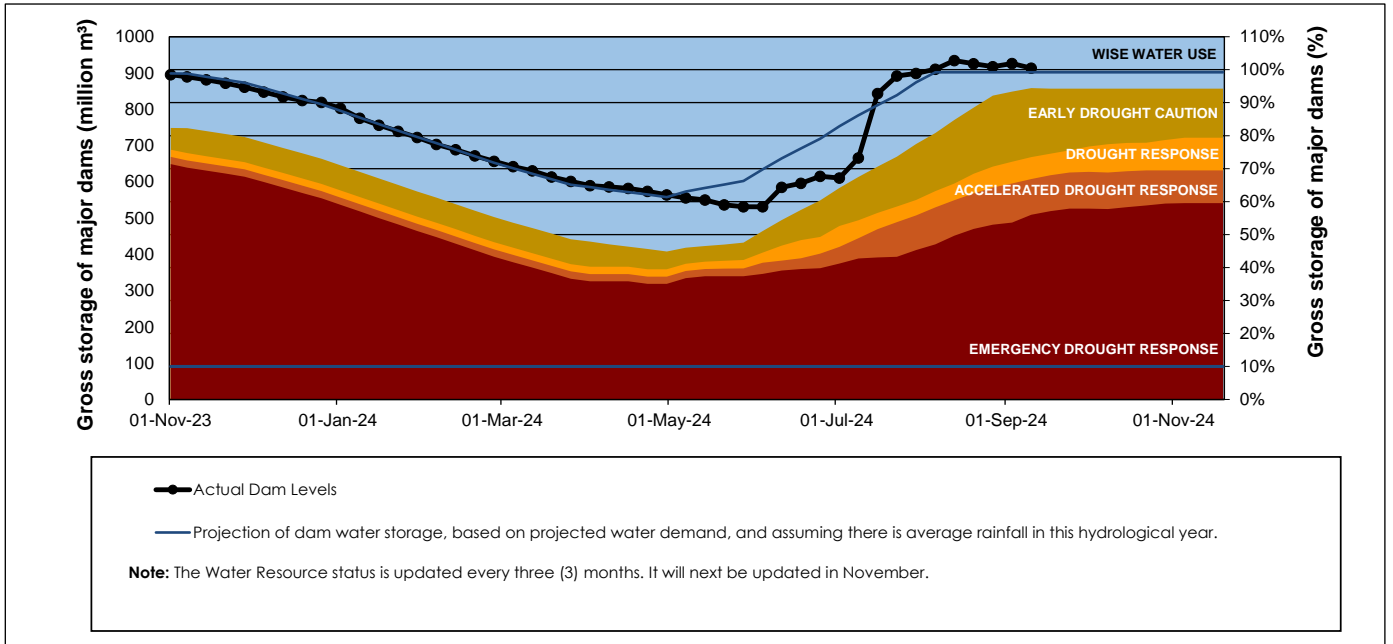
WCWSS Storage Record (2008 - Present)



WCWSS Comparative Storage Graph



Projected WCWSS Dam Storage Levels



Water Stored in Minor Dams

Overall Percentage Full **95.0**

Weekly Change **No Data**

MINOR DAMS	STORAGE						
	CAPACITY	%	%	%	%	%	%
	MI	09 September 2024	Previous week	2023	2022	2021	2020
ALEXANDRA (Table Mountain)	126	100.0	No Data	96.0	98.3	72.1	98.7
DE VILLIERS (Table Mountain)	243	99.1	No Data	100.3	99.7	100.2	100.2
HELY-HUTCHINSON (Table Mount)	925	99.0	No Data	99.8	100.3	99.5	100.2
KLEINPLAATS (Simon's Town)	1 368	98.0	93.6	100.2	75.9	100.0	94.7
LAND-EN-ZEEZICHT (Helderberg)	451	99.4	99.4	99.4	86.5	100.0	90.9
LEWIS GAY (Simon's Town)	182	100.9	100.9	100.9	39.6	100.9	100.5
VICTORIA (Table Mountain)	128	98.9	No Data	100.4	100.8	99.6	101.2
WOODHEAD (Table Mountain)	954	86.7	No Data	99.1	94.3	98.6	100.0
Total Stored	4 377	4158.8	No Data	4313.4	3794.0	4272.8	4217.1
Percentages stored		95.0	No Data	98.5	86.7	97.6	96.3

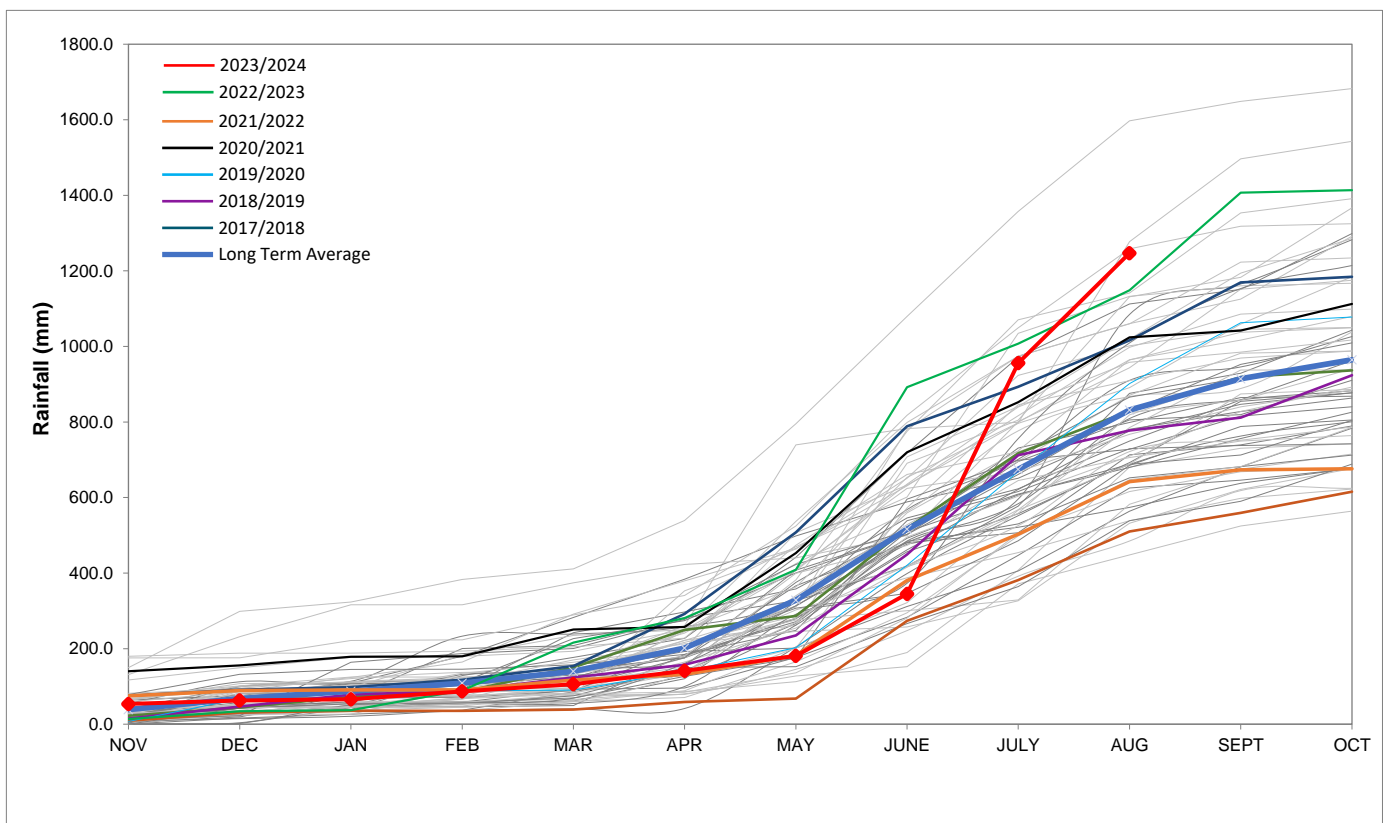
Rainfall Recorded

RAINFALL (mm)	02-Sep	03-Sep	04-Sep	05-Sep	06-Sep	07-Sep	08-Sep	Sep	
								Total*	LT Average
Blackheath Upper	0.0	0.0	0.0	0.0	0.0	2.0	0.0	2.0	43.5
Brooklands	0.0	0.0	0.0	0.0	0.0	2.0	0.0	2.0	85.7
Newlands	0.0	0.0	1.0	0.0	0.0	0.0	0.0	1.0	168.3
Steenbras	0.0	0.0	0.8	0.8	0.0	1.5	0.5	3.6	83.6
Table Mountain (Woodhead)	0.0	0.0	1.5	0.0	0.0	0.2	0.0	1.7	147.2
Theewaterskloof	0.0	0.0	0.7	0.0	0.0	1.1	0.0	1.8	41.1
Tygerberg	0.0	0.0	0.0	0.0	0.0	0.3	1.3	1.6	47.0
Voëlvlei	0.0	0.0	0.4	0.0	0.0	0.0	0.0	0.4	45.1
Wemmershoek	0.0	0.0	0.0	0.0	0.0	0.0	1.2	1.2	90.3
Wynberg	0.0	0.0	0.0	0.0	0.0	0.0	0.0	0.0	97.8

Notes: *Total/cummulative rainfall for month indicated above
LT: Long Term

Accumulated Monthly Rainfall at Wemmershoek

Note: Wemmershoek station used due to long record and mountainous location



Drinking Water Quality

Month	SAMPLE PASS RATE	
	Water Quality Compliance (%)	Target (%)
Nov-21	99.11	98
Dec-21	99.09	98
Jan-22	99.04	98
Feb-22	99.04	98
Mar-22	98.99	98
Apr-22	98.96	98
May-22	98.90	98
Jun-22	98.96	98
Jul-22	99.46	99
Aug-22	99.47	99
Sep-22	99.46	98.50
Oct-22	99.47	98.50
Nov-22	99.45	98.50
Dec-22	99.36	98.50
Jan-23	99.36	98.50
Feb-23	99.35	98.50
Mar-23	99.29	98.50
Apr-23	99.24	98.50
May-23	99.24	98.50
Jun-23	99.18	98.50
Jul-23	99.19	98.50
Aug-23	99.14	98.50
Sep-23	99.10	98.50
Oct-23	99.10	98.50
Nov-23	99.04	98.50
Dec-23	99.15	98.50
Jan-24	99.16	98.50
Feb-24	99.12	98.50
Mar-24	99.16	98.50
Apr-24	99.20	98.50
May-24	99.21	98.50
Jun-24	99.26	98.50
Jul-24	99.27	98.50

This table shows CCT drinking water quality compliance according to the South African National Standard 241:2015. Compliance, measured against all prescribed chemical and microbiological components, consistently exceeds the very high CCT target of 98.5%. (Overall compliance percentages of continuous sampling and analysis are released on a monthly basis.