



Headline Statistics

WCWSS DAM STORAGE (%)

**68.0**

WEEKLY DAM LEVEL CHANGE (%)

**-0.50**

AVERAGE TOTAL DAILY WATER USE (MLD)

**865**

Water Resource Status

WATER RESOURCE STATUS	MEANING OF CURRENT STATUS
Wise Water Use	<p>Although early winter rains have been above average, the City will continue to monitor these levels. It is important to continue using water wisely.</p> <p><b>Note:</b> The Water Resource status is updated every three (3) months. It will next be updated in August.</p>

Water Production from Different Sources

MAJOR DAMS (MLD)

**861**

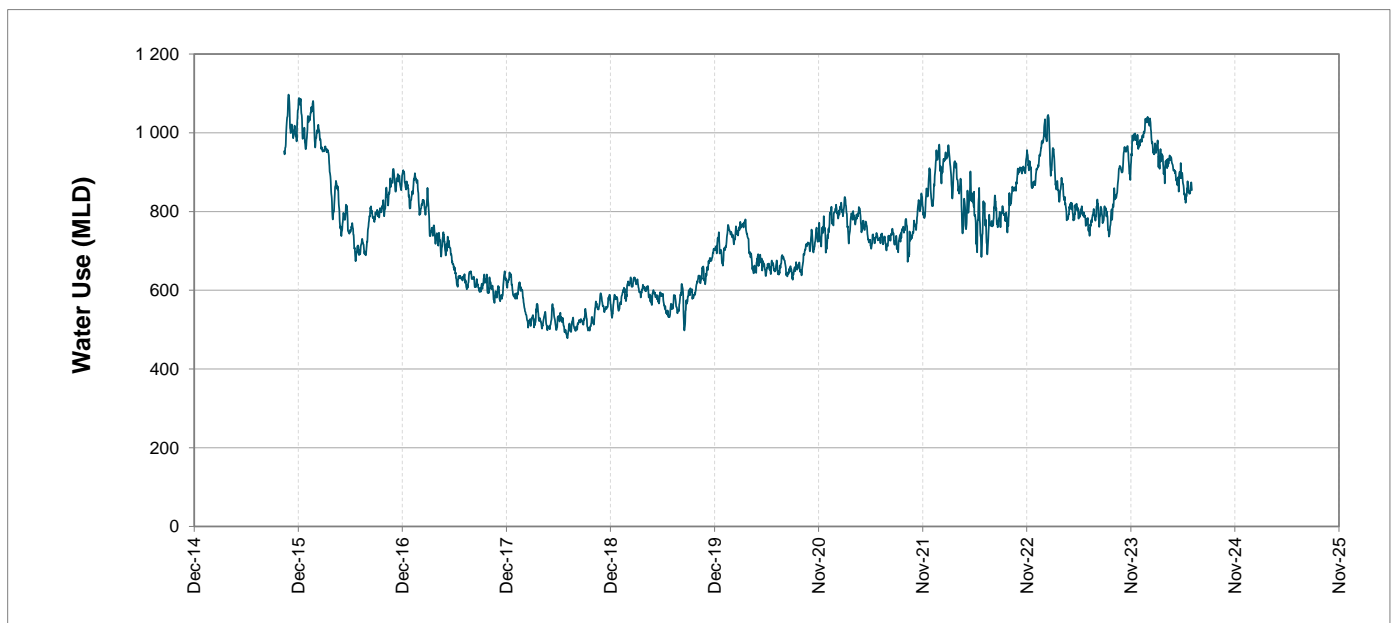
MINOR DAMS (MLD)

**4**

GROUND WATER AND SPRINGS (MLD)

**0**

Overall Water Usage Trend (2010 - Present)



WCWSS means Western Cape Water Supply System

MLD means million litres per day

More information on Water Saving and Restrictions is available on the City of Cape Town's 'ThinkWater' website

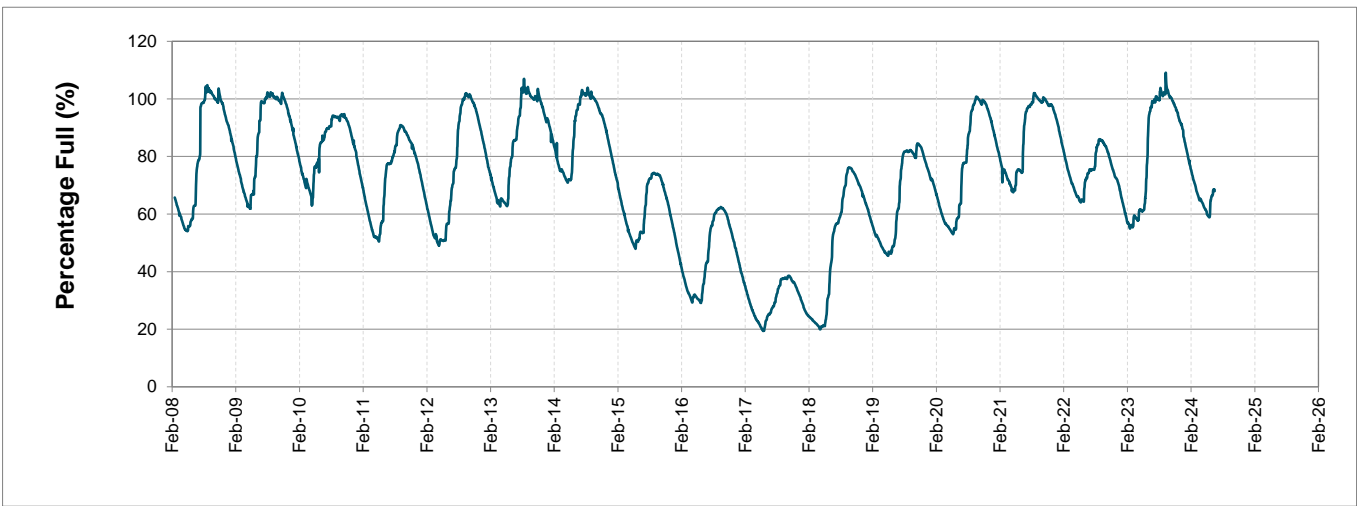
# Water Stored in Major Dams (WCWSS)

Overall Percentage Full **68.0%**

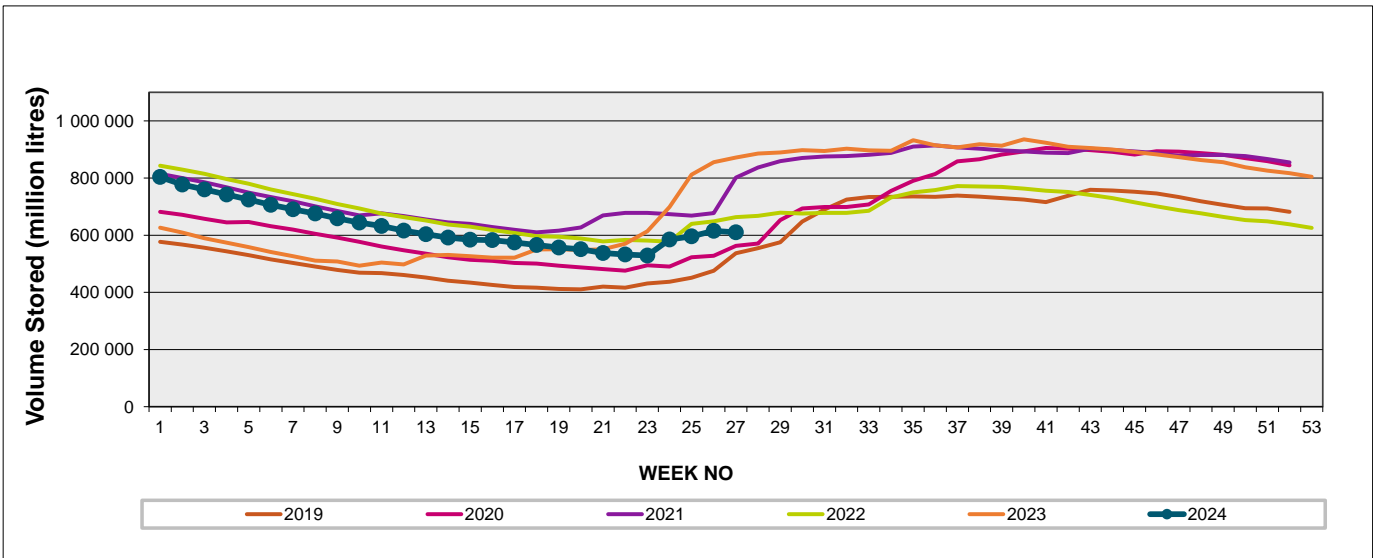
Weekly Change **-0.5%**

MAJOR DAMS (WCWSS)	STORAGE						
	CAPACITY	%	%	%	%	%	%
	MI	01 July 2024	Previous week	2023	2022	2021	2020
BERG RIVER	130 010	87.5	87.8	101.3	82.6	104.6	82.2
STEENBRAS LOWER	33 517	71.3	71.8	100.4	78.8	71.9	55.5
STEENBRAS UPPER	31 767	90.2	90.3	97.0	87.9	66.5	100.1
THEEWATERSKLOOF	480 188	62.8	64.0	103.0	74.1	87.4	59.7
VOËLVLEI	164 095	60.1	59.2	73.3	61.2	65.4	57.5
WEMMERSHOEK	58 644	75.1	74.6	100.0	56.6	78.4	50.2
<b>TOTAL STORED</b>	<b>898 221</b>	<b>610 398</b>	<b>615 145</b>	<b>869 595</b>	<b>651 096</b>	<b>754 154</b>	<b>567 675</b>
<b>% STORAGE</b>		<b>68.0%</b>	<b>68.5%</b>	<b>96.8%</b>	<b>72.5%</b>	<b>84.0%</b>	<b>63.2%</b>

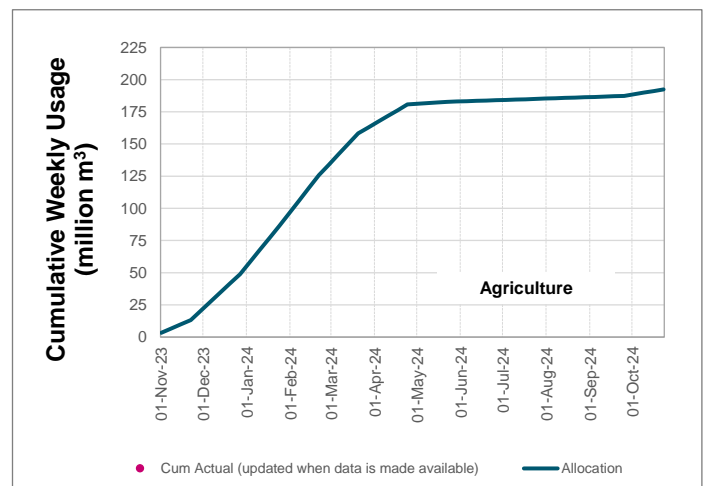
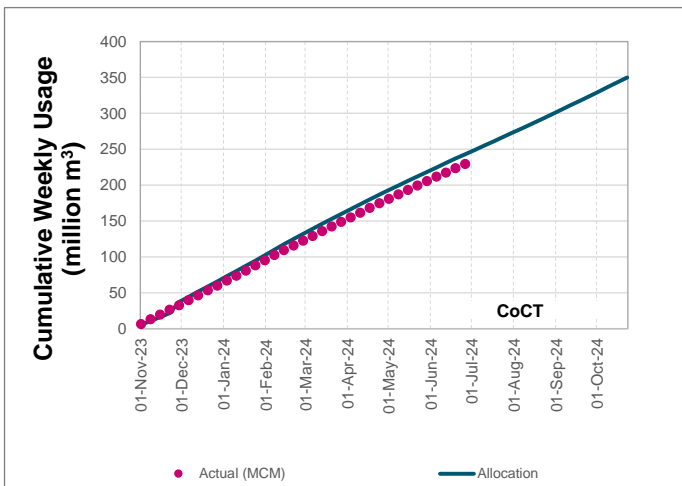
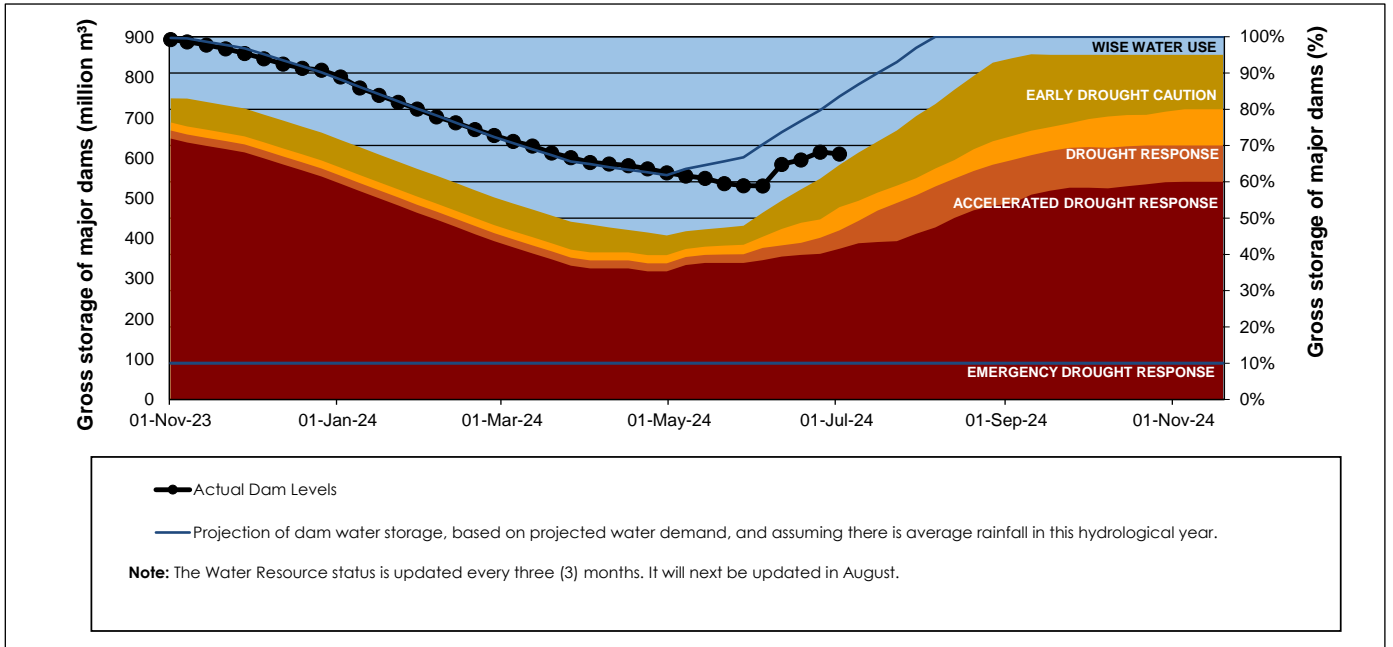
## WCWSS Storage Record (2008 - Present)



## WCWSS Comparative Storage Graph



# Projected WCWSS Dam Storage Levels



## Water Stored in Minor Dams

Overall Percentage Full **59.7**

Weekly Change **-0.05**

MINOR DAMS	STORAGE						
	CAPACITY	%	%	%	%	%	%
	MI	01 July 2024	Previous week	2023	2022	2021	2020
ALEXANDRA (Table Mountain)	126	50.2	51.5	100.0	74.8	19.8	53.2
DE VILLIERS (Table Mountain)	243	100.2	100.3	100.2	96.4	70.6	100.7
HELY-HUTCHINSON (Table Mount)	925	33.5	32.7	100.3	99.5	91.9	80.6
KLEINPLAATS (Simon's Town)	1 368	42.4	42.4	68.5	45.1	51.4	39.6
LAND-EN-ZEEZICHT (Helderberg)	451	99.4	99.4	99.4	80.0	71.9	70.4
LEWIS GAY (Simon's Town)	182	57.6	62.6	100.9	64.5	93.6	53.8
VICTORIA (Table Mountain)	128	99.6	100.8	101.2	100.0	38.4	103.8
WOODHEAD (Table Mountain)	954	78.1	77.9	100.2	61.2	79.0	99.8
<b>Total Stored</b>	<b>4 377</b>	<b>2611.9</b>	<b>2614.2</b>	<b>3922.3</b>	<b>3040.4</b>	<b>3017.1</b>	<b>3085.3</b>
<b>Percentages stored</b>		<b>59.7</b>	<b>59.7</b>	<b>89.6</b>	<b>69.5</b>	<b>68.9</b>	<b>70.5</b>

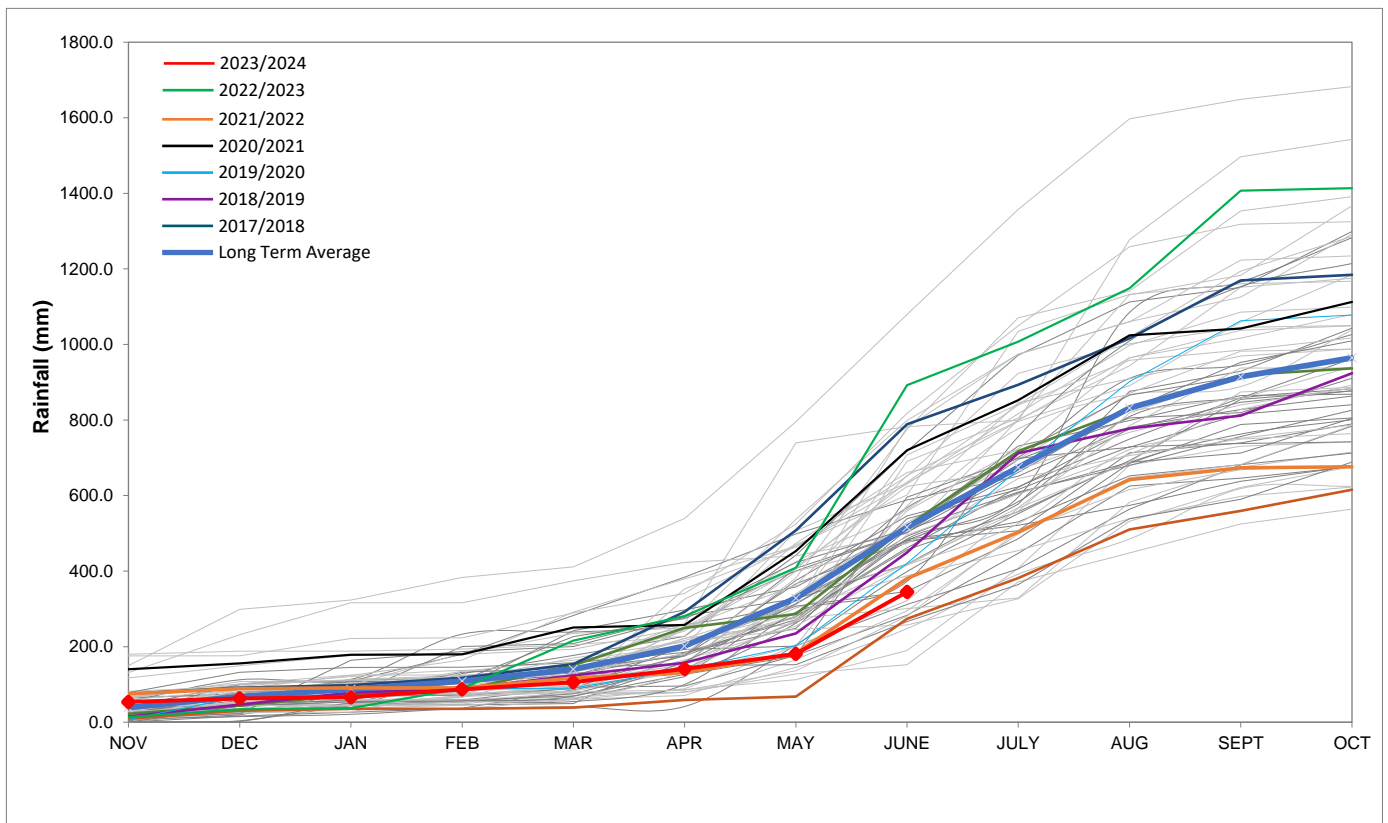
## Rainfall Recorded

RAINFALL (mm)	24-Jun	25-Jun	26-Jun	27-Jun	28-Jun	29-Jun	30-Jun	Jul	
								Total*	LT Average
Blackheath Upper	0.0	0.0	0.0	0.0	0.0	0.0	0.0	0.0	78.8
Brooklands	0.0	0.0	0.0	0.0	0.0	0.0	0.0	0.0	132.9
Newlands	0.0	0.0	0.0	0.0	0.0	0.0	0.0	0.0	289.5
Steenbras	0.0	0.0	0.0	0.0	0.0	0.0	0.0	0.0	157.8
Table Mountain (Woodhead)	0.0	0.0	0.0	0.0	0.0	0.0	0.0	0.0	244.5
Theewaterskloof	0.0	0.0	0.0	0.0	0.0	0.0	0.0	0.0	74.2
Tygerberg	0.0	0.0	0.0	0.0	0.0	0.0	0.0	0.0	93.3
Voëlvlei	0.0	0.0	0.0	0.0	0.0	0.0	0.0	0.0	101.1
Wemmershoek	0.0	0.0	0.0	0.0	0.0	0.0	0.0	0.0	172.8
Wynberg	0.0	0.0	0.0	0.0	0.0	0.0	0.0	0.0	186.4

Notes: \*Total/cummulative rainfall for month indicated above  
LT: Long Term

## Accumulated Monthly Rainfall at Wemmershoek

Note: Wemmershoek station used due to long record and mountainous location



## Drinking Water Quality

### SAMPLE PASS RATE

Month	Water Quality Compliance (%)	Target (%)
Nov-21	99.11	98
Dec-21	99.09	98
Jan-22	99.04	98
Feb-22	99.04	98
Mar-22	98.99	98
Apr-22	98.96	98
May-22	98.90	98
Jun-22	98.96	98
Jul-22	99.46	99
Aug-22	99.47	99
Sep-22	99.46	98.50
Oct-22	99.47	98.50
Nov-22	99.45	98.50
Dec-22	99.36	98.50
Jan-23	99.36	98.50
Feb-23	99.35	98.50
Mar-23	99.29	98.50
Apr-23	99.24	98.50
May-23	99.24	98.50
Jun-23	99.18	98.50
Jul-23	99.19	98.50
Aug-23	99.14	98.50
Sep-23	99.10	98.50
Oct-23	99.10	98.50
Nov-23	99.04	98.50
Dec-23	99.15	98.50
Jan-24	99.16	98.50
Feb-24	99.12	98.50
Mar-24	99.16	98.50
Apr-24	99.20	98.50
May-24	99.21	98.50

This table shows CCT drinking water quality compliance according to the South African National Standard 241:2015. Compliance, measured against all prescribed chemical and microbiological components, consistently exceeds the very high CCT target of 98.5%. (Overall compliance percentages of continuous sampling and analysis are released on a monthly basis.