



Headline Statistics

WCWSS DAM STORAGE (%)

68.5

WEEKLY DAM LEVEL CHANGE (%)

2.10

AVERAGE TOTAL DAILY WATER USE (MLD)

850

Water Resource Status

WATER RESOURCE STATUS	MEANING OF CURRENT STATUS
Wise Water Use	<p>Although early winter rains have been above average, the City will continue to monitor these levels. It is important to continue using water wisely.</p> <p>Note: The Water Resource status is updated every three (3) months. It will next be updated in August.</p>

Water Production from Different Sources

MAJOR DAMS (MLD)

844

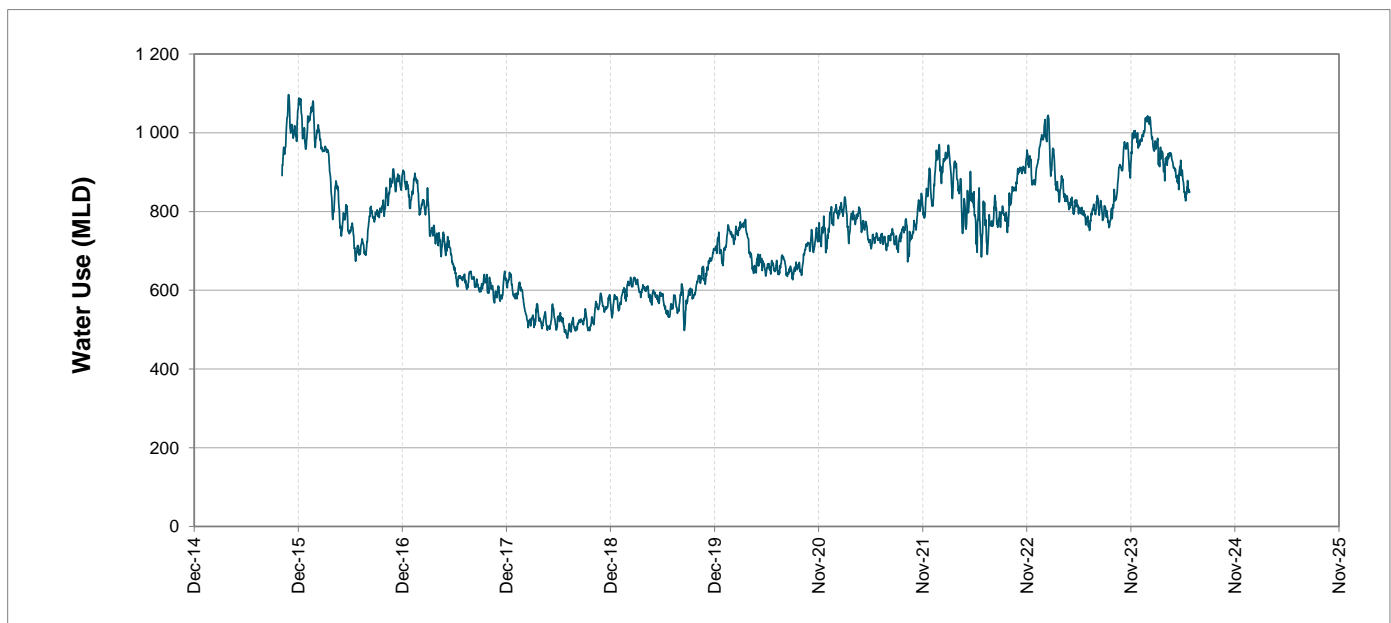
MINOR DAMS (MLD)

6

GROUND WATER AND SPRINGS (MLD)

0

Overall Water Usage Trend (2010 - Present)



WCWSS means Western Cape Water Supply System

MLD means million litres per day

More information on Water Saving and Restrictions is available on the City of Cape Town's 'ThinkWater' website

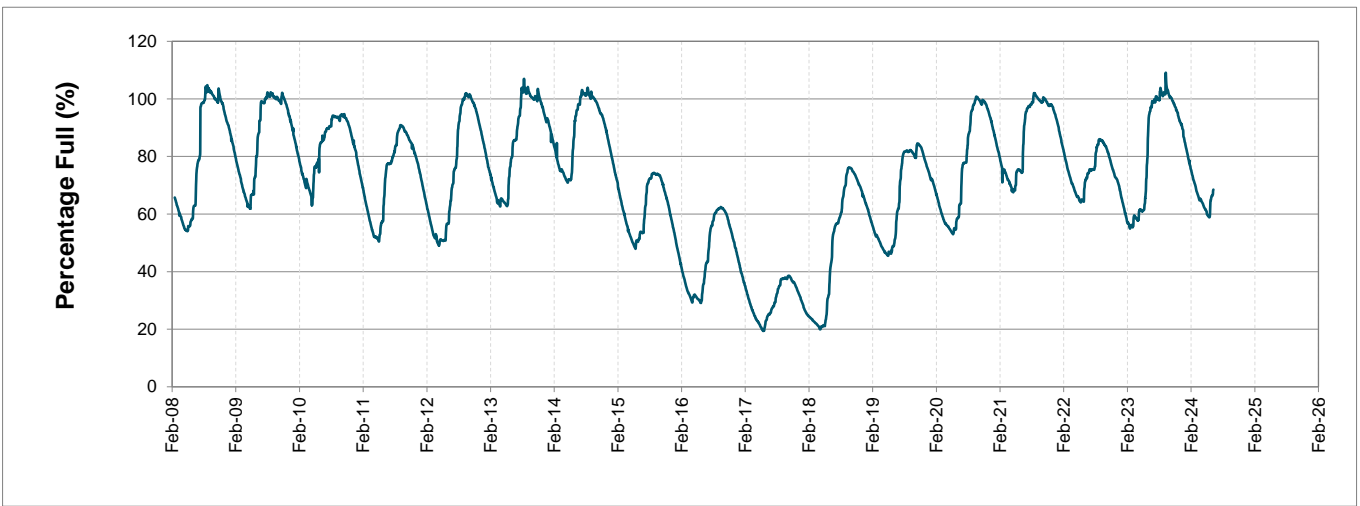
Water Stored in Major Dams (WCWSS)

Overall Percentage Full **68.5%**

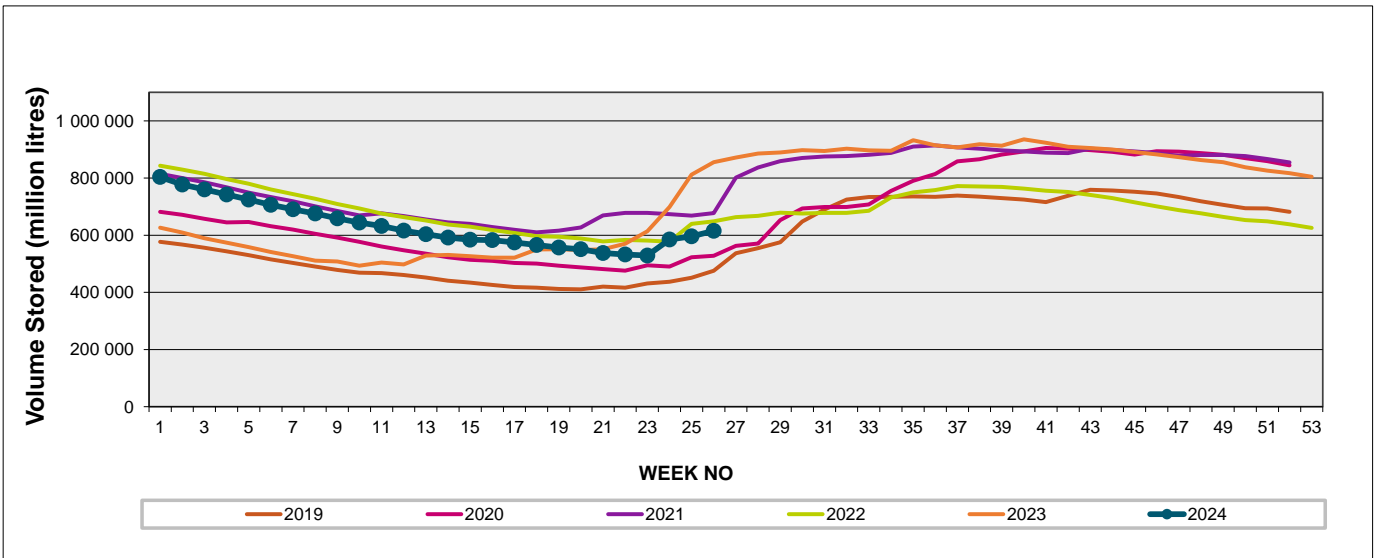
Weekly Change **2.1%**

MAJOR DAMS (WCWSS)	STORAGE						
	CAPACITY	%	%	%	%	%	%
	MI	24 June 2024	Previous week	2023	2022	2021	2020
BERG RIVER	130 010	87.8	82.6	100.9	82.5	89.3	74.6
STEENBRAS LOWER	33 517	71.8	69.3	101.0	79.2	59.6	49.6
STEENBRAS UPPER	31 767	90.3	89.4	97.9	88.3	59.1	99.7
THEEWATERSKLOOF	480 188	64.0	62.8	101.3	73.7	79.6	55.8
VOËLVLEI	164 095	59.2	57.0	67.5	60.1	60.3	54.6
WEMMERSHOEK	58 644	74.6	71.5	100.0	56.5	59.9	43.1
TOTAL STORED	898 221	615 145	596 067	851 874	647 622	670 970	527 918
% STORAGE		68.5%	66.4%	94.8%	72.1%	74.7%	58.8%

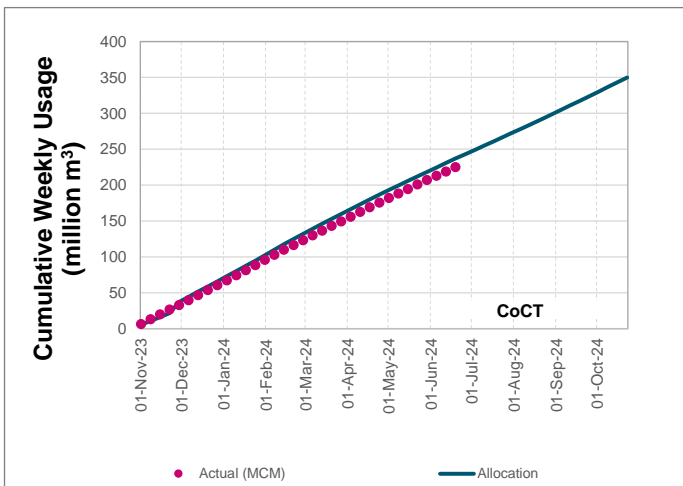
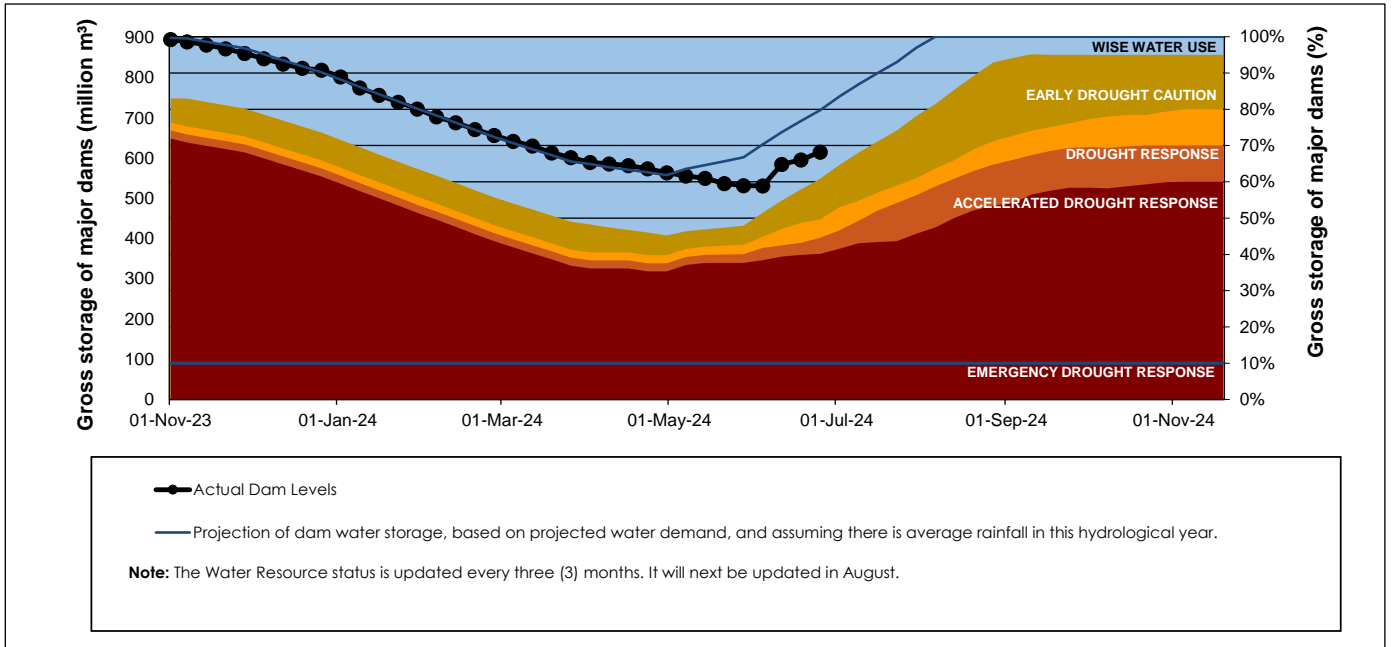
WCWSS Storage Record (2008 - Present)



WCWSS Comparative Storage Graph



Projected WCWSS Dam Storage Levels



Water Stored in Minor Dams

Overall Percentage Full **59.7**

Weekly Change **3.10**

MINOR DAMS	STORAGE						
	CAPACITY	%	%	%	%	%	%
	MI	24 June 2024	Previous week	2023	2022	2021	2020
ALEXANDRA (Table Mountain)	126	51.5	46.3	100.0	74.1	13.3	49.8
DE VILLIERS (Table Mountain)	243	100.3	100.0	101.6	99.5	65.7	100.0
HELY-HUTCHINSON (Table Mount)	925	32.7	23.7	101.2	100.3	60.2	69.1
KLEINPLAATS (Simon's Town)	1 368	42.4	42.4	62.2	40.0	44.9	36.2
LAND-EN-ZEEZICHT (Helderberg)	451	99.4	99.4	99.4	80.9	66.8	67.8
LEWIS GAY (Simon's Town)	182	62.6	50.7	100.9	66.5	57.9	40.4
VICTORIA (Table Mountain)	128	100.8	99.6	101.5	100.0	23.0	101.9
WOODHEAD (Table Mountain)	954	77.9	75.4	100.3	67.2	70.6	99.9
Total Stored	4 377	2614.2	2478.6	3853.5	3053.0	2433.6	2892.1
Percentages stored		59.7	56.6	88.0	69.8	55.6	66.1

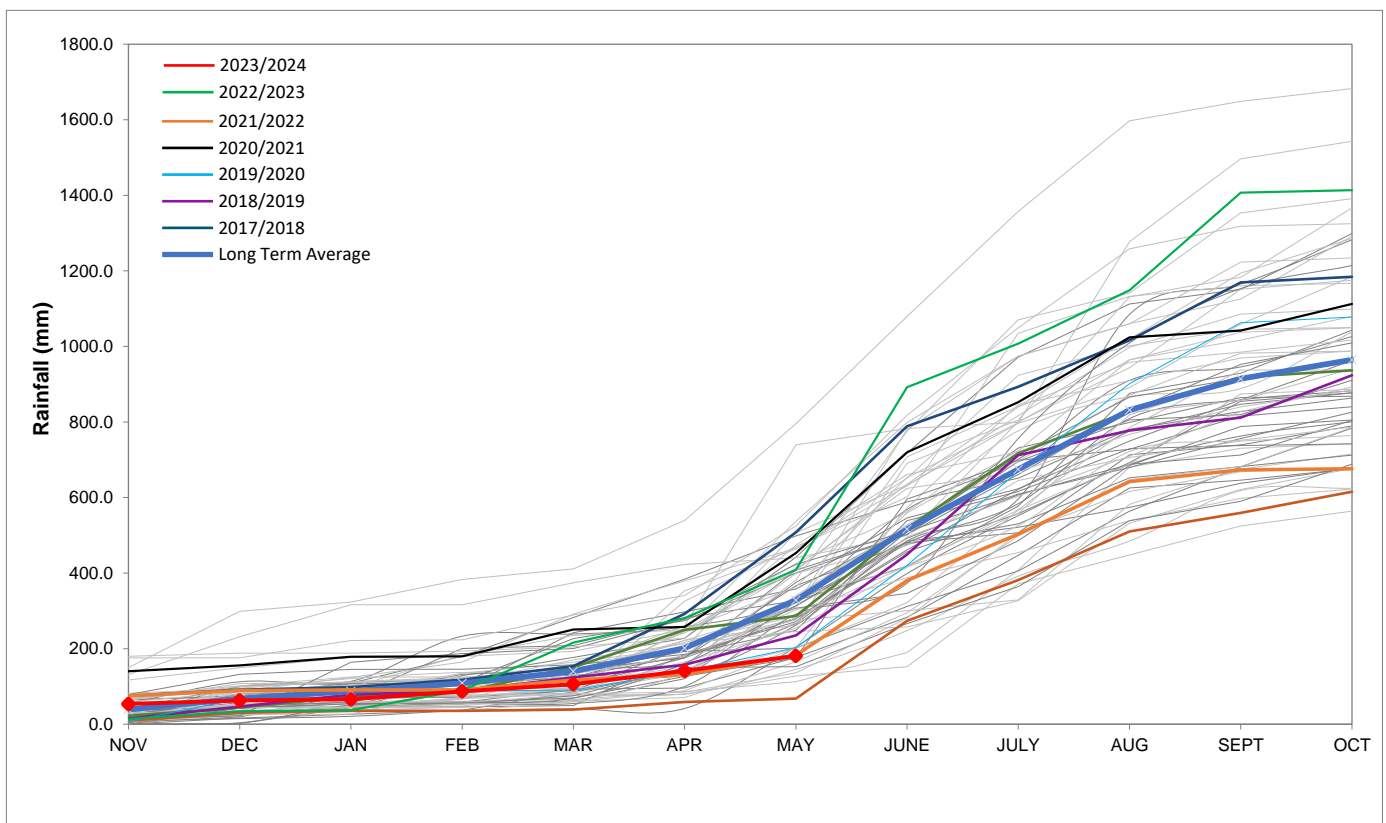
Rainfall Recorded

RAINFALL (mm)	17-Jun	18-Jun	19-Jun	20-Jun	21-Jun	22-Jun	23-Jun	Jun	
								Total*	LT Average
Blackheath Upper	0.0	10.0	0.0	0.0	5.0	0.0	0.0	68.1	73.3
Brooklands	0.0	20.0	0.0	0.0	5.0	3.0	1.0	107.5	138.7
Newlands	4.0	37.0	2.5	0.0	30.0	0.0	0.0	305.5	291.0
Steenbras	0.0	23.5	0.0	0.0	6.5	0.0	0.0	202.3	156.0
Table Mountain (Woodhead)	4.0	25.5	0.0	0.0	15.5	0.0	0.0	192.5	240.5
Theewaterskloof	0.0	3.9	0.0	0.0	10.0	0.0	0.0	70.3	72.3
Tygerberg	0.0	6.3	0.0	0.0	8.4	0.0	0.0	67.9	93.8
Voëlvlei	0.3	14.0	0.5	0.0	11.0	0.2	0.0	151.2	115.6
Wemmershoek	4.6	18.7	0.0	0.0	20.0	0.0	0.0	163.9	189.6
Wynberg	0.0	26.0	0.0	0.0	19.1	0.0	0.0	117.7	175.2

Notes: *Total/cummulative rainfall for month indicated above
LT: Long Term

Accumulated Monthly Rainfall at Wemmershoek

Note: Wemmershoek station used due to long record and mountainous location



Drinking Water Quality

SAMPLE PASS RATE

Month	Water Quality Compliance (%)	Target (%)
Nov-21	99.11	98
Dec-21	99.09	98
Jan-22	99.04	98
Feb-22	99.04	98
Mar-22	98.99	98
Apr-22	98.96	98
May-22	98.90	98
Jun-22	98.96	98
Jul-22	99.46	99
Aug-22	99.47	99
Sep-22	99.46	98.50
Oct-22	99.47	98.50
Nov-22	99.45	98.50
Dec-22	99.36	98.50
Jan-23	99.36	98.50
Feb-23	99.35	98.50
Mar-23	99.29	98.50
Apr-23	99.24	98.50
May-23	99.24	98.50
Jun-23	99.18	98.50
Jul-23	99.19	98.50
Aug-23	99.14	98.50
Sep-23	99.10	98.50
Oct-23	99.10	98.50
Nov-23	99.04	98.50
Dec-23	99.15	98.50
Jan-24	99.16	98.50
Feb-24	99.12	98.50
Mar-24	99.16	98.50
Apr-24	99.20	98.50
May-24	99.21	98.50

This table shows CCT drinking water quality compliance according to the South African National Standard 241:2015. Compliance, measured against all prescribed chemical and microbiological components, consistently exceeds the very high CCT target of 98.5%. (Overall compliance percentages of continuous sampling and analysis are released on a monthly basis.