



Headline Statistics

<p>WCWSS DAM STORAGE (%)</p> <p>66.3</p>	<p>WEEKLY DAM LEVEL CHANGE (%)</p> <p>0.80</p>	<p>AVERAGE TOTAL DAILY WATER USE (MLD)</p> <p>859</p>
---	---	--

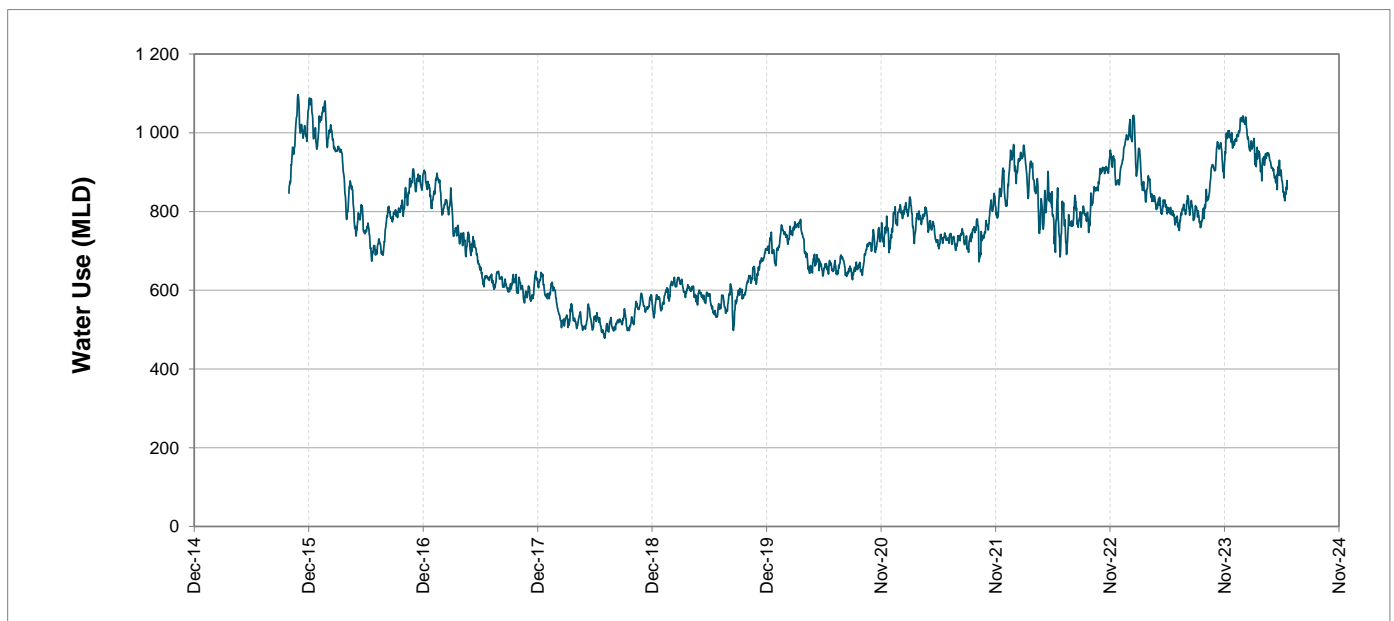
Water Resource Status

WATER RESOURCE STATUS	MEANING OF CURRENT STATUS
Wise Water Use	<p>Although early winter rains have been above average, the City will continue to monitor these levels. It is important to continue using water wisely.</p> <p>Note: The Water Resource status is updated every three (3) months. It will next be updated in August.</p>

Water Production from Different Sources

<p>MAJOR DAMS (MLD)</p> <p>853</p>	<p>MINOR DAMS (MLD)</p> <p>6</p>	<p>GROUND WATER AND SPRINGS (MLD)</p> <p>0</p>
---	---	---

Overall Water Usage Trend (2010 - Present)



WCWSS means Western Cape Water Supply System

MLD means million litres per day

More information on Water Saving and Restrictions is available on the City of Cape Town's 'ThinkWater' website

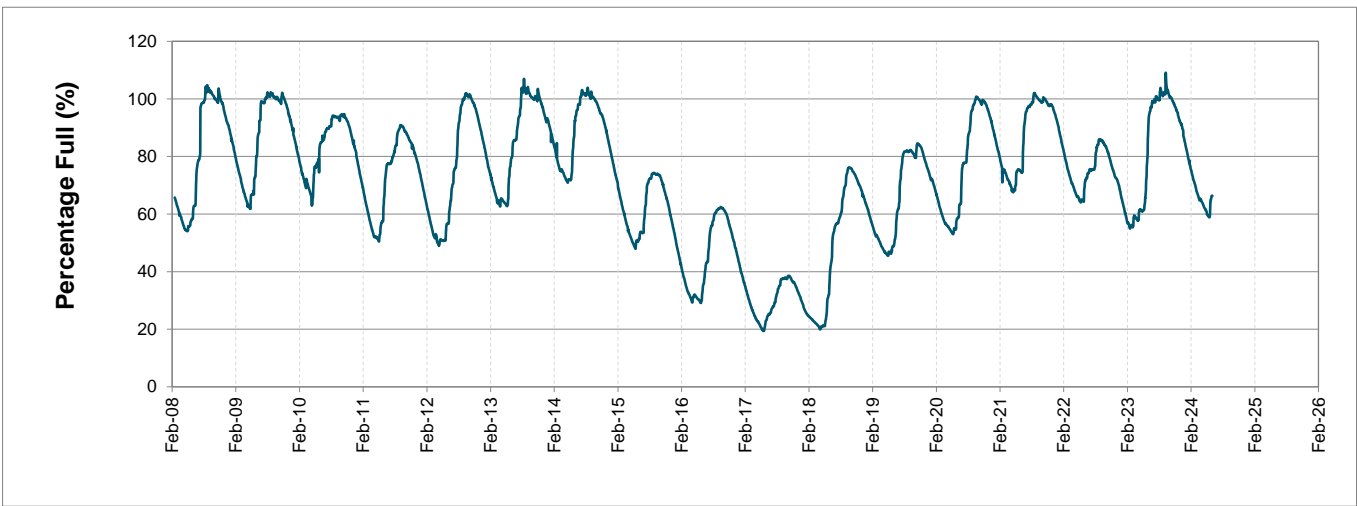
Water Stored in Major Dams (WCWSS)

Overall Percentage Full **66.3%**

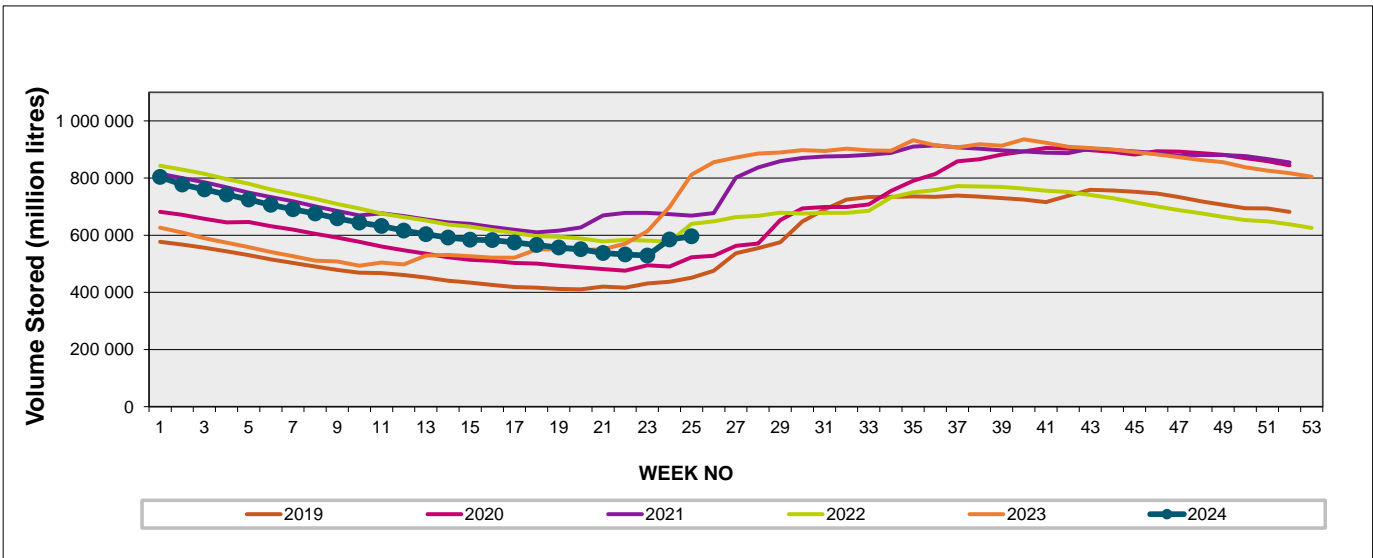
Weekly Change **0.8%**

MAJOR DAMS (WCWSS)	STORAGE						
	CAPACITY	%	%	%	%	%	%
	MI	18 June 2024	Previous week	2023	2022	2021	2020
BERG RIVER	130 010	82.6	82.3	102.8	79.8	86.6	74.0
STEENBRAS LOWER	33 517	69.4	69.4	103.0	76.3	59.3	50.4
STEENBRAS UPPER	31 767	88.5	87.5	102.5	91.6	58.8	99.4
THEEWATERSKLOOF	480 188	62.7	62.0	94.4	71.0	80.1	55.3
VOËLVLEI	164 095	57.1	55.5	60.8	57.4	60.8	54.2
WEMMERSHOEK	58 644	71.5	70.6	98.9	53.9	60.1	43.5
TOTAL STORED	898 221	595 516	588 175	811 761	625 342	670 874	524 783
% STORAGE		66.3%	65.5%	90.4%	69.6%	74.7%	58.4%

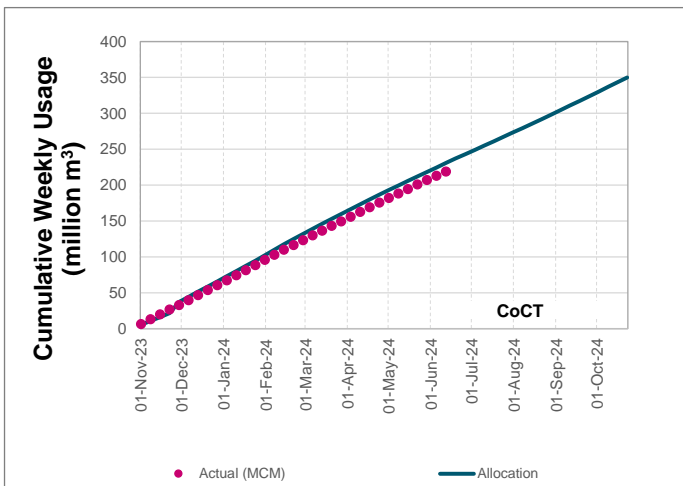
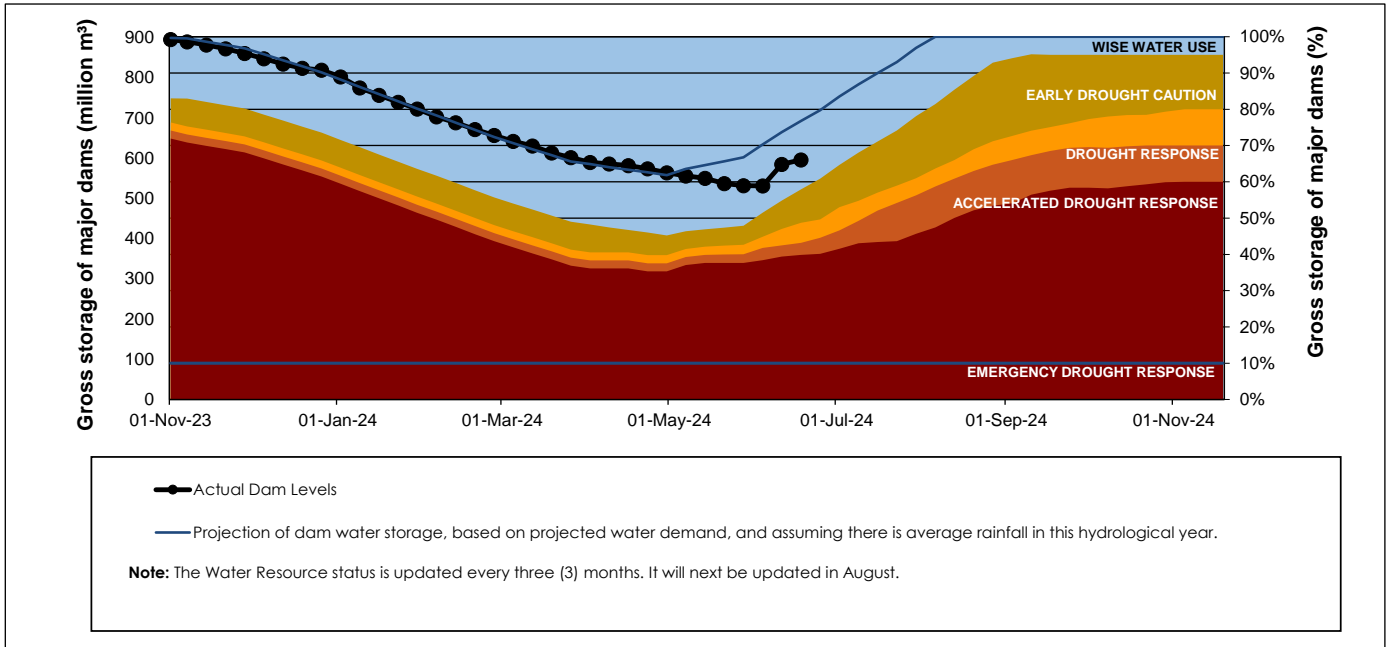
WCWSS Storage Record (2008 - Present)



WCWSS Comparative Storage Graph



Projected WCWSS Dam Storage Levels



Water Stored in Minor Dams

Overall Percentage Full **56.7**

Weekly Change **0.77**

MINOR DAMS	STORAGE						
	CAPACITY	%	%	%	%	%	%
	MI	18 June 2024	Previous week	2023	2022	2021	2020
ALEXANDRA (Table Mountain)	126	46.3	47.2	99.3	71.9	11.4	47.0
DE VILLIERS (Table Mountain)	243	100.0	100.5	101.6	80.0	64.6	101.9
HELY-HUTCHINSON (Table Mount)	925	23.7	22.6	103.9	98.0	50.6	62.8
KLEINPLAATS (Simon's Town)	1 368	42.4	41.8	54.9	35.4	45.5	36.2
LAND-EN-ZEEZICHT (Helderberg)	451	99.4	99.4	99.4	80.0	64.8	66.3
LEWIS GAY (Simon's Town)	182	51.9	41.4	100.9	49.4	64.5	35.1
VICTORIA (Table Mountain)	128	99.6	100.4	104.6	92.7	17.8	100.4
WOODHEAD (Table Mountain)	954	75.4	75.3	101.0	66.9	68.5	99.8
Total Stored	4 377	2480.7	2447.0	3793.0	2876.0	2322.9	2815.8
Percentages stored		56.7	55.9	86.7	65.7	53.1	64.3

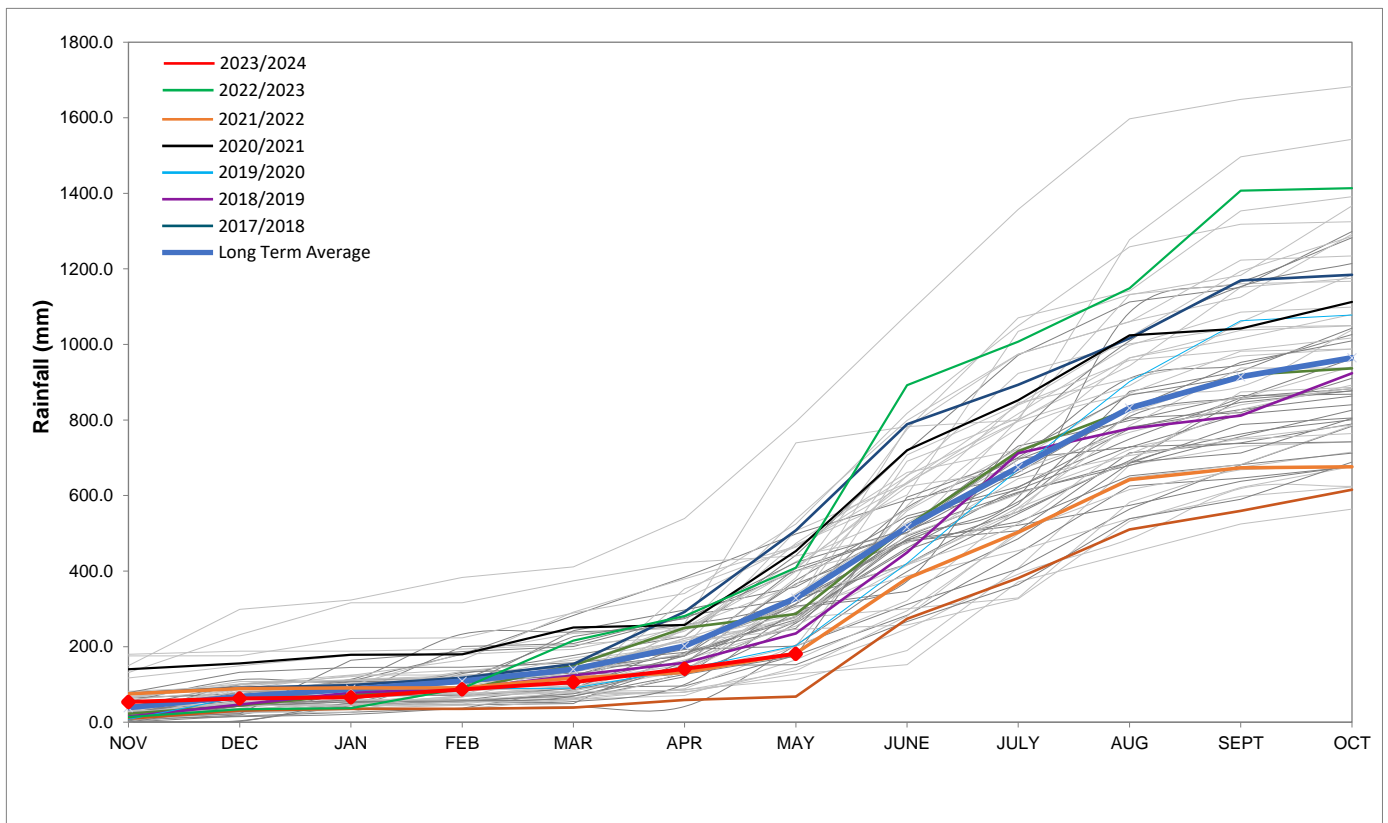
Rainfall Recorded

RAINFALL (mm)	11-Jun	12-Jun	13-Jun	14-Jun	15-Jun	16-Jun	17-Jun	Jun	
								Total*	LT Average
Blackheath Upper	4.0	0.0	0.0	0.0	0.0	0.0	0.0	53.1	73.3
Brooklands	3.5	0.0	0.0	0.0	0.0	0.0	0.0	78.5	138.7
Newlands	9.0	1.7	0.0	0.0	0.0	0.0	4.0	236.0	291.0
Steenbras	1.5	0.0	0.0	0.0	0.0	0.0	0.0	172.3	156.0
Table Mountain (Woodhead)	4.0	0.0	0.0	0.0	0.0	0.0	4.0	151.5	240.5
Theewaterskloof	2.4	0.0	0.0	0.0	0.0	0.0	0.0	56.4	72.3
Tygerberg	5.9	0.0	0.0	0.0	0.0	0.0	0.0	53.2	93.8
Voëlvei	12.0	0.2	0.0	0.0	0.0	0.0	0.3	125.5	115.6
Wemmershoek	14.9	0.9	0.0	0.0	0.0	0.0	4.6	125.2	189.6
Wynberg	3.1	0.0	0.0	0.0	0.0	0.0	0.0	72.6	175.2

Notes: *Total/cummulative rainfall for month indicated above
LT: Long Term

Accumulated Monthly Rainfall at Wemmershoek

Note: Wemmershoek station used due to long record and mountainous location



Drinking Water Quality

SAMPLE PASS RATE

Month	Water Quality Compliance (%)	Target (%)
Nov-21	99.11	98
Dec-21	99.09	98
Jan-22	99.04	98
Feb-22	99.04	98
Mar-22	98.99	98
Apr-22	98.96	98
May-22	98.90	98
Jun-22	98.96	98
Jul-22	99.46	99
Aug-22	99.47	99
Sep-22	99.46	98.50
Oct-22	99.47	98.50
Nov-22	99.45	98.50
Dec-22	99.36	98.50
Jan-23	99.36	98.50
Feb-23	99.35	98.50
Mar-23	99.29	98.50
Apr-23	99.24	98.50
May-23	99.24	98.50
Jun-23	99.18	98.50
Jul-23	99.19	98.50
Aug-23	99.14	98.50
Sep-23	99.10	98.50
Oct-23	99.10	98.50
Nov-23	99.04	98.50
Dec-23	99.15	98.50
Jan-24	99.16	98.50
Feb-24	99.12	98.50
Mar-24	99.16	98.50
Apr-24	99.20	98.50
May-24	99.21	98.50

This table shows CCT drinking water quality compliance according to the South African National Standard 241:2015. Compliance, measured against all prescribed chemical and microbiological components, consistently exceeds the very high CCT target of 98.5%. (Overall compliance percentages of continuous sampling and analysis are released on a monthly basis.