



Headline Statistics

<p>WCWSS DAM STORAGE (%)</p> <p><b>59.9</b></p>	<p>WEEKLY DAM LEVEL CHANGE (%)</p> <p><b>-1.40</b></p>	<p>AVERAGE TOTAL DAILY WATER USE (MLD)</p> <p><b>908</b></p>
---	--	--

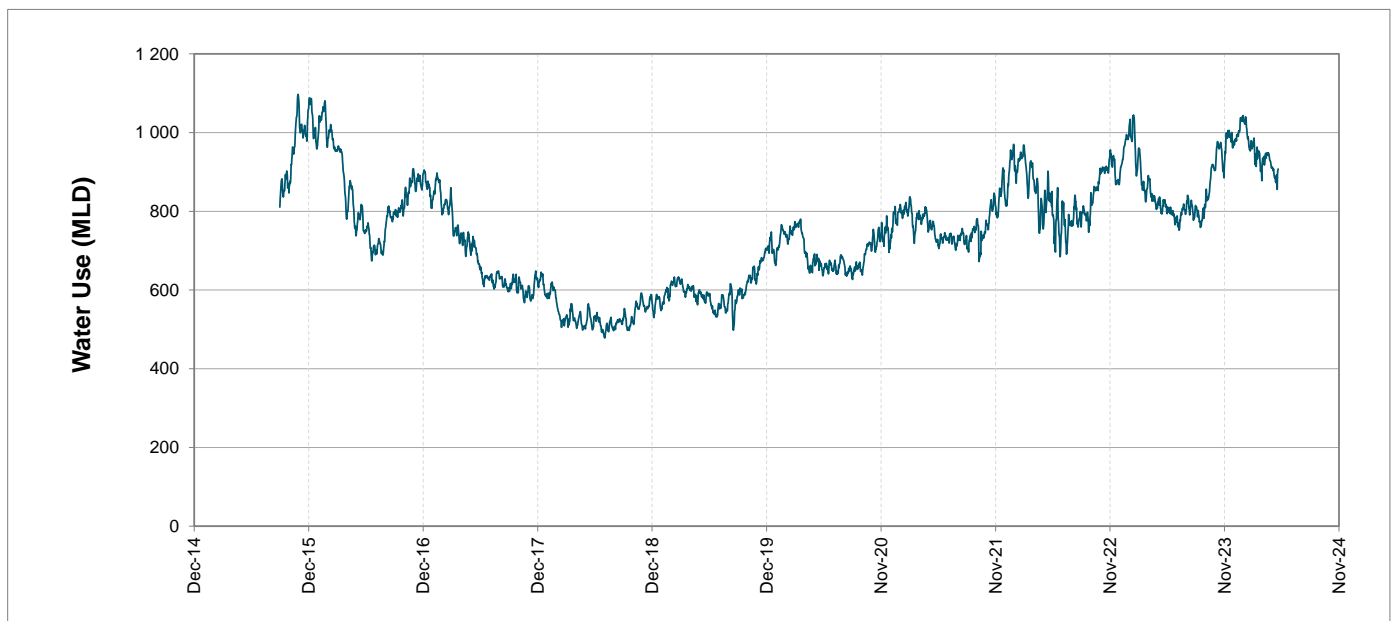
Water Resource Status

WATER RESOURCE STATUS	MEANING OF CURRENT STATUS
Wise Water Use	<p>Although early winter rains have been above average, the City will continue to monitor these levels. It is important to continue using water wisely.</p> <p><b>Note:</b> The Water Resource status is updated every three (3) months. It will next be updated in May.</p>

Water Production from Different Sources

<p>MAJOR DAMS (MLD)</p> <p><b>899</b></p>	<p>MINOR DAMS (MLD)</p> <p><b>9</b></p>	<p>GROUND WATER AND SPRINGS (MLD)</p> <p><b>0</b></p>
---	---	---

Overall Water Usage Trend (2010 - Present)



WCWSS means Western Cape Water Supply System

MLD means million litres per day

More information on Water Saving and Restrictions is available on the City of Cape Town's 'ThinkWater' website

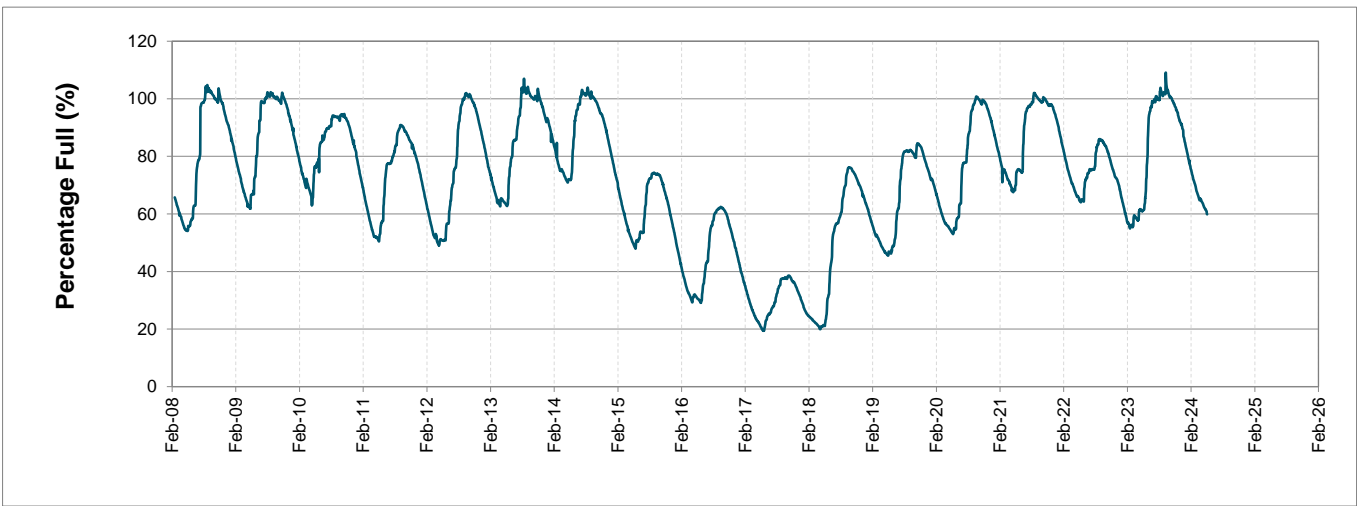
# Water Stored in Major Dams (WCWSS)

Overall Percentage Full **59.9%**

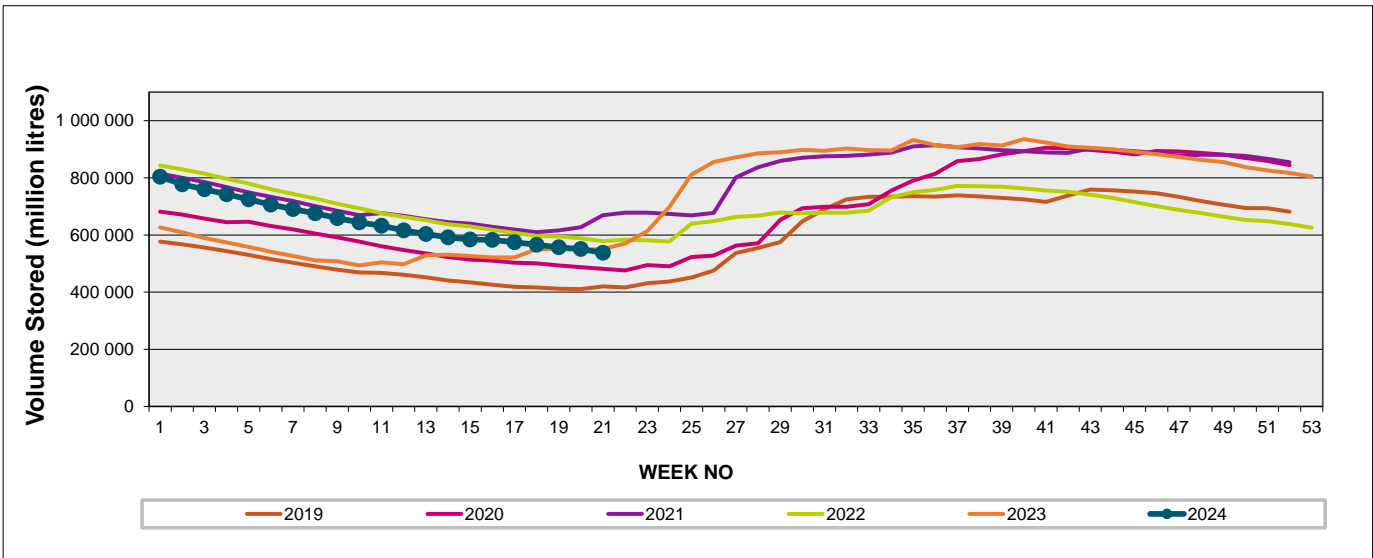
Weekly Change **-1.4%**

MAJOR DAMS (WCWSS)	STORAGE						
	CAPACITY	%	%	%	%	%	%
	MI	20 May 2024	Previous week	2023	2022	2021	2020
BERG RIVER	130 010	70.6	71.1	86.8	67.7	77.1	65.4
STEENBRAS LOWER	33 517	55.1	56.6	53.2	61.8	57.9	47.8
STEENBRAS UPPER	31 767	80.2	80.1	94.3	82.8	55.0	96.5
THEEWATERSKLOOF	480 188	58.7	60.8	58.8	66.9	75.5	50.2
VOËLVLEI	164 095	50.2	51.2	39.3	57.2	58.4	50.2
WEMMERSHOEK	58 644	63.7	64.8	71.4	50.5	58.8	42.7
<b>TOTAL STORED</b>	<b>898 221</b>	<b>537 623</b>	<b>550 821</b>	<b>549 462</b>	<b>579 859</b>	<b>630 074</b>	<b>479 902</b>
<b>% STORAGE</b>		<b>59.9%</b>	<b>61.3%</b>	<b>61.2%</b>	<b>64.6%</b>	<b>70.1%</b>	<b>53.4%</b>

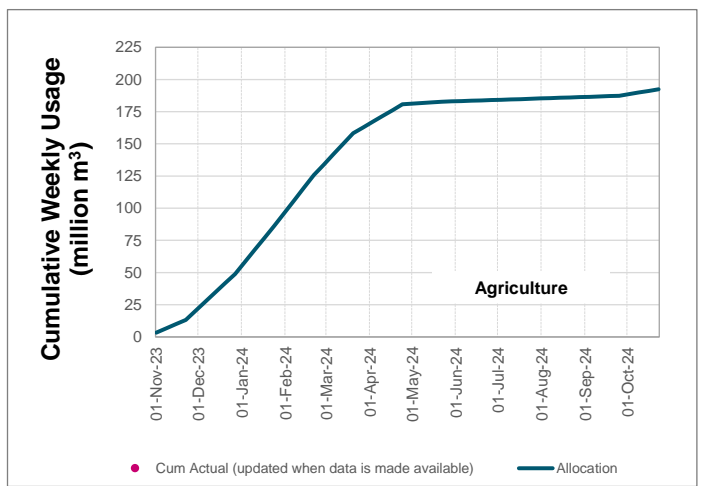
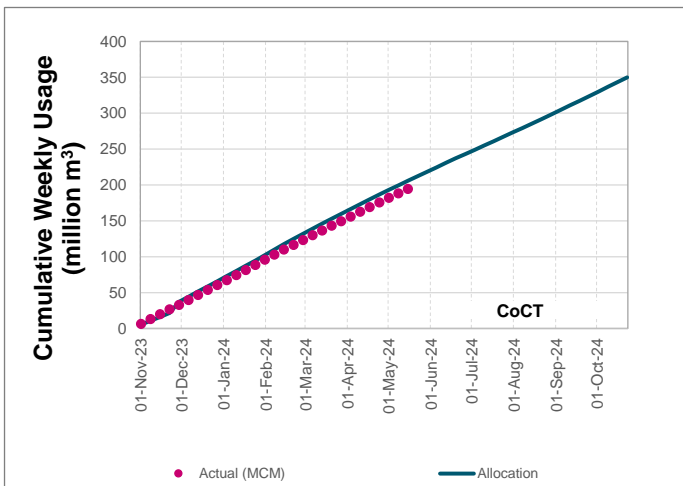
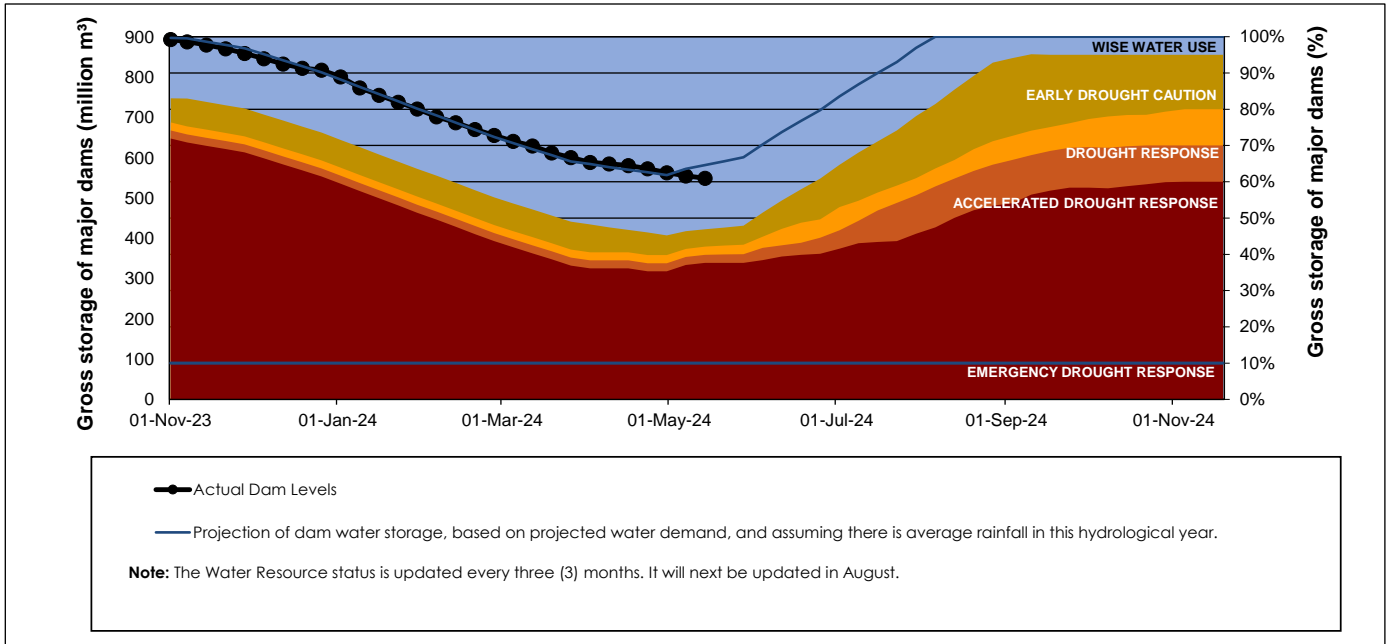
## WCWSS Storage Record (2008 - Present)



## WCWSS Comparative Storage Graph



# Projected WCWSS Dam Storage Levels



## Water Stored in Minor Dams

Overall Percentage Full **39.7**

Weekly Change **-0.78**

MINOR DAMS	STORAGE						
	CAPACITY	%	%	%	%	%	%
	MI	20 May 2024	Previous week	2023	2022	2021	2020
ALEXANDRA (Table Mountain)	126	35.2	35.8	87.9	55.0	0.0	33.3
DE VILLIERS (Table Mountain)	243	83.1	82.9	99.8	69.6	53.6	93.7
HELY-HUTCHINSON (Table Mount)	925	0.0	0.0	84.7	30.1	0.0	12.4
KLEINPLAATS (Simon's Town)	1 368	40.1	40.4	8.6	43.6	44.9	37.0
LAND-EN-ZEEZICHT (Helderberg)	451	99.4	99.4	82.9	74.0	68.8	61.8
LEWIS GAY (Simon's Town)	182	28.5	34.1	86.0	0.0	54.4	3.9
VICTORIA (Table Mountain)	128	73.7	74.3	100.4	51.5	0.0	72.4
WOODHEAD (Table Mountain)	954	37.4	39.5	68.9	62.1	66.9	98.0
<b>Total Stored</b>	<b>4 377</b>	<b>1739.9</b>	<b>1774.1</b>	<b>2579.1</b>	<b>2097.8</b>	<b>1768.8</b>	<b>2194.7</b>
<b>Percentages stored</b>		<b>39.7</b>	<b>40.5</b>	<b>58.9</b>	<b>47.9</b>	<b>40.4</b>	<b>50.1</b>

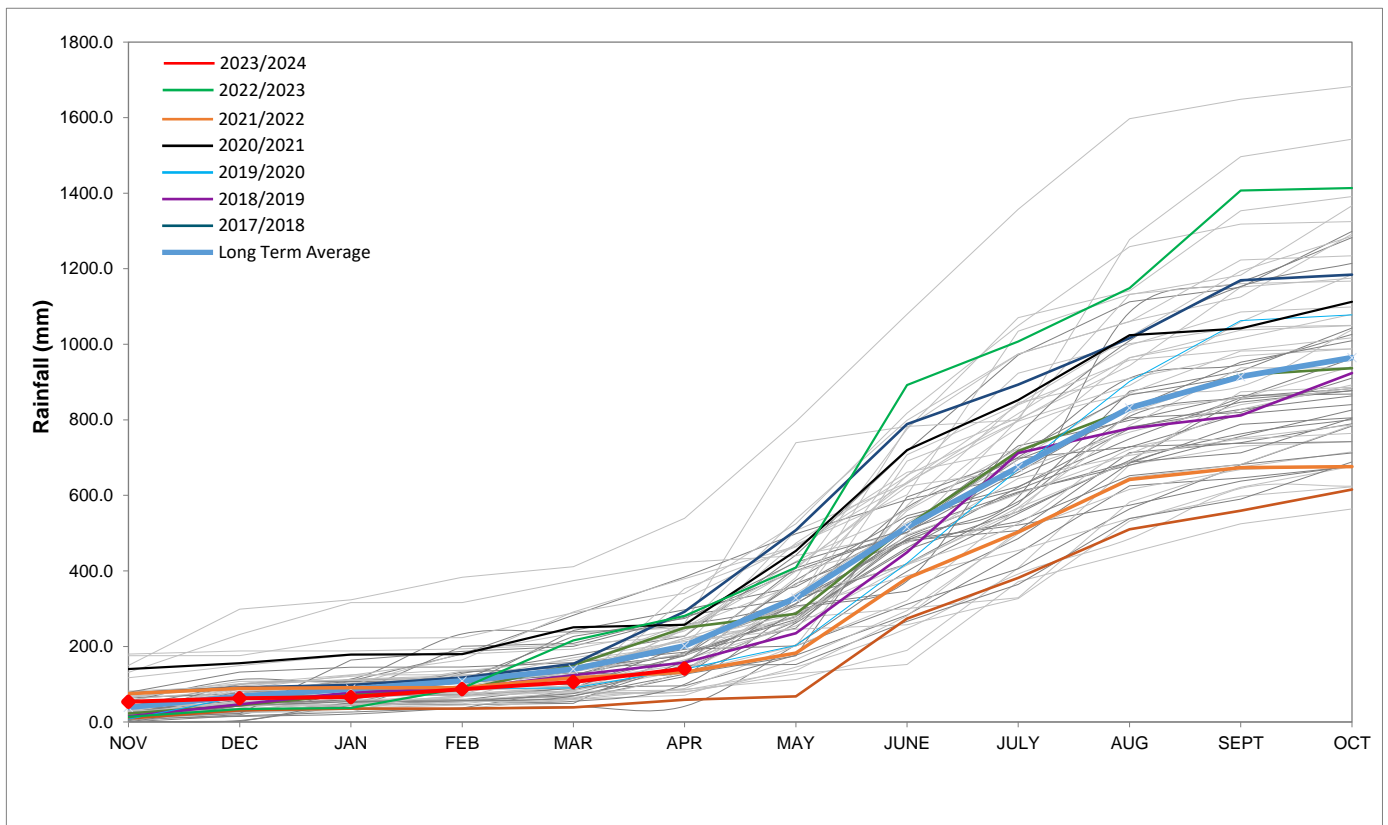
# Rainfall Recorded

RAINFALL (mm)	13-May	14-May	15-May	16-May	17-May	18-May	19-May	May	
								Total*	LT Average
Blackheath Upper	0.0	0.0	0.0	0.0	0.0	0.0	0.0	13.0	55.7
Brooklands	0.0	0.0	0.0	2.0	0.0	0.0	0.0	22.0	107.1
Newlands	0.0	0.0	0.0	0.5	0.0	0.0	0.0	67.3	210.0
Steenbras	0.0	0.0	0.0	0.6	0.0	0.0	0.0	18.7	116.9
Table Mountain (Woodhead)	0.0	0.0	0.0	2.0	0.0	0.0	0.0	50.7	188.7
Theewaterskloof	0.0	0.0	0.0	0.0	0.0	0.0	0.0	2.0	48.5
Tygerberg	0.0	0.0	0.0	0.0	0.0	0.0	0.0	15.0	60.0
Voëlvlei	0.0	0.0	0.0	0.0	0.0	0.0	0.0	16.0	69.2
Wemmershoek	0.0	0.0	0.0	0.0	0.0	0.0	0.0	25.5	120.1
Wynberg	0.0	0.0	0.0	0.0	0.0	0.0	0.0	38.3	142.8

Notes: \*Total/cummulative rainfall for month indicated above  
LT: Long Term

# Accumulated Monthly Rainfall at Wemmershoek

Note: Wemmershoek station used due to long record and mountainous location



## Drinking Water Quality

SAMPLE PASS RATE		
Month	Water Quality Compliance (%)	Target (%)
Nov-21	99.11	98
Dec-21	99.09	98
Jan-22	99.04	98
Feb-22	99.04	98
Mar-22	98.99	98
Apr-22	98.96	98
May-22	98.90	98
Jun-22	98.96	98
Jul-22	99.46	99
Aug-22	99.47	99
Sep-22	99.46	98.50
Oct-22	99.47	98.50
Nov-22	99.45	98.50
Dec-22	99.36	98.50
Jan-23	99.36	98.50
Feb-23	99.35	98.50
Mar-23	99.29	98.50
Apr-23	99.24	98.50
May-23	99.24	98.50
Jun-23	99.18	98.50
Jul-23	99.19	98.50
Aug-23	99.14	98.50
Sep-23	99.10	98.50
Oct-23	99.10	98.50
Nov-23	99.04	98.50
Dec-23	99.15	98.50
Jan-24	99.16	98.50
Feb-24	99.12	98.50
Mar-24	99.16	98.50
Apr-24	99.20	98.50

This table shows CCT drinking water quality compliance according to the South African National Standard 241:2015. Compliance, measured against all prescribed chemical and microbiological components, consistently exceeds the very high CCT target of 98.5%. (Overall compliance percentages of continuous sampling and analysis are released on a monthly basis.