



Headline Statistics

WCWSS DAM STORAGE (%)

63.1

WEEKLY DAM LEVEL CHANGE (%)

-0.90

AVERAGE TOTAL DAILY WATER USE (MLD)

912

Water Resource Status

WATER RESOURCE STATUS	MEANING OF CURRENT STATUS
Wise Water Use	<p>Although early winter rains have been above average, the City will continue to monitor these levels. It is important to continue using water wisely.</p> <p>Note: The Water Resource status is updated every three (3) months. It will next be updated in May.</p>

Water Production from Different Sources

MAJOR DAMS (MLD)

899

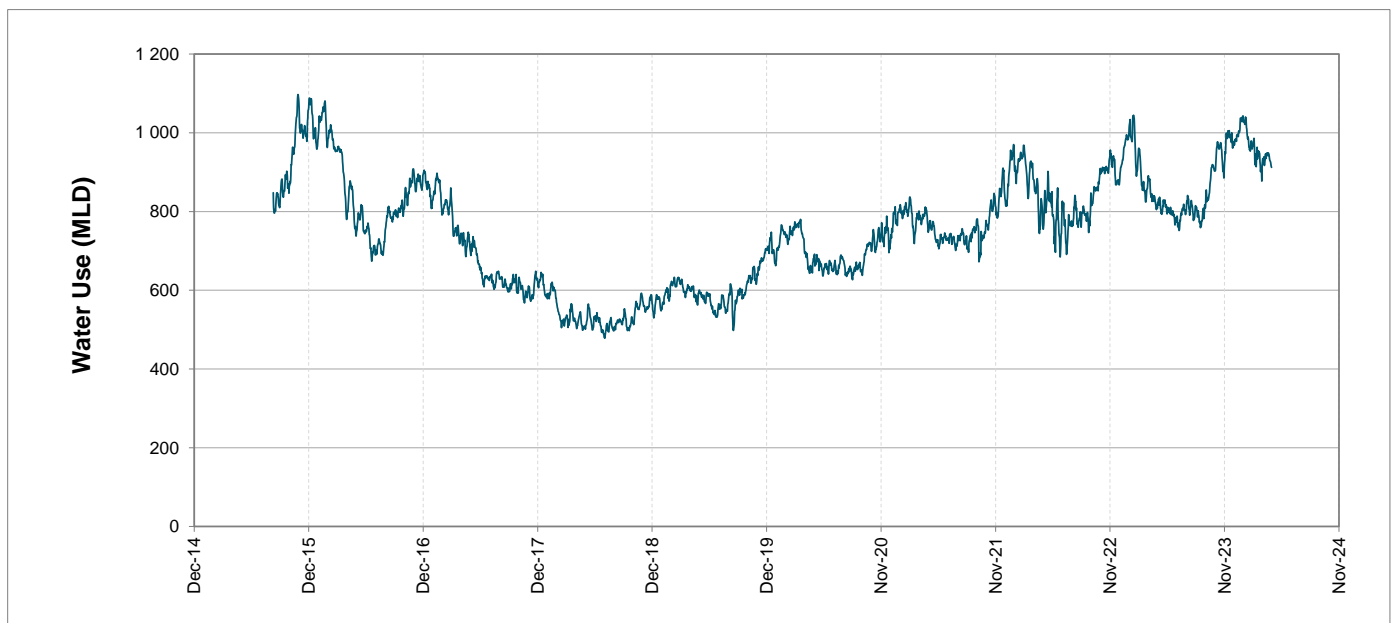
MINOR DAMS (MLD)

13

GROUND WATER AND SPRINGS (MLD)

0

Overall Water Usage Trend (2010 - Present)



WCWSS means Western Cape Water Supply System

MLD means million litres per day

More information on Water Saving and Restrictions is available on the City of Cape Town's 'ThinkWater' website

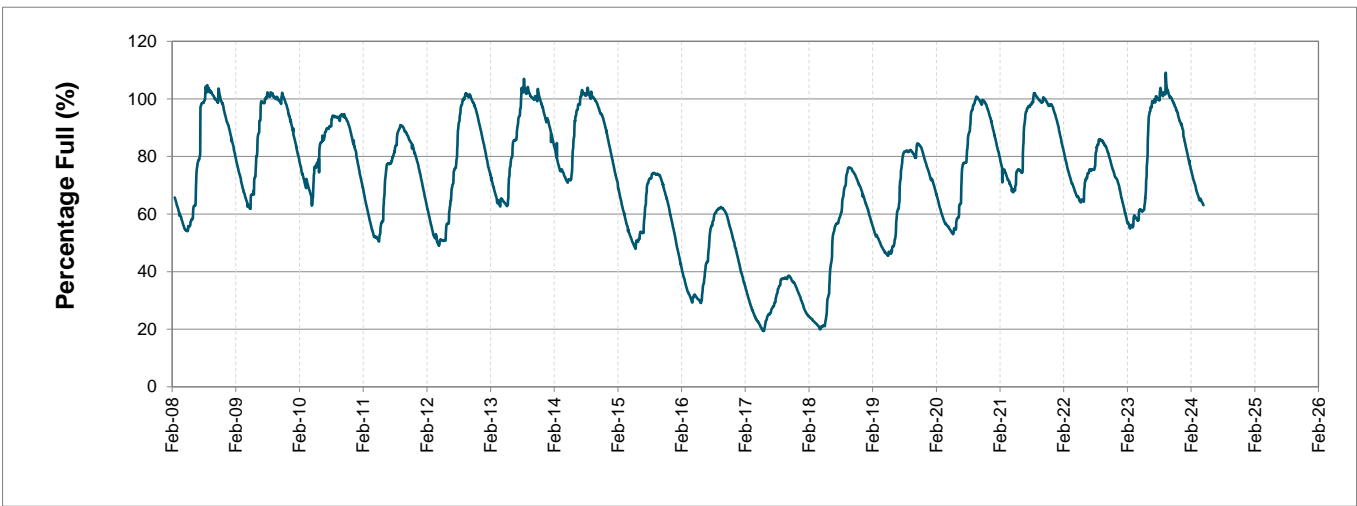
Water Stored in Major Dams (WCWSS)

Overall Percentage Full **63.1%**

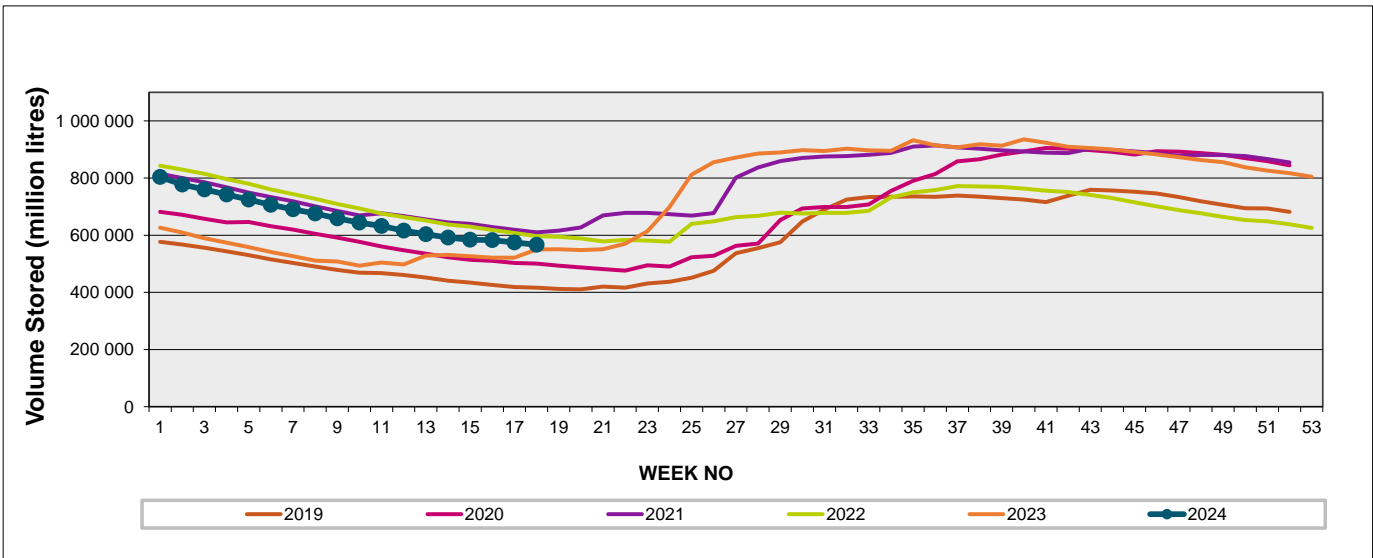
Weekly Change **-0.9%**

MAJOR DAMS (WCWSS)	STORAGE						
	CAPACITY	%	%	%	%	%	%
	MI	29 April 2024	Previous week	2023	2022	2021	2020
BERG RIVER	130 010	72.3	73.4	86.0	69.8	71.3	67.3
STEENBRAS LOWER	33 517	59.2	60.2	54.5	64.4	56.1	53.0
STEENBRAS UPPER	31 767	80.1	80.3	90.4	88.7	53.5	96.6
THEEWATERSKLOOF	480 188	62.5	63.4	59.0	69.0	73.3	51.8
VOËLVLEI	164 095	53.6	54.3	40.2	59.9	60.4	52.3
WEMMERSHOEK	58 644	66.7	67.7	73.5	54.0	61.4	48.2
TOTAL STORED	898 221	566 742	574 640	551 180	601 567	615 583	498 665
% STORAGE		63.1%	64.0%	61.4%	67.0%	68.5%	55.5%

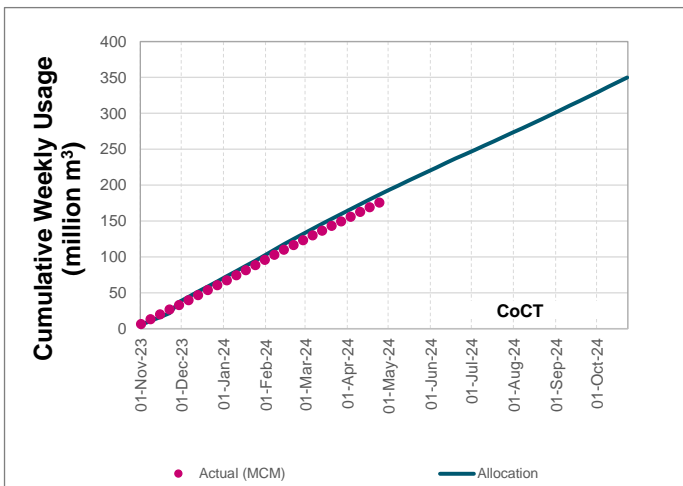
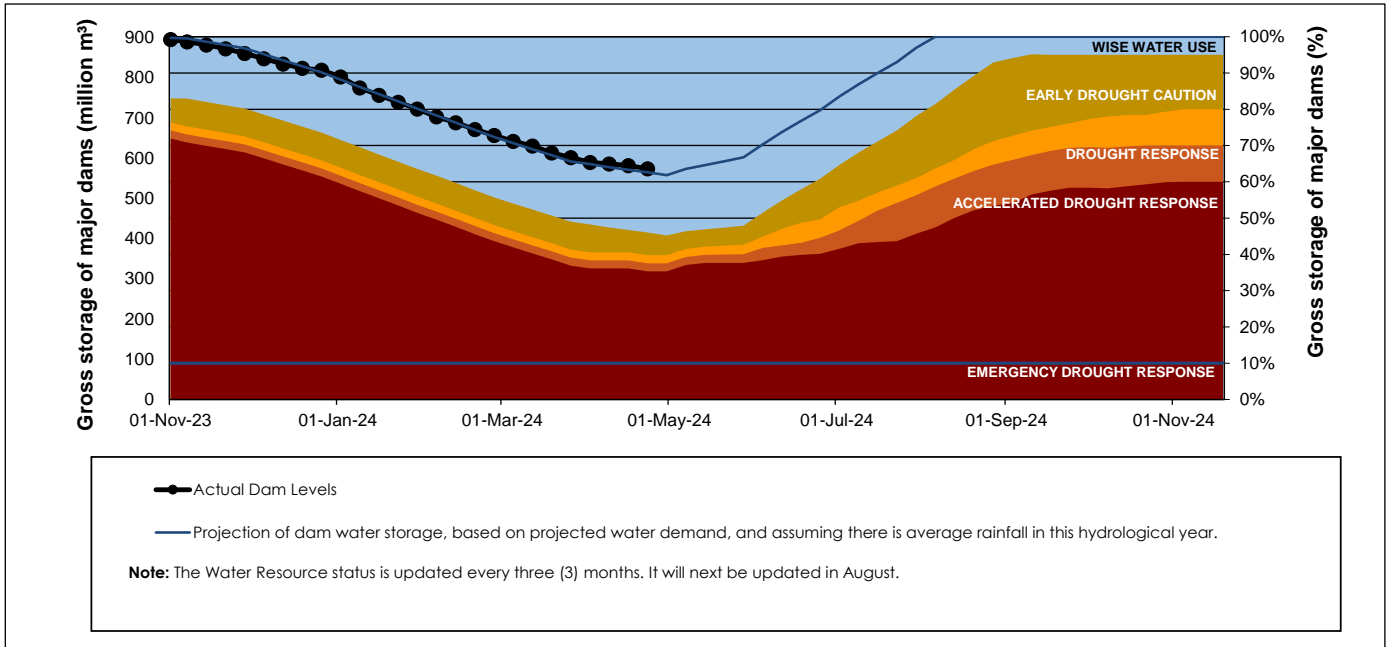
WCWSS Storage Record (2008 - Present)



WCWSS Comparative Storage Graph



Projected WCWSS Dam Storage Levels



Water Stored in Minor Dams

Overall Percentage Full **40.6**

Weekly Change **-1.74**

MINOR DAMS	STORAGE						
	CAPACITY	%	%	%	%	%	%
	MI	29 April 2024	Previous week	2023	2022	2021	2020
ALEXANDRA (Table Mountain)	126	35.3	35.8	87.5	54.9	0.0	33.7
DE VILLIERS (Table Mountain)	243	79.6	83.2	100.7	67.5	52.7	93.9
HELY-HUTCHINSON (Table Mount)	925	0.0	0.0	74.1	18.2	0.0	0.0
KLEINPLAATS (Simon's Town)	1 368	41.2	42.1	19.4	50.7	46.1	38.6
LAND-EN-ZEEZICHT (Helderberg)	451	99.4	98.8	88.9	75.3	67.8	59.0
LEWIS GAY (Simon's Town)	182	48.8	54.2	27.4	0.0	36.3	0.0
VICTORIA (Table Mountain)	128	70.4	71.1	101.9	48.7	0.0	73.7
WOODHEAD (Table Mountain)	954	37.5	42.5	78.3	71.5	74.2	97.5
Total Stored	4 377	1776.6	1853.0	2643.6	2167.0	1817.8	2080.0
Percentages stored		40.6	42.3	60.4	49.5	41.5	47.5

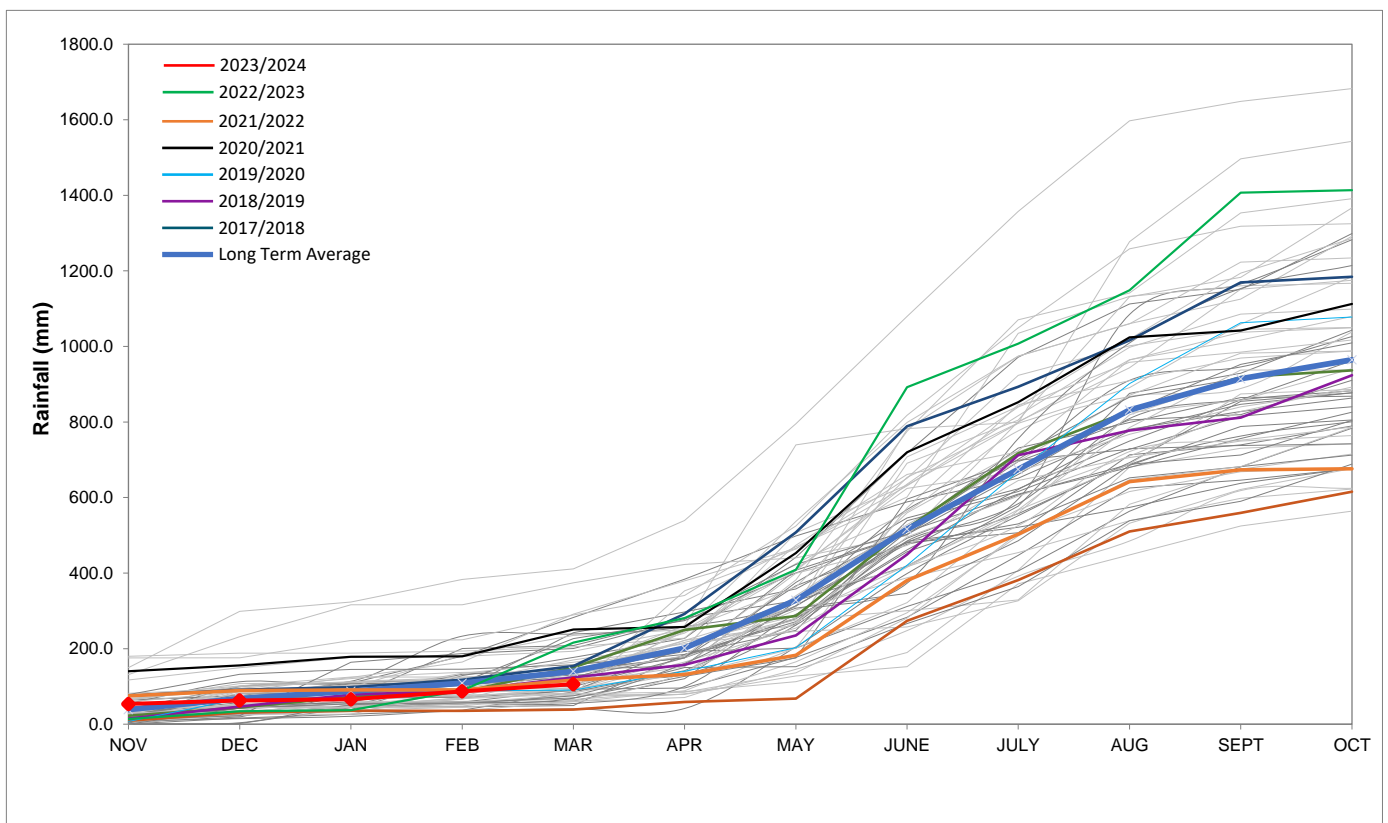
Rainfall Recorded

RAINFALL (mm)	22-Apr	23-Apr	24-Apr	25-Apr	26-Apr	27-Apr	28-Apr	Apr	
								Total*	LT Average
Blackheath Upper	0.0	0.0	0.0	0.0	0.0	0.0	0.0	23.0	36.1
Brooklands	0.0	0.0	0.0	0.0	0.0	0.0	0.0	64.0	61.9
Newlands	0.0	0.0	0.0	0.0	0.0	0.0	0.0	34.0	109.5
Steenbras	0.0	0.0	0.0	0.0	0.0	0.0	0.0	64.5	81.3
Table Mountain (Woodhead)	0.0	0.0	0.0	0.0	0.0	0.0	0.0	104.0	125.0
Theewaterskloof	0.0	0.0	0.0	0.0	0.0	0.0	0.0	88.4	53.3
Tygerberg	0.0	0.0	0.0	0.0	0.0	0.0	0.0	24.4	35.7
Voëlvlei	0.0	0.0	0.0	0.0	0.0	0.0	0.0	16.9	40.2
Wemmershoek	0.0	0.0	0.0	0.0	0.0	0.0	0.0	35.3	67.8
Wynberg	0.0	0.0	0.0	0.0	0.0	0.0	0.0	41.5	62.9

Notes: *Total/cummulative rainfall for month indicated above
LT: Long Term

Accumulated Monthly Rainfall at Wemmershoek

Note: Wemmershoek station used due to long record and mountainous location



Drinking Water Quality

SAMPLE PASS RATE		
Month	Water Quality Compliance (%)	Target (%)
Nov-21	99.11	98
Dec-21	99.09	98
Jan-22	99.04	98
Feb-22	99.04	98
Mar-22	98.99	98
Apr-22	98.96	98
May-22	98.90	98
Jun-22	98.96	98
Jul-22	99.46	99
Aug-22	99.47	99
Sep-22	99.46	98.50
Oct-22	99.47	98.50
Nov-22	99.45	98.50
Dec-22	99.36	98.50
Jan-23	99.36	98.50
Feb-23	99.35	98.50
Mar-23	99.29	98.50
Apr-23	99.24	98.50
May-23	99.24	98.50
Jun-23	99.18	98.50
Jul-23	99.19	98.50
Aug-23	99.14	98.50
Sep-23	99.10	98.50
Oct-23	99.10	98.50
Nov-23	99.04	98.50
Dec-23	99.15	98.50
Jan-24	99.16	98.50
Feb-24	99.12	98.50
Mar-24	99.16	98.50

This table shows CCT drinking water quality compliance according to the South African National Standard 241:2015. Compliance, measured against all prescribed chemical and microbiological components, consistently exceeds the very high CCT target of 98.5%. (Overall compliance percentages of continuous sampling and analysis are released on a monthly basis.