



Headline Statistics

WCWSS DAM STORAGE (%)

64.9

WEEKLY DAM LEVEL CHANGE (%)

-0.10

AVERAGE TOTAL DAILY WATER USE (MLD)

791

Water Resource Status

WATER RESOURCE STATUS	MEANING OF CURRENT STATUS
Wise Water Use	<p>Although early winter rains have been above average, the City will continue to monitor these levels. It is important to continue using water wisely.</p> <p>Note: The Water Resource status is updated every three (3) months. It will next be updated in May.</p>

Water Production from Different Sources

MAJOR DAMS (MLD)

782

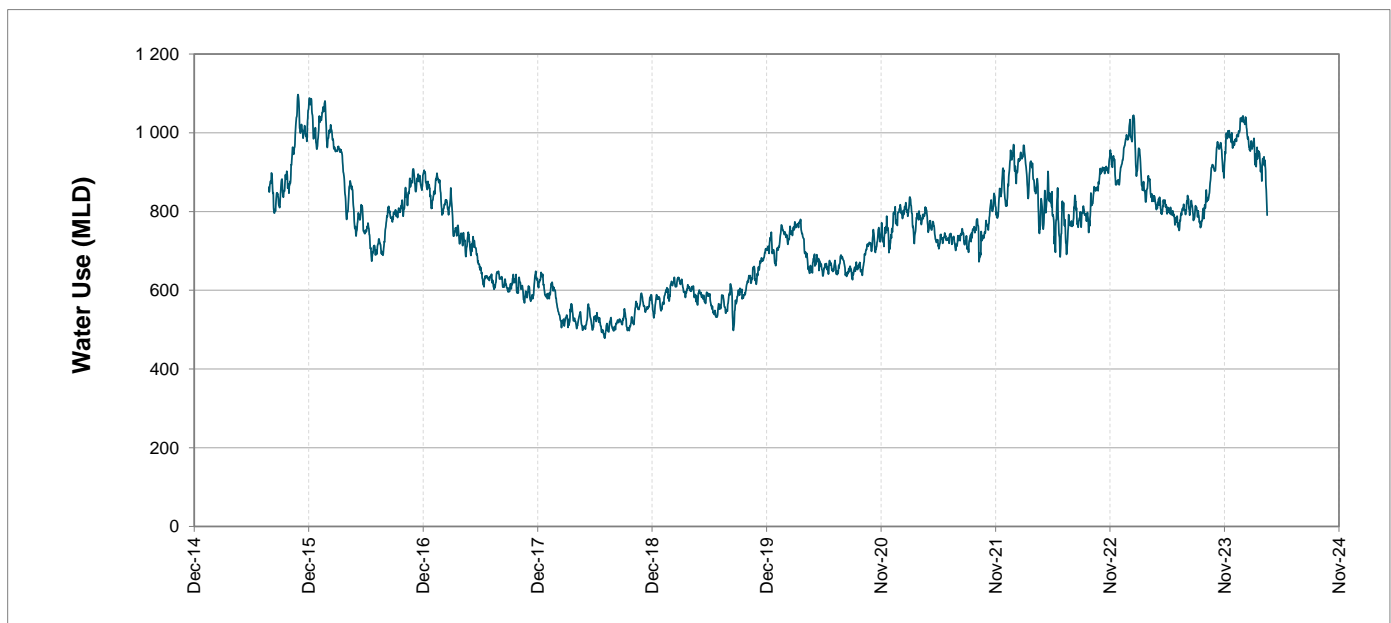
MINOR DAMS (MLD)

8

GROUND WATER AND SPRINGS (MLD)

1

Overall Water Usage Trend (2010 - Present)



WCWSS means Western Cape Water Supply System

MLD means million litres per day

More information on Water Saving and Restrictions is available on the City of Cape Town's 'ThinkWater' website

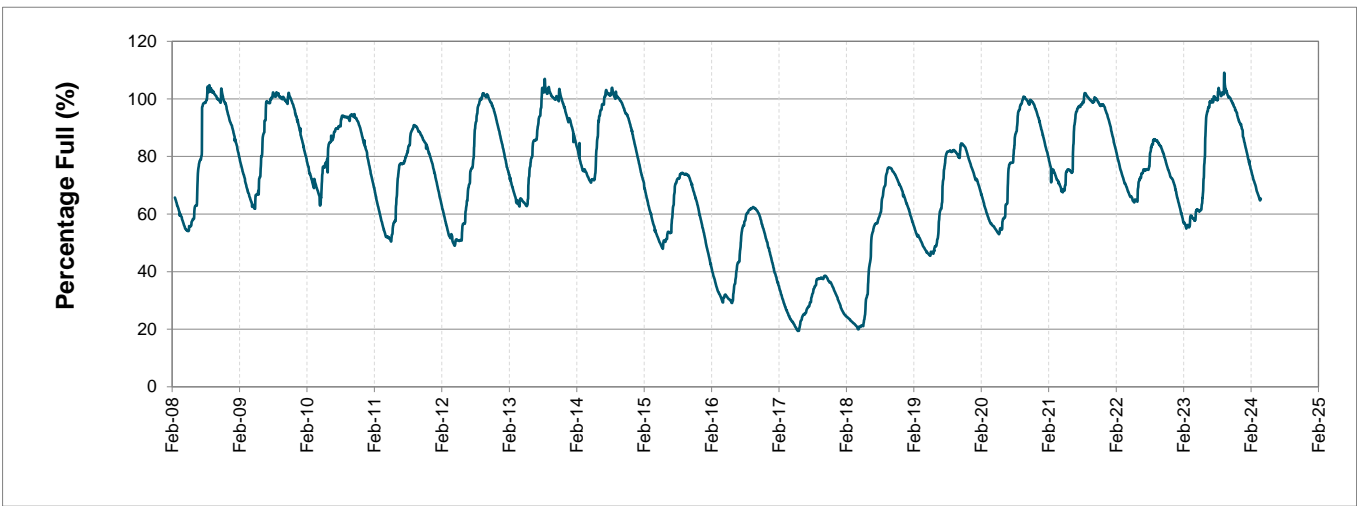
Water Stored in Major Dams (WCWSS)

Overall Percentage Full **64.9%**

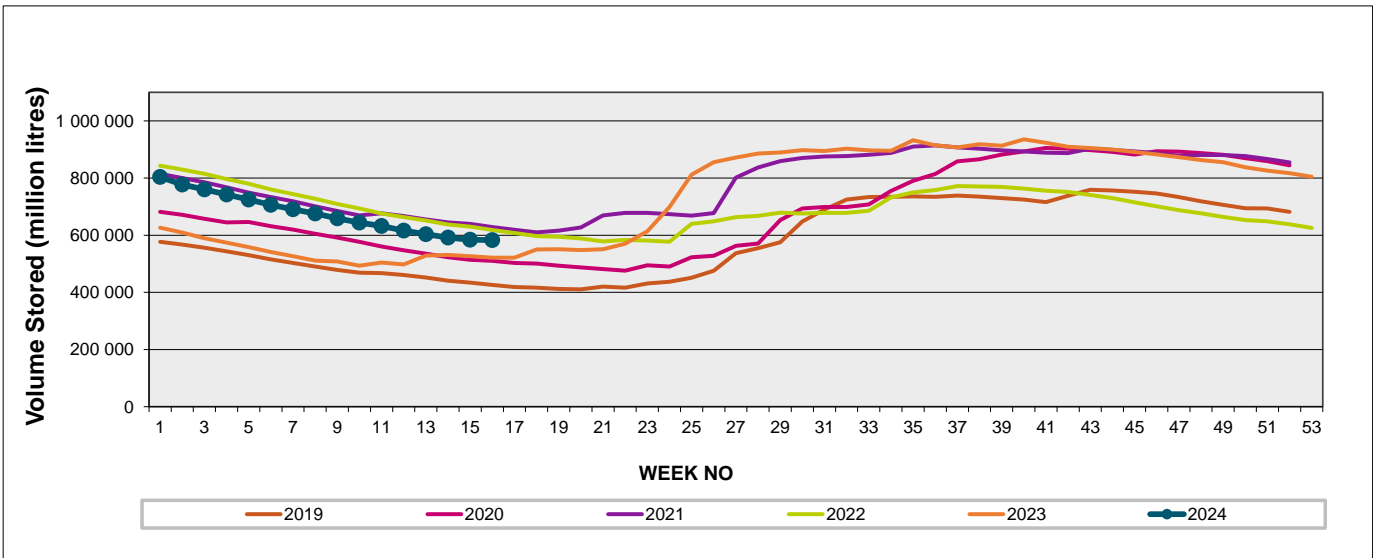
Weekly Change **-0.1%**

MAJOR DAMS (WCWSS)	STORAGE						
	CAPACITY	%	%	%	%	%	%
	MI	15 April 2024	Previous week	2023	2022	2021	2020
BERG RIVER	130 010	73.7	72.7	77.6	72.0	72.9	68.2
STEENBRAS LOWER	33 517	61.6	59.3	54.9	67.1	59.4	56.8
STEENBRAS UPPER	31 767	81.0	79.4	91.8	88.9	52.8	96.9
THEEWATERSKLOOF	480 188	64.0	64.0	56.1	71.4	75.4	52.1
VOËLVLEI	164 095	56.5	58.4	39.2	62.4	62.7	53.6
WEMMERSHOEK	58 644	69.3	70.3	70.1	57.1	65.5	51.7
TOTAL STORED	898 221	582 850	584 058	523 091	622 836	635 040	506 941
% STORAGE		64.9%	65.0%	58.2%	69.3%	70.7%	56.4%

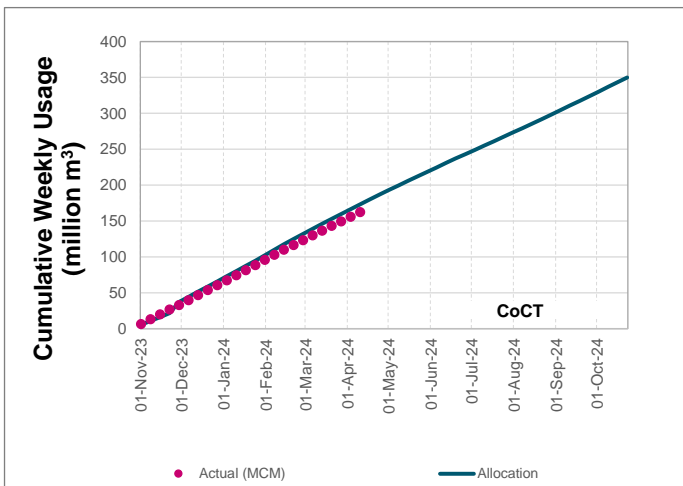
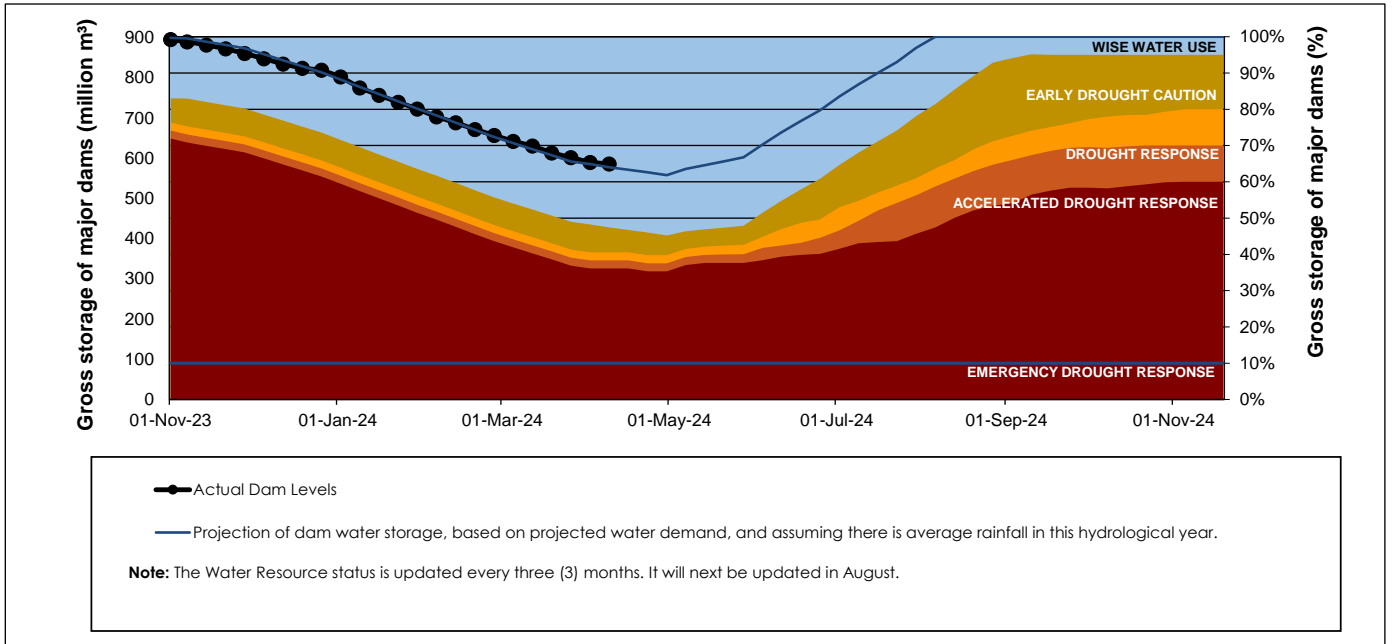
WCWSS Storage Record (2008 - Present)



WCWSS Comparative Storage Graph



Projected WCWSS Dam Storage Levels



Water Stored in Minor Dams

Overall Percentage Full **45.0**

Weekly Change **2.89**

MINOR DAMS	STORAGE						
	CAPACITY	%	%	%	%	%	%
	MI	15 April 2024	Previous week	2023	2022	2021	2020
ALEXANDRA (Table Mountain)	126	37.5	35.0	55.3	57.0	0.0	33.9
DE VILLIERS (Table Mountain)	243	83.3	83.5	98.4	67.4	53.6	94.0
HELY-HUTCHINSON (Table Mount)	925	22.5	7.5	31.8	19.0	7.0	0.0
KLEINPLAATS (Simon's Town)	1 368	42.6	43.6	19.4	56.4	51.8	40.2
LAND-EN-ZEEZICHT (Helderberg)	451	97.7	98.8	85.5	77.9	68.4	60.0
LEWIS GAY (Simon's Town)	182	59.8	62.6	48.2	0.0	46.5	0.0
VICTORIA (Table Mountain)	128	75.3	68.2	99.3	50.4	0.0	74.0
WOODHEAD (Table Mountain)	954	31.0	31.2	74.8	71.9	73.5	97.3
Total Stored	4 377	1970.1	1843.5	2185.5	2269.4	1972.1	2104.5
Percentages stored		45.0	42.1	49.9	51.8	45.1	48.1

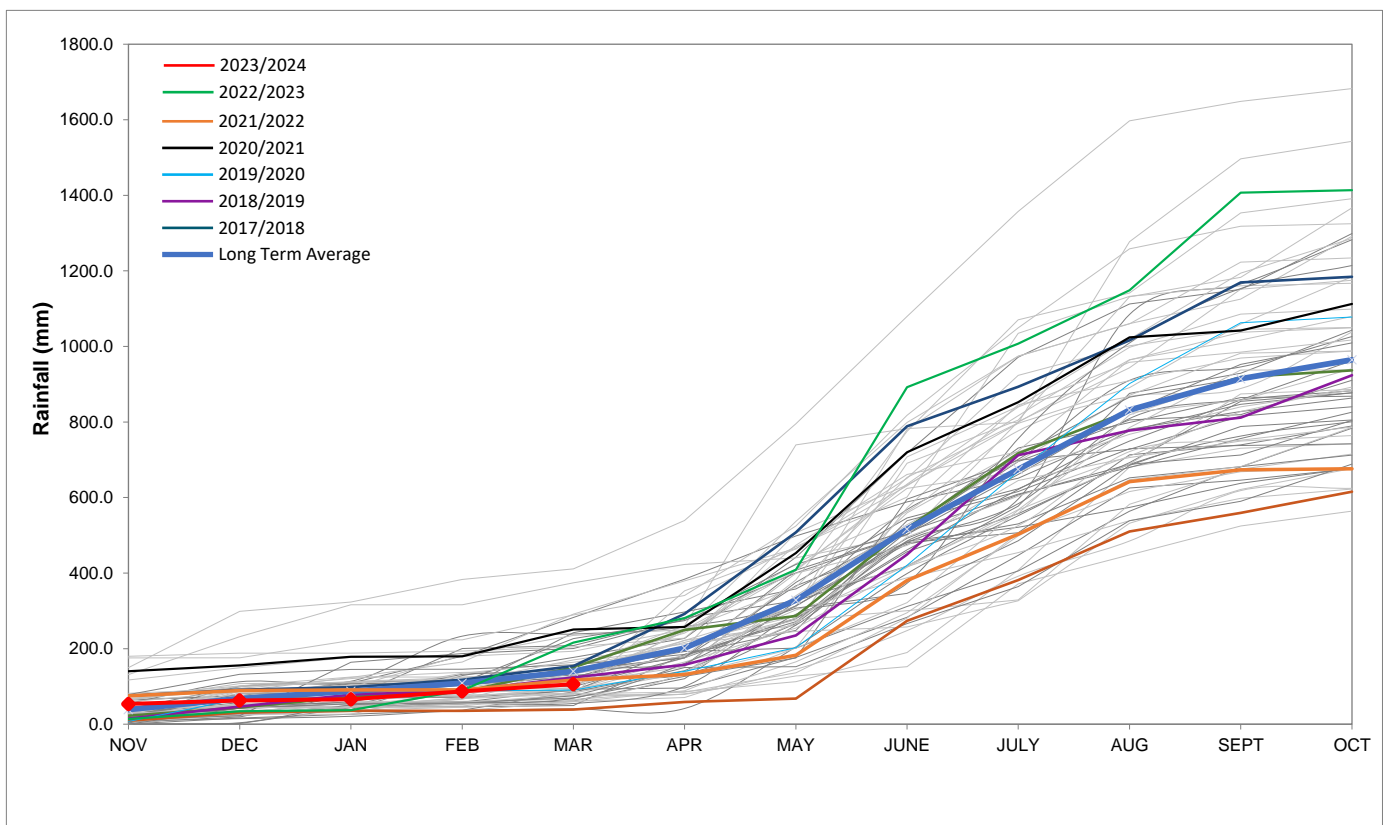
Rainfall Recorded

RAINFALL (mm)	08-Apr	09-Apr	10-Apr	11-Apr	12-Apr	13-Apr	14-Apr	Apr	
								Total*	LT Average
Blackheath Upper	10.0	2.0	0.0	0.0	0.0	0.0	0.0	23.0	36.1
Brooklands	10.0	10.0	0.0	0.0	0.0	0.0	0.0	64.0	61.9
Newlands	18.0	0.0	0.0	0.0	0.0	0.0	0.0	34.0	109.5
Steenbras	11.0	0.5	0.0	0.0	0.0	0.0	0.0	64.5	81.3
Table Mountain (Woodhead)	30.0	13.0	0.0	0.0	0.0	0.0	0.0	104.0	125.0
Theewaterskloof	43.0	0.0	1.4	0.0	0.0	0.0	0.0	88.4	53.3
Tygerberg	9.5	0.8	0.0	0.0	0.0	0.0	0.0	24.4	35.7
Voëlvlei	1.5	0.0	0.0	0.0	0.0	0.0	0.0	16.9	40.2
Wemmershoek	12.0	0.0	0.0	0.0	0.0	0.0	0.0	35.3	67.8
Wynberg	21.0	3.0	0.0	0.0	0.0	0.0	0.0	41.5	62.9

Notes: *Total/cummulative rainfall for month indicated above
LT: Long Term

Accumulated Monthly Rainfall at Wemmershoek

Note: Wemmershoek station used due to long record and mountainous location



Drinking Water Quality

SAMPLE PASS RATE		
Month	Water Quality Compliance (%)	Target (%)
Nov-21	99.11	98
Dec-21	99.09	98
Jan-22	99.04	98
Feb-22	99.04	98
Mar-22	98.99	98
Apr-22	98.96	98
May-22	98.90	98
Jun-22	98.96	98
Jul-22	99.46	99
Aug-22	99.47	99
Sep-22	99.46	98.50
Oct-22	99.47	98.50
Nov-22	99.45	98.50
Dec-22	99.36	98.50
Jan-23	99.36	98.50
Feb-23	99.35	98.50
Mar-23	99.29	98.50
Apr-23	99.24	98.50
May-23	99.24	98.50
Jun-23	99.18	98.50
Jul-23	99.19	98.50
Aug-23	99.14	98.50
Sep-23	99.10	98.50
Oct-23	99.10	98.50
Nov-23	99.04	98.50
Dec-23	99.15	98.50
Jan-24	99.16	98.50
Feb-24	99.12	98.50
Mar-24	99.16	98.50

This table shows CCT drinking water quality compliance according to the South African National Standard 241:2015. Compliance, measured against all prescribed chemical and microbiological components, consistently exceeds the very high CCT target of 98.5%. (Overall compliance percentages of continuous sampling and analysis are released on a monthly basis.