



Headline Statistics

<p>WCWSS DAM STORAGE (%)</p> <p>70.4</p>	<p>WEEKLY DAM LEVEL CHANGE (%)</p> <p>-1.30</p>	<p>AVERAGE TOTAL DAILY WATER USE (MLD)</p> <p>914</p>
---	--	--

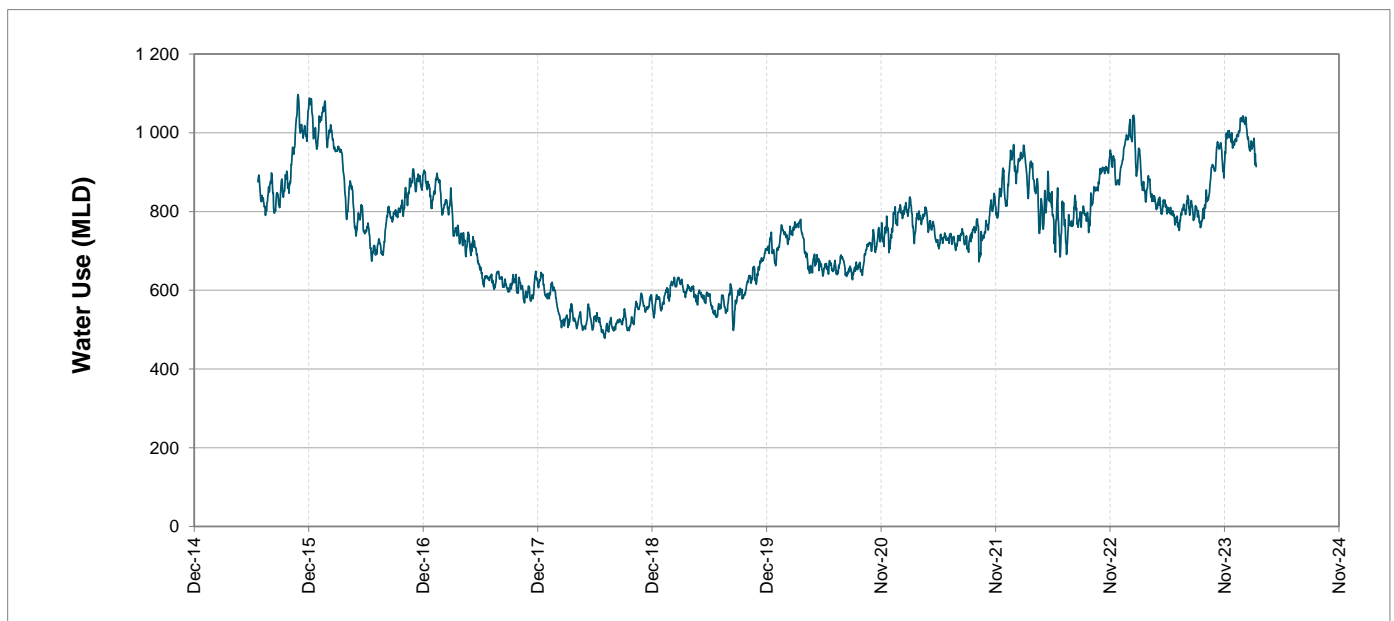
Water Resource Status

WATER RESOURCE STATUS	MEANING OF CURRENT STATUS
Wise Water Use	<p>Although early winter rains have been above average, the City will continue to monitor these levels. It is important to continue using water wisely.</p> <p>Note: The Water Resource status is updated every three (3) months. It will next be updated in May.</p>

Water Production from Different Sources

<p>MAJOR DAMS (MLD)</p> <p>906</p>	<p>MINOR DAMS (MLD)</p> <p>7</p>	<p>GROUND WATER AND SPRINGS (MLD)</p> <p>1</p>
---	---	---

Overall Water Usage Trend (2010 - Present)



WCWSS means Western Cape Water Supply System

MLD means million litres per day

More information on Water Saving and Restrictions is available on the City of Cape Town's 'ThinkWater' website

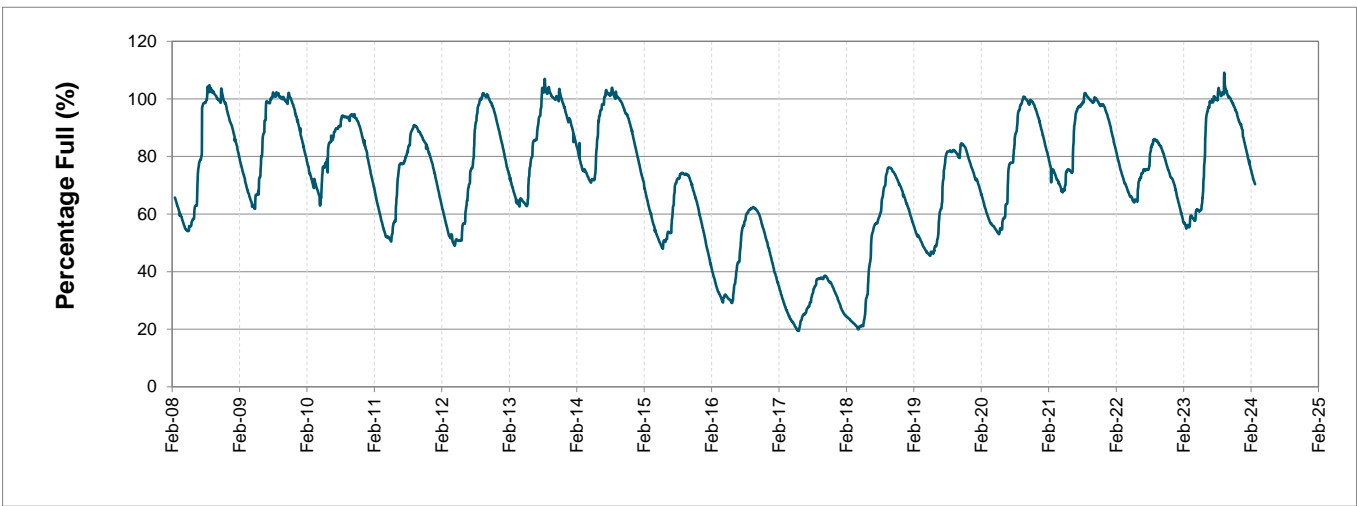
Water Stored in Major Dams (WCWSS)

Overall Percentage Full **70.4%**

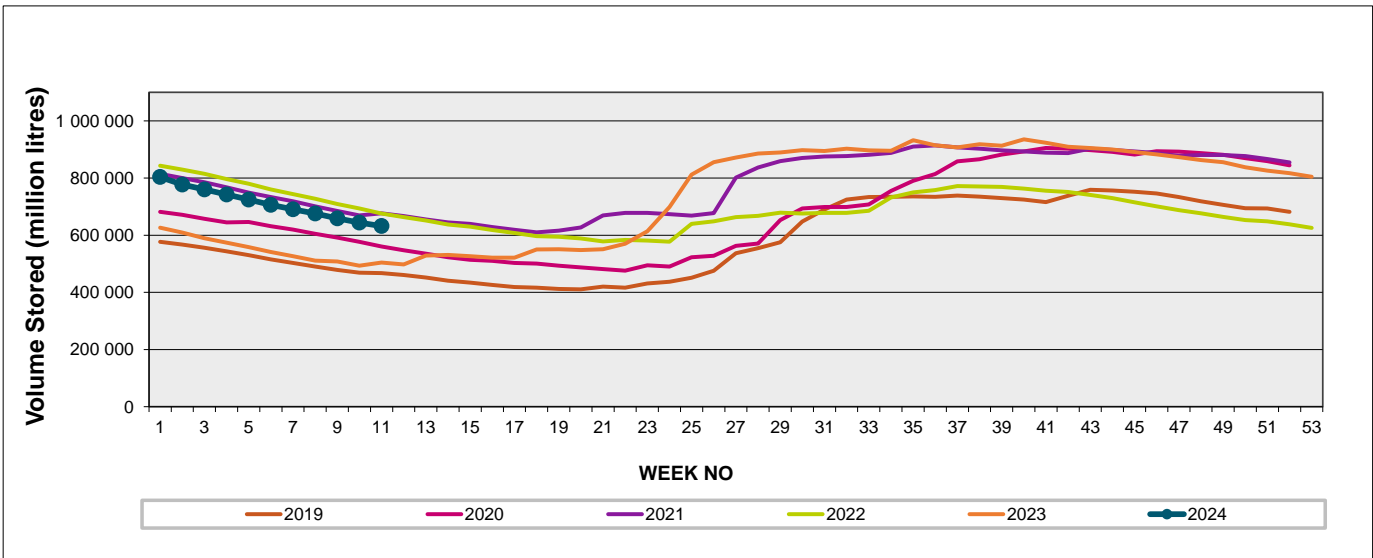
Weekly Change **-1.3%**

MAJOR DAMS (WCWSS)	STORAGE						
	CAPACITY	%	%	%	%	%	%
	MI	11 March 2024	Previous week	2023	2022	2021	2020
BERG RIVER	130 010	75.7	76.4	70.1	77.9	77.2	73.4
STEENBRAS LOWER	33 517	63.7	65.4	56.0	71.7	68.1	65.5
STEENBRAS UPPER	31 767	90.8	93.8	91.7	88.1	52.0	97.8
THEEWATERSKLOOF	480 188	69.2	70.4	53.5	78.4	78.4	57.0
VOËLVLEI	164 095	64.4	66.3	40.5	69.7	67.4	60.9
WEMMERSHOEK	58 644	77.2	78.8	68.5	66.1	75.1	60.4
TOTAL STORED	898 221	631 926	644 108	502 416	682 671	670 476	557 319
% STORAGE		70.4%	71.7%	55.9%	76.0%	74.6%	62.0%

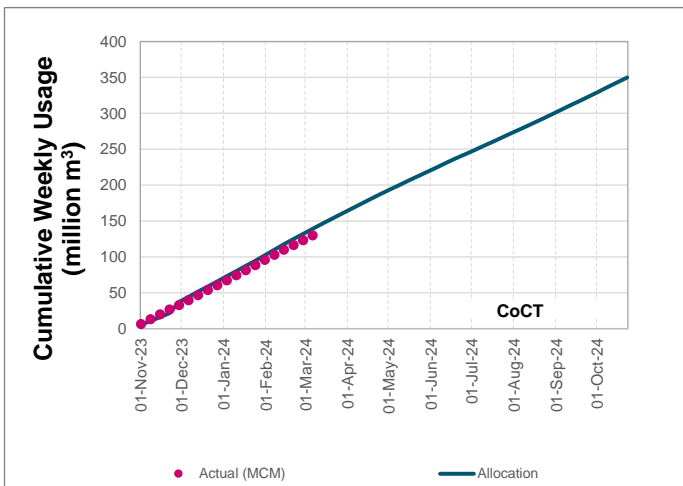
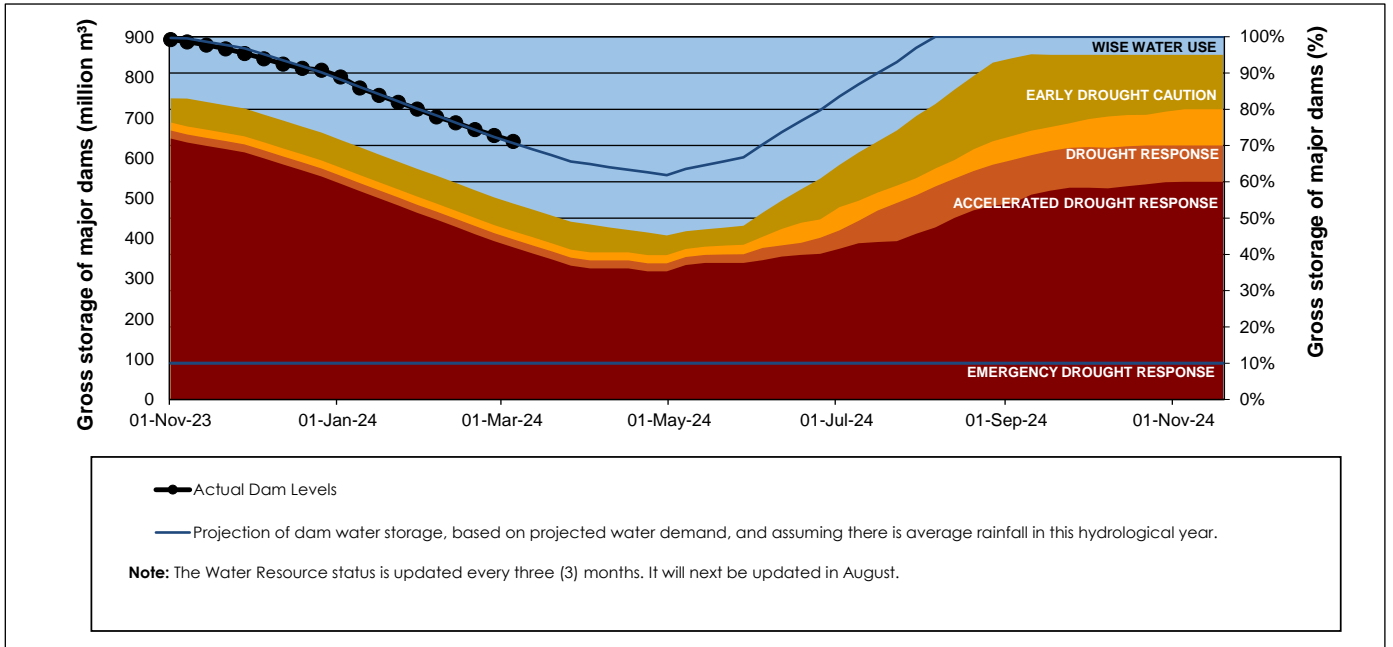
WCWSS Storage Record (2008 - Present)



WCWSS Comparative Storage Graph



Projected WCWSS Dam Storage Levels



Water Stored in Minor Dams

Overall Percentage Full **47.1**

Weekly Change **1.05**

MINOR DAMS	STORAGE						
	CAPACITY	%	%	%	%	%	%
	MI	11 March 2024	Previous week	2023	2022	2021	2020
ALEXANDRA (Table Mountain)	126	38.1	37.5	49.6	60.6	46.1	34.1
DE VILLIERS (Table Mountain)	243	96.7	95.1	86.2	56.2	62.6	95.8
HELY-HUTCHINSON (Table Mount)	925	7.1	2.0	0.0	14.6	18.4	0.0
KLEINPLAATS (Simon's Town)	1 368	54.2	54.9	30.0	63.2	59.4	45.1
LAND-EN-ZEEZICHT (Helderberg)	451	91.5	87.3	85.5	81.8	72.1	64.4
LEWIS GAY (Simon's Town)	182	30.8	34.3	58.4	32.7	79.6	0.5
VICTORIA (Table Mountain)	128	72.0	70.1	86.8	51.3	0.0	78.2
WOODHEAD (Table Mountain)	954	45.1	46.5	66.9	64.6	71.2	87.9
Total Stored	4 377	2063.6	2017.7	1918.3	2299.5	2310.7	2109.8
Percentages stored		47.1	46.1	43.8	52.5	52.8	48.2

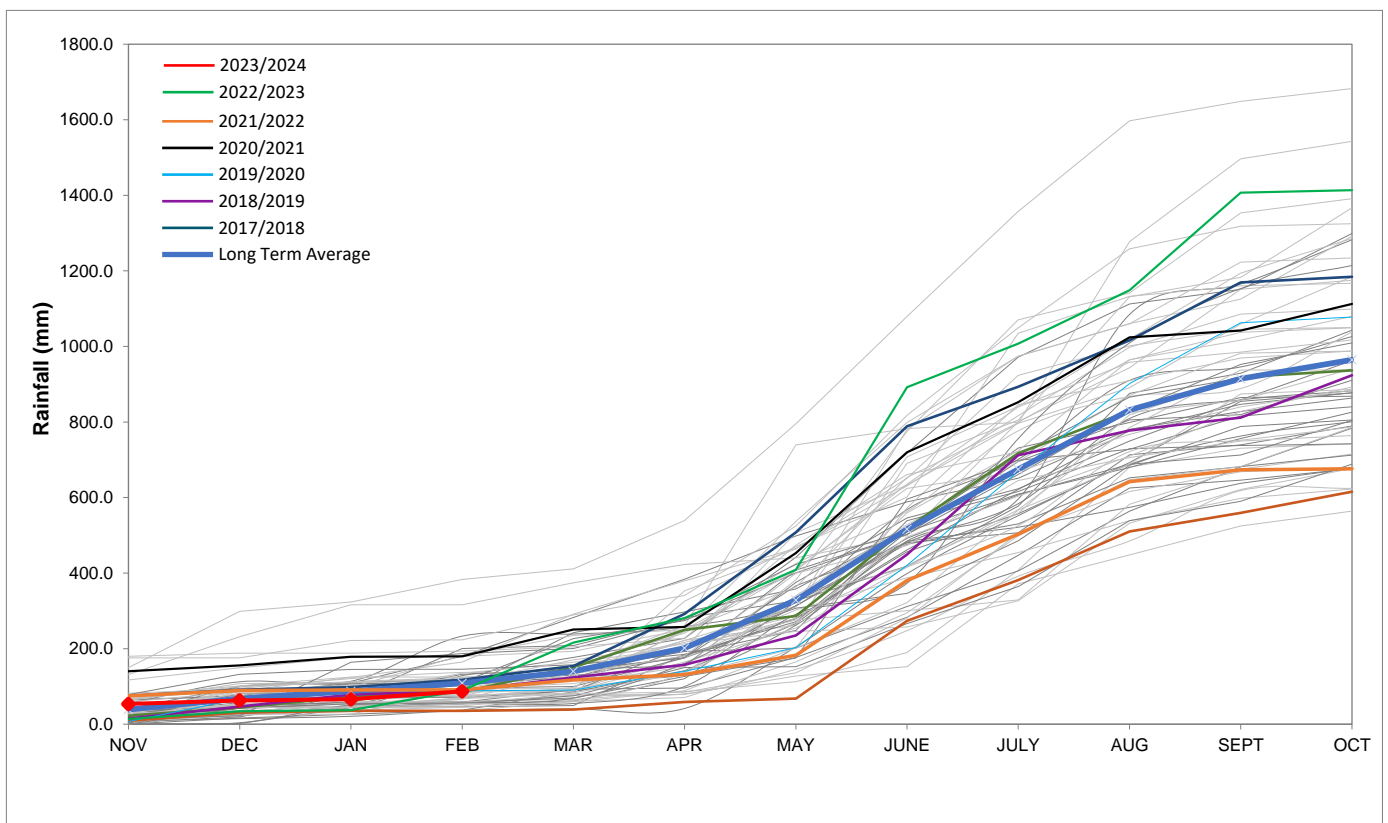
Rainfall Recorded

RAINFALL (mm)	04-Mar	05-Mar	06-Mar	07-Mar	08-Mar	09-Mar	10-Mar	Mar	
								Total*	LT Average
Blackheath Upper	10.0	0.0	0.0	2.5	0.0	0.0	0.0	12.5	18.5
Brooklands	10.0	0.0	0.0	5.0	0.0	0.0	0.0	15.0	36.3
Newlands	10.0	1.0	0.0	18.0	0.0	0.0	0.0	33.5	46.0
Steenbras	49.0	2.5	0.0	4.0	0.0	0.0	0.0	55.5	39.0
Table Mountain (Woodhead)	42.0	0.0	0.0	23.0	0.0	0.0	0.0	78.0	58.7
Theewaterskloof	12.3	3.0	0.0	0.0	0.0	0.0	0.0	17.4	26.9
Tygerberg	6.7	0.0	0.0	2.6	0.0	0.0	0.0	9.3	15.0
Voëlvlei	22.0	0.0	0.0	0.0	0.0	0.0	0.0	22.0	12.9
Wemmershoek	18.5	0.0	0.0	0.0	0.0	0.0	0.0	18.5	29.3
Wynberg	14.0	0.0	0.0	3.0	0.0	0.0	0.0	18.5	26.2

Notes: *Total/cummulative rainfall for month indicated above
LT: Long Term

Accumulated Monthly Rainfall at Wemmershoek

Note: Wemmershoek station used due to long record and mountainous location



Drinking Water Quality

SAMPLE PASS RATE

Month	Water Quality Compliance (%)	Target (%)
Nov-21	99.11	98
Dec-21	99.09	98
Jan-22	99.04	98
Feb-22	99.04	98
Mar-22	98.99	98
Apr-22	98.96	98
May-22	98.90	98
Jun-22	98.96	98
Jul-22	99.46	99
Aug-22	99.47	99
Sep-22	99.46	98.50
Oct-22	99.47	98.50
Nov-22	99.45	98.50
Dec-22	99.36	98.50
Jan-23	99.36	98.50
Feb-23	99.35	98.50
Mar-23	99.29	98.50
Apr-23	99.24	98.50
May-23	99.24	98.50
Jun-23	99.18	98.50
Jul-23	99.19	98.50
Aug-23	99.14	98.50
Sep-23	99.10	98.50
Oct-23	99.10	98.50
Nov-23	99.04	98.50
Dec-23	99.15	98.50
Jan-24	99.16	98.50

This table shows CCT drinking water quality compliance according to the South African National Standard 241:2015. Compliance, measured against all prescribed chemical and microbiological components, consistently exceeds the very high CCT target of 98.5%. (Overall compliance percentages of continuous sampling and analysis are released on a monthly basis.