



Headline Statistics

<p>WCWSS DAM STORAGE (%)</p> <p>71.7</p>	<p>WEEKLY DAM LEVEL CHANGE (%)</p> <p>-1.70</p>	<p>AVERAGE TOTAL DAILY WATER USE (MLD)</p> <p>986</p>
---	--	--

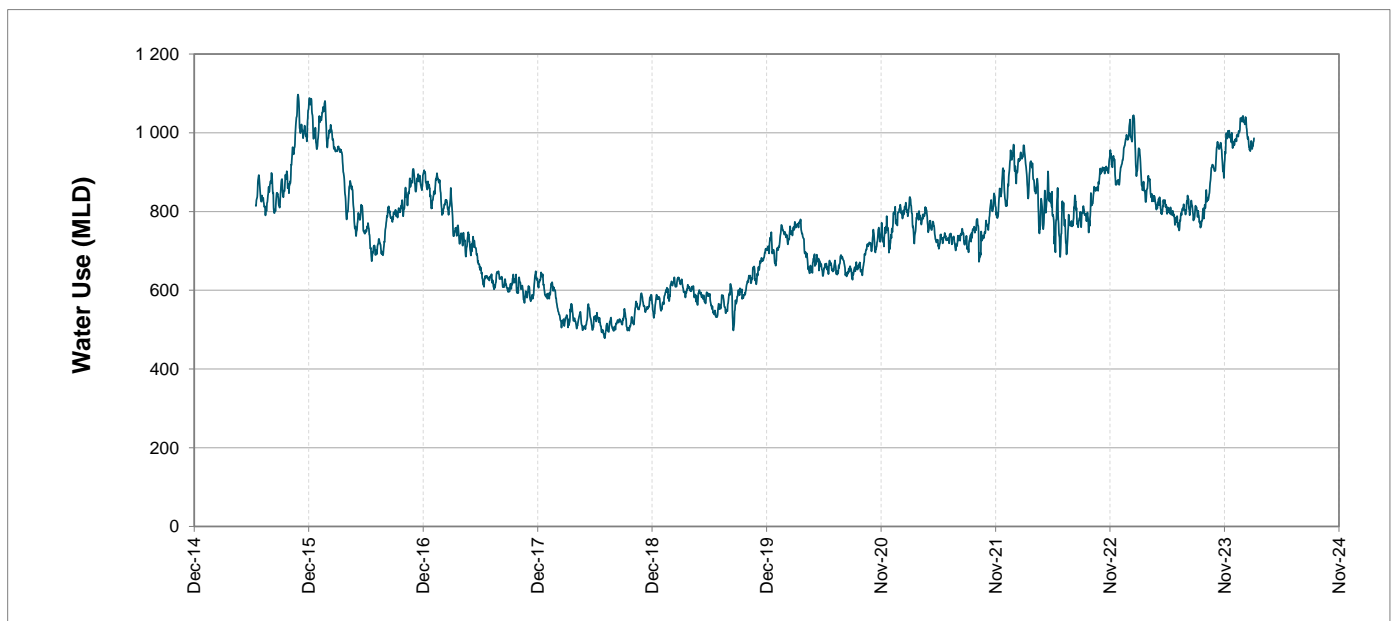
Water Resource Status

WATER RESOURCE STATUS	MEANING OF CURRENT STATUS
Wise Water Use	<p>Although early winter rains have been above average, the City will continue to monitor these levels. It is important to continue using water wisely.</p> <p>Note: The Water Resource status is updated every three (3) months. It will next be updated in May.</p>

Water Production from Different Sources

<p>MAJOR DAMS (MLD)</p> <p>967</p>	<p>MINOR DAMS (MLD)</p> <p>17</p>	<p>GROUND WATER AND SPRINGS (MLD)</p> <p>2</p>
---	--	---

Overall Water Usage Trend (2010 - Present)



WCWSS means Western Cape Water Supply System

MLD means million litres per day

More information on Water Saving and Restrictions is available on the City of Cape Town's 'ThinkWater' website

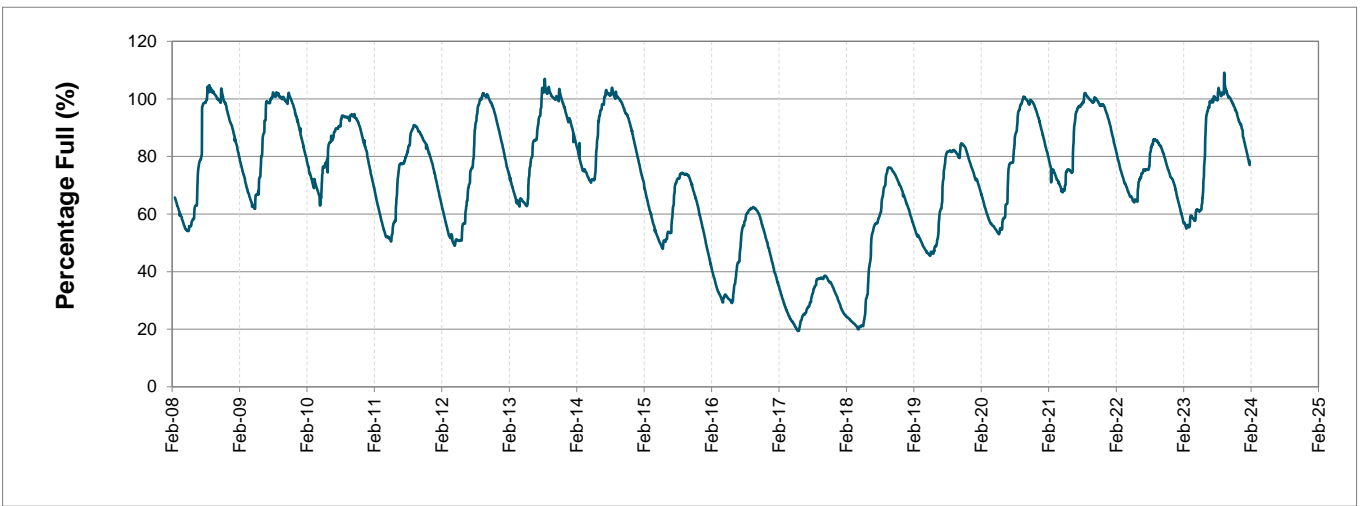
Water Stored in Major Dams (WCWSS)

Overall Percentage Full **71.7%**

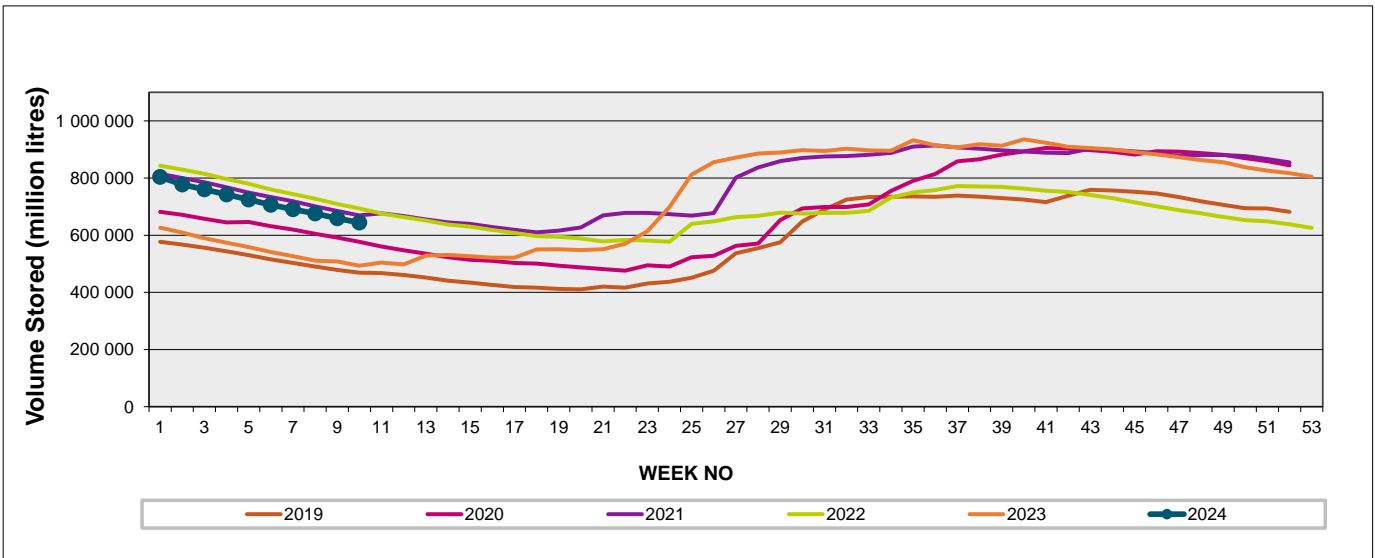
Weekly Change **-1.7%**

MAJOR DAMS (WCWSS)	STORAGE						
	CAPACITY	%	%	%	%	%	%
	MI	04 March 2024	Previous week	2023	2022	2021	2020
BERG RIVER	130 010	76.4	77.7	69.1	79.6	75.4	75.4
STEENBRAS LOWER	33 517	65.4	67.2	55.5	74.0	69.0	67.2
STEENBRAS UPPER	31 767	93.8	95.3	87.9	92.3	52.2	98.0
THEEWATERSKLOOF	480 188	70.4	71.9	52.5	80.2	79.6	58.8
VOËLVLEI	164 095	66.3	68.8	40.9	71.9	69.7	62.4
WEMMERSHOEK	58 644	78.8	80.4	68.8	68.1	75.6	62.4
TOTAL STORED	898 221	644 108	659 142	495 802	700 667	678 775	573 169
% STORAGE		71.7%	73.4%	55.2%	78.0%	75.6%	63.8%

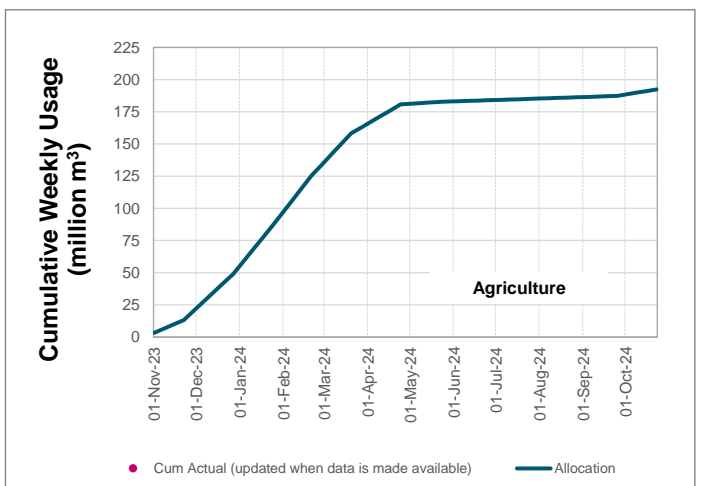
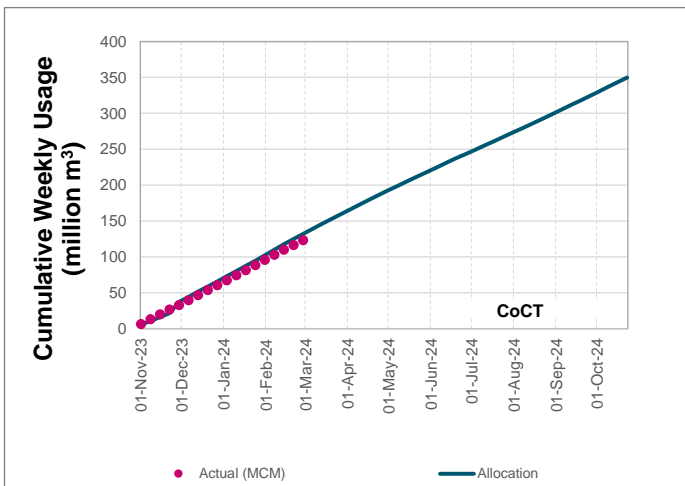
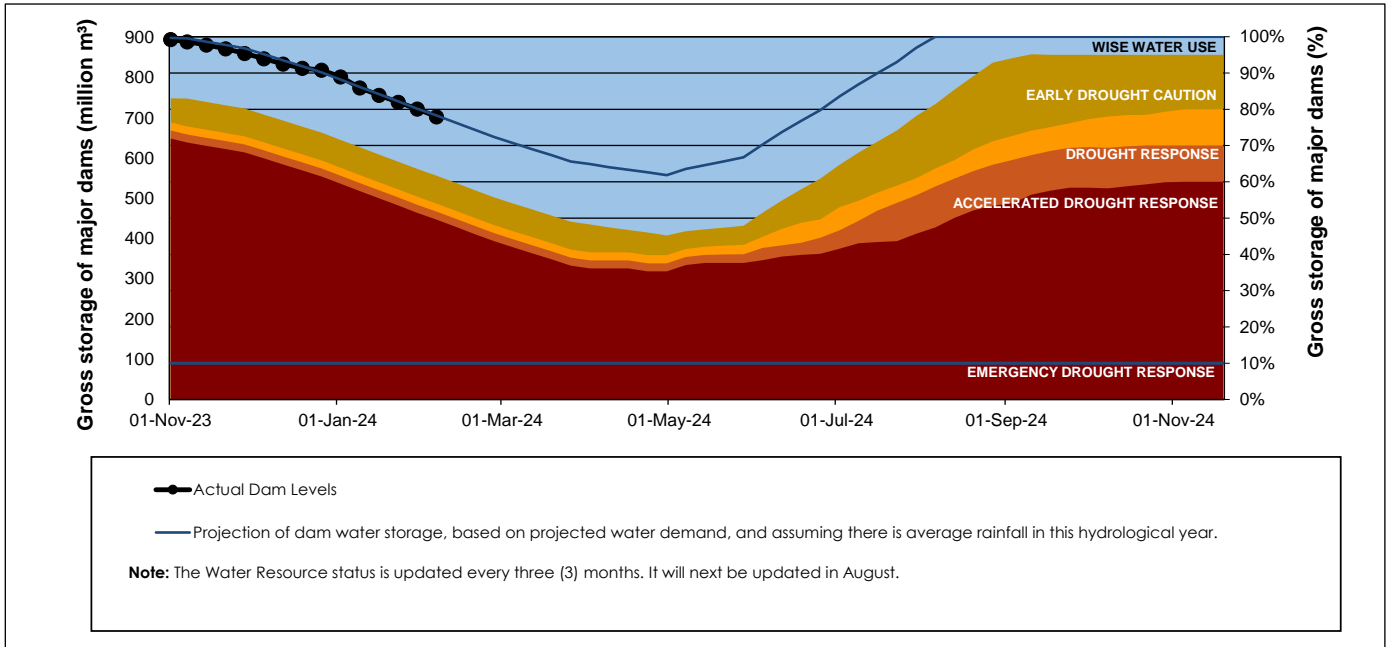
WCWSS Storage Record (2008 - Present)



WCWSS Comparative Storage Graph



Projected WCWSS Dam Storage Levels



Water Stored in Minor Dams

Overall Percentage Full **46.2**

Weekly Change **-2.01**

MINOR DAMS	STORAGE						
	CAPACITY	%	%	%	%	%	%
	MI	04 March 2024	Previous week	2023	2022	2021	2020
ALEXANDRA (Table Mountain)	126	37.8	39.1	43.5	62.0	47.2	34.4
DE VILLIERS (Table Mountain)	243	95.9	96.7	80.3	65.2	63.6	96.3
HELY-HUTCHINSON (Table Mount)	925	0.0	0.0	0.0	23.0	22.0	0.0
KLEINPLAATS (Simon's Town)	1 368	54.9	56.7	30.2	64.3	61.1	46.8
LAND-EN-ZEEZICHT (Helderberg)	451	87.3	81.3	84.9	83.5	74.6	67.5
LEWIS GAY (Simon's Town)	182	34.3	43.6	55.4	42.0	71.5	1.8
VICTORIA (Table Mountain)	128	70.8	72.7	75.3	53.9	0.0	79.3
WOODHEAD (Table Mountain)	954	48.4	55.8	48.2	57.4	67.0	83.6
Total Stored	4 377	2020.5	2108.6	1697.1	2373.7	2328.8	2110.4
Percentages stored		46.2	48.2	38.8	54.2	53.2	48.2

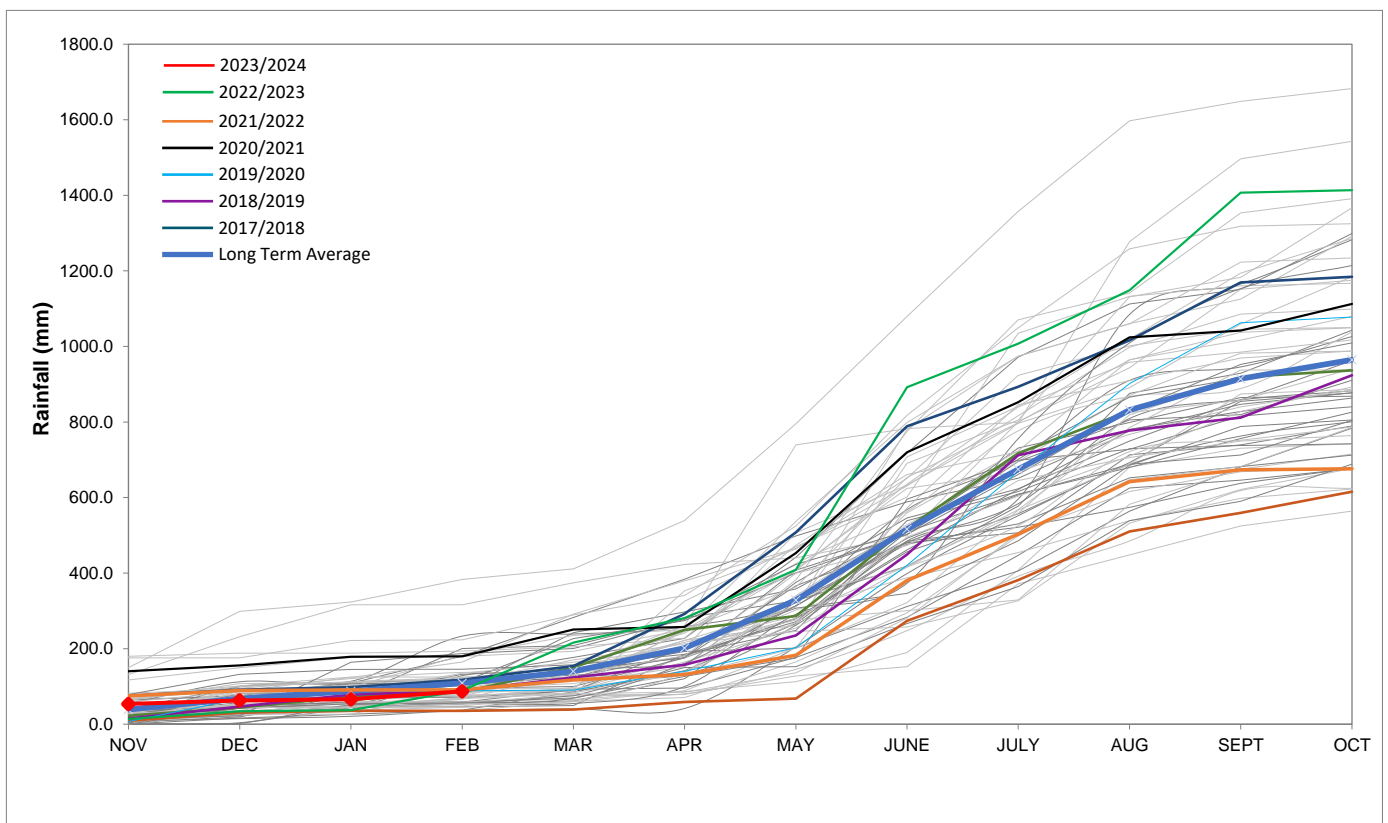
Rainfall Recorded

RAINFALL (mm)	26-Feb	27-Feb	28-Feb	29-Feb	01-Mar	02-Mar	03-Mar	Mar	
								Total*	LT Average
Blackheath Upper	0.0	0.0	0.0	0.0	0.0	0.0	0.0	0.0	18.5
Brooklands	0.0	0.0	0.0	0.0	0.0	0.0	0.0	0.0	36.3
Newlands	0.0	0.0	0.0	0.0	0.0	0.0	4.5	4.5	46.0
Steenbras	0.0	0.0	0.0	0.0	0.0	0.0	0.0	0.0	39.0
Table Mountain (Woodhead)	0.0	0.0	0.0	0.0	0.0	0.0	0.0	0.0	58.7
Theewaterskloof	0.0	0.0	0.0	0.0	0.0	0.0	2.1	2.1	26.9
Tygerberg	0.0	0.0	0.0	0.0	0.0	0.0	0.0	0.0	15.0
Voëlvlei	0.0	0.0	0.0	0.0	0.0	0.0	0.0	0.0	12.9
Wemmershoek	0.0	0.0	0.0	0.0	0.0	0.0	0.0	0.0	29.3
Wynberg	0.0	0.0	0.0	0.0	0.0	0.0	1.5	1.5	26.2

Notes: *Total/cummulative rainfall for month indicated above
LT: Long Term

Accumulated Monthly Rainfall at Wemmershoek

Note: Wemmershoek station used due to long record and mountainous location



Drinking Water Quality

SAMPLE PASS RATE

Month	Water Quality Compliance (%)	Target (%)
Nov-21	99.11	98
Dec-21	99.09	98
Jan-22	99.04	98
Feb-22	99.04	98
Mar-22	98.99	98
Apr-22	98.96	98
May-22	98.90	98
Jun-22	98.96	98
Jul-22	99.46	99
Aug-22	99.47	99
Sep-22	99.46	98.50
Oct-22	99.47	98.50
Nov-22	99.45	98.50
Dec-22	99.36	98.50
Jan-23	99.36	98.50
Feb-23	99.35	98.50
Mar-23	99.29	98.50
Apr-23	99.24	98.50
May-23	99.24	98.50
Jun-23	99.18	98.50
Jul-23	99.19	98.50
Aug-23	99.14	98.50
Sep-23	99.10	98.50
Oct-23	99.10	98.50
Nov-23	99.04	98.50
Dec-23	99.15	98.50
Jan-24	99.16	98.50

This table shows CCT drinking water quality compliance according to the South African National Standard 241:2015. Compliance, measured against all prescribed chemical and microbiological components, consistently exceeds the very high CCT target of 98.5%. (Overall compliance percentages of continuous sampling and analysis are released on a monthly basis.