



Headline Statistics

<p>WCWSS DAM STORAGE (%)</p> <p>73.4</p>	<p>WEEKLY DAM LEVEL CHANGE (%)</p> <p>-1.80</p>	<p>AVERAGE TOTAL DAILY WATER USE (MLD)</p> <p>966</p>
---	--	--

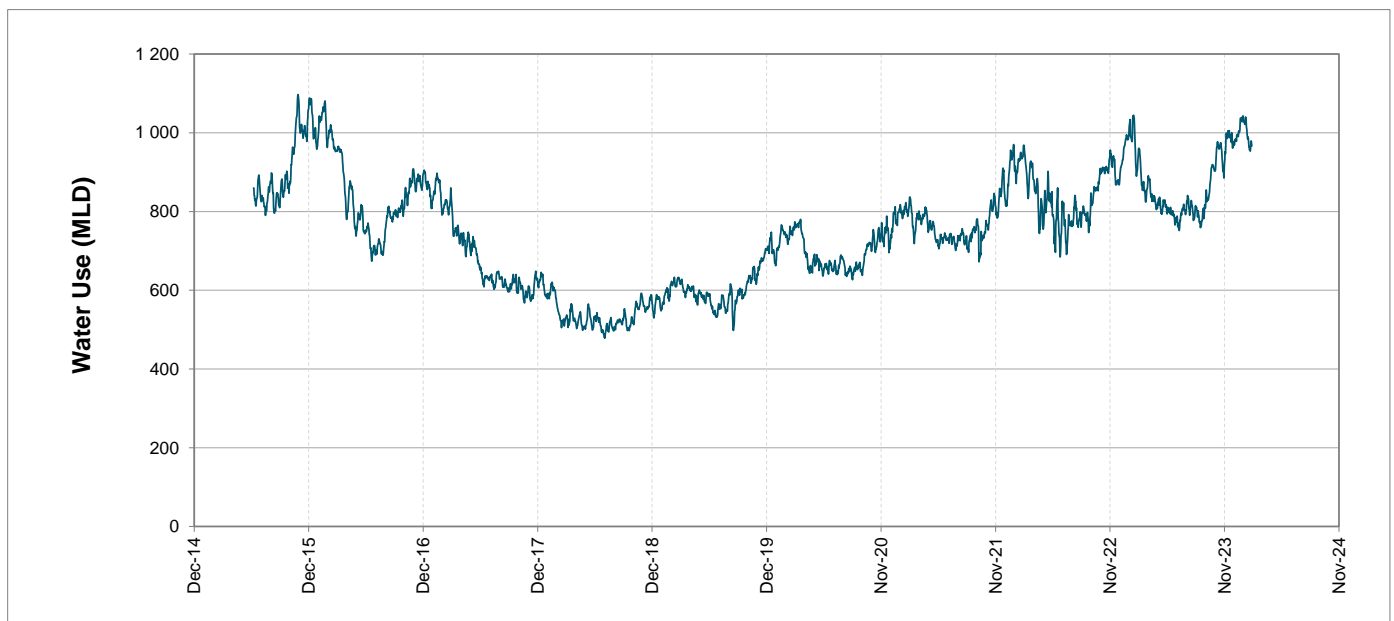
Water Resource Status

WATER RESOURCE STATUS	MEANING OF CURRENT STATUS
Wise Water Use	<p>Although early winter rains have been above average, the City will continue to monitor these levels. It is important to continue using water wisely.</p> <p>Note: The Water Resource status is updated every three (3) months. It will next be updated in February.</p>

Water Production from Different Sources

<p>MAJOR DAMS (MLD)</p> <p>949</p>	<p>MINOR DAMS (MLD)</p> <p>17</p>	<p>GROUND WATER AND SPRINGS (MLD)</p> <p>0</p>
---	--	---

Overall Water Usage Trend (2010 - Present)



WCWSS means Western Cape Water Supply System

MLD means million litres per day

More information on Water Saving and Restrictions is available on the City of Cape Town's 'ThinkWater' website

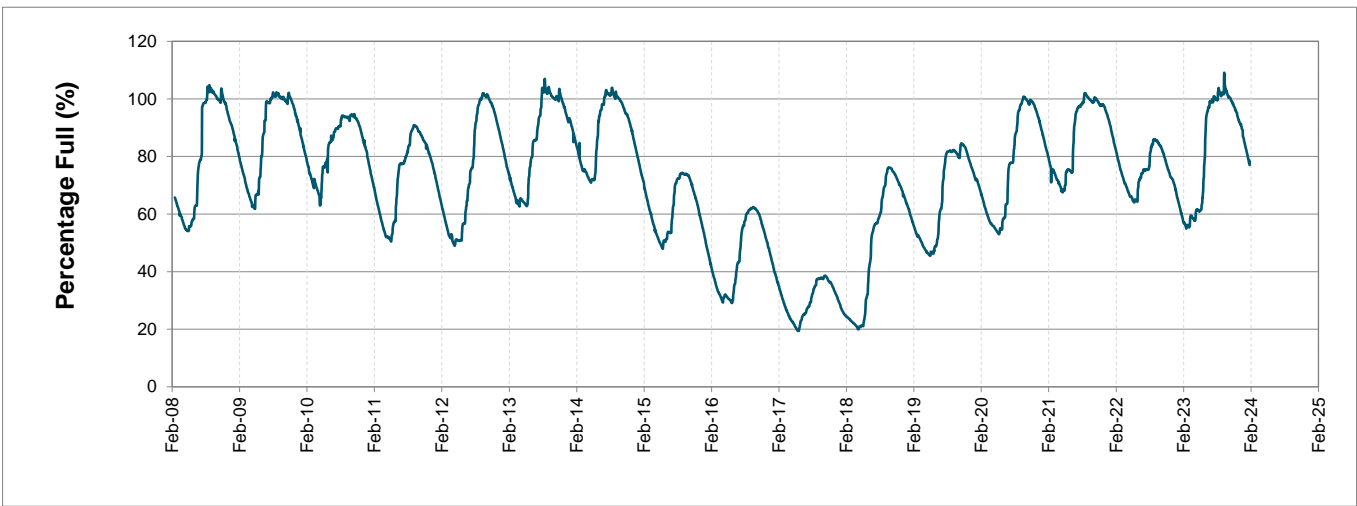
Water Stored in Major Dams (WCWSS)

Overall Percentage Full **73.4%**

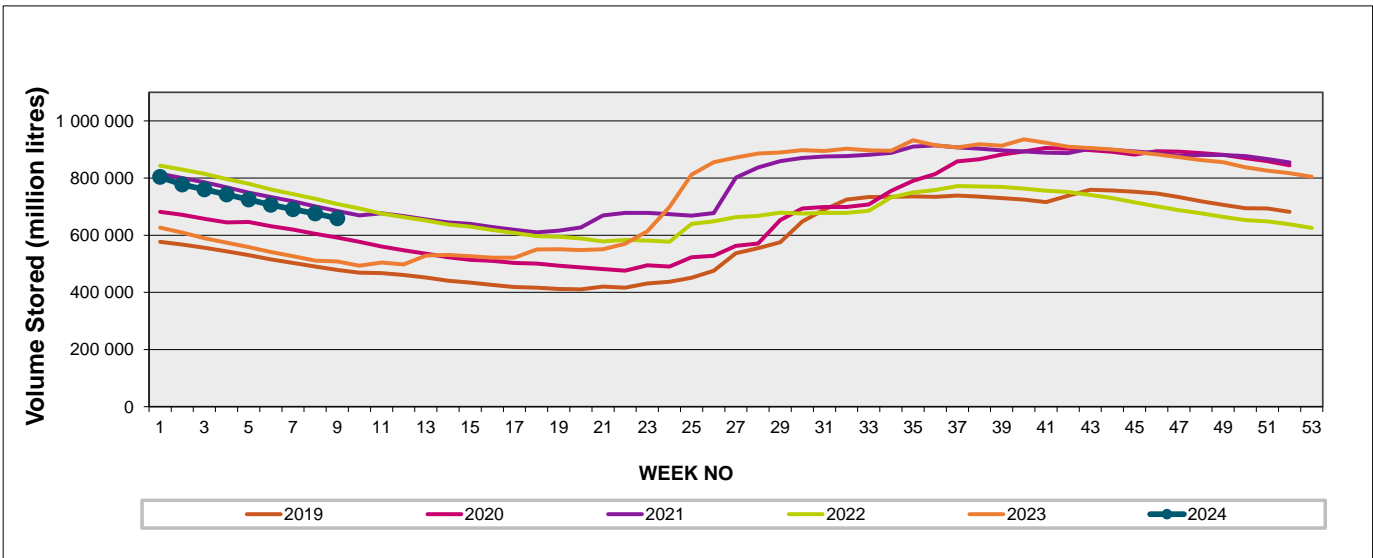
Weekly Change **-1.8%**

MAJOR DAMS (WCWSS)	STORAGE						
	CAPACITY	%	%	%	%	%	%
	MI	26 February 2024	Previous week	2023	2022	2021	2020
BERG RIVER	130 010	77.7	78.9	71.3	81.0	76.8	77.9
STEENBRAS LOWER	33 517	67.2	68.5	57.0	74.7	71.3	70.0
STEENBRAS UPPER	31 767	95.3	95.8	89.5	92.4	51.3	98.4
THEEWATERSKLOOF	480 188	71.9	73.8	53.8	81.5	80.9	59.9
VOËLVLEI	164 095	68.8	71.2	41.7	73.9	71.4	64.3
WEMMERSHOEK	58 644	80.4	82.4	70.0	70.1	77.3	64.6
TOTAL STORED	898 221	659 142	675 654	507 964	713 428	690 782	586 991
% STORAGE		73.4%	75.2%	56.6%	79.4%	76.9%	65.4%

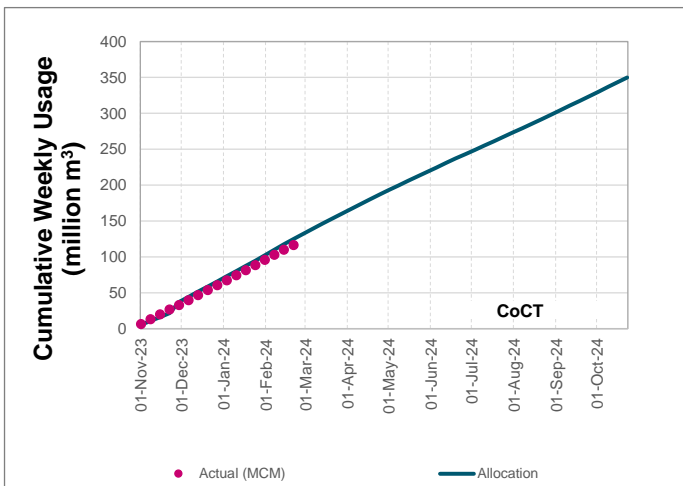
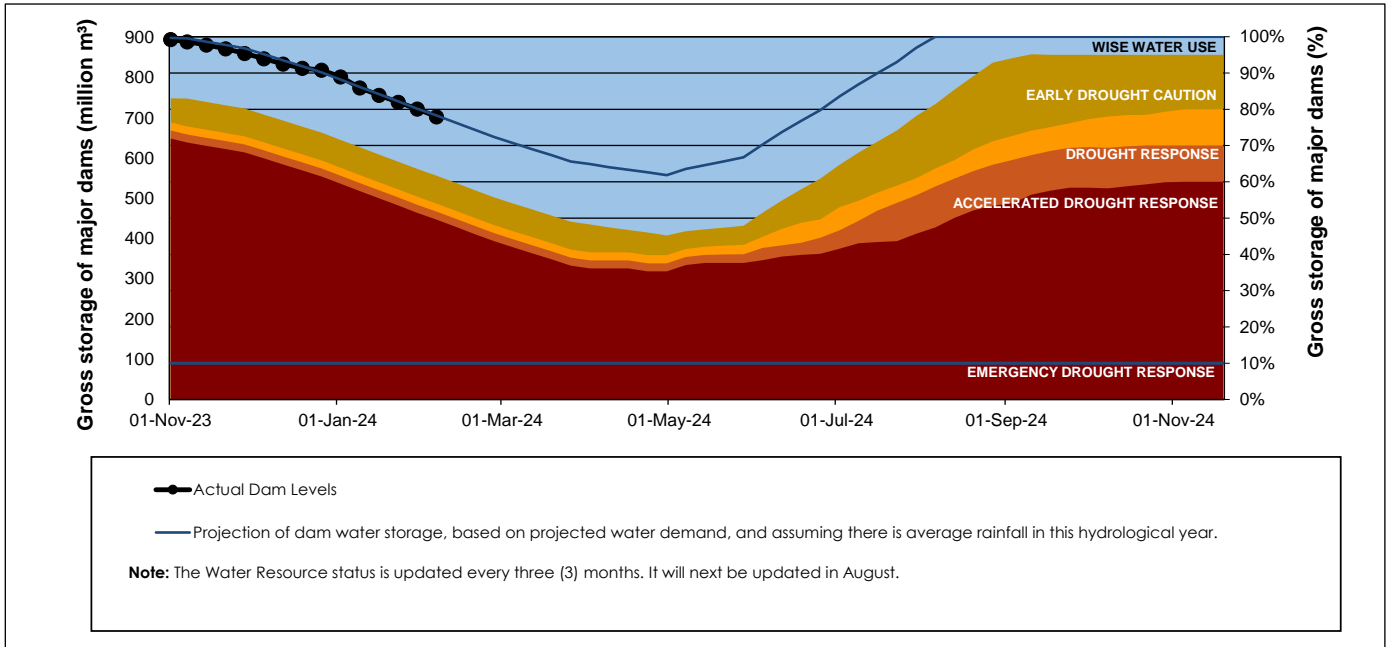
WCWSS Storage Record (2008 - Present)



WCWSS Comparative Storage Graph



Projected WCWSS Dam Storage Levels



Water Stored in Minor Dams

Overall Percentage Full **50.4**

Weekly Change **-2.49**

MINOR DAMS	STORAGE						
	CAPACITY	%	%	%	%	%	%
	MI	26 February 2024	Previous week	2023	2022	2021	2020
ALEXANDRA (Table Mountain)	126	39.4	42.4	44.3	63.4	44.8	35.4
DE VILLIERS (Table Mountain)	243	96.7	97.0	80.9	65.1	63.0	96.7
HELY-HUTCHINSON (Table Mount)	925	7.7	7.7	5.2	31.3	27.3	12.6
KLEINPLAATS (Simon's Town)	1 368	56.7	58.7	31.0	65.2	64.2	50.1
LAND-EN-ZEEZICHT (Helderberg)	451	81.3	81.3	84.7	85.0	76.6	70.8
LEWIS GAY (Simon's Town)	182	43.6	54.3	54.3	49.4	65.5	1.4
VICTORIA (Table Mountain)	128	72.4	73.0	75.6	53.9	0.0	81.0
WOODHEAD (Table Mountain)	954	58.4	64.6	56.6	56.5	61.6	88.8
Total Stored	4 377	2204.9	2314.0	1836.4	2474.2	2360.8	2339.2
Percentages stored		50.4	52.9	42.0	56.5	53.9	53.4

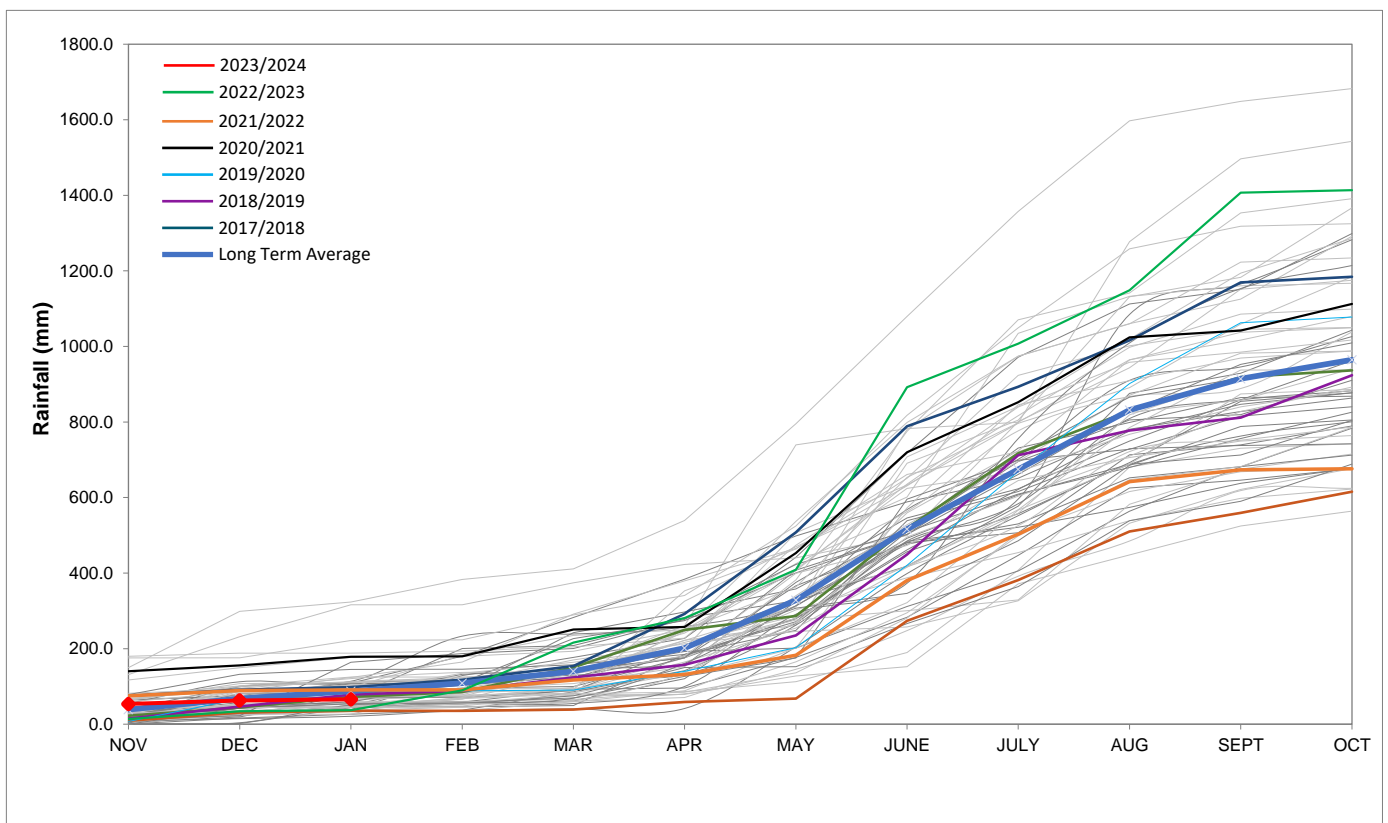
Rainfall Recorded

RAINFALL (mm)	19-Feb	20-Feb	21-Feb	22-Feb	23-Feb	24-Feb	25-Feb	Feb	
								Total*	LT Average
Blackheath Upper	0.0	0.0	0.0	0.0	0.0	4.0	0.0	12.0	15.1
Brooklands	0.0	0.0	0.0	0.0	0.0	10.0	0.0	17.0	19.2
Newlands	0.0	0.0	0.0	0.0	0.0	1.5	0.0	7.0	29.1
Steenbras	0.0	0.0	0.0	0.0	0.0	14.0	0.5	26.2	27.0
Table Mountain (Woodhead)	0.0	0.0	0.0	0.0	0.0	6.0	0.0	20.5	40.1
Theewaterskloof	0.0	0.0	0.0	0.0	0.0	2.3	1.5	11.8	22.6
Tygerberg	0.0	0.0	0.0	0.0	0.0	3.9	0.0	14.8	7.1
Voëlvlei	0.0	0.0	0.0	0.0	0.0	7.0	0.0	11.0	9.3
Wemmershoek	0.0	0.0	0.0	0.0	0.0	4.4	0.0	21.1	15.7
Wynberg	0.0	0.0	0.0	0.0	0.0	4.5	0.0	12.0	11.7

Notes: *Total/cummulative rainfall for month indicated above
LT: Long Term

Accumulated Monthly Rainfall at Wemmershoek

Note: Wemmershoek station used due to long record and mountainous location



Drinking Water Quality

SAMPLE PASS RATE

Month	Water Quality Compliance (%)	Target (%)
Nov-21	99.11	98
Dec-21	99.09	98
Jan-22	99.04	98
Feb-22	99.04	98
Mar-22	98.99	98
Apr-22	98.96	98
May-22	98.90	98
Jun-22	98.96	98
Jul-22	99.46	99
Aug-22	99.47	99
Sep-22	99.46	98.50
Oct-22	99.47	98.50
Nov-22	99.45	98.50
Dec-22	99.36	98.50
Jan-23	99.36	98.50
Feb-23	99.35	98.50
Mar-23	99.29	98.50
Apr-23	99.24	98.50
May-23	99.24	98.50
Jun-23	99.18	98.50
Jul-23	99.19	98.50
Aug-23	99.14	98.50
Sep-23	99.10	98.50
Oct-23	99.10	98.50
Nov-23	99.04	98.50
Dec-23	99.15	98.50
Jan-24	99.16	98.50

This table shows CCT drinking water quality compliance according to the South African National Standard 241:2015. Compliance, measured against all prescribed chemical and microbiological components, consistently exceeds the very high CCT target of 98.5%. (Overall compliance percentages of continuous sampling and analysis are released on a monthly basis.