



Headline Statistics

WCWSS DAM STORAGE (%)

76.9

WEEKLY DAM LEVEL CHANGE (%)

-1.80

AVERAGE TOTAL DAILY WATER USE (MLD)

980

Water Resource Status

WATER RESOURCE STATUS	MEANING OF CURRENT STATUS
Wise Water Use	<p>Although early winter rains have been above average, the City will continue to monitor these levels. It is important to continue using water wisely.</p> <p>Note: The Water Resource status is updated every three (3) months. It will next be updated in February.</p>

Water Production from Different Sources

MAJOR DAMS (MLD)

979

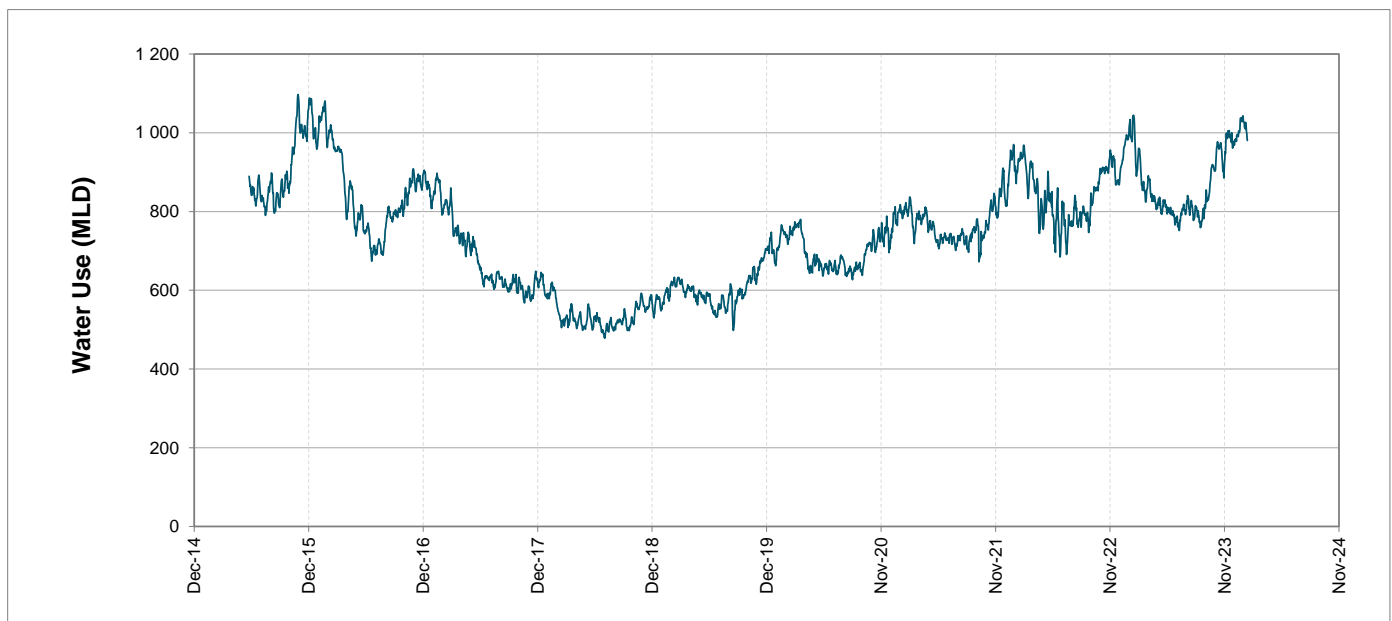
MINOR DAMS (MLD)

1

GROUND WATER AND SPRINGS (MLD)

0

Overall Water Usage Trend (2010 - Present)



WCWSS means Western Cape Water Supply System

MLD means million litres per day

More information on Water Saving and Restrictions is available on the City of Cape Town's 'ThinkWater' website

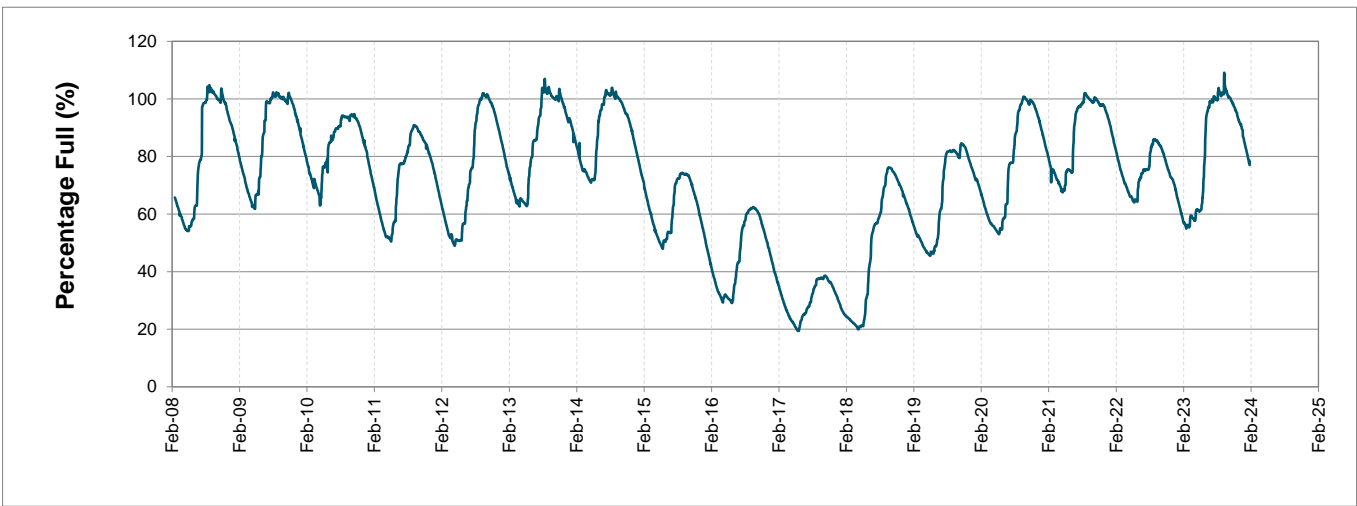
Water Stored in Major Dams (WCWSS)

Overall Percentage Full **76.9%**

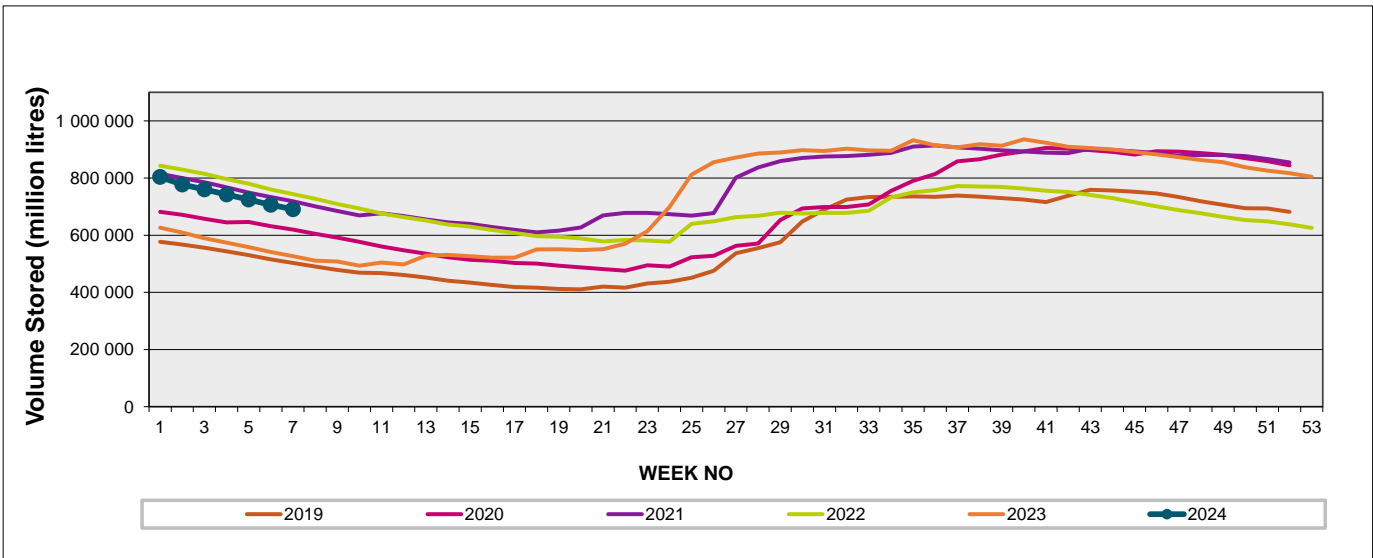
Weekly Change **-1.8%**

MAJOR DAMS (WCWSS)	STORAGE						
	CAPACITY	%	%	%	%	%	%
	MI	12 February 2024	Previous week	2023	2022	2021	2020
BERG RIVER	130 010	80.2	81.7	74.8	84.7	80.8	82.0
STEENBRAS LOWER	33 517	70.5	71.9	58.7	78.0	75.1	73.8
STEENBRAS UPPER	31 767	95.9	96.0	90.2	93.4	60.7	99.1
THEEWATERSKLOOF	480 188	75.5	77.3	55.3	85.5	84.5	62.1
VOËLVLEI	164 095	72.9	74.7	44.4	78.3	75.6	69.4
WEMMERSHOEK	58 644	85.5	89.0	72.7	74.0	81.3	68.6
TOTAL STORED	898 221	690 839	706 516	526 740	748 478	726 826	615 320
% STORAGE		76.9%	78.7%	58.6%	83.3%	80.9%	68.5%

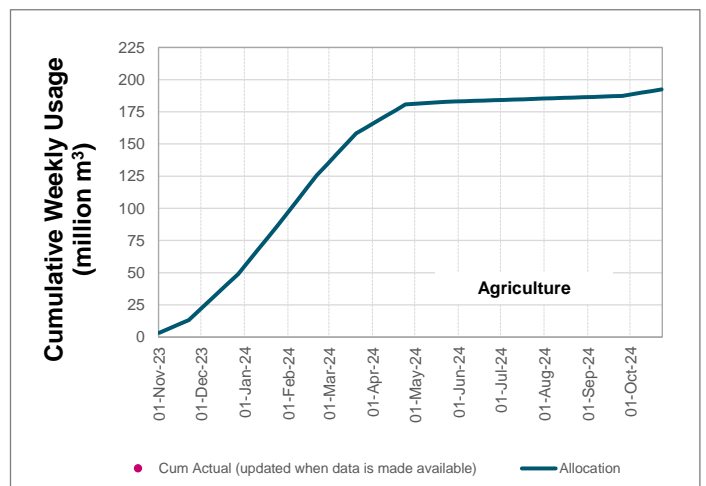
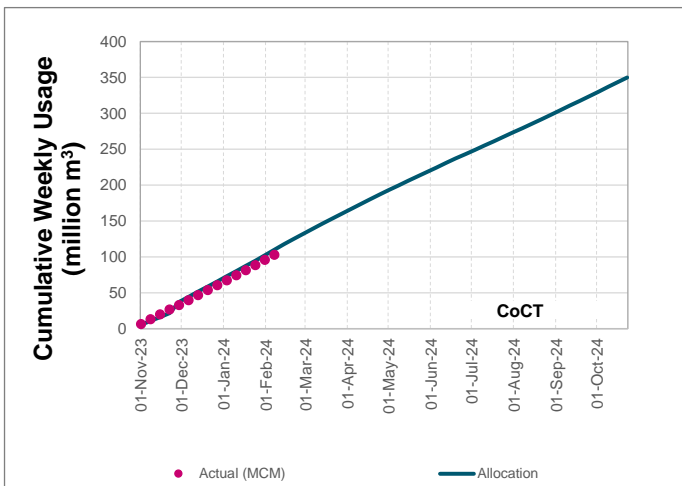
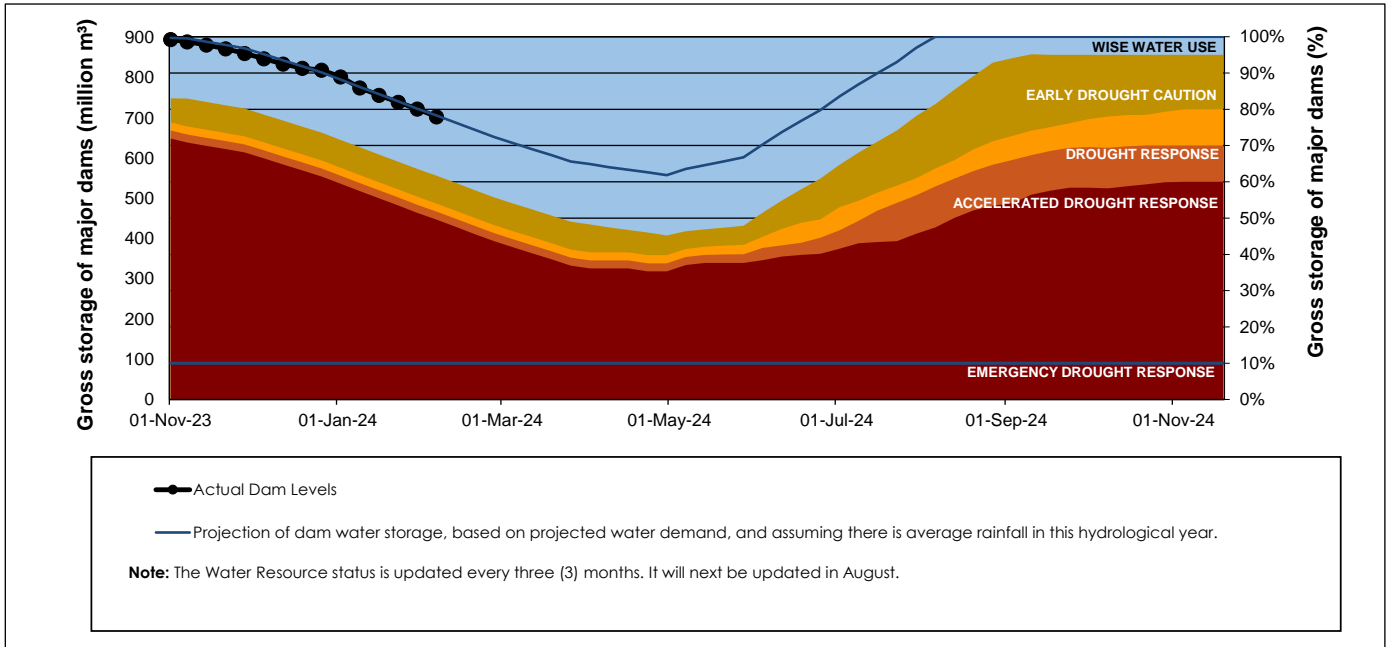
WCWSS Storage Record (2008 - Present)



WCWSS Comparative Storage Graph



Projected WCWSS Dam Storage Levels



Water Stored in Minor Dams

Overall Percentage Full **55.4**

Weekly Change **-0.95**

MINOR DAMS	STORAGE						
	CAPACITY	%	%	%	%	%	%
	MI	12 February 2024	Previous week	2023	2022	2021	2020
ALEXANDRA (Table Mountain)	126	41.9	42.7	45.2	68.0	52.1	37.5
DE VILLIERS (Table Mountain)	243	97.0	96.4	80.5	64.1	50.3	97.1
HELY-HUTCHINSON (Table Mount)	925	36.0	36.3	2.2	42.9	31.8	35.4
KLEINPLAATS (Simon's Town)	1 368	61.9	63.5	34.3	69.9	71.5	55.2
LAND-EN-ZEEZICHT (Helderberg)	451	77.4	77.1	85.7	87.8	81.3	74.1
LEWIS GAY (Simon's Town)	182	59.8	54.4	49.4	64.5	55.6	7.0
VICTORIA (Table Mountain)	128	75.6	75.9	76.9	55.7	40.6	82.7
WOODHEAD (Table Mountain)	954	45.1	48.0	66.4	53.8	68.5	79.6
Total Stored	4 377	2424.0	2465.4	1943.8	2661.3	2598.8	2559.9
Percentages stored		55.4	56.3	44.4	60.8	59.4	58.5

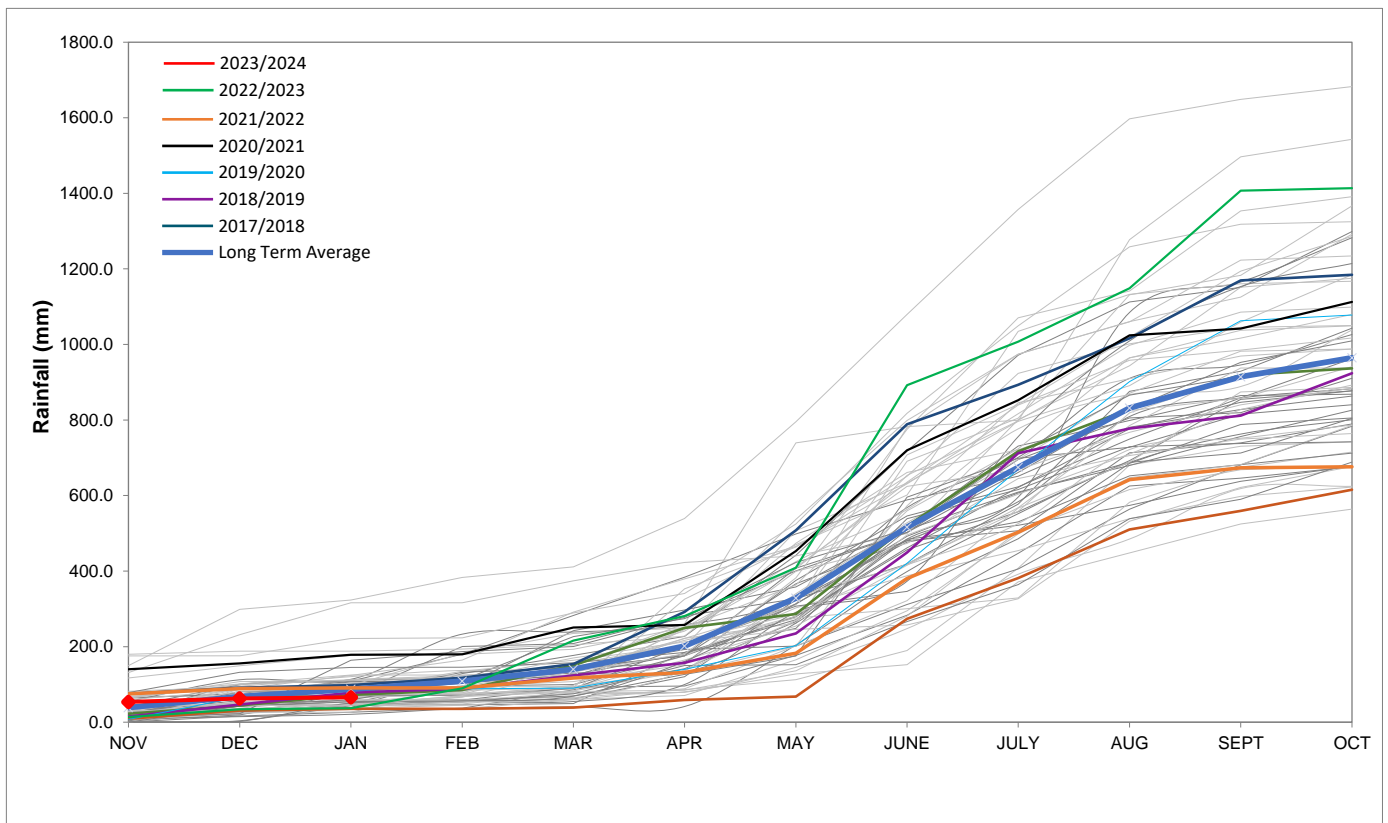
Rainfall Recorded

RAINFALL (mm)	05-Feb	06-Feb	07-Feb	08-Feb	09-Feb	10-Feb	11-Feb	Feb	
								Total*	LT Average
Blackheath Upper	0.0	0.0	0.0	0.0	0.0	0.0	0.0	0.0	15.1
Brooklands	0.0	0.0	2.0	0.0	0.0	0.0	0.0	4.0	19.2
Newlands	0.0	3.5	0.0	0.0	0.0	0.0	0.0	3.5	29.1
Steenbras	0.0	2.7	0.0	0.0	3.0	0.0	0.0	5.7	27.0
Table Mountain (Woodhead)	0.0	0.0	0.0	0.0	0.0	0.0	0.0	0.0	40.1
Theewaterskloof	0.0	0.0	0.0	0.0	0.0	0.0	0.0	0.0	22.6
Tygerberg	0.0	0.0	0.0	0.0	0.0	0.0	0.0	4.4	7.1
Voëlvlei	0.0	0.0	0.0	0.0	0.0	0.0	0.0	0.0	9.3
Wemmershoek	0.0	2.3	0.0	0.0	0.0	0.0	0.0	5.3	15.7
Wynberg	0.0	3.5	0.0	0.0	0.0	0.0	0.0	3.5	11.7

Notes: *Total/cummulative rainfall for month indicated above
LT: Long Term

Accumulated Monthly Rainfall at Wemmershoek

Note: Wemmershoek station used due to long record and mountainous location



Drinking Water Quality

SAMPLE PASS RATE

Month	Water Quality Compliance (%)	Target (%)
Nov-21	99.11	98
Dec-21	99.09	98
Jan-22	99.04	98
Feb-22	99.04	98
Mar-22	98.99	98
Apr-22	98.96	98
May-22	98.90	98
Jun-22	98.96	98
Jul-22	99.46	99
Aug-22	99.47	99
Sep-22	99.46	98.50
Oct-22	99.47	98.50
Nov-22	99.45	98.50
Dec-22	99.36	98.50
Jan-23	99.36	98.50
Feb-23	99.35	98.50
Mar-23	99.29	98.50
Apr-23	99.24	98.50
May-23	99.24	98.50
Jun-23	99.18	98.50
Jul-23	99.19	98.50
Aug-23	99.14	98.50
Sep-23	99.10	98.50
Oct-23	99.10	98.50
Nov-23	99.04	98.50
Dec-23	99.15	98.50

This table shows CCT drinking water quality compliance according to the South African National Standard 241:2015. Compliance, measured against all prescribed chemical and microbiological components, consistently exceeds the very high CCT target of 98.5%. (Overall compliance percentages of continuous sampling and analysis are released on a monthly basis.