



Headline Statistics

WCWSS DAM STORAGE (%)

**78.7**

WEEKLY DAM LEVEL CHANGE (%)

**-1.90**

AVERAGE TOTAL DAILY WATER USE (MLD)

**1010**

Water Resource Status

| WATER RESOURCE STATUS | MEANING OF CURRENT STATUS   |
|-----------------------|---|
| Wise Water Use        | <p>Although early winter rains have been above average, the City will continue to monitor these levels. It is important to continue using water wisely.</p> <p><b>Note:</b> The Water Resource status is updated every three (3) months. It will next be updated in February.</p> |

Water Production from Different Sources

MAJOR DAMS (MLD)

**1008**

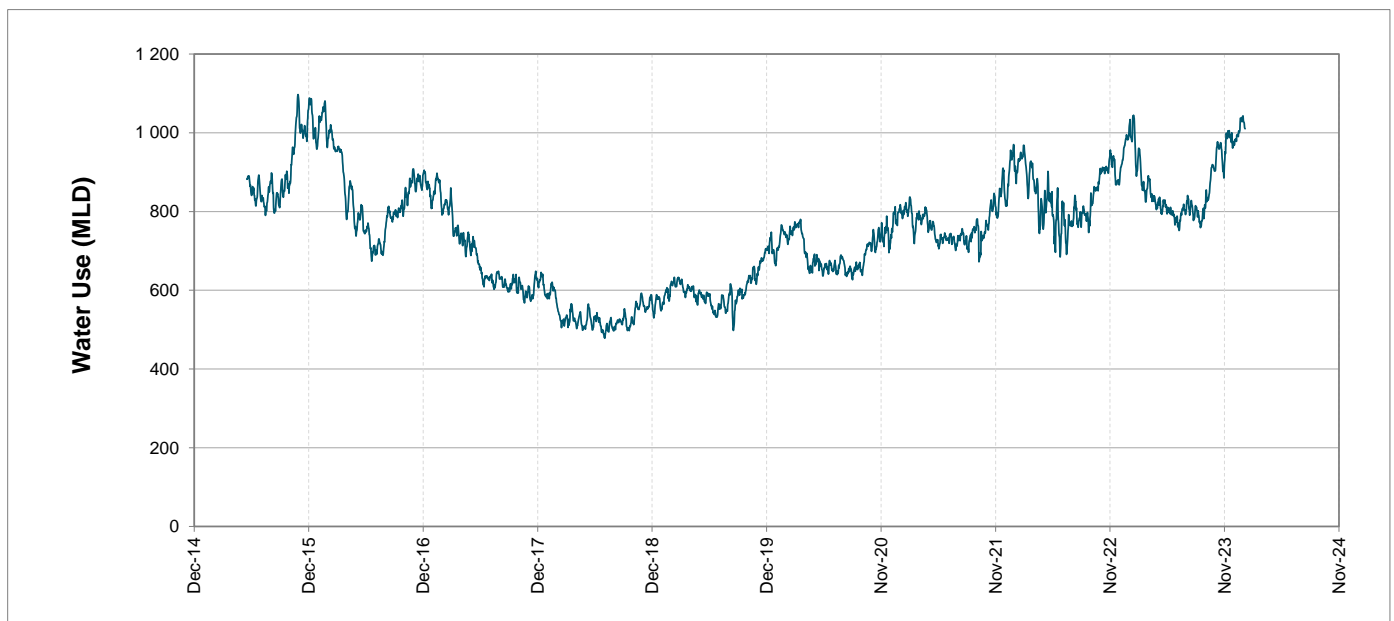
MINOR DAMS (MLD)

**1**

GROUND WATER AND SPRINGS (MLD)

**1**

Overall Water Usage Trend (2010 - Present)



WCWSS means Western Cape Water Supply System

MLD means million litres per day

More information on Water Saving and Restrictions is available on the City of Cape Town's 'ThinkWater' website

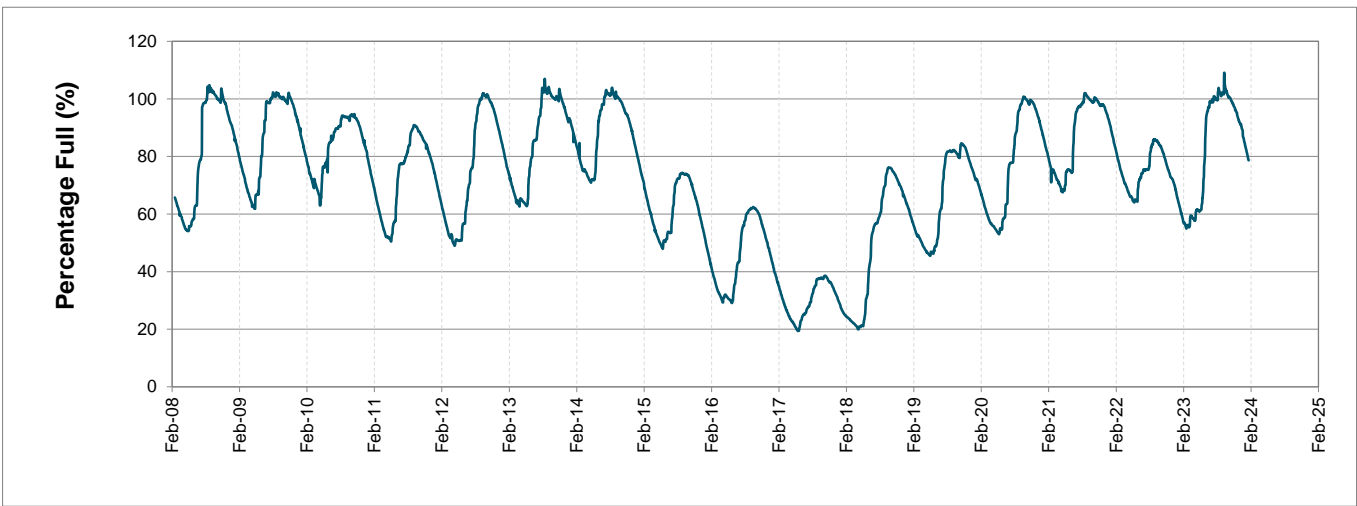
# Water Stored in Major Dams (WCWSS)

Overall Percentage Full **78.7%**

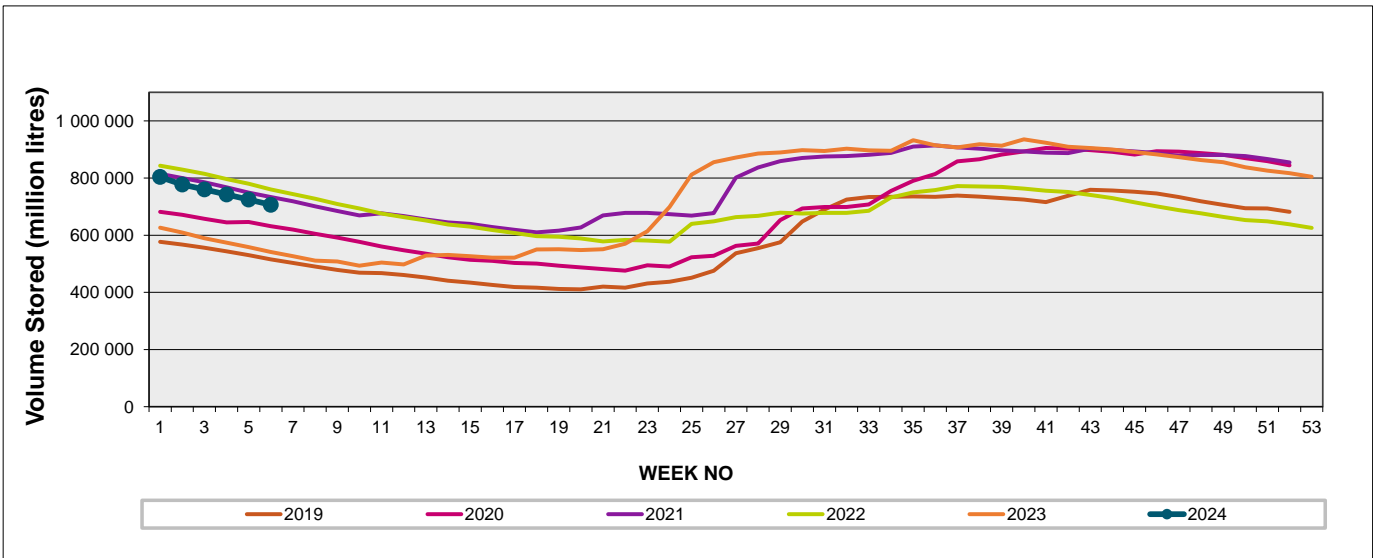
Weekly Change **-1.9%**

| MAJOR DAMS (WCWSS)  | STORAGE        |                  |                |                |                |                |                |
|---------------------|----------------|------------------|----------------|----------------|----------------|----------------|----------------|
|                     | CAPACITY       | %                | %              | %              | %              | %              | %              |
|                     | MI             | 05 February 2024 | Previous week  | 2023           | 2022           | 2021           | 2020           |
| BERG RIVER          | 130 010        | 81.7             | 83.8           | 77.1           | 86.8           | 82.7           | 83.5           |
| STEENBRAS LOWER     | 33 517         | 71.9             | 74.6           | 61.5           | 80.6           | 77.8           | 75.9           |
| STEENBRAS UPPER     | 31 767         | 96.0             | 94.0           | 92.1           | 88.8           | 57.1           | 99.3           |
| THEEWATERSKLOOF     | 480 188        | 77.3             | 79.3           | 56.7           | 87.3           | 86.0           | 63.5           |
| VOËLVLEI            | 164 095        | 74.7             | 76.7           | 45.8           | 80.1           | 77.0           | 71.0           |
| WEMMERSHOEK         | 58 644         | 89.0             | 92.2           | 74.5           | 76.2           | 83.2           | 70.8           |
| <b>TOTAL STORED</b> | <b>898 221</b> | <b>706 516</b>   | <b>724 313</b> | <b>541 053</b> | <b>763 348</b> | <b>739 962</b> | <b>628 641</b> |
| <b>% STORAGE</b>    |                | <b>78.7%</b>     | <b>80.6%</b>   | <b>60.2%</b>   | <b>85.0%</b>   | <b>82.4%</b>   | <b>70.0%</b>   |

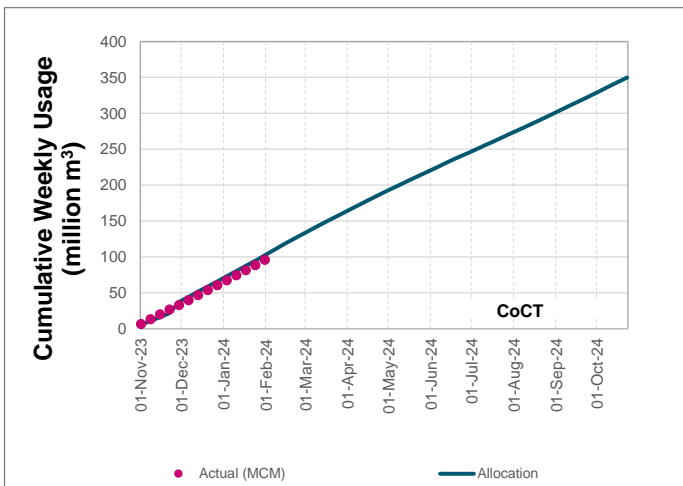
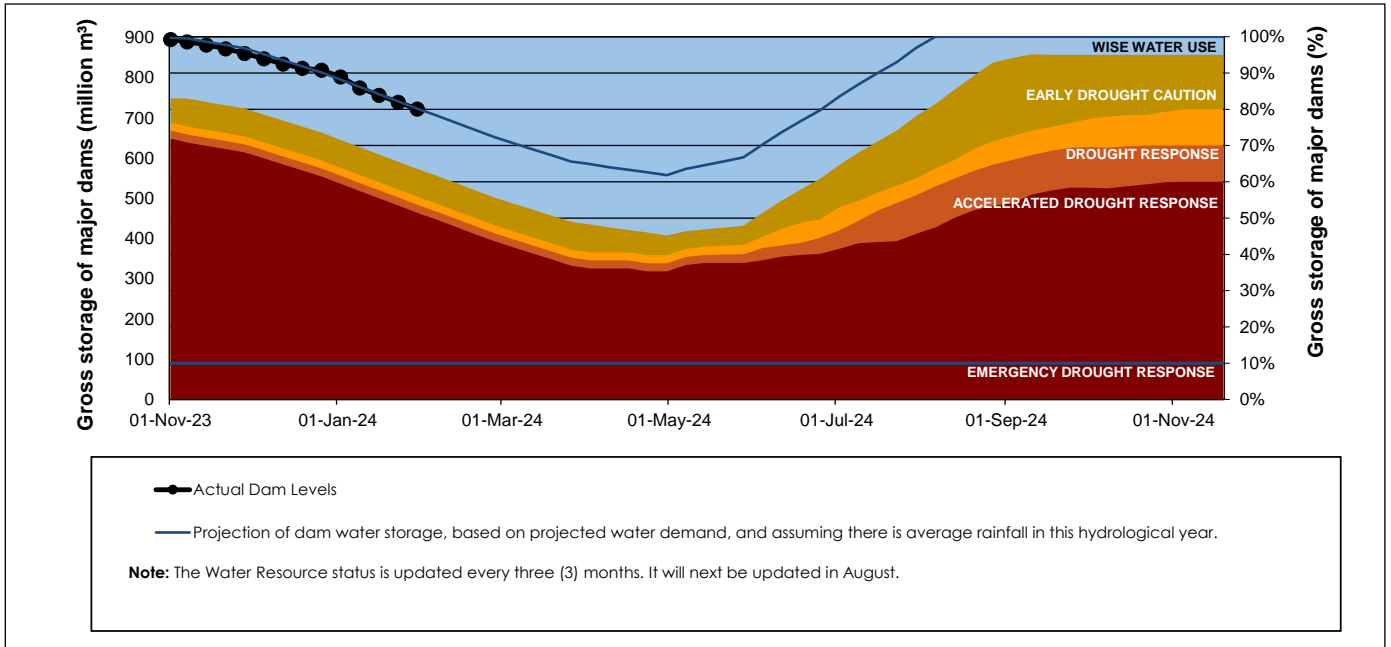
## WCWSS Storage Record (2008 - Present)



## WCWSS Comparative Storage Graph



# Projected WCWSS Dam Storage Levels



## Water Stored in Minor Dams

Overall Percentage Full **56.8**

Weekly Change **-2.75**

| MINOR DAMS                    | STORAGE      |                  |               |               |               |               |               |
|-------------------------------|--------------|------------------|---------------|---------------|---------------|---------------|---------------|
|                               | CAPACITY     | %                | %             | %             | %             | %             | %             |
|                               | MI           | 05 February 2024 | Previous week | 2023          | 2022          | 2021          | 2020          |
| ALEXANDRA (Table Mountain)    | 126          | 42.8             | 44.6          | 46.2          | 70.9          | 30.1          | 39.5          |
| DE VILLIERS (Table Mountain)  | 243          | 96.6             | 97.1          | 81.2          | 64.2          | 52.6          | 97.1          |
| HELY-HUTCHINSON (Table Mount) | 925          | 36.4             | 36.4          | 2.3           | 43.1          | 32.0          | 61.2          |
| KLEINPLAATS (Simon's Town)    | 1 368        | 63.5             | 66.0          | 36.0          | 71.3          | 73.0          | 58.0          |
| LAND-EN-ZEEZICHT (Helderberg) | 451          | 77.1             | 75.3          | 85.7          | 89.0          | 85.5          | 76.6          |
| LEWIS GAY (Simon's Town)      | 182          | 54.7             | 56.4          | 47.9          | 73.2          | 62.6          | 10.2          |
| VICTORIA (Table Mountain)     | 128          | 76.3             | 78.6          | 78.2          | 57.2          | 69.5          | 84.7          |
| WOODHEAD (Table Mountain)     | 954          | 49.8             | 59.0          | 75.0          | 54.3          | 78.5          | 60.9          |
| <b>Total Stored</b>           | <b>4 377</b> | <b>2485.0</b>    | <b>2605.5</b> | <b>2049.9</b> | <b>2712.4</b> | <b>2761.8</b> | <b>2678.4</b> |
| <b>Percentages stored</b>     |              | <b>56.8</b>      | <b>59.5</b>   | <b>46.8</b>   | <b>62.0</b>   | <b>63.1</b>   | <b>61.2</b>   |

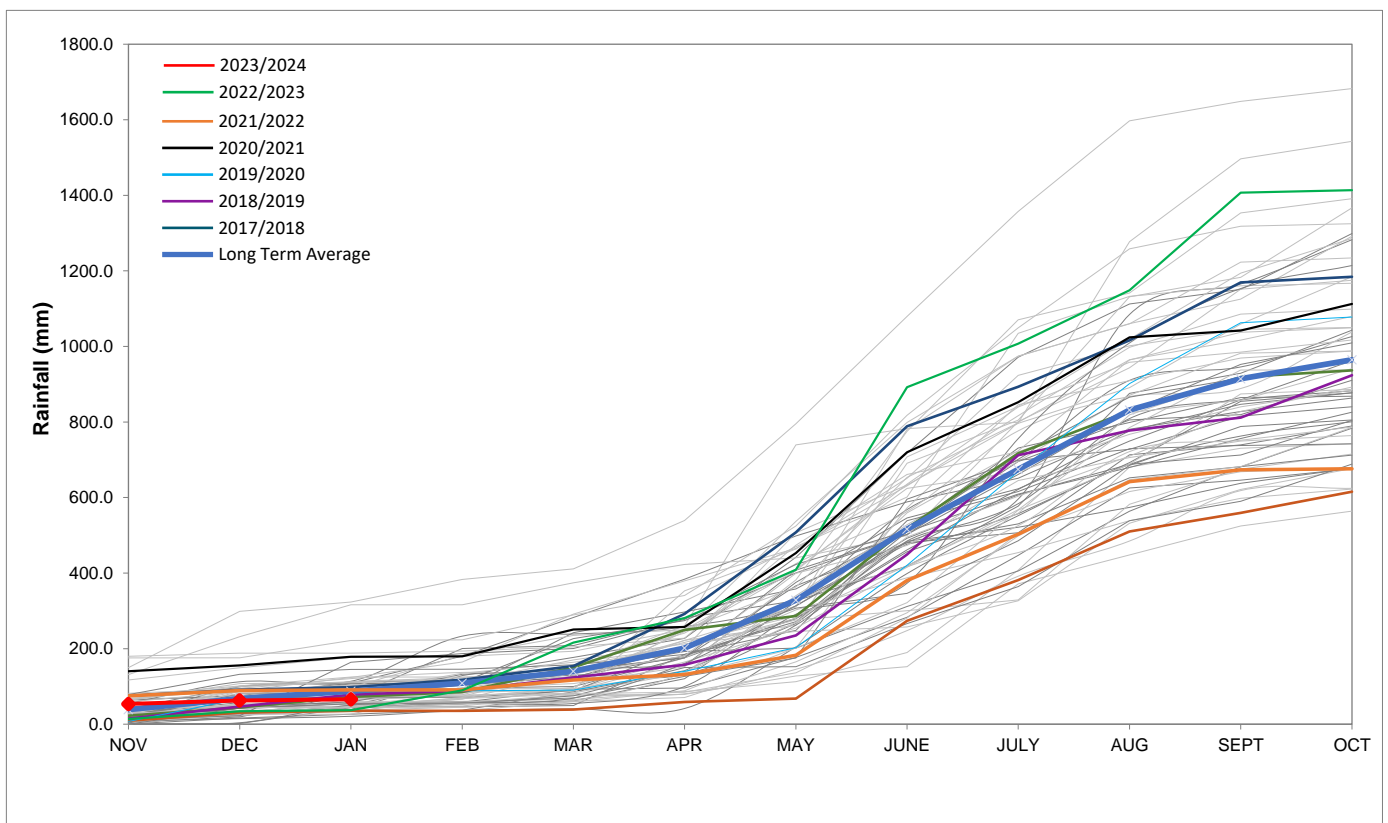
## Rainfall Recorded

| RAINFALL (mm)             | 29-Jan | 30-Jan | 31-Jan | 01-Feb | 02-Feb | 03-Feb | 04-Feb | Feb    |            |
|---------------------------|--------|--------|--------|--------|--------|--------|--------|--------|------------|
|                           |        |        |        |        |        |        |        | Total* | LT Average |
| Blackheath Upper          | 0.0    | 0.0    | 0.0    | 0.0    | 0.0    | 0.0    | 0.0    | 0.0    | 15.1       |
| Brooklands                | 0.0    | 0.0    | 0.0    | 0.0    | 0.0    | 2.0    | 0.0    | 2.0    | 19.2       |
| Newlands                  | 3.0    | 0.0    | 0.0    | 0.0    | 0.0    | 0.0    | 0.0    | 0.0    | 29.1       |
| Steenbras                 | 3.7    | 0.0    | 0.0    | 0.0    | 0.0    | 0.0    | 0.0    | 0.0    | 27.0       |
| Table Mountain (Woodhead) | 1.5    | 0.0    | 0.0    | 0.0    | 0.0    | 0.0    | 0.0    | 0.0    | 40.1       |
| Theewaterskloof           | 0.0    | 0.0    | 0.0    | 0.0    | 0.0    | 0.0    | 0.0    | 0.0    | 22.6       |
| Tygerberg                 | 0.0    | 0.0    | 0.0    | 0.0    | 4.4    | 0.0    | 0.0    | 4.4    | 7.1        |
| Voëlvlei                  | 0.0    | 0.0    | 0.0    | 0.0    | 0.0    | 0.0    | 0.0    | 0.0    | 9.3        |
| Wemmershoek               | 3.0    | 0.0    | 0.0    | 0.0    | 3.0    | 0.0    | 0.0    | 3.0    | 15.7       |
| Wynberg                   | 0.0    | 0.0    | 0.0    | 0.0    | 0.0    | 0.0    | 0.0    | 0.0    | 11.7       |

Notes: \*Total/cummulative rainfall for month indicated above  
LT: Long Term

## Accumulated Monthly Rainfall at Wemmershoek

Note: Wemmershoek station used due to long record and mountainous location



## Drinking Water Quality

### SAMPLE PASS RATE

| Month  | Water Quality Compliance (%) | Target (%) |
|--------|------------------------------|------------|
| Nov-21 | 99.11                        | 98         |
| Dec-21 | 99.09                        | 98         |
| Jan-22 | 99.04                        | 98         |
| Feb-22 | 99.04                        | 98         |
| Mar-22 | 98.99                        | 98         |
| Apr-22 | 98.96                        | 98         |
| May-22 | 98.90                        | 98         |
| Jun-22 | 98.96                        | 98         |
| Jul-22 | 99.46                        | 99         |
| Aug-22 | 99.47                        | 99         |
| Sep-22 | 99.46                        | 98.50      |
| Oct-22 | 99.47                        | 98.50      |
| Nov-22 | 99.45                        | 98.50      |
| Dec-22 | 99.36                        | 98.50      |
| Jan-23 | 99.36                        | 98.50      |
| Feb-23 | 99.35                        | 98.50      |
| Mar-23 | 99.29                        | 98.50      |
| Apr-23 | 99.24                        | 98.50      |
| May-23 | 99.24                        | 98.50      |
| Jun-23 | 99.18                        | 98.50      |
| Jul-23 | 99.19                        | 98.50      |
| Aug-23 | 99.14                        | 98.50      |
| Sep-23 | 99.10                        | 98.50      |
| Oct-23 | 99.10                        | 98.50      |
| Nov-23 | 99.04                        | 98.50      |
| Dec-23 | 99.15                        | 98.50      |

This table shows CCT drinking water quality compliance according to the South African National Standard 241:2015. Compliance, measured against all prescribed chemical and microbiological components, consistently exceeds the very high CCT target of 98.5%. (Overall compliance percentages of continuous sampling and analysis are released on a monthly basis.