



Headline Statistics

WCWSS DAM STORAGE (%)

**80.6**

WEEKLY DAM LEVEL CHANGE (%)

**-2.00**

AVERAGE TOTAL DAILY WATER USE (MLD)

**1043**

Water Resource Status

WATER RESOURCE STATUS	MEANING OF CURRENT STATUS
Wise Water Use	<p>Although early winter rains have been above average, the City will continue to monitor these levels. It is important to continue using water wisely.</p> <p><b>Note:</b> The Water Resource status is updated every three (3) months. It will next be updated in February.</p>

Water Production from Different Sources

MAJOR DAMS (MLD)

**1039**

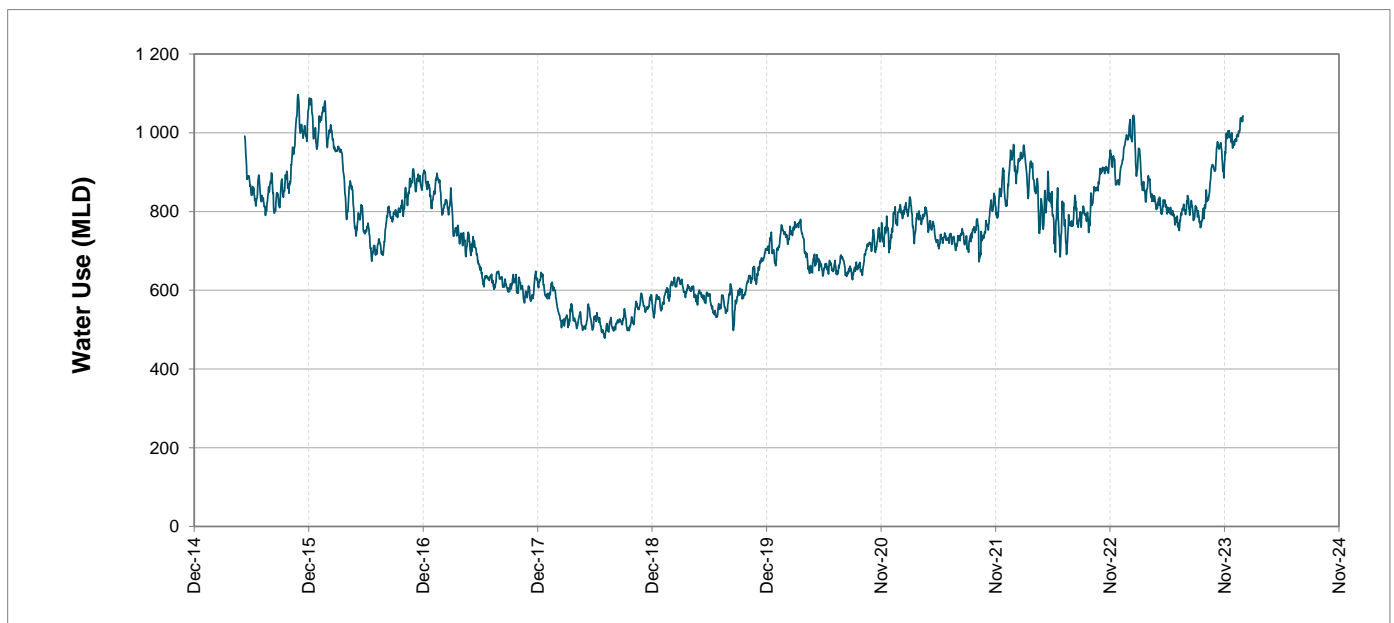
MINOR DAMS (MLD)

**1**

GROUND WATER AND SPRINGS (MLD)

**3**

Overall Water Usage Trend (2010 - Present)



WCWSS means Western Cape Water Supply System

MLD means million litres per day

More information on Water Saving and Restrictions is available on the City of Cape Town's 'ThinkWater' website

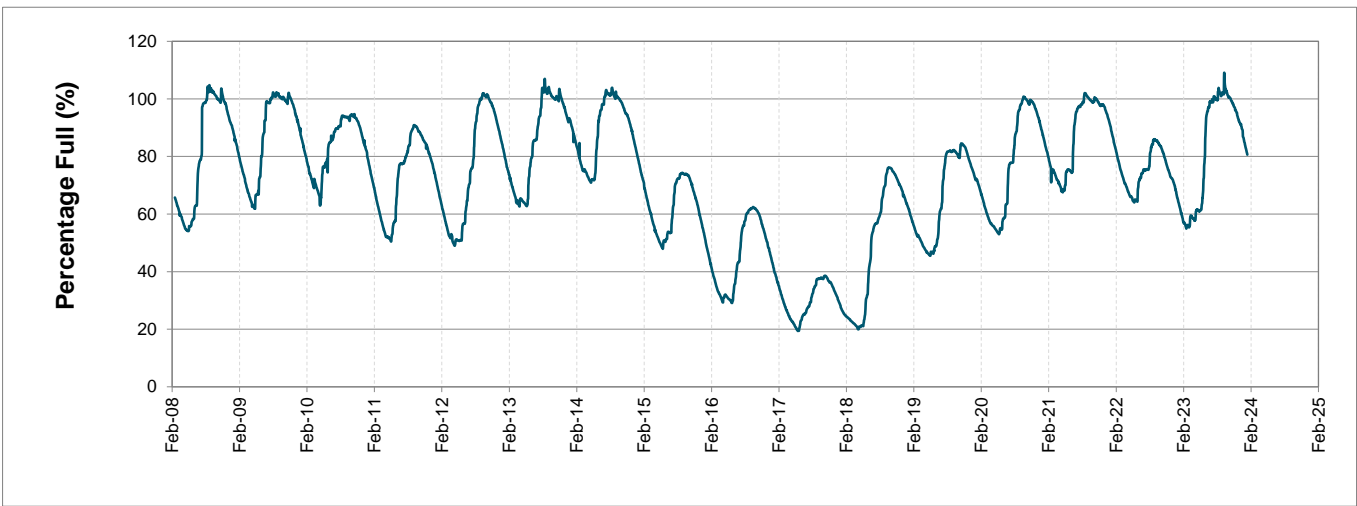
# Water Stored in Major Dams (WCWSS)

Overall Percentage Full **80.6%**

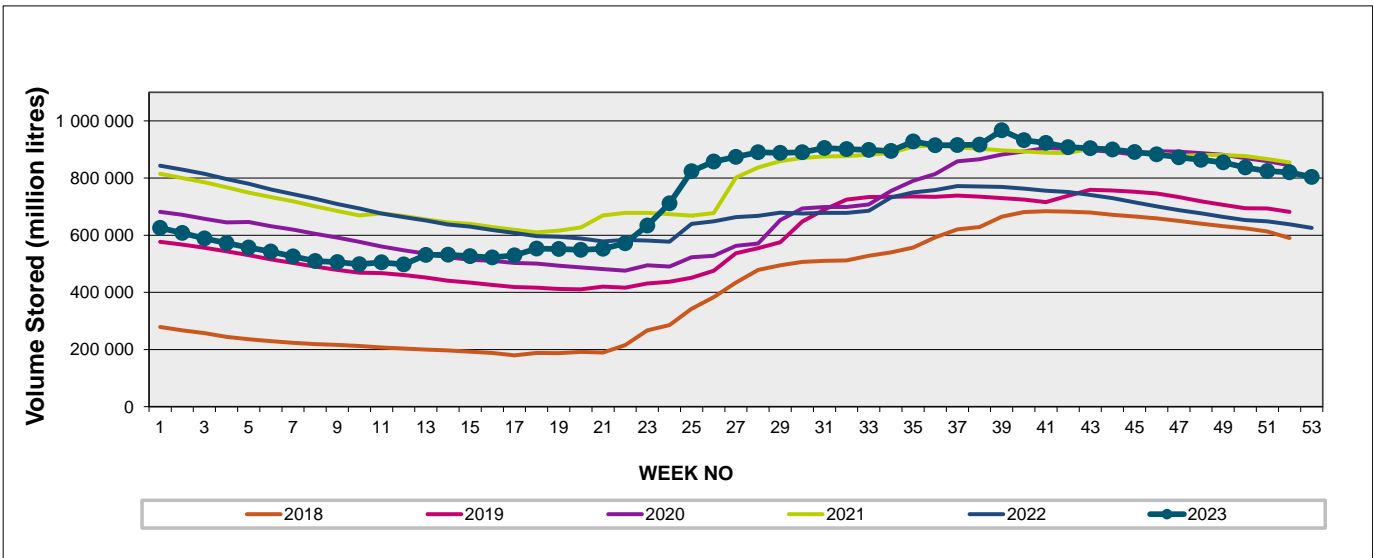
Weekly Change **-2.0%**

MAJOR DAMS (WCWSS)	STORAGE						
	CAPACITY	%	%	%	%	%	%
	MI	29 January 2024	Previous week	2023	2022	2021	2020
BERG RIVER	130 010	83.8	86.4	79.4	88.9	84.8	85.0
STEENBRAS LOWER	33 517	74.6	79.3	62.9	82.0	80.0	78.3
STEENBRAS UPPER	31 767	94.0	97.0	92.4	92.6	60.9	99.6
THEEWATERSKLOOF	480 188	79.3	80.8	58.6	89.2	87.5	64.8
VOËLVLEI	164 095	76.7	79.0	48.2	82.8	79.6	72.4
WEMMERSHOEK	58 644	92.2	93.9	75.7	78.4	84.9	72.5
<b>TOTAL STORED</b>	<b>898 221</b>	<b>724 313</b>	<b>742 241</b>	<b>558 456</b>	<b>782 892</b>	<b>756 838</b>	<b>641 120</b>
<b>% STORAGE</b>		<b>80.6%</b>	<b>82.6%</b>	<b>62.2%</b>	<b>87.2%</b>	<b>84.3%</b>	<b>71.4%</b>

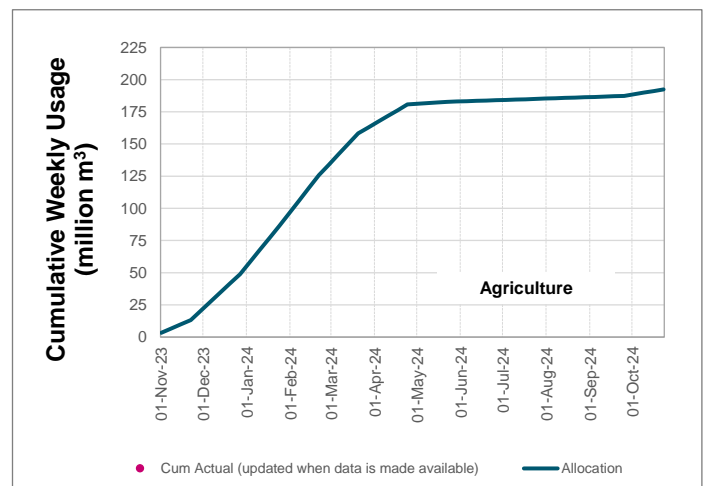
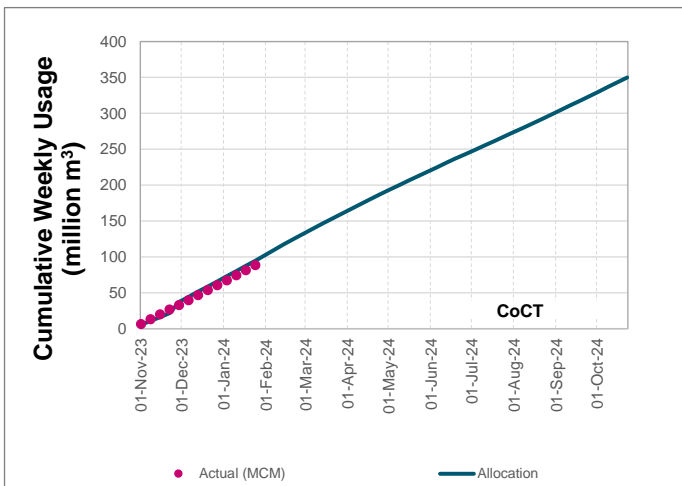
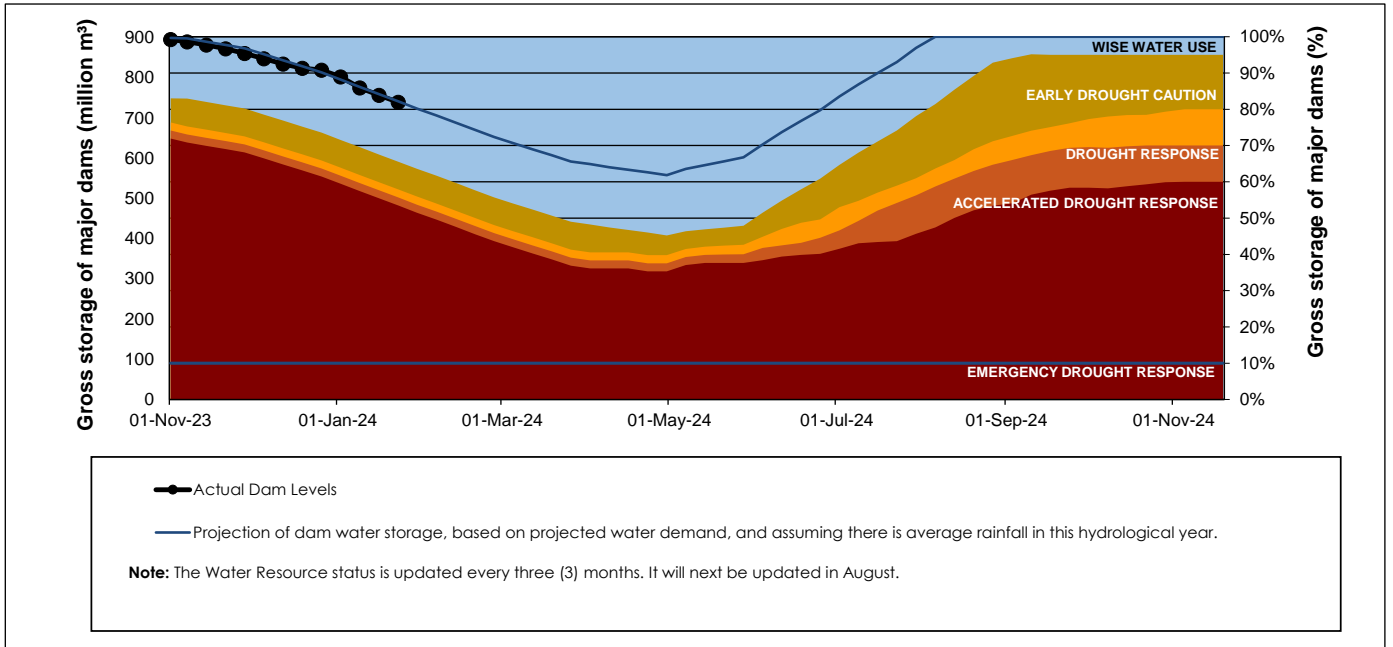
## WCWSS Storage Record (2008 - Present)



## WCWSS Comparative Storage Graph



# Projected WCWSS Dam Storage Levels



## Water Stored in Minor Dams

Overall Percentage Full **59.3**

Weekly Change **-3.15**

MINOR DAMS	STORAGE						
	CAPACITY	%	%	%	%	%	%
	MI	29 January 2024	Previous week	2023	2022	2021	2020
ALEXANDRA (Table Mountain)	126	44.6	46.2	47.6	73.3	29.1	41.0
DE VILLIERS (Table Mountain)	243	97.1	98.1	81.5	61.6	51.5	98.6
HELY-HUTCHINSON (Table Mount)	925	36.4	38.9	2.1	41.9	30.7	64.2
KLEINPLAATS (Simon's Town)	1 368	66.0	67.7	37.7	72.9	74.6	60.8
LAND-EN-ZEEZICHT (Helderberg)	451	75.3	76.1	86.4	90.3	86.1	78.6
LEWIS GAY (Simon's Town)	182	56.4	59.5	50.7	77.1	68.5	12.9
VICTORIA (Table Mountain)	128	78.2	79.6	80.6	58.0	86.5	87.1
WOODHEAD (Table Mountain)	954	58.2	66.3	78.8	52.5	87.6	66.6
<b>Total Stored</b>	<b>4 377</b>	<b>2597.0</b>	<b>2735.1</b>	<b>2120.1</b>	<b>2715.5</b>	<b>2888.7</b>	<b>2819.7</b>
<b>Percentages stored</b>		<b>59.3</b>	<b>62.5</b>	<b>48.4</b>	<b>62.0</b>	<b>66.0</b>	<b>64.4</b>

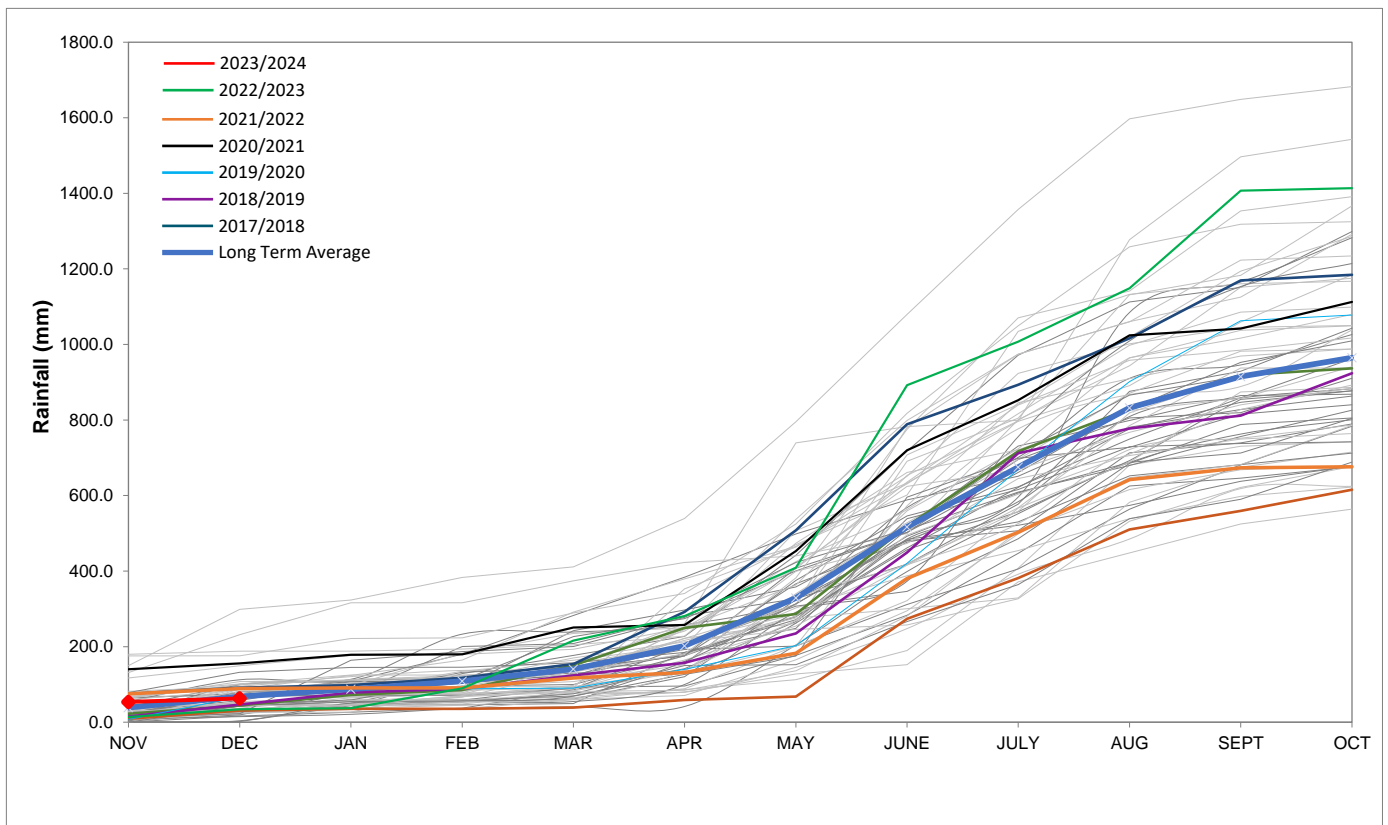
# Rainfall Recorded

RAINFALL (mm)	22-Jan	23-Jan	24-Jan	25-Jan	26-Jan	27-Jan	28-Jan	Jan	
								Total*	LT Average
Blackheath Upper	0.0	0.0	0.0	0.0	0.0	0.0	0.0	0.0	15.3
Brooklands	0.0	0.0	0.0	0.0	0.0	0.0	0.0	0.0	27.7
Newlands	0.0	0.0	0.0	0.0	0.0	0.0	0.0	0.0	37.4
Steenbras	0.0	0.0	0.0	0.0	0.0	0.0	0.0	0.5	29.5
Table Mountain (Woodhead)	0.0	0.0	0.0	0.0	0.0	0.0	0.0	1.5	52.7
Theewaterskloof	1.9	0.0	0.0	0.0	0.0	0.0	0.0	12.9	24.9
Tygerberg	0.0	0.0	0.0	0.0	0.0	0.0	0.0	0.0	13.0
Voëlvlei	0.0	0.0	0.0	0.0	0.0	0.0	0.0	0.0	13.2
Wemmershoek	0.0	0.0	0.0	0.0	0.0	0.0	0.0	0.0	20.6
Wynberg	0.0	0.0	0.0	0.0	0.0	0.0	0.0	0.0	21.2

Notes: \*Total/cummulative rainfall for month indicated above  
LT: Long Term

# Accumulated Monthly Rainfall at Wemmershoek

Note: Wemmershoek station used due to long record and mountainous location



## Drinking Water Quality

### SAMPLE PASS RATE

Month	Water Quality Compliance (%)	Target (%)
Nov-21	99.11	98
Dec-21	99.09	98
Jan-22	99.04	98
Feb-22	99.04	98
Mar-22	98.99	98
Apr-22	98.96	98
May-22	98.90	98
Jun-22	98.96	98
Jul-22	99.46	99
Aug-22	99.47	99
Sep-22	99.46	98.50
Oct-22	99.47	98.50
Nov-22	99.45	98.50
Dec-22	99.36	98.50
Jan-23	99.36	98.50
Feb-23	99.35	98.50
Mar-23	99.29	98.50
Apr-23	99.24	98.50
May-23	99.24	98.50
Jun-23	99.18	98.50
Jul-23	99.19	98.50
Aug-23	99.14	98.50
Sep-23	99.10	98.50
Oct-23	99.10	98.50
Nov-23	99.04	98.50
Dec-23	99.15	98.50

This table shows CCT drinking water quality compliance according to the South African National Standard 241:2015. Compliance, measured against all prescribed chemical and microbiological components, consistently exceeds the very high CCT target of 98.5%. (Overall compliance percentages of continuous sampling and analysis are released on a monthly basis.