



Headline Statistics

WCWSS DAM STORAGE (%)

84.6

WEEKLY DAM LEVEL CHANGE (%)

-1.90

AVERAGE TOTAL DAILY WATER USE (MLD)

1003

Water Resource Status

WATER RESOURCE STATUS	MEANING OF CURRENT STATUS
Wise Water Use	<p>Although early winter rains have been above average, the City will continue to monitor these levels. It is important to continue using water wisely.</p> <p>Note: The Water Resource status is updated every three (3) months. It will next be updated in February.</p>

Water Production from Different Sources

MAJOR DAMS (MLD)

999

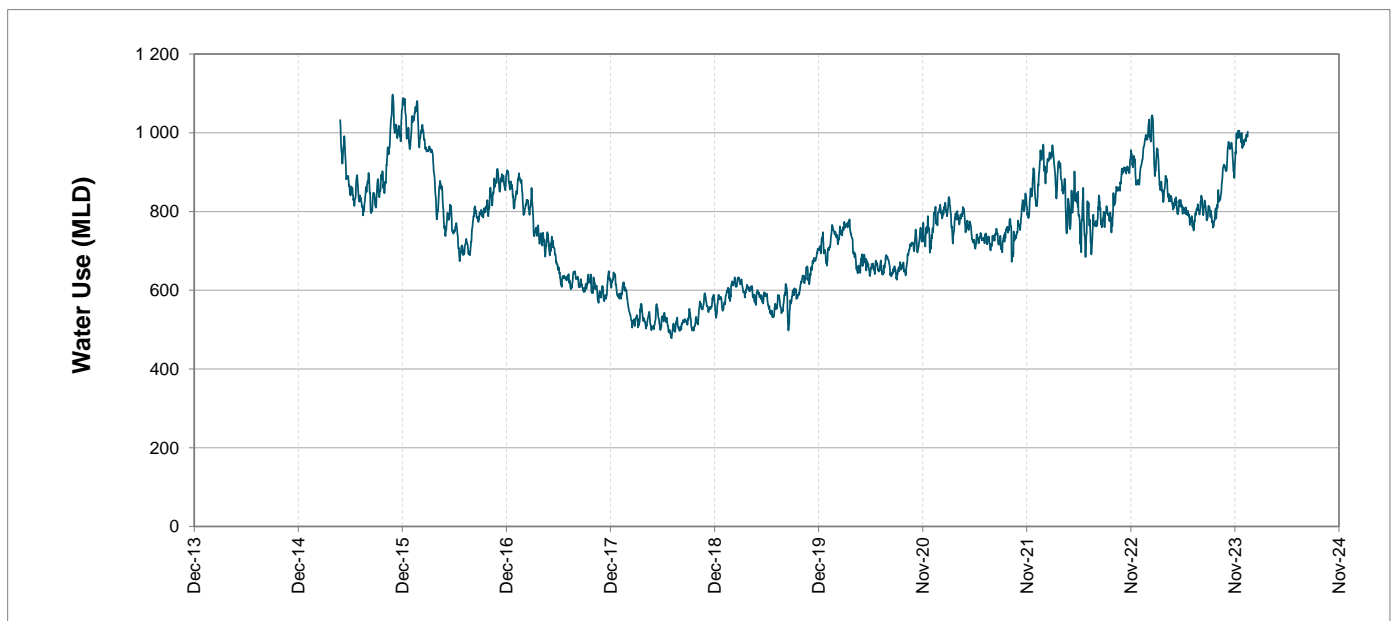
MINOR DAMS (MLD)

2

GROUND WATER AND SPRINGS (MLD)

2

Overall Water Usage Trend (2010 - Present)



WCWSS means Western Cape Water Supply System

MLD means million litres per day

More information on Water Saving and Restrictions is available on the City of Cape Town's 'ThinkWater' website

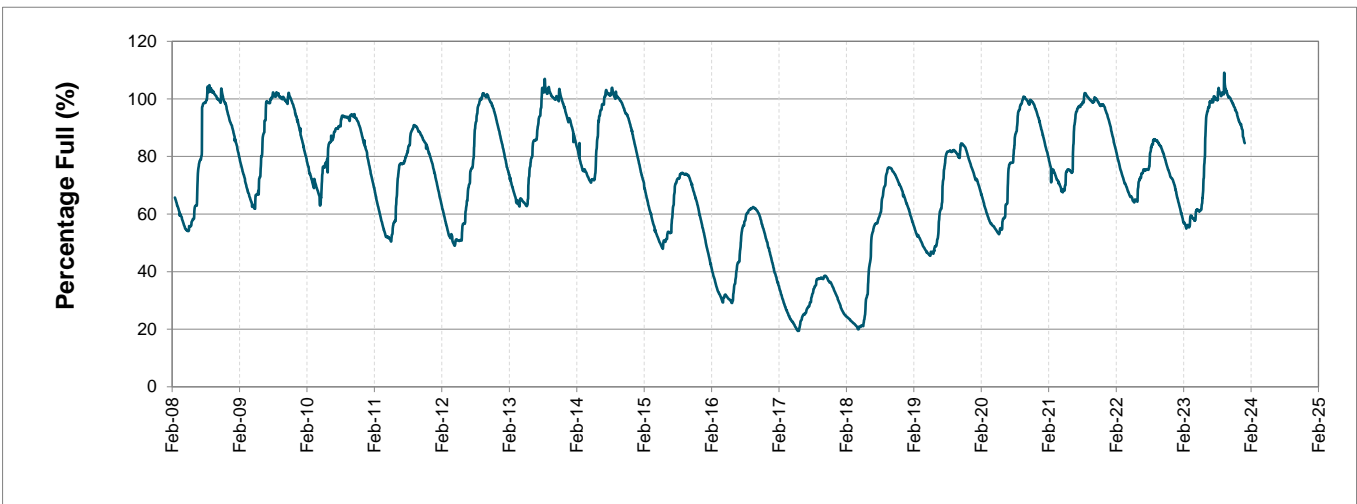
Water Stored in Major Dams (WCWSS)

Overall Percentage Full **84.6%**

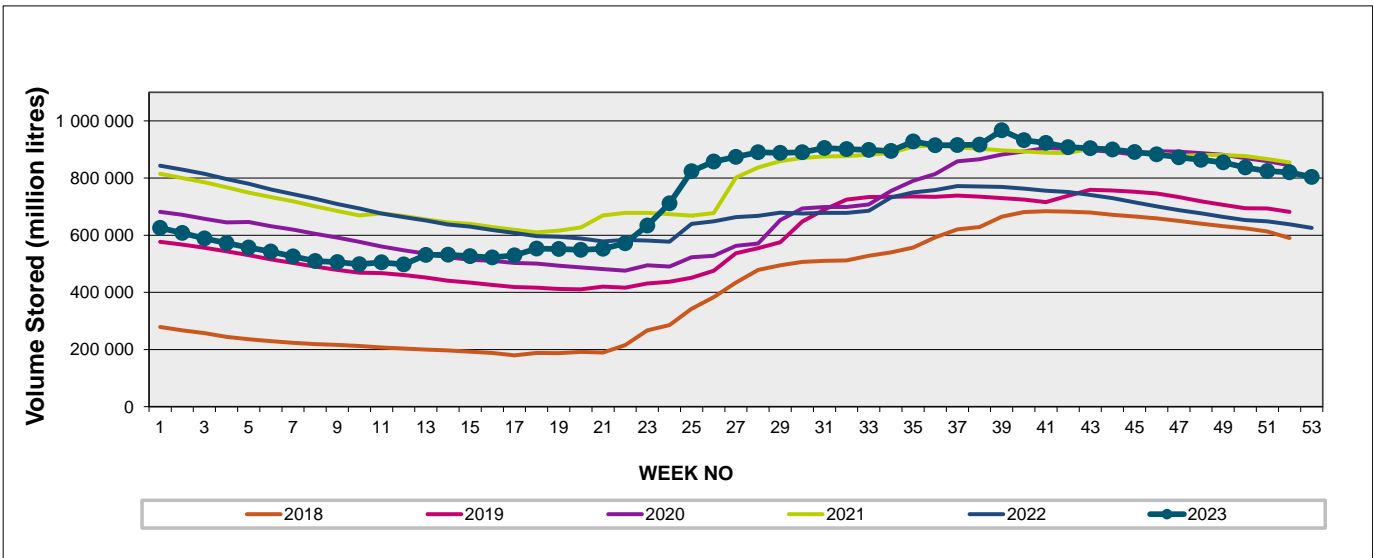
Weekly Change **-1.9%**

MAJOR DAMS (WCWSS)	STORAGE						
	CAPACITY	%	%	%	%	%	%
	MI	15 January 2024	Previous week	2023	2022	2021	2020
BERG RIVER	130 010	88.5	90.2	82.5	92.5	88.9	87.5
STEENBRAS LOWER	33 517	82.8	85.1	68.0	85.4	82.7	79.5
STEENBRAS UPPER	31 767	97.4	97.8	92.0	95.6	68.7	99.5
THEEWATERSKLOOF	480 188	82.6	84.2	62.1	93.4	90.8	64.5
VOËLVLEI	164 095	81.5	84.8	51.8	87.4	83.8	76.6
WEMMERSHOEK	58 644	96.0	97.4	79.3	82.1	88.4	76.6
TOTAL STORED	898 221	760 172	777 278	589 077	819 082	790 559	652 388
% STORAGE		84.6%	86.5%	65.6%	91.2%	88.0%	72.6%

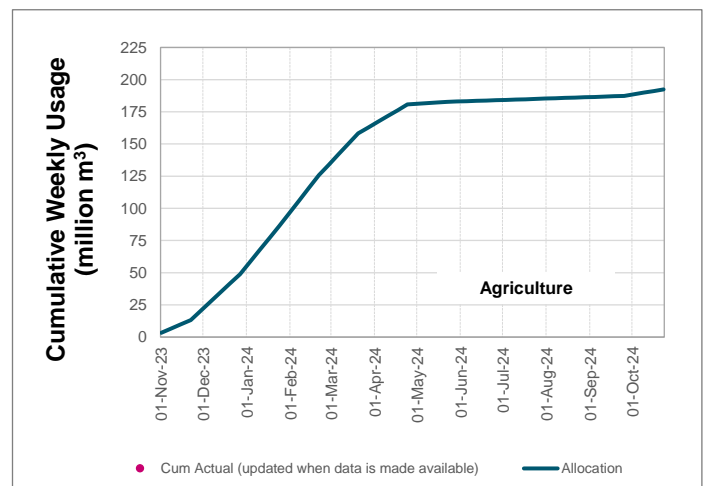
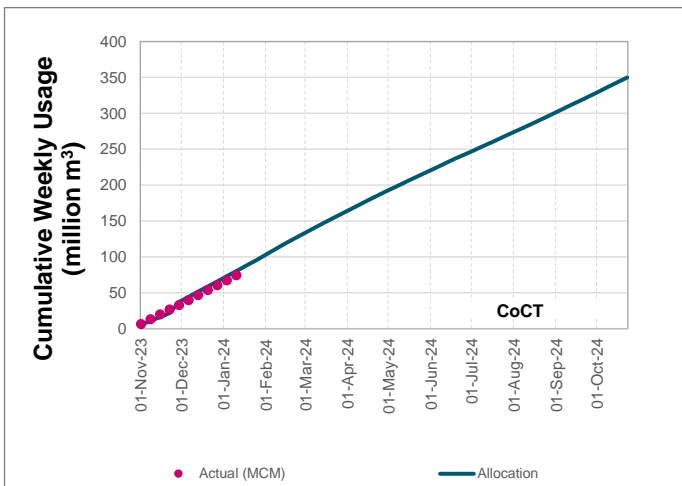
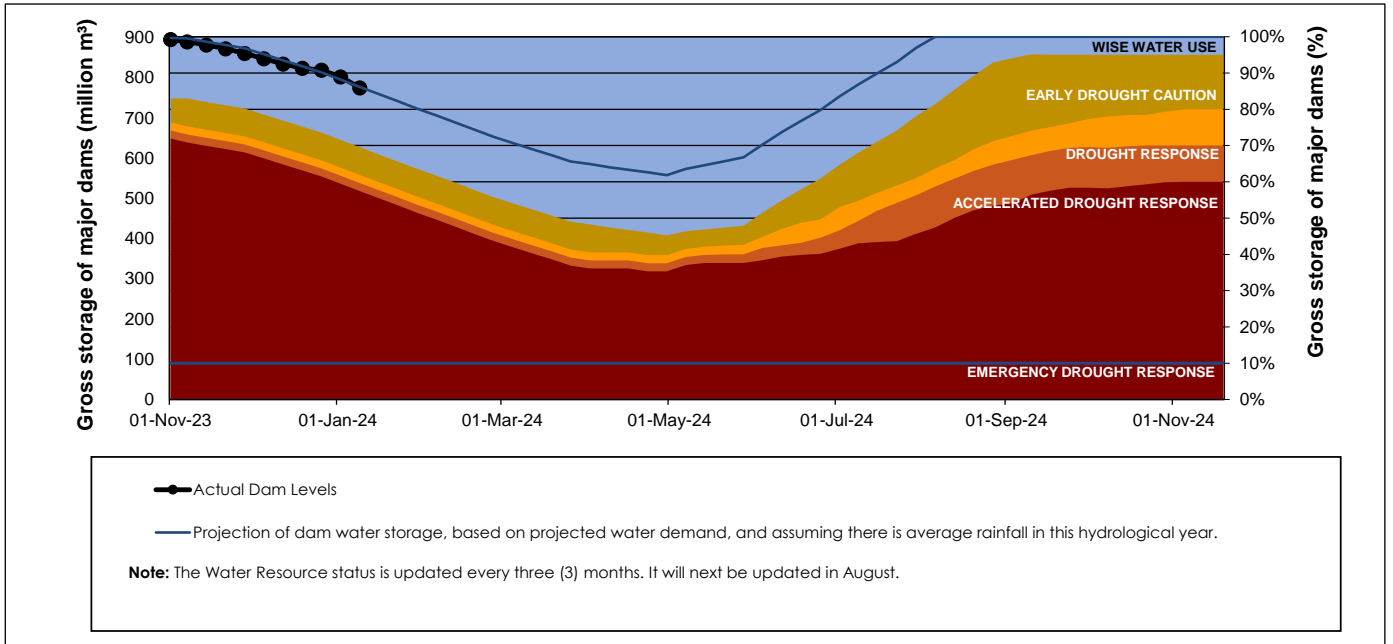
WCWSS Storage Record (2008 - Present)



WCWSS Comparative Storage Graph



Projected WCWSS Dam Storage Levels



Water Stored in Minor Dams

Overall Percentage Full **65.2**

Weekly Change **-2.83**

MINOR DAMS	STORAGE						
	CAPACITY	%	%	%	%	%	%
	MI	15 January 2024	Previous week	2023	2022	2021	2020
ALEXANDRA (Table Mountain)	126	48.1	49.5	50.1	78.3	54.4	44.3
DE VILLIERS (Table Mountain)	243	98.4	98.1	81.3	62.3	54.7	99.0
HELY-HUTCHINSON (Table Mount)	925	43.1	47.4	7.4	42.9	35.4	64.5
KLEINPLAATS (Simon's Town)	1 368	68.2	70.8	41.9	79.2	80.2	66.8
LAND-EN-ZEEZICHT (Helderberg)	451	77.4	80.8	86.7	93.3	87.9	83.0
LEWIS GAY (Simon's Town)	182	52.5	62.9	58.4	87.0	71.5	15.7
VICTORIA (Table Mountain)	128	103.8	83.7	103.8	59.9	89.7	89.3
WOODHEAD (Table Mountain)	954	70.7	75.1	84.3	73.8	75.2	71.0
Total Stored	4 377	2851.6	2975.5	2324.3	3051.5	2945.0	2976.6
Percentages stored		65.2	68.0	53.1	69.7	67.3	68.0

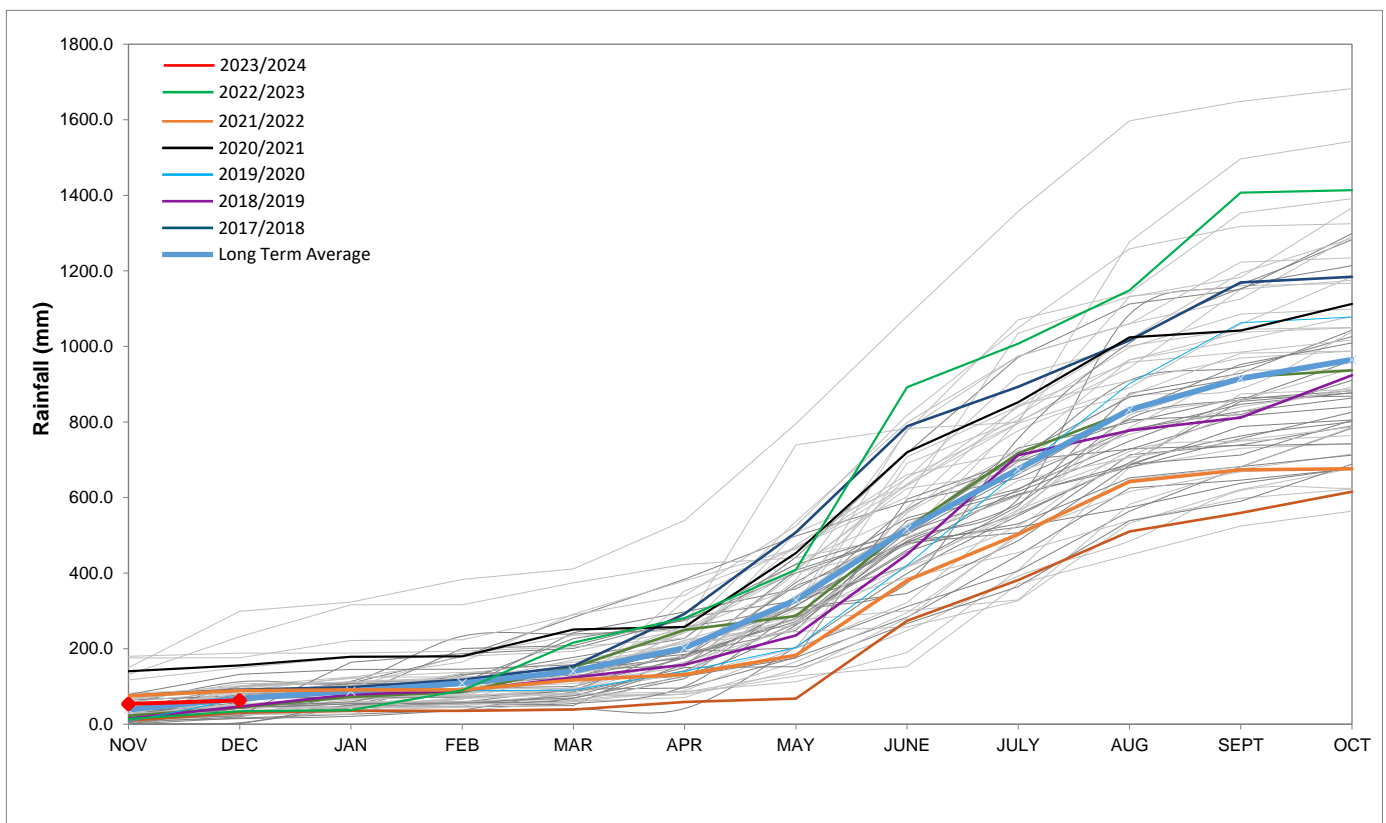
Rainfall Recorded

RAINFALL (mm)	08-Jan	09-Jan	10-Jan	11-Jan	12-Jan	13-Jan	14-Jan	Jan	
								Total*	LT Average
Blackheath Upper	0.0	0.0	0.0	0.0	0.0	0.0	0.0	0.0	15.3
Brooklands	0.0	0.0	0.0	0.0	0.0	0.0	0.0	0.0	27.7
Newlands	0.0	0.0	0.0	0.0	0.0	0.0	0.0	0.0	37.4
Steenbras	0.0	0.0	0.0	0.0	0.0	0.0	0.0	0.0	29.5
Table Mountain (Woodhead)	0.0	0.0	0.0	0.0	0.0	0.0	0.0	1.5	52.7
Theewaterskloof	0.0	0.0	2.0	0.0	0.0	0.0	0.0	9.0	24.9
Tygerberg	0.0	0.0	0.0	0.0	0.0	0.0	0.0	0.0	13.0
Voëlvlei	0.0	0.0	0.0	0.0	0.0	0.0	0.0	0.0	13.2
Wemmershoek	0.0	0.0	0.0	0.0	0.0	0.0	0.0	0.0	20.6
Wynberg	0.0	0.0	0.0	0.0	0.0	0.0	0.0	0.0	21.2

Notes: *Total/cummulative rainfall for month indicated above
LT: Long Term

Accumulated Monthly Rainfall at Wemmershoek

Note: Wemmershoek station used due to long record and mountainous location



Drinking Water Quality

SAMPLE PASS RATE

Month	Water Quality Compliance (%)	Target (%)
Nov-21	99.11	98
Dec-21	99.09	98
Jan-22	99.04	98
Feb-22	99.04	98
Mar-22	98.99	98
Apr-22	98.96	98
May-22	98.90	98
Jun-22	98.96	98
Jul-22	99.46	99
Aug-22	99.47	99
Sep-22	99.46	98.50
Oct-22	99.47	98.50
Nov-22	99.45	98.50
Dec-22	99.36	98.50
Jan-23	99.36	98.50
Feb-23	99.35	98.50
Mar-23	99.29	98.50
Apr-23	99.24	98.50
May-23	99.24	98.50
Jun-23	99.18	98.50
Jul-23	99.19	98.50
Aug-23	99.14	98.50
Sep-23	99.10	98.50
Oct-23	99.10	98.50
Nov-23	99.04	98.50
Dec-23	99.15	98.50

This table shows CCT drinking water quality compliance according to the South African National Standard 241:2015. Compliance, measured against all prescribed chemical and microbiological components, consistently exceeds the very high CCT target of 98.5%. (Overall compliance percentages of continuous sampling and analysis are released on a monthly basis.