



Headline Statistics

WCWSS DAM STORAGE (%)

86.5

WEEKLY DAM LEVEL CHANGE (%)

-3.00

AVERAGE TOTAL DAILY WATER USE (MLD)

978

Water Resource Status

WATER RESOURCE STATUS	MEANING OF CURRENT STATUS
Wise Water Use	<p>Although early winter rains have been above average, the City will continue to monitor these levels. It is important to continue using water wisely.</p> <p>Note: The Water Resource status is updated every three (3) months. It will next be updated in February.</p>

Water Production from Different Sources

MAJOR DAMS (MLD)

975

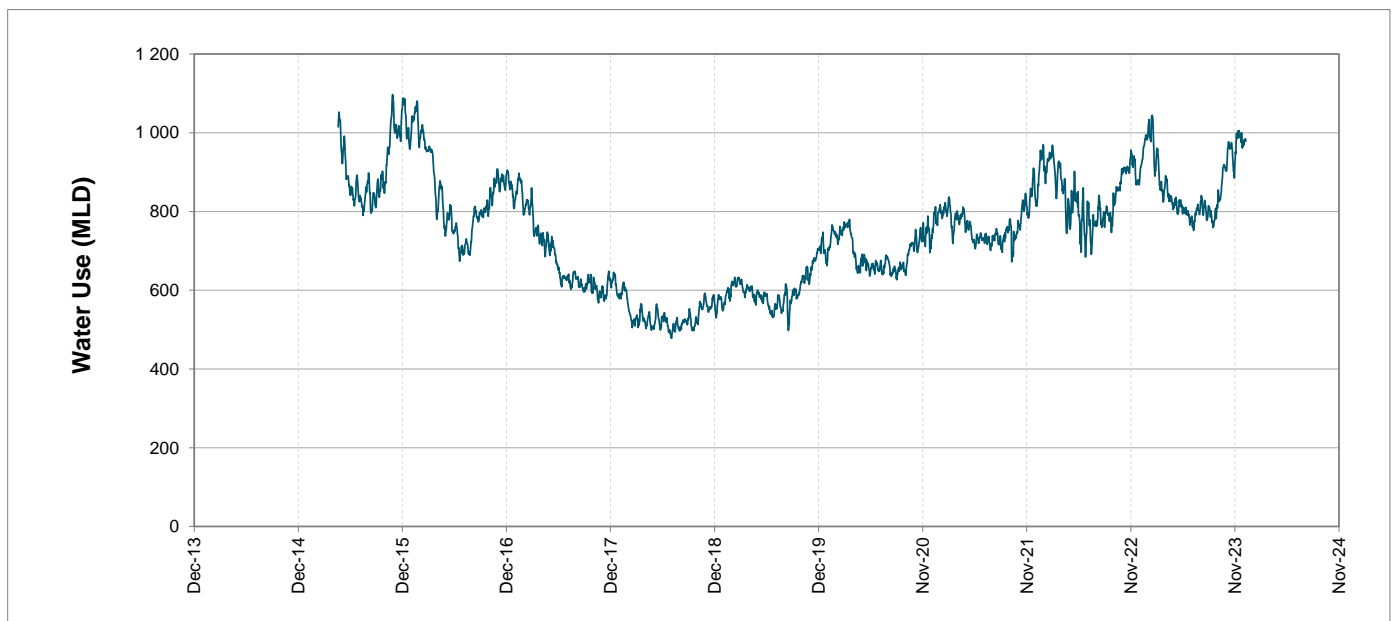
MINOR DAMS (MLD)

2

GROUND WATER AND SPRINGS (MLD)

1

Overall Water Usage Trend (2010 - Present)



WCWSS means Western Cape Water Supply System

MLD means million litres per day

More information on Water Saving and Restrictions is available on the City of Cape Town's 'ThinkWater' website

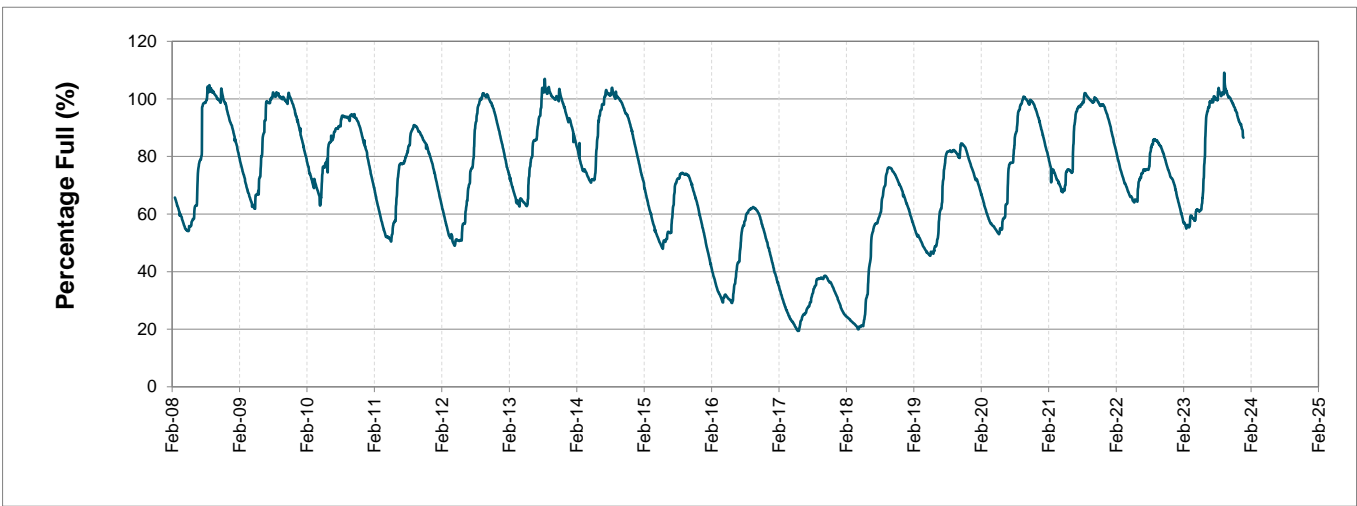
Water Stored in Major Dams (WCWSS)

Overall Percentage Full **86.5%**

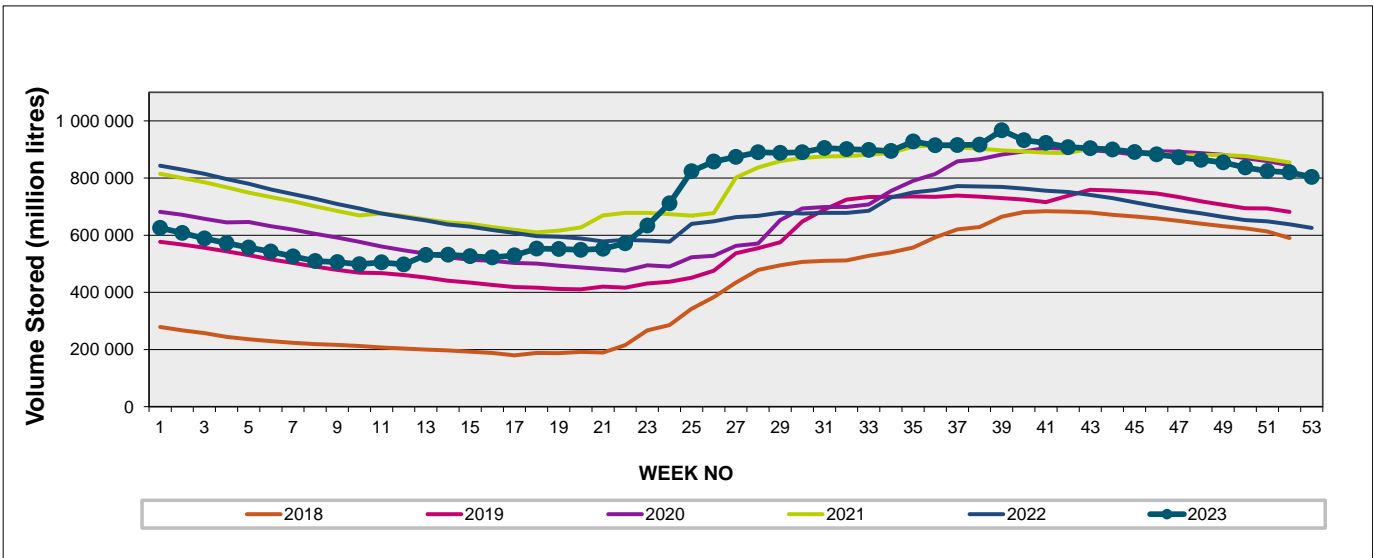
Weekly Change **-3.0%**

MAJOR DAMS (WCWSS)	STORAGE						
	CAPACITY	%	%	%	%	%	%
	MI	08 January 2024	Previous week	2023	2022	2021	2020
BERG RIVER	130 010	90.2	91.9	84.2	94.3	90.9	89.5
STEENBRAS LOWER	33 517	85.1	86.7	69.4	87.3	85.6	82.2
STEENBRAS UPPER	31 767	97.8	97.9	93.6	96.3	67.5	99.7
THEEWATERSKLOOF	480 188	84.2	88.4	64.5	94.9	92.2	65.9
VOËLVLEI	164 095	84.8	86.4	54.6	89.4	85.5	78.5
WEMMERSHOEK	58 644	97.4	98.6	80.8	84.1	90.3	78.7
TOTAL STORED	898 221	777 278	803 461	609 206	834 181	804 464	667 068
% STORAGE		86.5%	89.5%	67.8%	92.9%	89.6%	74.3%

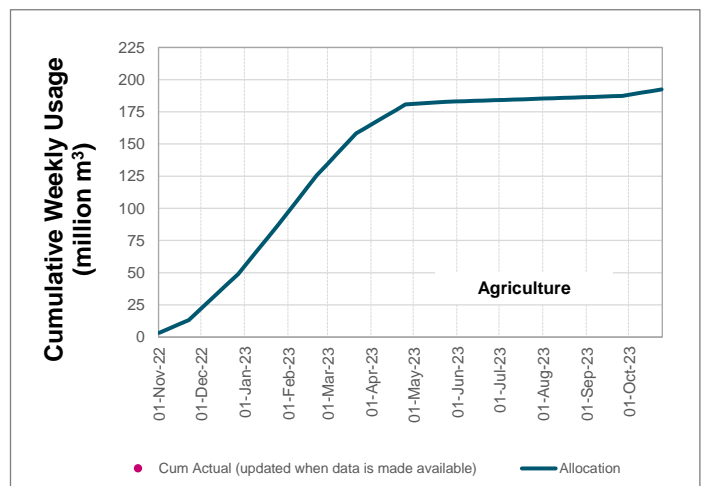
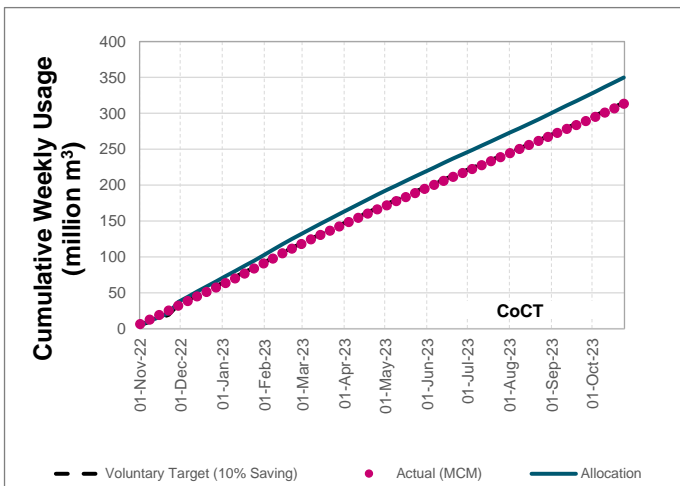
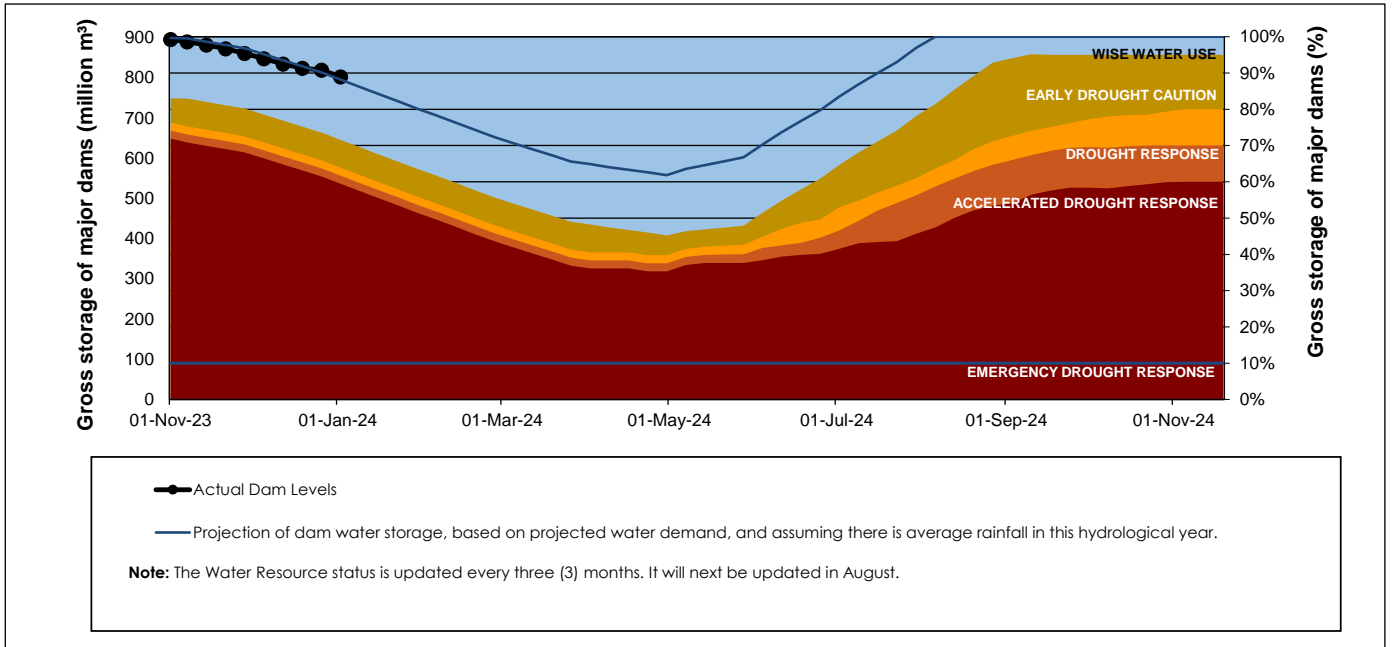
WCWSS Storage Record (2008 - Present)



WCWSS Comparative Storage Graph



Projected WCWSS Dam Storage Levels



Water Stored in Minor Dams

Overall Percentage Full **68.1**

Weekly Change **-4.02**

MINOR DAMS	STORAGE						
	CAPACITY	%	%	%	%	%	%
	MI	08 January 2024	Previous week	2023	2022	2021	2020
ALEXANDRA (Table Mountain)	126	51.8	79.0	53.5	85.5	57.0	46.0
DE VILLIERS (Table Mountain)	243	98.1	98.1	80.6	61.5	61.9	98.8
HELY-HUTCHINSON (Table Mount)	925	47.4	52.3	25.1	43.2	40.9	64.9
KLEINPLAATS (Simon's Town)	1 368	70.8	72.9	44.6	82.2	85.2	70.2
LAND-EN-ZEEZICHT (Helderberg)	451	80.8	82.9	86.4	93.5	91.9	84.0
LEWIS GAY (Simon's Town)	182	62.9	68.2	43.8	78.0	52.1	18.0
VICTORIA (Table Mountain)	128	83.7	85.4	85.4	62.2	91.2	90.8
WOODHEAD (Table Mountain)	954	75.1	80.0	67.9	82.7	77.2	79.2
Total Stored	4 377	2978.6	3154.8	2320.5	3175.3	3088.9	3115.3
Percentages stored		68.1	72.1	53.0	72.5	70.6	71.2

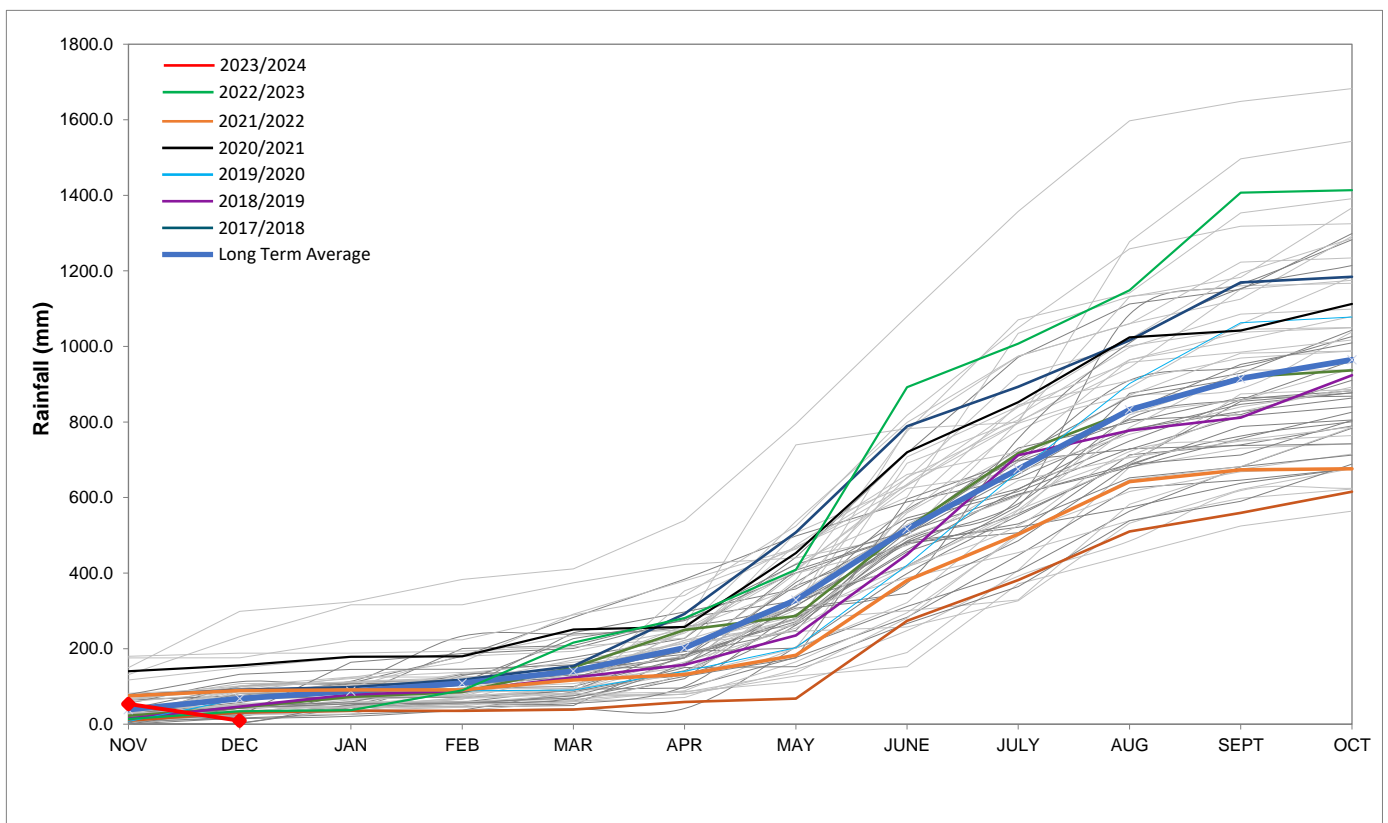
Rainfall Recorded

RAINFALL (mm)	01-Jan	02-Jan	03-Jan	04-Jan	05-Jan	06-Jan	07-Jan	Jan	
								Total*	LT Average
Blackheath Upper	0.0	0.0	0.0	0.0	0.0	0.0	0.0	0.0	15.3
Brooklands	0.0	0.0	0.0	0.0	0.0	0.0	0.0	0.0	27.7
Newlands	0.0	0.0	0.0	0.0	0.0	0.0	0.0	0.0	37.4
Steenbras	0.0	0.0	0.0	0.0	0.0	0.0	0.0	0.0	29.5
Table Mountain (Woodhead)	0.0	0.0	0.0	0.0	0.0	1.5	0.0	1.5	52.7
Theewaterskloof	0.0	0.0	0.0	0.0	0.0	0.0	7.0	7.0	24.9
Tygerberg	0.0	0.0	0.0	0.0	0.0	0.0	0.0	0.0	13.0
Voëlvlei	0.0	0.0	0.0	0.0	0.0	0.0	0.0	0.0	13.2
Wemmershoek	0.0	0.0	0.0	0.0	0.0	0.0	0.0	0.0	20.6
Wynberg	0.0	0.0	0.0	0.0	0.0	0.0	0.0	0.0	21.2

Notes: *Total/cummulative rainfall for month indicated above
LT: Long Term

Accumulated Monthly Rainfall at Wemmershoek

Note: Wemmershoek station used due to long record and mountainous location



Drinking Water Quality

SAMPLE PASS RATE

Month	Water Quality Compliance (%)	Target (%)
Nov-21	99.11	98
Dec-21	99.09	98
Jan-22	99.04	98
Feb-22	99.04	98
Mar-22	98.99	98
Apr-22	98.96	98
May-22	98.90	98
Jun-22	98.96	98
Jul-22	99.46	99
Aug-22	99.47	99
Sep-22	99.46	98.50
Oct-22	99.47	98.50
Nov-22	99.45	98.50
Dec-22	99.36	98.50
Jan-23	99.36	98.50
Feb-23	99.35	98.50
Mar-23	99.29	98.50
Apr-23	99.24	98.50
May-23	99.24	98.50
Jun-23	99.18	98.50
Jul-23	99.19	98.50
Aug-23	99.14	98.50
Sep-23	99.10	98.50
Oct-23	99.10	98.50
Nov-23	99.04	98.50

This table shows CCT drinking water quality compliance according to the South African National Standard 241:2015. Compliance, measured against all prescribed chemical and microbiological components, consistently exceeds the very high CCT target of 98.5%. (Overall compliance percentages of continuous sampling and analysis are released on a monthly basis.)