



Headline Statistics

WCWSS DAM STORAGE (%)

**92.0**

WEEKLY DAM LEVEL CHANGE (%)

**-1.10**

AVERAGE TOTAL DAILY WATER USE (MLD)

**981**

Water Resource Status

WATER RESOURCE STATUS	MEANING OF CURRENT STATUS
Wise Water Use	<p>Although early winter rains have been above average, the City will continue to monitor these levels. It is important to continue using water wisely.</p> <p><b>Note:</b> The Water Resource status is updated every three (3) months. It will next be updated in February.</p>

Water Production from Different Sources

MAJOR DAMS (MLD)

**976**

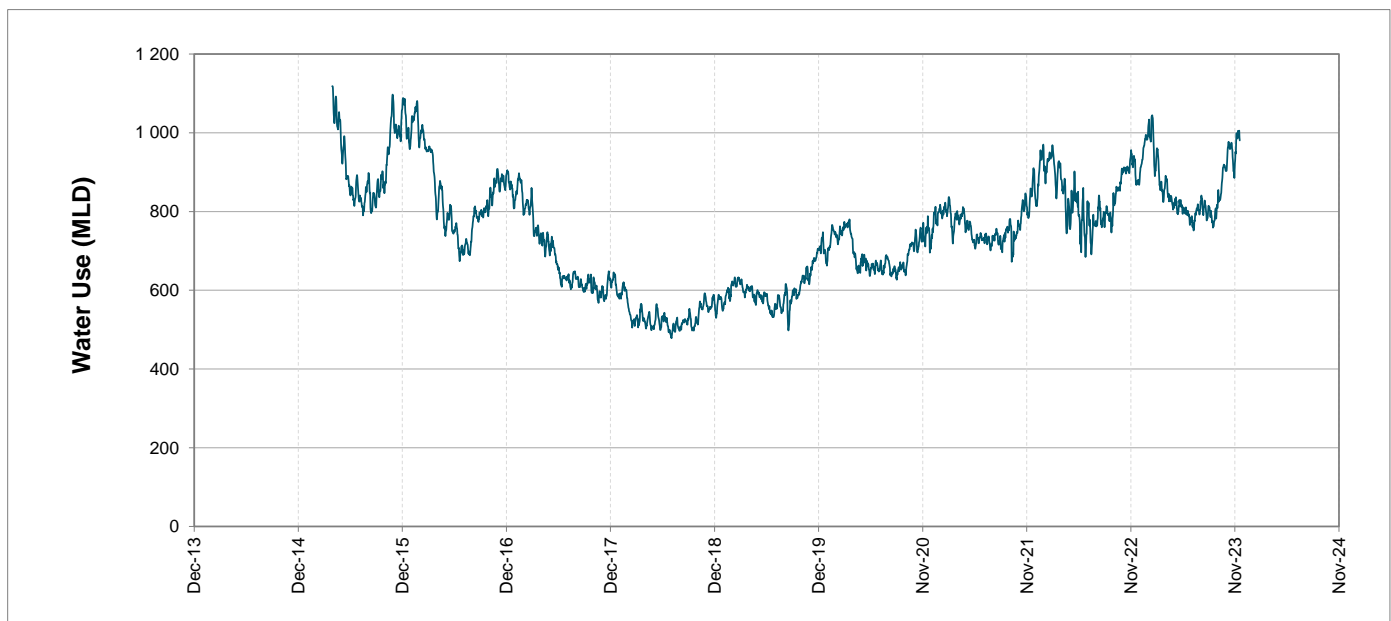
MINOR DAMS (MLD)

**3**

GROUND WATER AND SPRINGS (MLD)

**2**

Overall Water Usage Trend (2010 - Present)



WCWSS means Western Cape Water Supply System

MLD means million litres per day

More information on Water Saving and Restrictions is available on the City of Cape Town's 'ThinkWater' website

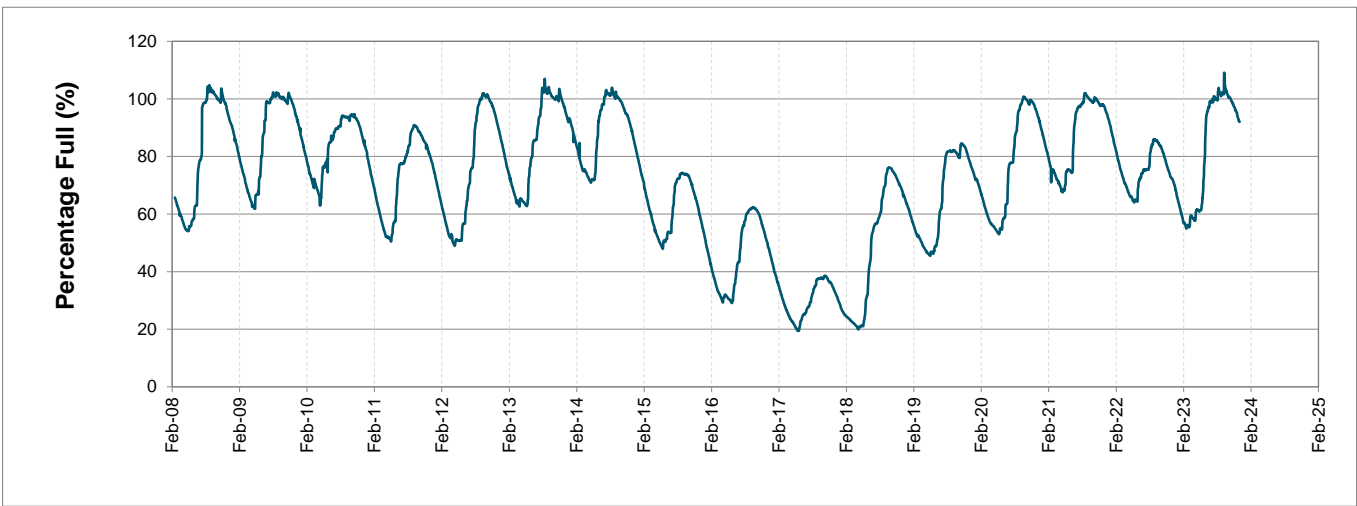
# Water Stored in Major Dams (WCWSS)

Overall Percentage Full **92.0%**

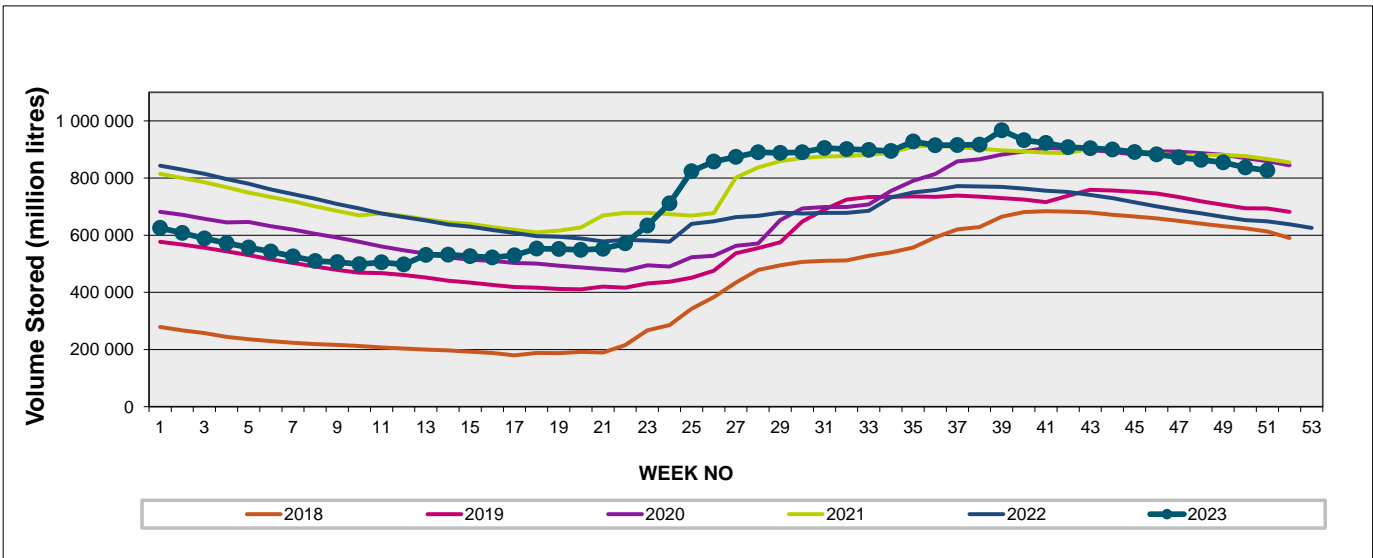
Weekly Change **-1.1%**

MAJOR DAMS (WCWSS)	STORAGE						
	CAPACITY	%	%	%	%	%	%
	MI	18 December 2023	Previous week	2022	2021	2020	2019
BERG RIVER	130 010	95.2	96.9	88.9	99.2	96.3	94.2
STEENBRAS LOWER	33 517	84.6	88.2	74.8	92.5	92.0	87.5
STEENBRAS UPPER	31 767	98.7	98.8	96.1	97.0	81.3	100.6
THEEWATERSKLOOF	480 188	90.6	91.3	69.2	98.7	96.5	69.3
VOËLVLEI	164 095	90.9	93.0	58.6	94.4	90.9	82.8
WEMMERSHOEK	58 644	99.8	99.9	85.0	89.5	95.5	84.1
<b>TOTAL STORED</b>	<b>898 221</b>	<b>826 455</b>	<b>836 656</b>	<b>649 475</b>	<b>872 191</b>	<b>850 640</b>	<b>701 592</b>
<b>% STORAGE</b>		<b>92.0%</b>	<b>93.1%</b>	<b>72.3%</b>	<b>97.1%</b>	<b>94.7%</b>	<b>78.1%</b>

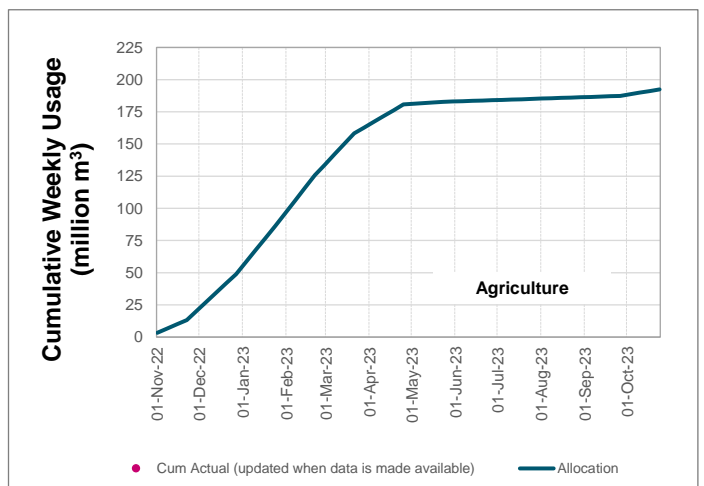
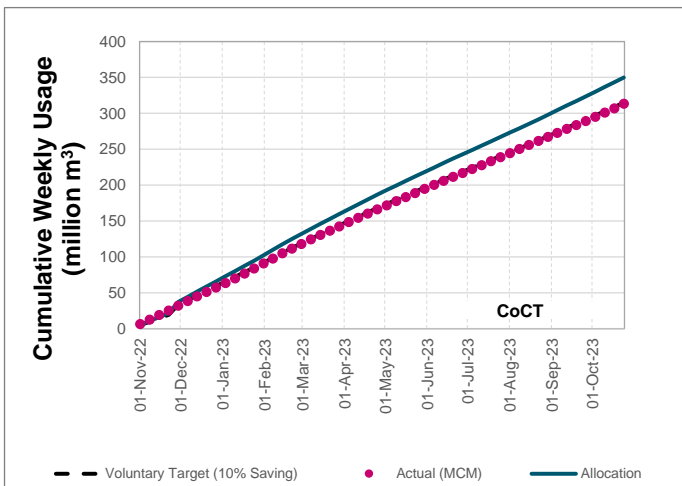
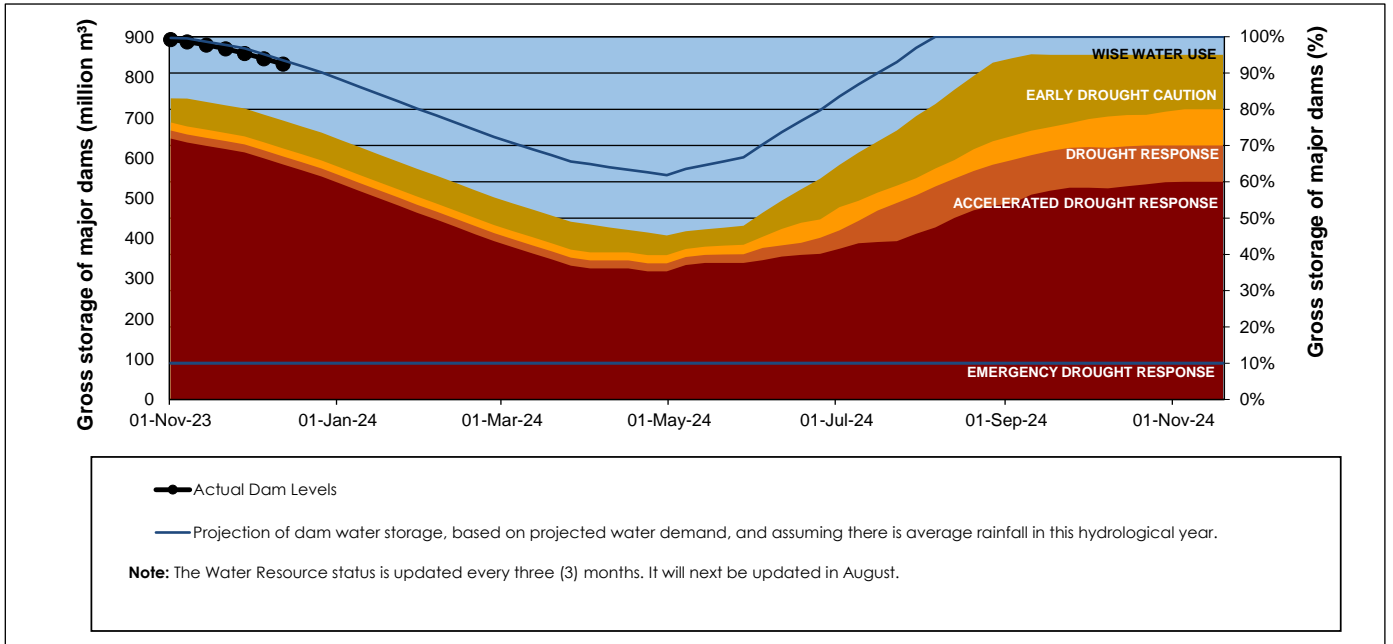
## WCWSS Storage Record (2008 - Present)



## WCWSS Comparative Storage Graph



# Projected WCWSS Dam Storage Levels



## Water Stored in Minor Dams

Overall Percentage Full **75.5**

Weekly Change **-0.92**

MINOR DAMS	STORAGE						
	CAPACITY	%	%	%	%	%	%
	MI	18 December 2023	Previous week	2022	2021	2020	2019
ALEXANDRA (Table Mountain)	126	59.4	60.4	57.3	79.7	65.6	52.2
DE VILLIERS (Table Mountain)	243	97.9	98.8	80.1	55.8	79.3	98.8
HELY-HUTCHINSON (Table Mount)	925	66.6	69.8	37.9	86.3	62.3	96.8
KLEINPLAATS (Simon's Town)	1 368	77.0	78.6	49.4	93.6	93.6	76.4
LAND-EN-ZEEZICHT (Helderberg)	451	90.8	90.8	81.2	98.2	96.3	91.0
LEWIS GAY (Simon's Town)	182	70.8	75.5	67.7	67.7	74.2	28.3
VICTORIA (Table Mountain)	128	90.8	91.2	89.7	76.6	94.3	93.1
WOODHEAD (Table Mountain)	954	73.8	71.4	56.8	60.1	60.5	73.8
<b>Total Stored</b>	<b>4 377</b>	<b>3303.7</b>	<b>3343.9</b>	<b>2419.6</b>	<b>3507.9</b>	<b>3352.6</b>	<b>3500.6</b>
<b>Percentages stored</b>		<b>75.5</b>	<b>76.4</b>	<b>55.3</b>	<b>80.1</b>	<b>76.6</b>	<b>80.0</b>

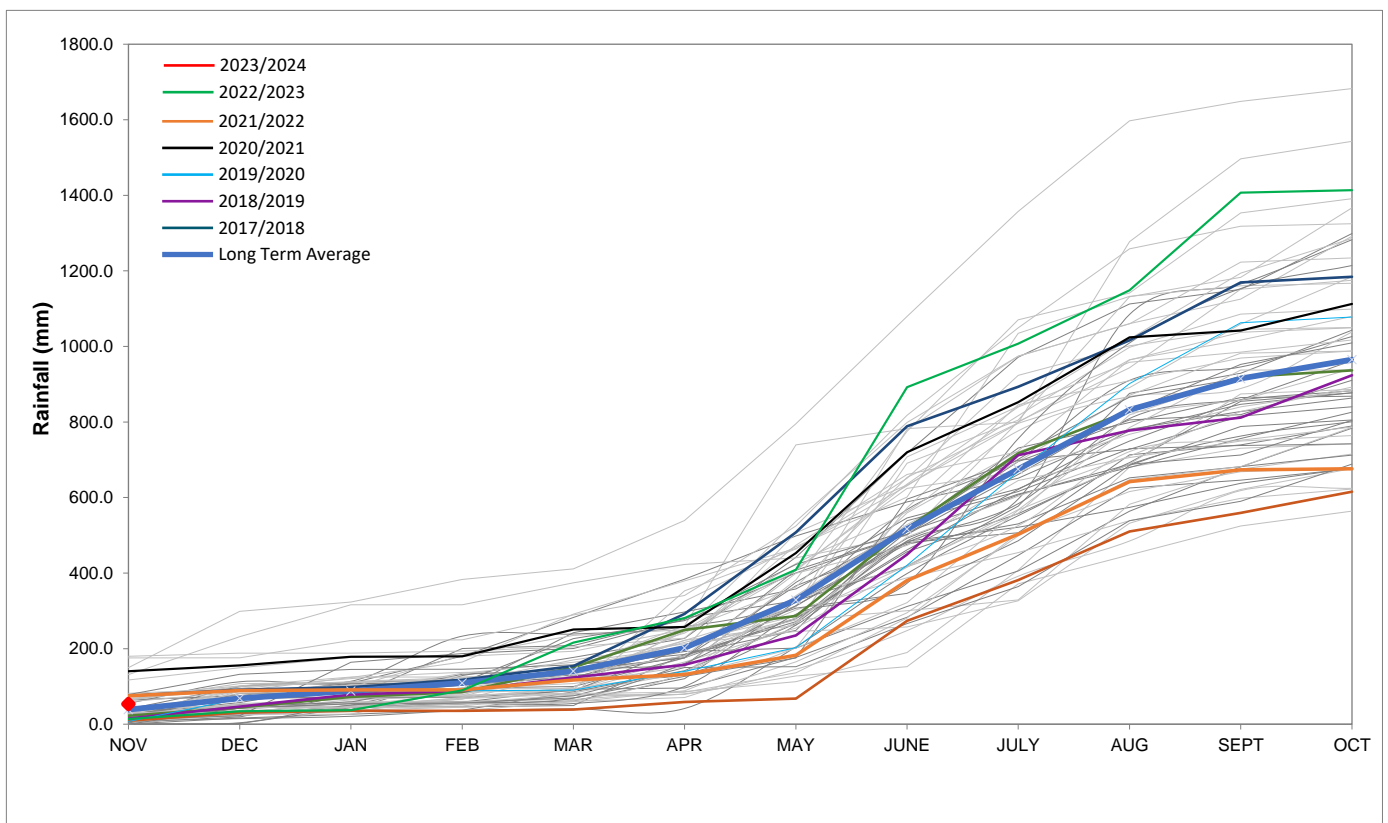
## Rainfall Recorded

RAINFALL (mm)	11-Dec	12-Dec	13-Dec	14-Dec	15-Dec	16-Dec	17-Dec	Dec	
								Total*	LT Average
Blackheath Upper	0.5	0.0	0.0	0.0	0.0	0.0	0.0	0.5	13.0
Brooklands	5.0	0.0	0.0	0.0	0.0	0.0	0.0	17.0	26.9
Newlands	3.0	0.0	0.0	0.0	0.0	0.0	0.0	7.5	47.9
Steenbras	1.0	0.0	0.0	0.0	0.0	0.0	0.0	1.0	36.4
Table Mountain (Woodhead)	0.0	0.0	0.0	0.0	0.0	0.0	0.0	19.0	63.0
Theewaterskloof	1.8	0.0	0.0	0.0	0.0	0.0	0.0	27.8	20.3
Tygerberg	0.0	0.0	0.0	0.0	0.0	0.0	0.0	0.0	10.2
Voëlvlei	0.0	0.0	0.0	0.0	0.0	0.0	0.0	0.0	13.0
Wemmershoek	0.0	0.0	0.0	0.0	0.0	0.0	0.0	9.2	26.7
Wynberg	1.5	0.0	0.0	0.0	0.0	0.0	0.0	1.5	22.0

Notes: \*Total/cummulative rainfall for month indicated above  
LT: Long Term

## Accumulated Monthly Rainfall at Wemmershoek

Note: Wemmershoek station used due to long record and mountainous location



## Drinking Water Quality

### SAMPLE PASS RATE

Month	Water Quality Compliance (%)	Target (%)
Nov-21	99.11	98
Dec-21	99.09	98
Jan-22	99.04	98
Feb-22	99.04	98
Mar-22	98.99	98
Apr-22	98.96	98
May-22	98.90	98
Jun-22	98.96	98
Jul-22	99.46	99
Aug-22	99.47	99
Sep-22	99.46	98.50
Oct-22	99.47	98.50
Nov-22	99.45	98.50
Dec-22	99.36	98.50
Jan-23	99.36	98.50
Feb-23	99.35	98.50
Mar-23	99.29	98.50
Apr-23	99.24	98.50
May-23	99.24	98.50
Jun-23	99.18	98.50
Jul-23	99.19	98.50
Aug-23	99.14	98.50
Sep-23	99.10	98.50
Oct-23	99.10	98.50

This table shows CCT drinking water quality compliance according to the South African National Standard 241:2015. Compliance, measured against all prescribed chemical and microbiological components, consistently exceeds the very high CCT target of 98.5%. (Overall compliance percentages of continuous sampling and analysis are released on a monthly basis.