



Headline Statistics

<p>WCWSS DAM STORAGE (%)</p> <p>95.2</p>	<p>WEEKLY DAM LEVEL CHANGE (%)</p> <p>-0.90</p>	<p>AVERAGE TOTAL DAILY WATER USE (MLD)</p> <p>946</p>
---	--	--

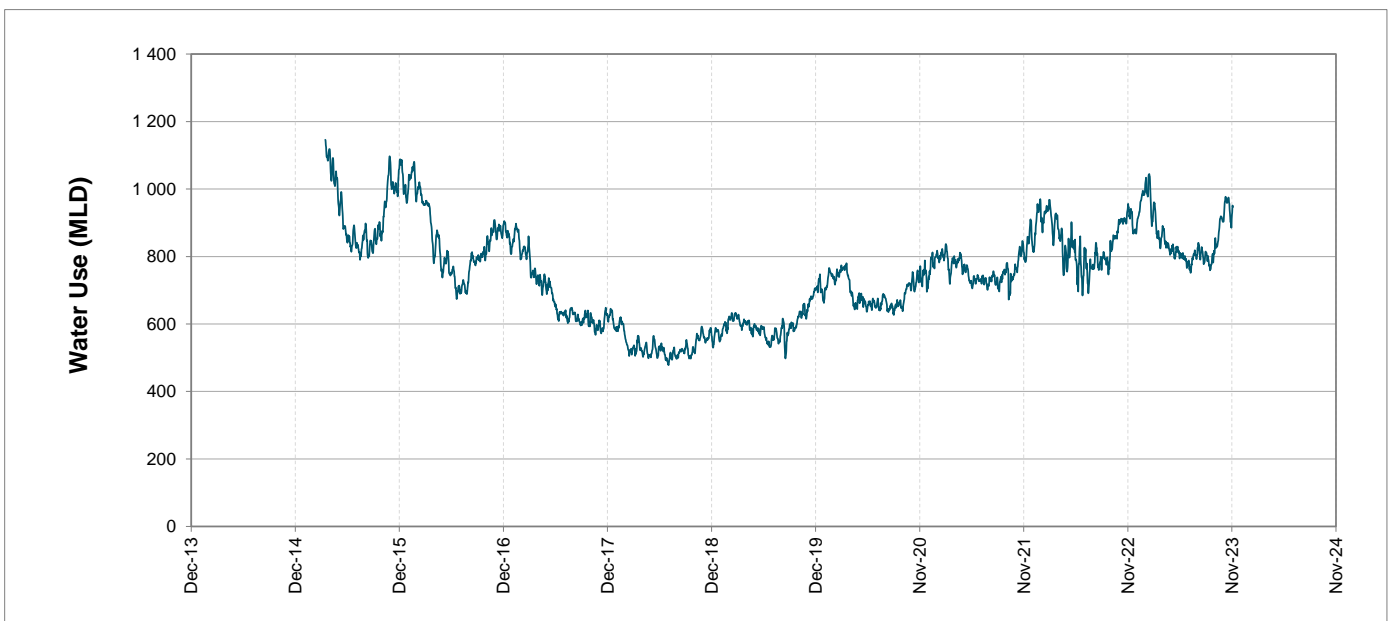
Water Resource Status

WATER RESOURCE STATUS	MEANING OF CURRENT STATUS
Wise Water Use	<p>Although early winter rains have been above average, the City will continue to monitor these levels. It is important to continue using water wisely.</p> <p>Note: The Water Resource status is updated every three (3) months. It will next be updated in February.</p>

Water Production from Different Sources

<p>MAJOR DAMS (MLD)</p> <p>942</p>	<p>MINOR DAMS (MLD)</p> <p>3</p>	<p>GROUND WATER AND SPRINGS (MLD)</p> <p>1</p>
---	---	---

Overall Water Usage Trend (2010 - Present)



WCWSS means Western Cape Water Supply System

MLD means million litres per day

More information on Water Saving and Restrictions is available on the City of Cape Town's 'ThinkWater' website

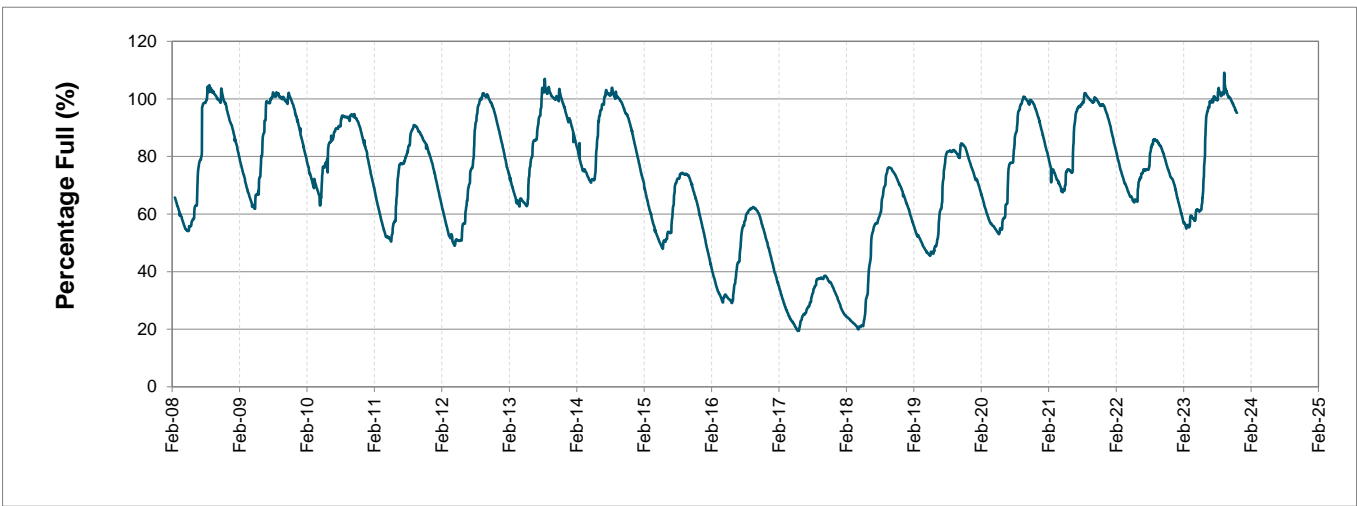
Water Stored in Major Dams (WCWSS)

Overall Percentage Full **95.2%**

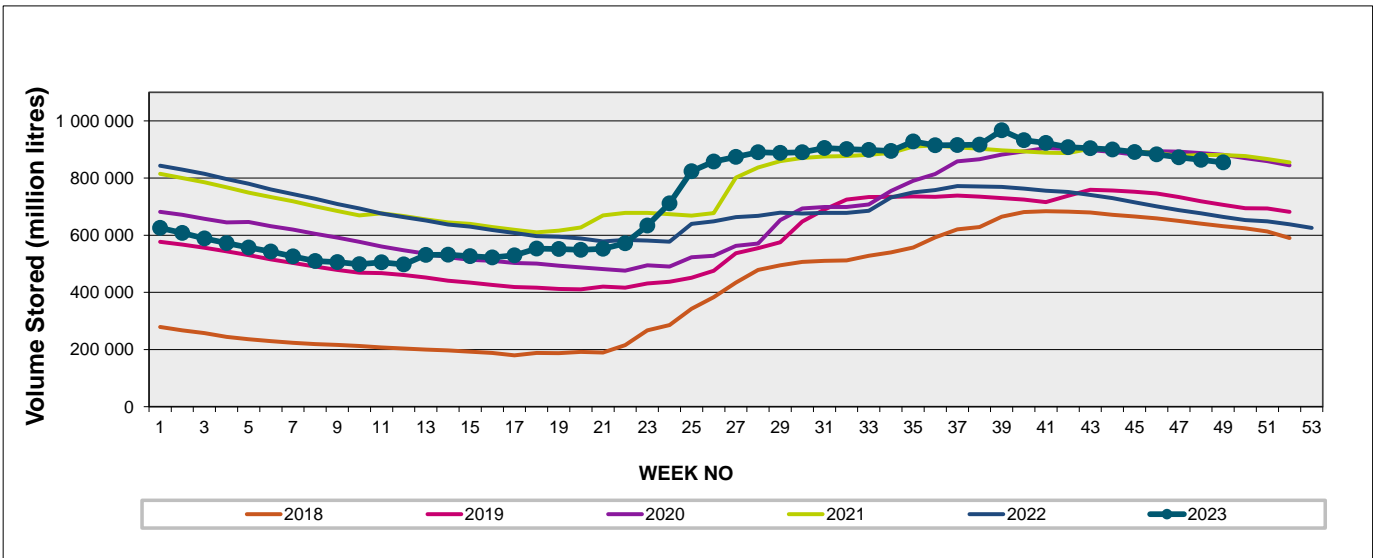
Weekly Change **-0.9%**

MAJOR DAMS (WCWSS)	STORAGE						
	CAPACITY	%	%	%	%	%	%
	MI	04 December 2023	Previous week	2022	2021	2020	2019
BERG RIVER	130 010	98.3	99.3	90.7	100.1	99.9	97.1
STEENBRAS LOWER	33 517	90.0	90.9	77.9	90.3	94.8	91.2
STEENBRAS UPPER	31 767	99.3	99.8	95.3	99.9	85.0	93.6
THEEWATERSKLOOF	480 188	94.2	95.1	71.6	99.1	98.6	72.5
VOËLVLEI	164 095	94.2	95.6	59.3	95.2	94.3	86.6
WEMMERSHOEK	58 644	99.9	100.1	85.4	91.3	98.1	88.0
TOTAL STORED	898 221	854 793	863 388	665 556	877 571	874 514	728 449
% STORAGE		95.2%	96.1%	74.1%	97.7%	97.4%	81.1%

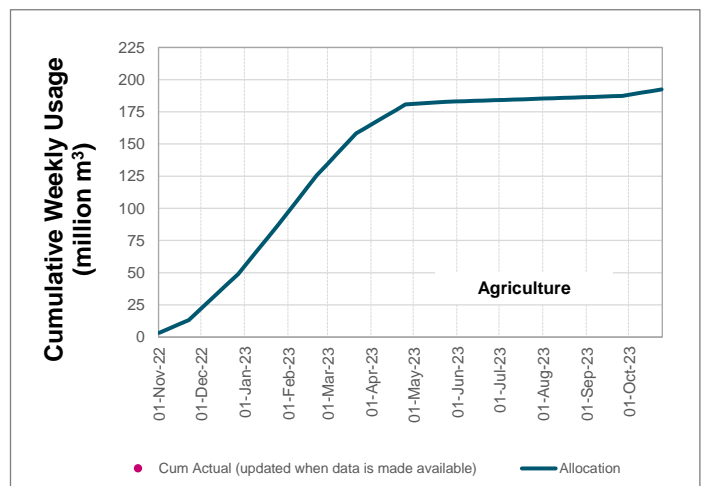
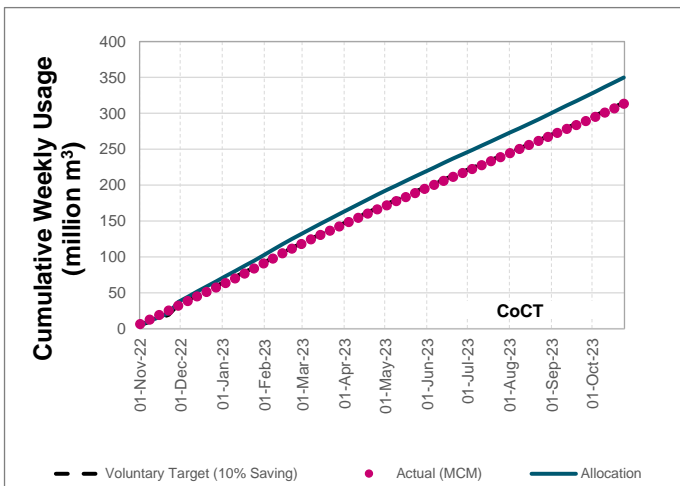
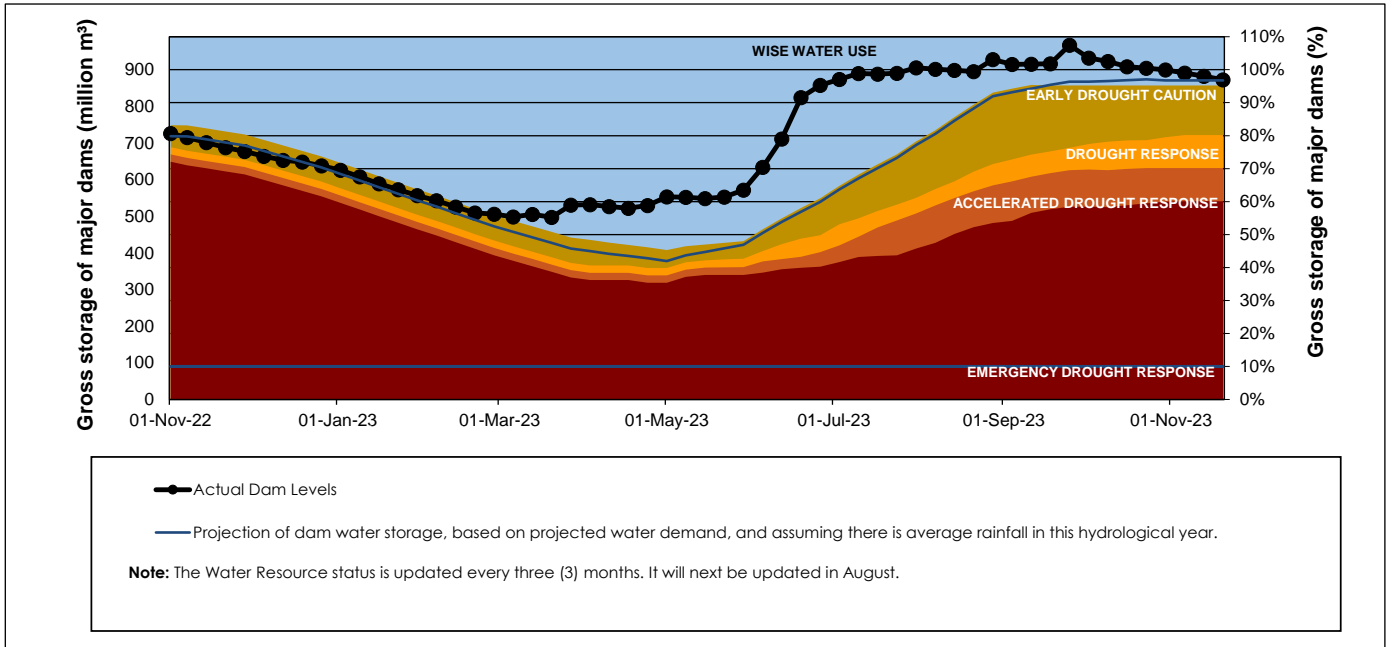
WCWSS Storage Record (2008 - Present)



WCWSS Comparative Storage Graph



Projected WCWSS Dam Storage Levels



Water Stored in Minor Dams

Overall Percentage Full **78.0**

Weekly Change **-1.66**

MINOR DAMS	STORAGE						
	CAPACITY	%	%	%	%	%	%
	MI	04 December 2023	Previous week	2022	2021	2020	2019
ALEXANDRA (Table Mountain)	126	66.1	65.6	61.5	54.9	70.9	57.3
DE VILLIERS (Table Mountain)	243	97.4	97.3	85.3	50.3	89.9	100.2
HELY-HUTCHINSON (Table Mount)	925	81.4	85.5	37.1	76.8	73.3	98.6
KLEINPLAATS (Simon's Town)	1 368	81.2	85.2	53.5	94.7	98.0	79.2
LAND-EN-ZEEZICHT (Helderberg)	451	94.7	97.7	78.6	99.4	95.8	89.0
LEWIS GAY (Simon's Town)	182	83.0	90.0	66.4	76.4	88.2	41.1
VICTORIA (Table Mountain)	128	93.9	92.0	89.7	98.9	98.1	96.6
WOODHEAD (Table Mountain)	954	60.1	55.8	61.4	66.5	66.8	83.5
Total Stored	4 377	3414.2	3486.7	2513.0	3497.3	3630.1	3673.2
Percentages stored		78.0	79.7	57.4	79.9	82.9	83.9

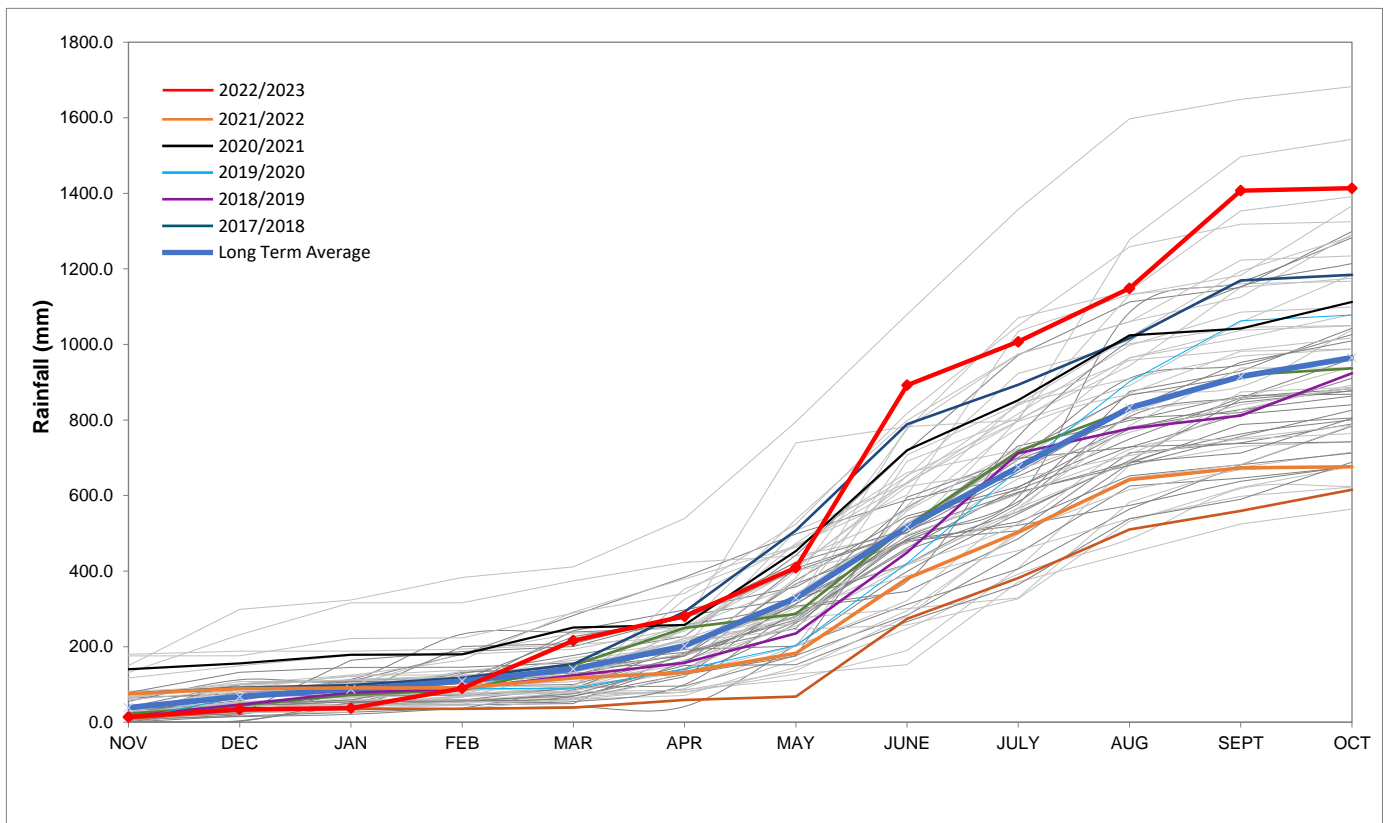
Rainfall Recorded

RAINFALL (mm)	27-Nov	28-Nov	29-Nov	30-Nov	01-Dec	02-Dec	03-Dec	Dec	
								Total*	LT Average
Blackheath Upper	0.0	0.0	0.0	0.0	0.0	0.0	0.0	0.0	13.0
Brooklands	0.0	0.0	0.0	0.0	0.0	0.0	0.0	0.0	26.9
Newlands	0.0	0.0	0.0	0.0	0.0	0.0	0.0	0.0	47.9
Steenbras	0.8	0.0	0.0	0.0	0.0	0.0	0.0	0.0	36.4
Table Mountain (Woodhead)	0.0	0.0	0.0	0.0	5.5	0.0	0.0	5.5	63.0
Theewaterskloof	0.0	0.0	0.0	0.0	0.0	0.0	0.0	0.0	20.3
Tygerberg	0.0	0.0	0.0	0.0	0.0	0.0	0.0	0.0	10.2
Voëlvlei	0.0	0.0	0.0	0.0	0.0	0.0	0.0	0.0	13.0
Wemmershoek	0.0	0.0	0.0	0.0	0.0	0.0	0.0	0.0	26.7
Wynberg	0.0	0.0	0.0	0.0	0.0	0.0	0.0	0.0	22.0

Notes: *Total/cummulative rainfall for month indicated above
LT: Long Term

Accumulated Monthly Rainfall at Wemmershoek

Note: Wemmershoek station used due to long record and mountainous location



Drinking Water Quality

SAMPLE PASS RATE

Month	Water Quality Compliance (%)	Target (%)
Nov-21	99.11	98
Dec-21	99.09	98
Jan-22	99.04	98
Feb-22	99.04	98
Mar-22	98.99	98
Apr-22	98.96	98
May-22	98.90	98
Jun-22	98.96	98
Jul-22	99.46	99
Aug-22	99.47	99
Sep-22	99.46	98.50
Oct-22	99.47	98.50
Nov-22	99.45	98.50
Dec-22	99.36	98.50
Jan-23	99.36	98.50
Feb-23	99.35	98.50
Mar-23	99.29	98.50
Apr-23	99.24	98.50
May-23	99.24	98.50
Jun-23	99.18	98.50
Jul-23	99.19	98.50
Aug-23	99.14	98.50
Sep-23	99.10	98.50
Oct-23	99.10	98.50

This table shows CCT drinking water quality compliance according to the South African National Standard 241:2015. Compliance, measured against all prescribed chemical and microbiological components, consistently exceeds the very high CCT target of 98.5%. (Overall compliance percentages of continuous sampling and analysis are released on a monthly basis.