



Headline Statistics

<p>WCWSS DAM STORAGE (%)</p> <p>99.2</p>	<p>WEEKLY DAM LEVEL CHANGE (%)</p> <p>-1.00</p>	<p>AVERAGE TOTAL DAILY WATER USE (MLD)</p> <p>963</p>
---	--	--

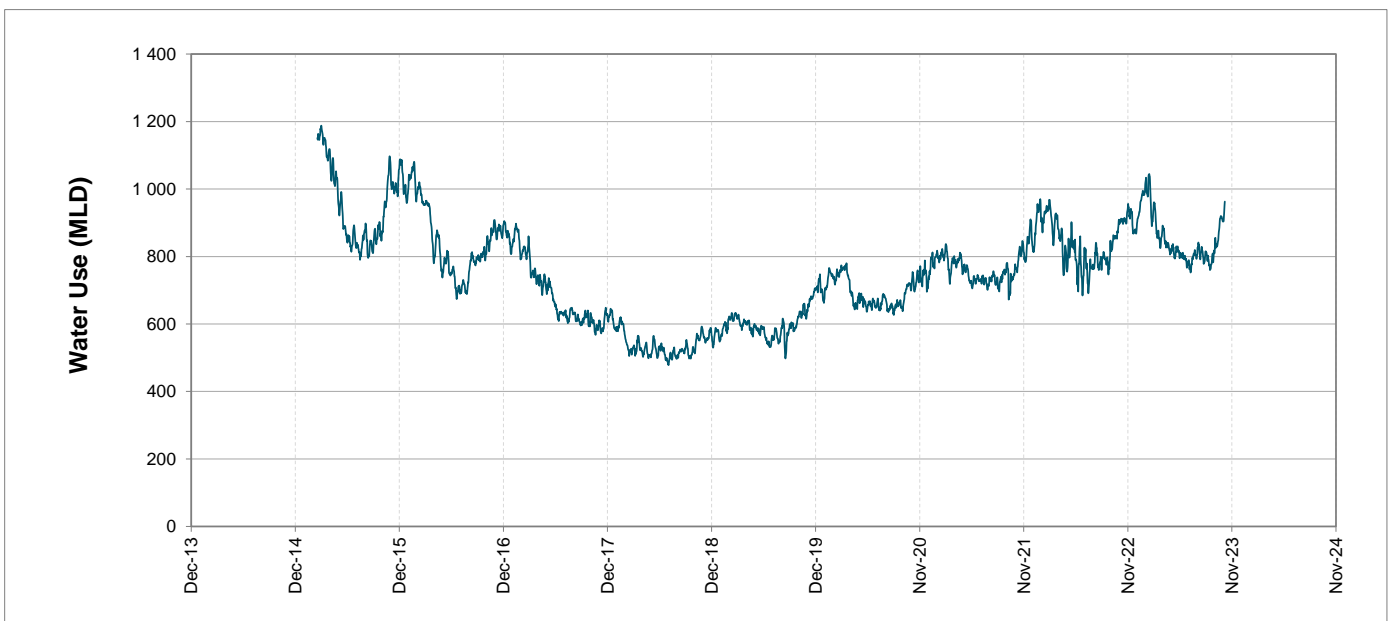
Water Resource Status

WATER RESOURCE STATUS	MEANING OF CURRENT STATUS
Wise Water Use	<p>Although early winter rains have been above average, the City will continue to monitor these levels. It is important to continue using water wisely.</p> <p>Note: The Water Resource status is updated every three (3) months. It will next be updated in November.</p>

Water Production from Different Sources

<p>MAJOR DAMS (MLD)</p> <p>946</p>	<p>MINOR DAMS (MLD)</p> <p>17</p>	<p>GROUND WATER AND SPRINGS (MLD)</p> <p>0</p>
---	--	---

Overall Water Usage Trend (2010 - Present)



WCWSS means Western Cape Water Supply System

MLD means million litres per day

More information on Water Saving and Restrictions is available on the City of Cape Town's 'ThinkWater' website

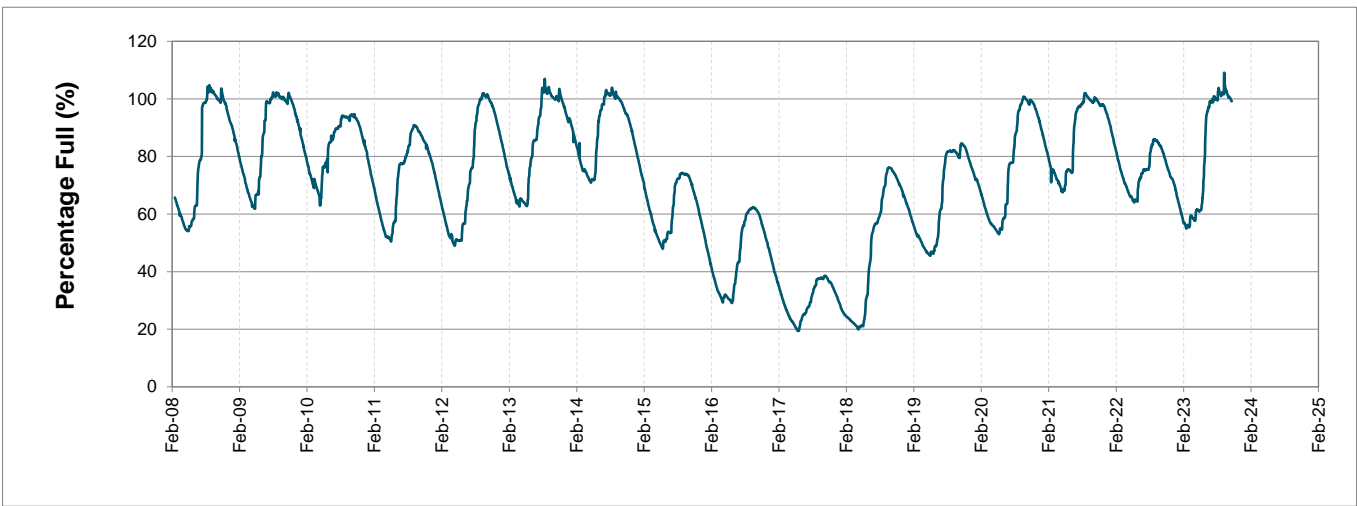
Water Stored in Major Dams (WCWSS)

Overall Percentage Full **99.2%**

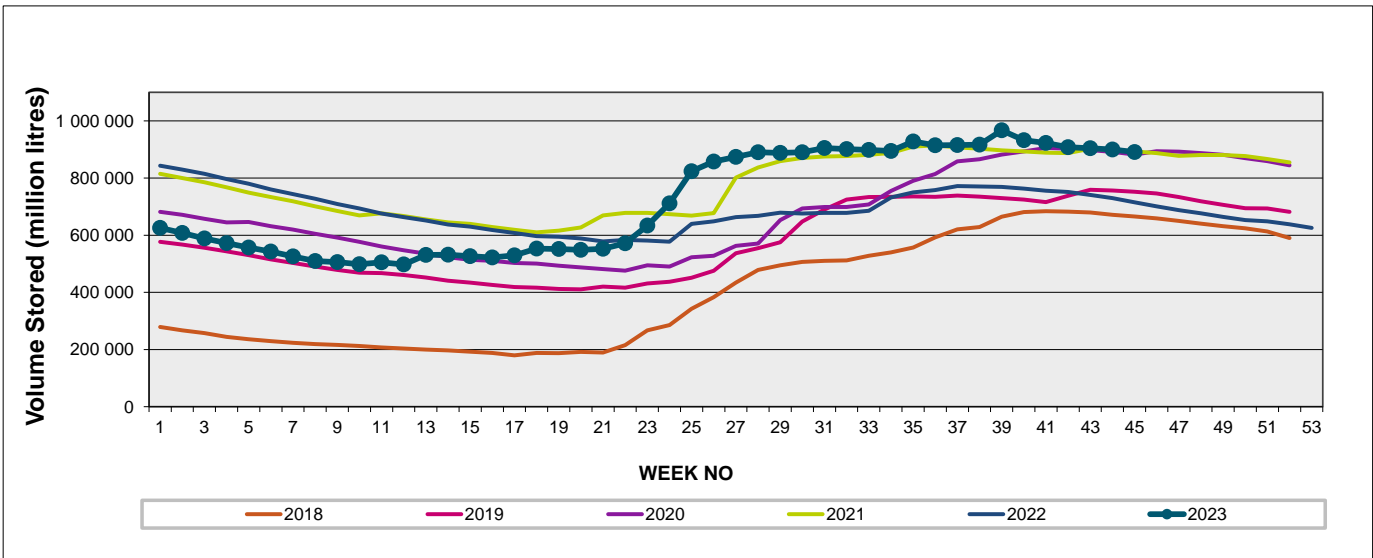
Weekly Change **-1.0%**

MAJOR DAMS (WCWSS)	STORAGE						
	CAPACITY	%	%	%	%	%	%
	MI	06 November 2023	Previous week	2022	2021	2020	2019
BERG RIVER	130 010	99.7	99.8	95.8	100.4	99.5	100.2
STEENBRAS LOWER	33 517	95.3	99.3	84.1	94.2	92.9	99.7
STEENBRAS UPPER	31 767	100.3	100.2	93.6	97.5	90.9	92.5
THEEWATERSKLOOF	480 188	99.8	101.0	77.9	101.1	99.8	75.4
VOËLVLEI	164 095	97.4	98.4	66.3	98.0	95.2	89.9
WEMMERSHOEK	58 644	100.1	99.9	87.0	95.6	95.1	95.0
TOTAL STORED	898 221	891 064	899 688	716 244	895 215	880 561	758 543
% STORAGE		99.2%	100.2%	79.7%	99.7%	98.0%	84.4%

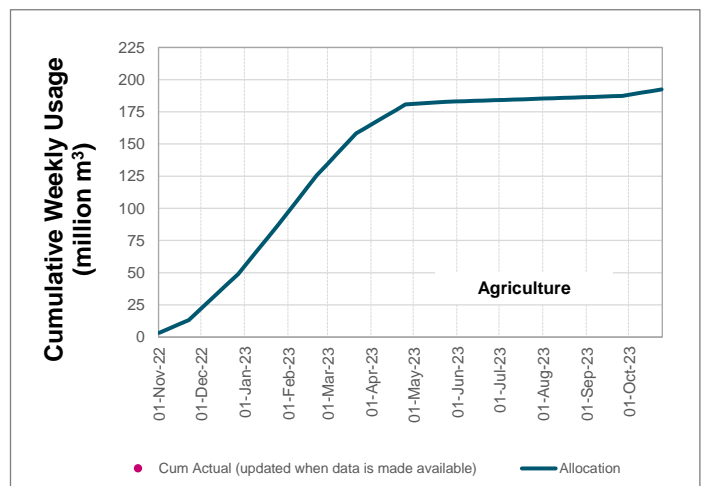
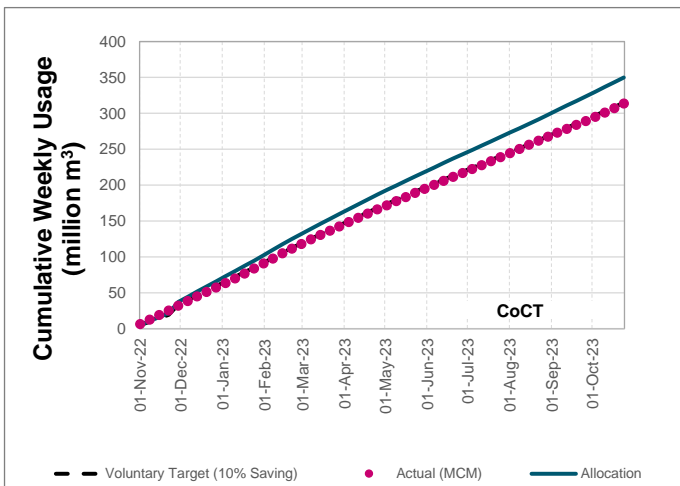
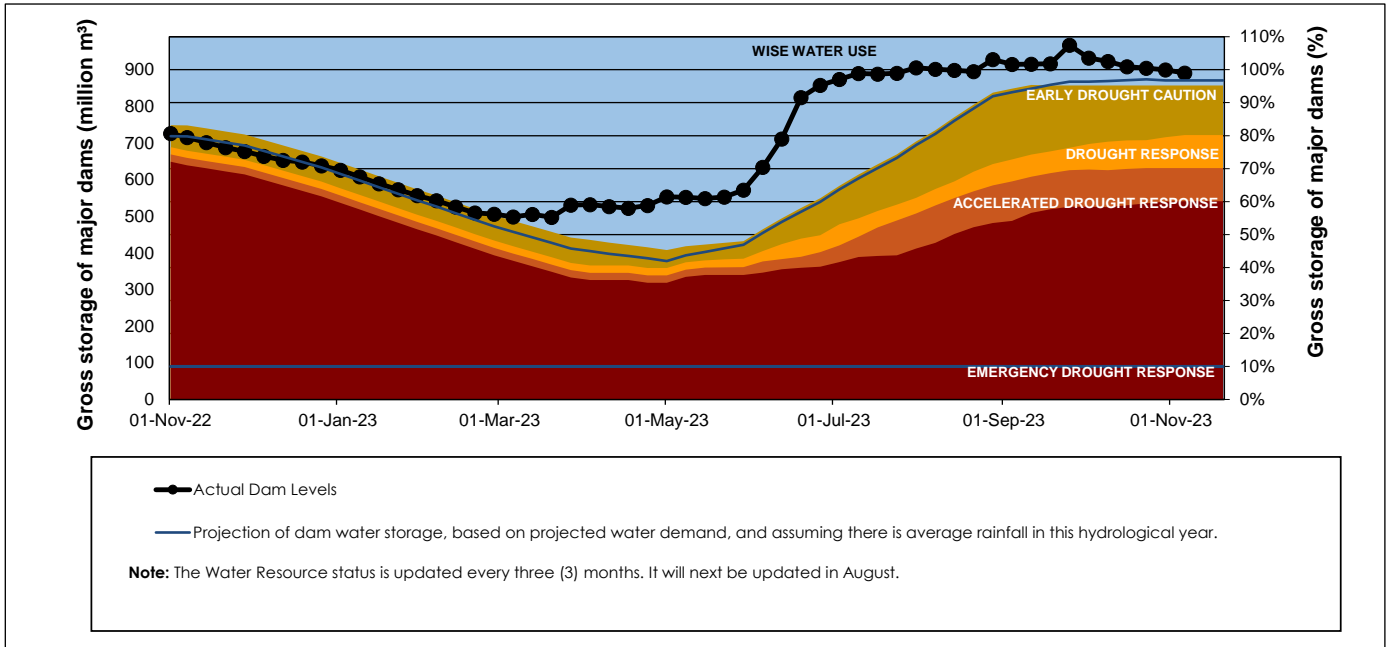
WCWSS Storage Record (2008 - Present)



WCWSS Comparative Storage Graph



Projected WCWSS Dam Storage Levels



Water Stored in Minor Dams

Overall Percentage Full **83.8**

Weekly Change **-2.78**

MINOR DAMS	STORAGE						
	CAPACITY	%	%	%	%	%	%
	MI	06 November 2023	Previous week	2022	2021	2020	2019
ALEXANDRA (Table Mountain)	126	75.8	78.0	69.8	61.4	75.1	70.5
DE VILLIERS (Table Mountain)	243	92.4	92.8	83.8	68.9	99.0	99.7
HELY-HUTCHINSON (Table Mount)	925	98.1	98.6	61.1	100.0	83.6	99.0
KLEINPLAATS (Simon's Town)	1 368	90.4	94.7	64.3	96.9	93.6	86.2
LAND-EN-ZEEZICHT (Helderberg)	451	99.4	99.4	79.5	100.0	95.4	83.9
LEWIS GAY (Simon's Town)	182	97.2	99.0	53.8	93.0	91.7	67.0
VICTORIA (Table Mountain)	128	96.6	97.3	94.3	100.4	96.6	97.7
WOODHEAD (Table Mountain)	954	52.6	58.2	61.8	59.0	70.9	89.6
Total Stored	4 377	3668.9	3790.4	2876.4	3755.5	3737.5	3863.6
Percentages stored		83.8	86.6	65.7	85.8	85.4	88.3

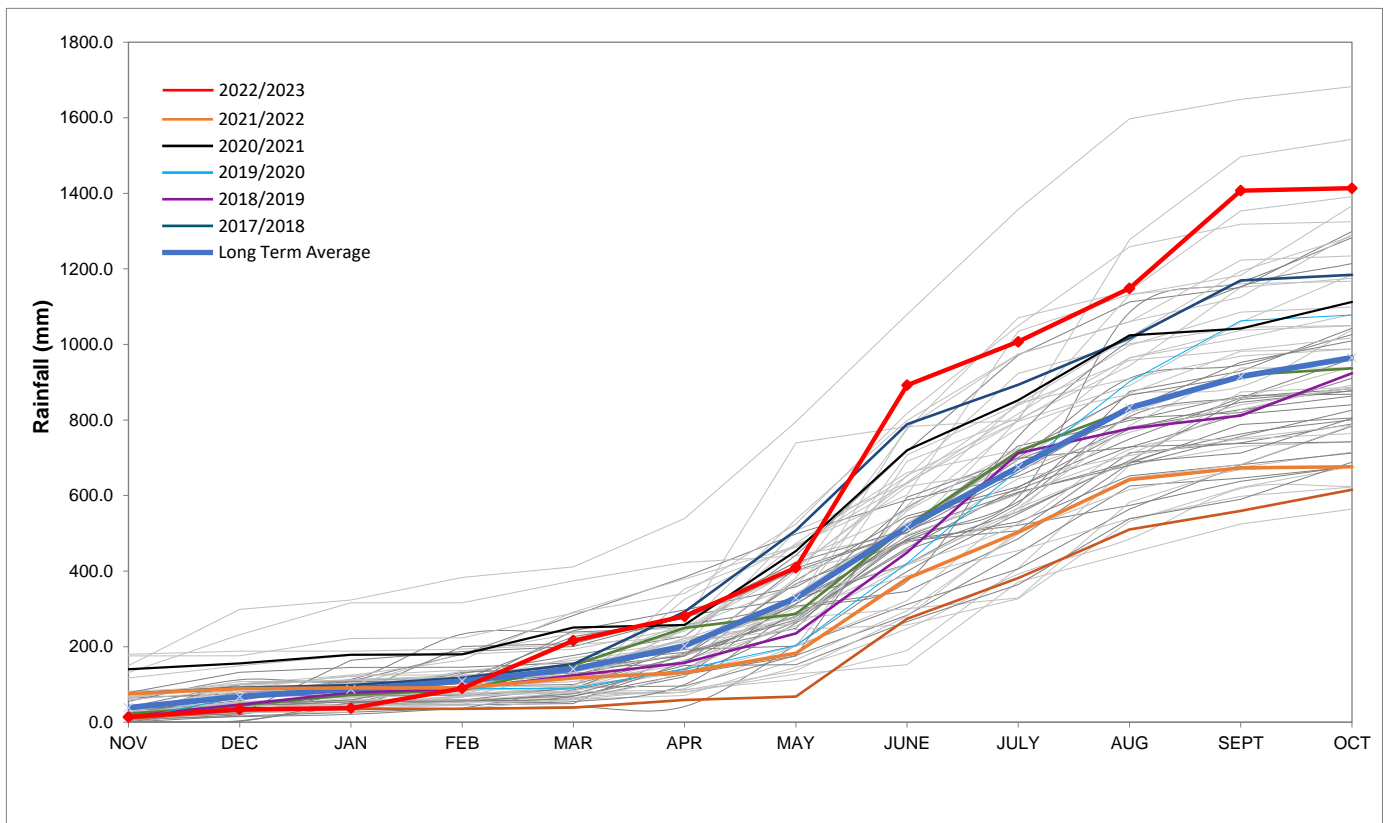
Rainfall Recorded

RAINFALL (mm)	30-Oct	31-Oct	01-Nov	02-Nov	03-Nov	04-Nov	05-Nov	Nov	
								Total*	LT Average
Blackheath Upper	0.0	0.0	0.0	0.0	0.0	0.0	0.0	0.0	27.1
Brooklands	0.0	0.0	0.0	3.0	0.0	0.0	0.0	3.0	50.8
Newlands	0.0	0.0	0.0	0.0	0.0	0.0	0.0	0.0	60.3
Steenbras	0.0	0.0	0.0	0.0	0.0	0.0	0.0	0.0	49.3
Table Mountain (Woodhead)	0.0	0.0	0.0	0.0	0.0	0.0	0.0	0.0	69.0
Theewaterskloof	0.0	0.0	0.0	0.0	0.0	0.0	0.0	0.0	36.4
Tygerberg	0.0	0.0	0.0	0.0	0.0	0.0	0.0	0.0	24.5
Voëlvlei	0.0	0.0	0.0	0.0	0.0	0.0	0.0	0.0	29.0
Wemmershoek	0.0	0.0	0.0	0.0	0.0	0.0	0.0	0.0	39.8
Wynberg	0.0	0.0	0.0	0.0	0.0	0.0	0.0	0.0	44.9

Notes: *Total/cummulative rainfall for month indicated above
LT: Long Term

Accumulated Monthly Rainfall at Wemmershoek

Note: Wemmershoek station used due to long record and mountainous location



Drinking Water Quality

SAMPLE PASS RATE

Month	Water Quality Compliance (%)	Target (%)
Nov-21	99.11	98
Dec-21	99.09	98
Jan-22	99.04	98
Feb-22	99.04	98
Mar-22	98.99	98
Apr-22	98.96	98
May-22	98.90	98
Jun-22	98.96	98
Jul-22	99.46	99
Aug-22	99.47	99
Sep-22	99.46	98.50
Oct-22	99.47	98.50
Nov-22	99.45	98.50
Dec-22	99.36	98.50
Jan-23	99.36	98.50
Feb-23	99.35	98.50
Mar-23	99.29	98.50
Apr-23	99.24	98.50
May-23	99.24	98.50
Jun-23	99.18	98.50
Jul-23	99.19	98.50
Aug-23	99.14	98.50
Sep-23	99.10	98.50

This table shows CCT drinking water quality compliance according to the South African National Standard 241:2015. Compliance, measured against all prescribed chemical and microbiological components, consistently exceeds the very high CCT target of 98.5%. (Overall compliance percentages of continuous sampling and analysis are released on a monthly basis.