



Headline Statistics

<p>WCWSS DAM STORAGE (%)</p> <p>103.8</p>	<p>WEEKLY DAM LEVEL CHANGE (%)</p> <p>-3.80</p>	<p>AVERAGE TOTAL DAILY WATER USE (MLD)</p> <p>821</p>
--	--	--

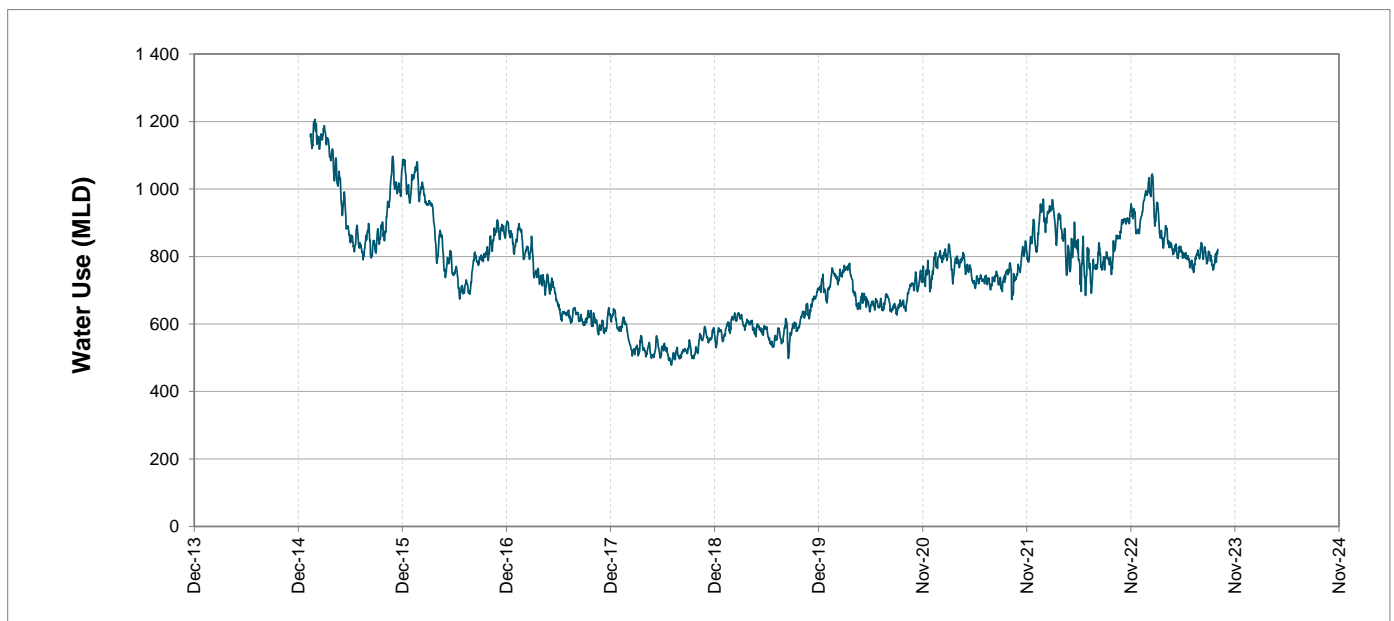
Water Resource Status

WATER RESOURCE STATUS	MEANING OF CURRENT STATUS
Wise Water Use	<p>Although early winter rains have been above average, the City will continue to monitor these levels. It is important to continue using water wisely.</p> <p>Note: The Water Resource status is updated every three (3) months. It will next be updated in November.</p>

Water Production from Different Sources

<p>MAJOR DAMS (MLD)</p> <p>800</p>	<p>MINOR DAMS (MLD)</p> <p>21</p>	<p>GROUND WATER AND SPRINGS (MLD)</p> <p>0</p>
---	--	---

Overall Water Usage Trend (2010 - Present)



WCWSS means Western Cape Water Supply System

MLD means million litres per day

More information on Water Saving and Restrictions is available on the City of Cape Town's 'ThinkWater' website

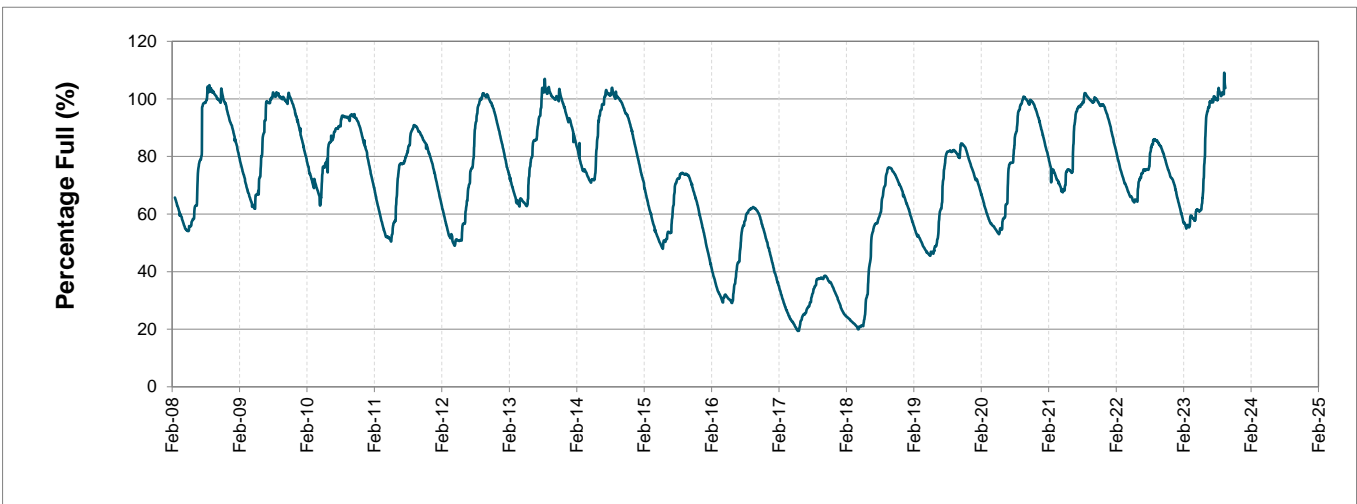
Water Stored in Major Dams (WCWSS)

Overall Percentage Full **103.8%**

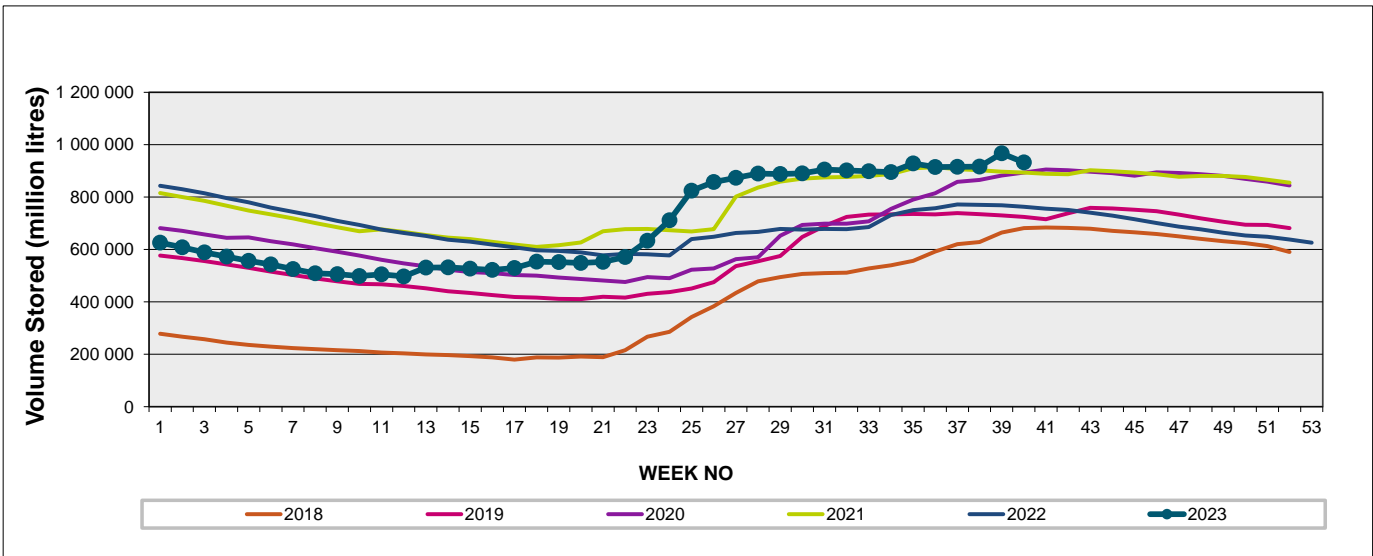
Weekly Change **-3.8%**

MAJOR DAMS (WCWSS)	STORAGE						
	CAPACITY	%	%	%	%	%	%
	MI	02 October 2023	Previous week	2022	2021	2020	2019
BERG RIVER	130 010	100.7	105.3	99.7	99.8	100.9	99.3
STEENBRAS LOWER	33 517	103.5	112.8	91.0	97.8	101.1	97.5
STEENBRAS UPPER	31 767	101.4	104.6	91.9	98.3	98.8	85.5
THEEWATERSKLOOF	480 188	106.0	111.6	84.0	99.9	100.5	71.9
VOËLVLEI	164 095	101.5	99.9	72.2	99.4	98.9	88.7
WEMMERSHOEK	58 644	100.1	101.0	87.8	98.1	98.8	92.1
TOTAL STORED	898 221	932 064	966 866	762 614	894 164	899 395	733 703
% STORAGE		103.8%	107.6%	84.9%	99.5%	100.1%	81.7%

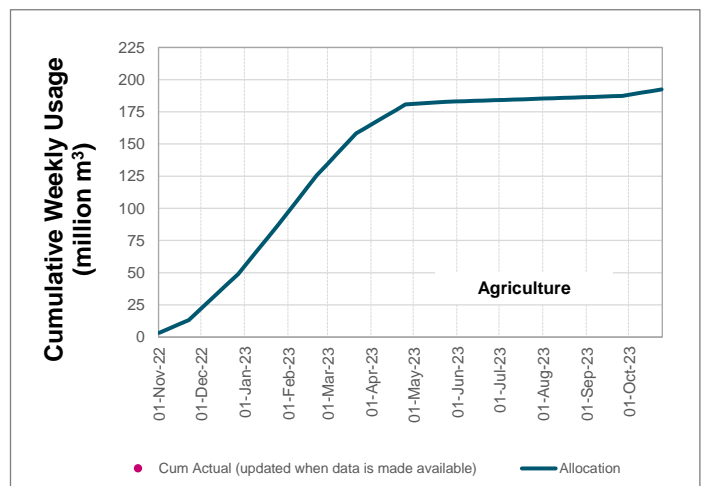
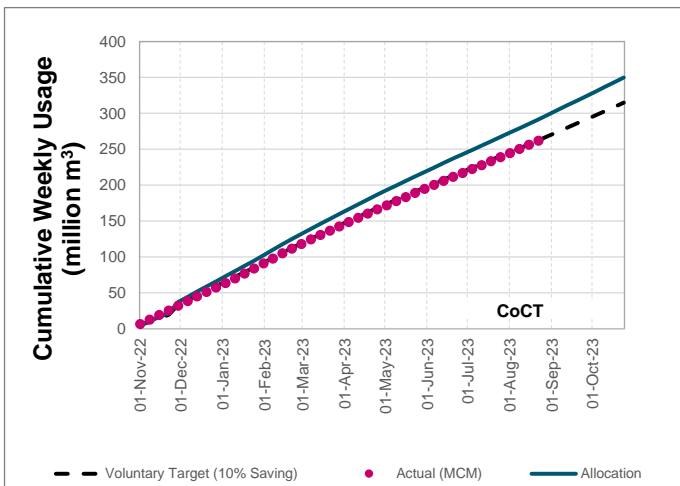
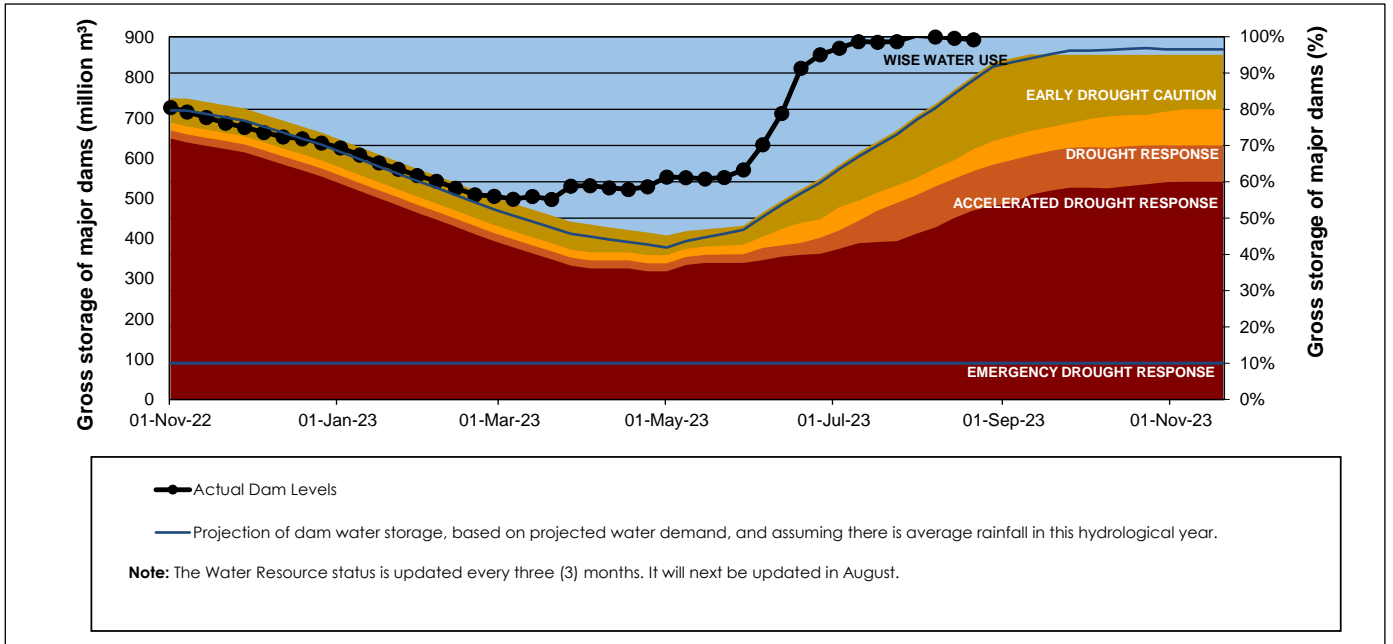
WCWSS Storage Record (2008 - Present)



WCWSS Comparative Storage Graph



Projected WCWSS Dam Storage Levels



Water Stored in Minor Dams

Overall Percentage Full **97.7**

Weekly Change **-3.08**

MINOR DAMS	STORAGE						
	CAPACITY	%	%	%	%	%	%
	MI	02 October 2023	Previous week	2022	2021	2020	2019
ALEXANDRA (Table Mountain)	126	100.0	98.3	86.9	68.0	99.3	53.6
DE VILLIERS (Table Mountain)	243	87.9	102.8	80.8	93.7	100.2	100.2
HELY-HUTCHINSON (Table Mount)	925	99.0	103.7	100.0	99.7	100.0	100.5
KLEINPLAATS (Simon's Town)	1 368	100.2	102.5	75.0	99.3	100.0	83.2
LAND-EN-ZEEZICHT (Helderberg)	451	99.4	99.4	87.4	100.0	94.8	83.4
LEWIS GAY (Simon's Town)	182	100.9	100.9	36.0	100.5	100.9	69.4
VICTORIA (Table Mountain)	128	100.4	105.3	100.0	100.4	100.0	100.4
WOODHEAD (Table Mountain)	954	98.6	100.9	66.1	77.6	97.5	98.1
Total Stored	4 377	4276.9	4411.7	3445.9	4044.1	4279.2	3902.6
Percentages stored		97.7	100.8	78.7	92.4	97.8	89.2

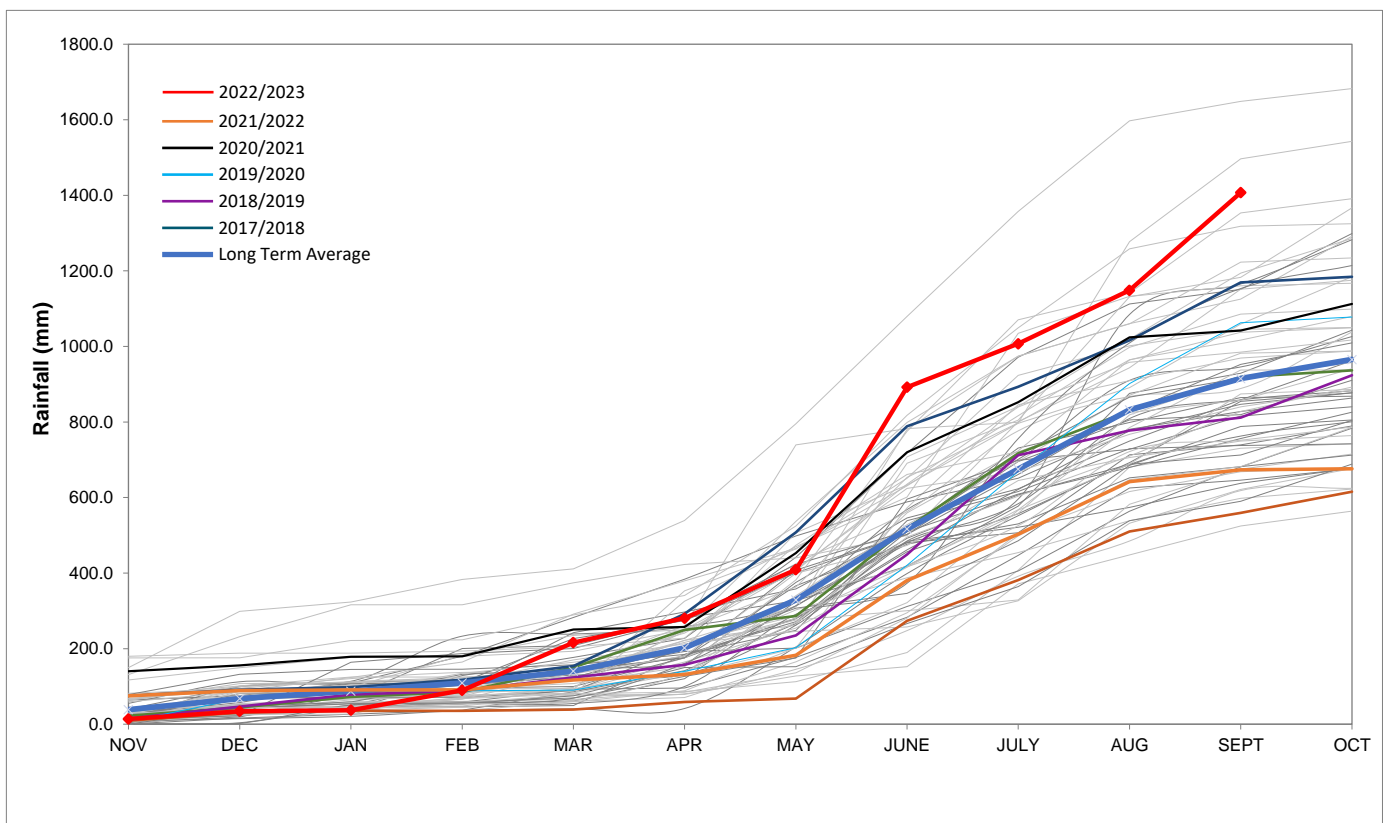
Rainfall Recorded

RAINFALL (mm)	25-Sep	26-Sep	27-Sep	28-Sep	29-Sep	30-Sep	01-Oct	Oct	
								Total*	LT Average
Blackheath Upper	6.0	0.0	0.0	0.0	2.5	0.0	0.0	0.0	26.8
Brooklands	14.0	0.0	0.0	0.0	14.0	0.0	0.0	0.0	47.7
Newlands	12.0	0.0	0.0	0.0	35.0	0.4	0.0	0.4	72.2
Steenbras	23.5	0.0	0.0	0.0	17.0	3.5	0.0	3.5	55.4
Table Mountain (Woodhead)	10.0	0.0	0.0	0.0	25.0	0.0	0.0	0.0	83.7
Theewaterskloof	0.0	0.0	0.0	0.0	8.0	2.0	0.0	2.0	44.1
Tygerberg	16.4	0.0	0.0	0.0	2.1	0.0	0.0	0.0	28.9
Voëlvlei	1.0	0.0	0.0	0.0	0.1	8.0	0.0	8.0	26.7
Wemmershoek	30.5	0.0	0.0	0.0	4.3	4.4	0.0	4.4	43.0
Wynberg	7.7	0.0	0.0	0.0	8.9	0.0	0.0	0.0	51.1

Notes: *Total/cummulative rainfall for month indicated above
LT: Long Term

Accumulated Monthly Rainfall at Wemmershoek

Note: Wemmershoek station used due to long record and mountainous location



Drinking Water Quality

SAMPLE PASS RATE

Month	Water Quality Compliance (%)	Target (%)
Nov-21	99.11	98
Dec-21	99.09	98
Jan-22	99.04	98
Feb-22	99.04	98
Mar-22	98.99	98
Apr-22	98.96	98
May-22	98.90	98
Jun-22	98.96	98
Jul-22	99.46	99
Aug-22	99.47	99
Sep-22	99.46	98.50
Oct-22	99.47	98.50
Nov-22	99.45	98.50
Dec-22	99.36	98.50
Jan-23	99.36	98.50
Feb-23	99.35	98.50
Mar-23	99.29	98.50
Apr-23	99.24	98.50
May-23	99.24	98.50
Jun-23	99.18	98.50
Jul-23	99.19	98.50
Aug-23	99.14	98.50

This table shows CCT drinking water quality compliance according to the South African National Standard 241:2015. Compliance, measured against all prescribed chemical and microbiological components, consistently exceeds the very high CCT target of 98.5%. (Overall compliance percentages of continuous sampling and analysis are released on a monthly basis.