



Headline Statistics

<p>WCWSS DAM STORAGE (%)</p> <p>99.6</p>	<p>WEEKLY DAM LEVEL CHANGE (%)</p> <p>-0.80</p>	<p>AVERAGE TOTAL DAILY WATER USE (MLD)</p> <p>812</p>
---	--	--

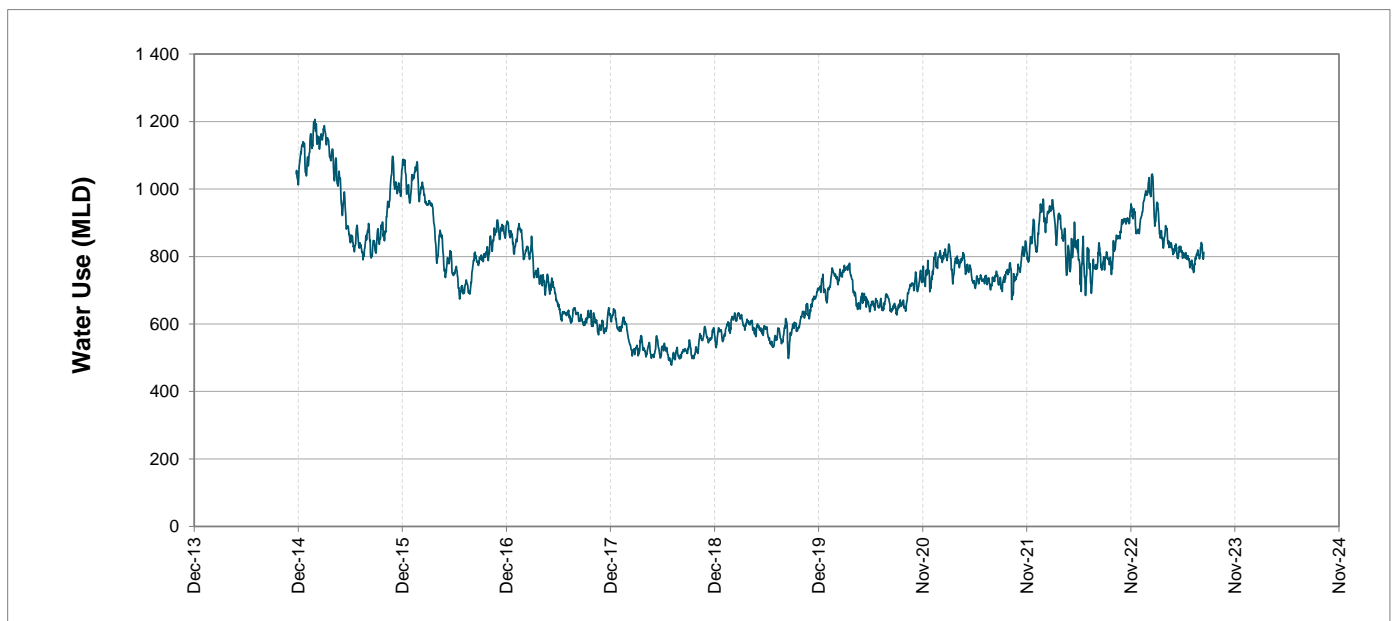
Water Resource Status

WATER RESOURCE STATUS	MEANING OF CURRENT STATUS
Wise Water Use	<p>Although early winter rains have been above average, the City will continue to monitor these levels. It is important to continue using water wisely.</p> <p>Note: The Water Resource status is updated every three (3) months. It will next be updated in August.</p>

Water Production from Different Sources

<p>MAJOR DAMS (MLD)</p> <p>799</p>	<p>MINOR DAMS (MLD)</p> <p>13</p>	<p>GROUND WATER AND SPRINGS (MLD)</p> <p>0</p>
---	--	---

Overall Water Usage Trend (2010 - Present)



WCWSS means Western Cape Water Supply System

MLD means million litres per day

More information on Water Saving and Restrictions is available on the City of Cape Town's 'ThinkWater' website

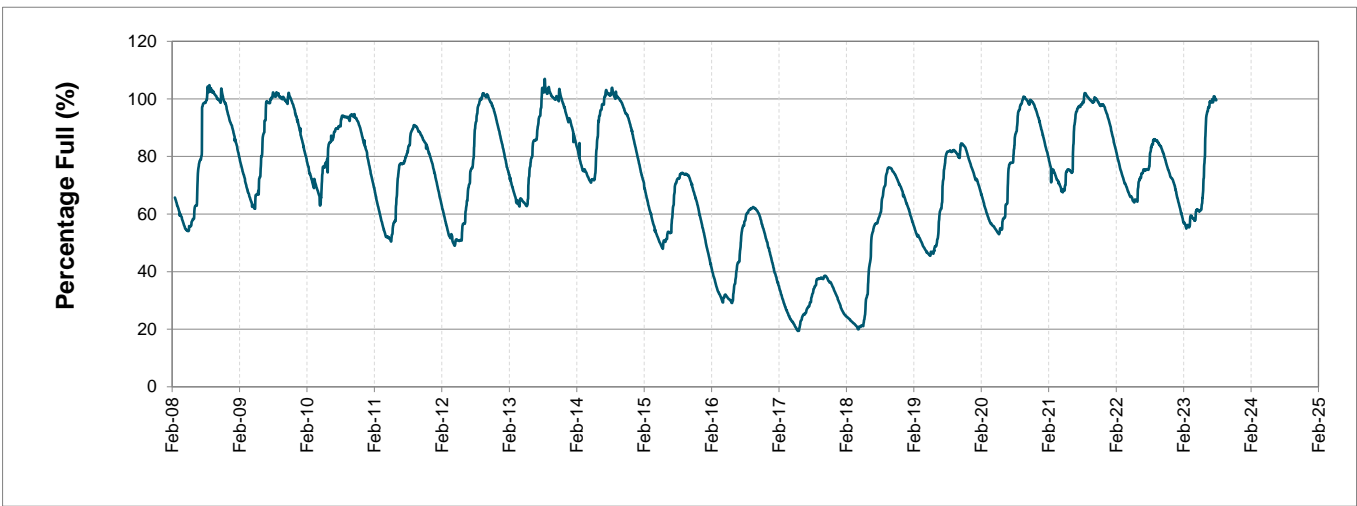
Water Stored in Major Dams (WCWSS)

Overall Percentage Full **99.6%**

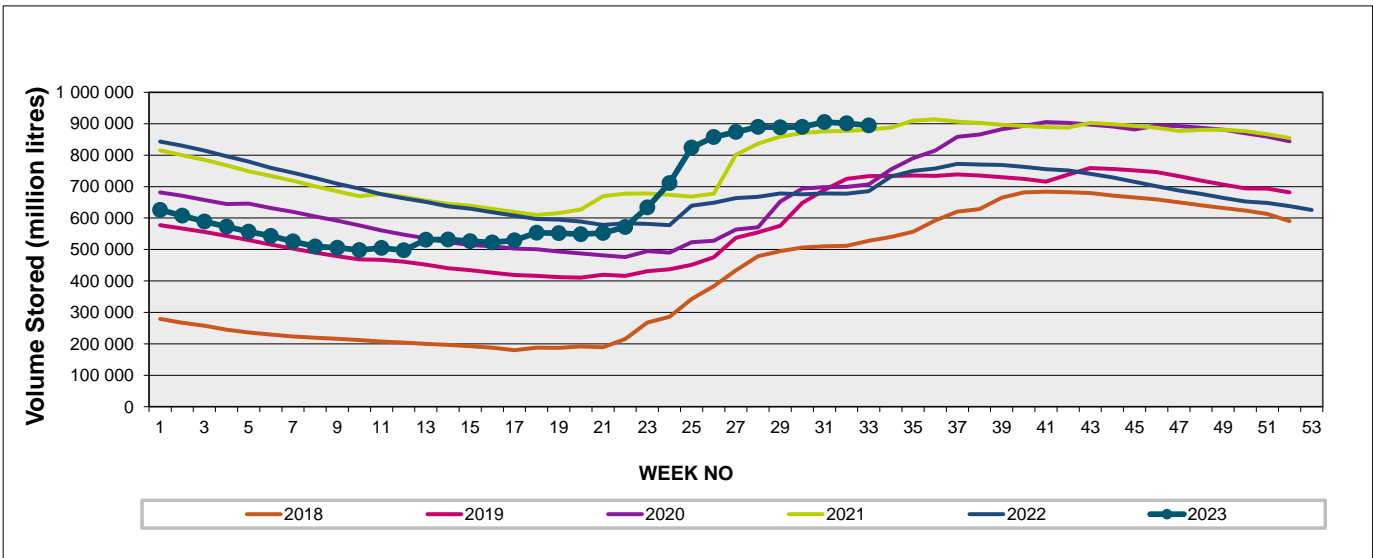
Weekly Change **-0.8%**

MAJOR DAMS (WCWSS)	STORAGE						
	CAPACITY	%	%	%	%	%	%
	MI	14 August 2023	Previous week	2022	2021	2020	2019
BERG RIVER	130 010	100.1	100.3	89.8	100.5	101.3	100.8
STEENBRAS LOWER	33 517	100.5	102.9	80.5	90.4	84.1	100.0
STEENBRAS UPPER	31 767	101.9	100.9	87.9	86.9	98.7	99.7
THEEWATERSKLOOF	480 188	101.0	102.7	76.6	101.9	79.0	71.2
VOËLVLEI	164 095	94.5	93.2	63.1	88.9	76.6	84.5
WEMMERSHOEK	58 644	100.0	100.0	66.3	97.8	78.2	86.1
TOTAL STORED	898 221	894 820	901 647	682 037	881 116	742 064	727 237
% STORAGE		99.6%	100.4%	75.9%	98.1%	82.6%	81.0%

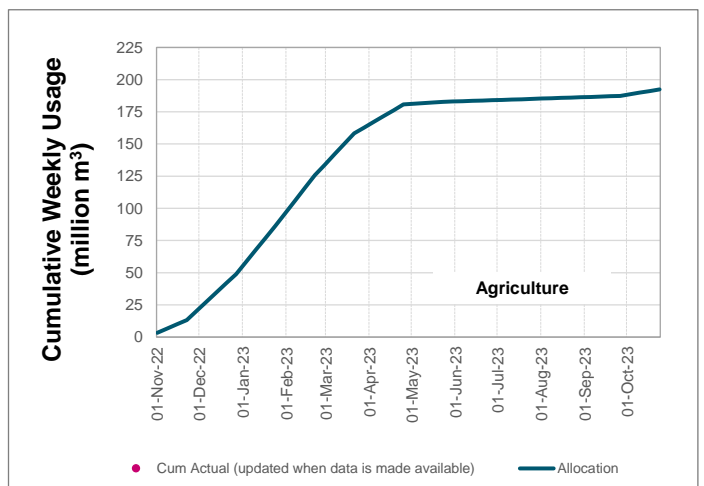
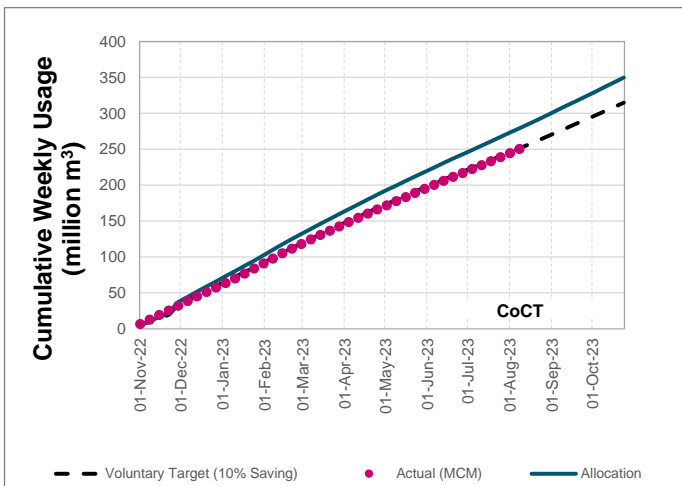
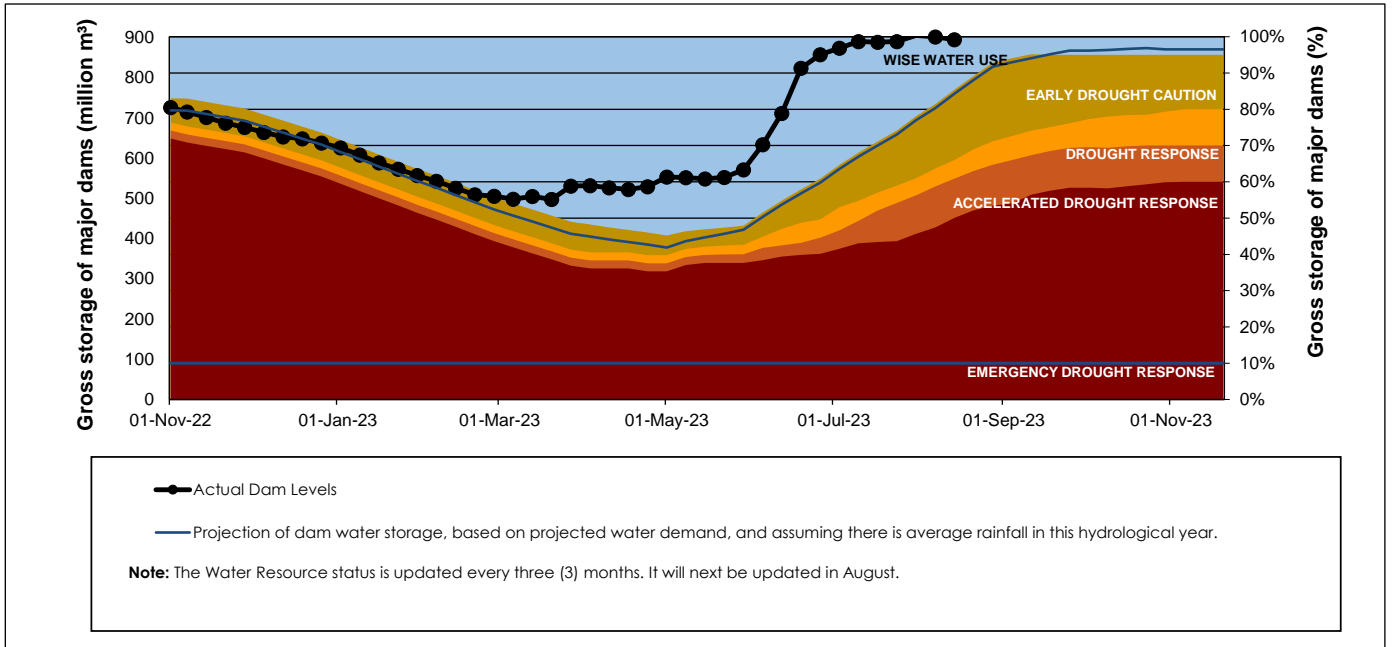
WCWSS Storage Record (2008 - Present)



WCWSS Comparative Storage Graph



Projected WCWSS Dam Storage Levels



Water Stored in Minor Dams

Overall Percentage Full **95.1**

Weekly Change **-0.51**

MINOR DAMS	STORAGE						
	CAPACITY	%	%	%	%	%	%
	MI	14 August 2023	Previous week	2022	2021	2020	2019
ALEXANDRA (Table Mountain)	126	91.6	98.7	100.0	42.7	91.9	68.7
DE VILLIERS (Table Mountain)	243	100.2	101.4	88.8	93.9	102.3	100.5
HELY-HUTCHINSON (Table Mount)	925	99.3	99.8	104.2	100.0	100.8	100.2
KLEINPLAATS (Simon's Town)	1 368	97.5	92.3	58.3	100.0	69.2	77.3
LAND-EN-ZEEZICHT (Helderberg)	451	99.4	99.4	78.8	100.0	81.4	78.4
LEWIS GAY (Simon's Town)	182	100.9	100.9	32.7	100.9	87.6	98.2
VICTORIA (Table Mountain)	128	100.4	99.6	101.5	95.4	101.2	100.8
WOODHEAD (Table Mountain)	954	88.2	96.0	80.4	92.0	101.0	97.0
Total Stored	4 377	4163.9	4186.4	3397.4	4153.5	3830.5	3859.5
Percentages stored		95.1	95.6	77.6	94.9	87.5	88.2

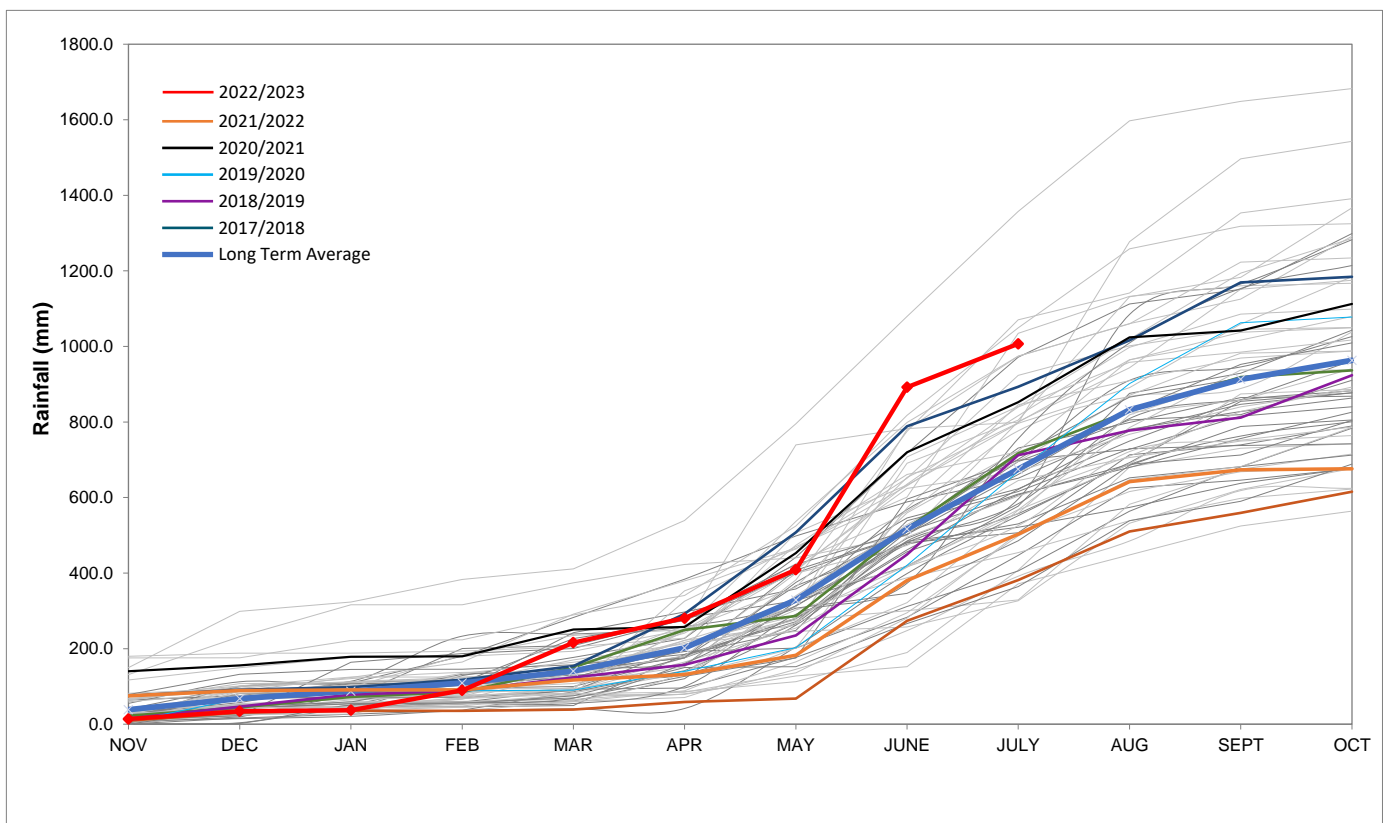
Rainfall Recorded

RAINFALL (mm)	07-Aug	08-Aug	09-Aug	10-Aug	11-Aug	12-Aug	13-Aug	Aug	
								Total*	LT Average
Blackheath Upper	0.0	0.0	0.0	0.0	0.0	0.0	0.0	0.0	77.7
Brooklands	3.0	0.0	0.0	0.0	0.0	0.0	0.0	3.0	135.1
Newlands	0.0	0.8	0.0	0.0	0.0	1.0	0.0	1.8	237.0
Steenbras	2.8	0.0	0.0	0.0	0.0	1.6	2.5	6.9	127.1
Table Mountain (Woodhead)	0.2	0.0	0.0	0.0	0.0	4.5	0.2	4.7	215.8
Theewaterskloof	1.0	1.2	0.0	0.0	0.0	0.0	0.0	2.2	76.0
Tygerberg	2.2	0.0	0.0	0.0	0.0	1.0	0.0	3.2	86.5
Voëlvlei	0.0	0.0	0.0	0.0	0.0	0.2	0.0	0.2	90.2
Wemmershoek	0.0	0.0	0.0	0.0	0.0	0.0	0.0	0.0	146.0
Wynberg	0.0	0.0	0.0	0.0	0.0	0.0	0.0	0.0	191.1

Notes: *Total/cummulative rainfall for month indicated above
LT: Long Term

Accumulated Monthly Rainfall at Wemmershoek

Note: Wemmershoek station used due to long record and mountainous location



Drinking Water Quality

SAMPLE PASS RATE

Month	Water Quality Compliance (%)	Target (%)
Nov-21	99.11	98
Dec-21	99.09	98
Jan-22	99.04	98
Feb-22	99.04	98
Mar-22	98.99	98
Apr-22	98.96	98
May-22	98.90	98
Jun-22	98.96	98
Jul-22	99.46	99
Aug-22	99.47	99
Sep-22	99.46	98.50
Oct-22	99.47	98.50
Nov-22	99.45	98.50
Dec-22	99.36	98.50
Jan-23	99.36	98.50
Feb-23	99.35	98.50
Mar-23	99.29	98.50
Apr-23	99.24	98.50
May-23	99.24	98.50
Jun-23	99.18	98.50

This table shows CCT drinking water quality compliance according to the South African National Standard 241:2015. Compliance, measured against all prescribed chemical and microbiological components, consistently exceeds the very high CCT target of 98.5%. (Overall compliance percentages of continuous sampling and analysis are released on a monthly basis.)