



Headline Statistics

<p>WCWSS DAM STORAGE (%)</p> <p>100.4</p>	<p>WEEKLY DAM LEVEL CHANGE (%)</p> <p>-0.40</p>	<p>AVERAGE TOTAL DAILY WATER USE (MLD)</p> <p>831</p>
--	--	--

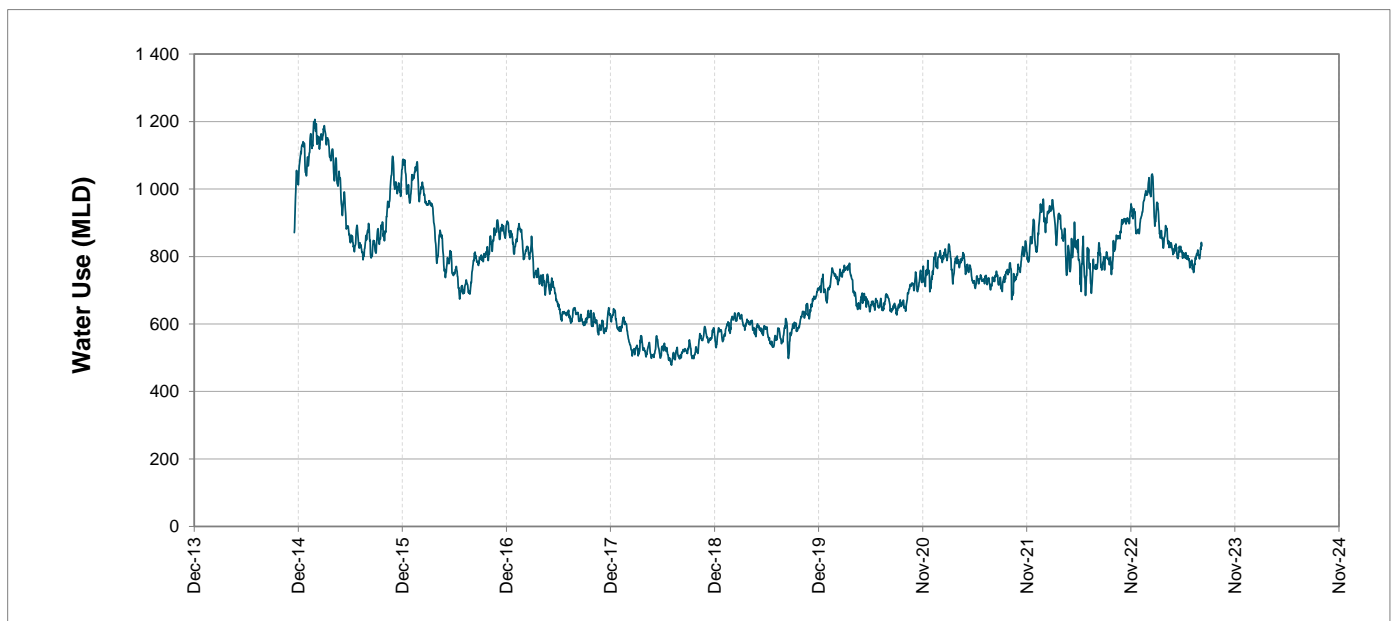
Water Resource Status

WATER RESOURCE STATUS	MEANING OF CURRENT STATUS
Wise Water Use	<p>Although early winter rains have been above average, the City will continue to monitor these levels. It is important to continue using water wisely.</p> <p>Note: The Water Resource status is updated every three (3) months. It will next be updated in August.</p>

Water Production from Different Sources

<p>MAJOR DAMS (MLD)</p> <p>817</p>	<p>MINOR DAMS (MLD)</p> <p>14</p>	<p>GROUND WATER AND SPRINGS (MLD)</p> <p>0</p>
---	--	---

Overall Water Usage Trend (2010 - Present)



WCWSS means Western Cape Water Supply System

MLD means million litres per day

More information on Water Saving and Restrictions is available on the City of Cape Town's 'ThinkWater' website

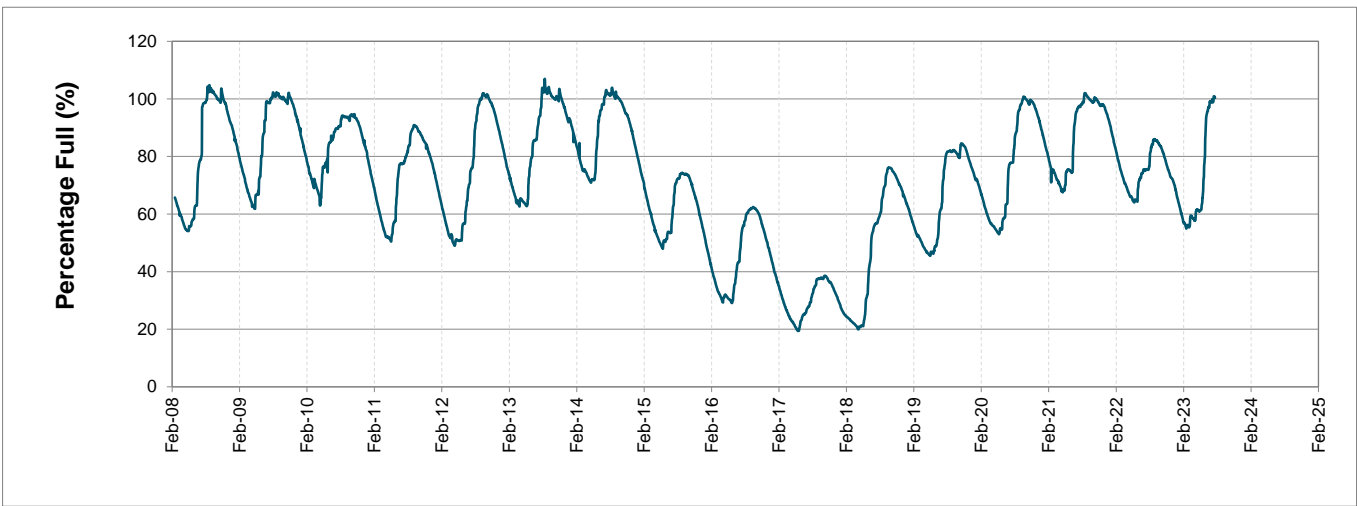
Water Stored in Major Dams (WCWSS)

Overall Percentage Full **100.4%**

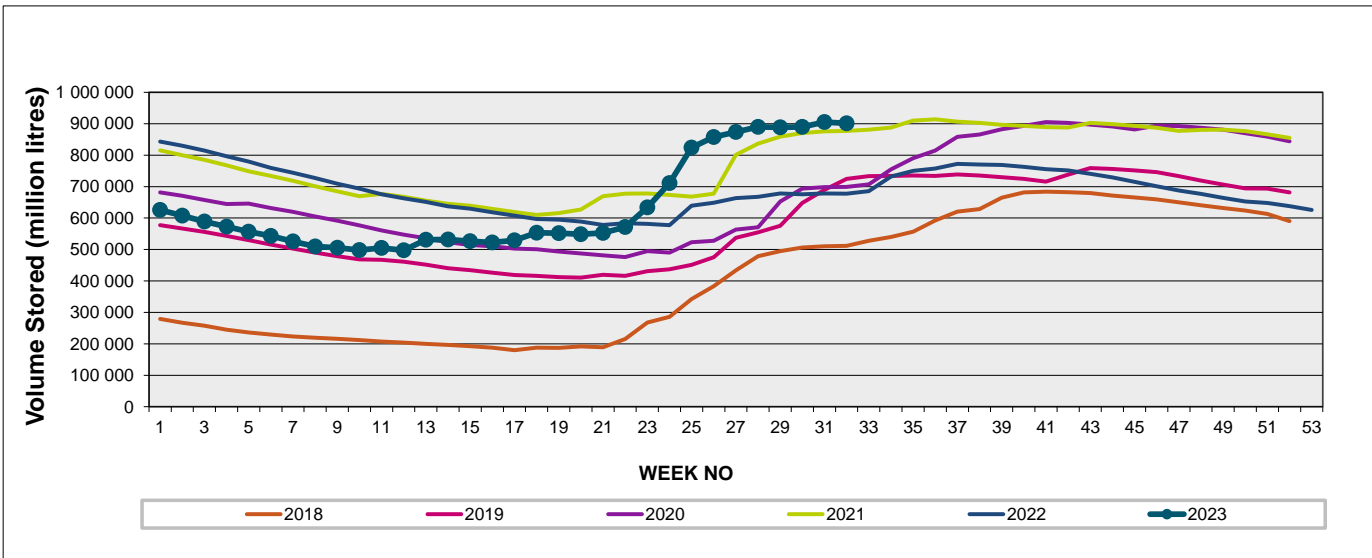
Weekly Change **-0.4%**

MAJOR DAMS (WCWSS)	STORAGE						
	CAPACITY	%	%	%	%	%	%
	MI	07 August 2023	Previous week	2022	2021	2020	2019
BERG RIVER	130 010	100.3	102.0	88.7	100.2	97.0	101.4
STEENBRAS LOWER	33 517	102.9	104.2	79.0	88.3	77.9	92.2
STEENBRAS UPPER	31 767	100.9	101.7	87.0	85.2	98.2	100.8
THEEWATERSKLOOF	480 188	102.7	104.1	76.4	101.4	73.6	67.5
VOËLVLEI	164 095	93.2	89.5	63.1	87.3	73.4	80.1
WEMMERSHOEK	58 644	100.0	100.2	65.2	97.2	71.6	80.6
TOTAL STORED	898 221	901 647	905 260	678 160	874 091	699 207	697 494
% STORAGE		100.4%	100.8%	75.5%	97.3%	77.8%	77.7%

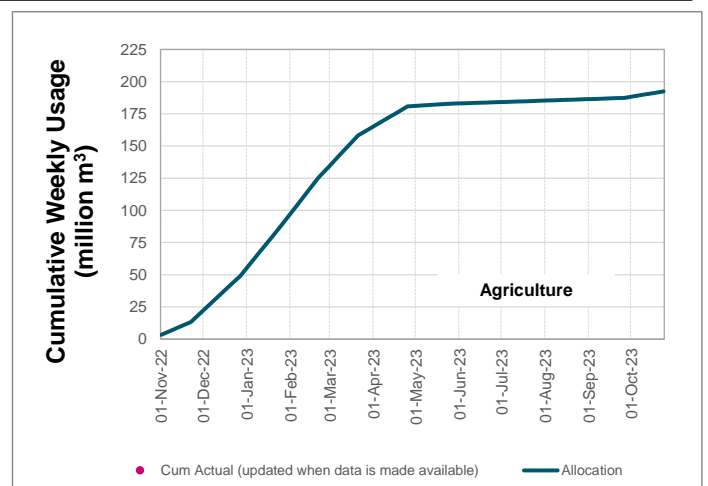
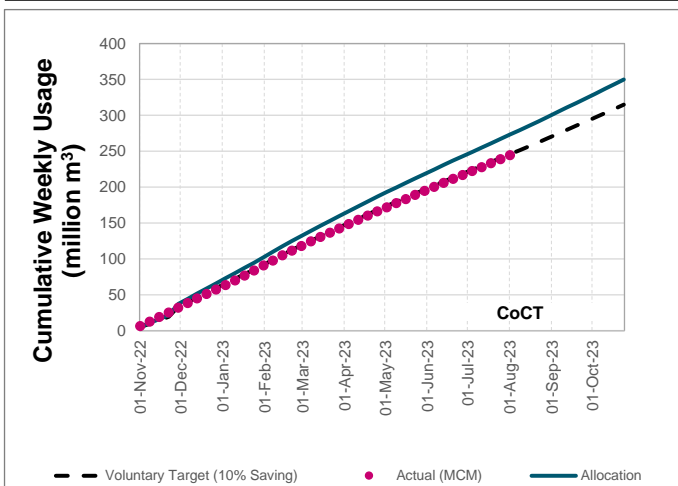
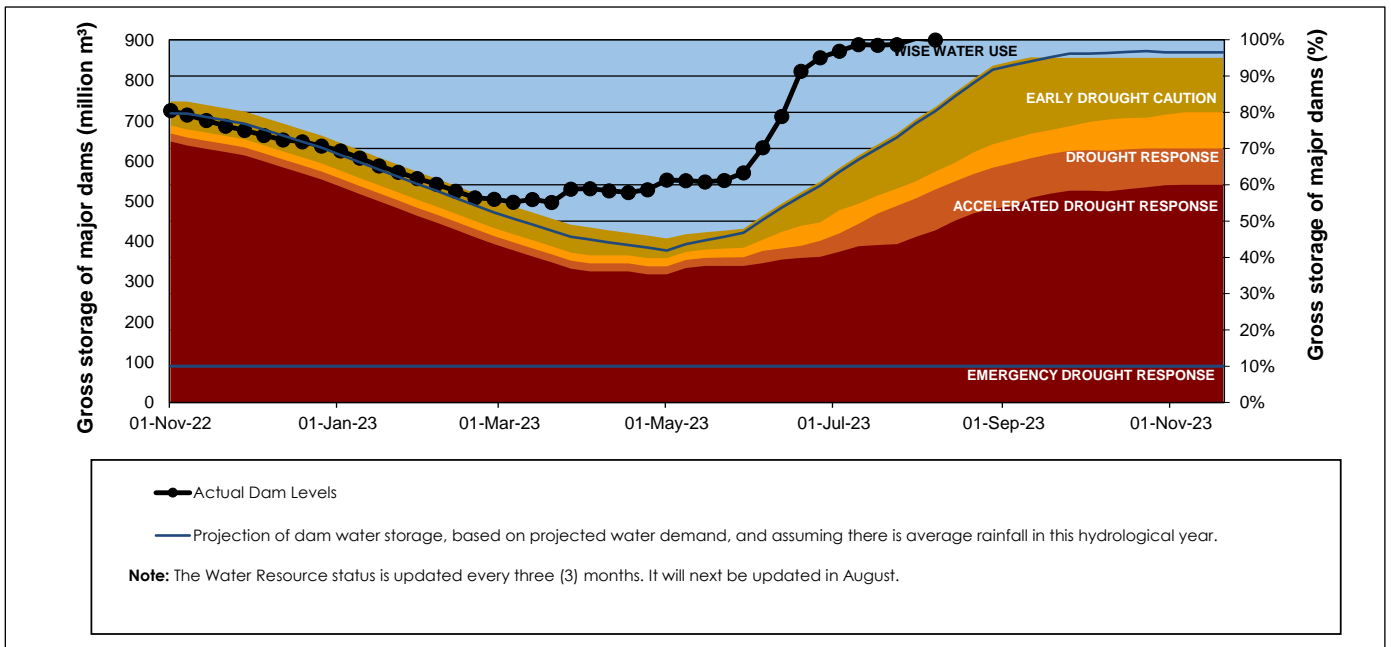
WCWSS Storage Record (2008 - Present)



WCWSS Comparative Storage Graph



Projected WCWSS Dam Storage Levels



Water Stored in Minor Dams

Overall Percentage Full **95.6**

Weekly Change **-0.83**

MINOR DAMS	STORAGE						
	CAPACITY	%	%	%	%	%	%
	MI	07 August 2023	Previous week	2022	2021	2020	2019
ALEXANDRA (Table Mountain)	126	98.7	100.0	94.6	40.8	78.8	39.5
DE VILLIERS (Table Mountain)	243	101.4	101.2	87.9	93.1	100.0	100.9
HELY-HUTCHINSON (Table Mount)	925	99.8	101.4	99.8	100.2	99.5	101.4
KLEINPLAATS (Simon's Town)	1 368	92.3	90.0	55.7	100.0	63.5	69.9
LAND-EN-ZEEZICHT (Helderberg)	451	99.4	99.4	77.4	98.2	77.5	79.4
LEWIS GAY (Simon's Town)	182	100.9	100.9	35.7	100.9	83.0	89.5
VICTORIA (Table Mountain)	128	99.6	101.5	100.8	88.5	99.6	96.6
WOODHEAD (Table Mountain)	954	96.0	101.2	67.2	92.4	99.8	100.3
Total Stored	4 377	4186.4	4222.9	3184.3	4136.7	3681.1	3751.6
Percentages stored		95.6	96.5	72.7	94.5	84.1	85.7

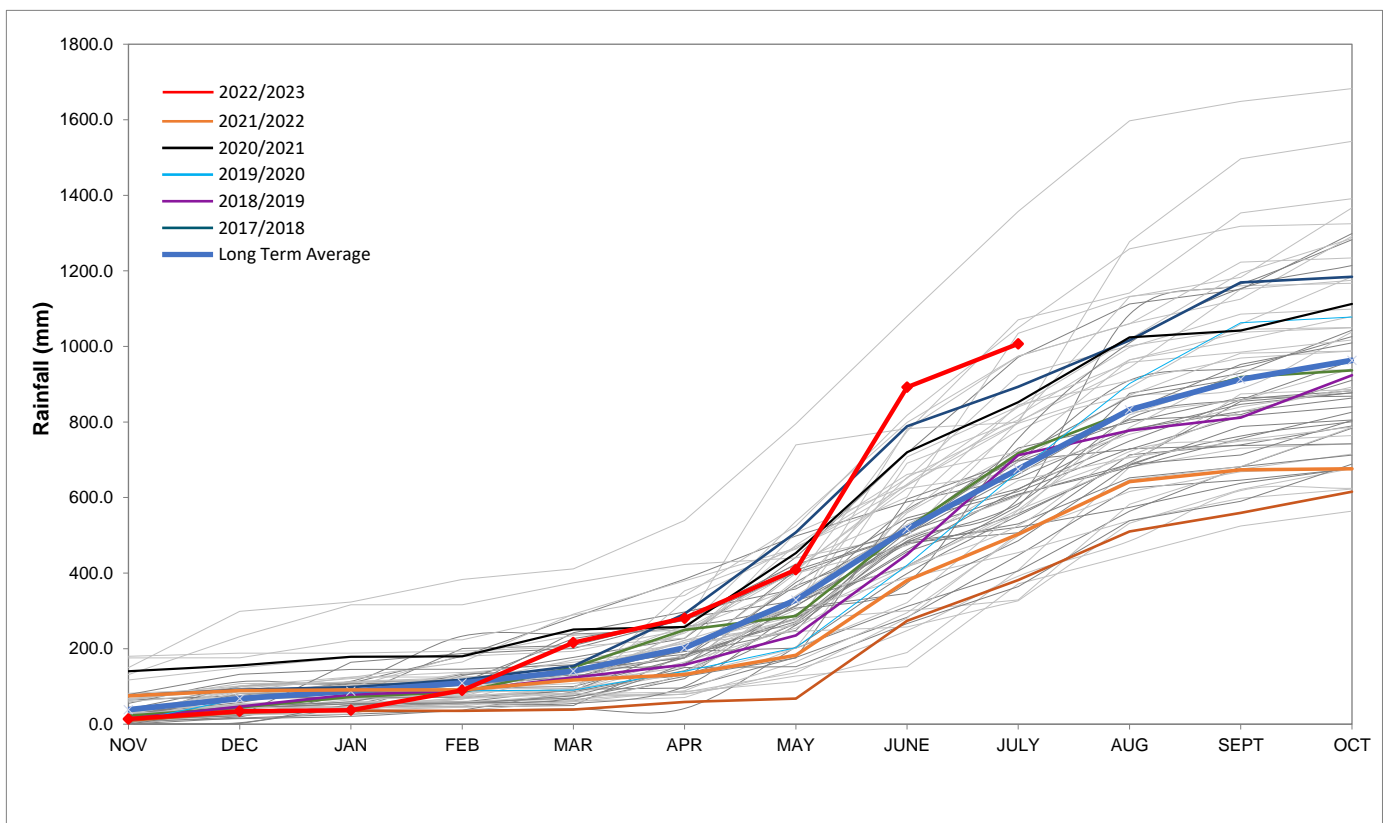
Rainfall Recorded

RAINFALL (mm)	31-Jul	01-Aug	02-Aug	03-Aug	04-Aug	05-Aug	06-Aug	Aug	
								Total*	LT Average
Blackheath Upper	0.0	0.0	0.0	0.0	0.0	0.0	0.0	0.0	77.7
Brooklands	0.0	0.0	0.0	0.0	0.0	0.0	0.0	0.0	135.1
Newlands	0.0	0.0	0.0	0.0	0.0	0.0	0.0	0.0	237.0
Steenbras	0.0	0.0	0.0	0.0	0.0	0.0	0.0	0.0	127.1
Table Mountain (Woodhead)	0.0	0.0	0.0	0.0	0.0	0.0	0.0	0.0	215.8
Theewaterskloof	0.0	0.0	0.0	0.0	0.0	0.0	0.0	0.0	76.0
Tygerberg	0.0	0.0	0.0	0.0	0.0	0.0	0.0	0.0	86.5
Voëlvlei	0.0	0.0	0.0	0.0	0.0	0.0	0.0	0.0	90.2
Wemmershoek	0.0	0.0	0.0	0.0	0.0	0.0	0.0	0.0	146.0
Wynberg	0.0	0.0	0.0	0.0	0.0	0.0	0.0	0.0	191.1

Notes: *Total/cummulative rainfall for month indicated above
LT: Long Term

Accumulated Monthly Rainfall at Wemmershoek

Note: Wemmershoek station used due to long record and mountainous location



Drinking Water Quality

SAMPLE PASS RATE

Month	Water Quality Compliance (%)	Target (%)
Nov-21	99.11	98
Dec-21	99.09	98
Jan-22	99.04	98
Feb-22	99.04	98
Mar-22	98.99	98
Apr-22	98.96	98
May-22	98.90	98
Jun-22	98.96	98
Jul-22	99.46	99
Aug-22	99.47	99
Sep-22	99.46	98.50
Oct-22	99.47	98.50
Nov-22	99.45	98.50
Dec-22	99.36	98.50
Jan-23	99.36	98.50
Feb-23	99.35	98.50
Mar-23	99.29	98.50
Apr-23	99.24	98.50
May-23	99.24	98.50
Jun-23	99.18	98.50

This table shows CCT drinking water quality compliance according to the South African National Standard 241:2015. Compliance, measured against all prescribed chemical and microbiological components, consistently exceeds the very high CCT target of 98.5%. (Overall compliance percentages of continuous sampling and analysis are released on a monthly basis.)