



Headline Statistics

WCWSS DAM STORAGE (%)

**99.1**

WEEKLY DAM LEVEL CHANGE (%)

**1.80**

AVERAGE TOTAL DAILY WATER USE (MLD)

**755**

Water Resource Status

WATER RESOURCE STATUS	MEANING OF CURRENT STATUS
Wise Water Use	<p>Although early winter rains have been above average, the City remains concerned about the storage levels in Voelvlei dam, and will continue to monitor these levels. It is important to continue using water wisely.</p> <p><b>Note:</b> The Water Resource status is updated every three (3) months. It will next be updated in August.</p>

Water Production from Different Sources

MAJOR DAMS (MLD)

**742**

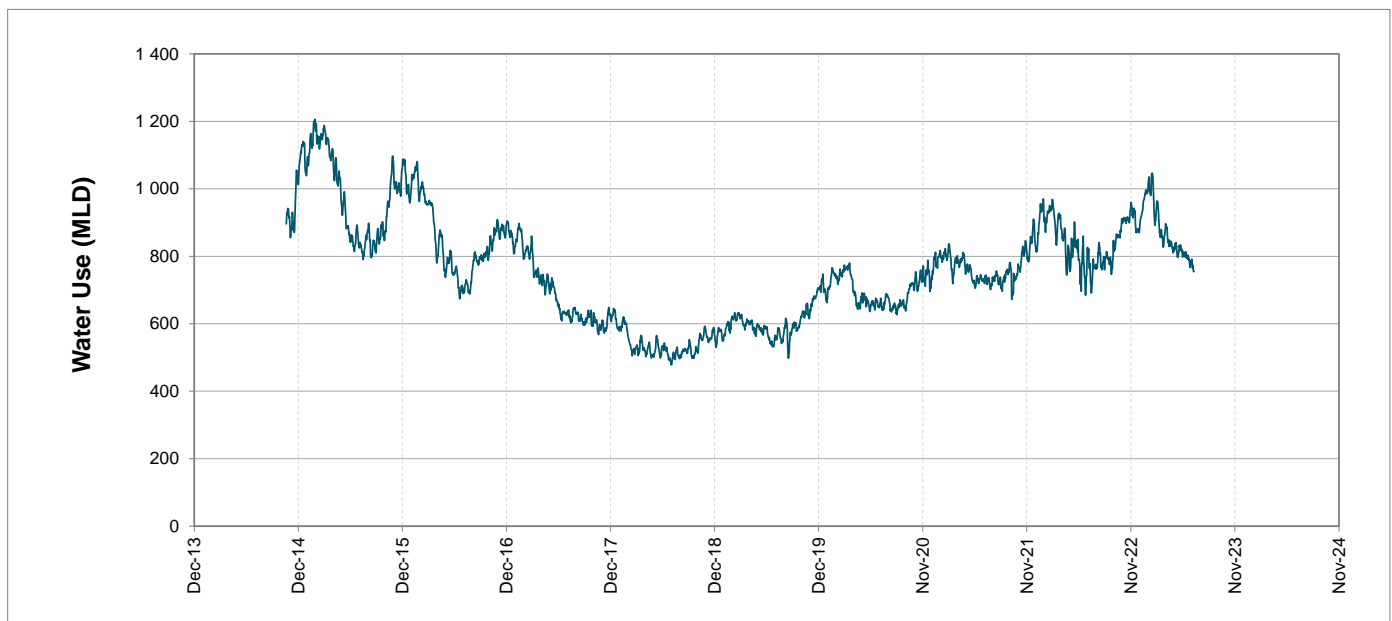
MINOR DAMS (MLD)

**13**

GROUND WATER AND SPRINGS (MLD)

**0**

Overall Water Usage Trend (2010 - Present)



WCWSS means Western Cape Water Supply System

MLD means million litres per day

More information on Water Saving and Restrictions is available on the City of Cape Town's 'ThinkWater' website

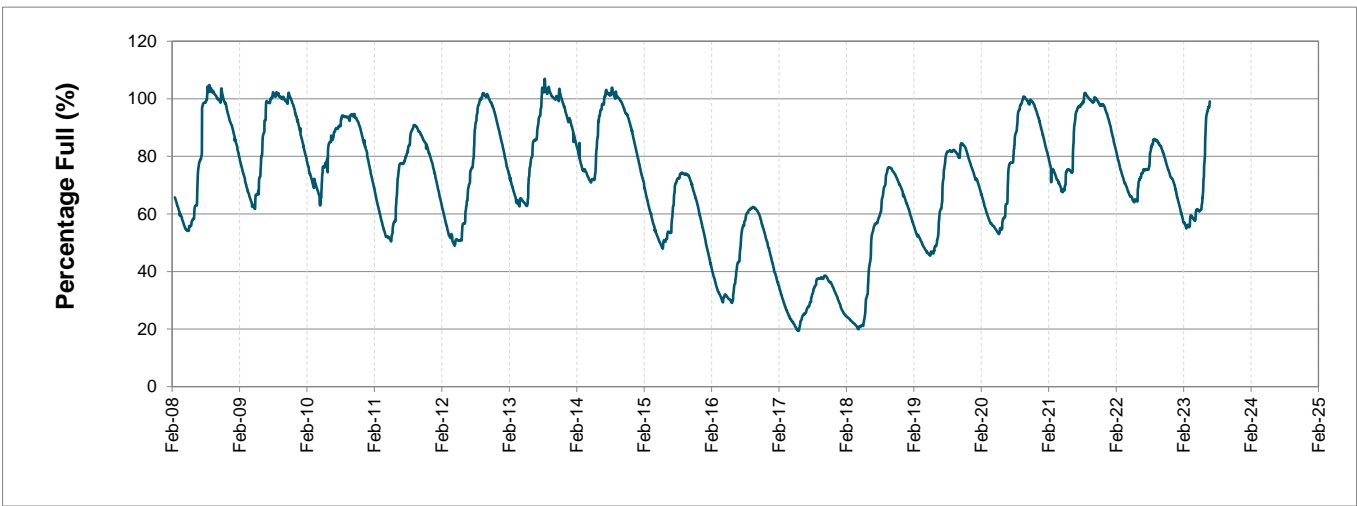
# Water Stored in Major Dams (WCWSS)

Overall Percentage Full **99.1%**

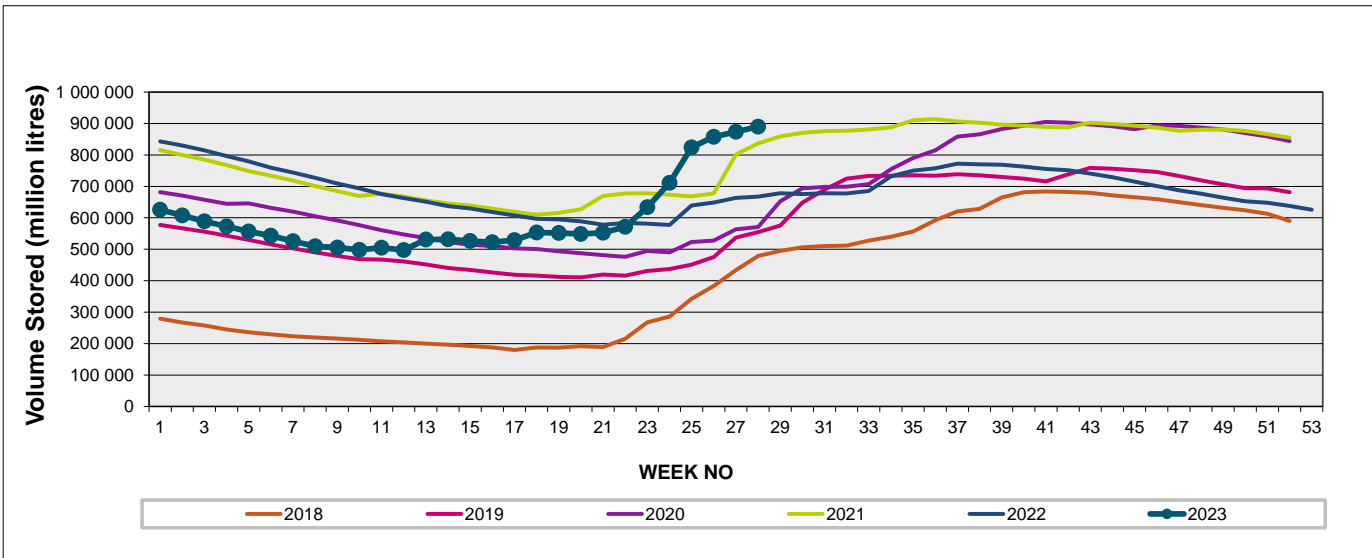
Weekly Change **1.8%**

MAJOR DAMS (WCWSS)	STORAGE						
	CAPACITY	%	%	%	%	%	%
	MI	10 July 2023	Previous week	2022	2021	2020	2019
BERG RIVER	130 010	101.3	100.7	84.4	100.9	86.1	90.1
STEENBRAS LOWER	33 517	102.3	101.8	78.6	79.1	62.6	54.0
STEENBRAS UPPER	31 767	101.1	101.3	93.6	74.2	101.2	83.8
THEEWATERSKLOOF	480 188	104.4	102.8	75.8	98.0	61.6	51.2
VOËLVLEI	164 095	80.4	75.7	61.9	74.2	59.2	65.9
WEMMERSHOEK	58 644	100.0	99.9	60.6	90.0	56.3	52.7
<b>TOTAL STORED</b>	<b>898 221</b>	<b>889 978</b>	<b>873 609</b>	<b>666 925</b>	<b>826 466</b>	<b>590 967</b>	<b>546 844</b>
<b>% STORAGE</b>		<b>99.1%</b>	<b>97.3%</b>	<b>74.2%</b>	<b>92.0%</b>	<b>65.8%</b>	<b>60.9%</b>

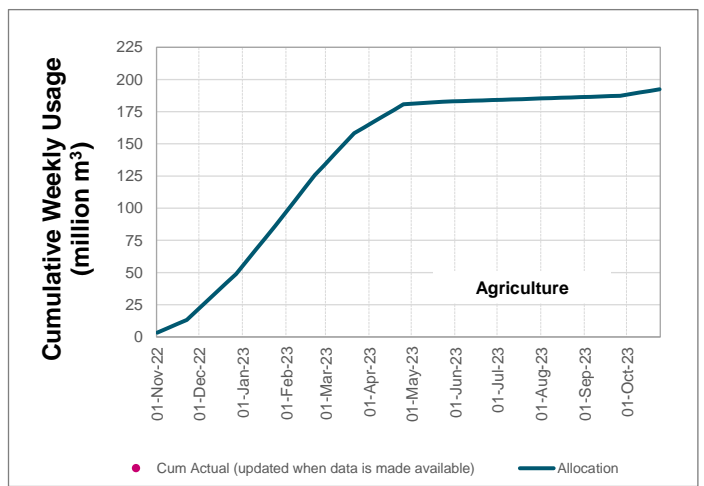
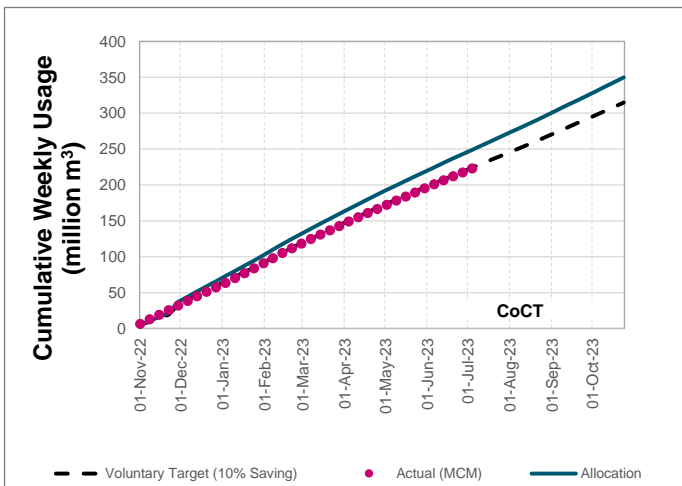
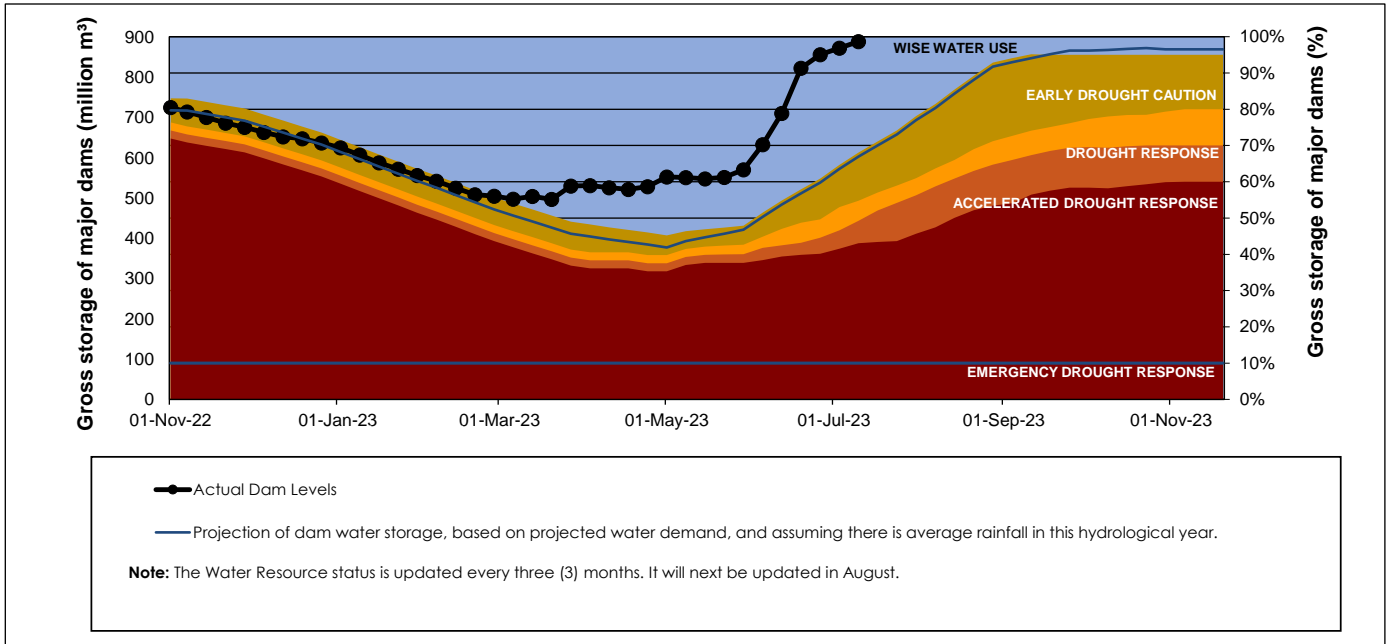
## WCWSS Storage Record (2008 - Present)



## WCWSS Comparative Storage Graph



# Projected WCWSS Dam Storage Levels



## Water Stored in Minor Dams

Overall Percentage Full **91.9**

Weekly Change **No Data**

MINOR DAMS	STORAGE						
	CAPACITY	%	%	%	%	%	%
	MI	10 July 2023	Previous week	2022	2021	2020	2019
ALEXANDRA (Table Mountain)	126	97.6	No data	75.6	33.4	64.1	31.7
DE VILLIERS (Table Mountain)	243	100.3	No data	93.7	91.7	100.3	100.2
HELY-HUTCHINSON (Table Mount)	925	101.4	No data	100.5	100.8	98.6	99.7
KLEINPLAATS (Simon's Town)	1 368	75.5	69.7	47.4	69.9	44.9	51.1
LAND-EN-ZEEZICHT (Helderberg)	451	99.4	99.4	78.5	84.3	70.8	84.5
LEWIS GAY (Simon's Town)	182	100.9	100.9	57.1	100.9	73.9	18.6
VICTORIA (Table Mountain)	128	100.8	No data	100.4	66.7	101.2	75.6
WOODHEAD (Table Mountain)	954	100.6	No data	57.5	100.0	99.9	100.3
<b>Total Stored</b>	<b>4 377</b>	<b>4023.6</b>	<b>No data</b>	<b>3020.3</b>	<b>3717.7</b>	<b>3368.0</b>	<b>3358.4</b>
<b>Percentages stored</b>		<b>91.9</b>	<b>No data</b>	<b>69.0</b>	<b>84.9</b>	<b>76.9</b>	<b>76.7</b>

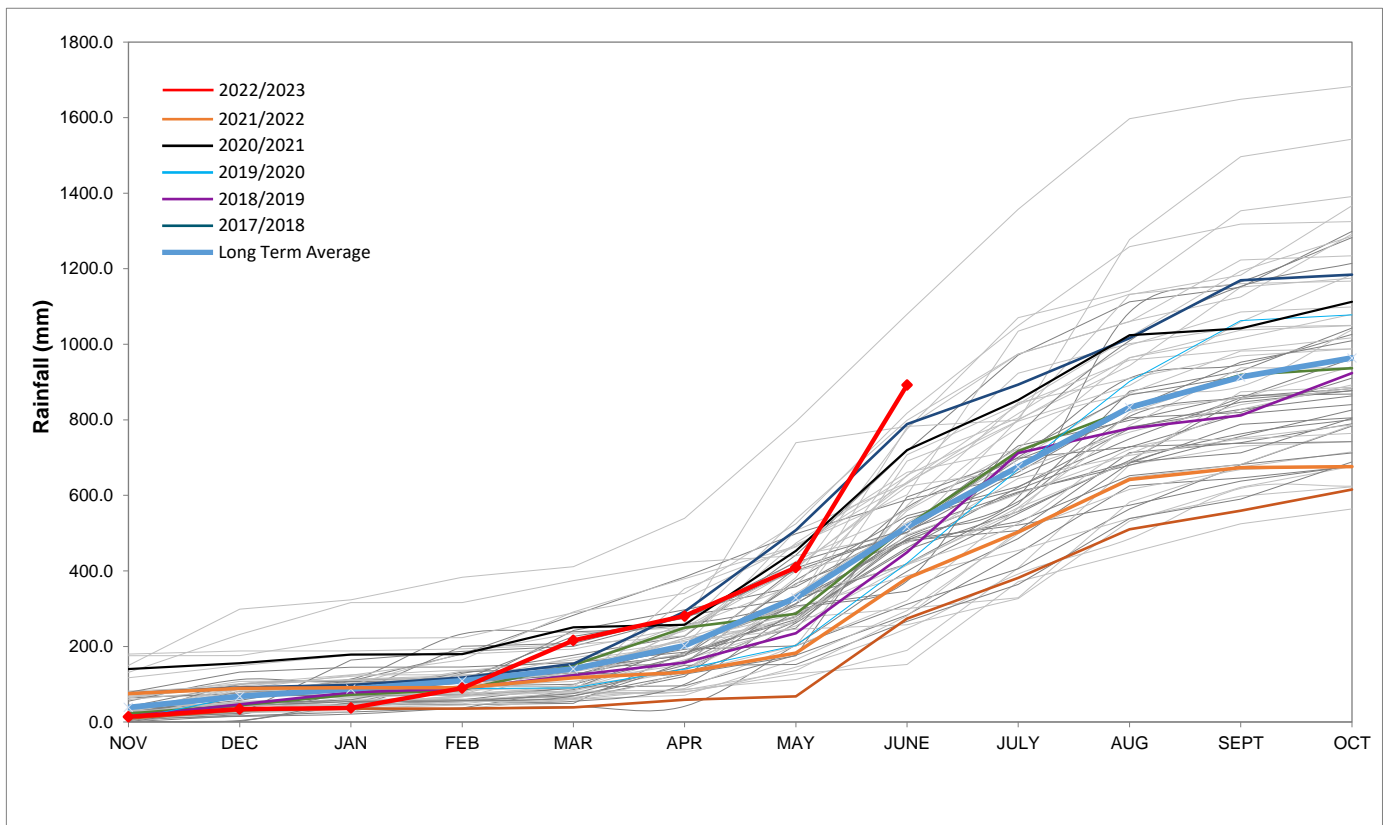
# Rainfall Recorded

RAINFALL (mm)	03-Jul	04-Jul	05-Jul	06-Jul	07-Jul	08-Jul	09-Jul	Jul	
								Total*	LT Average
Blackheath Upper	0.0	0.0	0.0	0.0	9.0	8.0	4.0	21.0	78.8
Brooklands	0.0	0.0	0.0	0.0	20.0	10.0	1.0	31.0	132.9
Newlands	0.0	0.0	0.0	0.0	34.0	24.0	3.5	61.5	289.5
Steenbras	0.0	0.0	0.0	0.0	17.5	21.0	0.7	39.2	157.8
Table Mountain (Woodhead)	0.0	0.0	0.0	0.0	31.0	19.5	2.5	53.0	244.5
Theewaterskloof	0.0	0.0	0.0	0.0	12.0	18.0	9.0	39.0	74.2
Tygerberg	0.8	0.0	0.0	0.0	11.5	10.1	4.0	26.9	93.3
Voëlvlei	0.0	0.0	0.0	0.0	5.0	17.0	0.0	22.0	101.1
Wemmershoek	0.0	0.0	0.0	0.0	32.2	15.8	4.6	54.4	172.8
Wynberg	0.0	0.0	0.0	0.0	0.0	45.0	4.0	49.0	186.4

Notes: \*Total/cummulative rainfall for month indicated above  
LT: Long Term

# Accumulated Monthly Rainfall at Wemmershoek

Note: Wemmershoek station used due to long record and mountainous location



## Drinking Water Quality

### SAMPLE PASS RATE

Month	Water Quality Compliance (%)	Target (%)
Nov-21	99.11	98
Dec-21	99.09	98
Jan-22	99.04	98
Feb-22	99.04	98
Mar-22	98.99	98
Apr-22	98.96	98
May-22	98.90	98
Jun-22	98.96	98
Jul-22	99.46	99
Aug-22	99.47	99
Sep-22	99.46	98.50
Oct-22	99.47	98.50
Nov-22	99.45	98.50
Dec-22	99.36	98.50
Jan-23	99.36	98.50
Feb-23	99.35	98.50
Mar-23	99.29	98.50
Apr-23	99.24	98.50
May-23	99.24	98.50
Jun-23	99.18	98.50

This table shows CCT drinking water quality compliance according to the South African National Standard 241:2015. Compliance, measured against all prescribed chemical and microbiological components, consistently exceeds the very high CCT target of 98.5%. (Overall compliance percentages of continuous sampling and analysis are released on a monthly basis.)