



Headline Statistics

WCWSS DAM STORAGE (%)

97.3

WEEKLY DAM LEVEL CHANGE (%)

1.80

AVERAGE TOTAL DAILY WATER USE (MLD)

791

Water Resource Status

WATER RESOURCE STATUS	MEANING OF CURRENT STATUS
Wise Water Use	<p>Although early winter rains have been above average, the City remains concerned about the storage levels in Voelvlei dam, and will continue to monitor these levels. It is important to continue using water wisely.</p> <p>Note: The Water Resource status is updated every three (3) months. It will next be updated in August.</p>

Water Production from Different Sources

MAJOR DAMS (MLD)

776

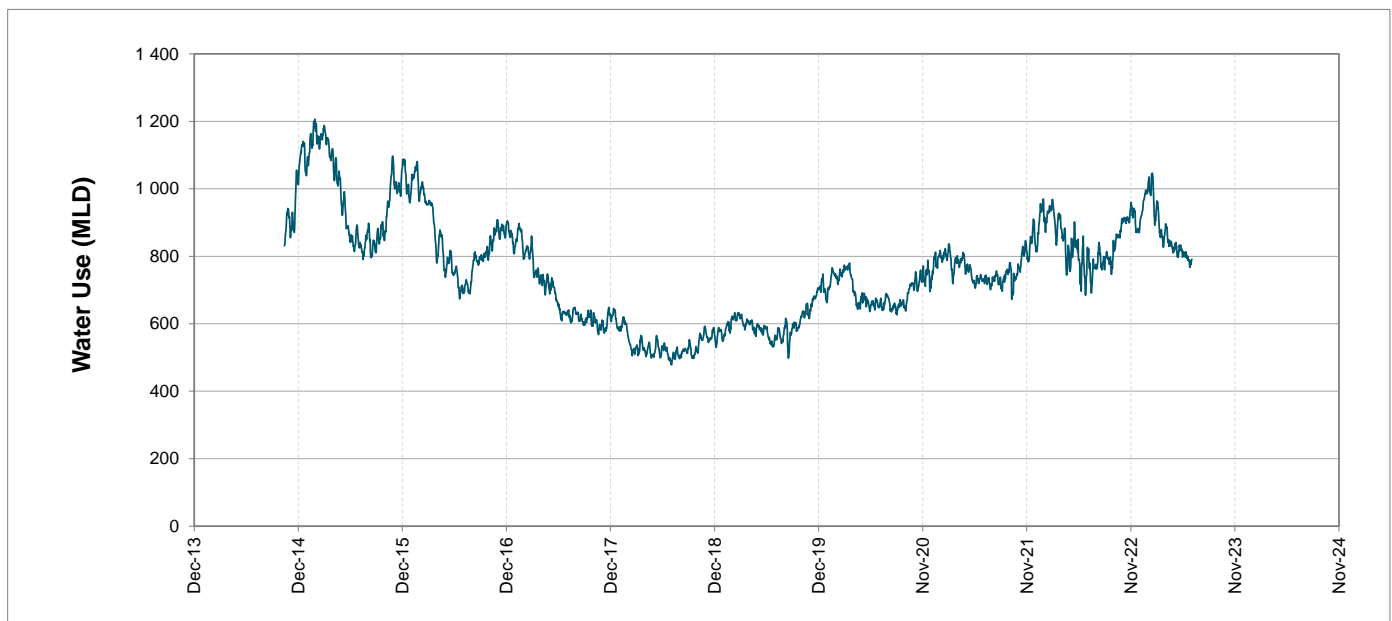
MINOR DAMS (MLD)

15

GROUND WATER AND SPRINGS (MLD)

0

Overall Water Usage Trend (2010 - Present)



WCWSS means Western Cape Water Supply System

MLD means million litres per day

More information on Water Saving and Restrictions is available on the City of Cape Town's 'ThinkWater' website

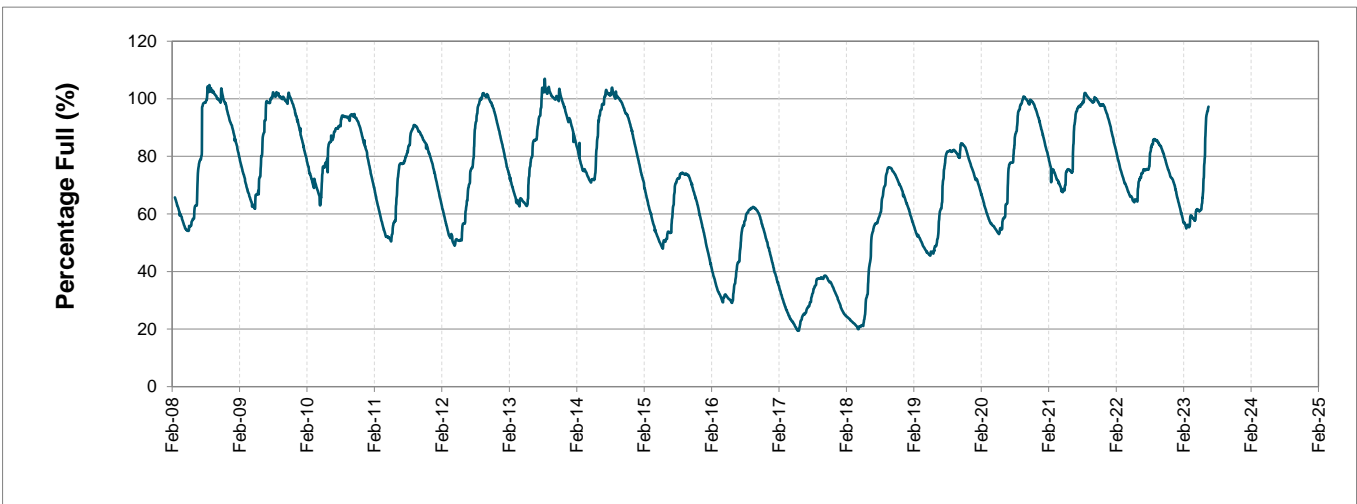
Water Stored in Major Dams (WCWSS)

Overall Percentage Full **97.3%**

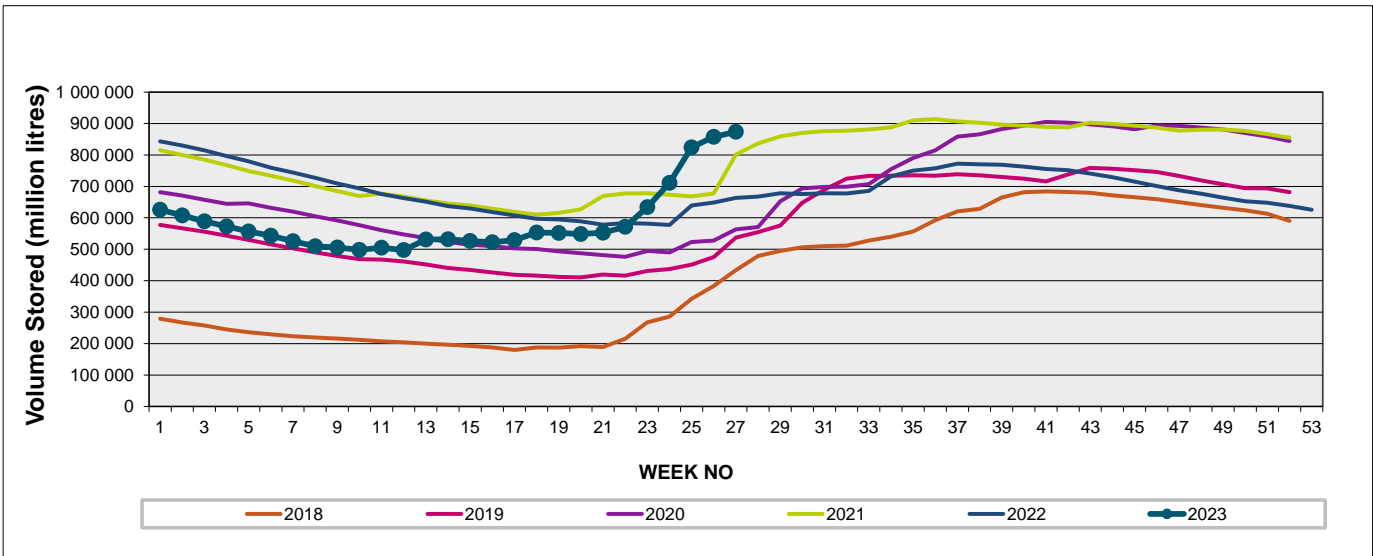
Weekly Change **1.8%**

MAJOR DAMS (WCWSS)	STORAGE						
	CAPACITY	%	%	%	%	%	%
	MI	03 July 2023	Previous week	2022	2021	2020	2019
BERG RIVER	130 010	100.7	100.7	83.6	101.7	82.3	85.0
STEENBRAS LOWER	33 517	101.8	101.0	79.4	73.8	55.9	47.4
STEENBRAS UPPER	31 767	101.3	100.3	91.8	67.3	99.1	69.9
THEEWATERSKLOOF	480 188	102.8	102.0	74.2	90.3	59.7	45.7
VOËLVLEI	164 095	75.7	68.6	61.3	66.9	58.5	60.9
WEMMERSHOEK	58 644	99.9	99.9	57.6	82.6	50.3	46.6
TOTAL STORED	898 221	873 609	857 677	655 114	770 413	569 260	495 367
% STORAGE		97.3%	95.5%	72.9%	85.8%	63.4%	55.1%

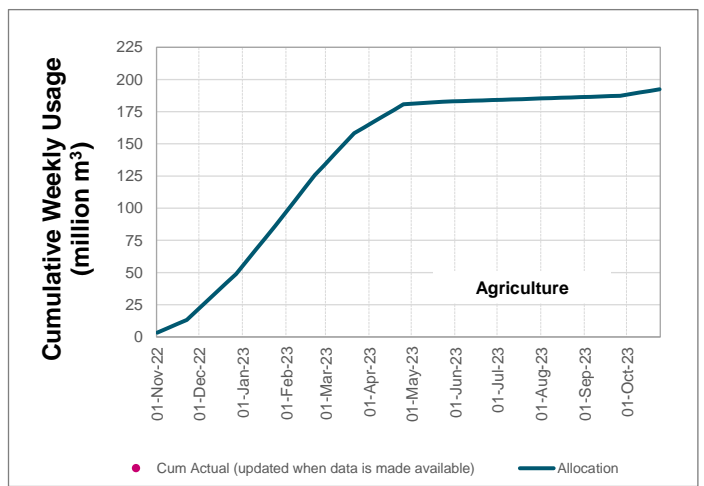
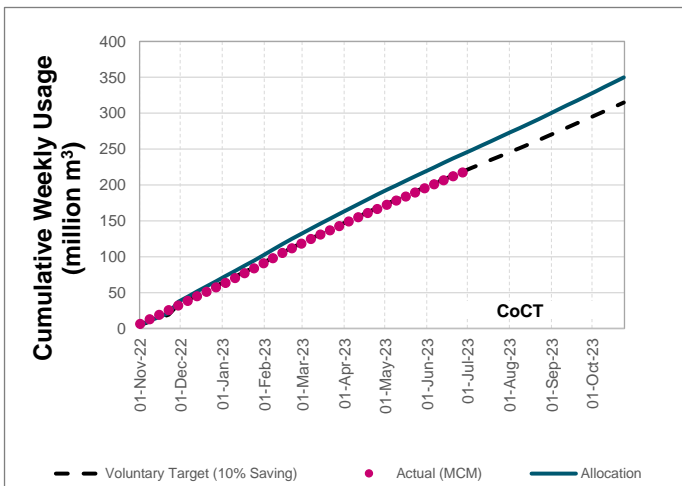
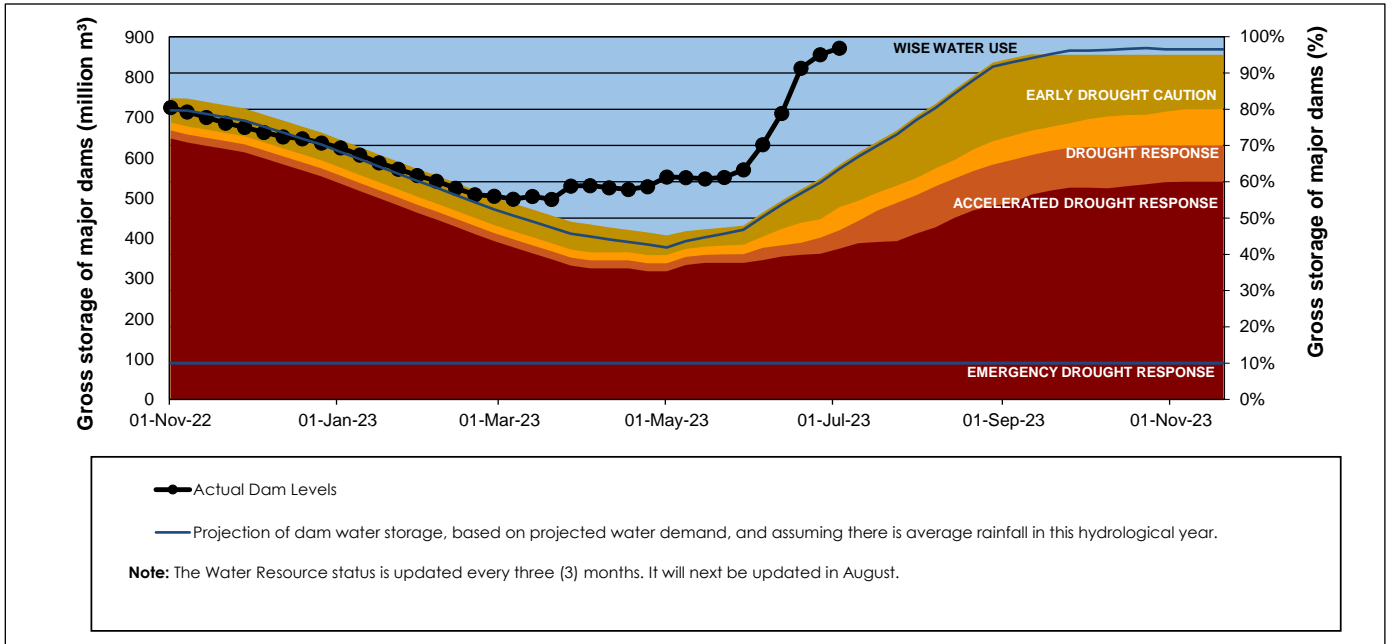
WCWSS Storage Record (2008 - Present)



WCWSS Comparative Storage Graph



Projected WCWSS Dam Storage Levels



Water Stored in Minor Dams

Overall Percentage Full **89.7**

Weekly Change **No Data**

MINOR DAMS	STORAGE						
	CAPACITY	%	%	%	%	%	%
	MI	03 July 2023	Previous week	2022	2021	2020	2019
ALEXANDRA (Table Mountain)	126	100.0	No data	74.6	27.2	59.7	16.3
DE VILLIERS (Table Mountain)	243	100.2	No data	96.0	83.4	100.0	85.1
HELY-HUTCHINSON (Table Mount)	925	100.2	No data	99.2	101.0	87.1	83.4
KLEINPLAATS (Simon's Town)	1 368	69.7	63.0	45.1	60.3	41.1	41.2
LAND-EN-ZEEZICHT (Helderberg)	451	99.4	99.4	80.0	75.0	70.9	87.0
LEWIS GAY (Simon's Town)	182	100.9	100.9	62.9	100.9	59.1	0.0
VICTORIA (Table Mountain)	128	100.8	No data	99.6	54.1	100.8	44.2
WOODHEAD (Table Mountain)	954	99.4	No data	59.0	92.8	99.5	76.0
Total Stored	4 377	3927.9	No data	3011.8	3436.7	3176.1	2729.2
Percentages stored		89.7	No data	68.8	78.5	72.6	62.4

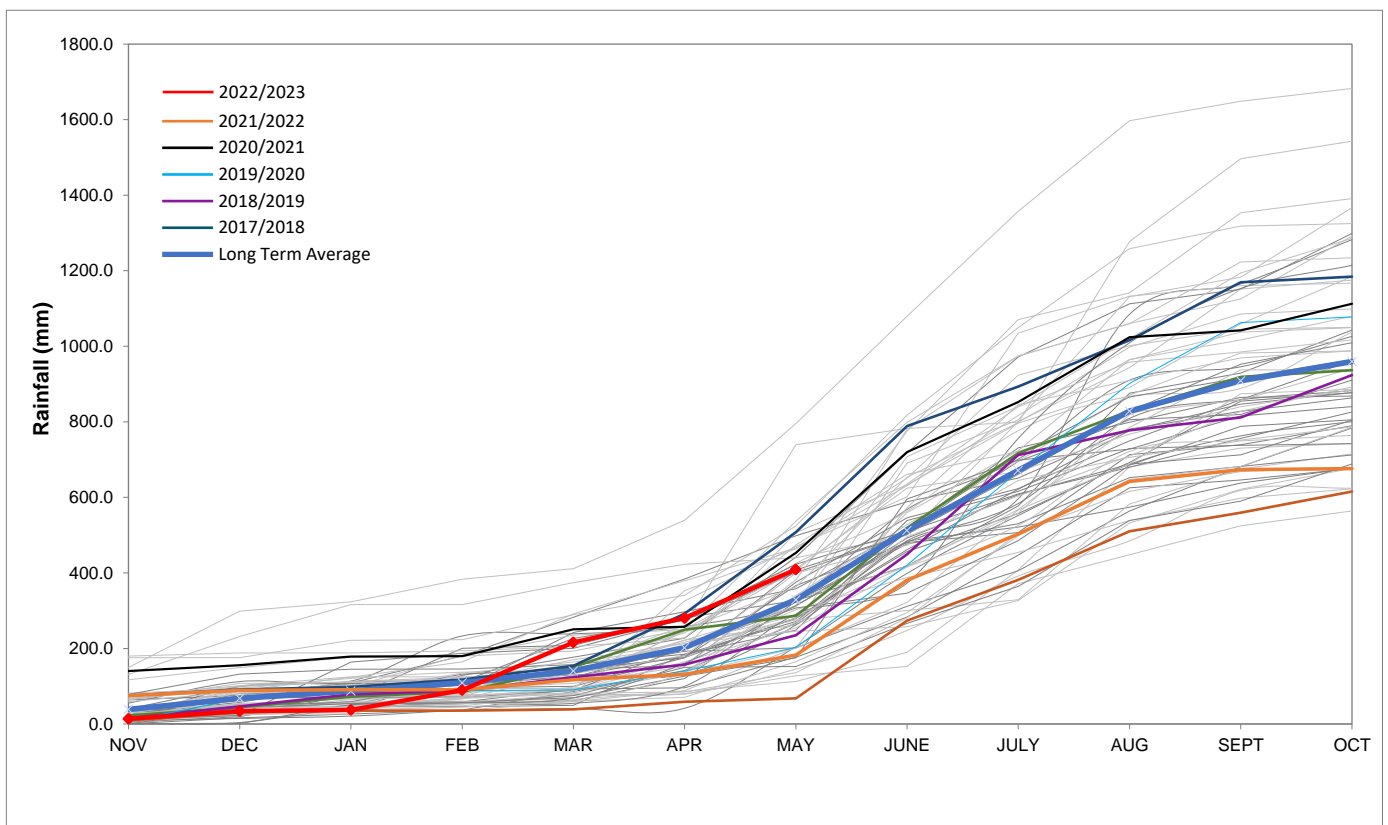
Rainfall Recorded

RAINFALL (mm)	26-Jun	27-Jun	28-Jun	29-Jun	30-Jun	01-Jul	02-Jul	Jul	
								Total*	LT Average
Blackheath Upper	0.0	5.0	4.5	5.0	0.0	0.0	0.0	0.0	78.8
Brooklands	0.0	2.0	5.0	12.0	0.0	0.0	0.0	0.0	132.9
Newlands	0.0	5.0	12.0	13.4	0.0	0.0	0.0	0.0	289.5
Steenbras	0.0	7.2	3.5	5.4	0.0	0.0	0.0	0.0	157.8
Table Mountain (Woodhead)		19.0	9.5	14.5	0.0	0.0	0.0	0.0	244.5
Theewaterskloof	0.0	6.3	0.0	0.0	0.0	0.0	0.0	0.0	74.2
Tygerberg	0.0	2.8	4.6	4.5	0.0	0.5	0.0	0.5	93.3
Voëlvlei	0.0	5.0	15.0	9.0	0.0	0.0	0.0	0.0	101.1
Wemmershoek	0.0	7.9	5.6	17.4	1.8	0.0	0.0	1.8	172.8
Wynberg	0.0	6.0	6.0	12.0	0.0	0.0	0.0	0.0	186.4

Notes: *Total/cummulative rainfall for month indicated above
LT: Long Term

Accumulated Monthly Rainfall at Wemmershoek

Note: Wemmershoek station used due to long record and mountainous location



Drinking Water Quality

SAMPLE PASS RATE

Month	Water Quality Compliance (%)	Target (%)
Oct-21	99.11	98
Nov-21	99.11	98
Dec-21	99.09	98
Jan-22	99.04	98
Feb-22	99.04	98
Mar-22	98.99	98
Apr-22	98.96	98
May-22	98.90	98
Jun-22	98.96	98
Jul-22	99.46	99
Aug-22	99.47	99
Sep-22	99.46	98.50
Oct-22	99.47	98.50
Nov-22	99.45	98.50
Dec-22	99.36	98.50
Jan-23	99.36	98.50
Feb-23	99.35	98.50
Mar-23	99.29	98.50
Apr-23	99.24	98.50
May-23	99.24	98.50

This table shows CCT drinking water quality compliance according to the South African National Standard 241:2015. Compliance, measured against all prescribed chemical and microbiological components, consistently exceeds the very high CCT target of 98.5%. (Overall compliance percentages of continuous sampling and analysis are released on a monthly basis.