



Headline Statistics

<p>WCWSS DAM STORAGE (%)</p> <p>95.5</p>	<p>WEEKLY DAM LEVEL CHANGE (%)</p> <p>3.80</p>	<p>AVERAGE TOTAL DAILY WATER USE (MLD)</p> <p>761</p>
---	---	--

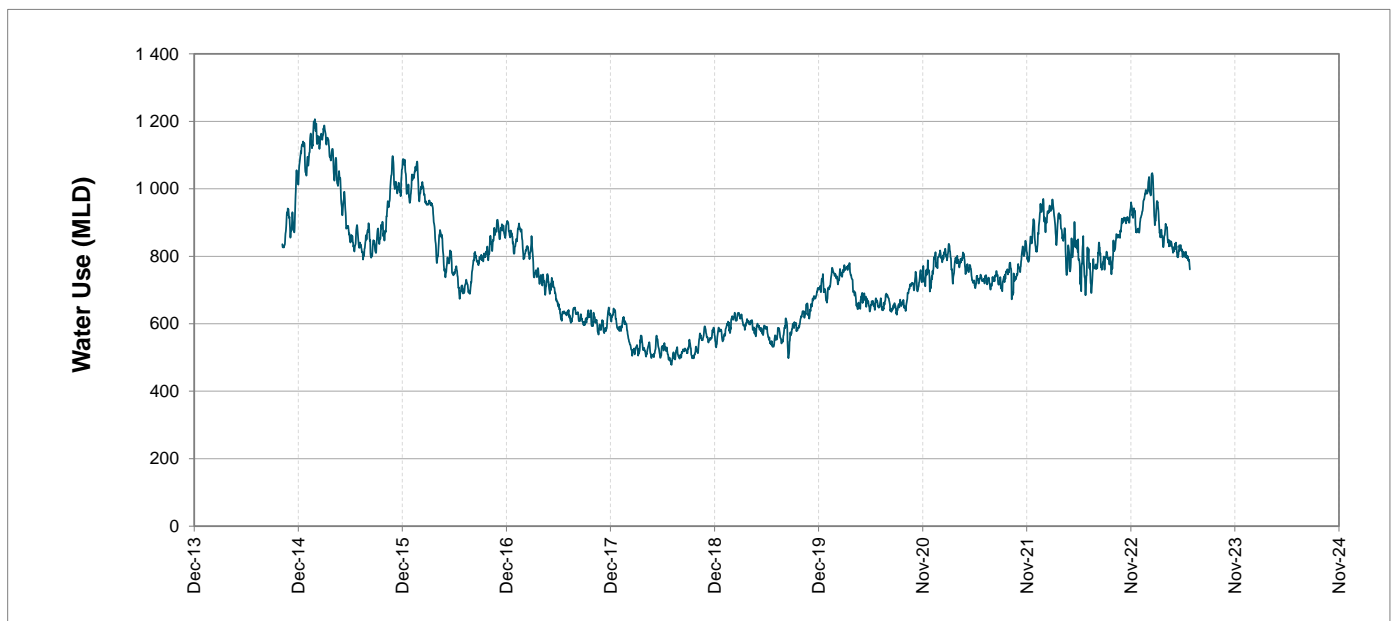
Water Resource Status

WATER RESOURCE STATUS	MEANING OF CURRENT STATUS
Wise Water Use	<p>Although early winter rains have been above average, the City remains concerned about the storage levels in Theewaterskloof and Voelvlei dams, and will continue to monitor these levels. It is important to continue using water wisely.</p> <p>Note: The Water Resource status is updated every three (3) months. It will next be updated in August.</p>

Water Production from Different Sources

<p>MAJOR DAMS (MLD)</p> <p>753</p>	<p>MINOR DAMS (MLD)</p> <p>8</p>	<p>GROUND WATER AND SPRINGS (MLD)</p> <p>0</p>
---	---	---

Overall Water Usage Trend (2010 - Present)



WCWSS means Western Cape Water Supply System

MLD means million litres per day

More information on Water Saving and Restrictions is available on the City of Cape Town's 'ThinkWater' website

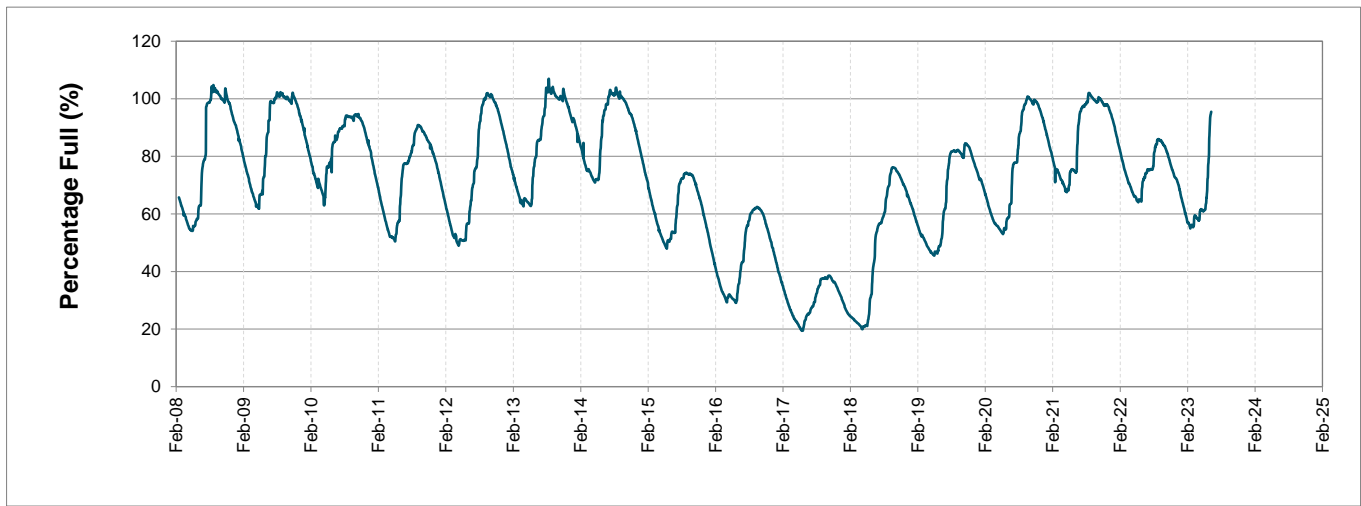
Water Stored in Major Dams (WCWSS)

Overall Percentage Full **95.5%**

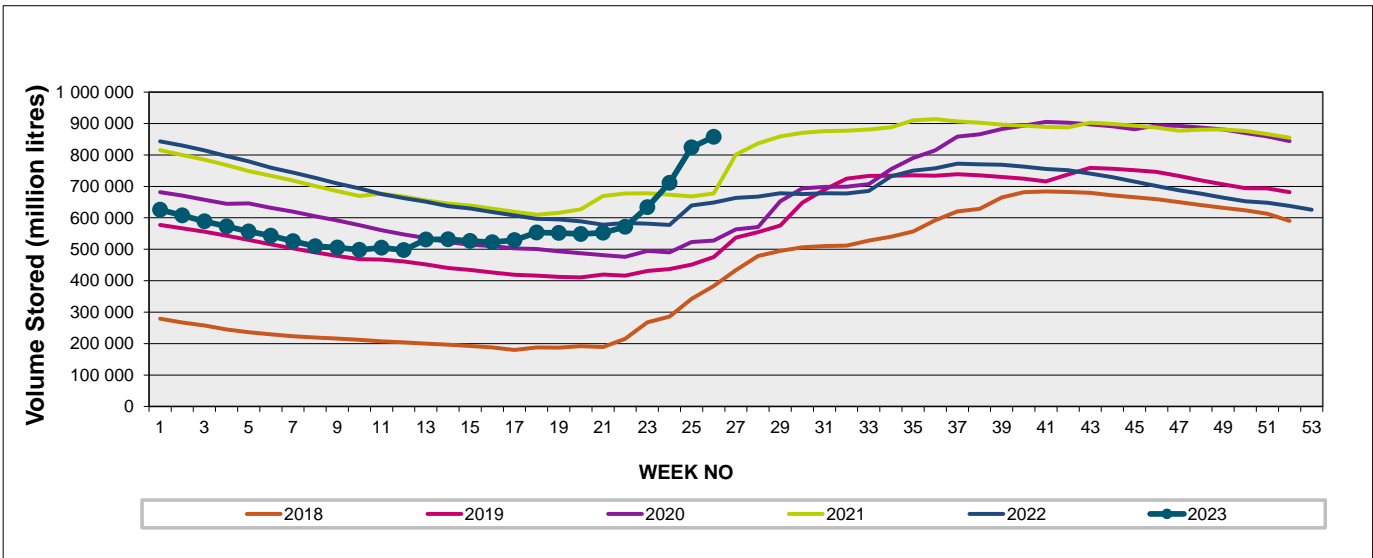
Weekly Change **3.8%**

MAJOR DAMS (WCWSS)	STORAGE						
	CAPACITY	%	%	%	%	%	%
	MI	26 June 2023	Previous week	2022	2021	2020	2019
BERG RIVER	130 010	100.7	103.4	79.5	89.3	75.1	76.0
STEENBRAS LOWER	33 517	101.0	102.5	80.3	60.5	50.2	40.6
STEENBRAS UPPER	31 767	100.3	100.9	89.1	60.8	100.2	67.0
THEEWATERSKLOOF	480 188	102.0	96.4	74.2	79.5	55.8	43.2
VOËLVLEI	164 095	68.6	62.3	60.8	60.5	54.6	58.1
WEMMERSHOEK	58 644	99.9	98.7	56.6	61.6	43.7	40.5
TOTAL STORED	898 221	857 677	824 038	647 802	672 629	529 279	460 187
% STORAGE		95.5%	91.7%	72.1%	74.9%	58.9%	51.2%

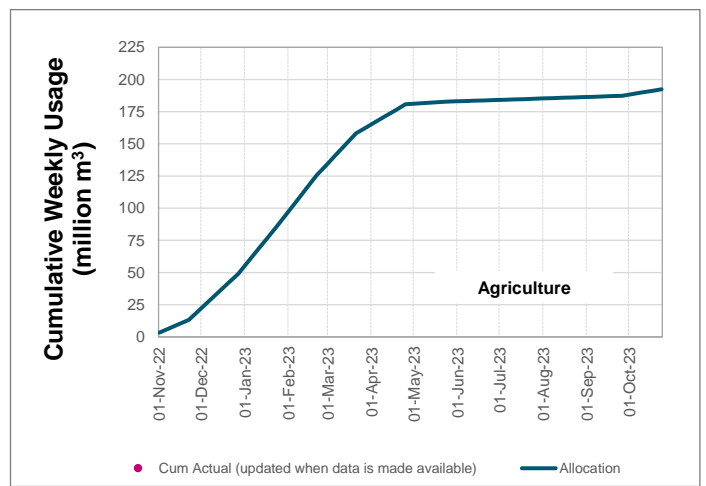
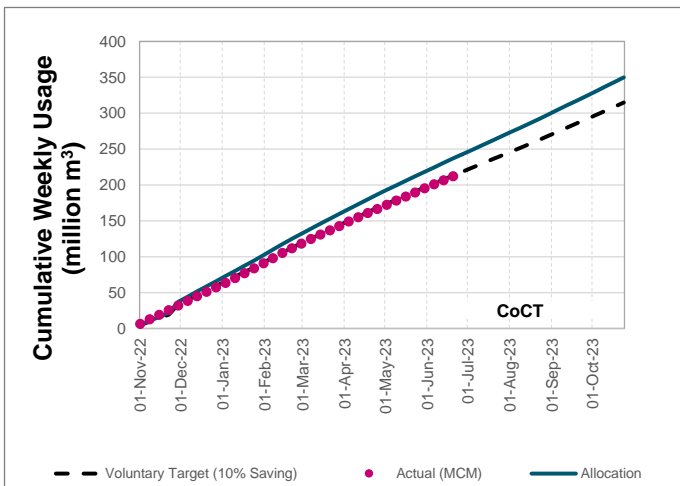
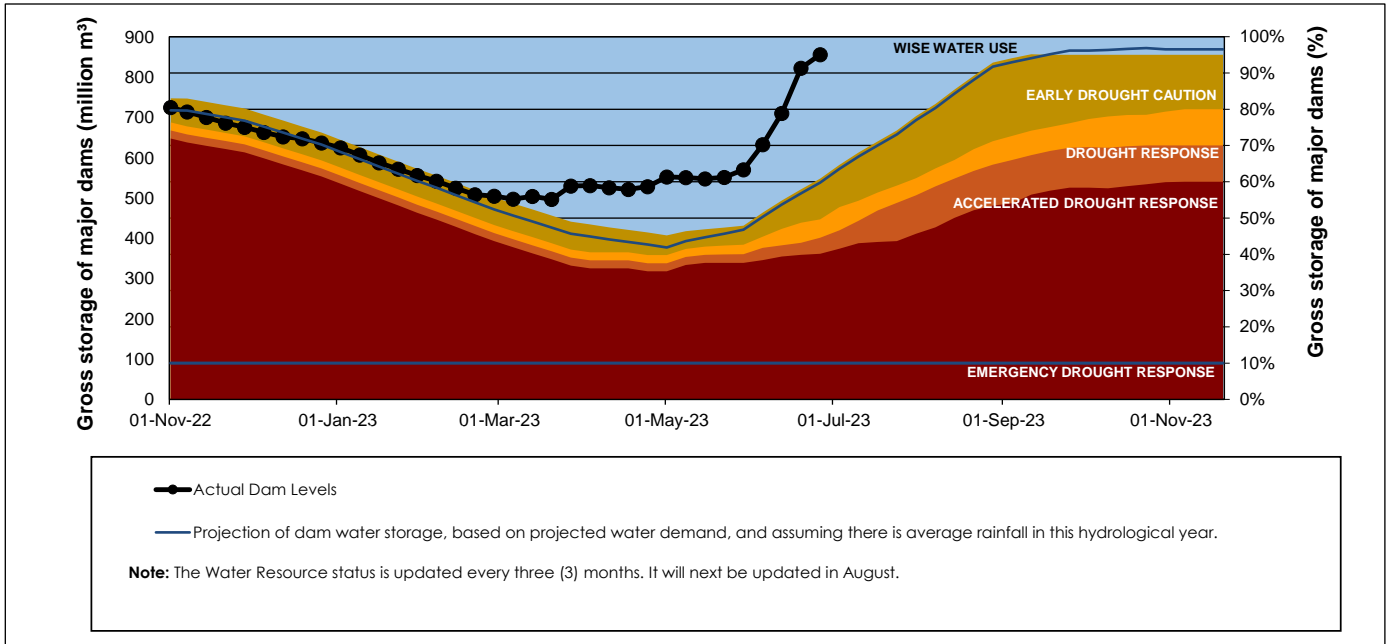
WCWSS Storage Record (2008 - Present)



WCWSS Comparative Storage Graph



Projected WCWSS Dam Storage Levels



Water Stored in Minor Dams

Overall Percentage Full **No Data**

Weekly Change **#VALUE!**

MINOR DAMS	STORAGE						
	CAPACITY	%	%	%	%	%	%
	MI	26 June 2023	Previous week	2022	2021	2020	2019
ALEXANDRA (Table Mountain)	126	No Data	99.3	75.1	14.3	49.8	11.7
DE VILLIERS (Table Mountain)	243	No Data	101.6	99.1	66.8	100.0	77.2
HELY-HUTCHINSON (Table Mount)	925	No Data	104.2	99.7	64.4	69.1	60.5
KLEINPLAATS (Simon's Town)	1 368	63.0	56.4	43.0	46.1	36.5	40.7
LAND-EN-ZEEZICHT (Helderberg)	451	99.4	99.4	80.4	67.9	68.8	90.0
LEWIS GAY (Simon's Town)	182	100.9	100.9	67.3	58.4	42.0	0.0
VICTORIA (Table Mountain)	128	No Data	104.6	100.8	25.1	100.4	32.8
WOODHEAD (Table Mountain)	954	No Data	100.2	66.4	71.4	99.8	70.6
Total Stored	4 377	No Data	3807.9	3078.8	2509.8	2900.5	2433.8
Percentages stored		No Data	87.0	70.3	57.3	66.3	55.6

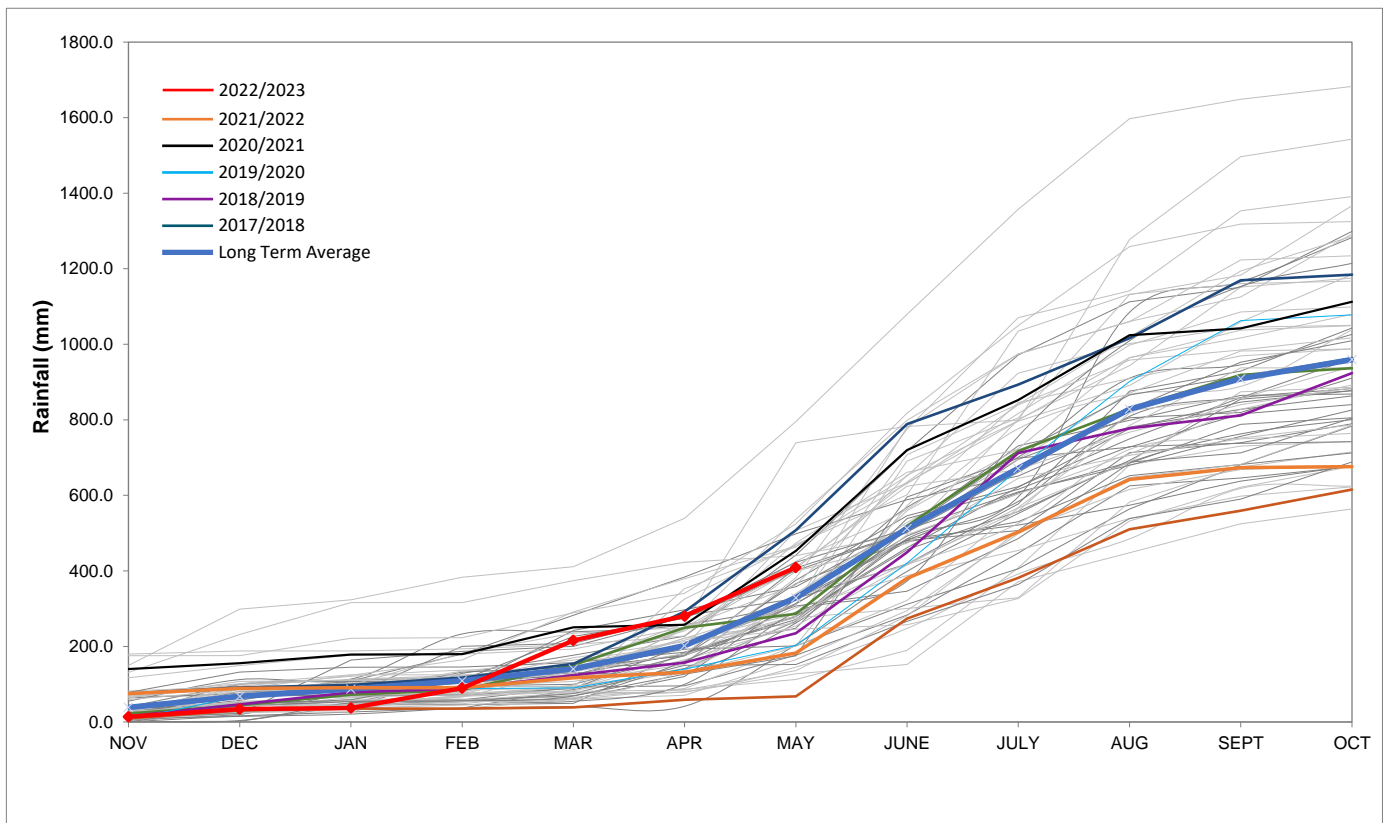
Rainfall Recorded

RAINFALL (mm)	19-Jun	20-Jun	21-Jun	22-Jun	23-Jun	24-Jun	25-Jun	Jun	
								Total*	LT Average
Blackheath Upper	6.0	2.0	0.0	0.0	2.0	0.0	0.0	129.7	73.3
Brooklands	3.0	1.0	4.0	0.0	2.0	2.0	0.0	219.0	138.7
Newlands	10.5	0.5	0.9	0.9	21.0	0.9	0.0	568.1	291.0
Steenbras	13.0	0.0	4.0	0.0	0.0	0.0	0.0	167.4	156.0
Table Mountain (Woodhead)	22.0	12.0	3.5	0.0			No Data	384.5	240.5
Theewaterskloof	8.0	0.0	2.0	0.0	0.0	0.0	4.1	115.3	72.3
Tygerberg	6.3	0.0	0.0	0.0	2.0	0.0	0.0	160.1	93.8
Voëlveli	10.0	0.0	0.0	0.0	0.0	0.0	0.0	200.2	115.6
Wemmershoek	3.8	0.0	0.0	0.0	0.0	0.0	0.0	450.4	189.6
Wynberg	7.3	0.0	2.0	0.0	3.2	0.0	0.0	440.0	175.2

Notes: *Total/cummulative rainfall for month indicated above
LT: Long Term

Accumulated Monthly Rainfall at Wemmershoek

Note: Wemmershoek station used due to long record and mountainous location



Drinking Water Quality

SAMPLE PASS RATE

Month	Water Quality Compliance (%)	Target (%)
Oct-21	99.11	98
Nov-21	99.11	98
Dec-21	99.09	98
Jan-22	99.04	98
Feb-22	99.04	98
Mar-22	98.99	98
Apr-22	98.96	98
May-22	98.90	98
Jun-22	98.96	98
Jul-22	99.46	99
Aug-22	99.47	99
Sep-22	99.46	98.50
Oct-22	99.47	98.50
Nov-22	99.45	98.50
Dec-22	99.36	98.50
Jan-23	99.36	98.50
Feb-23	99.35	98.50
Mar-23	99.29	98.50
Apr-23	99.24	98.50
May-23	99.24	98.50

This table shows CCT drinking water quality compliance according to the South African National Standard 241:2015. Compliance, measured against all prescribed chemical and microbiological components, consistently exceeds the very high CCT target of 98.5%. (Overall compliance percentages of continuous sampling and analysis are released on a monthly basis.)