



Headline Statistics

WCWSS DAM STORAGE (%)

**91.7**

WEEKLY DAM LEVEL CHANGE (%)

**12.50**

AVERAGE TOTAL DAILY WATER USE (MLD)

**800**

Water Resource Status

WATER RESOURCE STATUS	MEANING OF CURRENT STATUS
Wise Water Use	<p>Although early winter rains have been above average, the City remains concerned about the storage levels in Theewaterskloof and Voelvlei dams, and will continue to monitor these levels. It is important to continue using water wisely.</p> <p><b>Note:</b> The Water Resource status is updated every three (3) months. It will next be updated in August.</p>

Water Production from Different Sources

MAJOR DAMS (MLD)

**786**

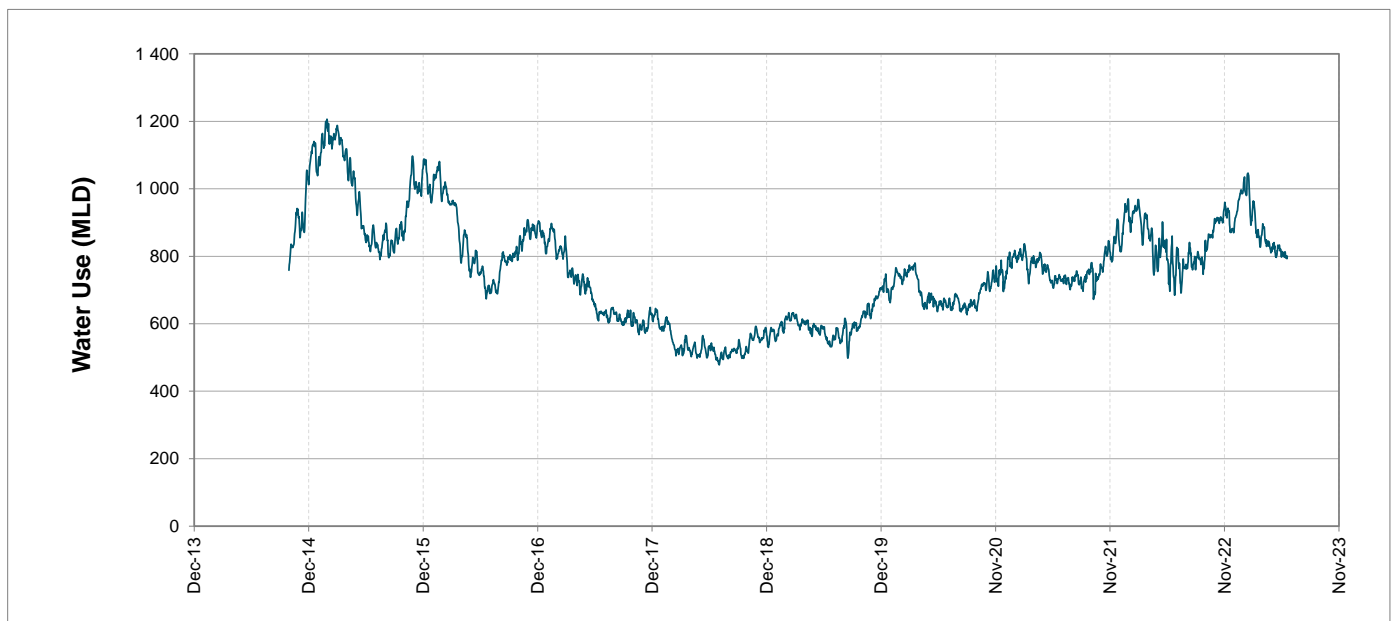
MINOR DAMS (MLD)

**14**

GROUND WATER AND SPRINGS (MLD)

**0**

Overall Water Usage Trend (2010 - Present)



WCWSS means Western Cape Water Supply System

MLD means million litres per day

More information on Water Saving and Restrictions is available on the City of Cape Town's 'ThinkWater' website

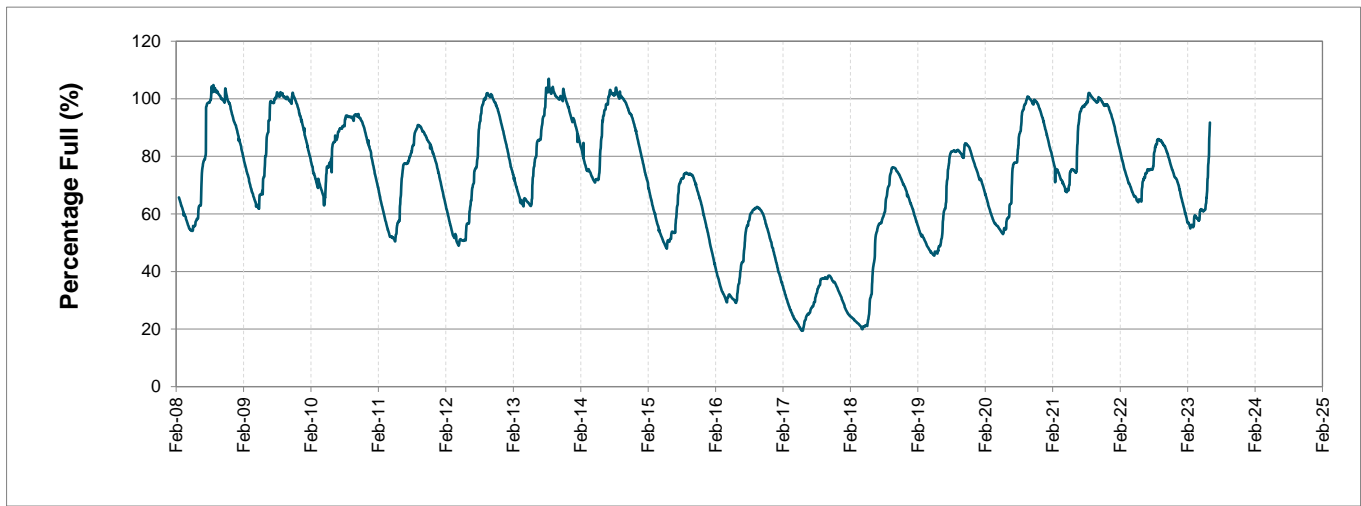
# Water Stored in Major Dams (WCWSS)

Overall Percentage Full **91.7%**

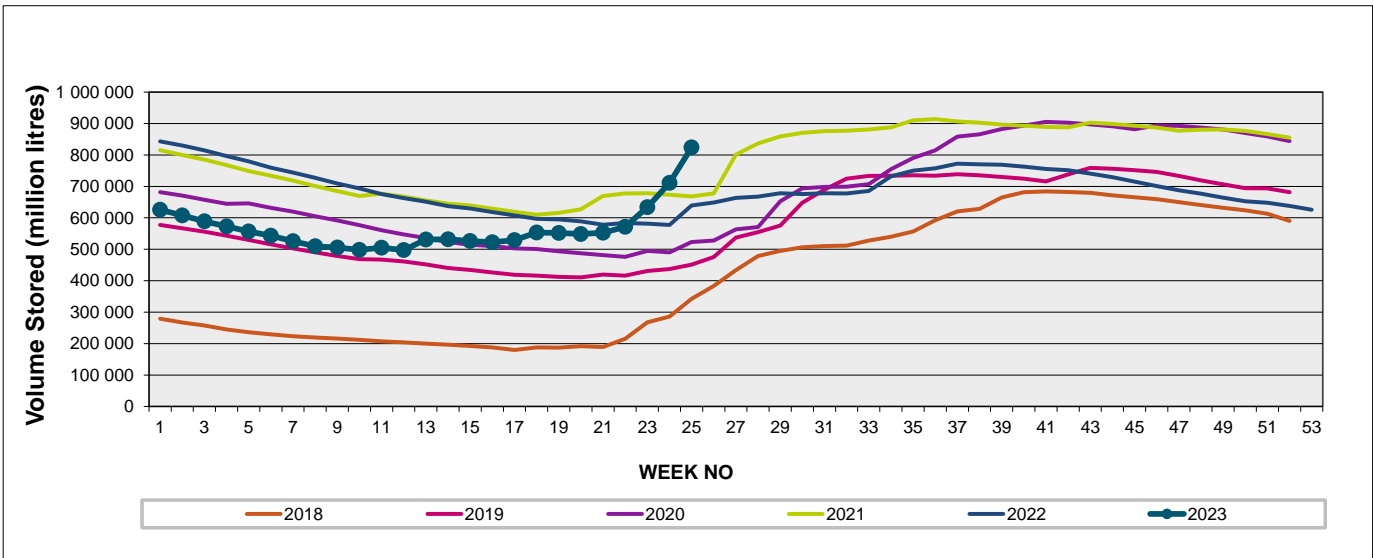
Weekly Change **12.5%**

MAJOR DAMS (WCWSS)	STORAGE						
	CAPACITY	%	%	%	%	%	%
	MI	19 June 2023	Previous week	2022	2021	2020	2019
BERG RIVER	130 010	103.4	102.6	81.4	86.6	74.0	73.5
STEENBRAS LOWER	33 517	102.5	94.9	77.4	59.1	50.3	39.3
STEENBRAS UPPER	31 767	100.9	102.2	92.6	60.1	99.5	68.1
THEEWATERSKLOOF	480 188	96.4	77.0	72.5	80.0	55.5	40.8
VOËLVLEI	164 095	62.3	53.0	57.6	60.8	54.1	55.2
WEMMERSHOEK	58 644	98.7	97.1	54.8	60.0	43.5	40.2
<b>TOTAL STORED</b>	<b>898 221</b>	<b>824 038</b>	<b>711 241</b>	<b>635 968</b>	<b>670 683</b>	<b>525 288</b>	<b>440 406</b>
<b>% STORAGE</b>		<b>91.7%</b>	<b>79.2%</b>	<b>70.8%</b>	<b>74.7%</b>	<b>58.5%</b>	<b>49.0%</b>

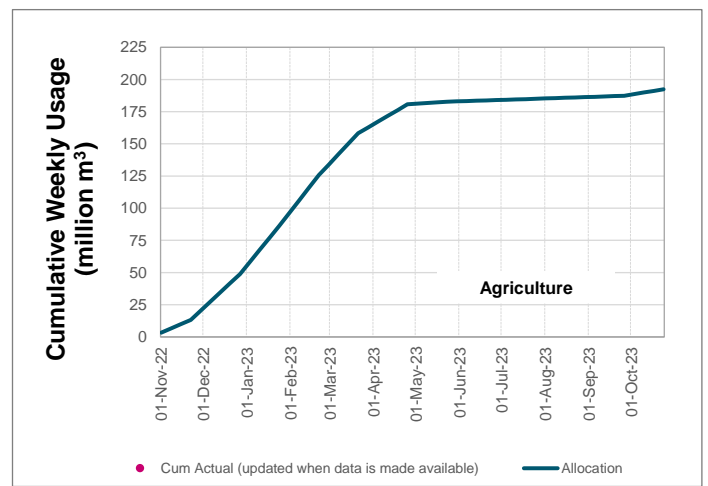
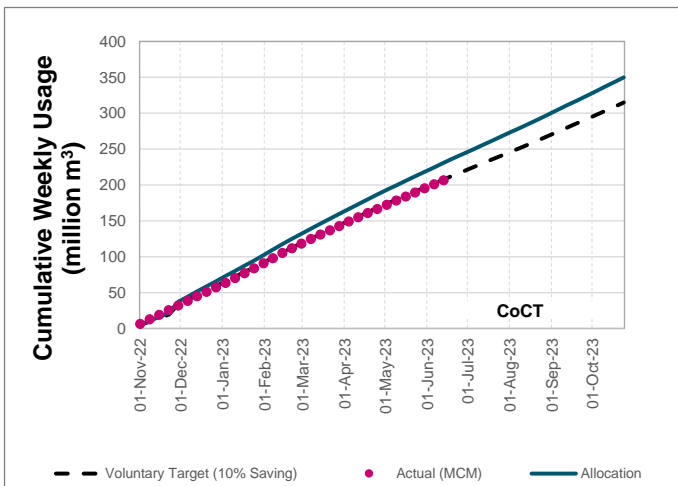
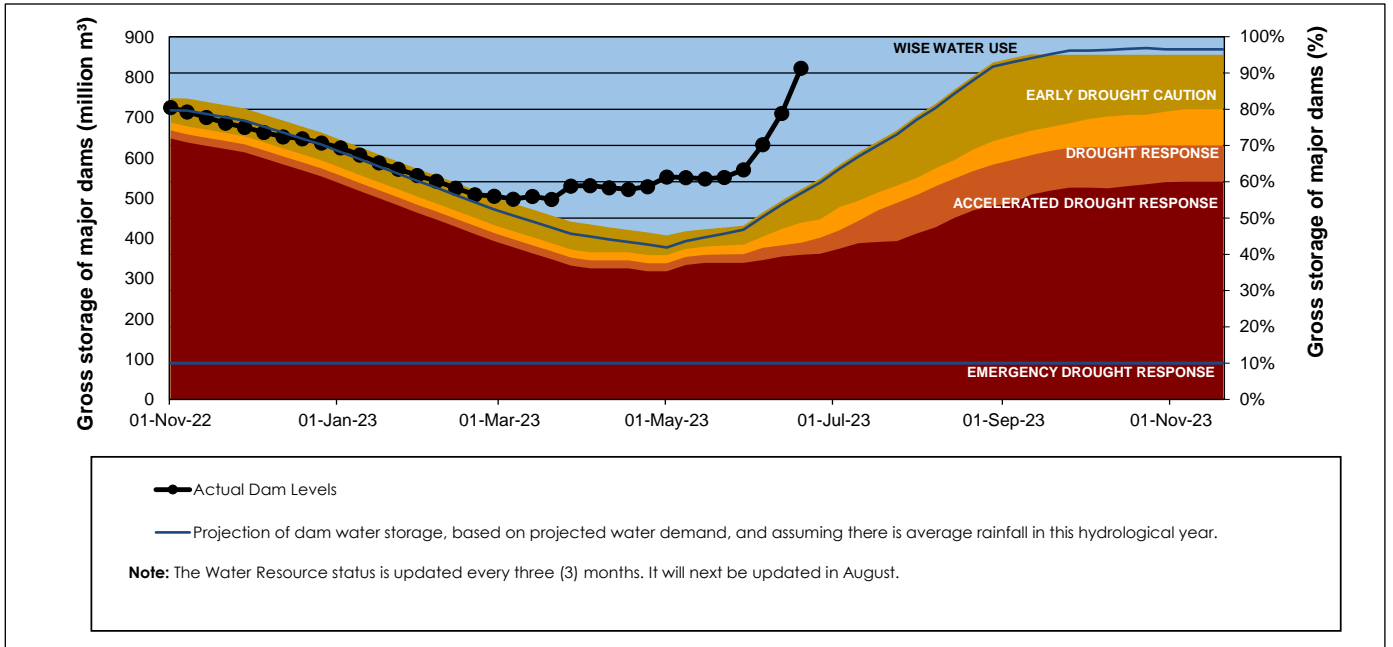
## WCWSS Storage Record (2008 - Present)



## WCWSS Comparative Storage Graph



# Projected WCWSS Dam Storage Levels



## Water Stored in Minor Dams

Overall Percentage Full **87.1**

Weekly Change **5.59**

MINOR DAMS	STORAGE						
	CAPACITY	%	%	%	%	%	%
	MI	19 June 2023	Previous week	2022	2021	2020	2019
ALEXANDRA (Table Mountain)	126	99.3	98.0	71.9	11.7	47.3	8.3
DE VILLIERS (Table Mountain)	243	101.6	100.3	96.2	64.7	100.3	74.0
HELY-HUTCHINSON (Table Mount)	925	103.9	101.2	102.5	51.1	63.2	45.8
KLEINPLAATS (Simon's Town)	1 368	56.4	40.0	35.4	45.5	36.2	42.5
LAND-EN-ZEEZICHT (Helderberg)	451	99.4	99.4	80.7	65.0	66.6	92.7
LEWIS GAY (Simon's Town)	182	100.9	100.9	54.4	63.3	36.1	0.0
VICTORIA (Table Mountain)	128	104.6	101.5	92.7	21.0	100.4	25.1
WOODHEAD (Table Mountain)	954	101.0	101.3	70.9	68.8	99.8	66.7
<b>Total Stored</b>	<b>4 377</b>	<b>3812.7</b>	<b>3568.0</b>	<b>3007.4</b>	<b>2334.6</b>	<b>2819.9</b>	<b>2274.7</b>
<b>Percentages stored</b>		<b>87.1</b>	<b>81.5</b>	<b>68.7</b>	<b>53.3</b>	<b>64.4</b>	<b>52.0</b>

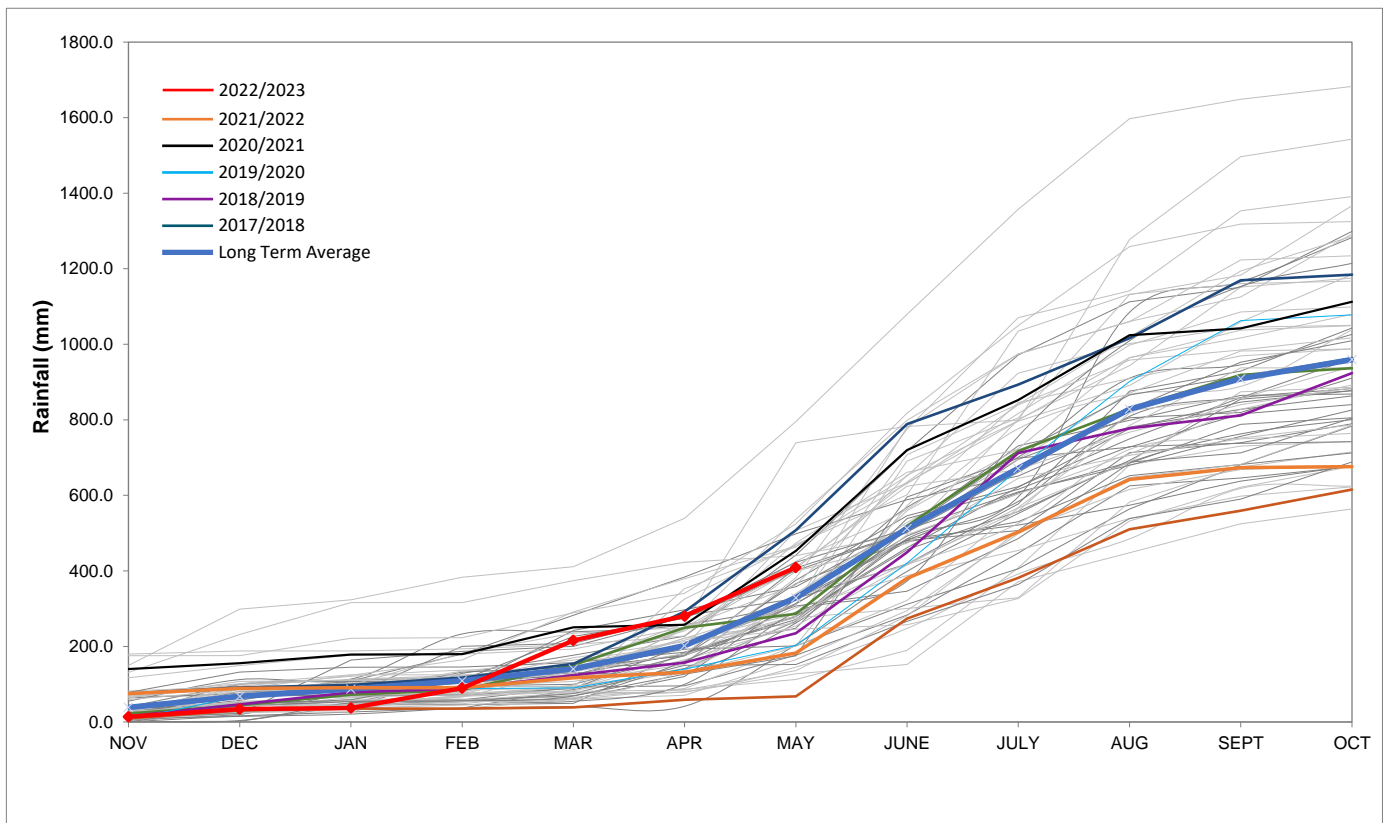
# Rainfall Recorded

RAINFALL (mm)	12-Jun	13-Jun	14-Jun	15-Jun	16-Jun	17-Jun	18-Jun	Jun	
								Total*	LT Average
Blackheath Upper	1.0	18.0	18.2	2.0	2.0	9.0	10.5	119.7	73.3
Brooklands	0.0	30.0	30.0	3.0	22.0	1.0	10.0	207.0	138.7
Newlands	6.0	100.0	50.0	16.0	80.0	5.0	40.0	513.4	291.0
Steenbras	0.5	39.0	11.5	5.5	13.8	3.8	16.5	150.4	156.0
Table Mountain (Woodhead)	15.5	69.0	48.0	0.5	41.0	4.0	45.0	365.0	240.5
Theewaterskloof	0.0	15.0	13.8	5.7	3.0	5.6	9.0	101.2	72.3
Tygerberg	3.8	19.1	30.1	3.5	1.5	13.3	7.5	151.8	93.8
Voëlvei	2.0	20.0	30.0	13.0	0.0	39.0	6.5	190.2	115.6
Wemmershoek	9.8	83.2	42.3	9.7	29.0	28.8	46.7	446.6	189.6
Wynberg	6.5	76.0	35.0	5.0	27.5	19.3	27.2	427.5	175.2

Notes: \*Total/cummulative rainfall for month indicated above  
LT: Long Term

# Accumulated Monthly Rainfall at Wemmershoek

Note: Wemmershoek station used due to long record and mountainous location



## Drinking Water Quality

### SAMPLE PASS RATE

Month	Water Quality Compliance (%)	Target (%)
Oct-21	99.11	98
Nov-21	99.11	98
Dec-21	99.09	98
Jan-22	99.04	98
Feb-22	99.04	98
Mar-22	98.99	98
Apr-22	98.96	98
May-22	98.90	98
Jun-22	98.96	98
Jul-22	99.46	99
Aug-22	99.47	99
Sep-22	99.46	98.50
Oct-22	99.47	98.50
Nov-22	99.45	98.50
Dec-22	99.36	98.50
Jan-23	99.36	98.50
Feb-23	99.35	98.50
Mar-23	99.29	98.50
Apr-23	99.24	98.50

This table shows CCT drinking water quality compliance according to the South African National Standard 241:2015. Compliance, measured against all prescribed chemical and microbiological components, consistently exceeds the very high CCT target of 98.5%. (Overall compliance percentages of continuous sampling and analysis are released on a monthly basis.