



Headline Statistics

WCWSS DAM STORAGE (%)

79.2

WEEKLY DAM LEVEL CHANGE (%)

8.70

AVERAGE TOTAL DAILY WATER USE (MLD)

813

Water Resource Status

WATER RESOURCE STATUS	MEANING OF CURRENT STATUS
Wise Water Use	<p>Although early winter rains have been above average, the City remains concerned about the storage levels in Theewaterskloof and Voelvlei dams, and will continue to monitor these levels. It is important to continue using water wisely.</p> <p>Note: The Water Resource status is updated every three (3) months. It will next be updated in August.</p>

Water Production from Different Sources

MAJOR DAMS (MLD)

796

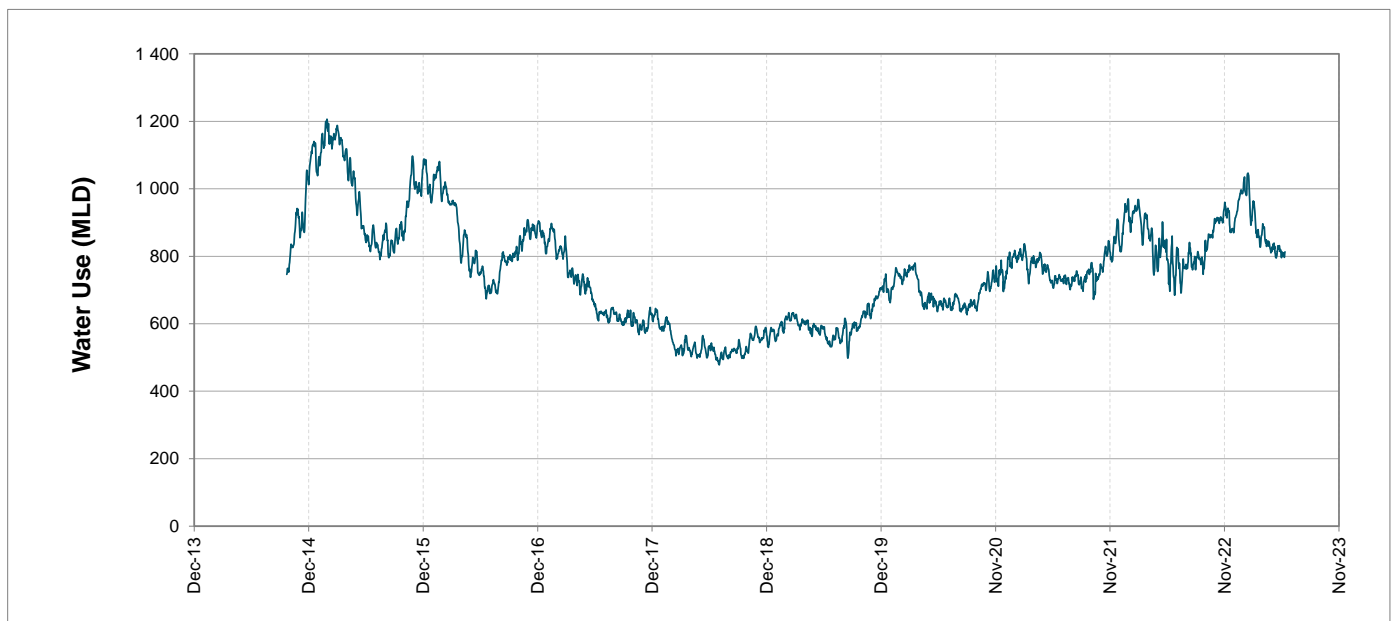
MINOR DAMS (MLD)

17

GROUND WATER AND SPRINGS (MLD)

0

Overall Water Usage Trend (2010 - Present)



WCWSS means Western Cape Water Supply System

MLD means million litres per day

More information on Water Saving and Restrictions is available on the City of Cape Town's 'ThinkWater' website

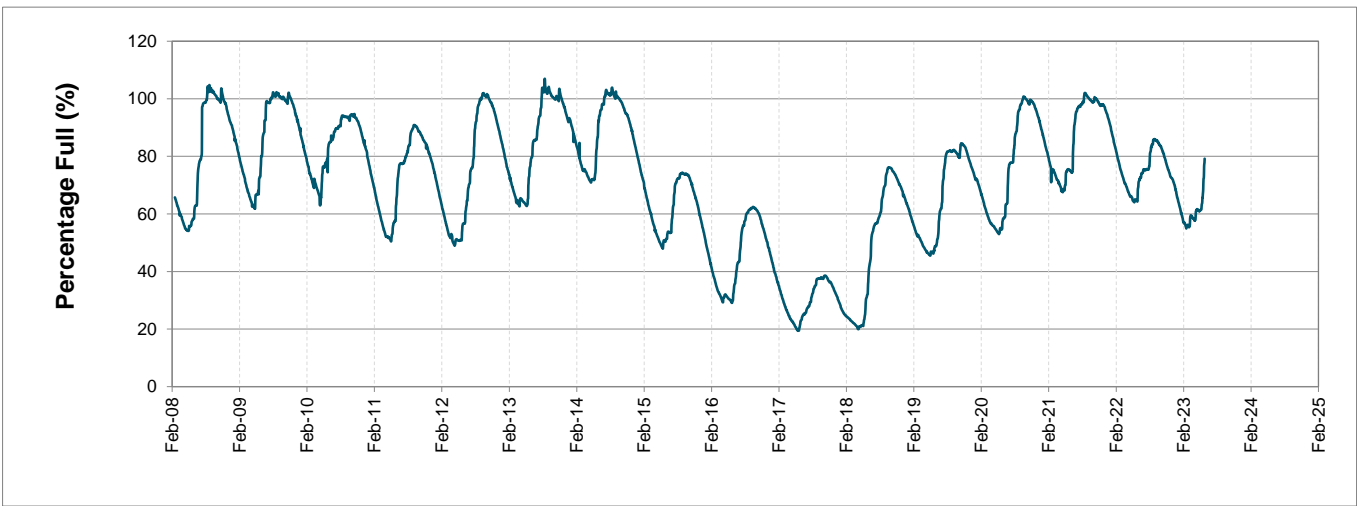
Water Stored in Major Dams (WCWSS)

Overall Percentage Full **79.2%**

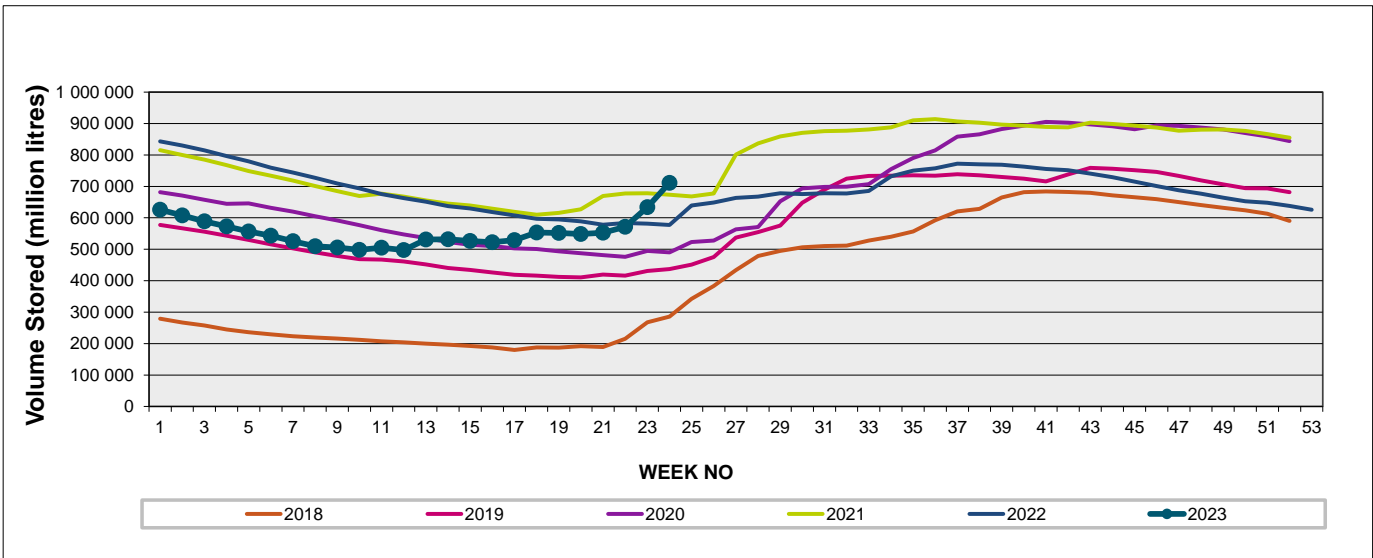
Weekly Change **8.7%**

MAJOR DAMS (WCWSS)	STORAGE						
	CAPACITY	%	%	%	%	%	%
	MI	12 June 2023	Previous week	2022	2021	2020	2019
BERG RIVER	130 010	102.6	101.9	69.8	86.6	72.5	72.9
STEENBRAS LOWER	33 517	94.9	84.4	59.6	60.9	49.2	40.1
STEENBRAS UPPER	31 767	102.2	102.0	83.2	57.3	99.4	66.7
THEEWATERSKLOOF	480 188	77.0	66.5	66.9	80.7	54.5	39.8
VOËLVLEI	164 095	53.0	43.9	55.9	61.3	51.4	55.2
WEMMERSHOEK	58 644	97.1	83.7	47.4	61.2	42.6	40.9
TOTAL STORED	898 221	711 241	633 589	577 993	674 950	513 338	435 191
% STORAGE		79.2%	70.5%	64.3%	75.1%	57.2%	48.5%

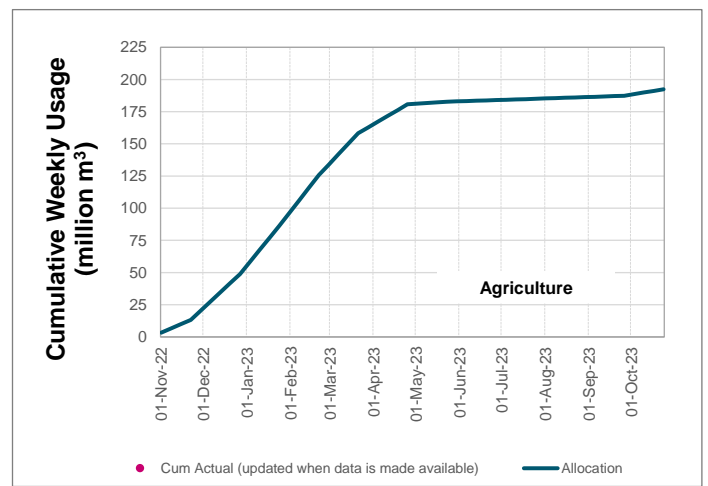
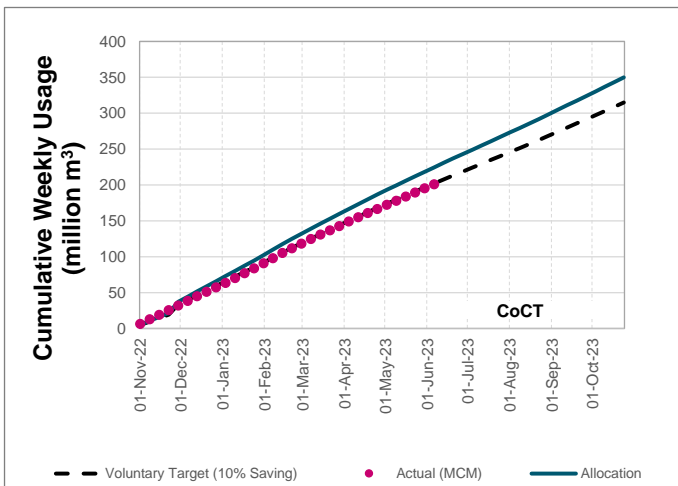
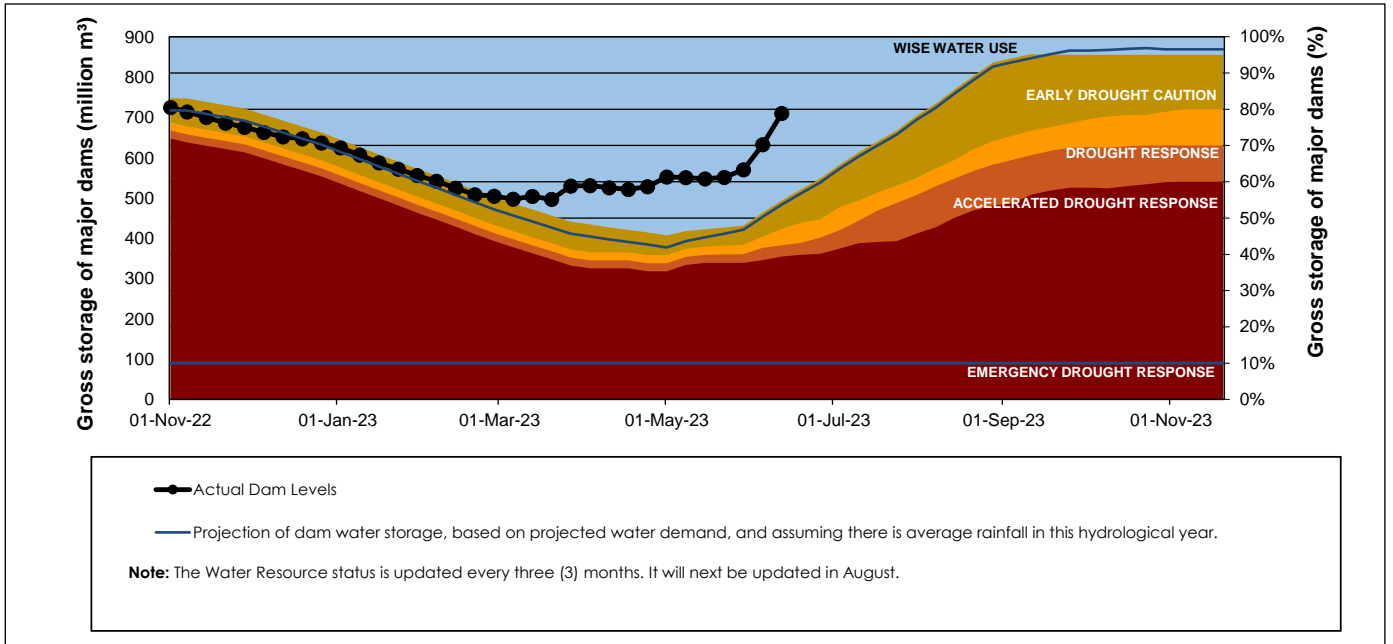
WCWSS Storage Record (2008 - Present)



WCWSS Comparative Storage Graph



Projected WCWSS Dam Storage Levels



Water Stored in Minor Dams

Overall Percentage Full **81.5**

Weekly Change **4.52**

MINOR DAMS	STORAGE						
	CAPACITY	%	%	%	%	%	%
	MI	12 June 2023	Previous week	2022	2021	2020	2019
ALEXANDRA (Table Mountain)	126	98.0	100.0	59.8	11.5	41.9	6.3
DE VILLIERS (Table Mountain)	243	100.3	100.9	76.6	64.6	99.8	72.8
HELY-HUTCHINSON (Table Mount)	925	101.2	100.5	58.8	50.5	45.0	42.6
KLEINPLAATS (Simon's Town)	1 368	40.0	28.5	36.5	46.1	35.6	43.6
LAND-EN-ZEEZICHT (Helderberg)	451	99.4	90.5	72.3	64.0	64.9	94.0
LEWIS GAY (Simon's Town)	182	100.9	100.9	13.9	62.6	26.6	0.0
VICTORIA (Table Mountain)	128	101.5	101.2	67.0	22.1	92.7	21.0
WOODHEAD (Table Mountain)	954	101.3	100.9	80.4	68.1	99.8	66.1
Total Stored	4 377	3568.0	3370.0	2504.7	2326.1	2601.4	2248.7
Percentages stored		81.5	77.0	57.2	53.1	59.4	51.4

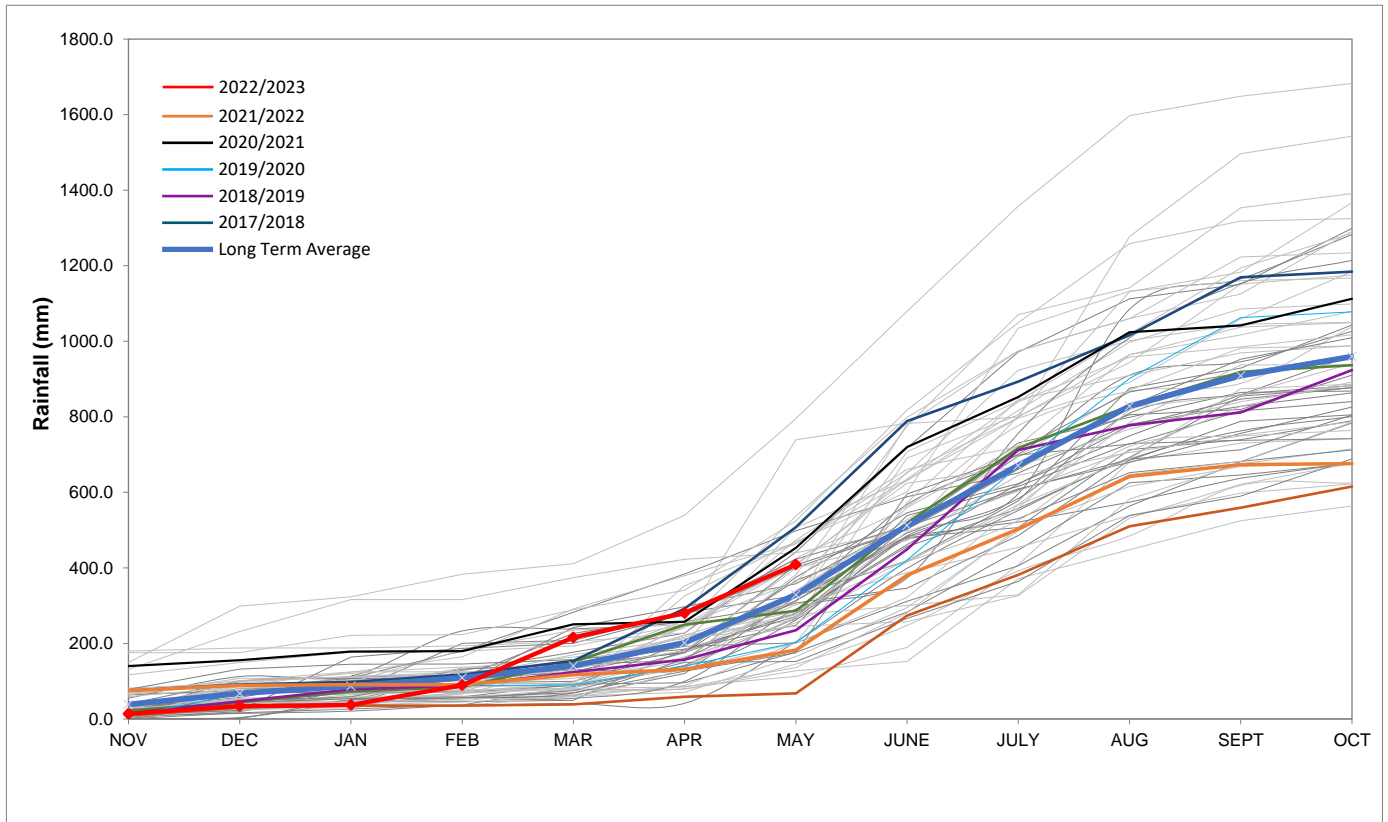
Rainfall Recorded

RAINFALL (mm)	05-Jun	06-Jun	07-Jun	08-Jun	09-Jun	10-Jun	11-Jun	Jun	
								Total*	LT Average
Blackheath Upper	0.0	0.0	4.0	18.0	0.0	0.0	15.0	59.0	73.3
Brooklands	0.0	0.0	19.0	12.0	1.0	0.0	18.0	111.0	138.7
Newlands	0.0	0.0	55.0	72.0	0.0	0.0	41.0	216.4	291.0
Steenbras	0.0	0.0	4.0	15.0	0.2	0.0	11.0	59.8	156.0
Table Mountain (Woodhead)	0.0	0.0	54.0	18.0	1.0	2.0	26.0	142.0	240.5
Theewaterskloof	0.0	0.0	5.0	18.6	0.0	0.0	8.9	49.1	72.3
Tygerberg	0.0	0.0	10.6	11.4	1.0	0.0	25.0	73.0	93.8
Voëlvlei	0.0	0.0	8.0	19.0	0.5	0.0	5.0	79.7	115.6
Wemmershoek	0.0	0.0	30.5	29.2	1.5	0.0	28.4	197.1	189.6
Wynberg	0.0	0.0	85.0	33.0	0.0	0.0	25.0	231.0	175.2

Notes: *Total/cummulative rainfall for month indicated above
LT: Long Term

Accumulated Monthly Rainfall at Wemmershoek

Note: Wemmershoek station used due to long record and mountainous location



Drinking Water Quality

SAMPLE PASS RATE

Month	Water Quality Compliance (%)	Target (%)
Oct-21	99.11	98
Nov-21	99.11	98
Dec-21	99.09	98
Jan-22	99.04	98
Feb-22	99.04	98
Mar-22	98.99	98
Apr-22	98.96	98
May-22	98.90	98
Jun-22	98.96	98
Jul-22	99.46	99
Aug-22	99.47	99
Sep-22	99.46	98.50
Oct-22	99.47	98.50
Nov-22	99.45	98.50
Dec-22	99.36	98.50
Jan-23	99.36	98.50
Feb-23	99.35	98.50
Mar-23	99.29	98.50
Apr-23	99.24	98.50

This table shows CCT drinking water quality compliance according to the South African National Standard 241:2015. Compliance, measured against all prescribed chemical and microbiological components, consistently exceeds the very high CCT target of 98.5%. (Overall compliance percentages of continuous sampling and analysis are released on a monthly basis.