



Headline Statistics

WCWSS DAM STORAGE (%)

61.5

WEEKLY DAM LEVEL CHANGE (%)

0.40

AVERAGE TOTAL DAILY WATER USE (MLD)

812

Water Resource Status

WATER RESOURCE STATUS	MEANING OF CURRENT STATUS
Early Drought Caution	<p>There is a strong indication of a possible, but not confirmed, drought cycle developing or continuing from the record low rainfall levels between 2015-2017. It is important to continue using water wisely. There is no immediate cause for concern about water security in Cape Town. However, it is the responsible step to take now for Cape Town to collectively aim not to exceed a target of 850 millions of litres per day (MLD) to lower the risk of restrictions at a later stage.</p> <p>Note: The Water Resource status is updated every three (3) months. It will next be updated in May. This year, heavy early rainfall has resulted in the dam increasing early in the year. However, the long-term rainfall outlook remains uncertain and is projected to be below average for the rest of winter.</p>

Water Production from Different Sources

MAJOR DAMS (MLD)

809

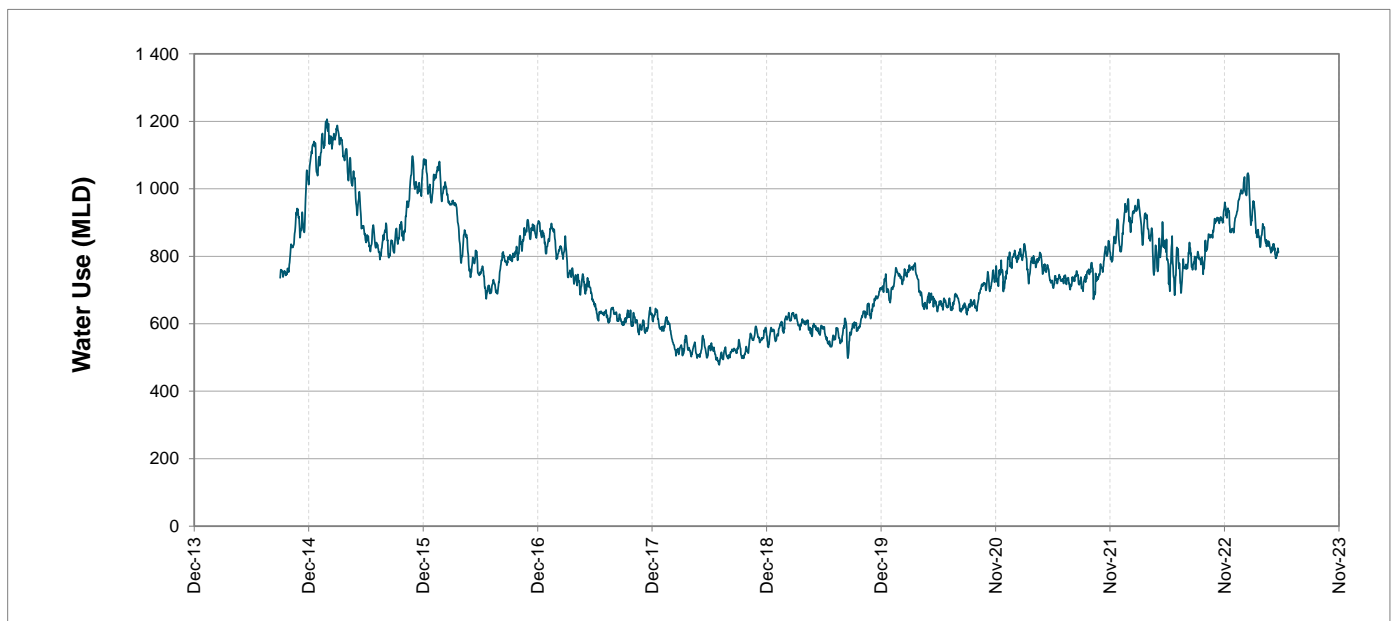
MINOR DAMS (MLD)

2

GROUND WATER AND SPRINGS (MLD)

1

Overall Water Usage Trend (2010 - Present)



WCWSS means Western Cape Water Supply System

MLD means million litres per day

More information on Water Saving and Restrictions is available on the City of Cape Town's 'ThinkWater' website

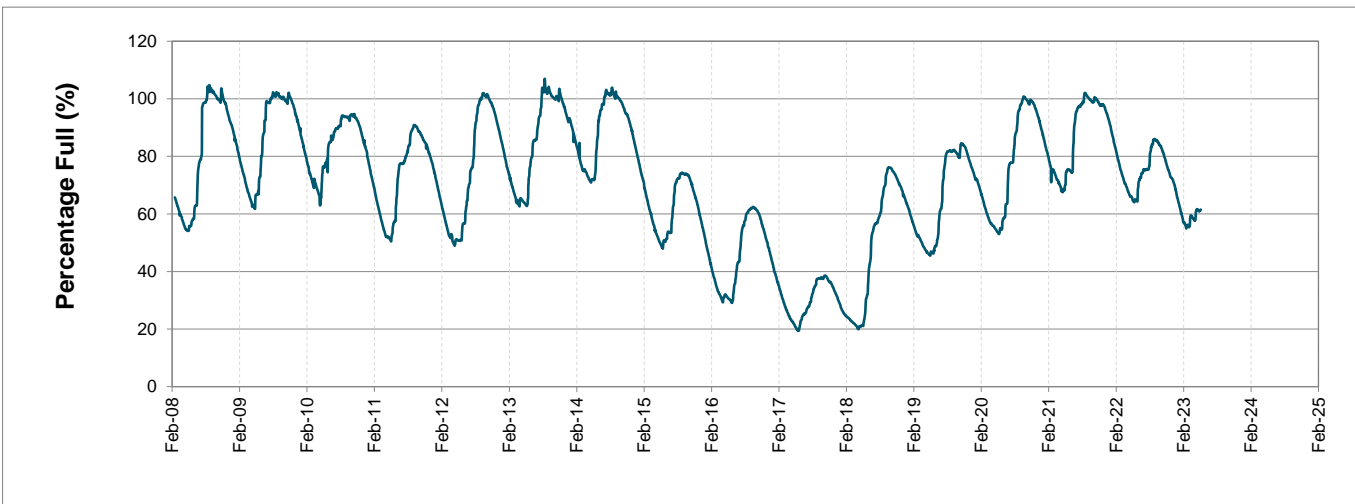
Water Stored in Major Dams (WCWSS)

Overall Percentage Full **61.5%**

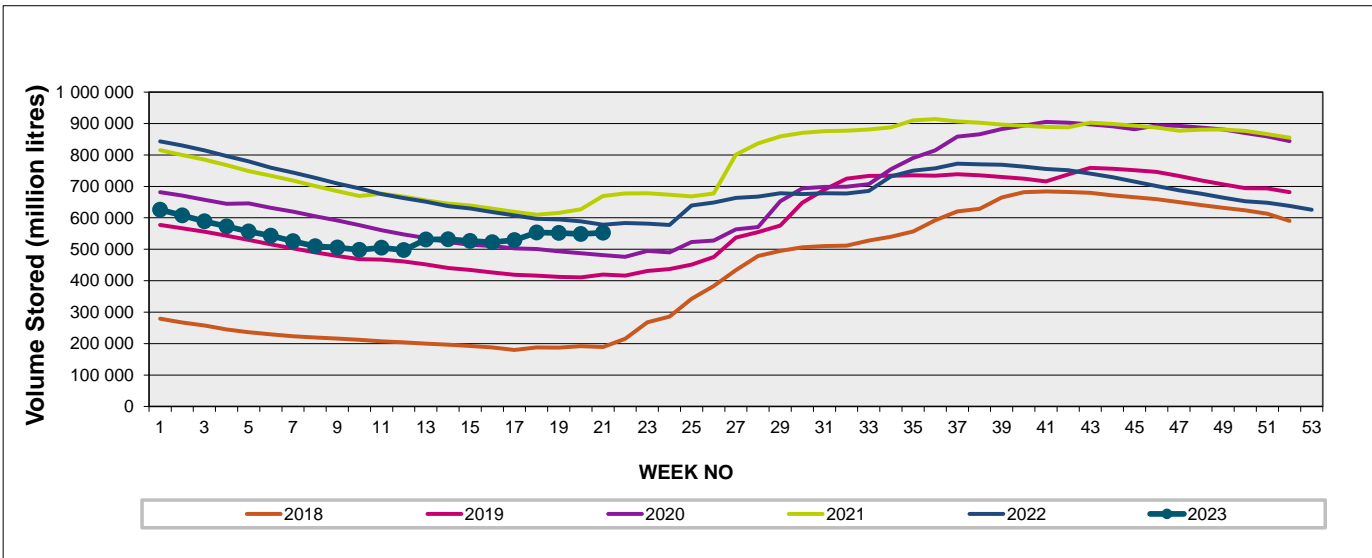
Weekly Change **0.4%**

MAJOR DAMS (WCWSS)	STORAGE						
	CAPACITY	%	%	%	%	%	%
	MI	22 May 2023	Previous week	2022	2021	2020	2019
BERG RIVER	130 010	87.4	86.6	67.7	83.4	65.1	70.6
STEENBRAS LOWER	33 517	53.9	53.6	61.5	62.9	47.2	40.7
STEENBRAS UPPER	31 767	98.9	98.3	83.2	56.9	96.4	67.9
THEEWATERSKLOOF	480 188	59.0	58.0	66.8	79.7	50.1	37.2
VOËLVLEI	164 095	39.2	40.1	57.0	59.7	49.9	55.4
WEMMERSHOEK	58 644	71.3	71.9	50.3	62.6	42.2	42.9
TOTAL STORED	898 221	552 457	548 490	578 983	665 256	478 193	421 404
% STORAGE		61.5%	61.1%	64.5%	74.1%	53.2%	46.9%

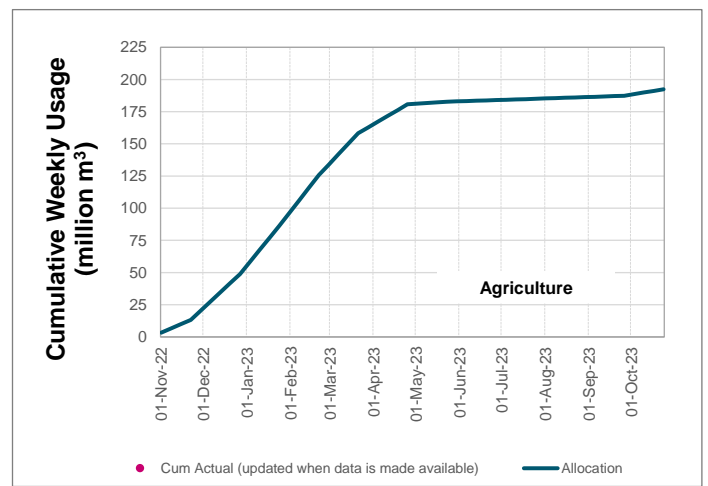
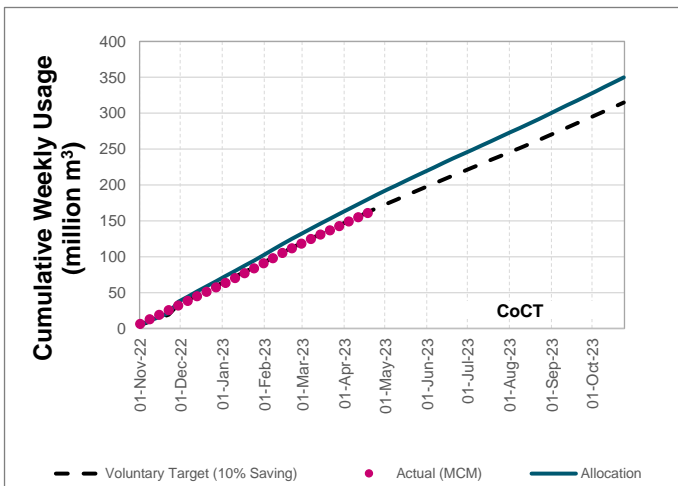
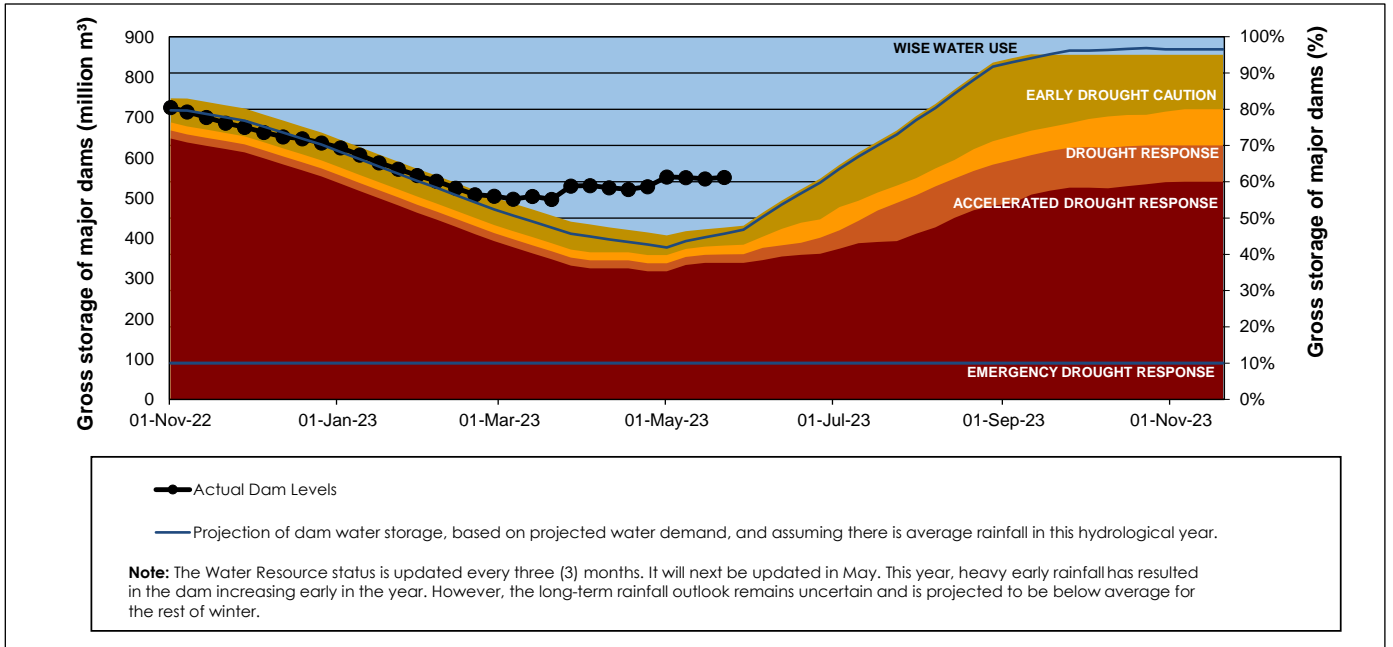
WCWSS Storage Record (2008 - Present)



WCWSS Comparative Storage Graph



Projected WCWSS Dam Storage Levels



Water Stored in Minor Dams

Overall Percentage Full **59.1**

Weekly Change **-0.65**

MINOR DAMS	STORAGE						
	CAPACITY	%	%	%	%	%	%
	MI	22 May 2023	Previous week	2022	2021	2020	2019
ALEXANDRA (Table Mountain)	126	90.9	90.2	55.6	0.0	33.3	0.0
DE VILLIERS (Table Mountain)	243	100.0	101.2	69.7	55.0	93.7	64.3
HELY-HUTCHINSON (Table Mount)	925	85.7	83.6	31.5	31.3	12.4	15.2
KLEINPLAATS (Simon's Town)	1 368	7.8	11.3	43.6	45.4	36.5	43.6
LAND-EN-ZEEZICHT (Helderberg)	451	82.8	84.0	73.9	69.5	61.8	100.0
LEWIS GAY (Simon's Town)	182	91.4	72.3	0.0	57.1	12.0	0.0
VICTORIA (Table Mountain)	128	100.4	90.0	52.6	8.3	72.4	8.3
WOODHEAD (Table Mountain)	954	68.5	72.5	62.3	68.7	98.0	58.8
Total Stored	4 377	2585.5	2614.0	2114.5	2104.6	2202.9	1908.4
Percentages stored		59.1	59.7	48.3	48.1	50.3	43.6

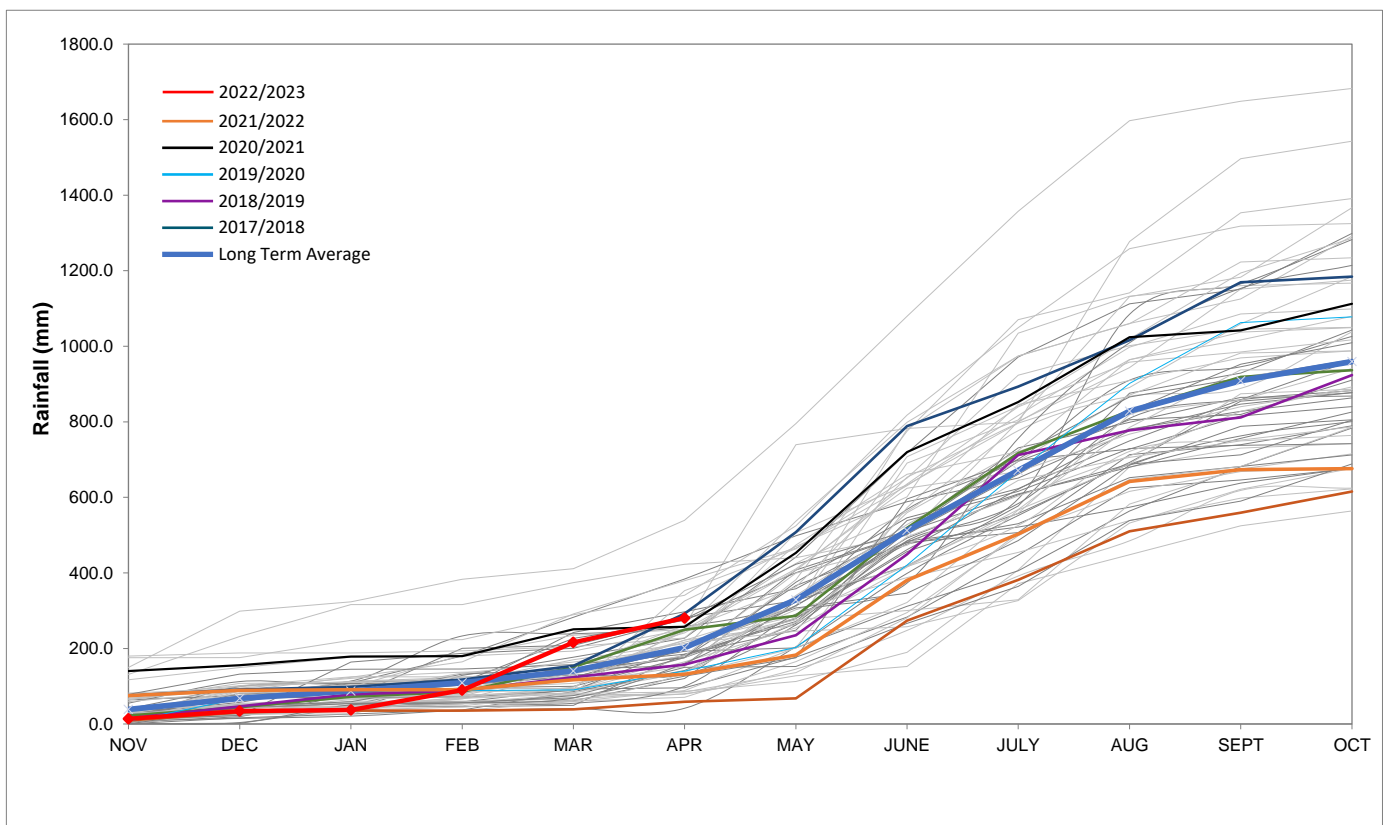
Rainfall Recorded

RAINFALL (mm)	15-May	16-May	17-May	18-May	19-May	20-May	21-May	May	
								Total*	LT Average
Blackheath Upper	0.0	0.0	5.2	0.0	0.0	2.0	6.0	24.7	55.7
Brooklands	0.0	0.0	4.0	0.0	0.0	20.0	0.0	36.0	107.1
Newlands	0.0	0.0	5.0	0.1	0.0	26.0	0.0	51.1	210.0
Steenbras	0.0	0.0	10.0	0.0	0.0	10.8	0.0	47.8	116.9
Table Mountain (Woodhead)	0.0	0.0	12.0	0.0	0.0	26.0	0.0	80.7	188.7
Theewaterskloof	0.0	0.0	11.0	0.0	0.0	5.0	1.4	32.5	48.5
Tygerberg	0.0	0.0	4.0	0.0	0.0	4.1	0.0	20.5	60.0
Voëlvlei	0.0	0.0	3.0	0.0	0.0	0.0	5.0	9.0	69.2
Wemmershoek	0.0	0.0	4.3	0.0	0.0	7.6	7.5	22.2	120.1
Wynberg	0.0	0.0	6.0	0.0	0.0	13.5	0.0	13.5	142.8

Notes: *Total/cummulative rainfall for month indicated above
LT: Long Term

Accumulated Monthly Rainfall at Wemmershoek

Note: Wemmershoek station used due to long record and mountainous location



Drinking Water Quality

SAMPLE PASS RATE

Month	Water Quality Compliance (%)	Target (%)
Oct-21	99.11	98
Nov-21	99.11	98
Dec-21	99.09	98
Jan-22	99.04	98
Feb-22	99.04	98
Mar-22	98.99	98
Apr-22	98.96	98
May-22	98.90	98
Jun-22	98.96	98
Jul-22	99.46	99
Aug-22	99.47	99
Sep-22	99.46	98.50
Oct-22	99.47	98.50
Nov-22	99.45	98.50
Dec-22	99.36	98.50
Jan-23	99.36	98.50
Feb-23	99.35	98.50
Mar-23	99.29	98.50
Apr-23	99.24	98.50

This table shows CCT drinking water quality compliance according to the South African National Standard 241:2015. Compliance, measured against all prescribed chemical and microbiological components, consistently exceeds the very high CCT target of 98.5%. (Overall compliance percentages of continuous sampling and analysis are released on a monthly basis.