



### Headline Statistics

<p>WCWSS DAM STORAGE (%)</p> <p><b>58,2</b></p>	<p>WEEKLY DAM LEVEL CHANGE (%)</p> <p><b>-0,80</b></p>	<p>AVERAGE TOTAL DAILY WATER USE (MLD)</p> <p><b>840</b></p>
---	--	--

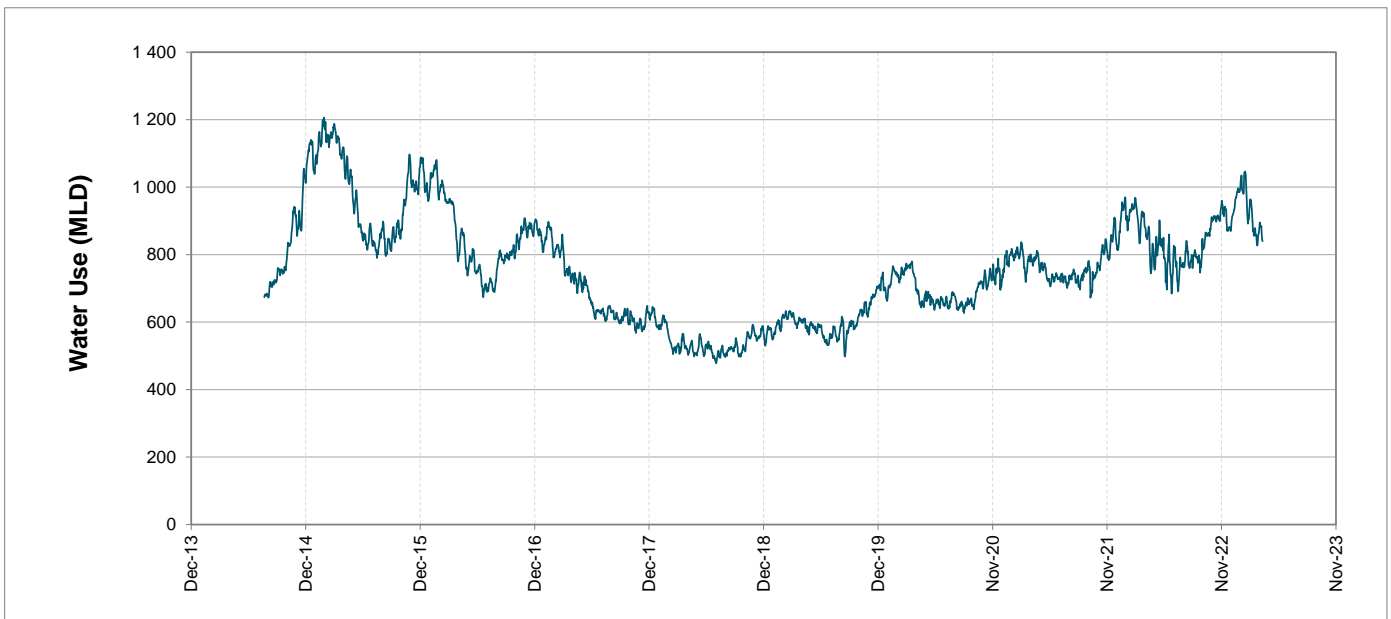
### Water Resource Status

WATER RESOURCE STATUS	MEANING OF CURRENT STATUS
Early Drought Caution	There is a strong indication of a possible, but not confirmed, drought cycle developing or continuing from the record low rainfall levels between 2015-2017. It is important to continue using water wisely. There is no immediate cause for concern about water security in Cape Town. However, it is the responsible step to take now for Cape Town to collectively aim not to exceed a target of 850 millions of litres per day (MLD) to lower the risk of restrictions at a later stage.

### Water Production from Different Sources

<p>MAJOR DAMS (MLD)</p> <p><b>834</b></p>	<p>MINOR DAMS (MLD)</p> <p><b>5</b></p>	<p>GROUND WATER AND SPRINGS (MLD)</p> <p><b>1</b></p>
---	---	---

### Overall Water Usage Trend (2010 - Present)



WCWSS means Western Cape Water Supply System

MLD means million litres per day

More information on Water Saving and Restrictions is available on the City of Cape Town's 'ThinkWater' website

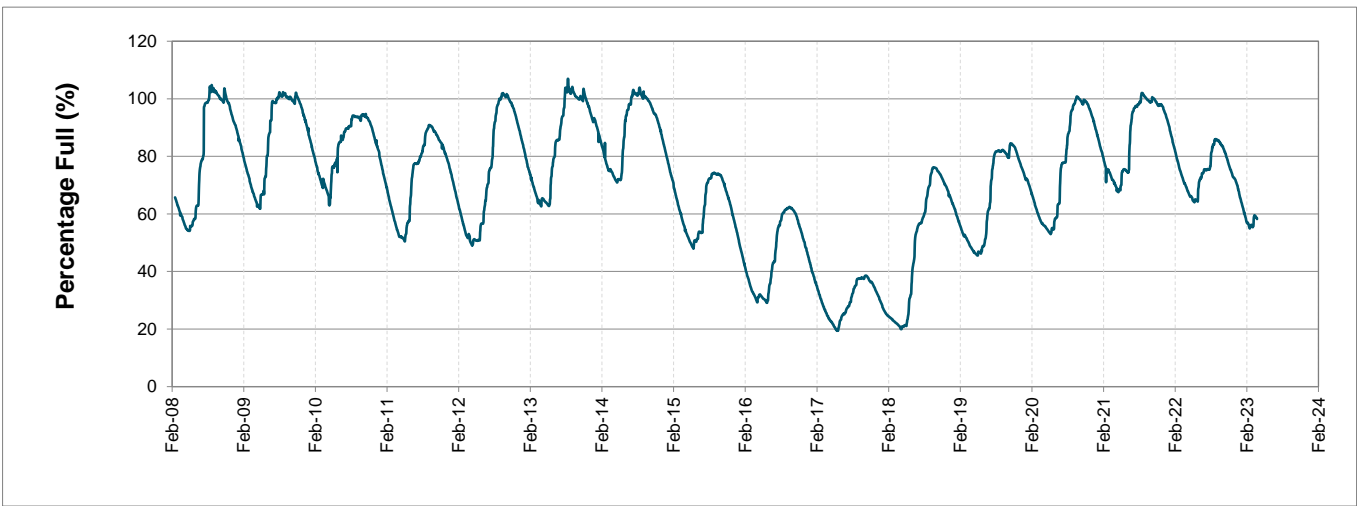
# Water Stored in Major Dams (WCWSS)

Overall Percentage Full **58,2%**

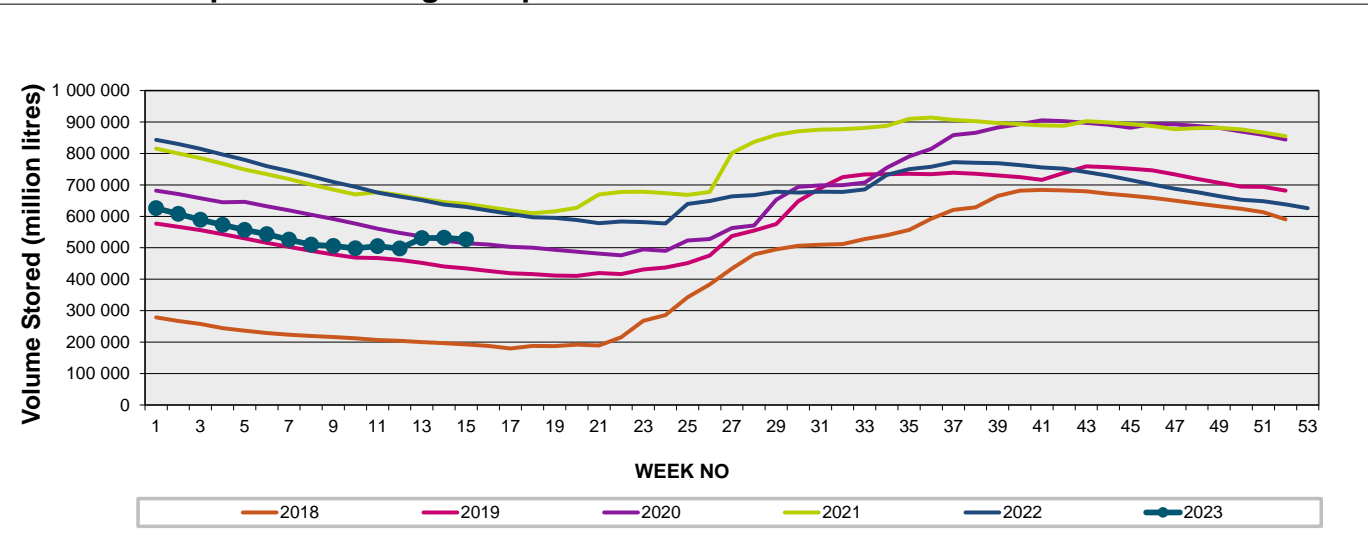
Weekly Change **-0,8%**

MAJOR DAMS (WCWSS)	STORAGE						
	CAPACITY	%	%	%	%	%	%
	MI	11 April 2023	Previous week	2022	2021	2020	2019
BERG RIVER	130 010	77,8	77,9	72,5	73,7	66,8	69,9
STEENBRAS LOWER	33 517	55,3	53,9	67,7	60,6	57,3	44,4
STEENBRAS UPPER	31 767	96,1	93,4	92,1	53,0	96,8	69,2
THEEWATERSKLOOF	480 188	55,4	56,8	72,1	75,9	52,8	38,1
VOËLVLEI	164 095	39,7	40,3	63,0	63,3	53,5	59,0
WEMMERSHOEK	58 644	70,8	71,8	58,2	66,8	52,3	51,9
<b>TOTAL STORED</b>	<b>898 221</b>	<b>522 987</b>	<b>530 089</b>	<b>629 752</b>	<b>640 448</b>	<b>508 564</b>	<b>437 942</b>
<b>% STORAGE</b>		<b>58,2%</b>	<b>59,0%</b>	<b>70,1%</b>	<b>71,3%</b>	<b>56,6%</b>	<b>48,8%</b>

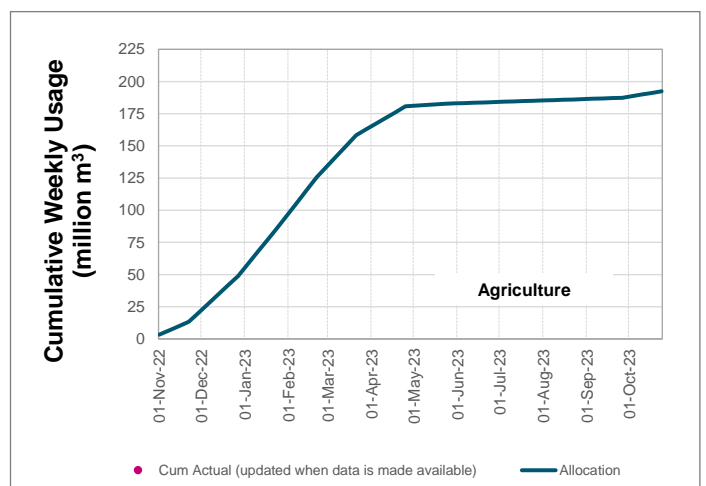
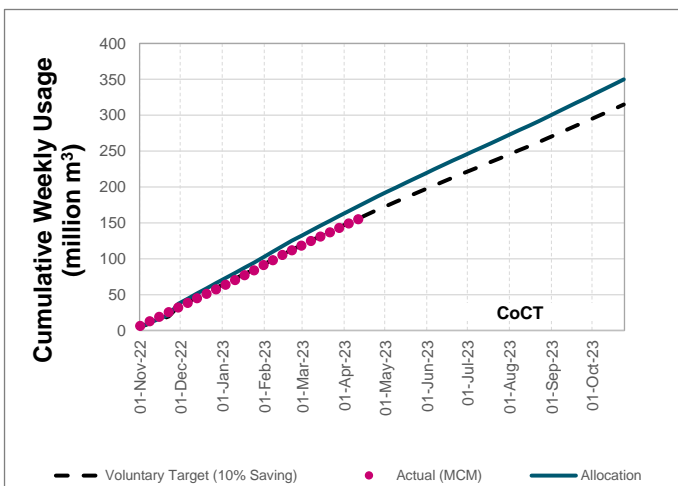
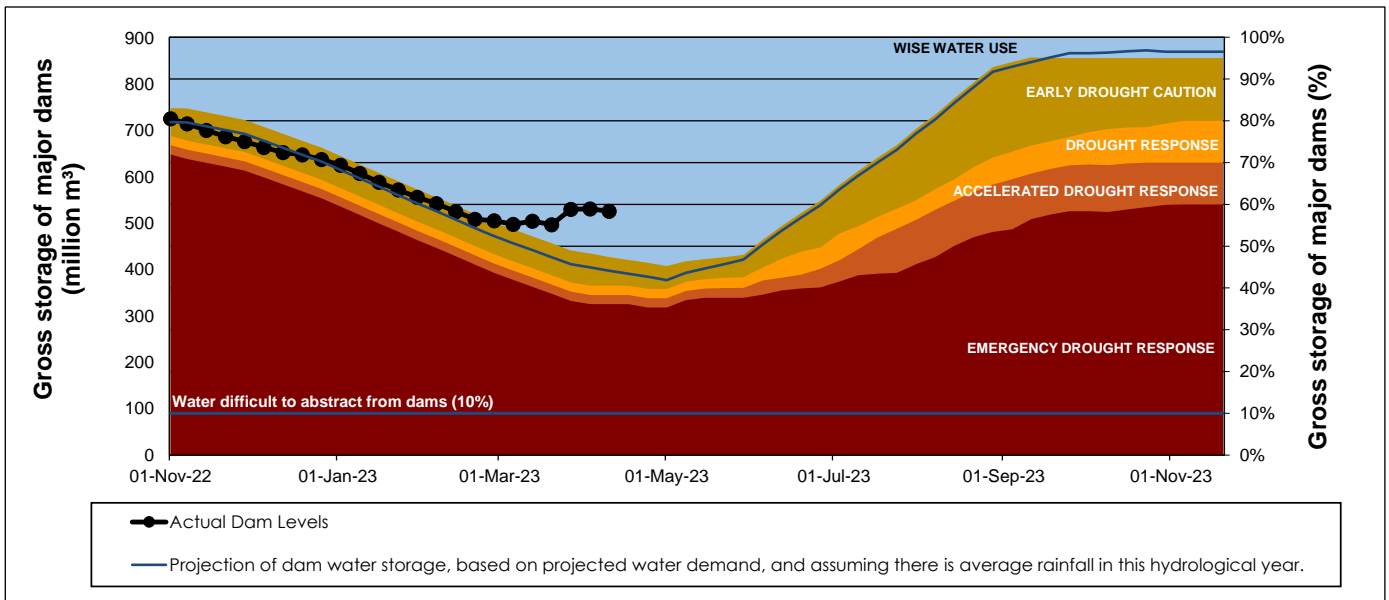
## WCWSS Storage Record (2008 - Present)



## WCWSS Comparative Storage Graph



# Projected WCWSS Dam Storage Levels



## Water Stored in Minor Dams

Overall Percentage Full **50,3**

Weekly Change **3,85**

MINOR DAMS	STORAGE						
	CAPACITY	%	%	%	%	%	%
	MI	11 April 2023	Previous week	2022	2021	2020	2019
ALEXANDRA (Table Mountain)	126	57,0	56,3	58,0	0,0	32,5	0,0
DE VILLIERS (Table Mountain)	243	95,5	97,1	67,3	53,9	93,5	65,7
HELY-HUTCHINSON (Table Mount)	925	31,8	32,0	18,3	11,6	0,0	0,0
KLEINPLAATS (Simon's Town)	1 368	19,5	21,9	57,2	52,2	41,0	48,2
LAND-EN-ZEEZICHT (Helderberg)	451	86,2	86,2	78,6	69,3	59,1	95,5
LEWIS GAY (Simon's Town)	182	53,2	56,8	1,3	51,9	0,0	0,0
VICTORIA (Table Mountain)	128	100,4	99,3	50,6	0,0	72,7	0,0
WOODHEAD (Table Mountain)	954	75,5	53,6	71,8	70,8	86,9	64,6
<b>Total Stored</b>	<b>4 377</b>	<b>2203,0</b>	<b>2034,4</b>	<b>2278,8</b>	<b>2007,8</b>	<b>2006,2</b>	<b>1854,6</b>
<b>Percentages stored</b>		<b>50,3</b>	<b>46,5</b>	<b>52,1</b>	<b>45,9</b>	<b>45,8</b>	<b>42,4</b>

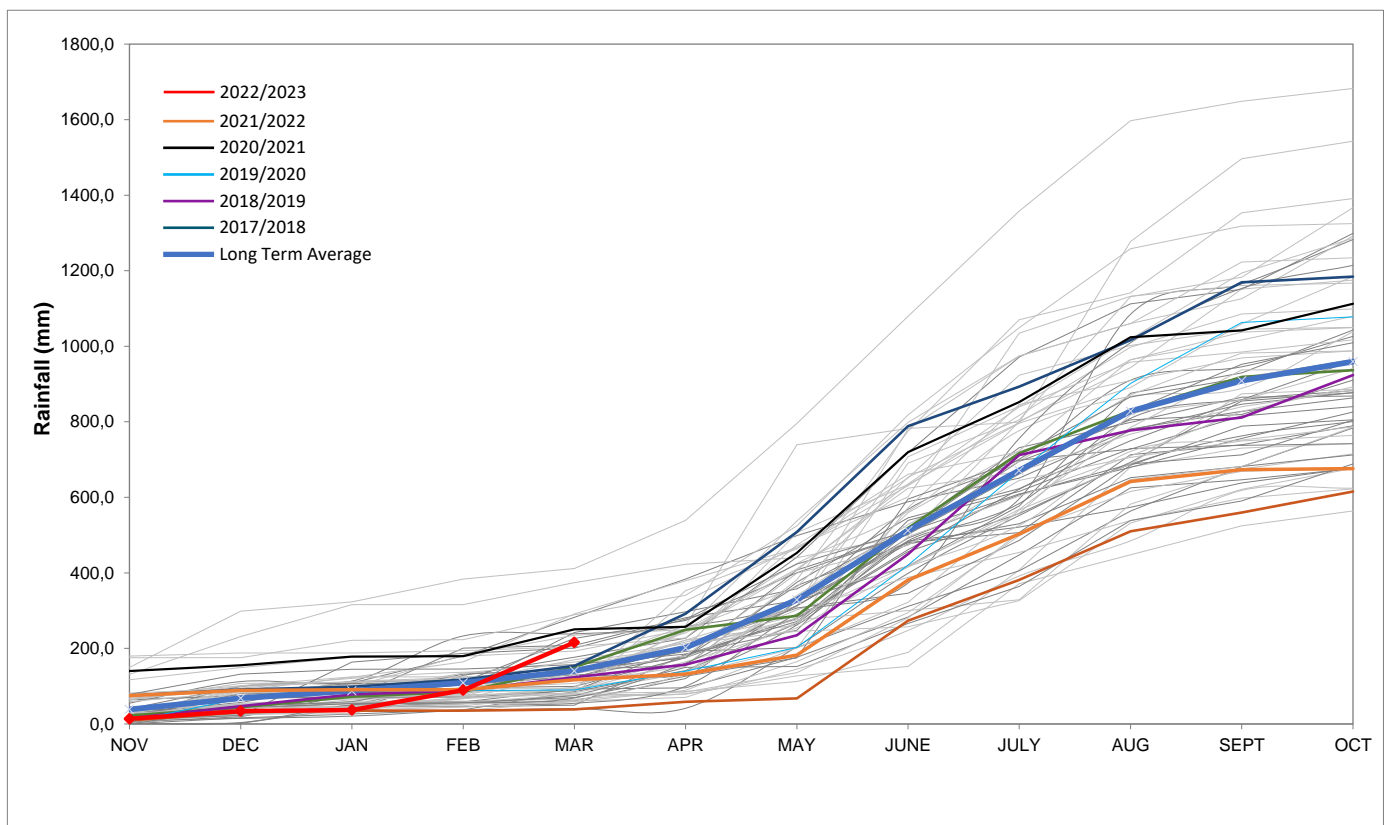
## Rainfall Recorded

RAINFALL (mm)	04-Apr	05-Apr	06-Apr	07-Apr	08-Apr	09-Apr	10-Apr	Apr	
								Total*	LT Average
Blackheath Upper	0,0	0,0	0,0	2,2	0,0	0,6	0,0	2,8	36,1
Brooklands	0,0	0,0	0,0	10,0	0,0	5,0	0,0	21,0	61,9
Newlands	0,0	0,0	0,0	5,0	0,0	4,0	0,0	9,0	109,5
Steenbras	0,0	0,0	0,0	8,0	0,0	3,1	0,0	12,0	81,3
Table Mountain (Woodhead)	0,0	0,0	2,0	16,0	0,0	6,0	0,0	26,2	125,0
Theewaterskloof	0,0	0,0	0,0	4,0	0,0	3,0	0,0	8,0	53,3
Tygerberg	0,0	0,0	0,0	1,0	0,0	25,0	0,0	26,0	35,7
Voëlvllei	0,0	0,0	0,0	6,0	0,0	10,5	0,0	16,5	40,2
Wemmershoek	0,0	0,0	0,0	2,5	0,0	3,3	0,0	5,8	67,8
Wynberg	0,0	0,0	0,0	7,0	0,0	1,5	0,0	8,5	62,9

Notes: \*Total/cummulative rainfall for month indicated above  
LT: Long Term

## Accumulated Monthly Rainfall at Wemmershoek

Note: Wemmershoek station used due to long record and mountainous location



## Drinking Water Quality

### SAMPLE PASS RATE

Month	Water Quality Compliance (%)	Target (%)
Oct-21	99,11	98
Nov-21	99,11	98
Dec-21	99,09	98
Jan-22	99,04	98
Feb-22	99,04	98
Mar-22	98,99	98
Apr-22	98,96	98
May-22	98,90	98
Jun-22	98,96	98
Jul-22	99,46	99
Aug-22	99,47	99
Sep-22	99,46	98,50
Oct-22	99,47	98,50
Nov-22	99,45	98,50
Dec-22	99,36	98,50
Jan-23	99,36	98,50
Feb-23	99,35	98,50
Mar-23	99,29	98,50

This table shows CCT drinking water quality compliance according to the South African National Standard 241:2015. Compliance, measured against all prescribed chemical and microbiological components, consistently exceeds the very high CCT target of 98.5%. (Overall compliance percentages of continuous sampling and analysis are released on a monthly basis.