



Headline Statistics

<p>WCWSS DAM STORAGE (%)</p> <p>56,8</p>	<p>WEEKLY DAM LEVEL CHANGE (%)</p> <p>-1,70</p>	<p>AVERAGE TOTAL DAILY WATER USE (MLD)</p> <p>950</p>
-------------------------------------------------	--------------------------------------------------------	--------------------------------------------------------------

Water Resource Status

WATER RESOURCE STATUS	MEANING OF CURRENT STATUS
Early Drought Caution	There is a strong indication of a possible, but not confirmed, drought cycle developing or continuing from the record low rainfall levels between 2015-2017. It is important to continue using water wisely. There is no immediate cause for concern about water security in Cape Town. However, it is the responsible step to take now for Cape Town to collectively aim not to exceed a target of 850 millions of litres per day (MLD) to lower the risk of restrictions at a later stage.

Water Production from Different Sources

<p>MAJOR DAMS (MLD)</p> <p>940</p>	<p>MINOR DAMS (MLD)</p> <p>9</p>	<p>GROUND WATER AND SPRINGS (MLD)</p> <p>1</p>
-------------------------------------------	-----------------------------------------	-------------------------------------------------------

Overall Water Usage Trend (2010 - Present)



WCWSS means Western Cape Water Supply System

MLD means million litres per day

More information on Water Saving and Restrictions is available on the City of Cape Town's 'ThinkWater' website

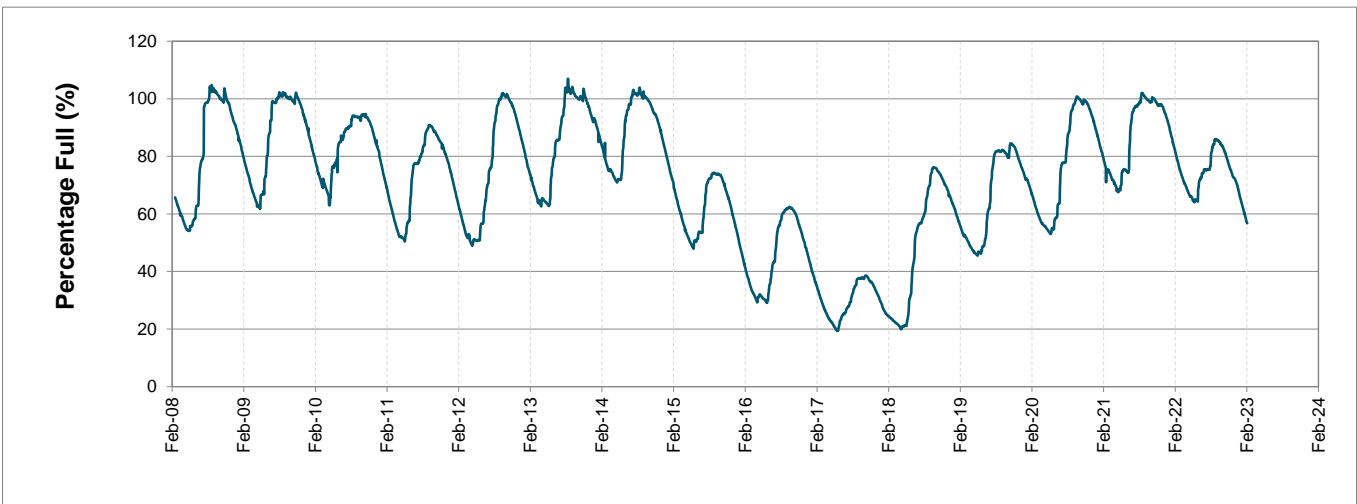
Water Stored in Major Dams (WCWSS)

Overall Percentage Full **56,8%**

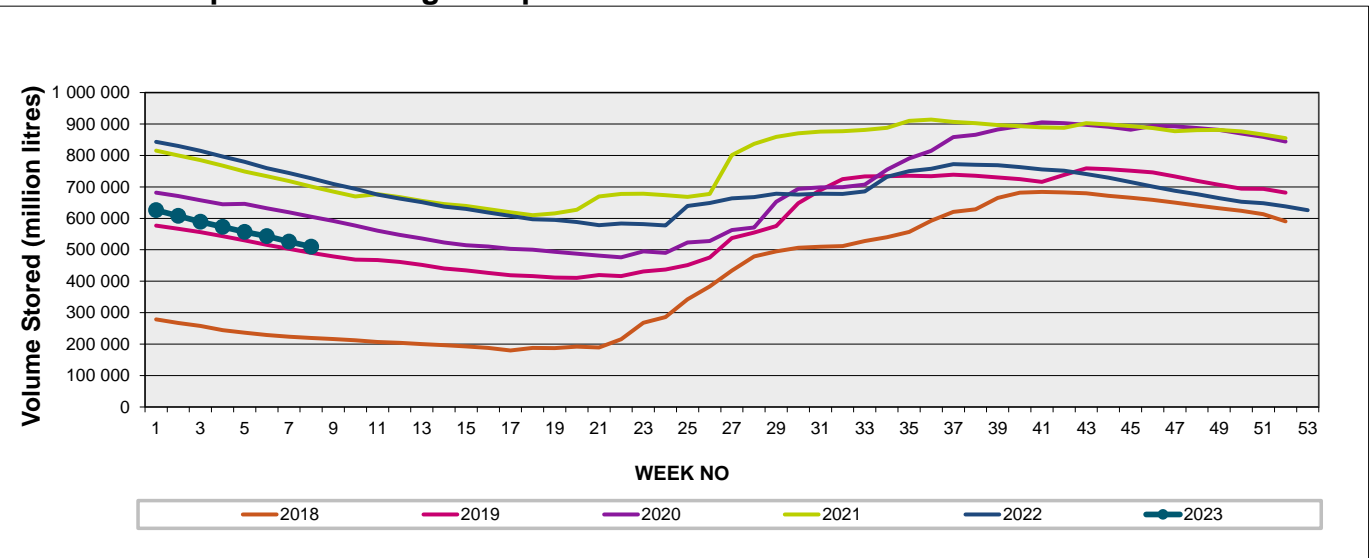
Weekly Change **-1,7%**

MAJOR DAMS (WCWSS)	STORAGE						
	CAPACITY	%	%	%	%	%	%
	MI	20 February 2023	Previous week	2022	2021	2020	2019
BERG RIVER	130 010	71,8	74,3	82,4	78,6	79,7	77,3
STEENBRAS LOWER	33 517	57,2	58,4	76,3	73,3	71,3	54,8
STEENBRAS UPPER	31 767	89,0	91,7	91,0	49,7	98,8	70,2
THEEWATERSKLOOF	480 188	53,8	55,2	83,5	82,5	60,9	43,2
VOËLVLEI	164 095	42,2	44,4	76,6	73,1	66,3	69,2
WEMMERSHOEK	58 644	70,8	72,5	71,7	78,9	66,5	64,6
TOTAL STORED	898 221	509 765	525 489	730 338	704 725	598 861	500 083
% STORAGE		56,8%	58,5%	81,3%	78,5%	66,7%	55,7%

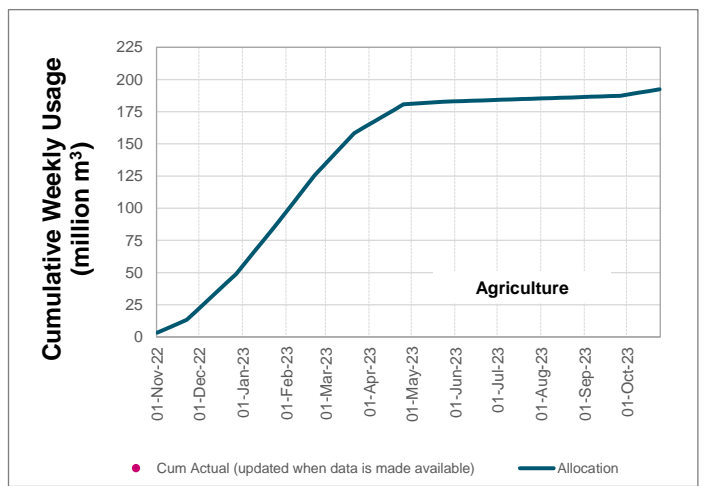
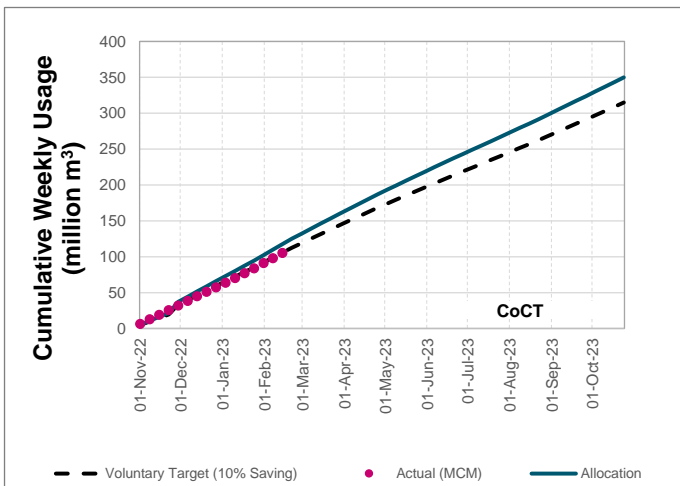
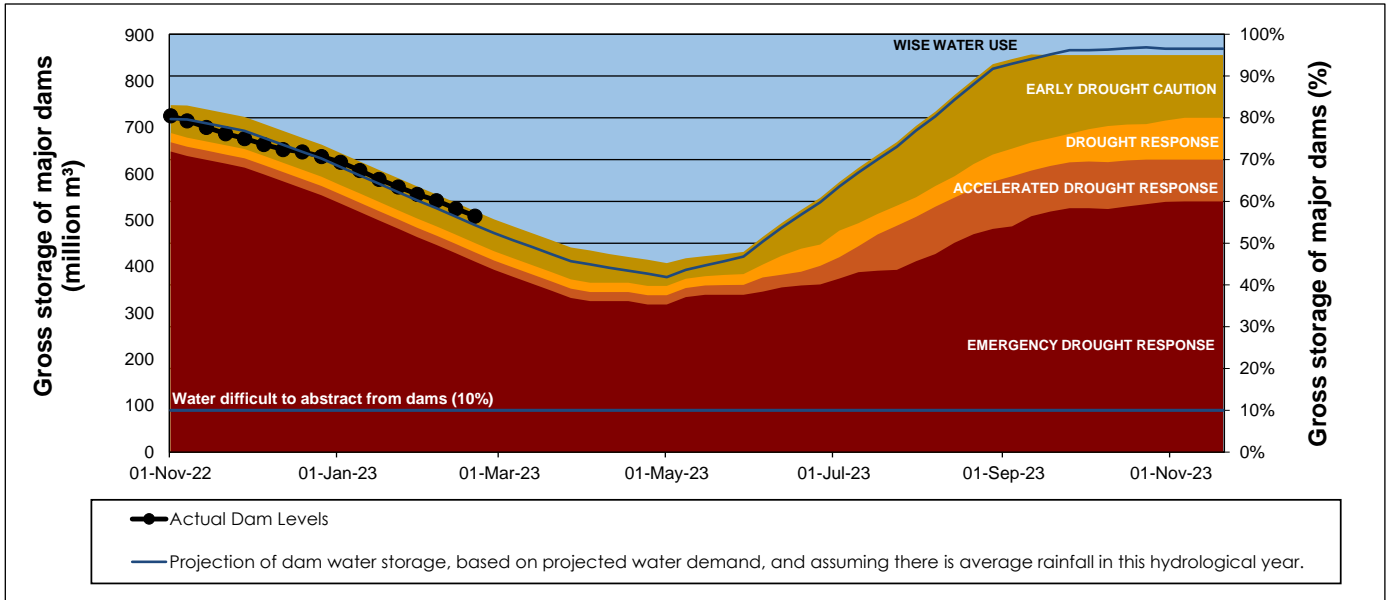
WCWSS Storage Record (2008 - Present)



WCWSS Comparative Storage Graph



Projected WCWSS Dam Storage Levels



Water Stored in Minor Dams

Overall Percentage Full **42,2**

Weekly Change **-1,90**

MINOR DAMS	STORAGE						
	CAPACITY	%	%	%	%	%	%
	MI	20 February 2023	Previous week	2022	2021	2020	2019
ALEXANDRA (Table Mountain)	126	44,0	45,2	65,2	66,8	36,4	42,9
DE VILLIERS (Table Mountain)	243	80,3	80,5	64,7	54,9	97,0	41,3
HELY-HUTCHINSON (Table Mount)	925	2,2	2,2	39,1	31,6	12,5	78,2
KLEINPLAATS (Simon's Town)	1 368	32,8	34,3	67,2	67,8	52,4	62,9
LAND-EN-ZEEZICHT (Helderberg)	451	84,8	85,7	85,7	78,5	72,0	91,3
LEWIS GAY (Simon's Town)	182	51,6	49,4	55,7	58,4	3,6	0,0
VICTORIA (Table Mountain)	128	75,6	76,9	54,4	0,0	82,3	42,0
WOODHEAD (Table Mountain)	954	59,0	65,0	48,3	57,2	99,2	48,0
Total Stored	4 377	1847,6	1930,6	2509,0	2412,9	2480,9	2642,5
Percentages stored		42,2	44,1	57,3	55,1	56,7	60,4

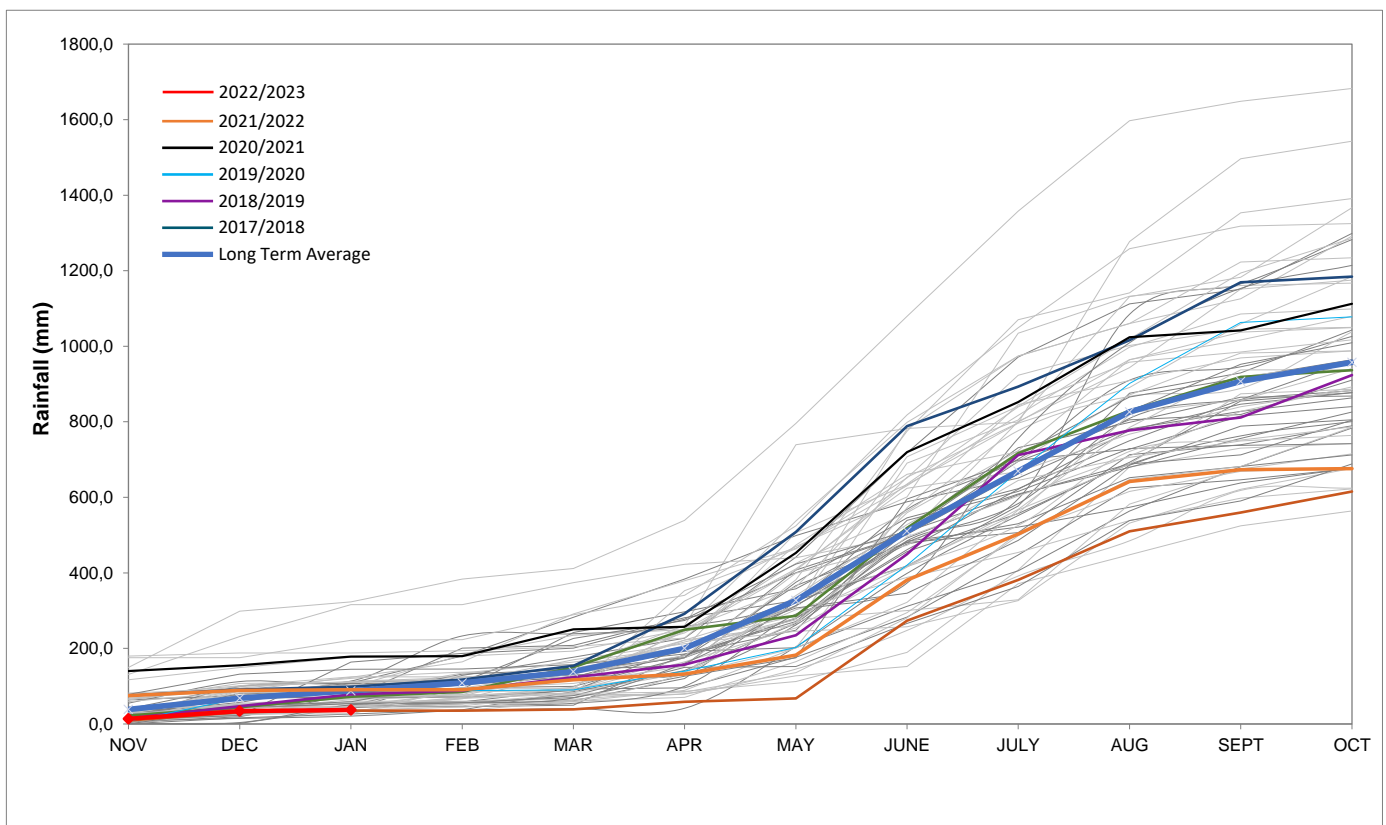
Rainfall Recorded

RAINFALL (mm)	13-Feb	14-Feb	15-Feb	16-Feb	17-Feb	18-Feb	19-Feb	Feb	
								Total*	LT Average
Blackheath Upper	0,0	0,0	0,0	0,0	0,0	0,0	0,0	0,0	15,1
Brooklands	0,0	0,0	0,0	0,0	0,0	0,0	2,0	2,0	19,2
Newlands	0,0	0,0	0,0	0,0	0,0	0,0	4,0	4,0	29,1
Steenbras	0,0	0,0	0,0	0,1	0,0	0,0	3,0	3,1	27,0
Table Mountain (Woodhead)	0,0	0,0	0,0	0,0	0,0	0,0	0,0	5,5	40,1
Theewaterskloof	0,0	0,0	4,6	8,1	37,4	0,0	0,0	55,3	22,6
Tygerberg	0,0	0,0	0,0	0,0	0,0	0,0	0,0	0,0	7,1
Voëlveli	0,0	0,0	0,0	19,0	8,0	0,0	0,8	27,8	9,3
Wemmershoek	0,0	0,0	0,0	7,2	0,0	0,0	4,2	11,4	15,7
Wynberg	0,0	0,0	0,0	0,0	0,0	0,0	4,0	4,0	11,7

Notes: *Total/cummulative rainfall for month indicated above
LT: Long Term

Accumulated Monthly Rainfall at Wemmershoek

Note: Wemmershoek station used due to long record and mountainous location



Drinking Water Quality

SAMPLE PASS RATE

Month	Water Quality Compliance (%)	Target (%)
Oct-21	99,11	98
Nov-21	99,11	98
Dec-21	99,09	98
Jan-22	99,04	98
Feb-22	99,04	98
Mar-22	98,99	98
Apr-22	98,96	98
May-22	98,90	98
Jun-22	98,96	98
Jul-22	99,46	99
Aug-22	99,47	99
Sep-22	99,46	98,50
Oct-22	99,47	98,50
Nov-22	99,45	98,50
Dec-22	99,36	98,50
Jan-23	99,36	98,50

This table shows CCT drinking water quality compliance according to the South African National Standard 241:2015. Compliance, measured against all prescribed chemical and microbiological components, consistently exceeds the very high CCT target of 98.5%. (Overall compliance percentages of continuous sampling and analysis are released on a monthly basis.