



Headline Statistics

| | | |
|---|--|---|
| <p>WCWSS DAM STORAGE (%)</p> <p>60,5</p> | <p>WEEKLY DAM LEVEL CHANGE (%)</p> <p>-1,50</p> | <p>AVERAGE TOTAL DAILY WATER USE (MLD)</p> <p>1000</p> |
|---|--|---|

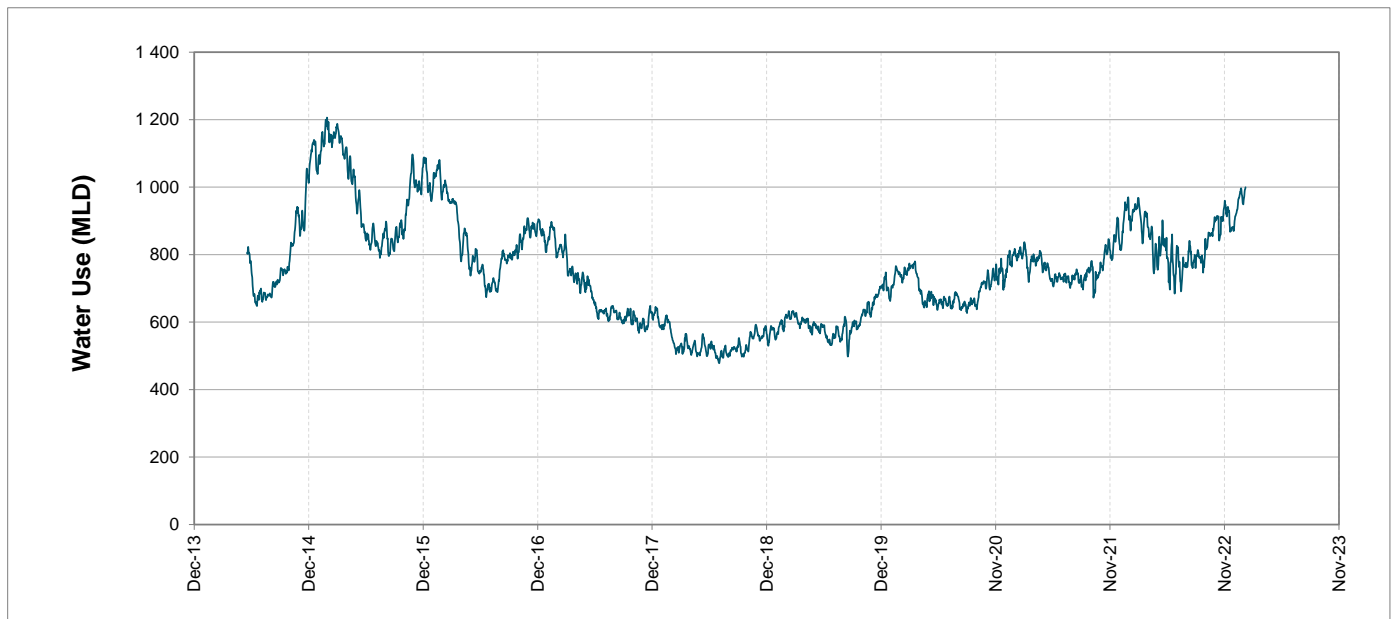
Water Resource Status

| WATER RESOURCE STATUS | MEANING OF CURRENT STATUS |
|-----------------------|--|
| Early Drought Caution | There is a strong indication of a possible, but not confirmed, drought cycle developing or continuing from the record low rainfall levels between 2015-2017. It is important to continue using water wisely. There is no immediate cause for concern about water security in Cape Town. However, it is the responsible step to take now for Cape Town to collectively aim not to exceed a target of 850 millions of litres per day (MLD) to lower the risk of restrictions at a later stage. |

Water Production from Different Sources

| | | |
|---|---|---|
| <p>MAJOR DAMS (MLD)</p> <p>989</p> | <p>MINOR DAMS (MLD)</p> <p>9</p> | <p>GROUND WATER AND SPRINGS (MLD)</p> <p>2</p> |
|---|---|---|

Overall Water Usage Trend (2010 - Present)



WCWSS means Western Cape Water Supply System

MLD means million litres per day

More information on Water Saving and Restrictions is available on the City of Cape Town's 'ThinkWater' website

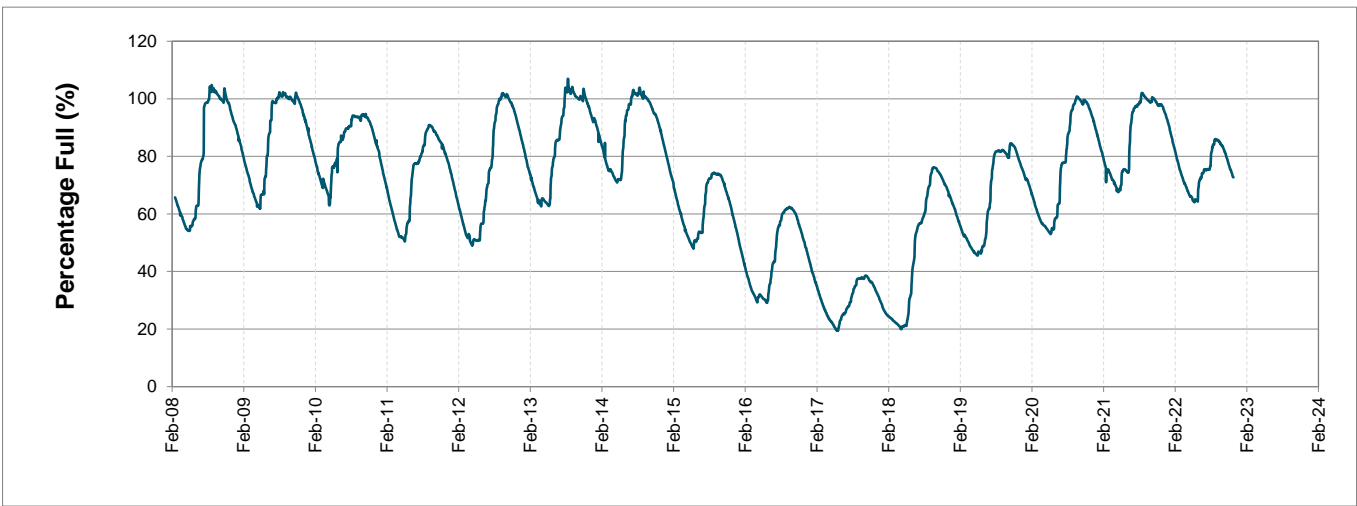
Water Stored in Major Dams (WCWSS)

Overall Percentage Full **60,5%**

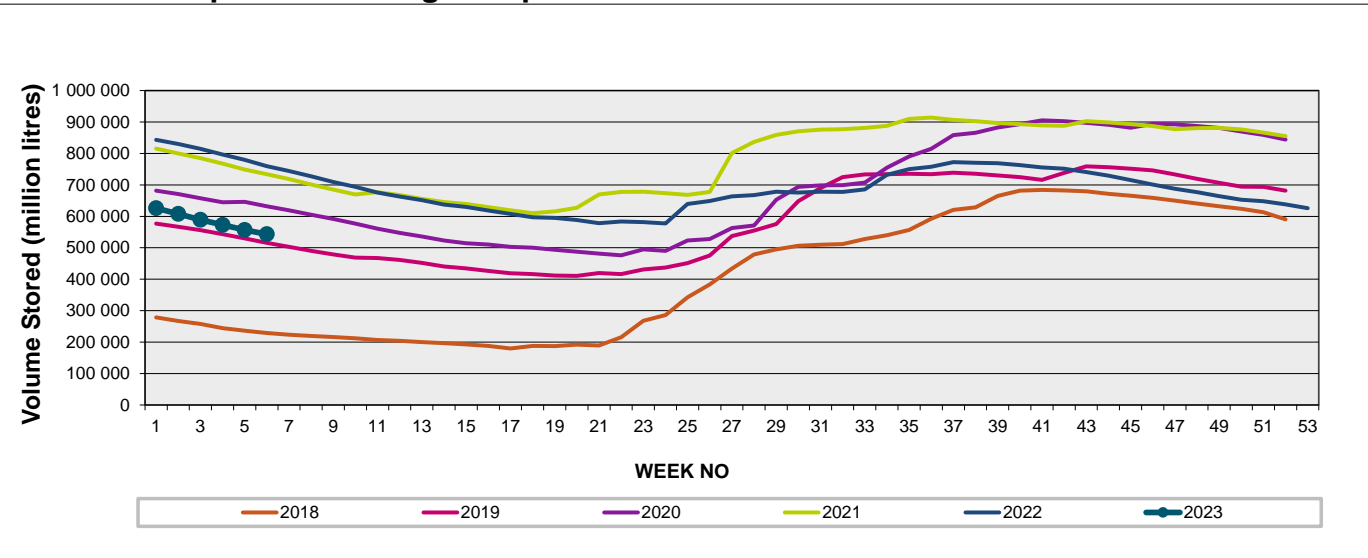
Weekly Change **-1,5%**

| MAJOR DAMS (WCWSS) | STORAGE | | | | | | |
|---------------------|----------------|------------------|----------------|----------------|----------------|----------------|----------------|
| | CAPACITY | % | % | % | % | % | % |
| | MI | 06 February 2023 | Previous week | 2022 | 2021 | 2020 | 2019 |
| BERG RIVER | 130 010 | 76,8 | 79,1 | 86,4 | 82,5 | 83,3 | 80,8 |
| STEENBRAS LOWER | 33 517 | 60,7 | 63,0 | 79,8 | 77,4 | 75,6 | 58,4 |
| STEENBRAS UPPER | 31 767 | 93,0 | 93,2 | 89,3 | 56,7 | 99,3 | 70,7 |
| THEEWATERSKLOOF | 480 188 | 56,5 | 58,3 | 87,1 | 85,8 | 63,1 | 45,3 |
| VOËLVLEI | 164 095 | 48,2 | 48,2 | 79,9 | 76,8 | 70,6 | 73,1 |
| WEMMERSHOEK | 58 644 | 73,1 | 75,4 | 75,9 | 82,9 | 70,5 | 68,4 |
| TOTAL STORED | 898 221 | 543 024 | 556 774 | 761 229 | 737 822 | 625 413 | 524 895 |
| % STORAGE | | 60,5% | 62,0% | 84,7% | 82,1% | 69,6% | 58,4% |

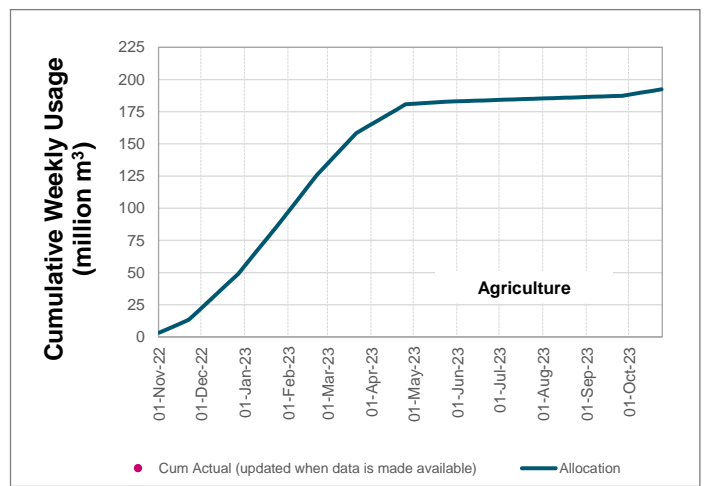
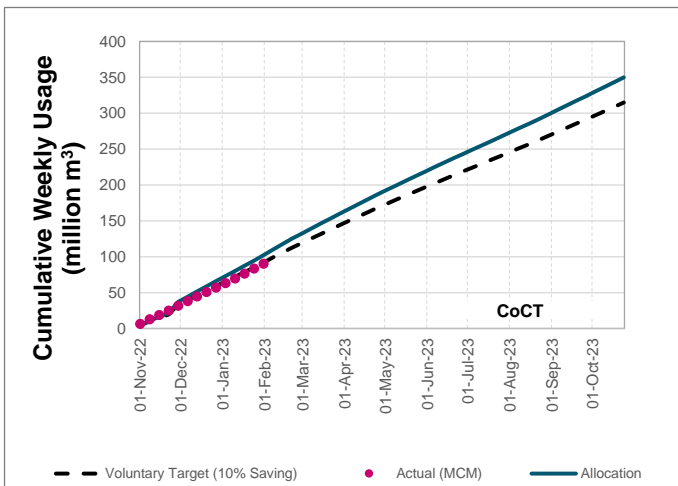
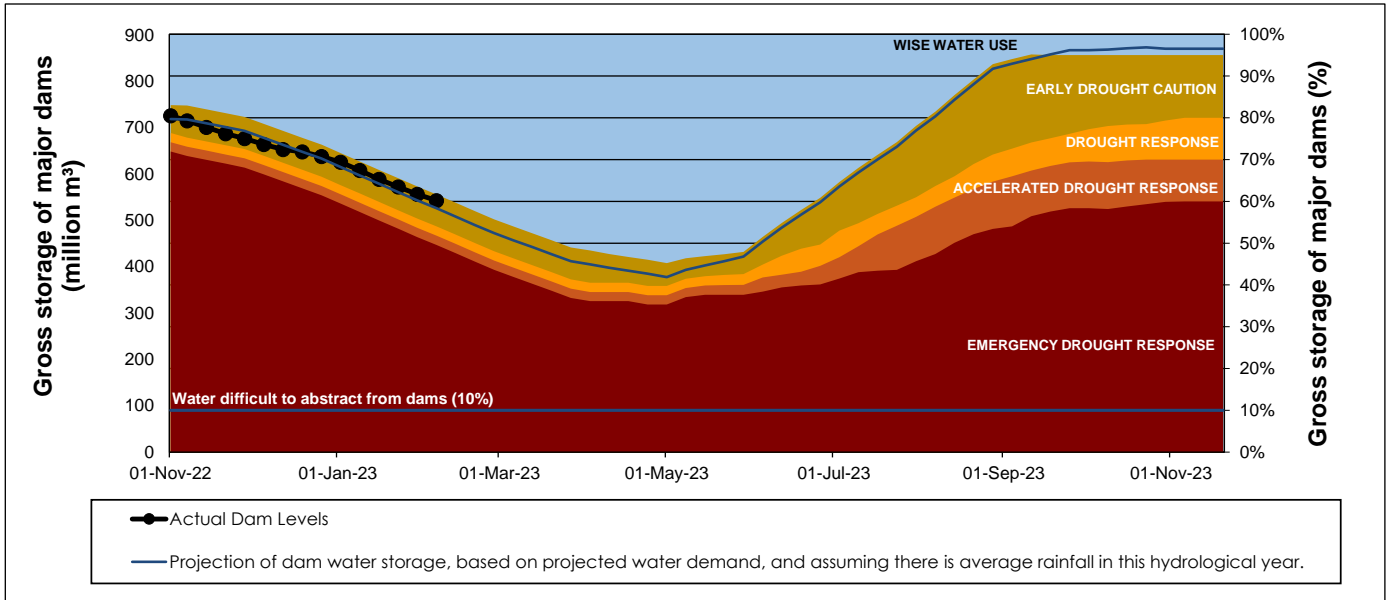
WCWSS Storage Record (2008 - Present)



WCWSS Comparative Storage Graph



Projected WCWSS Dam Storage Levels



Water Stored in Minor Dams

Overall Percentage Full **46,7**

Weekly Change **-1,72**

| MINOR DAMS | STORAGE | | | | | | |
|-------------------------------|--------------|------------------|---------------|---------------|---------------|---------------|---------------|
| | CAPACITY | % | % | % | % | % | % |
| | MI | 06 February 2023 | Previous week | 2022 | 2021 | 2020 | 2019 |
| ALEXANDRA (Table Mountain) | 126 | 46,1 | 47,3 | 70,9 | 29,8 | 39,0 | 18,5 |
| DE VILLIERS (Table Mountain) | 243 | 81,0 | 81,4 | 64,2 | 52,6 | 97,3 | 50,3 |
| HELY-HUTCHINSON (Table Mount) | 925 | 2,3 | 2,2 | 43,1 | 32,4 | 60,1 | 96,9 |
| KLEINPLAATS (Simon's Town) | 1 368 | 36,0 | 37,7 | 71,3 | 73,0 | 57,2 | 69,6 |
| LAND-EN-ZEEZICHT (Helderberg) | 451 | 85,5 | 86,4 | 88,9 | 85,0 | 76,3 | 91,5 |
| LEWIS GAY (Simon's Town) | 182 | 48,1 | 48,8 | 72,3 | 61,8 | 9,8 | 11,4 |
| VICTORIA (Table Mountain) | 128 | 77,9 | 80,6 | 57,2 | 69,1 | 84,4 | 77,6 |
| WOODHEAD (Table Mountain) | 954 | 74,3 | 78,8 | 54,3 | 77,4 | 61,2 | 53,8 |
| Total Stored | 4 377 | 2042,4 | 2117,7 | 2710,4 | 2750,9 | 2657,0 | 3013,4 |
| Percentages stored | | 46,7 | 48,4 | 61,9 | 62,8 | 60,7 | 68,8 |

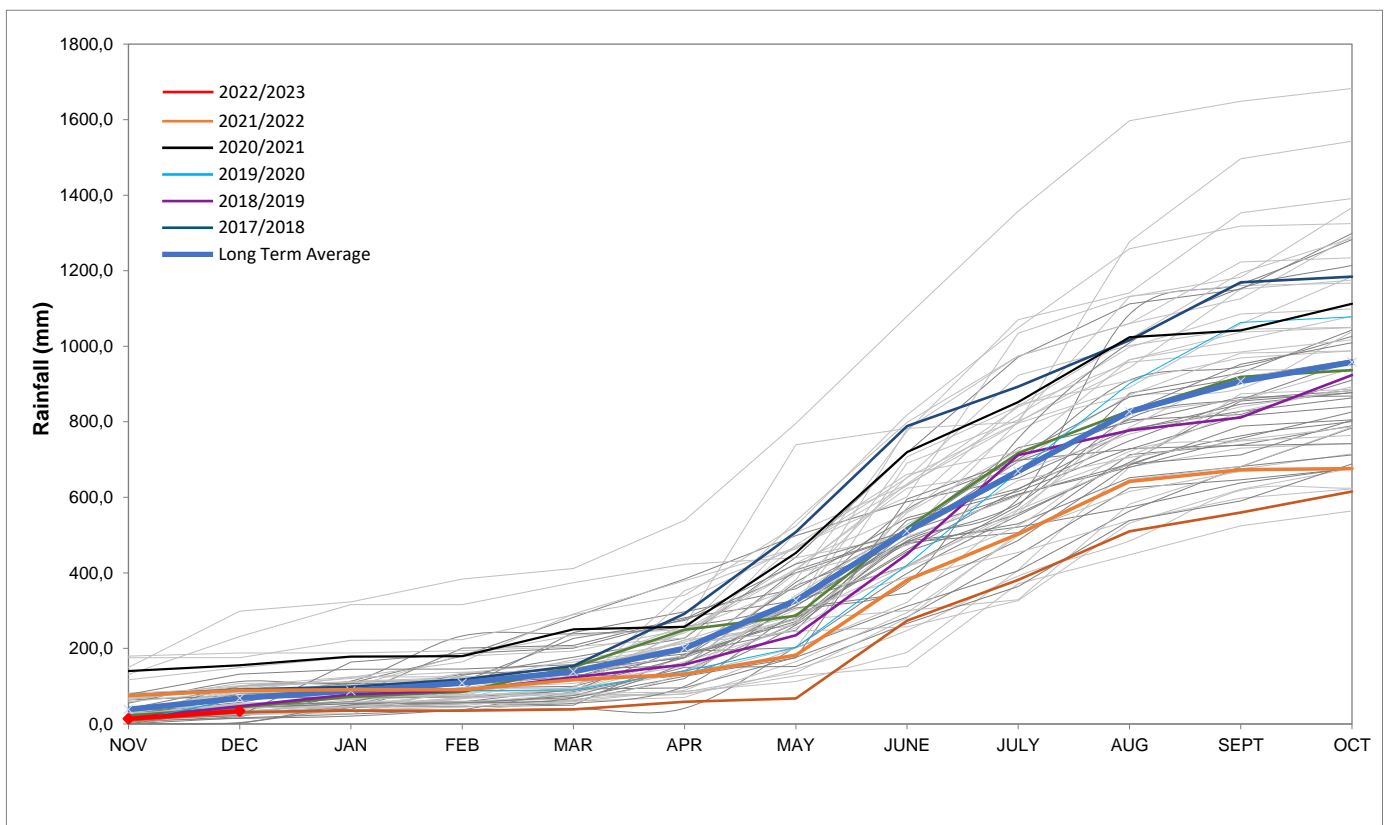
Rainfall Recorded

| RAINFALL (mm) | 30-Jan | 31-Jan | 01-Feb | 02-Feb | 03-Feb | 04-Feb | 05-Feb | Feb | |
|---------------------------|--------|--------|--------|--------|--------|--------|--------|--------|------------|
| | | | | | | | | Total* | LT Average |
| Blackheath Upper | 0,0 | 0,0 | 0,0 | 0,0 | 0,0 | 0,0 | 0,0 | 0,0 | 15,1 |
| Brooklands | 0,0 | 0,0 | 0,0 | 0,0 | 0,0 | 0,0 | 0,0 | 0,0 | 19,2 |
| Newlands | 0,0 | 0,0 | 0,0 | 0,0 | 0,0 | 0,0 | 0,0 | 0,0 | 29,1 |
| Steenbras | 0,0 | 0,0 | 0,0 | 0,0 | 0,0 | 0,0 | 0,0 | 0,0 | 27,0 |
| Table Mountain (Woodhead) | 0,0 | 0,0 | 0,0 | 0,0 | 0,0 | 0,0 | 0,0 | 0,0 | 40,1 |
| Theewaterskloof | 0,0 | 0,0 | 0,0 | 0,0 | 0,0 | 0,0 | 1,1 | 1,1 | 22,6 |
| Tygerberg | 0,0 | 0,0 | 0,0 | 0,0 | 0,0 | 0,0 | 0,0 | 0,0 | 7,1 |
| Voëlvele | 0,0 | 0,0 | 0,0 | 0,0 | 0,0 | 0,0 | 0,0 | 0,0 | 9,3 |
| Wemmershoek | #REF! | #REF! | #REF! | #REF! | #REF! | #REF! | #REF! | 0,0 | 15,7 |
| Wynberg | 0,0 | 0,0 | 0,0 | 0,0 | 0,0 | 0,0 | 0,0 | 0,0 | 11,7 |

Notes: *Total/cummulative rainfall for month indicated above
LT: Long Term

Accumulated Monthly Rainfall at Wemmershoek

Note: Wemmershoek station used due to long record and mountainous location



Drinking Water Quality

SAMPLE PASS RATE

| Month | Water Quality Compliance (%) | Target (%) |
|--------|------------------------------|------------|
| Sep-21 | 99,09 | 98 |
| Oct-21 | 99,11 | 98 |
| Nov-21 | 99,11 | 98 |
| Dec-21 | 99,09 | 98 |
| Jan-22 | 99,04 | 98 |
| Feb-22 | 99,04 | 98 |
| Mar-22 | 98,99 | 98 |
| Apr-22 | 98,96 | 98 |
| May-22 | 98,90 | 98 |
| Jun-22 | 98,96 | 98 |
| Jul-22 | 99,46 | 99 |
| Aug-22 | 99,47 | 98,50 |
| Sep-22 | 99,46 | 98,50 |
| Oct-22 | 99,47 | 98,50 |
| Nov-22 | 99,45 | 98,50 |
| Dec-22 | 99,36 | 98,50 |

This table shows CCT drinking water quality compliance according to the South African National Standard 241:2015. Compliance, measured against all prescribed chemical and microbiological components, consistently exceeds the very high CCT target of 98.5%. (Overall compliance percentages of continuous sampling and analysis are released on a monthly basis.