



Headline Statistics

<p>WCWSS DAM STORAGE (%)</p> <p>67.7</p>	<p>WEEKLY DAM LEVEL CHANGE (%)</p> <p>-2.00</p>	<p>AVERAGE TOTAL DAILY WATER USE (MLD)</p> <p>925</p>
---	--	--

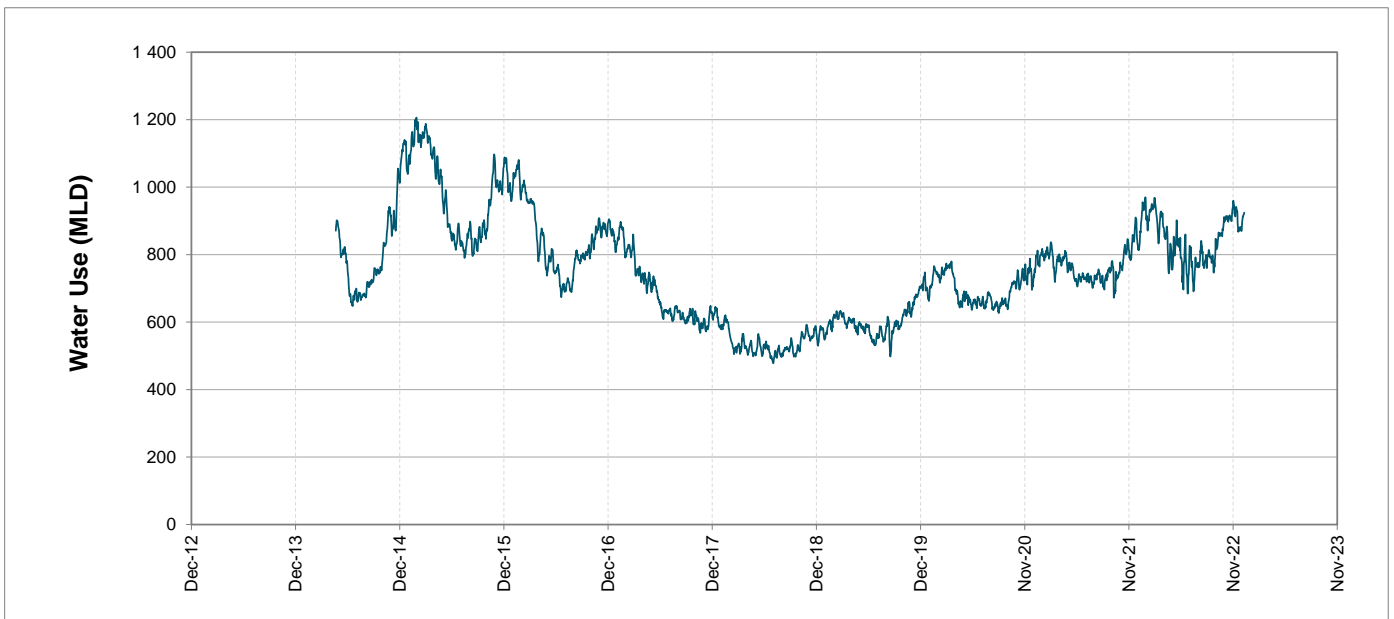
Water Resource Status

WATER RESOURCE STATUS	MEANING OF CURRENT STATUS
Early Drought Caution	There is a strong indication of a possible, but not confirmed, drought cycle developing or continuing from the record low rainfall levels between 2015-2017. It is important to continue using water wisely. There is no immediate cause for concern about water security in Cape Town. However, it is the responsible step to take now for Cape Town to collectively aim not to exceed a target of 950 millions of litres per day (MLD) to lower the risk of restrictions at a later stage.

Water Production from Different Sources

<p>MAJOR DAMS (MLD)</p> <p>903</p>	<p>MINOR DAMS (MLD)</p> <p>19</p>	<p>GROUND WATER AND SPRINGS (MLD)</p> <p>3</p>
---	--	---

Overall Water Usage Trend (2010 - Present)



WCWSS means Western Cape Water Supply System

MLD means million litres per day

More information on Water Saving and Restrictions is available on the City of Cape Town's 'ThinkWater' website

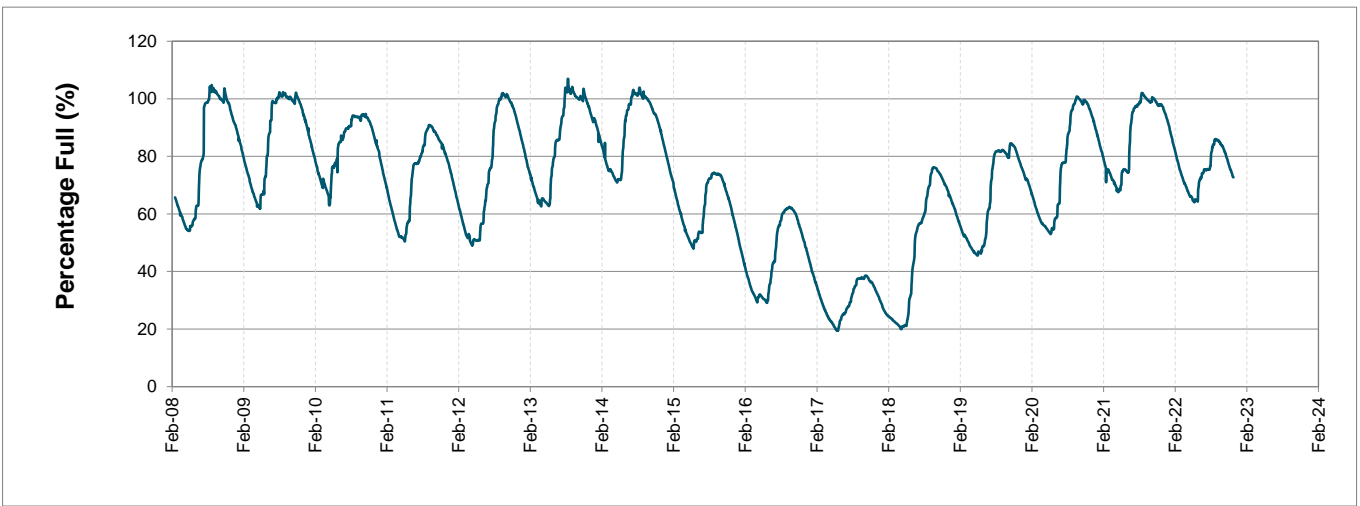
Water Stored in Major Dams (WCWSS)

Overall Percentage Full **67.7%**

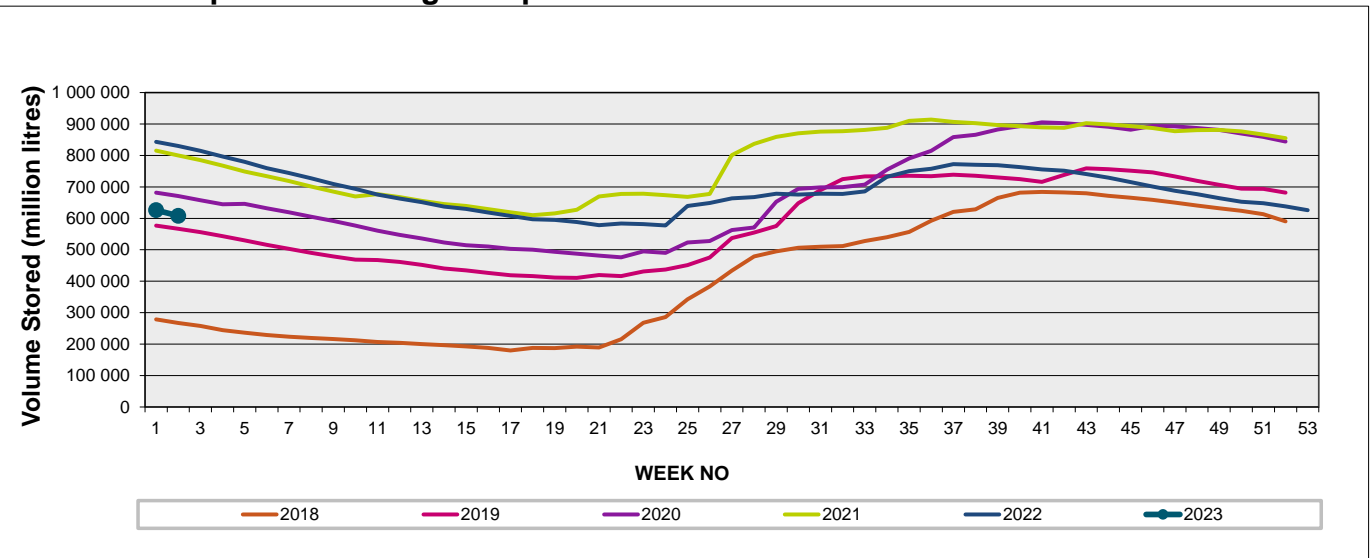
Weekly Change **-2.0%**

MAJOR DAMS (WCWSS)	STORAGE						
	CAPACITY	%	%	%	%	%	%
	MI	09 January 2023	Previous week	2022	2021	2020	2019
BERG RIVER	130 010	84.0	85.7	94.0	90.7	89.3	87.5
STEENBRAS LOWER	33 517	69.0	72.2	86.9	85.1	82.0	65.1
STEENBRAS UPPER	31 767	94.3	95.2	96.3	70.6	99.7	69.7
THEEWATERSKLOOF	480 188	64.3	66.3	94.7	92.0	65.7	49.4
VOËLVLEI	164 095	54.6	56.9	89.4	85.3	78.2	81.9
WEMMERSHOEK	58 644	80.6	82.1	83.8	90.0	78.3	75.7
TOTAL STORED	898 221	608 019	625 942	832 498	803 603	665 167	573 660
% STORAGE		67.7%	69.7%	92.7%	89.5%	74.1%	63.9%

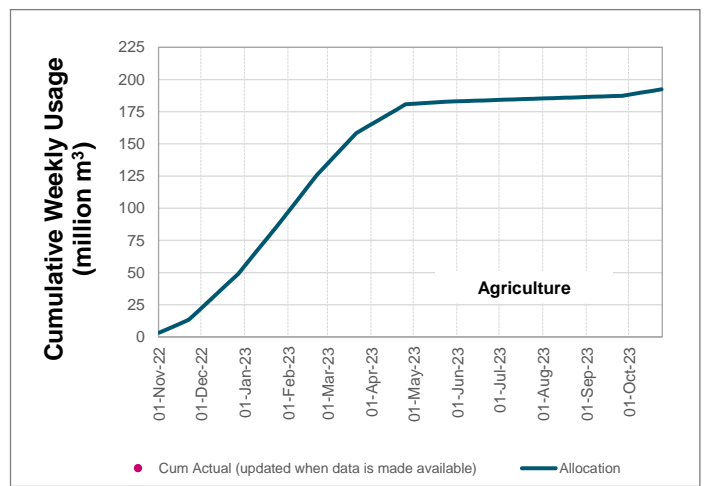
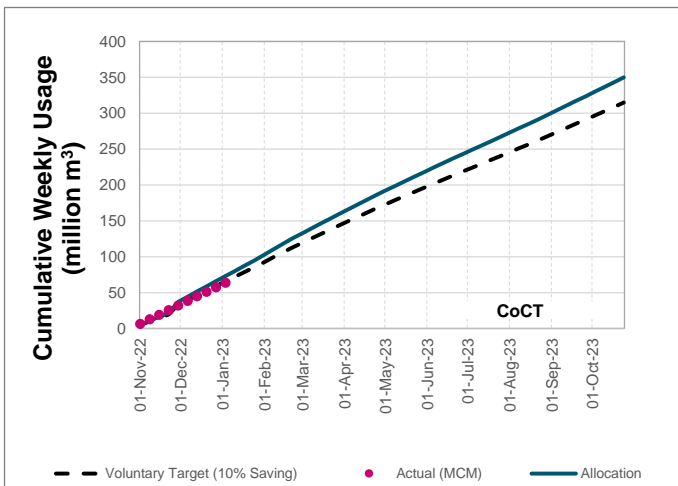
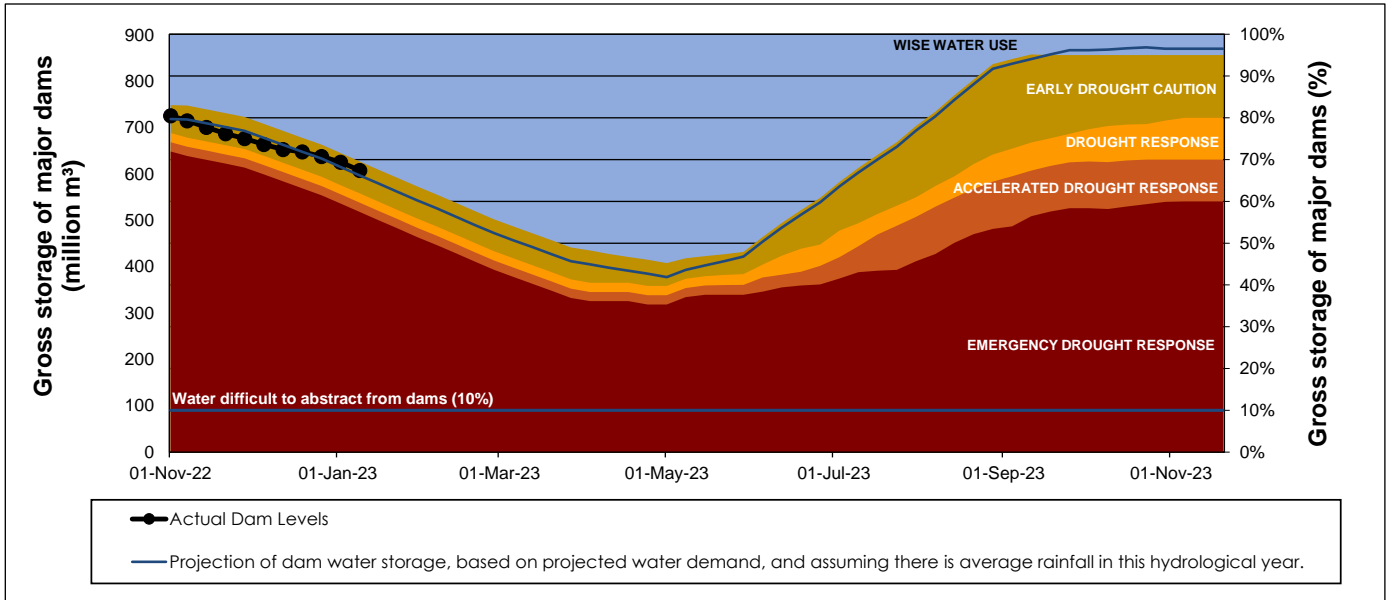
WCWSS Storage Record (2008 - Present)



WCWSS Comparative Storage Graph



Projected WCWSS Dam Storage Levels



Water Stored in Minor Dams

Overall Percentage Full **53.1**

Weekly Change **-0.54**

MINOR DAMS	STORAGE						
	CAPACITY	%	%	%	%	%	%
	MI	09 January 2023	Previous week	2022	2021	2020	2019
ALEXANDRA (Table Mountain)	126	53.2	54.7	85.8	56.9	45.6	49.0
DE VILLIERS (Table Mountain)	243	80.5	80.7	60.8	60.5	98.8	45.2
HELY-HUTCHINSON (Table Mount)	925	21.2	34.1	43.2	39.9	64.9	98.6
KLEINPLAATS (Simon's Town)	1 368	44.6	45.8	81.2	84.2	69.4	76.6
LAND-EN-ZEEZICHT (Helderberg)	451	86.4	85.4	93.5	91.3	83.8	98.4
LEWIS GAY (Simon's Town)	182	43.0	53.2	78.8	58.4	17.7	46.8
VICTORIA (Table Mountain)	128	85.4	86.8	62.2	91.2	90.8	85.4
WOODHEAD (Table Mountain)	954	72.2	58.9	80.4	78.4	77.6	77.8
Total Stored	4 377	2322.9	2346.6	3140.7	3082.6	3087.1	3480.6
Percentages stored		53.1	53.6	71.8	70.4	70.5	79.5

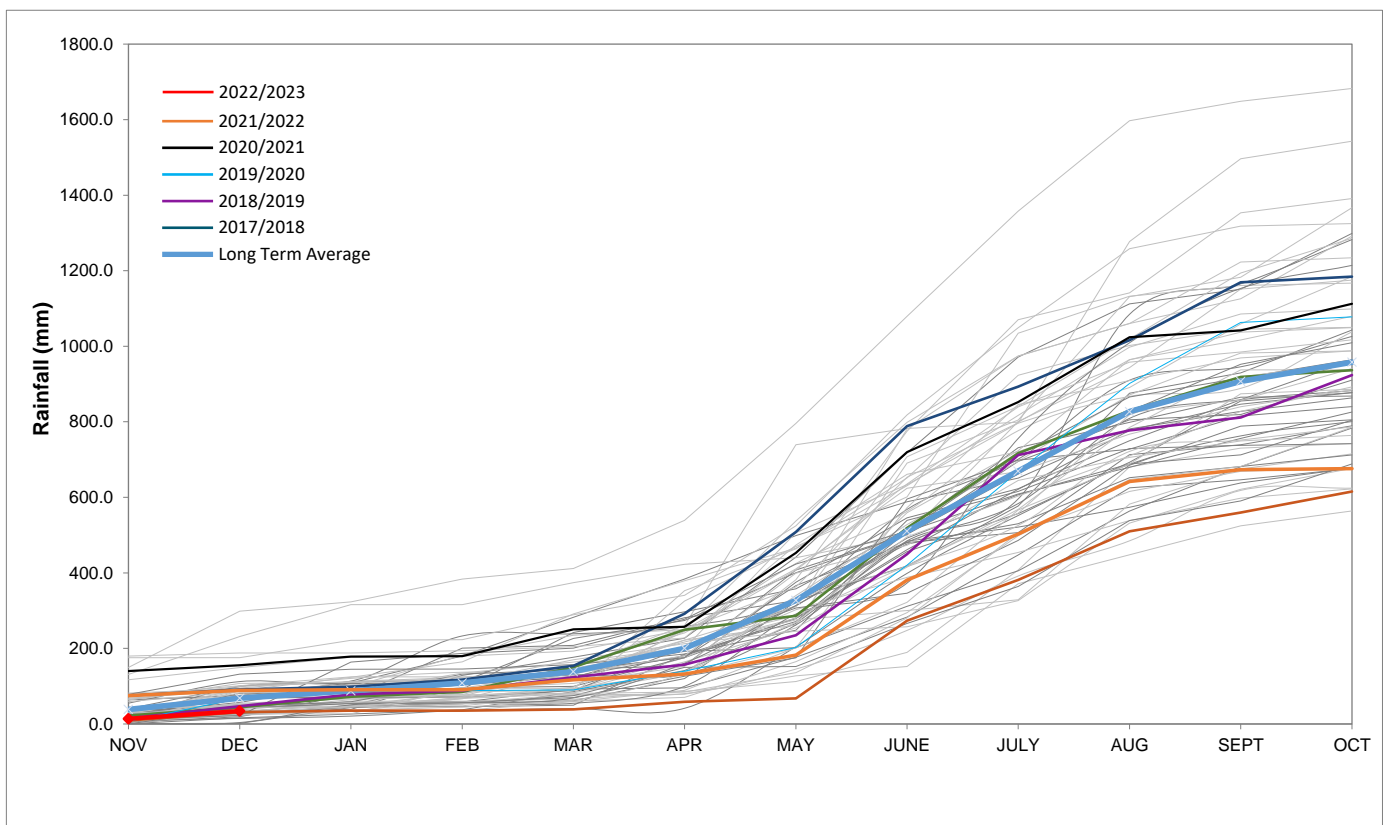
Rainfall Recorded

RAINFALL (mm)	02-Jan	03-Jan	04-Jan	05-Jan	06-Jan	07-Jan	08-Jan	Jan	
								Total*	LT Average
Blackheath Upper	0.0	0.0	0.0	1.0	0.0	0.0	0.0	1.0	15.3
Brooklands	0.0	0.0	0.0	0.0	0.0	0.0	0.0	0.0	27.7
Newlands	0.0	0.0	0.0	0.0	0.0	0.0	0.0	0.0	37.4
Steenbras	0.0	0.2	0.0	0.0	0.0	0.0	0.0	0.2	29.5
Table Mountain (Woodhead)	0.0	0.0	4.0	0.0	0.0	0.0	0.0	4.0	52.7
Theewaterskloof	0.0	0.0	29.0	5.0	0.0	0.0	0.0	34.0	24.9
Tygerberg	0.0	0.0	0.0	0.0	0.0	0.0	0.0	0.0	13.0
Voëlvlei	0.0	0.0	0.0	0.0	0.0	0.0	0.0	0.0	13.2
Wemmershoek	0.0	0.0	0.0	0.0	0.0	0.0	0.0	0.0	20.6
Wynberg	0.0	0.0	0.0	0.0	0.0	0.0	0.0	0.0	21.2

Notes: *Total/cummulative rainfall for month indicated above
LT: Long Term

Accumulated Monthly Rainfall at Wemmershoek

Note: Wemmershoek station used due to long record and mountainous location



Drinking Water Quality

SAMPLE PASS RATE

Month	Water Quality Compliance (%)	Target (%)
Aug-21	99.12	98
Sep-21	99.09	98
Oct-21	99.11	98
Nov-21	99.11	98
Dec-21	99.09	98
Jan-22	99.04	98
Feb-22	99.04	98
Mar-22	98.99	98
Apr-22	98.96	98
May-22	98.90	98
Jun-22	98.96	98
Jul-22	99.46	98.50
Aug-22	99.47	98.50
Sep-22	99.46	98.50
Oct-22	99.47	98.50
Nov-22	99.45	98.50

This table shows CCT drinking water quality compliance according to the South African National Standard 241:2015. Compliance, measured against all prescribed chemical and microbiological components, consistently exceeds the very high CCT target of 98.5%. (Overall compliance percentages of continuous sampling and analysis are released on a monthly basis.