



Headline Statistics

<p>WCWSS DAM STORAGE (%)</p> <p>72.2</p>	<p>WEEKLY DAM LEVEL CHANGE (%)</p> <p>-0.50</p>	<p>AVERAGE TOTAL DAILY WATER USE (MLD)</p> <p>857</p>
---	--	--

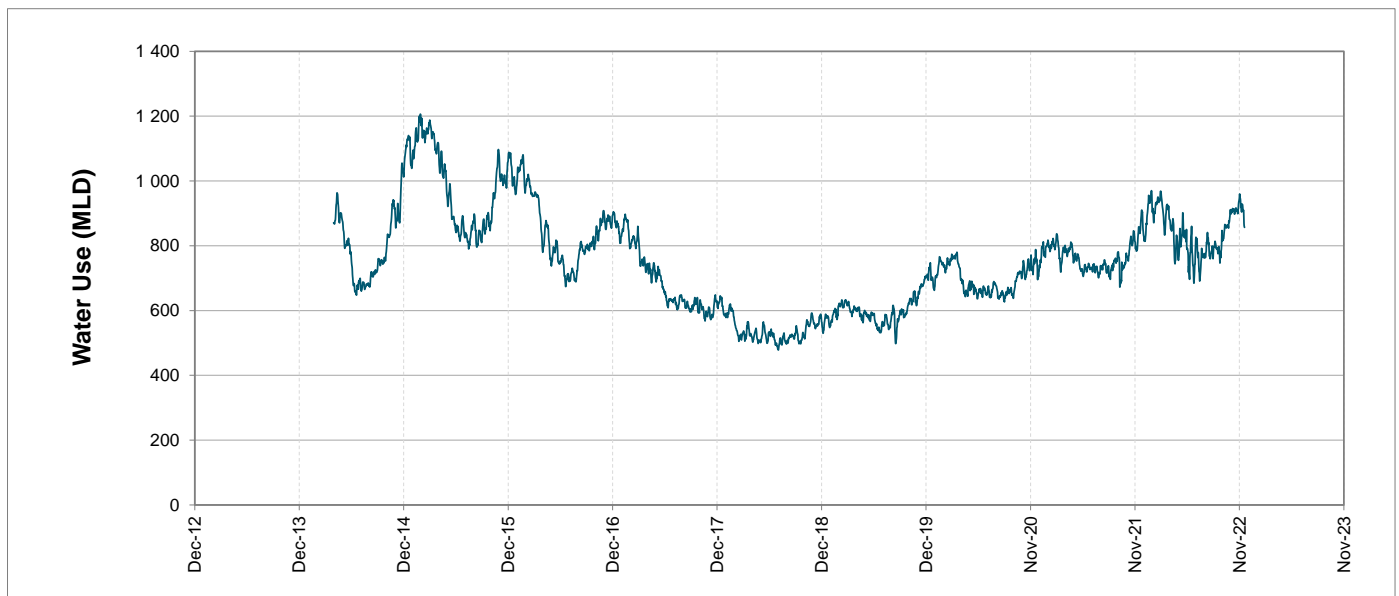
Water Resource Status

WATER RESOURCE STATUS	MEANING OF CURRENT STATUS
Early Drought Caution	There is a strong indication of a possible, but not confirmed, drought cycle developing or continuing from the record low rainfall levels between 2015-2017. It is important to continue using water wisely. There is no immediate cause for concern about water security in Cape Town. However, it is the responsible step to take now for Cape Town to collectively aim not to exceed a target of 950 millions of litres per day (MLD) to lower the risk of restrictions at a later stage.

Water Production from Different Sources

<p>MAJOR DAMS (MLD)</p> <p>834</p>	<p>MINOR DAMS (MLD)</p> <p>19</p>	<p>GROUND WATER AND SPRINGS (MLD)</p> <p>4</p>
---	--	---

Overall Water Usage Trend (2010 - Present)



WCWSS means Western Cape Water Supply System

MLD means million litres per day

More information on Water Saving and Restrictions is available on the City of Cape Town's 'ThinkWater' website

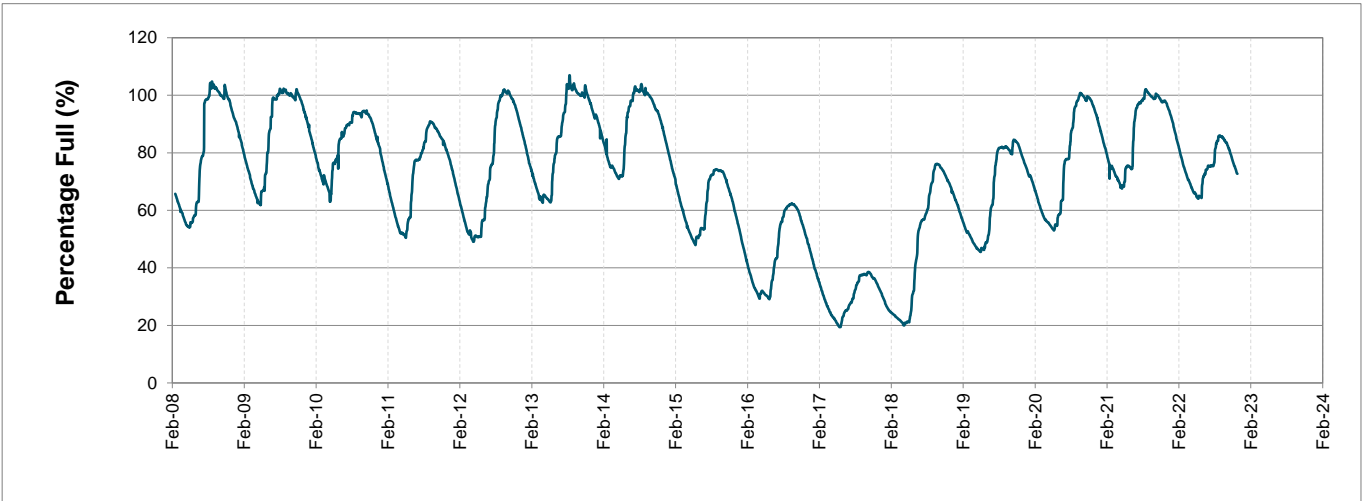
Water Stored in Major Dams (WCWSS)

Overall Percentage Full **72.2%**

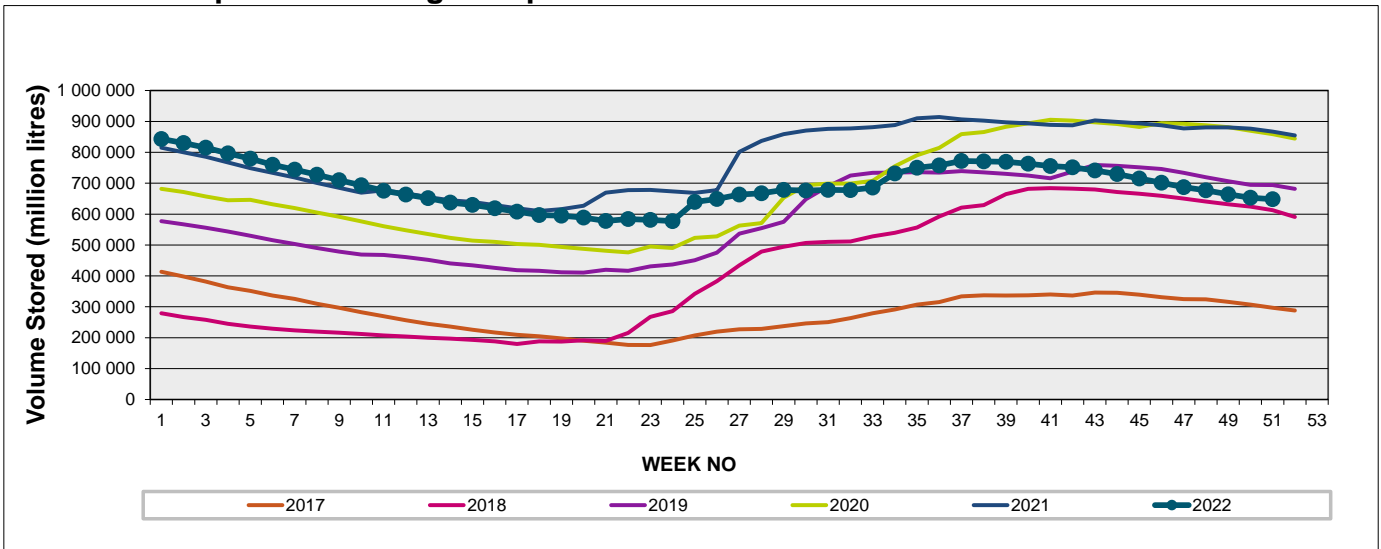
Weekly Change **-0.5%**

MAJOR DAMS (WCWSS)	STORAGE						
	CAPACITY	%	%	%	%	%	%
	MI	19 December 2022	Previous week	2021	2020	2019	2018
BERG RIVER	130 010	88.9	88.6	98.8	96.0	94.0	92.7
STEENBRAS LOWER	33 517	74.7	75.2	92.0	91.6	87.3	71.9
STEENBRAS UPPER	31 767	95.8	94.0	96.9	79.5	100.6	70.9
THEEWATERSKLOOF	480 188	69.0	70.2	98.6	96.3	69.1	52.6
VOËLVLEI	164 095	58.5	58.3	94.4	90.9	82.8	87.1
WEMMERSHOEK	58 644	85.0	85.1	89.3	95.1	83.9	81.1
TOTAL STORED	898 221	648 282	653 069	870 919	848 361	700 386	610 397
% STORAGE		72.2%	72.7%	97.0%	94.4%	78.0%	68.0%

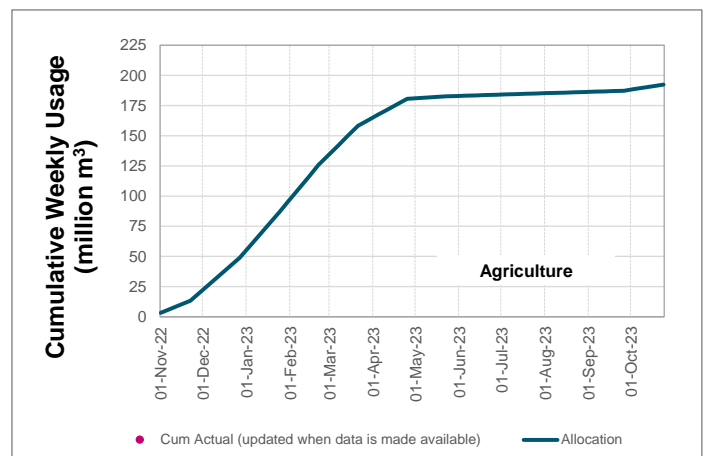
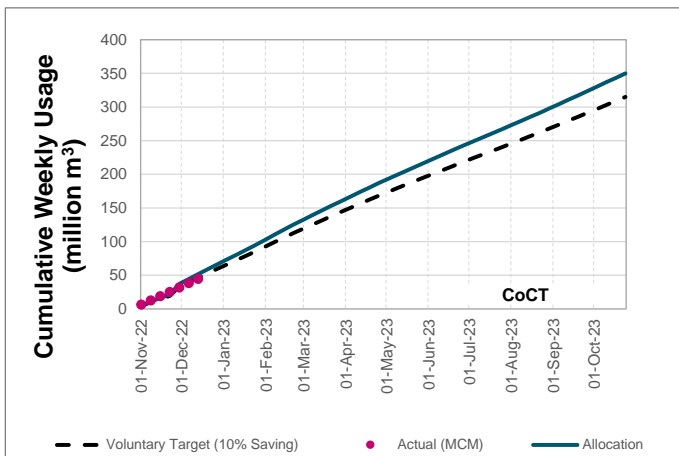
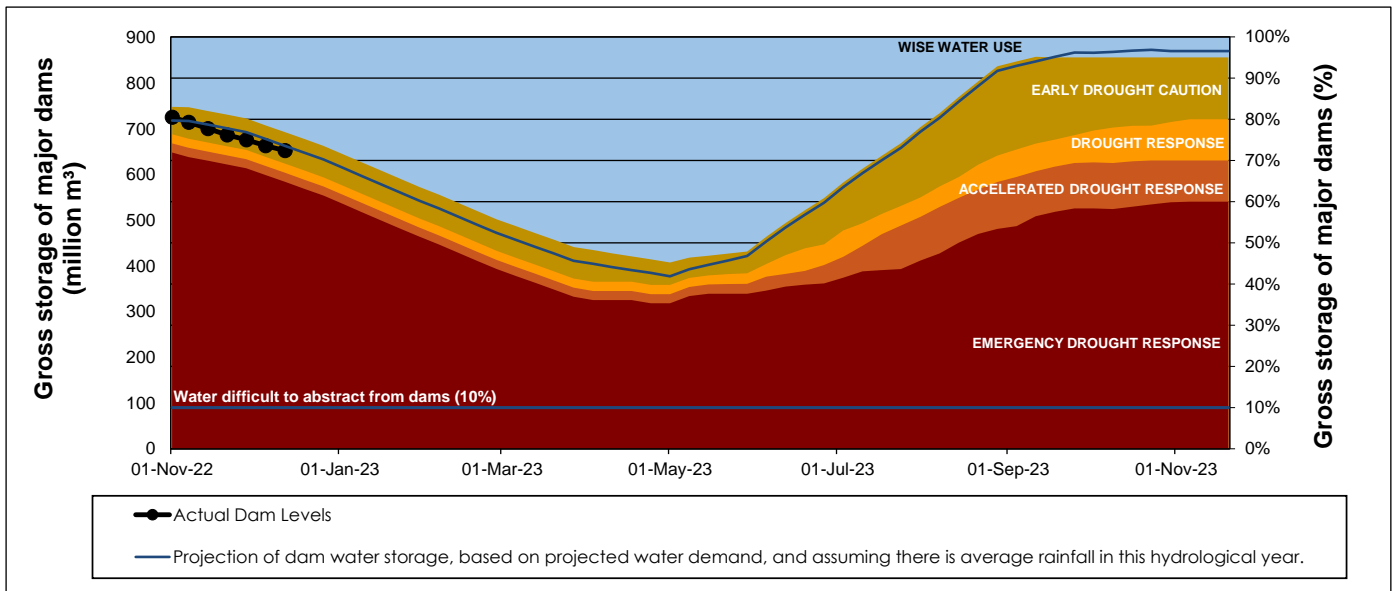
WCWSS Storage Record (2008 - Present)



WCWSS Comparative Storage Graph



Projected WCWSS Dam Storage Levels



Water Stored in Minor Dams

Overall Percentage Full **55.4**

Weekly Change **-0.06**

MINOR DAMS	STORAGE						
	CAPACITY	%	%	%	%	%	%
	MI	19 December 2022	Previous week	2021	2020	2019	2018
ALEXANDRA (Table Mountain)	126	57.0	59.4	82.8	65.0	52.1	55.3
DE VILLIERS (Table Mountain)	243	80.0	84.6	56.0	78.8	99.0	63.7
HELY-HUTCHINSON (Table Mount)	925	37.7	36.8	82.3	59.8	96.8	99.7
KLEINPLAATS (Simon's Town)	1 368	48.7	51.0	93.6	93.6	76.4	82.8
LAND-EN-ZEEZICHT (Helderberg)	451	81.7	77.4	86.0	95.8	90.9	100.0
LEWIS GAY (Simon's Town)	182	67.7	67.0	67.0	72.3	27.3	68.0
VICTORIA (Table Mountain)	128	89.7	87.8	74.3	93.1	92.7	89.3
WOODHEAD (Table Mountain)	954	58.2	57.3	62.6	60.2	72.7	75.4
Total Stored	4 377	2424.1	2426.7	3437.8	3317.8	3487.6	3649.1
Percentages stored		55.4	55.4	78.5	75.8	79.7	83.4

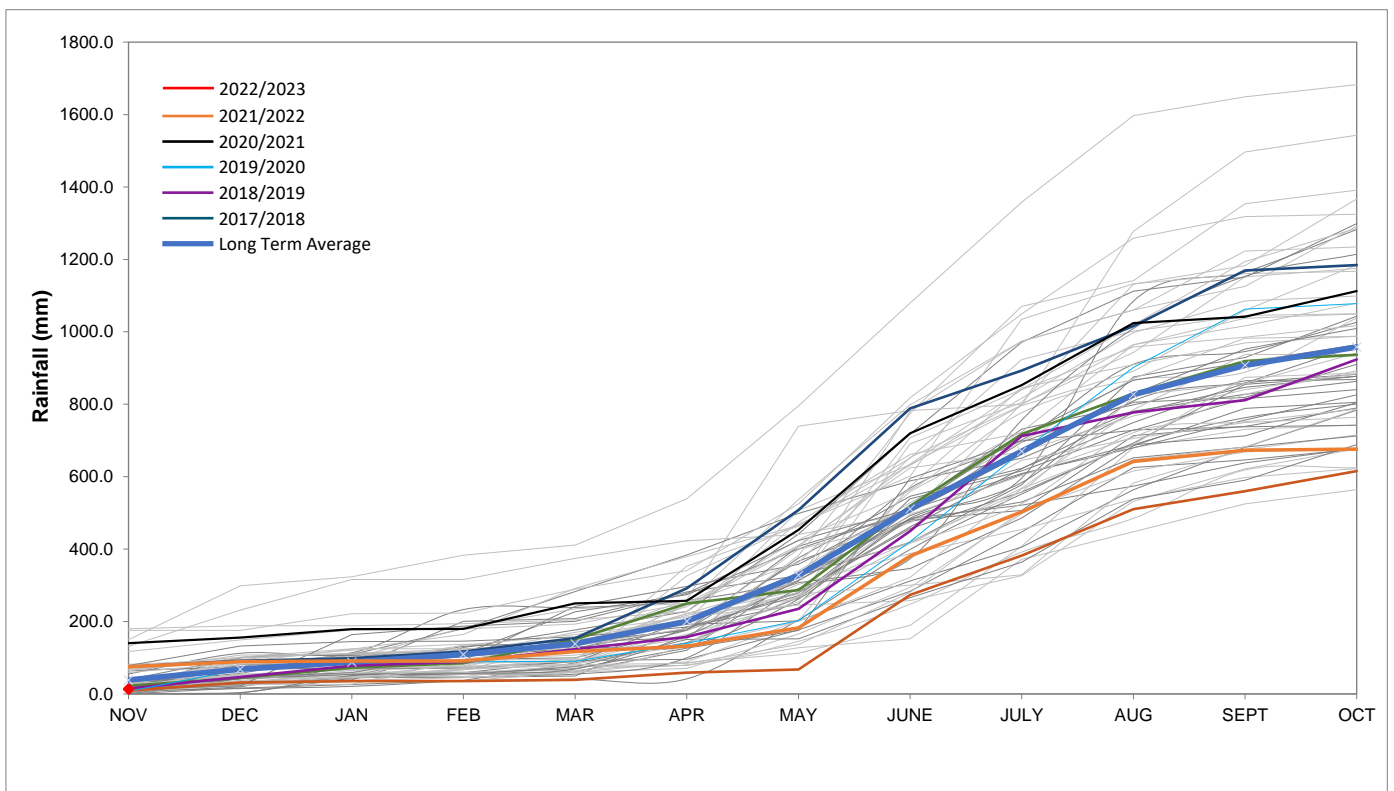
Rainfall Recorded

RAINFALL (mm)	12-Dec	13-Dec	14-Dec	15-Dec	16-Dec	17-Dec	18-Dec	Dec	
								Total*	LT Average
Blackheath Upper	26.0	0.0	0.0	0.0	8.0	0.0	0.0	56.0	13.0
Brooklands	2.0	0.0	0.0	0.0	30.0	0.0	0.0	51.0	26.9
Newlands	3.0	0.0	0.0	0.0	15.0	0.0	0.0	38.2	47.9
Steenbras	67.0	0.0	0.0	0.0	14.0	0.0	0.0	89.5	36.4
Table Mountain (Woodhead)	5.0	0.0	0.0	0.0	0.0	0.0	0.0	30.0	63.0
Theewaterskloof	23.0	0.0	0.0	0.0	29.0	3.0	0.0	75.5	20.3
Tygerberg	9.6	0.0	0.0	0.0	20.0	0.0	0.0	49.1	10.2
Voëlvlei	47.0	0.0	0.0	0.0	18.0	0.0	0.0	83.0	13.0
Wemmershoek	18.5	0.0	0.0	0.0	14.0	0.0	0.0	53.9	26.7
Wynberg	4.5	0.0	0.0	0.0	15.0	0.0	0.0	40.9	22.0

Notes: *Total/cummulative rainfall for month indicated above
LT: Long Term

Accumulated Monthly Rainfall at Wemmershoek

Note: Wemmershoek station used due to long record and mountainous location



Drinking Water Quality

SAMPLE PASS RATE

Month	Water Quality Compliance (%)	Target (%)
Jun-21	99.11	98
Jul-21	99.10	98
Aug-21	99.12	98
Sep-21	99.09	98
Oct-21	99.11	98
Nov-21	99.11	98
Dec-21	99.09	98
Jan-22	99.04	98
Feb-22	99.04	98
Mar-22	98.99	98
Apr-22	98.96	98
May-22	98.90	98
Jun-22	98.96	98
Jul-22	99.46	98.50
Aug-22	99.47	98.50

Notes:

This table shows CCT drinking water quality compliance according to the South African National Standard 241:2015. Compliance, measured against all prescribed chemical and microbiological components, consistently exceeds the very high CCT target of 98%. (Overall compliance percentages of continuous sampling and analysis are released on a monthly basis.