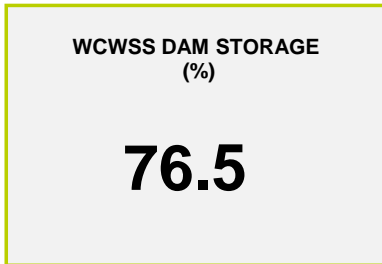
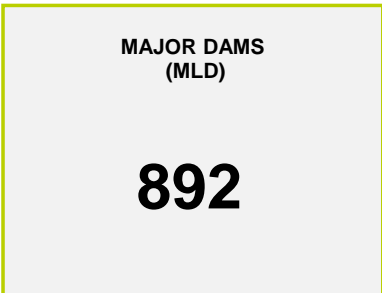




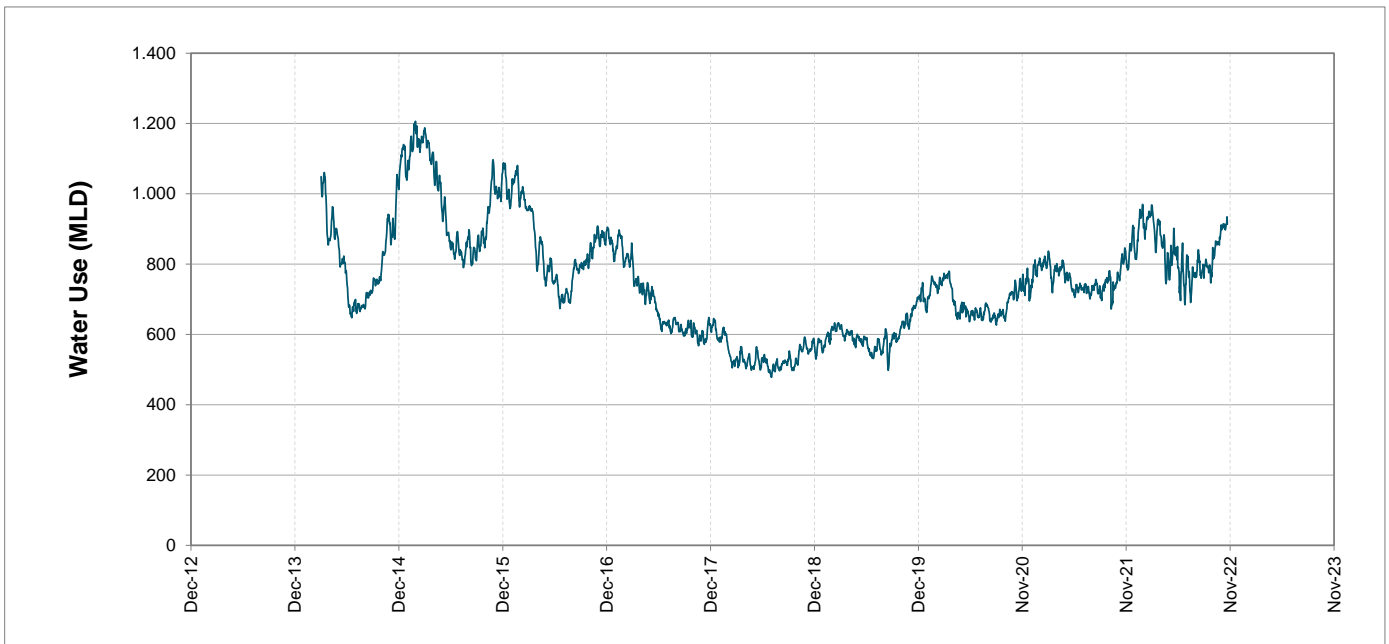
Headline Statistics



Water Production from Different Sources



Overall Water Usage Trend (2010 - Present)



WCWSS means Western Cape Water Supply System

MLD means million litres per day

More information on Water Saving and Restrictions is available on the City of Cape Town's 'ThinkWater' website

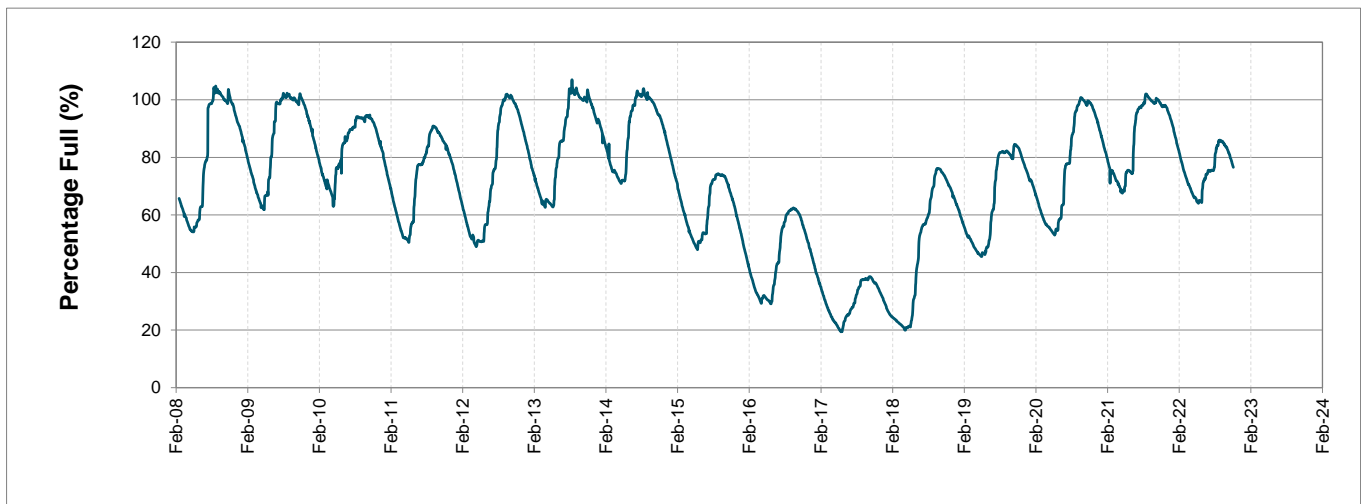
Water Stored in Major Dams (WCWSS)

Overall Percentage Full **76.5%**

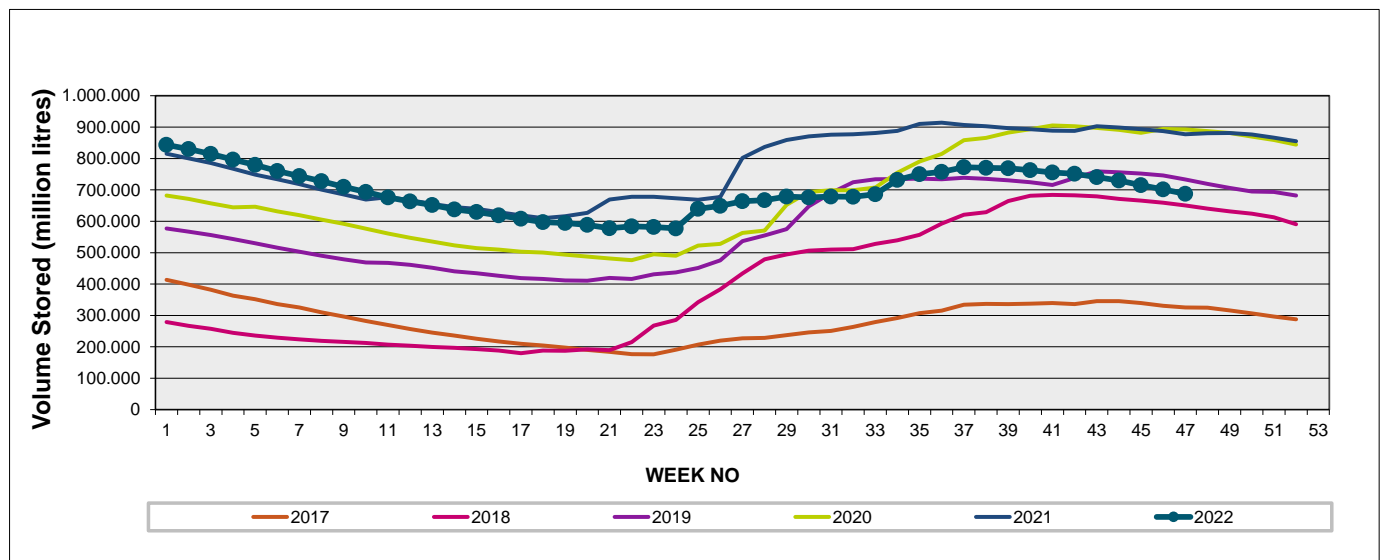
Weekly Change **-1.6%**

MAJOR DAMS (WCWSS)	STORAGE						
	CAPACITY	%	%	%	%	%	%
	MI	21 November 2022	Previous week	2021	2020	2019	2018
BERG RIVER	130.010	93.3	94.5	99.0	99.9	99.6	97.1
STEENBRAS LOWER	33.517	80.8	82.7	91.2	95.1	95.1	81.1
STEENBRAS UPPER	31.767	94.8	95.9	98.3	87.3	93.2	62.7
THEEWATERSKLOOF	480.188	74.0	75.6	99.1	100.6	74.6	56.3
VOËLVLEI	164.095	62.8	64.8	96.8	96.1	89.0	92.6
WEMMERSHOEK	58.644	86.2	86.6	92.5	99.6	91.9	87.9
TOTAL STORED	898.221	687.432	701.272	879.301	888.910	749.264	647.176
% STORAGE		76.5%	78.1%	97.9%	99.0%	83.4%	72.1%

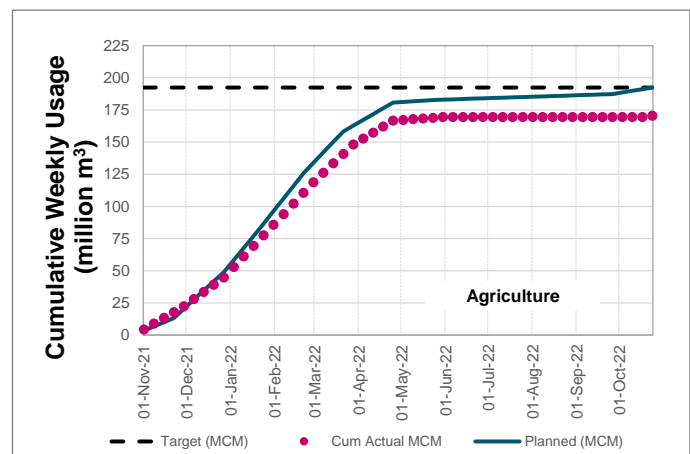
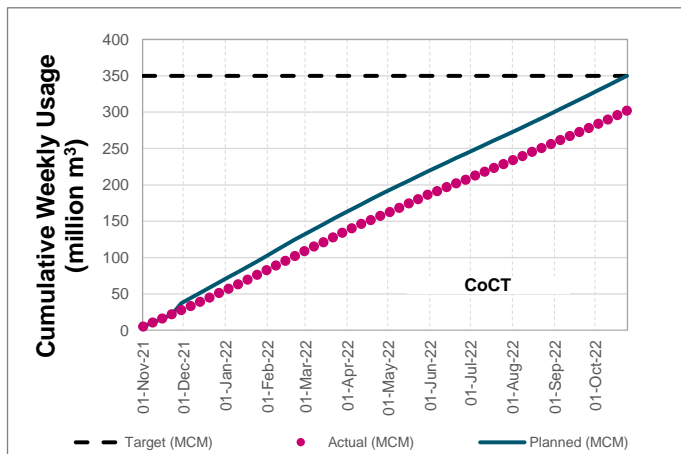
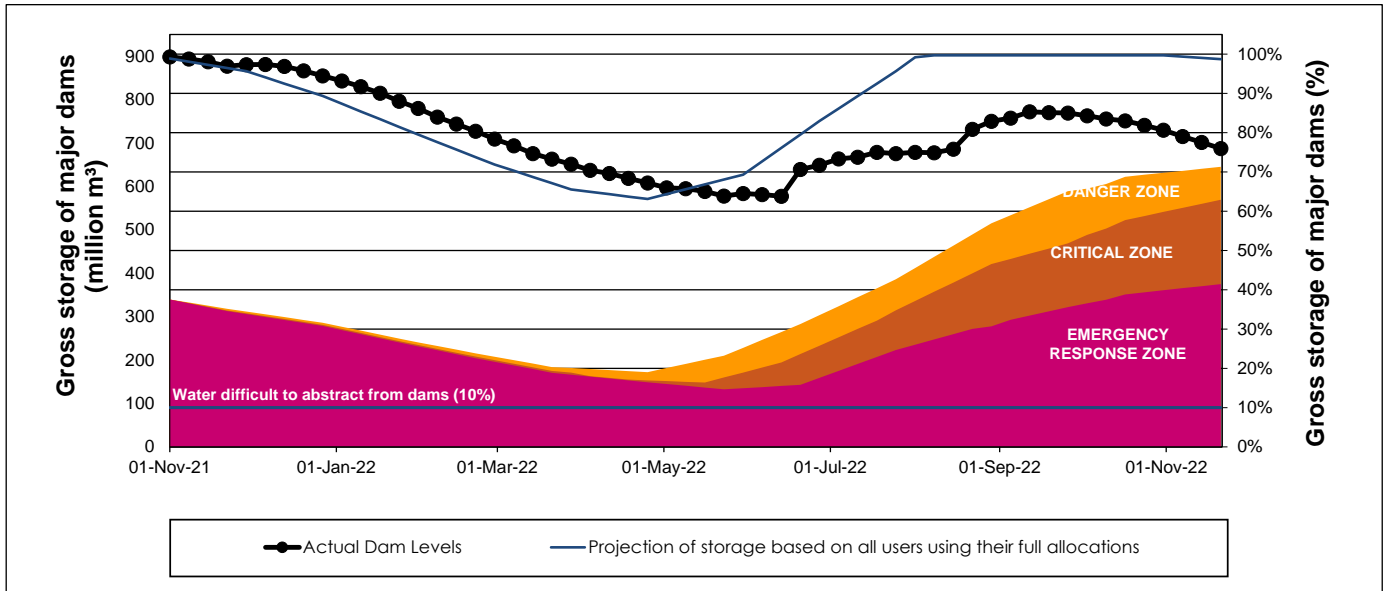
WCWSS Storage Record (2008 - Present)



WCWSS Comparative Storage Graph



WCWSS Dam Storage and Water Use Tracking



Water Stored in Minor Dams

Overall Percentage Full **61.2**

Weekly Change **-2.43**

MINOR DAMS	STORAGE						
	CAPACITY	%	%	%	%	%	%
	MI	21 November 2022	Previous week	2021	2020	2019	2018
ALEXANDRA (Table Mountain)	126	65.6	69.1	56.7	78.5	62.9	65.7
DE VILLIERS (Table Mountain)	243	84.2	84.3	56.9	98.1	99.0	84.0
HELY-HUTCHINSON (Table Mount)	925	41.8	61.4	84.7	85.5	99.2	96.4
KLEINPLAATS (Simon's Town)	1.368	58.0	60.6	95.8	98.9	83.6	89.3
LAND-EN-ZEEZICHT (Helderberg)	451	80.5	80.3	100.0	97.9	87.4	100.0
LEWIS GAY (Simon's Town)	182	60.5	57.3	84.8	84.8	56.7	82.9
VICTORIA (Table Mountain)	128	91.2	94.3	98.1	99.6	98.9	92.0
WOODHEAD (Table Mountain)	954	67.7	56.0	61.2	71.4	82.1	67.3
Total Stored	4.377	2678.6	2785.0	3569.8	3835.1	3747.0	3718.5
Percentages stored		61.2	63.6	81.6	87.6	85.6	85.0

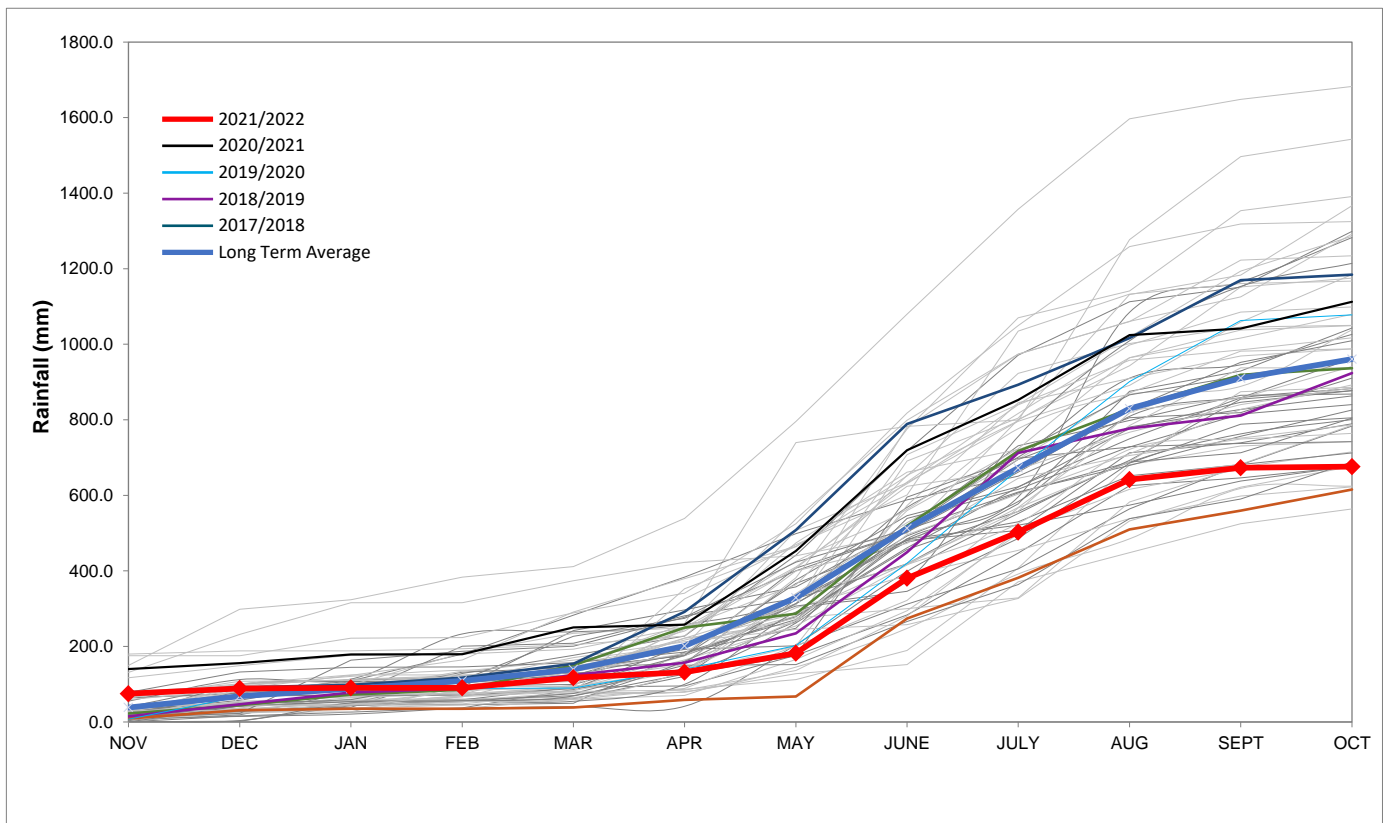
Rainfall Recorded

RAINFALL (mm)	14-Nov	15-Nov	16-Nov	17-Nov	18-Nov	19-Nov	20-Nov	Nov	
								Total*	LT Average
Blackheath Upper	0.0	0.0	0.0	0.0	0.0	0.0	0.0	2.0	27.1
Brooklands	0.0	0.0	0.0	0.0	0.0	0.0	0.0	3.0	50.8
Newlands	0.0	2.0	0.0	0.0	0.8	0.0	0.0	10.3	60.3
Steenbras	0.0	2.5	0.0	0.0	2.0	1.5	0.0	10.0	49.3
Table Mountain (Woodhead)	0.0	0.0	4.0	0.0	0.0	4.0	0.0	20.0	69.0
Theewaterskloof	0.0	0.0	0.0	0.0	0.0	0.0	0.0	1.8	36.4
Tygerberg	0.0	0.0	0.0	0.0	0.0	0.0	0.0	7.2	24.5
Voëlvei	0.0	1.0	0.0	0.0	0.0	0.0	0.0	1.0	29.0
Wemmershoek	0.0	0.0	0.0	0.0	0.5	0.0	0.0	10.6	39.8
Wynberg	0.0	0.0	0.0	0.0	0.0	0.0	0.0	6.1	44.9

Notes: *Total/cummulative rainfall for month indicated above
LT: Long Term

Accumulated Monthly Rainfall at Wemmershoek

Note: Wemmershoek station used due to long record and mountainous location



Drinking Water Quality

SAMPLE PASS RATE

Month	Water Quality Compliance (%)	Target (%)
Aug-21	99.12	98
Sep-21	99.09	98
Oct-21	99.11	98
Nov-21	99.11	98
Dec-21	99.09	98
Jan-22	99.04	98
Feb-22	99.04	98
Mar-22	98.99	98
Apr-22	98.96	98
May-22	98.90	98
Jun-22	98.96	98
Jul-22	99.46	99
Aug-22	99.47	99
Sep-22	99.46	98.50
Oct-22	99.47	98.50

Notes:

This table shows CCT drinking water quality compliance according to the South African National Standard 241:2015. Compliance, measured against all prescribed chemical and microbiological components, consistently exceeds the very high CCT target of 98%. (Overall compliance percentages of continuous sampling and analysis are released on a monthly basis.