



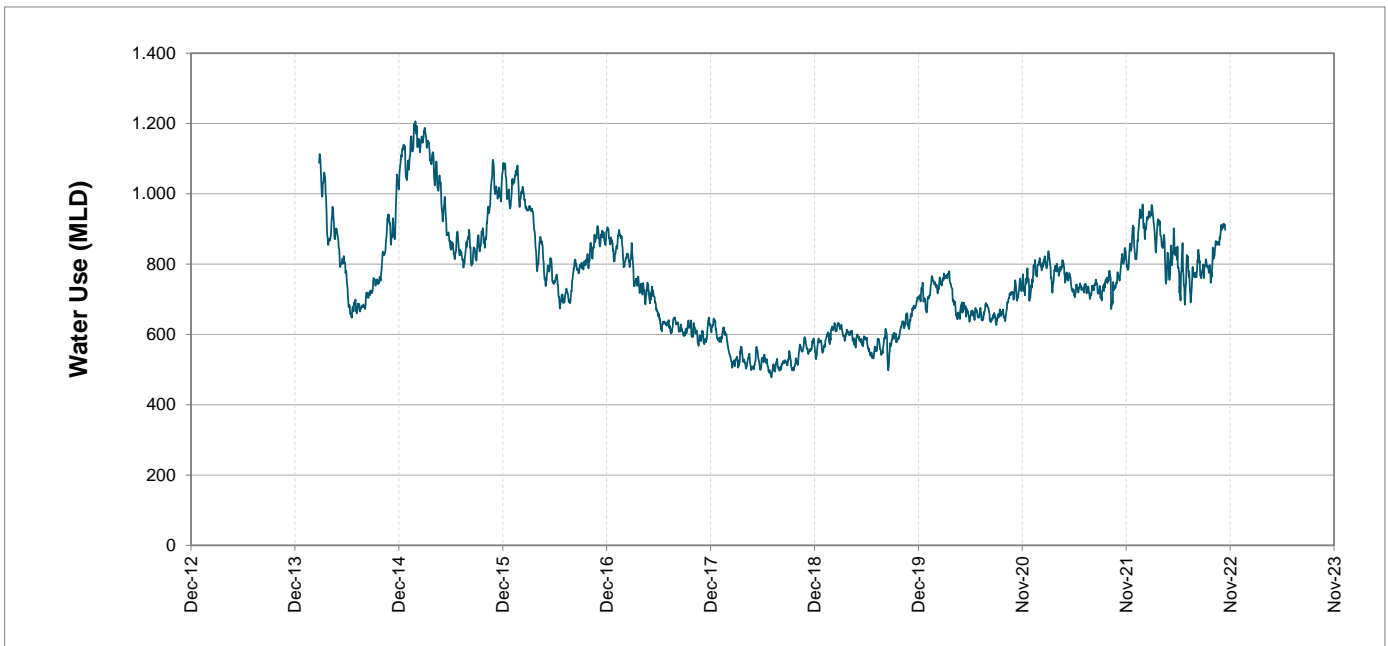
Headline Statistics



Water Production from Different Sources



Overall Water Usage Trend (2010 - Present)



WCWSS means Western Cape Water Supply System

MLD means million litres per day

More information on Water Saving and Restrictions is available on the City of Cape Town's 'ThinkWater' website

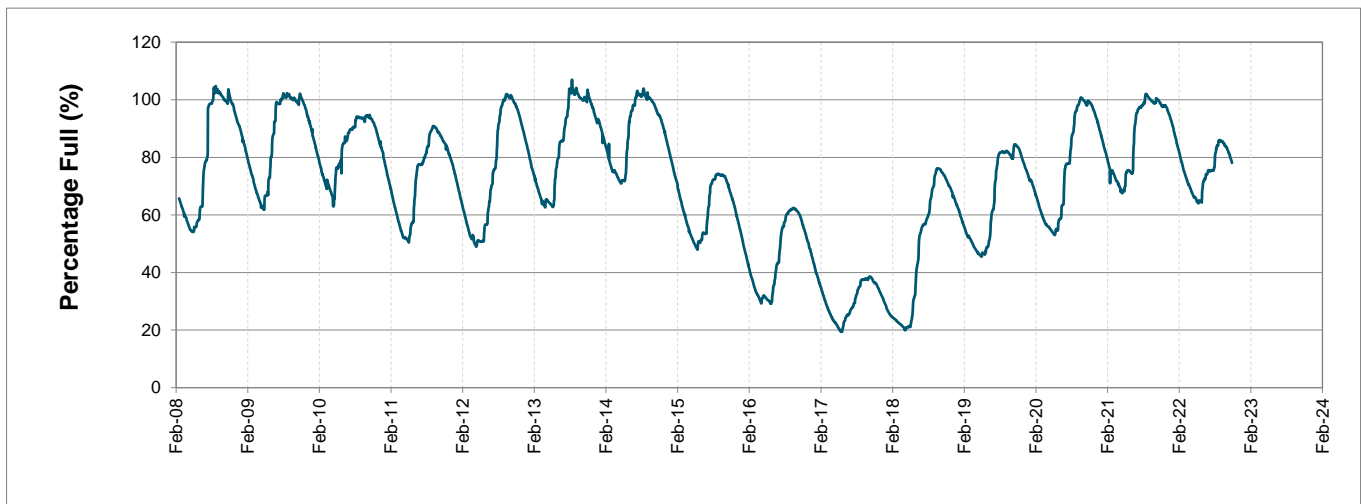
Water Stored in Major Dams (WCWSS)

Overall Percentage Full **78.1%**

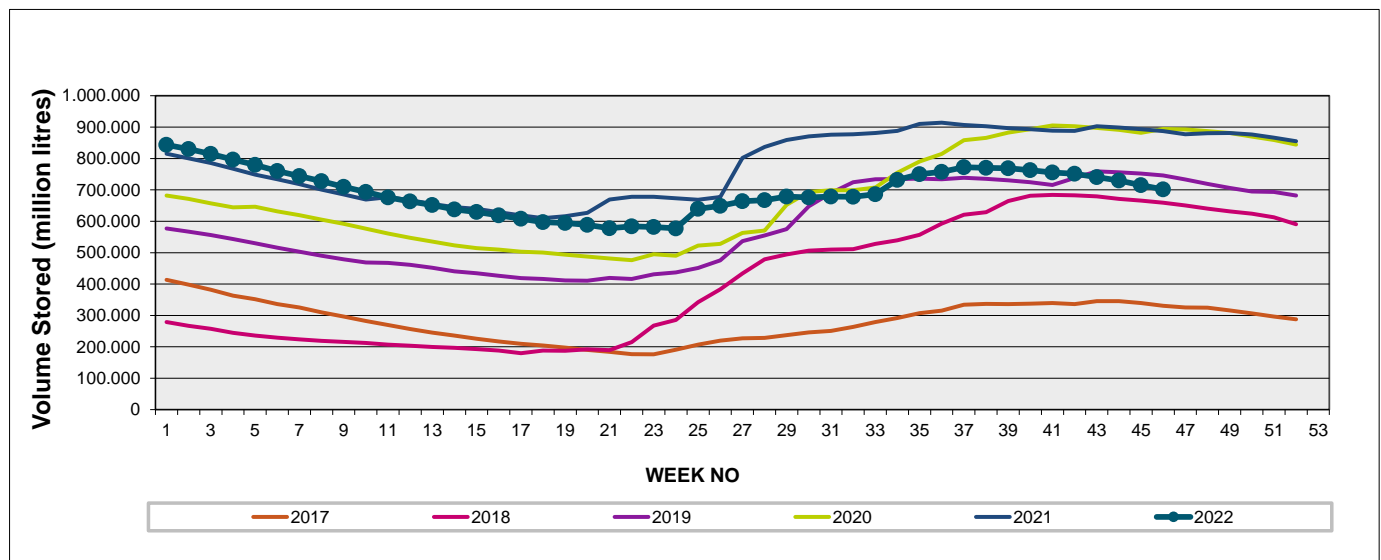
Weekly Change **-1.5%**

MAJOR DAMS (WCWSS)	STORAGE						
	CAPACITY	%	%	%	%	%	%
	MI	14 November 2022	Previous week	2021	2020	2019	2018
BERG RIVER	130.010	94.5	95.7	100.0	100.2	99.9	98.2
STEENBRAS LOWER	33.517	82.7	83.4	92.6	96.3	96.7	83.4
STEENBRAS UPPER	31.767	95.9	96.4	97.9	90.2	93.1	66.0
THEEWATERSKLOOF	480.188	75.6	77.7	100.2	101.1	74.9	57.0
VOËLVLEI	164.095	64.8	65.9	97.4	96.2	89.8	93.8
WEMMERSHOEK	58.644	86.6	86.9	94.0	100.0	93.4	89.6
TOTAL STORED	898.221	701.272	715.294	888.251	893.058	753.750	656.704
% STORAGE		78.1%	79.6%	98.9%	99.4%	83.9%	73.1%

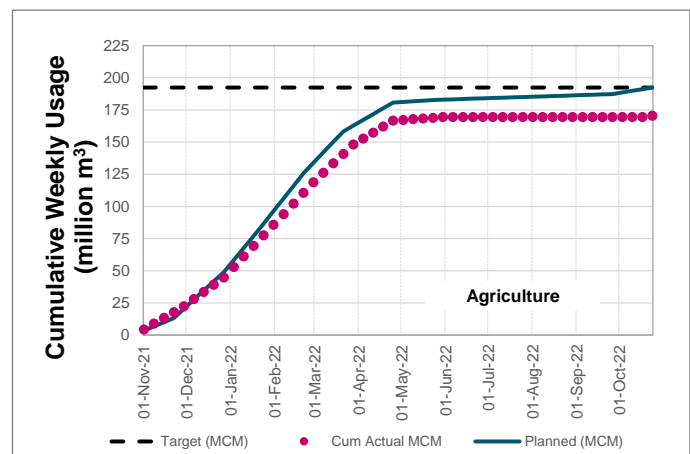
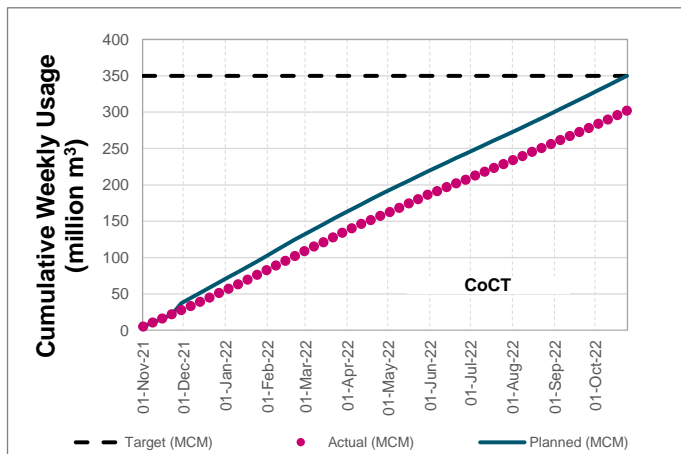
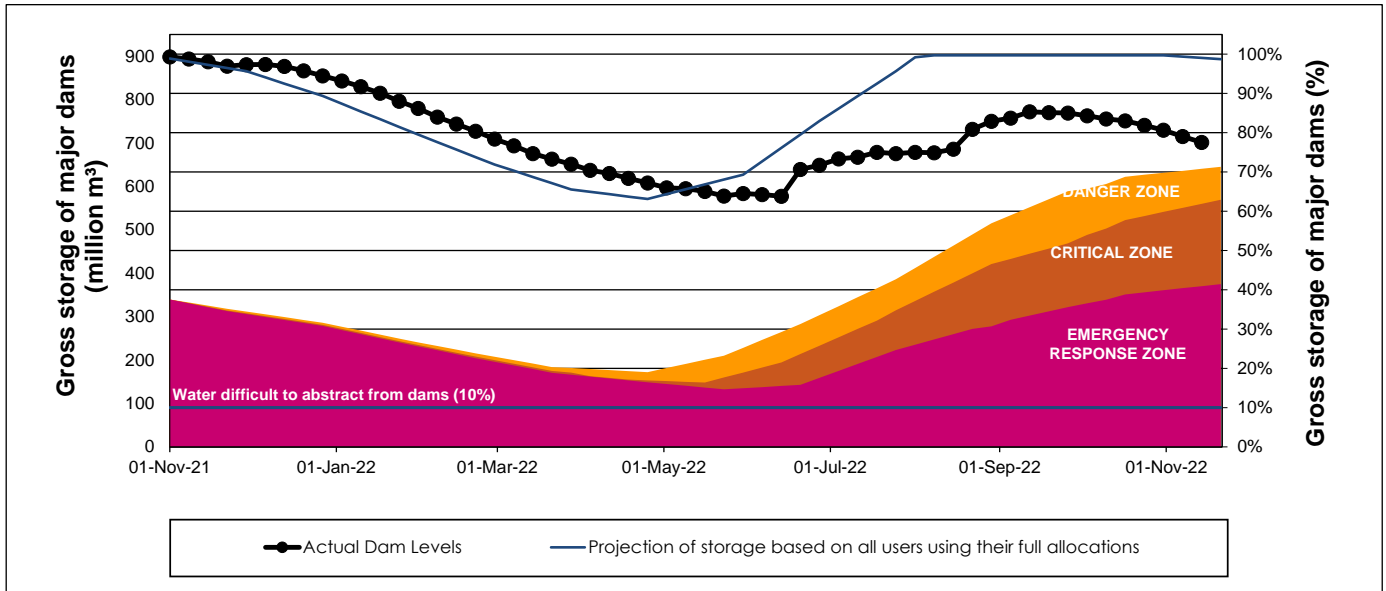
WCWSS Storage Record (2008 - Present)



WCWSS Comparative Storage Graph



WCWSS Dam Storage and Water Use Tracking



Water Stored in Minor Dams

Overall Percentage Full **63.6**

Weekly Change **-1.60**

MINOR DAMS	STORAGE						
	CAPACITY	%	%	%	%	%	%
	MI	14 November 2022	Previous week	2021	2020	2019	2018
ALEXANDRA (Table Mountain)	126	69.1	68.9	58.7	80.6	69.6	68.6
DE VILLIERS (Table Mountain)	243	84.3	83.5	61.5	99.7	99.7	84.0
HELY-HUTCHINSON (Table Mount)	925	61.4	61.4	93.1	93.1	100.2	96.9
KLEINPLAATS (Simon's Town)	1.368	60.6	64.0	96.9	99.8	85.2	91.5
LAND-EN-ZEEZICHT (Helderberg)	451	80.3	79.3	100.0	97.3	86.8	99.7
LEWIS GAY (Simon's Town)	182	57.3	54.4	89.1	91.5	65.2	89.5
VICTORIA (Table Mountain)	128	94.3	94.3	99.3	99.6	100.8	92.7
WOODHEAD (Table Mountain)	954	56.0	60.0	57.9	73.5	80.2	67.2
Total Stored	4.377	2785.0	2854.8	3651.9	3951.9	3784.9	3764.0
Percentages stored		63.6	65.2	83.4	90.3	86.5	86.0

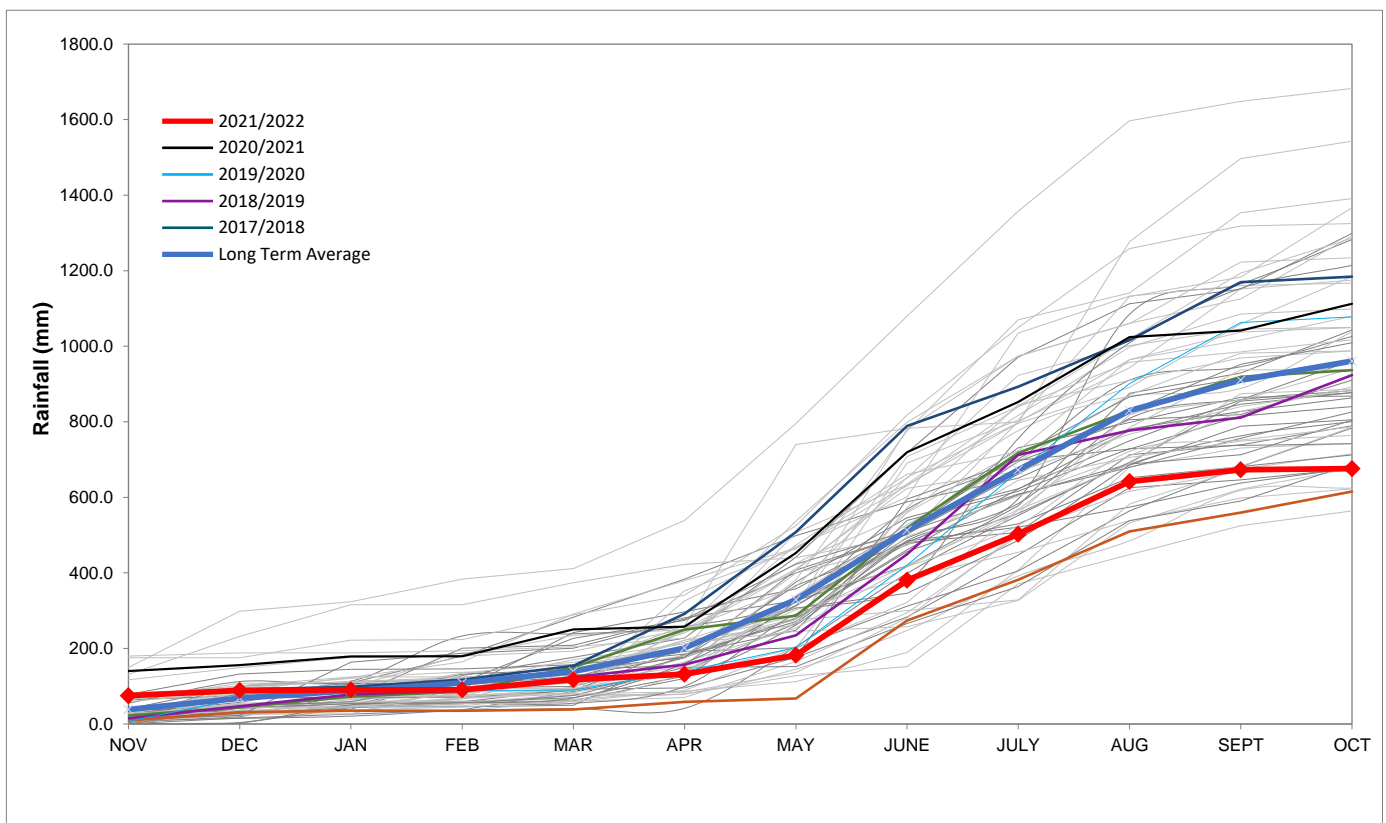
Rainfall Recorded

RAINFALL (mm)	07-Nov	08-Nov	09-Nov	10-Nov	11-Nov	12-Nov	13-Nov	Nov	
								Total*	LT Average
Blackheath Upper	0.0	0.0	0.0	0.0	0.0	0.0	0.0	2.0	27.1
Brooklands	0.0	0.0	0.0	0.0	0.0	0.0	0.0	3.0	50.8
Newlands	0.0	0.0	3.0	0.0	0.0	0.5	0.0	7.5	60.3
Steenbras	0.0	0.0	0.0	0.0	0.0	0.0	0.0	4.0	49.3
Table Mountain (Woodhead)	0.0	0.0	1.5	0.0	0.0	0.0	8.5	12.0	69.0
Theewaterskloof	0.0	0.0	0.0	0.0	0.0	0.8	0.0	1.8	36.4
Tygerberg	0.0	0.0	0.0	0.0	0.0	4.0	0.0	7.2	24.5
Voëlvei	0.0	0.0	0.0	0.0	0.0	0.0	0.0	0.0	29.0
Wemmershoek	0.0	0.0	0.0	0.0	0.0	3.0	0.0	10.1	39.8
Wynberg	0.0	0.0	0.0	0.0	0.0	0.0	0.0	6.1	44.9

Notes: *Total/cummulative rainfall for month indicated above
LT: Long Term

Accumulated Monthly Rainfall at Wemmershoek

Note: Wemmershoek station used due to long record and mountainous location



Drinking Water Quality

SAMPLE PASS RATE

Month	Water Quality Compliance (%)	Target (%)
Jul-21	99.10	98
Aug-21	99.12	98
Sep-21	99.09	98
Oct-21	99.11	98
Nov-21	99.11	98
Dec-21	99.09	98
Jan-22	99.04	98
Feb-22	99.04	98
Mar-22	98.99	98
Apr-22	98.96	98
May-22	98.90	98
Jun-22	98.96	98
Jul-22	99.46	99
Aug-22	99.47	98.50
Sep-22	99.46	98.50

Notes:

This table shows CCT drinking water quality compliance according to the South African National Standard 241:2015. Compliance, measured against all prescribed chemical and microbiological components, consistently exceeds the very high CCT target of 98%. (Overall compliance percentages of continuous sampling and analysis are released on a monthly basis.