



## Headline Statistics

WCWSS DAM STORAGE  
(%)

**79.6**

WEEKLY DAM LEVEL CHANGE  
(%)

**-1.60**

AVERAGE TOTAL  
DAILY WATER USE  
(MLD)

**915**

## Water Production from Different Sources

MAJOR DAMS  
(MLD)

**893**

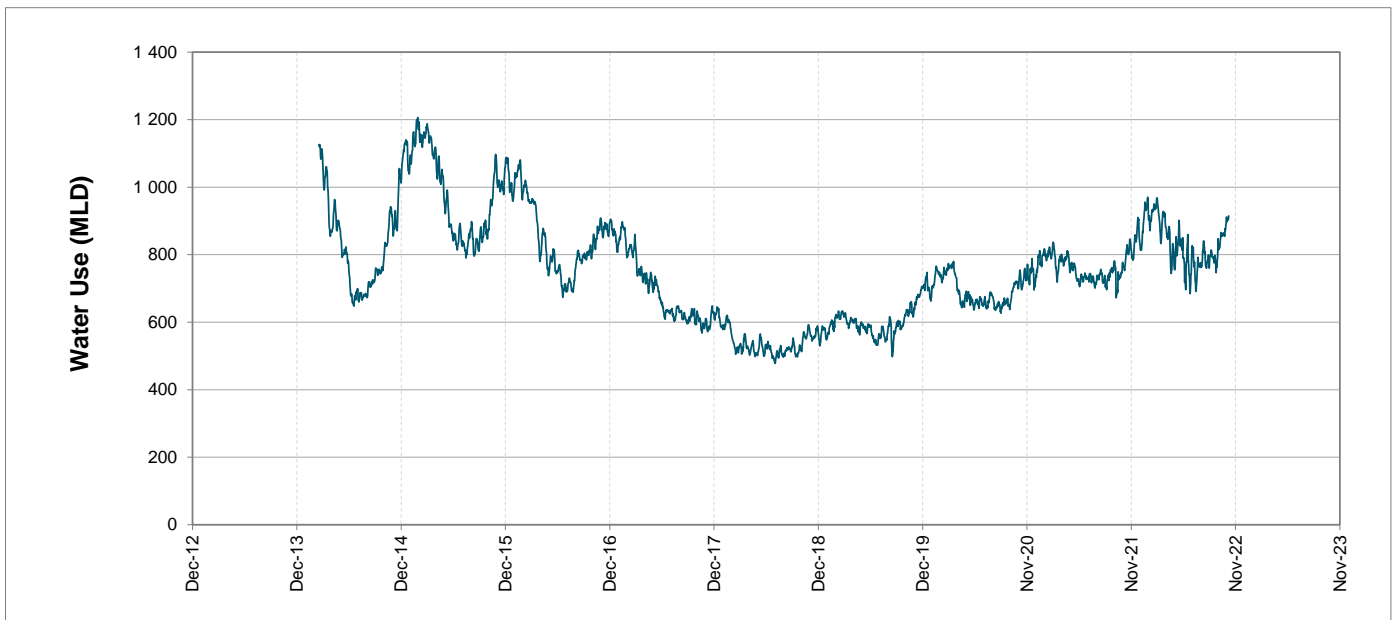
MINOR DAMS  
(MLD)

**19**

GROUND WATER  
AND SPRINGS  
(MLD)

**3**

## Overall Water Usage Trend (2010 - Present)



WCWSS means Western Cape Water Supply System

MLD means million litres per day

More information on Water Saving and Restrictions is available on the City of Cape Town's 'ThinkWater' website

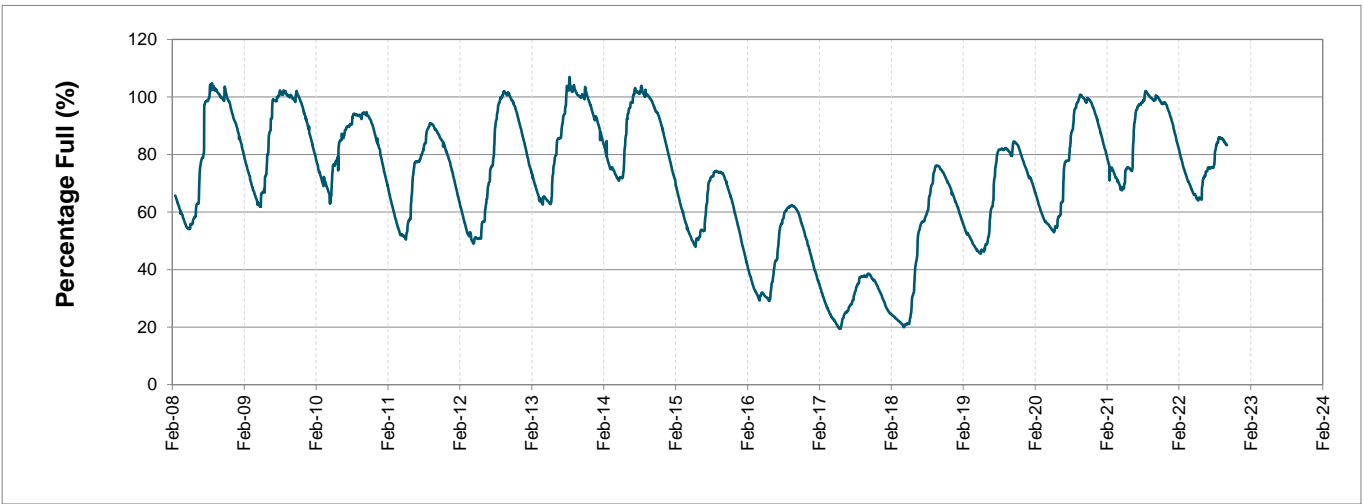
# Water Stored in Major Dams (WCWSS)

Overall Percentage Full **79.6%**

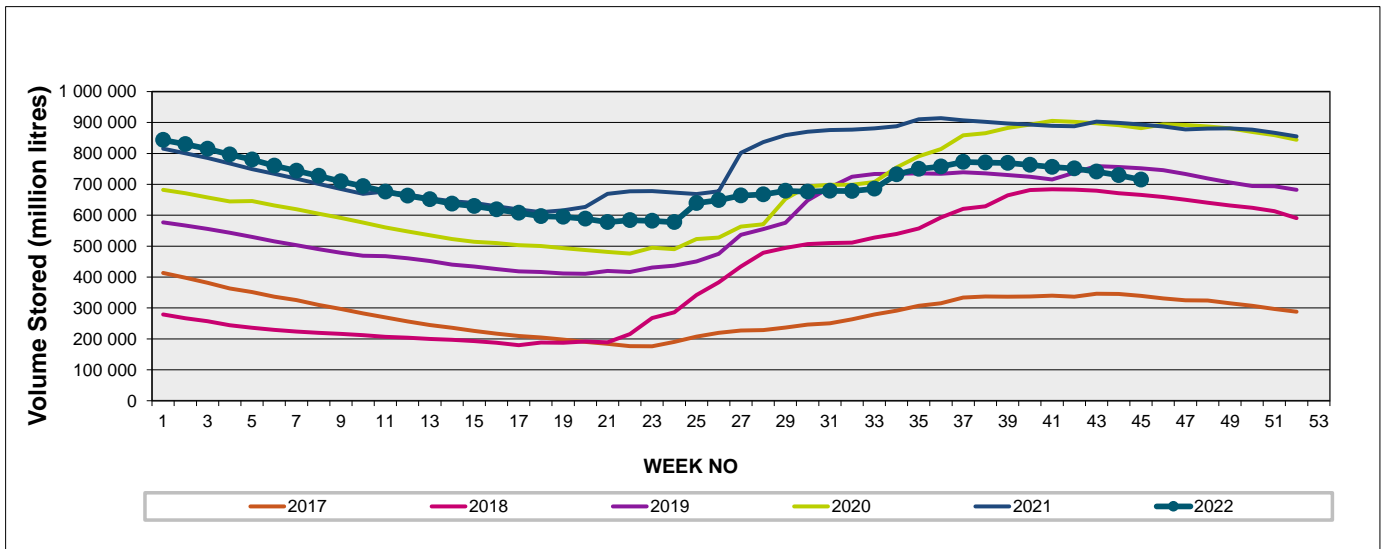
Weekly Change **-1.6%**

MAJOR DAMS (WCWSS)	STORAGE						
	CAPACITY	%	%	%	%	%	%
	MI	07 November 2022	Previous week	2021	2020	2019	2018
BERG RIVER	130 010	95.7	97.0	100.3	100.6	100.1	99.3
STEENBRAS LOWER	33 517	83.4	85.8	94.1	93.8	99.6	85.0
STEENBRAS UPPER	31 767	96.4	96.3	97.5	93.4	92.7	69.3
THEEWATERSKLOOF	480 188	77.7	79.5	100.8	99.8	75.4	57.2
VOËLVLEI	164 095	65.9	67.9	98.0	95.2	90.0	95.0
WEMMERSHOEK	58 644	86.9	87.3	95.4	96.7	94.9	91.0
<b>TOTAL STORED</b>	<b>898 221</b>	<b>715 294</b>	<b>729 527</b>	<b>893 961</b>	<b>884 022</b>	<b>758 606</b>	<b>663 628</b>
<b>% STORAGE</b>		<b>79.6%</b>	<b>81.2%</b>	<b>99.5%</b>	<b>98.4%</b>	<b>84.5%</b>	<b>73.9%</b>

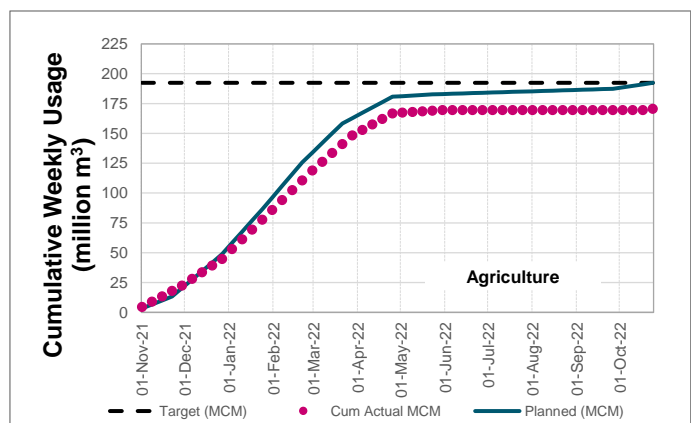
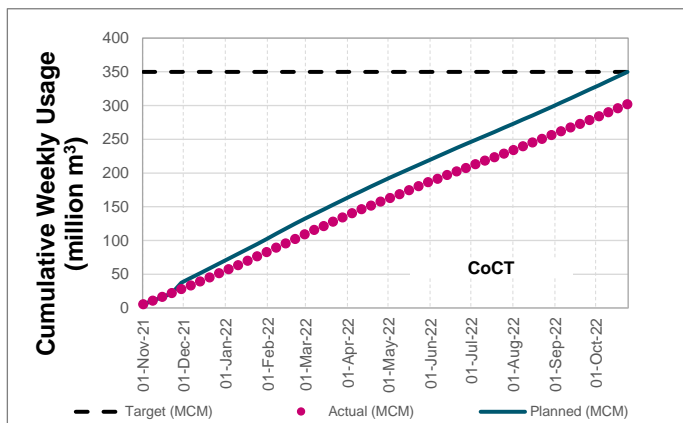
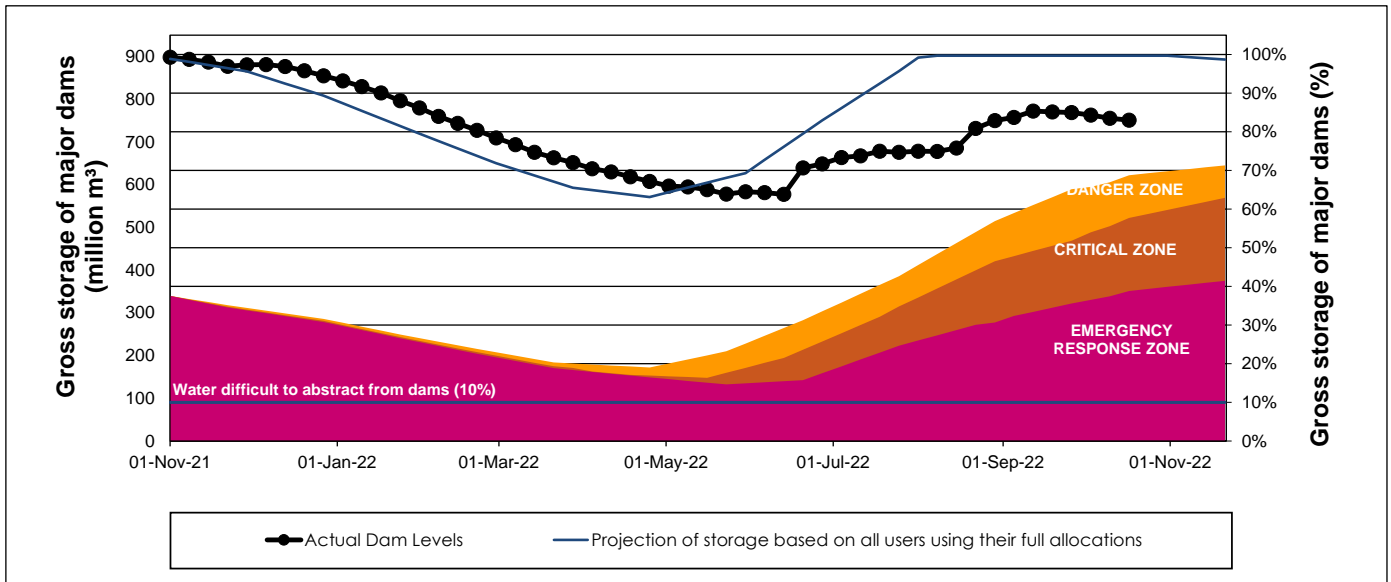
## WCWSS Storage Record (2008 - Present)



## WCWSS Comparative Storage Graph



# WCWSS Dam Storage and Water Use Tracking



## Water Stored in Minor Dams

Overall Percentage Full **65.2**

Weekly Change **-4.64**

MINOR DAMS	STORAGE						
	CAPACITY	%	%	%	%	%	%
	MI	07 November 2022	Previous week	2021	2020	2019	2018
ALEXANDRA (Table Mountain)	126	68.9	75.8	61.4	75.1	70.5	72.1
DE VILLIERS (Table Mountain)	243	83.5	83.8	67.1	98.8	100.0	85.1
HELY-HUTCHINSON (Table Mount)	925	61.4	61.8	100.0	83.0	99.5	97.6
KLEINPLAATS (Simon's Town)	1 368	64.0	68.9	96.9	94.7	86.2	95.6
LAND-EN-ZEEZICHT (Helderberg)	451	79.3	81.7	100.0	96.0	84.2	99.2
LEWIS GAY (Simon's Town)	182	54.4	50.4	92.6	91.7	67.0	82.2
VICTORIA (Table Mountain)	128	94.3	97.0	100.4	96.2	98.5	93.9
WOODHEAD (Table Mountain)	954	60.0	72.3	57.8	72.0	88.1	67.2
<b>Total Stored</b>	<b>4 377</b>	<b>2854.8</b>	<b>3057.9</b>	<b>3739.8</b>	<b>3758.4</b>	<b>3856.6</b>	<b>3818.0</b>
<b>Percentages stored</b>		<b>65.2</b>	<b>69.9</b>	<b>85.4</b>	<b>85.9</b>	<b>88.1</b>	<b>87.2</b>

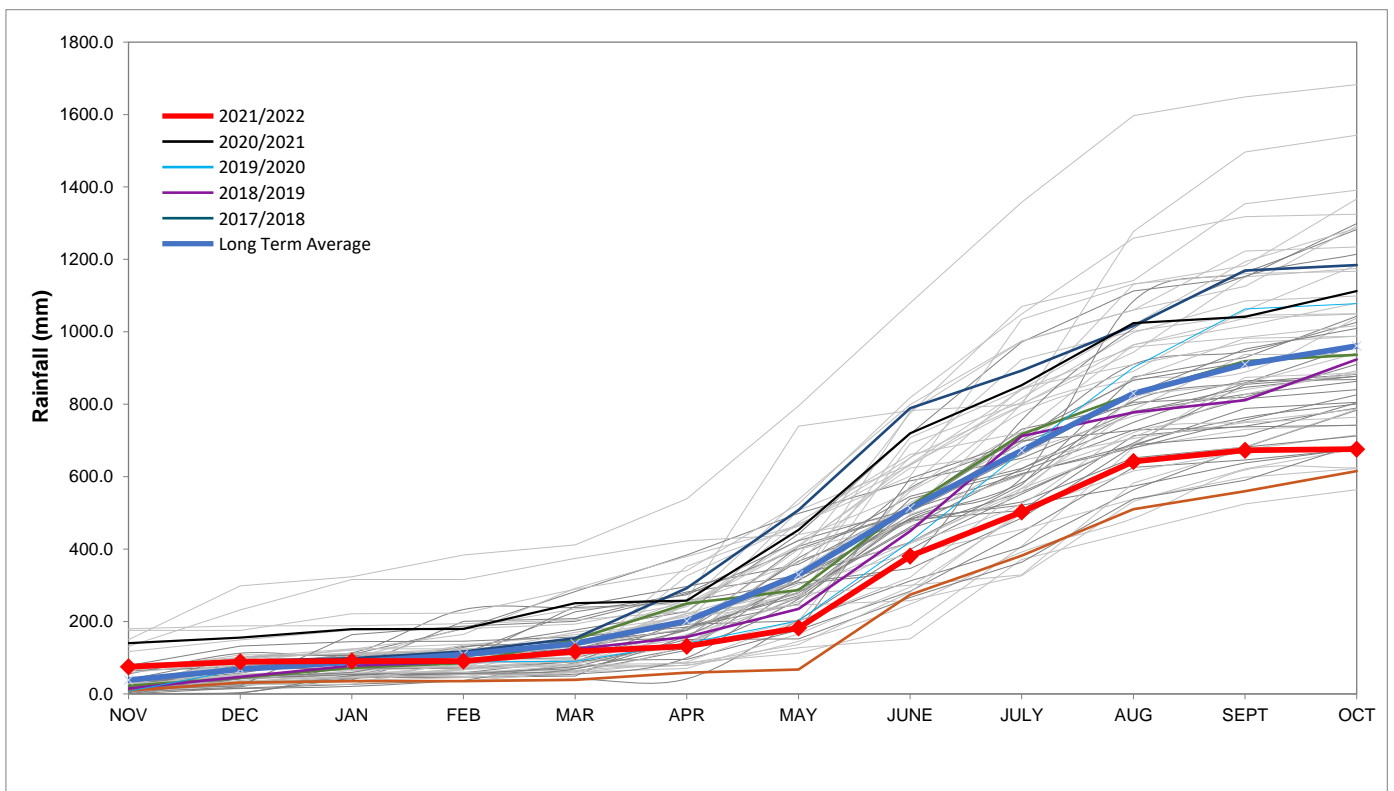
## Rainfall Recorded

RAINFALL (mm)	31-Oct	01-Nov	02-Nov	03-Nov	04-Nov	05-Nov	06-Nov	Nov	
								Total*	LT Average
Blackheath Upper	0.0	0.0	2.0	0.0	0.0	0.0	0.0	2.0	27.1
Brooklands	0.0	0.0	3.0	0.0	0.0	0.0	0.0	3.0	50.8
Newlands	0.0	0.0	4.0	0.0	0.0	0.0	0.0	4.0	60.3
Steenbras	0.0	0.0	4.0	0.0	0.0	0.0	0.0	4.0	49.3
Table Mountain (Woodhead)	0.0	0.0	2.0	0.0	0.0	0.0	0.0	2.0	69.0
Theewaterskloof	0.0	0.0	0.2	0.0	0.8	0.0	0.0	1.0	36.4
Tygerberg	0.0	0.0	3.2	0.0	0.0	0.0	0.0	3.2	24.5
Voëlvllei	0.0	0.0	0.0	0.0	0.0	0.0	0.0	0.0	29.0
Wemmershoek	0.0	0.0	7.1	0.0	0.0	0.0	0.0	7.1	39.8
Wynberg	0.0	0.0	6.1	0.0	0.0	0.0	0.0	6.1	44.9

Notes: \*Total/cummulative rainfall for month indicated above  
LT: Long Term

## Accumulated Monthly Rainfall at Wemmershoek

Note: Wemmershoek station used due to long record and mountainous location



## Drinking Water Quality

### SAMPLE PASS RATE

Month	Water Quality Compliance (%)	Target (%)
Jul-21	99.10	98
Aug-21	99.12	98
Sep-21	99.09	98
Oct-21	99.11	98
Nov-21	99.11	98
Dec-21	99.09	98
Jan-22	99.04	98
Feb-22	99.04	98
Mar-22	98.99	98
Apr-22	98.96	98
May-22	98.90	98
Jun-22	98.96	98
Jul-22	99.46	99
Aug-22	99.47	98.50
Sep-22	99.46	98.50

#### Notes:

This table shows CCT drinking water quality compliance according to the South African National Standard 241:2015. Compliance, measured against all prescribed chemical and microbiological components, consistently exceeds the very high CCT target of 98%. (Overall compliance percentages of continuous sampling and analysis are released on a monthly basis.