



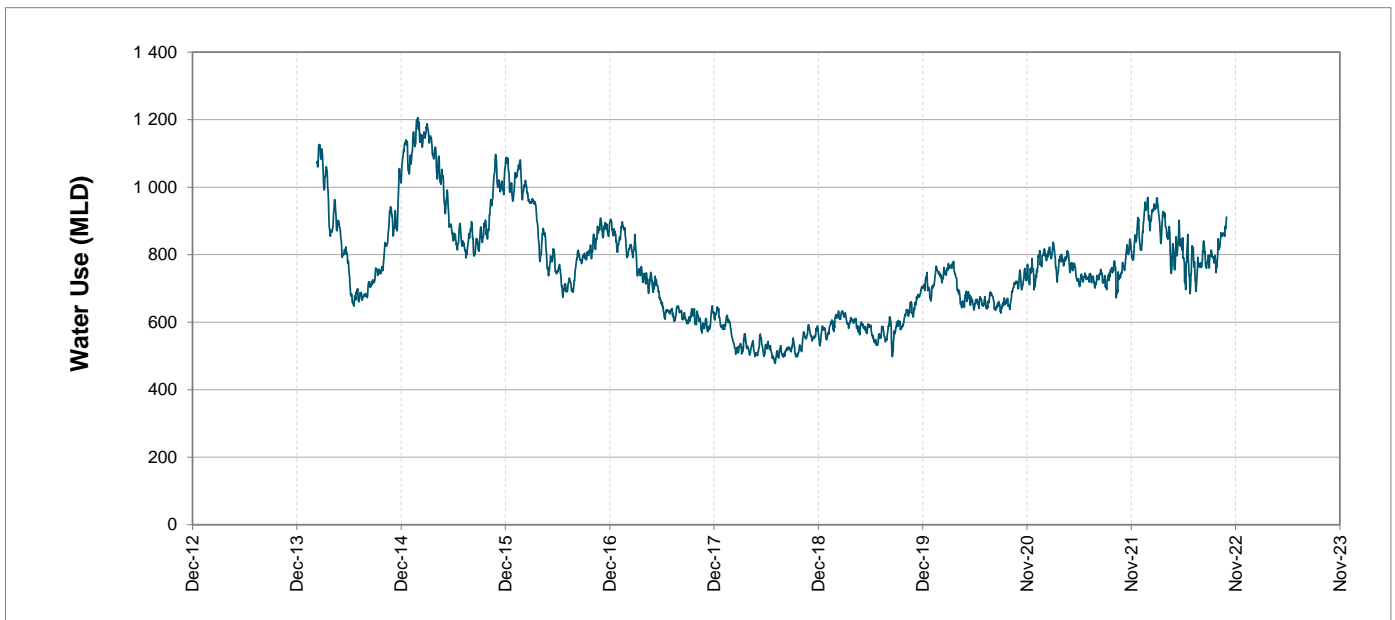
## Headline Statistics



## Water Production from Different Sources



## Overall Water Usage Trend (2010 - Present)



WCWSS means Western Cape Water Supply System

MLD means million litres per day

More information on Water Saving and Restrictions is available on the City of Cape Town's 'ThinkWater' website

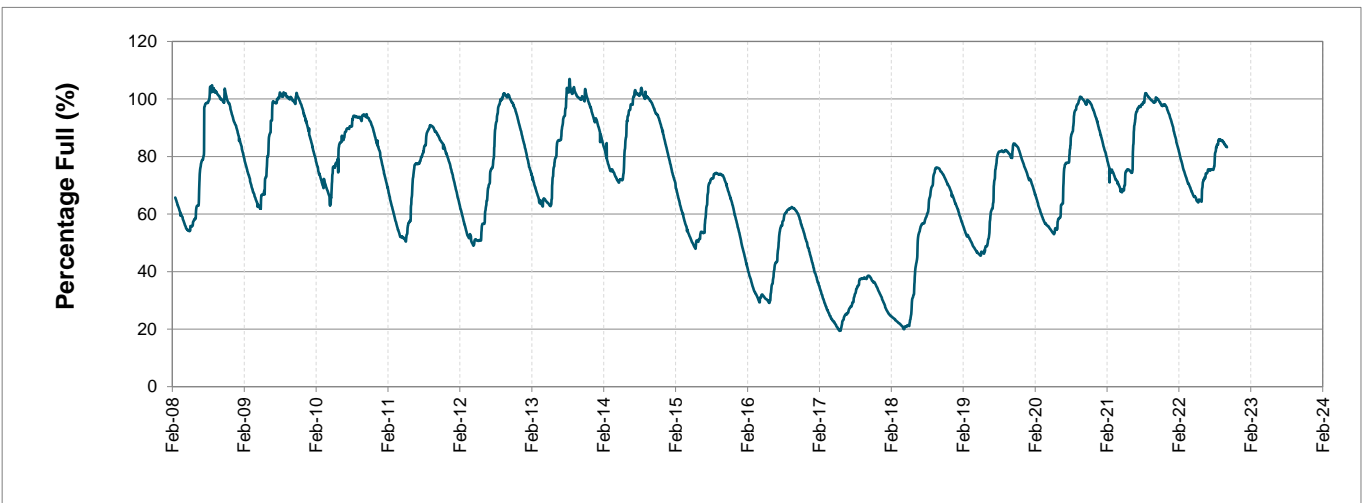
# Water Stored in Major Dams (WCWSS)

Overall Percentage Full **81.2%**

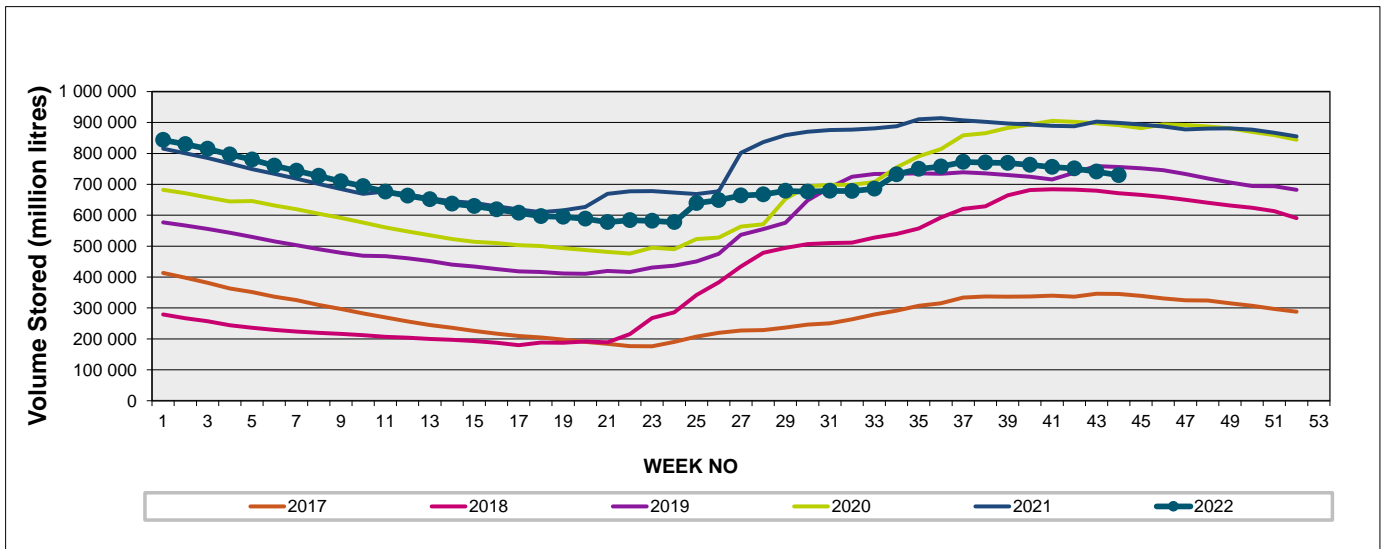
Weekly Change **-1.3%**

MAJOR DAMS (WCWSS)	STORAGE						
	CAPACITY	%	%	%	%	%	%
	MI	31 October 2022	Previous week	2021	2020	2019	2018
BERG RIVER	130 010	97.0	97.8	100.2	99.8	100.7	99.3
STEENBRAS LOWER	33 517	85.8	87.0	93.7	94.7	101.6	86.6
STEENBRAS UPPER	31 767	96.3	96.5	98.6	89.9	86.1	72.3
THEEWATERSKLOOF	480 188	79.5	80.7	101.7	100.1	74.9	57.9
VOËLVLEI	164 095	67.9	70.2	98.3	96.3	89.3	96.1
WEMMERSHOEK	58 644	87.3	87.5	95.8	95.8	95.8	91.8
<b>TOTAL STORED</b>	<b>898 221</b>	<b>729 527</b>	<b>740 879</b>	<b>898 827</b>	<b>885 053</b>	<b>754 718</b>	<b>670 703</b>
<b>% STORAGE</b>		<b>81.2%</b>	<b>82.5%</b>	<b>100.1%</b>	<b>98.5%</b>	<b>84.0%</b>	<b>74.7%</b>

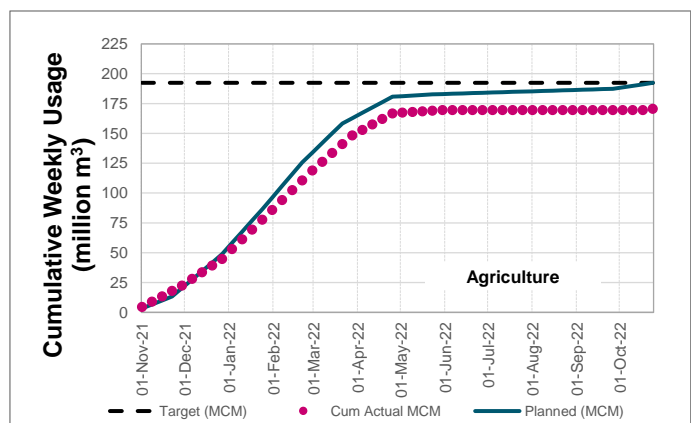
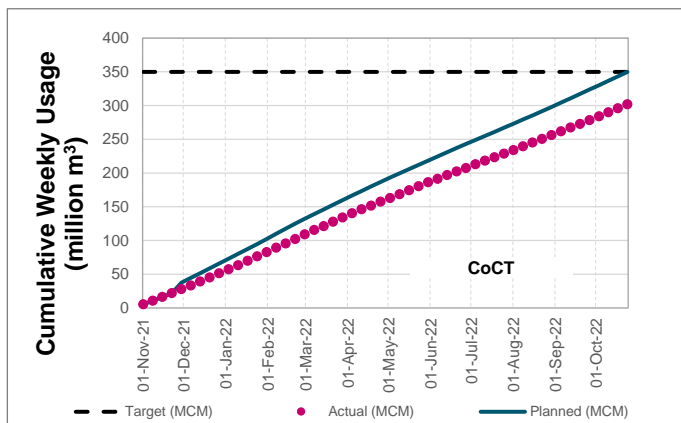
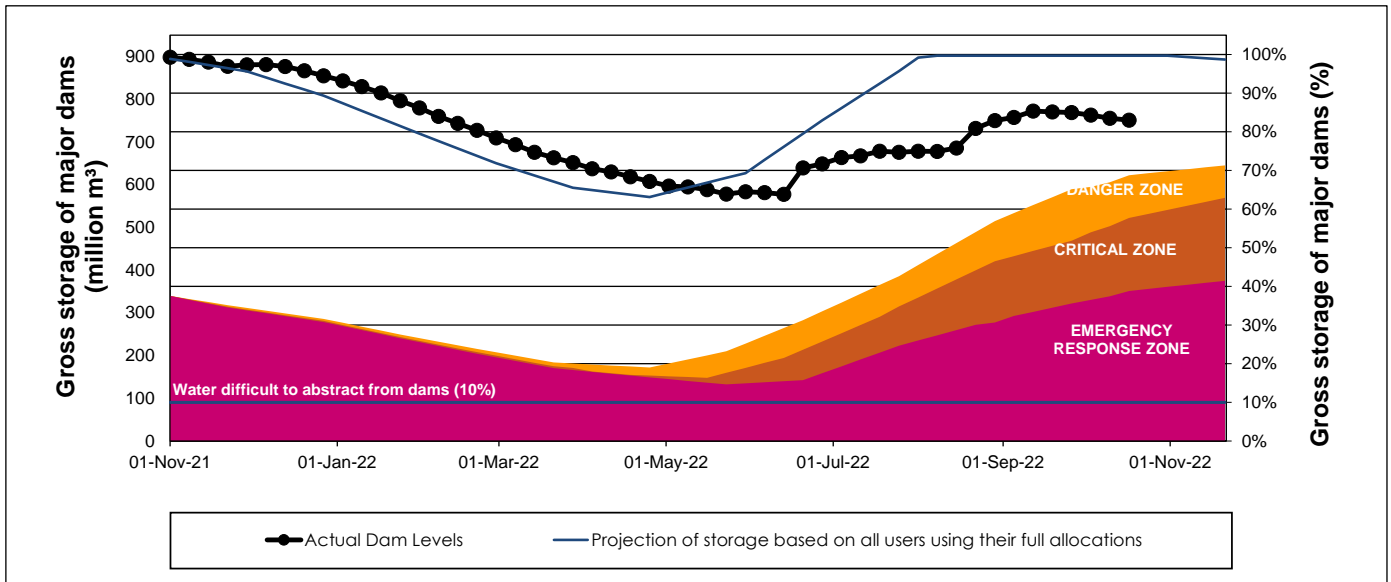
## WCWSS Storage Record (2008 - Present)



## WCWSS Comparative Storage Graph



# WCWSS Dam Storage and Water Use Tracking



## Water Stored in Minor Dams

Overall Percentage Full **69.9**

Weekly Change **-2.22**

MINOR DAMS	STORAGE						
	CAPACITY	%	%	%	%	%	%
	MI	31 October 2022	Previous week	2021	2020	2019	2018
ALEXANDRA (Table Mountain)	126	75.8	66.1	61.2	78.3	77.4	75.8
DE VILLIERS (Table Mountain)	243	83.8	83.8	71.8	100.0	100.2	88.9
HELY-HUTCHINSON (Table Mount)	925	61.8	62.0	99.5	90.1	99.8	98.0
KLEINPLAATS (Simon's Town)	1 368	68.9	70.6	95.8	93.6	80.4	95.8
LAND-EN-ZEEZICHT (Helderberg)	451	81.7	83.4	100.0	95.9	85.2	99.5
LEWIS GAY (Simon's Town)	182	50.4	45.3	92.9	100.9	64.0	84.8
VICTORIA (Table Mountain)	128	97.0	97.0	100.4	98.5	100.8	95.4
WOODHEAD (Table Mountain)	954	72.3	81.3	59.6	76.0	98.9	67.3
<b>Total Stored</b>	<b>4 377</b>	<b>3057.9</b>	<b>3155.0</b>	<b>3749.0</b>	<b>3873.8</b>	<b>3899.5</b>	<b>3847.8</b>
<b>Percentages stored</b>		<b>69.9</b>	<b>72.1</b>	<b>85.7</b>	<b>88.5</b>	<b>89.1</b>	<b>87.9</b>

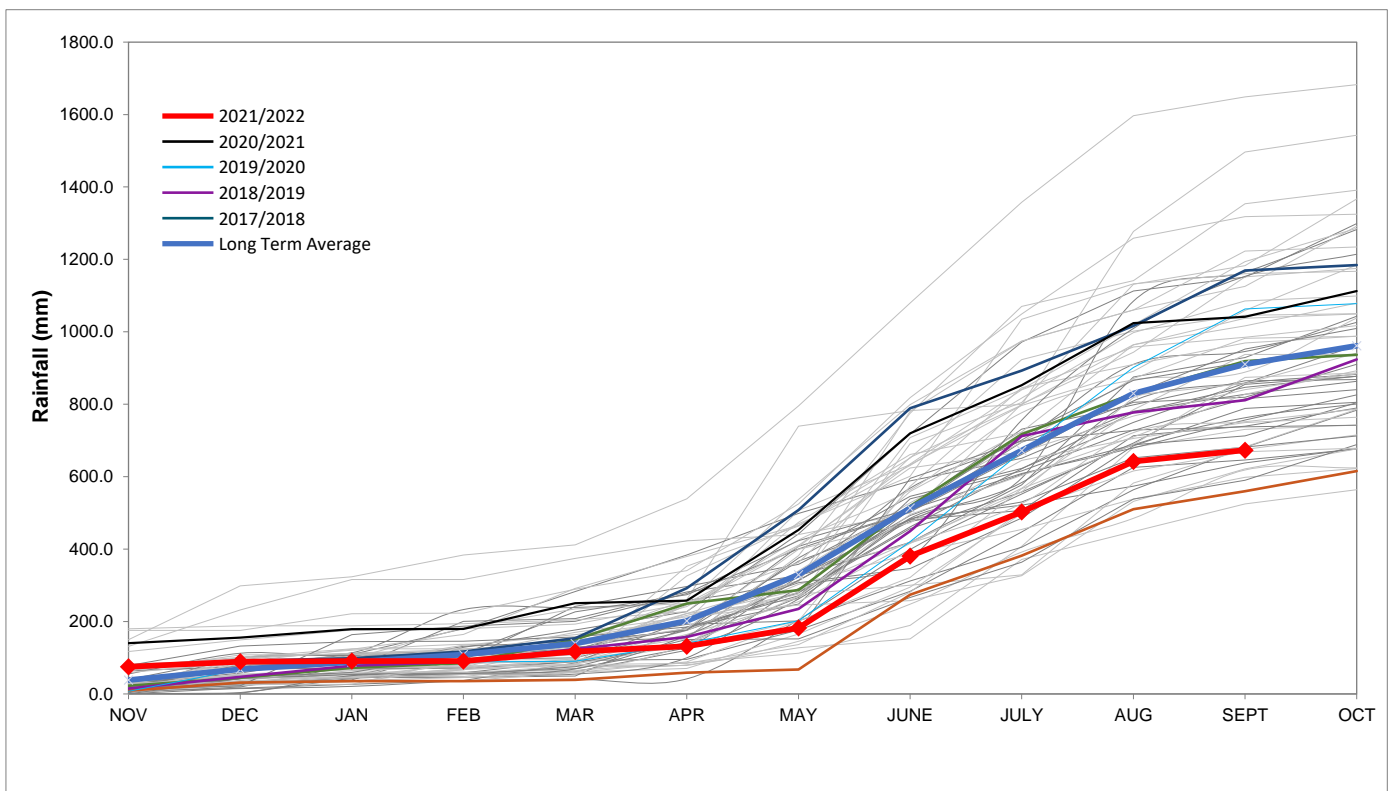
## Rainfall Recorded

RAINFALL (mm)	24-Oct	25-Oct	26-Oct	27-Oct	28-Oct	29-Oct	30-Oct	Oct	
								Total*	LT Average
Blackheath Upper	0.0	0.0	0.0	0.0	0.0	0.0	0.0	4.0	26.8
Brooklands	0.0	0.0	0.0	0.0	0.0	0.0	0.0	4.0	47.7
Newlands	0.0	0.0	0.0	0.0	0.0	0.0	0.1	1.1	72.2
Steenbras	0.0	0.0	0.0	0.0	0.0	0.0	0.0	3.2	55.4
Table Mountain (Woodhead)	0.0	0.0	0.0	0.0	0.0	0.0	0.0	5.5	83.7
Theewaterskloof	0.0	0.0	0.0	0.0	0.0	0.0	0.0	13.1	44.1
Tygerberg	0.0	0.0	0.0	0.0	0.0	0.0	0.0	3.9	28.9
Voëlvllei	0.0	0.0	0.0	0.0	0.0	0.0	0.0	5.0	26.7
Wemmershoek	0.0	0.0	0.0	0.0	0.0	0.0	0.0	2.9	43.0
Wynberg	0.0	0.0	0.0	0.0	0.0	0.0	0.0	1.4	51.1

Notes: \*Total/cummulative rainfall for month indicated above  
LT: Long Term

## Accumulated Monthly Rainfall at Wemmershoek

Note: Wemmershoek station used due to long record and mountainous location



## Drinking Water Quality

### SAMPLE PASS RATE

Month	Water Quality Compliance (%)	Target (%)
Jul-21	99.10	98
Aug-21	99.12	98
Sep-21	99.09	98
Oct-21	99.11	98
Nov-21	99.11	98
Dec-21	99.09	98
Jan-22	99.04	98
Feb-22	99.04	98
Mar-22	98.99	98
Apr-22	98.96	98
May-22	98.90	98
Jun-22	98.96	98
Jul-22	99.46	99
Aug-22	99.47	98.50
Sep-22	99.46	98.50

#### Notes:

This table shows CCT drinking water quality compliance according to the South African National Standard 241:2015. Compliance, measured against all prescribed chemical and microbiological components, consistently exceeds the very high CCT target of 98%. (Overall compliance percentages of continuous sampling and analysis are released on a monthly basis.