



Headline Statistics

WCWSS DAM STORAGE
(%)

82.5

WEEKLY DAM LEVEL CHANGE
(%)

-1.10

AVERAGE TOTAL
DAILY WATER USE
(MLD)

854

Water Production from Different Sources

MAJOR DAMS
(MLD)

832

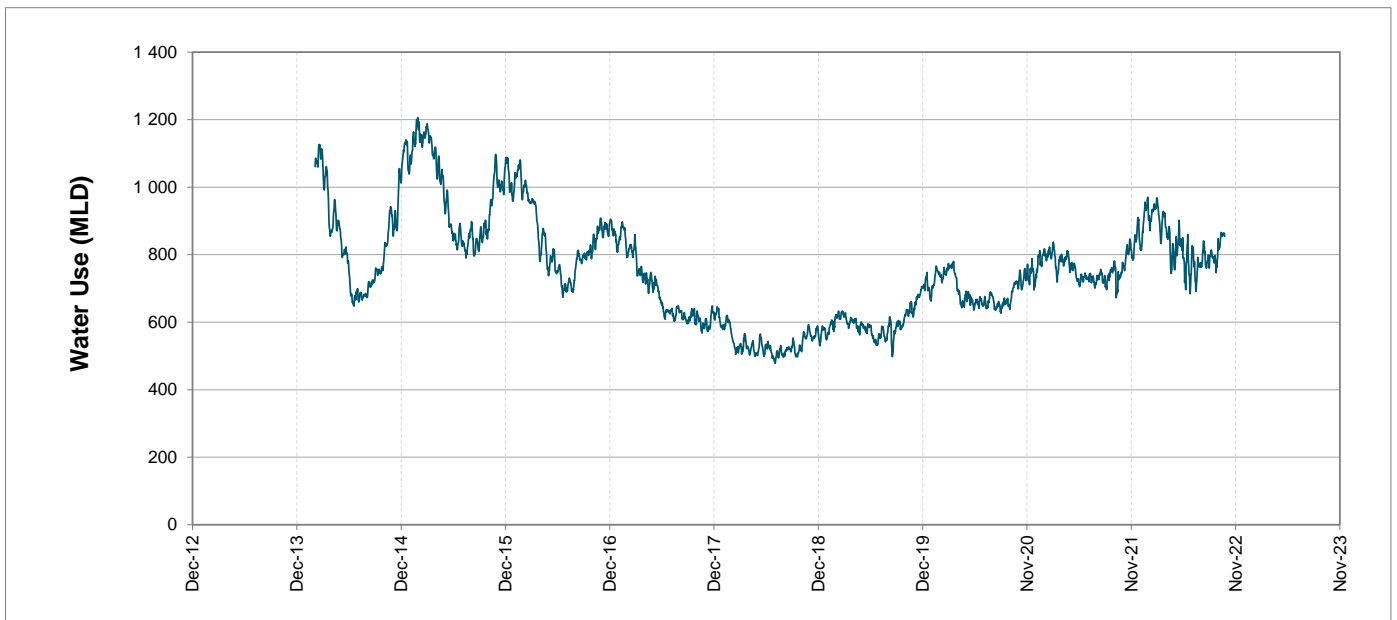
MINOR DAMS
(MLD)

19

GROUND WATER
AND SPRINGS
(MLD)

3

Overall Water Usage Trend (2010 - Present)



WCWSS means Western Cape Water Supply System

MLD means million litres per day

More information on Water Saving and Restrictions is available on the City of Cape Town's 'ThinkWater' website

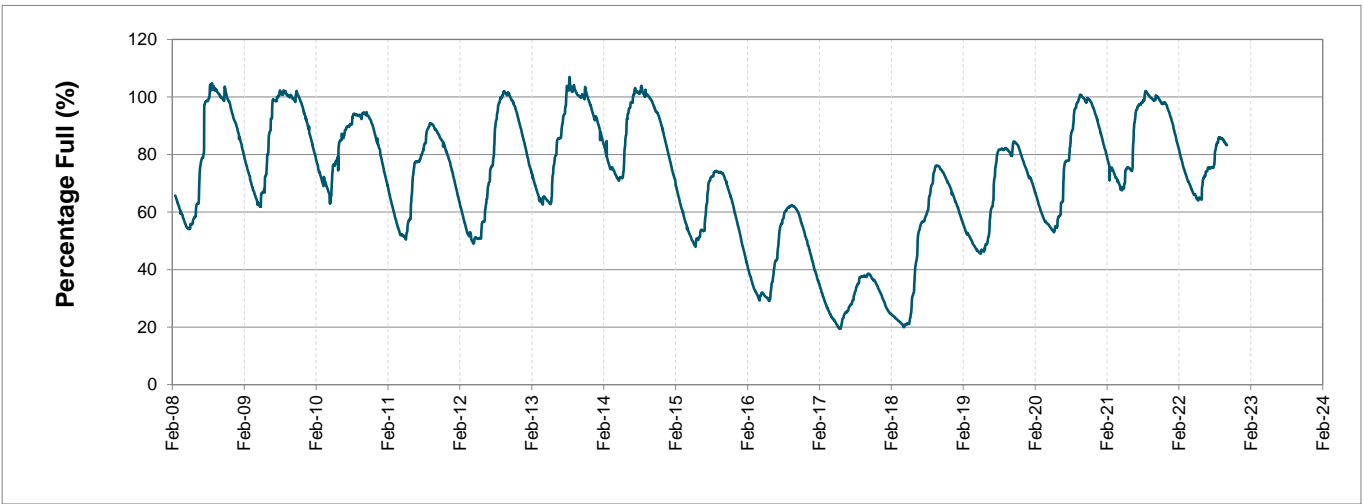
Water Stored in Major Dams (WCWSS)

Overall Percentage Full **82.5%**

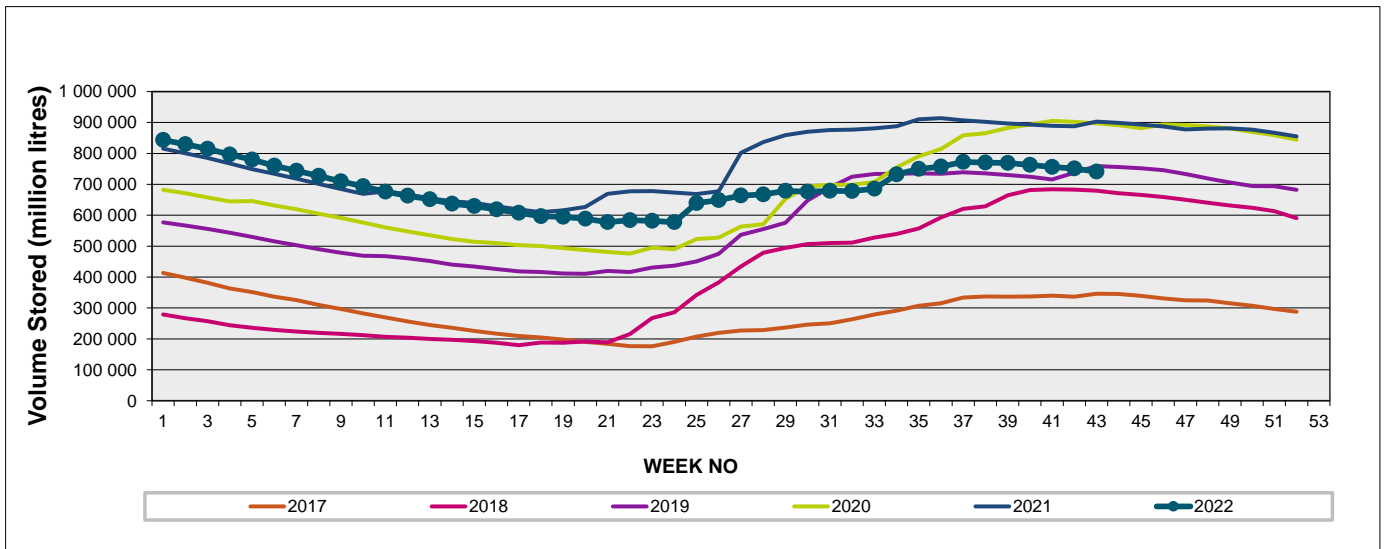
Weekly Change **-1.1%**

MAJOR DAMS (WCWSS)	STORAGE						
	CAPACITY	%	%	%	%	%	%
	MI	24 October 2022	Previous week	2021	2020	2019	2018
BERG RIVER	130 010	97.8	98.6	101.4	100.0	97.6	99.3
STEENBRAS LOWER	33 517	87.0	88.7	95.3	96.4	91.9	88.0
STEENBRAS UPPER	31 767	96.5	96.9	97.8	91.8	78.9	76.5
THEEWATERSKLOOF	480 188	80.7	82.1	102.1	101.0	69.8	58.4
VOËLVLEI	164 095	70.2	71.3	98.3	97.3	86.9	96.8
WEMMERSHOEK	58 644	87.5	87.7	96.4	97.3	91.2	92.7
TOTAL STORED	898 221	740 879	751 257	903 137	892 941	714 004	676 638
% STORAGE		82.5%	83.6%	100.5%	99.4%	79.5%	75.3%

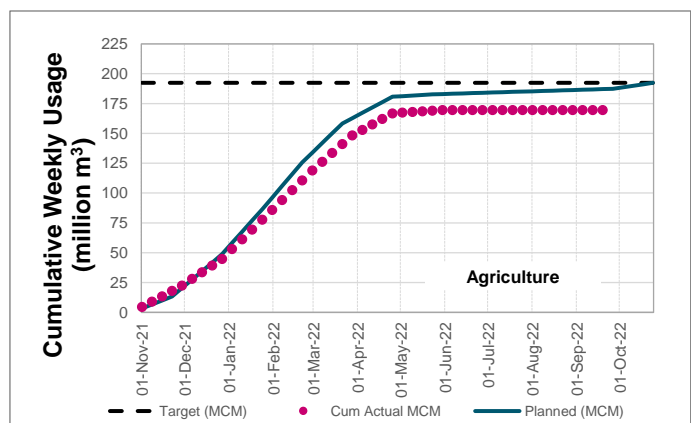
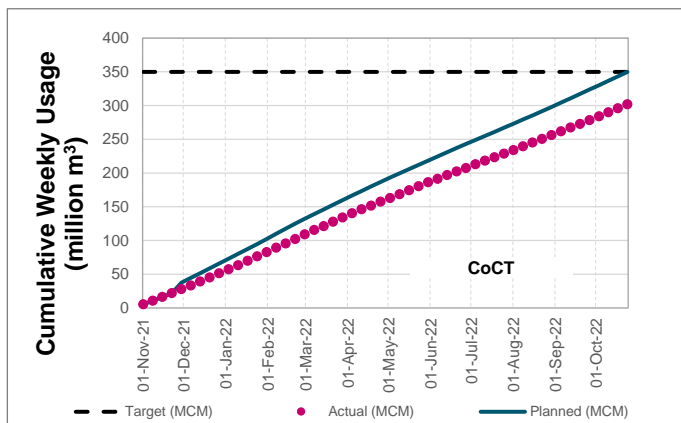
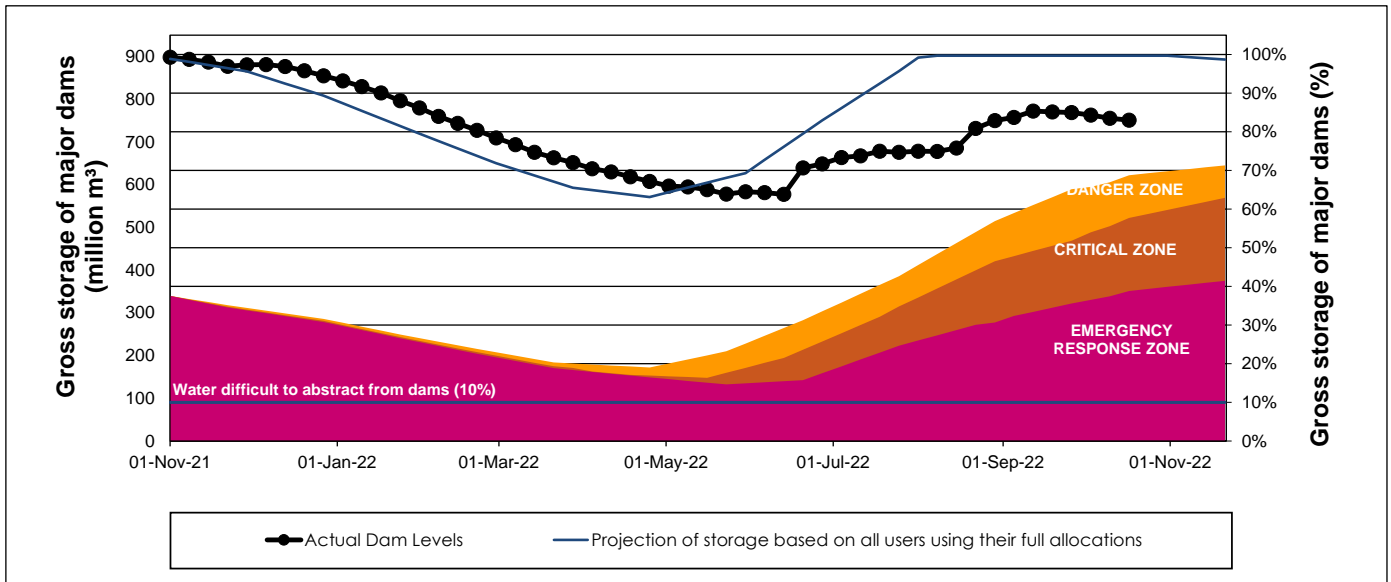
WCWSS Storage Record (2008 - Present)



WCWSS Comparative Storage Graph



WCWSS Dam Storage and Water Use Tracking



Water Stored in Minor Dams

Overall Percentage Full **72.1**

Weekly Change **-1.82**

MINOR DAMS	STORAGE						
	CAPACITY	%	%	%	%	%	%
	MI	24 October 2022	Previous week	2021	2020	2019	2018
ALEXANDRA (Table Mountain)	126	66.1	79.2	61.4	83.5	47.2	79.5
DE VILLIERS (Table Mountain)	243	83.8	83.4	76.7	99.8	99.5	92.5
HELY-HUTCHINSON (Table Mount)	925	62.0	71.4	102.2	96.9	98.6	98.3
KLEINPLAATS (Simon's Town)	1 368	70.6	71.1	98.0	95.3	78.8	98.0
LAND-EN-ZEEZICHT (Helderberg)	451	83.4	84.9	100.0	96.2	83.0	100.0
LEWIS GAY (Simon's Town)	182	45.3	40.9	97.2	100.9	53.6	92.6
VICTORIA (Table Mountain)	128	97.0	98.5	100.0	99.3	97.3	97.7
WOODHEAD (Table Mountain)	954	81.3	78.0	61.0	77.1	86.7	66.9
Total Stored	4 377	3155.0	3234.6	3835.5	3978.3	3677.5	3907.4
Percentages stored		72.1	73.9	87.6	90.9	84.0	89.3

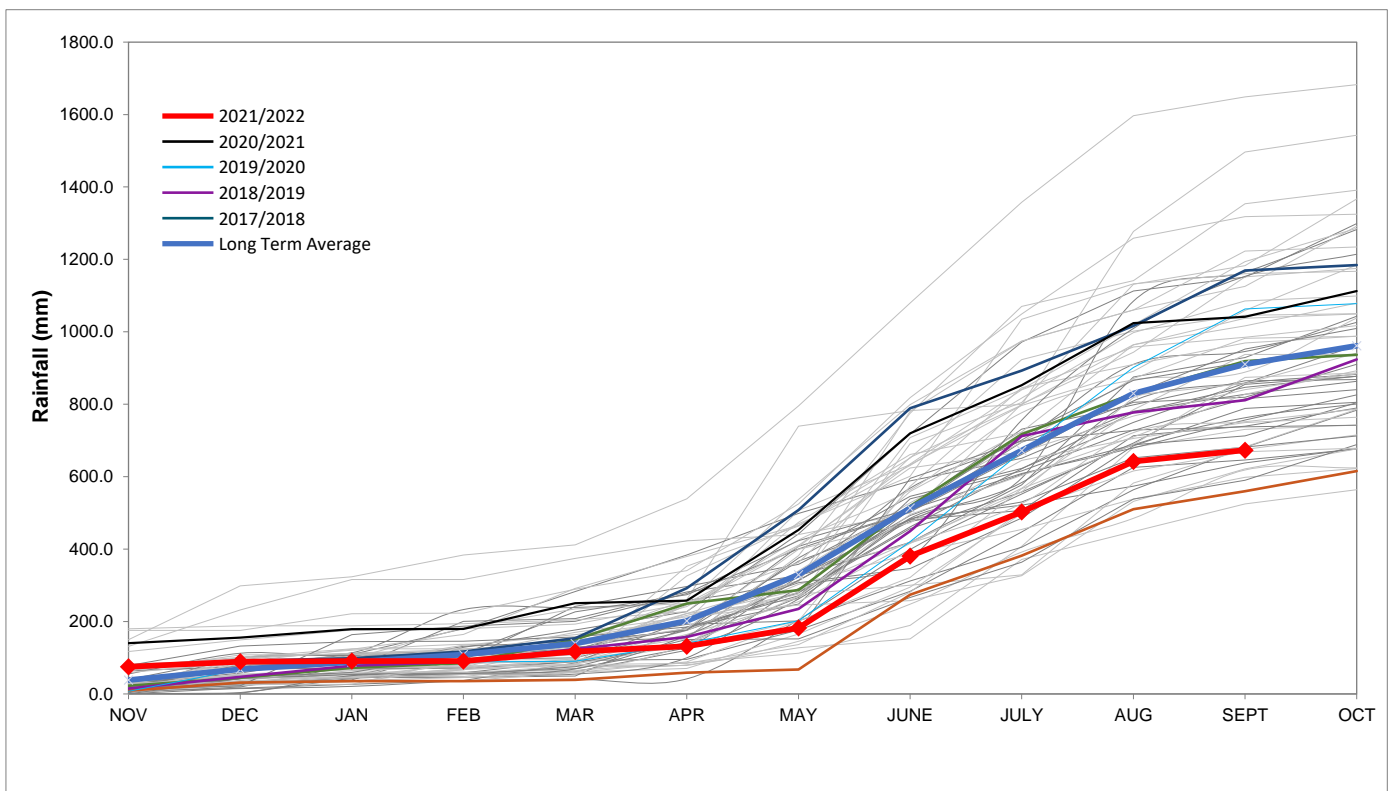
Rainfall Recorded

RAINFALL (mm)	17-Oct	18-Oct	19-Oct	20-Oct	21-Oct	22-Oct	23-Oct	Oct	
								Total*	LT Average
Blackheath Upper	0.0	0.0	0.0	0.0	0.0	0.0	0.0	4.0	26.8
Brooklands	0.0	0.0	0.0	0.0	0.0	0.0	0.0	4.0	47.7
Newlands	0.0	0.0	0.0	0.0	0.0	0.0	0.0	1.0	72.2
Steenbras	0.0	0.0	0.0	0.0	0.0	0.0	0.0	3.2	55.4
Table Mountain (Woodhead)	5.0	0.0	0.0	0.0	0.0	0.0	0.0	5.5	83.7
Theewaterskloof	0.0	0.0	0.0	0.0	0.0	0.0	0.0	13.1	44.1
Tygerberg	0.0	0.0	0.0	0.0	0.0	0.0	0.0	3.9	28.9
Voëlvllei	0.0	0.0	0.0	0.0	0.0	0.0	0.0	5.0	26.7
Wemmershoek	0.0	0.0	0.0	0.0	0.0	0.0	0.0	2.9	43.0
Wynberg	0.0	0.0	0.0	0.0	0.0	0.0	0.0	1.4	51.1

Notes: *Total/cummulative rainfall for month indicated above
LT: Long Term

Accumulated Monthly Rainfall at Wemmershoek

Note: Wemmershoek station used due to long record and mountainous location



Drinking Water Quality

SAMPLE PASS RATE

Month	Water Quality Compliance (%)	Target (%)
Jul-21	99.10	98
Aug-21	99.12	98
Sep-21	99.09	98
Oct-21	99.11	98
Nov-21	99.11	98
Dec-21	99.09	98
Jan-22	99.04	98
Feb-22	99.04	98
Mar-22	98.99	98
Apr-22	98.96	98
May-22	98.90	98
Jun-22	98.96	98
Jul-22	99.46	99
Aug-22	99.47	98.50
Sep-22	99.46	98.50

Notes:

This table shows CCT drinking water quality compliance according to the South African National Standard 241:2015. Compliance, measured against all prescribed chemical and microbiological components, consistently exceeds the very high CCT target of 98%. (Overall compliance percentages of continuous sampling and analysis are released on a monthly basis.