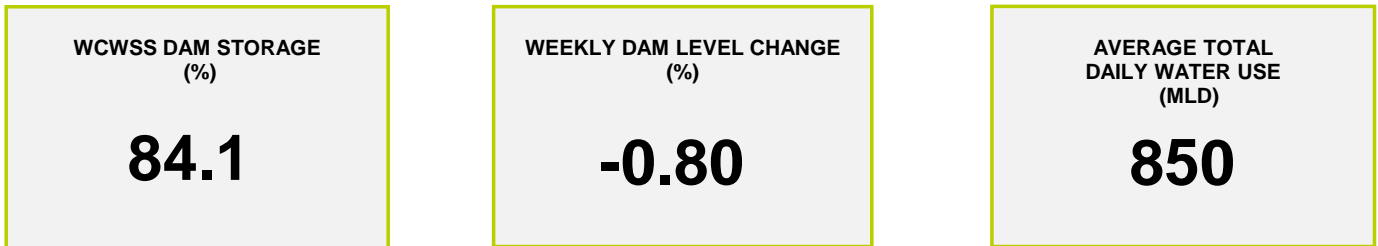




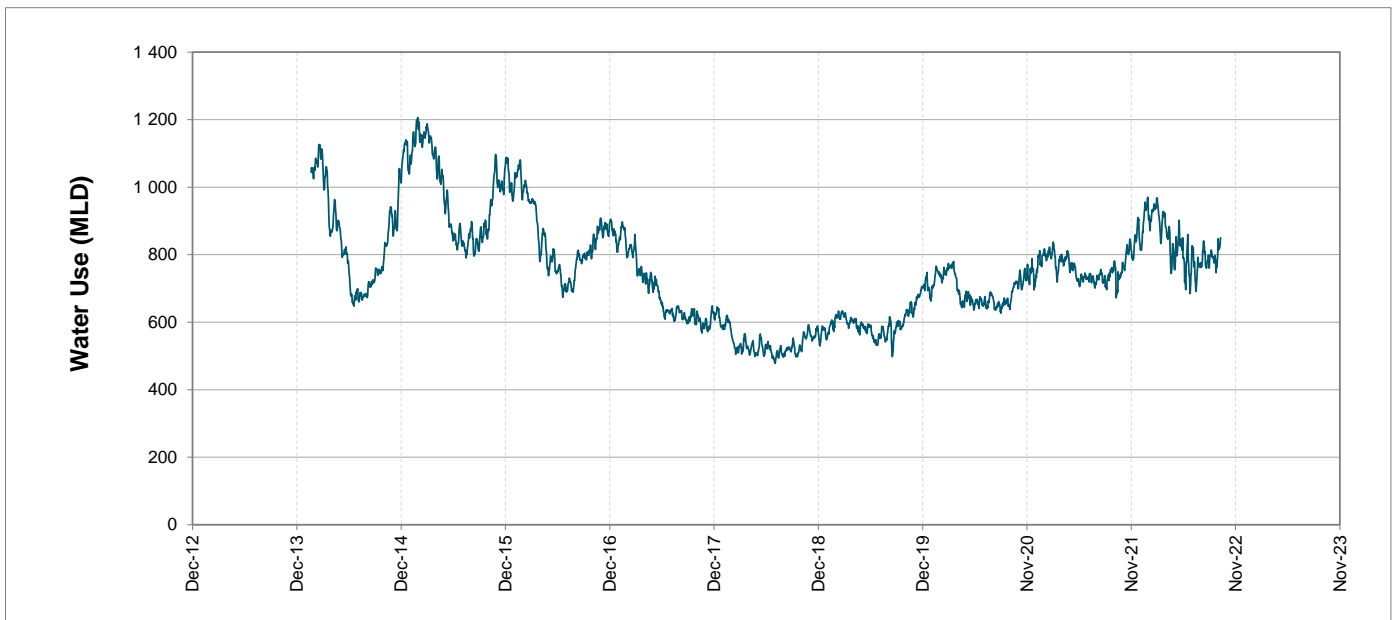
Headline Statistics



Water Production from Different Sources



Overall Water Usage Trend (2010 - Present)



WCWSS means Western Cape Water Supply System

MLD means million litres per day

More information on Water Saving and Restrictions is available on the City of Cape Town's 'ThinkWater' website

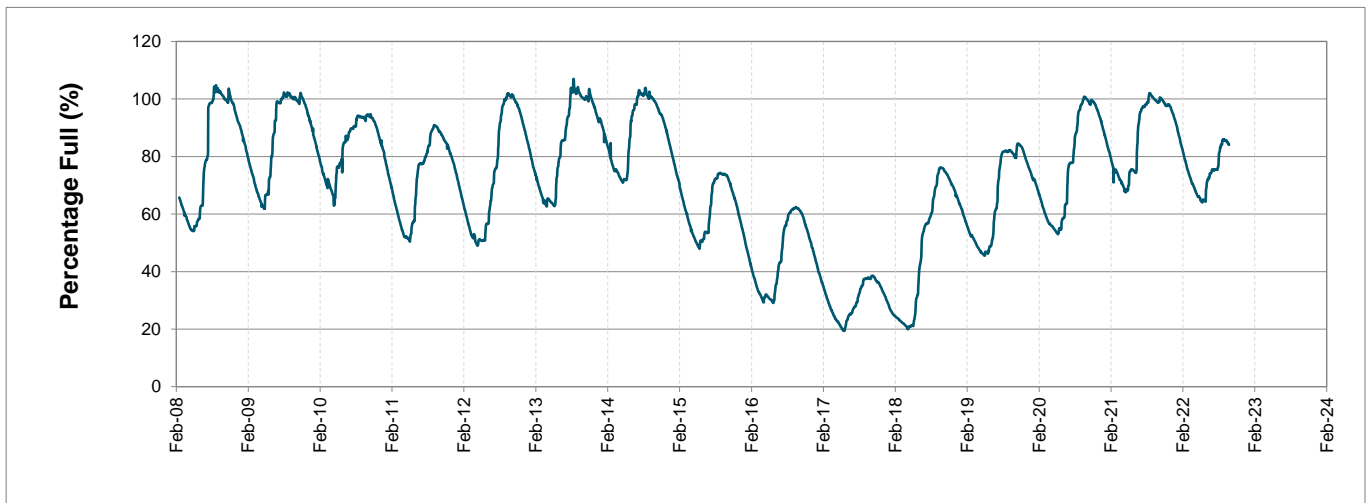
Water Stored in Major Dams (WCWSS)

Overall Percentage Full **84.1%**

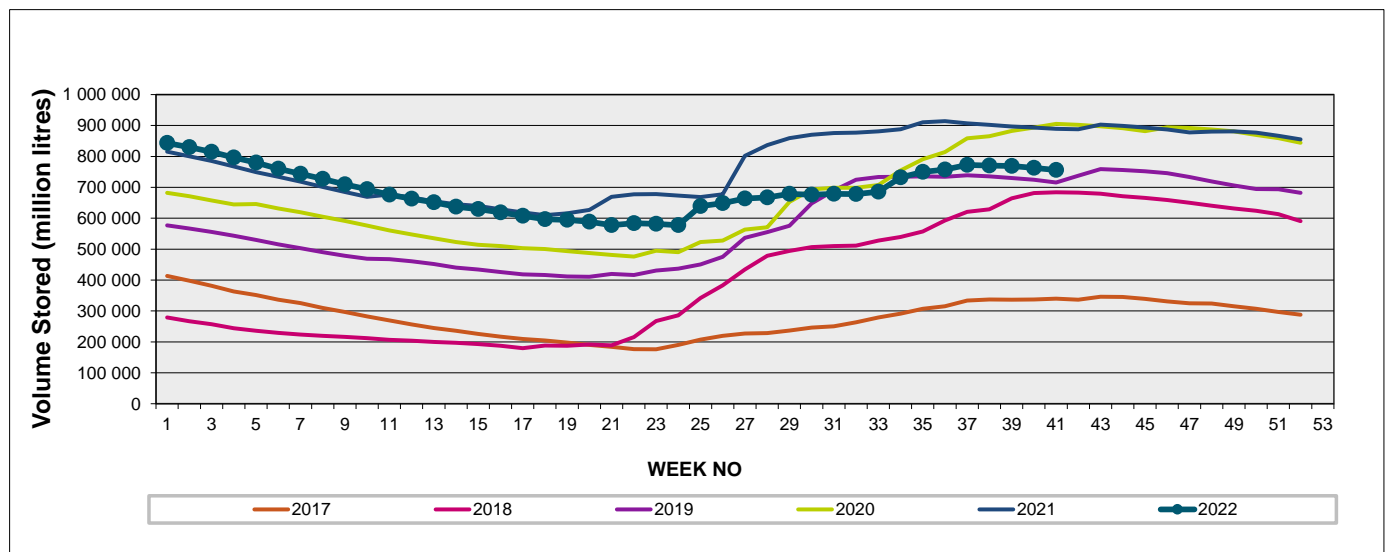
Weekly Change **-0.8%**

MAJOR DAMS (WCWSS)	STORAGE						
	CAPACITY	%	%	%	%	%	%
	MI	10 October 2022	Previous week	2021	2020	2019	2018
BERG RIVER	130 010	99.4	99.7	99.5	100.3	99.1	99.6
STEENBRAS LOWER	33 517	90.6	91.6	96.3	100.1	96.1	91.7
STEENBRAS UPPER	31 767	96.9	95.1	96.1	95.7	85.8	86.0
THEEWATERSKLOOF	480 188	82.4	83.8	99.6	101.9	70.9	58.8
VOËLVLEI	164 095	72.1	72.2	98.9	98.7	88.3	96.5
WEMMERSHOEK	58 644	87.9	88.0	96.5	99.1	91.6	94.8
TOTAL STORED	898 221	755 682	762 976	889 208	903 768	727 657	683 932
% STORAGE		84.1%	84.9%	99.0%	100.6%	81.0%	76.1%

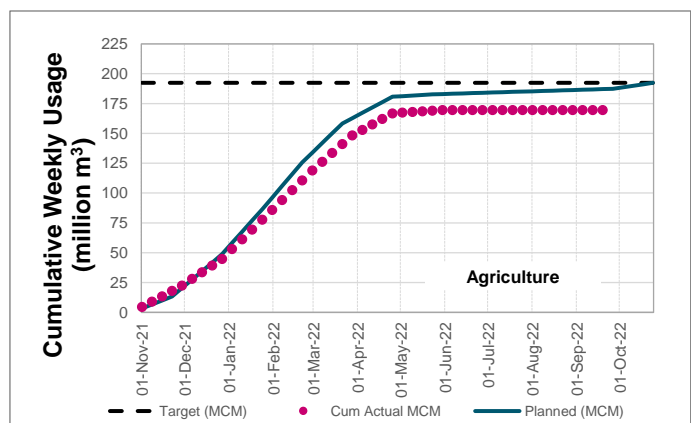
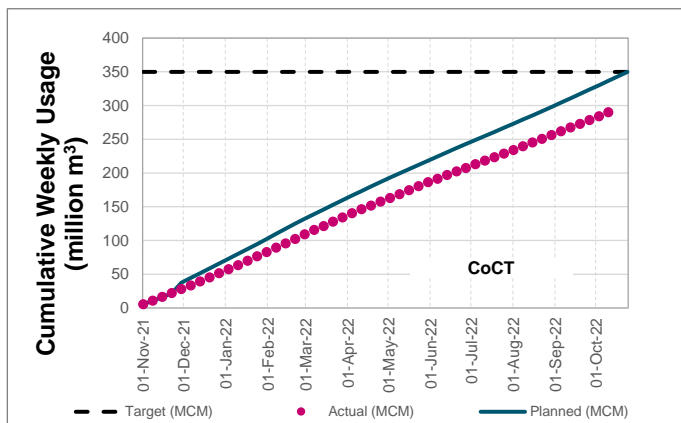
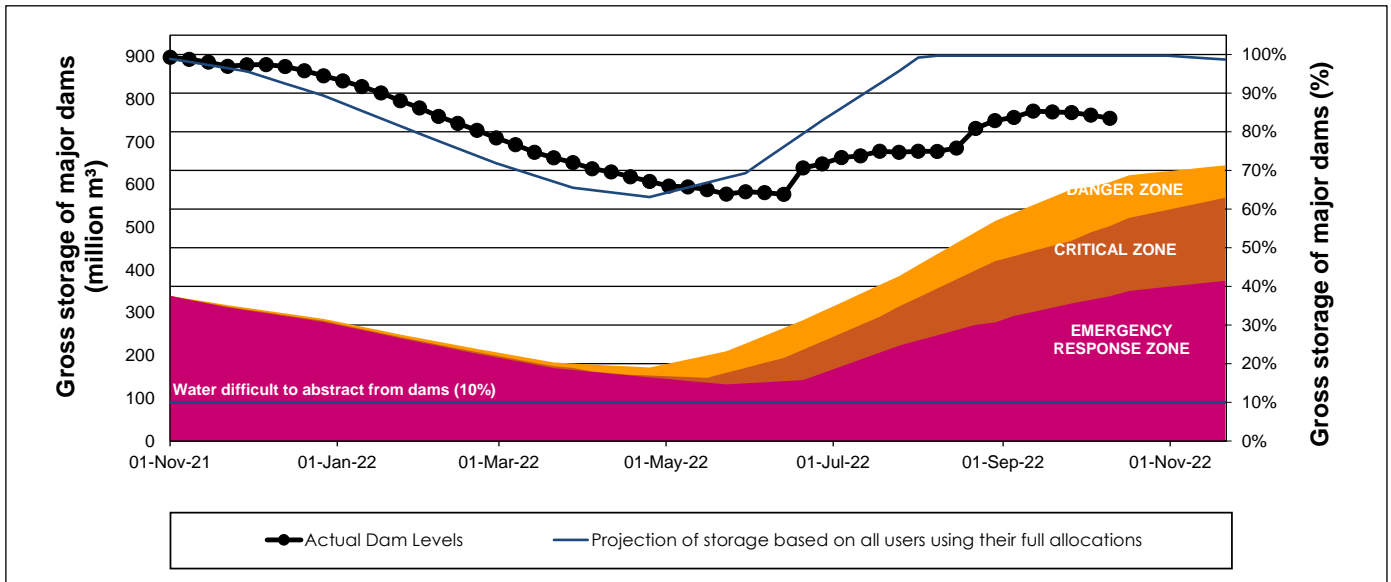
WCWSS Storage Record (2008 - Present)



WCWSS Comparative Storage Graph



WCWSS Dam Storage and Water Use Tracking



Water Stored in Minor Dams

Overall Percentage Full **76.1**

Weekly Change **-2.29**

MINOR DAMS	STORAGE						
	CAPACITY	%	%	%	%	%	%
	MI	10 October 2022	Previous week	2021	2020	2019	2018
ALEXANDRA (Table Mountain)	126	82.5	86.2	64.5	94.9	53.5	93.3
DE VILLIERS (Table Mountain)	243	81.7	80.7	89.9	100.2	100.5	98.6
HELY-HUTCHINSON (Table Mount)	925	98.6	100.0	99.3	99.5	100.0	99.8
KLEINPLAATS (Simon's Town)	1 368	73.7	74.6	99.3	100.2	82.6	99.1
LAND-EN-ZEEZICHT (Helderberg)	451	85.9	87.2	100.0	95.7	83.0	100.0
LEWIS GAY (Simon's Town)	182	39.4	36.4	92.6	95.4	63.8	100.0
VICTORIA (Table Mountain)	128	99.3	100.0	98.5	100.8	100.0	100.4
WOODHEAD (Table Mountain)	954	57.8	65.3	69.3	95.1	99.8	82.0
Total Stored	4 377	3331.6	3431.9	3932.2	4243.8	3894.7	4129.0
Percentages stored		76.1	78.4	89.8	97.0	89.0	94.3

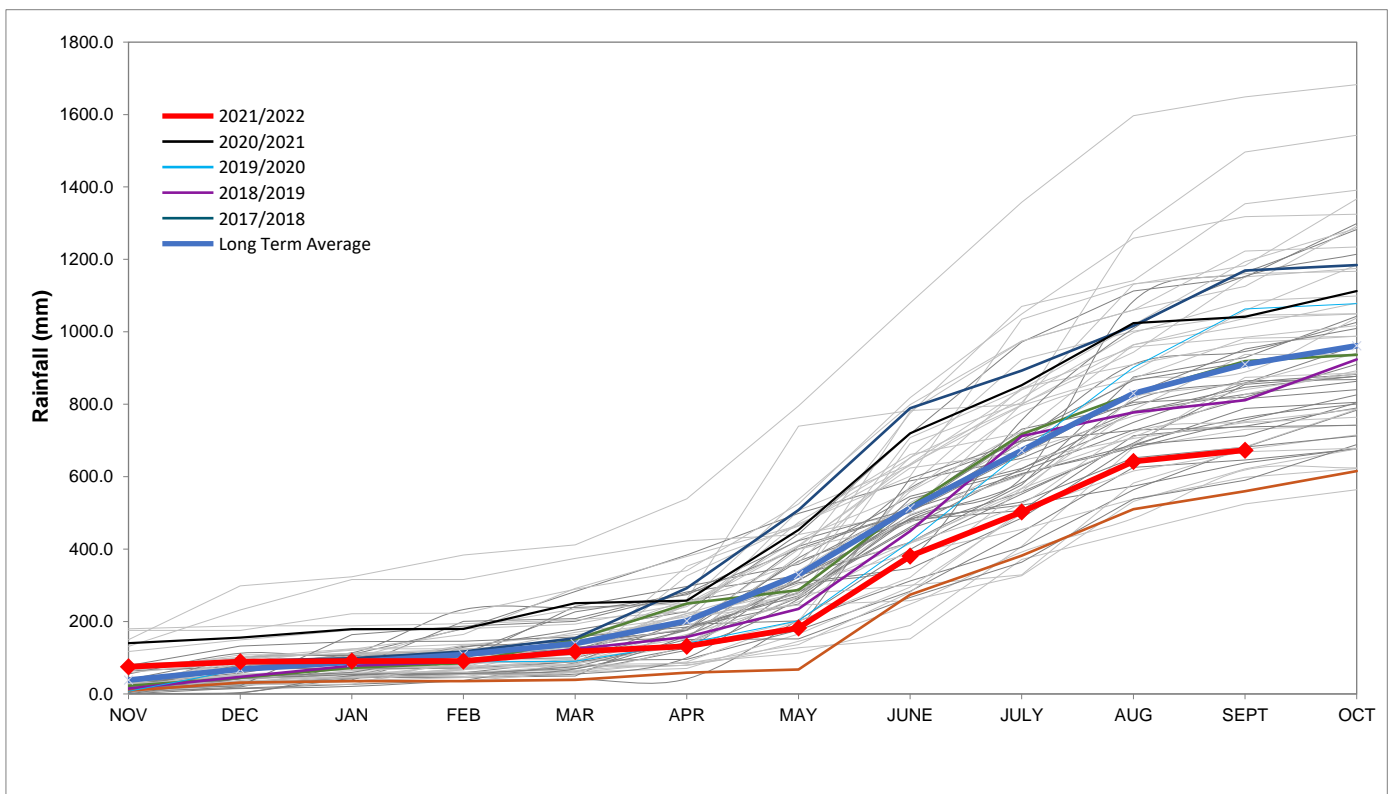
Rainfall Recorded

RAINFALL (mm)	03-Oct	04-Oct	05-Oct	06-Oct	07-Oct	08-Oct	09-Oct	Oct	
								Total*	LT Average
Blackheath Upper	0.0	0.0	0.0	0.0	0.0	0.0	0.0	0.0	26.8
Brooklands	0.0	0.0	0.0	3.0	0.0	0.0	0.0	3.0	47.7
Newlands	0.5	0.0	0.0	0.5	0.0	0.0	0.0	1.0	72.2
Steenbras	1.5	0.0	0.0	0.5	0.0	0.0	0.0	2.0	55.4
Table Mountain (Woodhead)	0.5	0.0	0.0	0.0	0.0	0.0	0.0	0.5	83.7
Theewaterskloof	0.0	0.0	0.0	0.9	0.0	0.0	0.0	0.9	44.1
Tygerberg	0.0	0.0	0.0	0.0	0.0	0.0	0.0	0.0	28.9
Voëlvllei	0.0	0.0	0.0	0.0	0.0	0.0	0.0	1.0	26.7
Wemmershoek	0.0	0.0	0.0	0.0	0.0	0.0	0.0	0.0	43.0
Wynberg	1.4	0.0	0.0	0.0	0.0	0.0	0.0	1.4	51.1

Notes: *Total/cummulative rainfall for month indicated above
LT: Long Term

Accumulated Monthly Rainfall at Wemmershoek

Note: Wemmershoek station used due to long record and mountainous location



Drinking Water Quality

SAMPLE PASS RATE

Month	Water Quality Compliance (%)	Target (%)
Jun-21	99.11	98
Jul-21	99.10	98
Aug-21	99.12	98
Sep-21	99.09	98
Oct-21	99.11	98
Nov-21	99.11	98
Dec-21	99.09	98
Jan-22	99.04	98
Feb-22	99.04	98
Mar-22	98.99	98
Apr-22	98.96	98
May-22	98.90	98
Jun-22	98.96	98
Jul-22	99.46	98.50
Aug-22	99.47	98.50

Notes:

This table shows CCT drinking water quality compliance according to the South African National Standard 241:2015. Compliance, measured against all prescribed chemical and microbiological components, consistently exceeds the very high CCT target of 98%. (Overall compliance percentages of continuous sampling and analysis are released on a monthly basis.