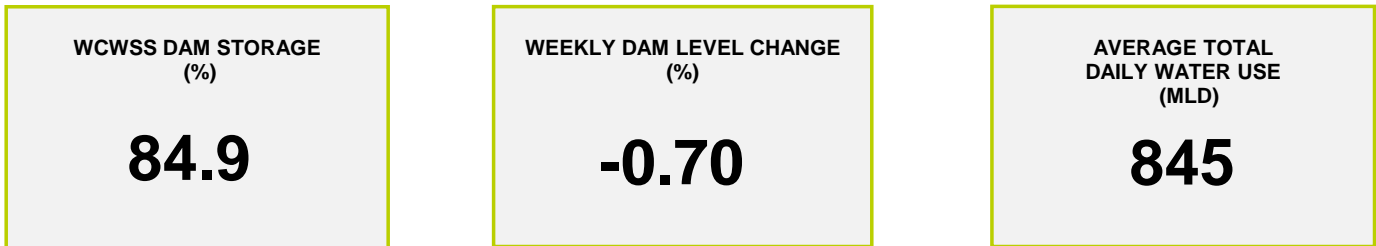




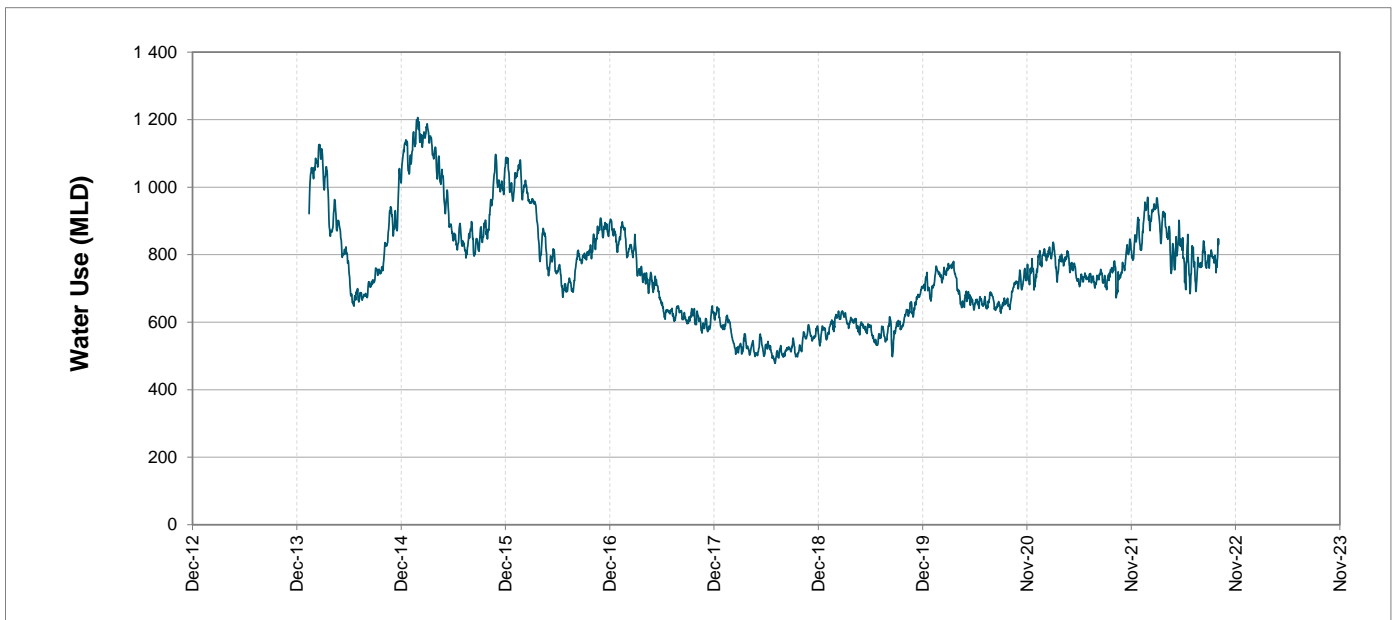
Headline Statistics



Water Production from Different Sources



Overall Water Usage Trend (2010 - Present)



WCWSS means Western Cape Water Supply System

MLD means million litres per day

More information on Water Saving and Restrictions is available on the City of Cape Town's 'ThinkWater' website

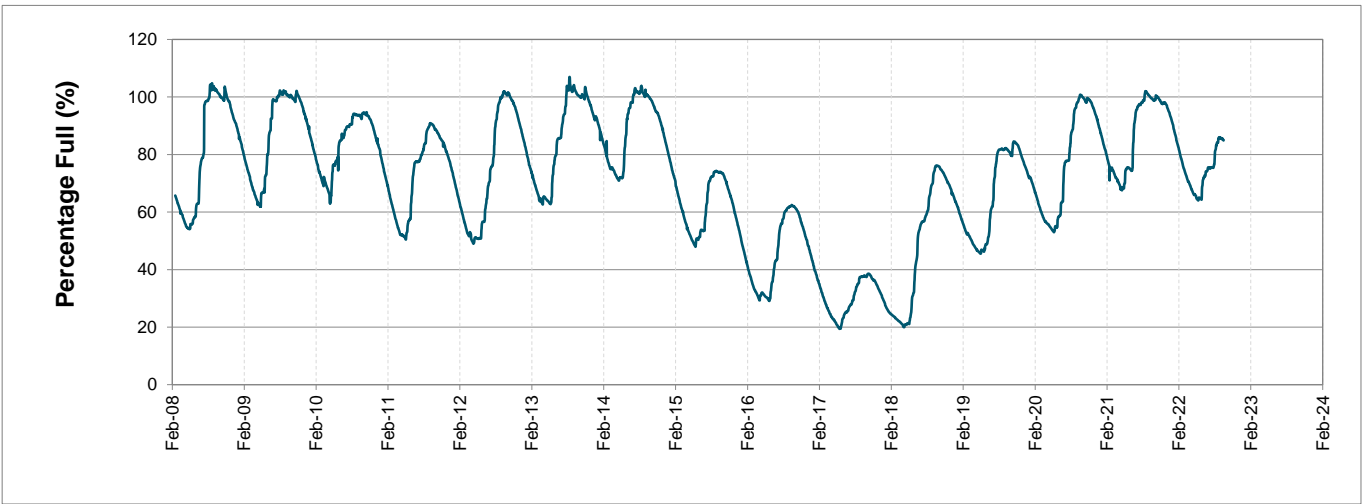
Water Stored in Major Dams (WCWSS)

Overall Percentage Full **84.9%**

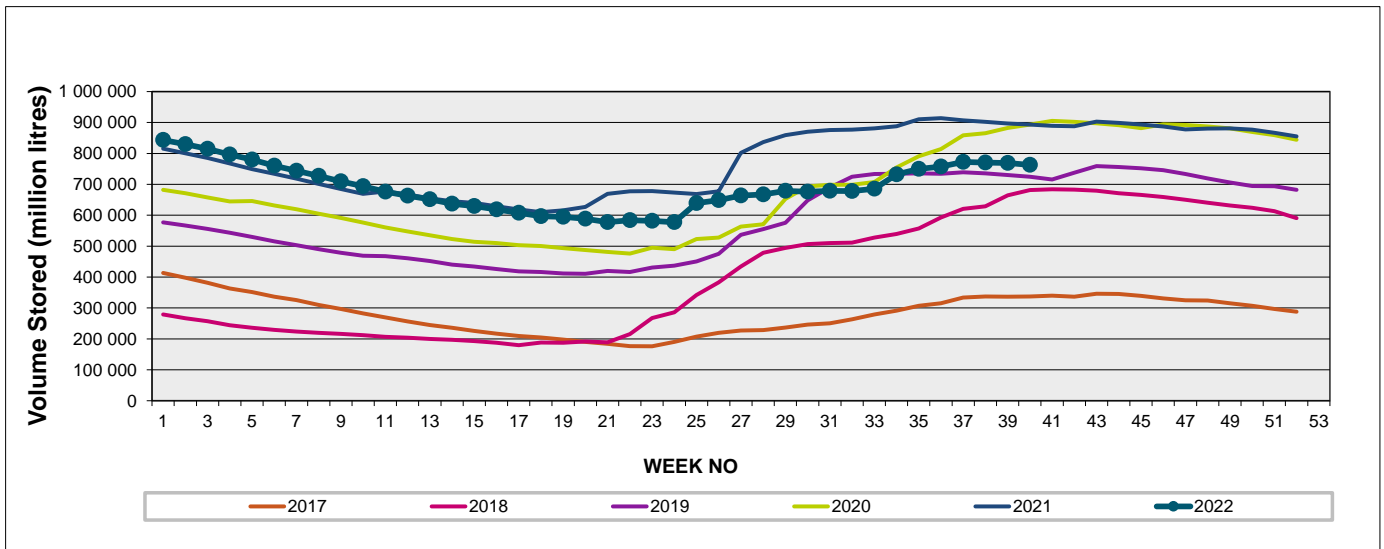
Weekly Change **-0.7%**

MAJOR DAMS (WCWSS)	STORAGE						
	CAPACITY	%	%	%	%	%	%
	MI	03 October 2022	Previous week	2021	2020	2019	2018
BERG RIVER	130 010	99.7	99.8	99.8	100.9	99.3	99.8
STEENBRAS LOWER	33 517	91.6	92.9	97.7	100.9	97.8	92.9
STEENBRAS UPPER	31 767	95.1	96.1	98.3	97.3	85.3	90.4
THEEWATERSKLOOF	480 188	83.8	84.8	99.9	101.3	71.8	58.4
VOËLVLEI	164 095	72.2	72.5	99.4	98.9	88.6	95.7
WEMMERSHOEK	58 644	88.0	87.3	97.9	99.0	92.1	95.6
TOTAL STORED	898 221	762 976	769 026	894 016	902 579	733 193	682 867
% STORAGE		84.9%	85.6%	99.5%	100.5%	81.6%	76.0%

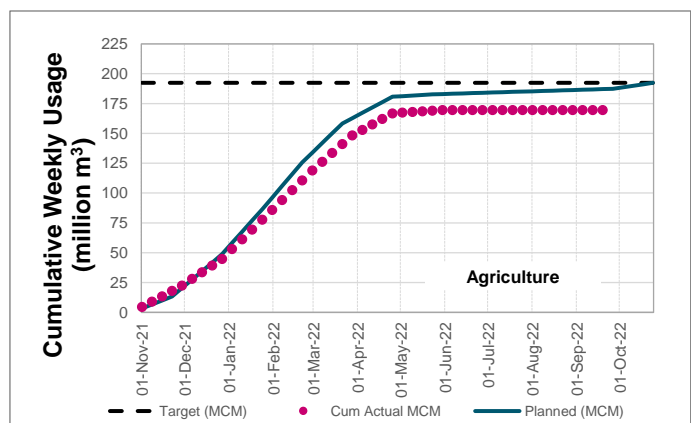
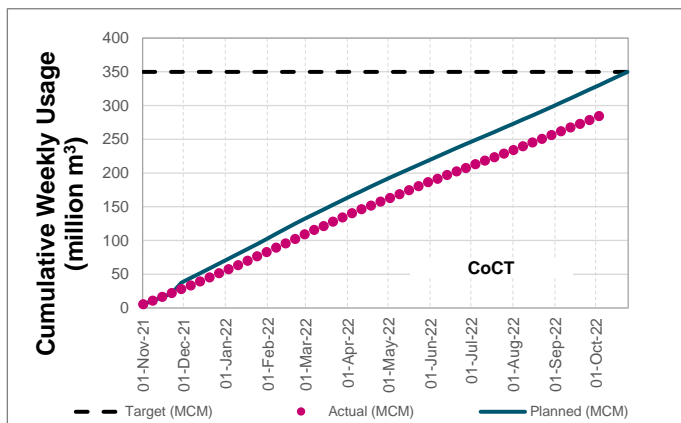
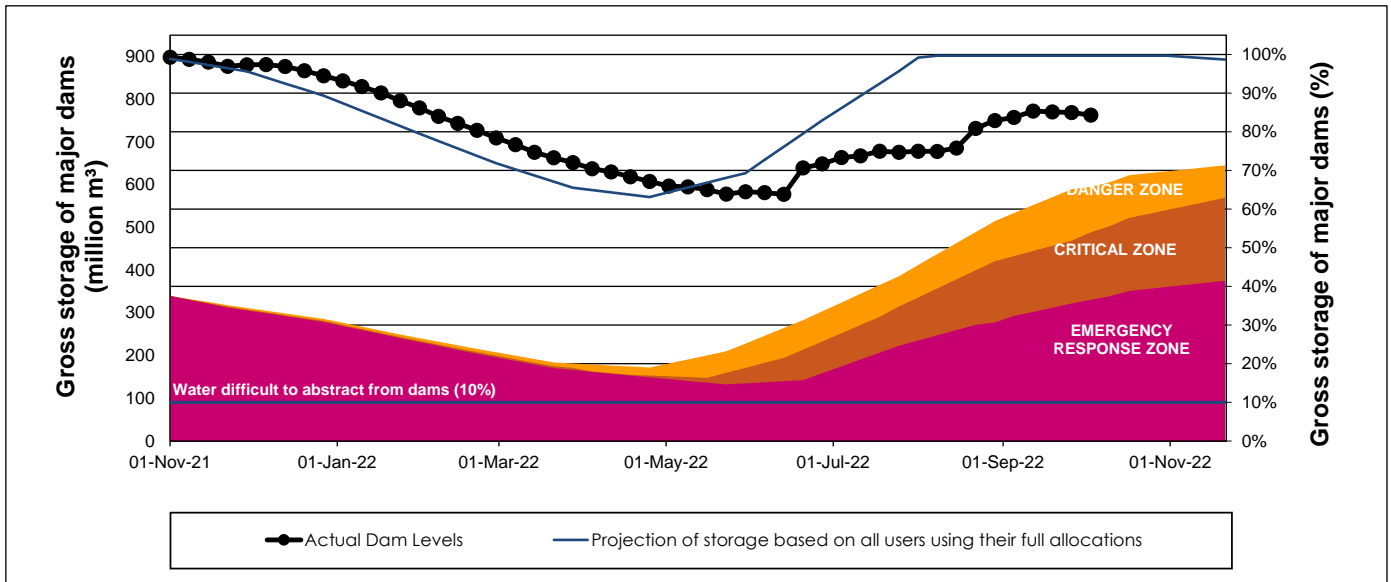
WCWSS Storage Record (2008 - Present)



WCWSS Comparative Storage Graph



WCWSS Dam Storage and Water Use Tracking



Water Stored in Minor Dams

Overall Percentage Full **78.4**

Weekly Change **-2.00**

MINOR DAMS	STORAGE						
	CAPACITY	%	%	%	%	%	%
	MI	03 October 2022	Previous week	2021	2020	2019	2018
ALEXANDRA (Table Mountain)	126	86.2	88.5	68.0	99.0	53.5	99.3
DE VILLIERS (Table Mountain)	243	80.7	82.9	93.5	100.0	100.0	100.3
HELY-HUTCHINSON (Table Mount)	925	100.0	99.8	99.5	100.5	99.8	100.0
KLEINPLAATS (Simon's Town)	1 368	74.6	76.4	99.3	100.2	83.2	99.1
LAND-EN-ZEEZICHT (Helderberg)	451	87.2	87.8	100.0	94.9	83.5	100.0
LEWIS GAY (Simon's Town)	182	36.4	32.3	100.5	100.9	68.5	100.9
VICTORIA (Table Mountain)	128	100.0	99.6	100.0	99.6	100.0	101.5
WOODHEAD (Table Mountain)	954	65.3	71.7	77.3	97.3	98.4	92.0
Total Stored	4 377	3431.9	3519.4	4038.9	4283.5	3896.8	4241.6
Percentages stored		78.4	80.4	92.3	97.9	89.0	96.9

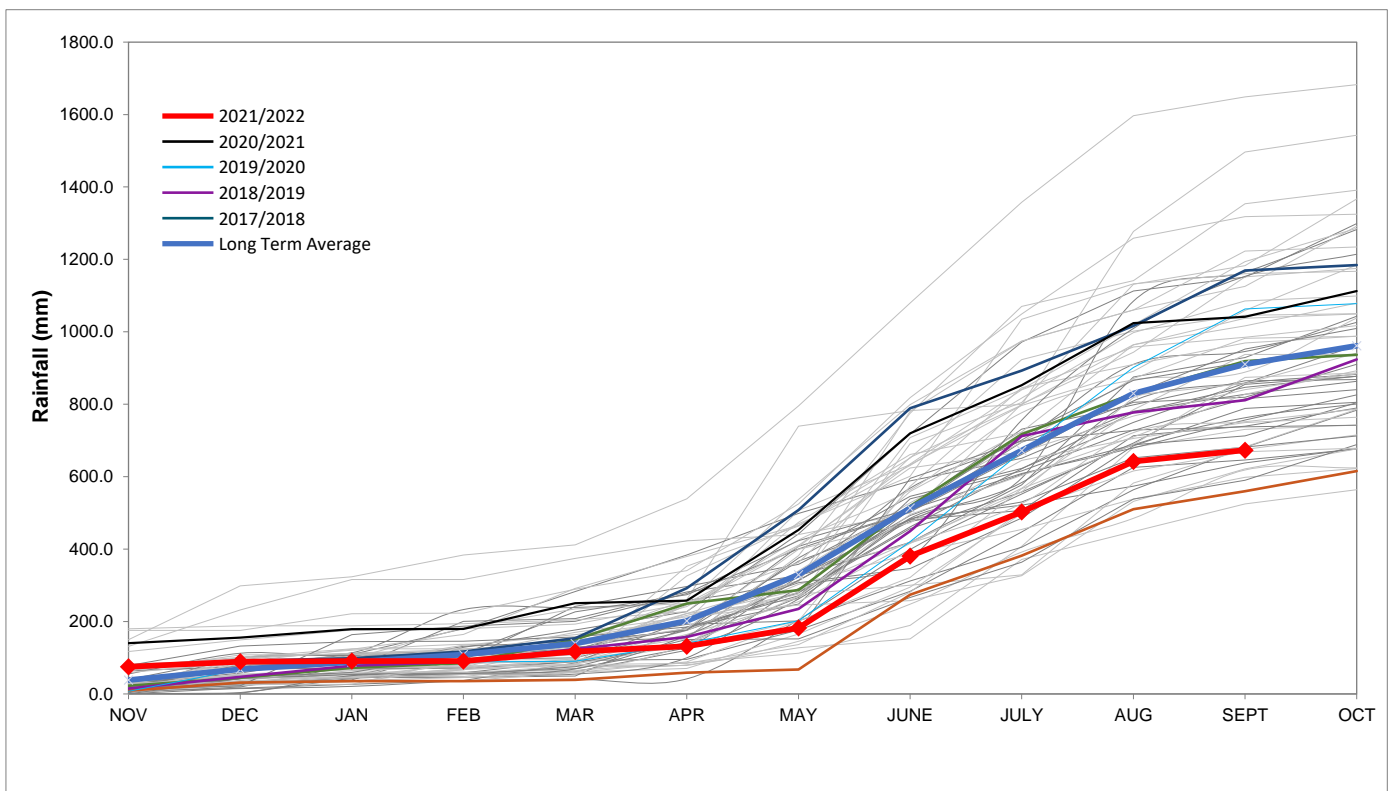
Rainfall Recorded

RAINFALL (mm)	26-Sep	27-Sep	28-Sep	29-Sep	30-Sep	01-Oct	02-Oct	Oct	
								Total*	LT Average
Blackheath Upper	0.0	0.0	0.0	0.0	0.0	0.0	0.0	0.0	26.8
Brooklands	3.0	0.0	0.0	0.0	0.0	0.0	0.0	0.0	47.7
Newlands	2.5	0.0	0.0	0.0	0.0	0.0	0.0	0.0	72.2
Steenbras	0.0	0.0	0.0	0.0	0.0	0.0	0.0	0.0	55.4
Table Mountain (Woodhead)	11.0	0.0	0.0	0.0	0.0	0.0	0.0	0.0	83.7
Theewaterskloof	0.0	0.0	0.0	0.0	0.0	0.0	0.0	0.0	44.1
Tygerberg	0.0	0.0	0.0	0.0	0.0	0.0	0.0	0.0	28.9
Voëlvllei	0.0	0.0	0.0	0.0	0.0	0.0	0.0	0.0	26.7
Wemmershoek	0.0	0.0	0.0	0.0	0.0	0.0	0.0	0.0	43.0
Wynberg	0.0	0.0	0.0	0.0	0.0	0.0	0.0	0.0	51.1

Notes: *Total/cummulative rainfall for month indicated above
LT: Long Term

Accumulated Monthly Rainfall at Wemmershoek

Note: Wemmershoek station used due to long record and mountainous location



Drinking Water Quality

SAMPLE PASS RATE

Month	Water Quality Compliance (%)	Target (%)
Jun-21	99.11	98
Jul-21	99.10	98
Aug-21	99.12	98
Sep-21	99.09	98
Oct-21	99.11	98
Nov-21	99.11	98
Dec-21	99.09	98
Jan-22	99.04	98
Feb-22	99.04	98
Mar-22	98.99	98
Apr-22	98.96	98
May-22	98.90	98
Jun-22	98.96	98
Jul-22	99.46	98.50
Aug-22	99.47	98.50

Notes:

This table shows CCT drinking water quality compliance according to the South African National Standard 241:2015. Compliance, measured against all prescribed chemical and microbiological components, consistently exceeds the very high CCT target of 98%. (Overall compliance percentages of continuous sampling and analysis are released on a monthly basis.